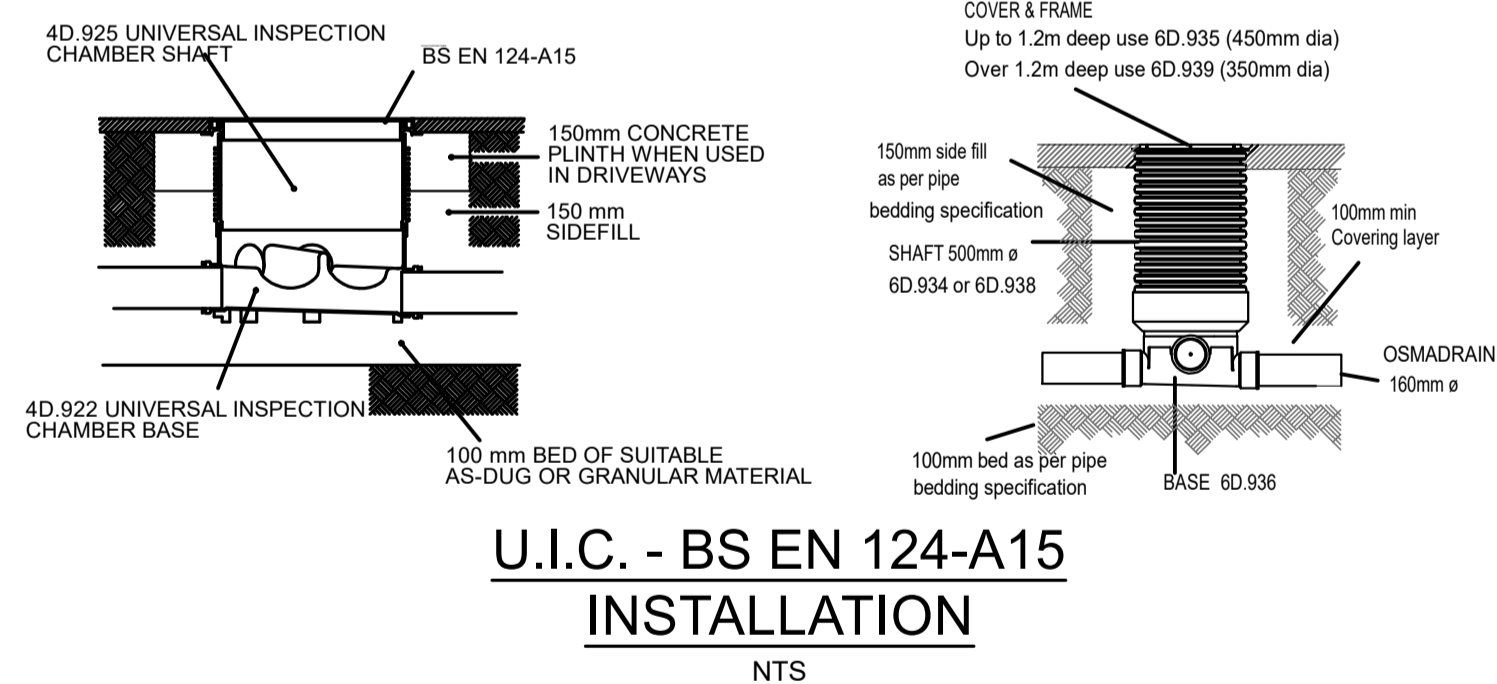
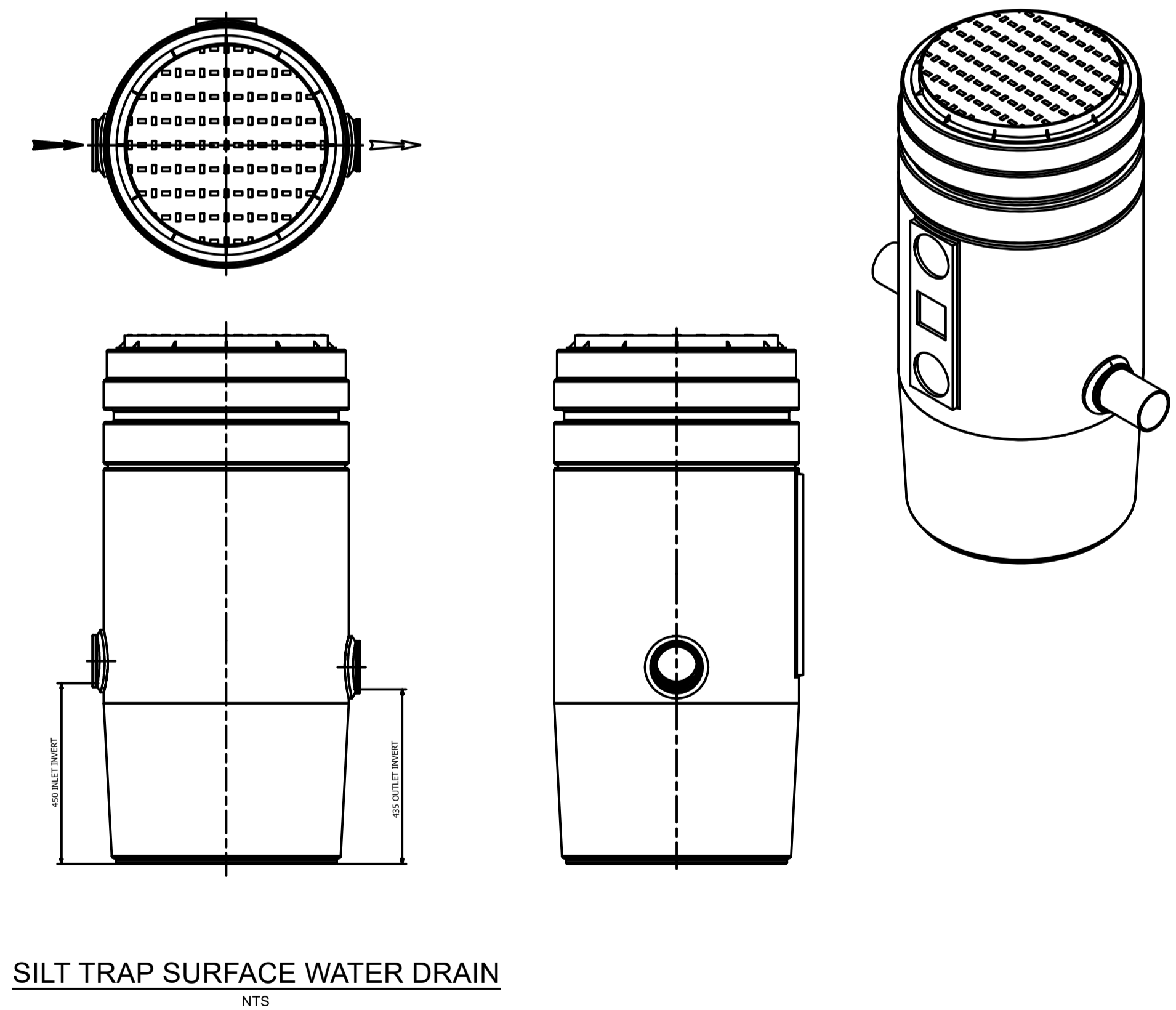


NOTES:  
UNITS SUPPLIED WITH 450 PEDESTRIAN RATED INSPECTION COVER AND FRAME.  
INLET - FLEX SEAL c/w 110 SOCKET TO SUIT 110 EN1401 PIPE  
OUTLET - FLEX SEAL c/w 110 SOCKET TO SUIT 110 EN1401 PIPE  
350 LITRE NOMINAL CAPACITY



**PRELIMINARY PROPOSAL**  
NOT FOR CONSTRUCTION

NOTES:  
1. For setting out refer to Architect's drawings.  
2. This drawing to be read in conjunction with all other Architectural and Engineering drawings and all other relevant drawings and Specifications.  
3. DO NOT SCALE THIS DRAWING. Use figured dimensions only.  
4. No part of this document may be reproduced or transmitted in any form or stored in any retrieval system of any nature without the written permission of GKCE LTD as copyright holder except as agreed for use on the project for which the document was originally issued.

PROGRESS  
 PLANNING  
 TENDER  
 CONSTRUCTION

Issued To	Date	No. Of Copies
Architect		
Quantity Surveyor		
Main Contractor		
M. & E. Engineers		
Client		
Clerk of Works		

Rev	By	Date	Description
P1	DMV	07.12.2023	PROGRESS

Scales AS SHOWN A1 Date DECEMBER 2023 Drawn DMV Checked

JOB TITLE  
FAILTE IRELAND  
KILLINEY BEACH FACILITY

DRG. TITLE  
GENERIC DETAILS  
SHEET 1

GK Consulting Engineers LTD  
Unit 11 Millbank Business Centre K78R261  
ph 01 8749 322  
email info@gkce.ie  
www.gkce.ie

DRAWING NUMBER GK22104-C102 REV. P1