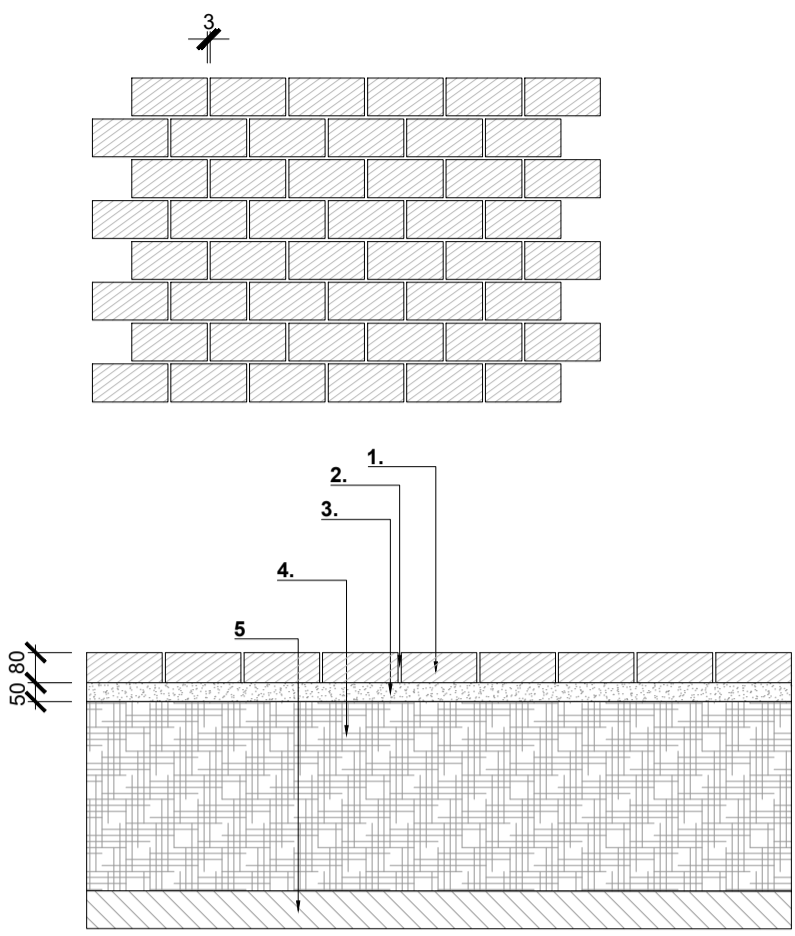


- LEGEND:**
- PAVING
Permeable PC concrete paving,
80mm thick
Colour TBC
Demarcation: reflective PC paving
used to demarcate car parking bays
 - JOINTING
Fine washed grit to BS EN 13242
brushed into joint (6 mm joint)
 - BEDDING
50mm bedding course of fine
washed 6.3-2mm grit to BS7533-13
and BS EN 13242
 - GEOTEXTILE
 - SUB-BASE
To engineer's details
 - DRAINAGE PIPE
To engineer's details
 - SUB-GRADE
To engineer's details

PERMEABLE PAVING FOR PARKING AREAS

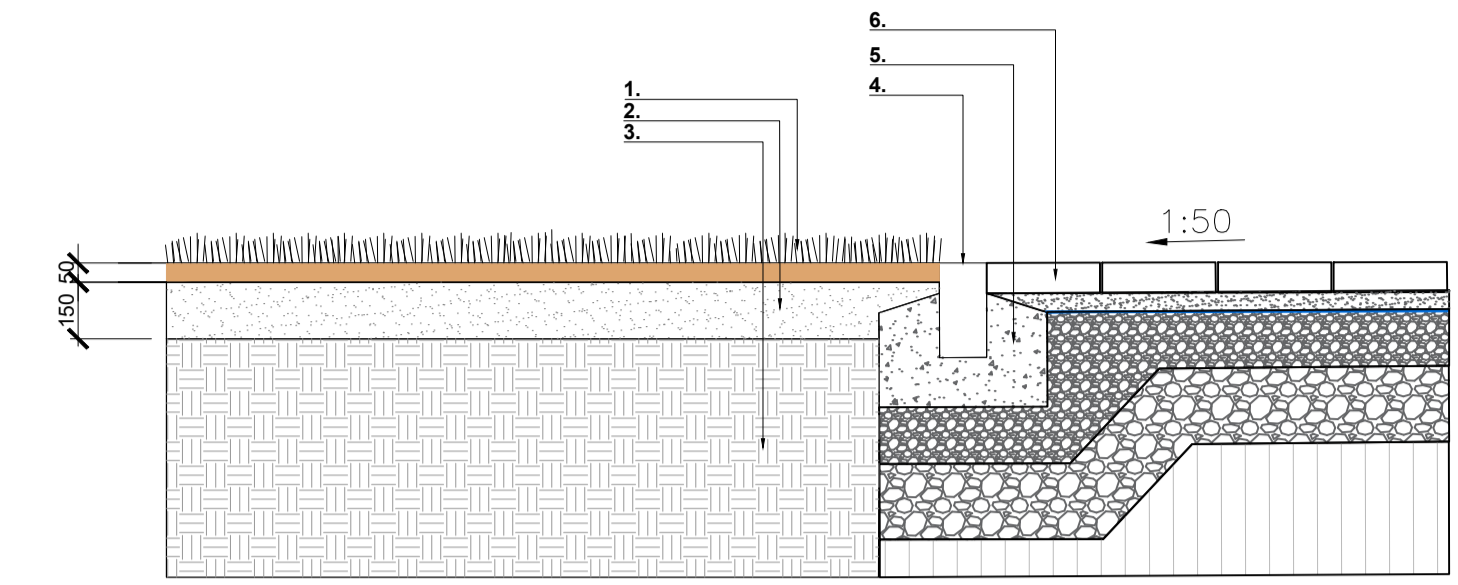
01
300



- LEGEND:**
- PAVING
PC concrete paving with granite
surface finish, 80mm thick, colour
TBC
 - JOINTING
mortar jointing, 3mm joints
 - BEDDING
50mm bedding course of
strengthened mortar
 - SUB-BASE
To engineer's details
 - SUB-GRADE
To engineer's details

FEATURE PAVING FOR PUBLIC FOOTPATHS

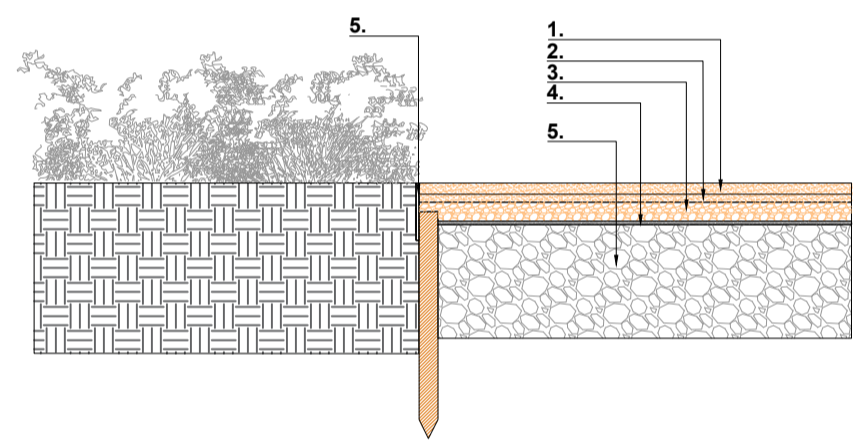
02
300



- LEGEND:**
- GRASS SEEDING
Seed mixture for general lawn
 - TOPSOIL
150mm deep sandy loam topsoil
with 50mm dressing of silica sand
Growing medium mixed and raked
evenly into the topsoil
 - FREE DRAINING SUBSOIL
 - PC CONCRETE KERB
Laid flush
125 x 250 x 915 mm
Finnish: exposed aggregate
Colour: Granite aggregate
 - CONCRETE HAUNCHING
To engineers detail
 - PROPOSED PAVING

INTERFACE BETWEEN GRASS AND PAVING

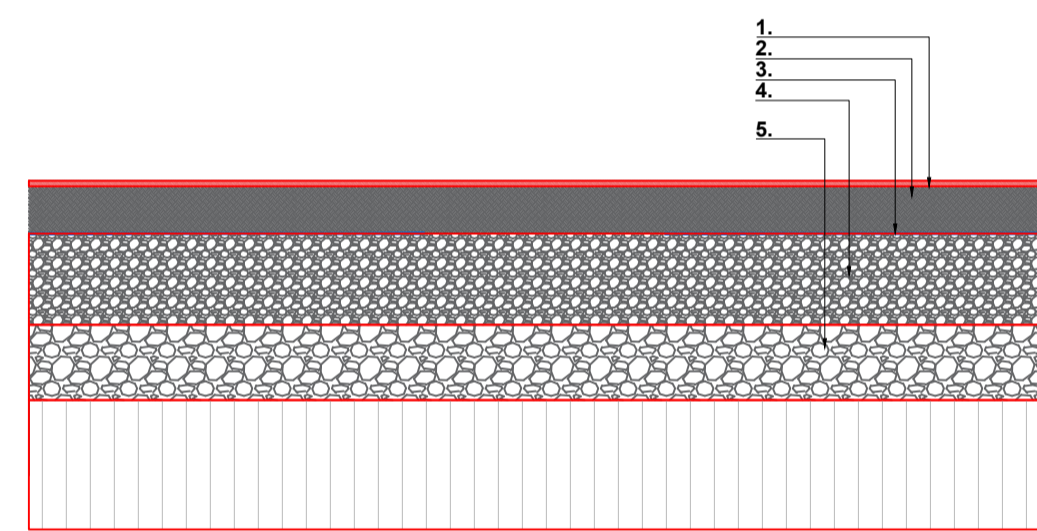
03
300



- LEGEND:**
- 50mm Compacted gravel Ballylusk
65% DUST -35% 0-6mm) laid to fall
compacted in 2 layers of 25mm when damp
 - 50mm Compacted gravel Ballylusk
DUST - 6mm
 - Blinding layer of quarry dust
 - SUB-BASE
well compacted cl804
depth to eng spec
 - PROPOSED METAL RETAINING EDGE
profile height: 150 mm
laid: flush
rigid format to form straight lines, non-rigid format to
form curves
material: steel galvanised to BS EN ISO 1461
dimensions: 150mm x 8mm x 3m
accessories: 5No. fixing stakes 50mm square and
600mm long at 500mm centres and 2No. connector
strips per 3m length

COMPACTED GRAVEL AND METAL EDGE

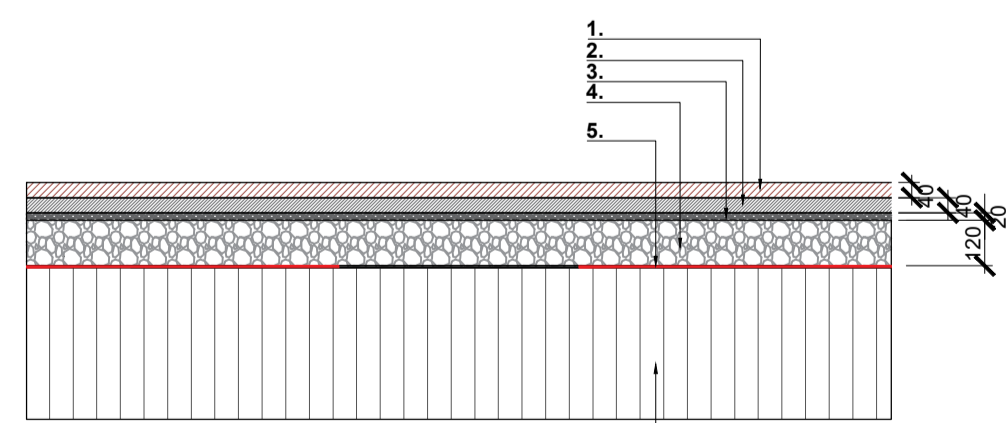
04
300



- LEGEND:**
- Wetpour EPDM safety surface
TOP LAYER
Coloured of fine EPDM rubber granules
min. 15mm depth.
colour TBC
To be installed by the playground
specialist.
To comply with EN 1177 and BS 7188
 - BASE LAYER
SBR layer granulated recycled rubber
used in the bottom layer of surfacing for
shock absorbency. Comprised of graded,
midium-coarse rubber granules, bonded
with polyurethane binders.
Depth to correspond to critical fall height
of play equipment.
Refer to surface plan for extent of
increased depth of impact absorption
Surface and play equipment
manufacturer's instructions
 - GEOTEXTILE
To engineers detail
 - SUB-BASE
To Engineers's detail
 - SUB-GRADE
To engineers' s detail

Wet-pour safety surfacing

05
300

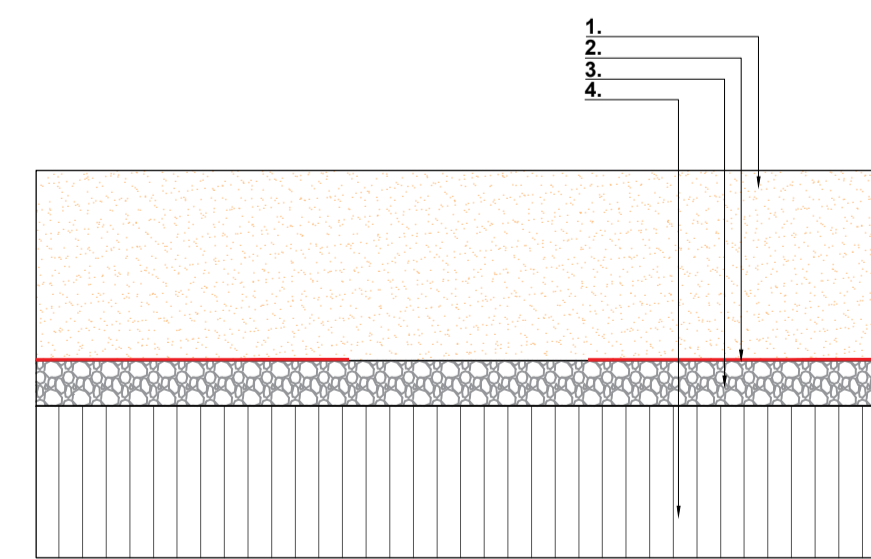


- LEGEND:**
- TOP LAYER
Coloured rubber mulch safety surface
(min.40mm or per manufacturer
recommendation)
colour TBC
To be installed by the playground
specialist.
To comply with EN 1177 and BS 7188
 - BASE LAYER
40mm granulated recycled rubber used
in the bottom layer of surfacing for shock
absorbency. Comprised of graded,
midium-coarse rubber granules, bonded
with polyurethane binders Depth to
correspond to critical fall height of play
equipment.
Refer to surface plan for extent of
increased depth of impact absorption

Recycled Rubber Mulch Play Surface

06
300

- Surface and play equipment
manufacturer's instructions
To be installed by the playground
specialist.
To comply with EN 1177 and BS 7188
- LAYING COURSE
20 mm depth of crushed 0-4mm stones
 - SUBBASE
120mm depth of crushed 0-32mm stones
to engineers's detail
 - GEOTEXTILE
To engineers detail
 - COMPACTED SOIL



Play sand safety surfacing

07
300

- LEGEND:**
- TOP LAYER
Play sand for safety surfacing
Play surface and build up to
manufacturer/supplier detail and
specification
Depth to correspond to critical fall height
of play equipment.
Refer to surface plan for extent of
increased depth of impact absorption
Surface and play equipment
manufacturer's instructions
To be installed by the playground
specialist.
To comply with EN 1177 and BS 7188
 - GEOTEXTILE
To engineers detail
 - SUB-BASE
Well compacted cl804, 200mm depth
To engineers's detail
 - COMPACTED SOIL

REV	DESCRIPTION	DATE
01	PLANNING DRAFT REV	01.03.2024
00	PLANNING DRAFT	01.03.2024

Mitchell + Associates

PROJECT TITLE:
Social Housing Bundle 4&5
CLIENT:
NDA
DRAWING NAME:
Typical hardworks details
DRAWING NUMBER:
SHB5-BDR-DR-MAL-L-P1-0300
JOB NUMBER:
LSOC003
STATUS:
Planning

DRAWN: VK
CHECKED:
SCALE: 1:20 @ A1

NOTES:
All dimensions are in millimeters unless otherwise stated and shall be checked and
confirmed by the contractor on site. Any discrepancies shall be immediately reported
to the landscape architects. Work to figured dimensions only. Do not scale from
drawing. Do Not Scale. Use Figured Dimensions Only. Not for Construction Purposes
unless Specifically Marked. © This Drawing is Copyright of Mitchell + Associates.

www.mitchell.ie info@mitchell.ie +353 1 454 5066