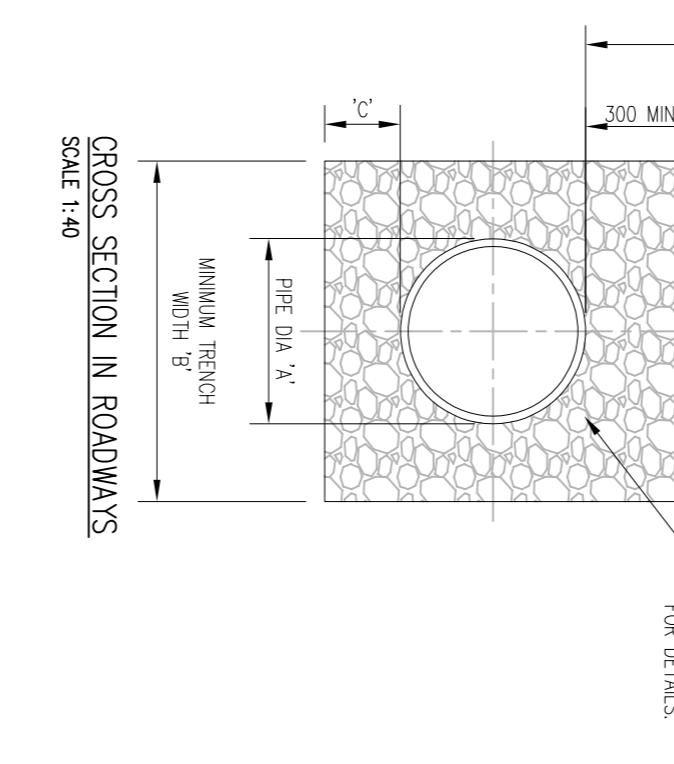
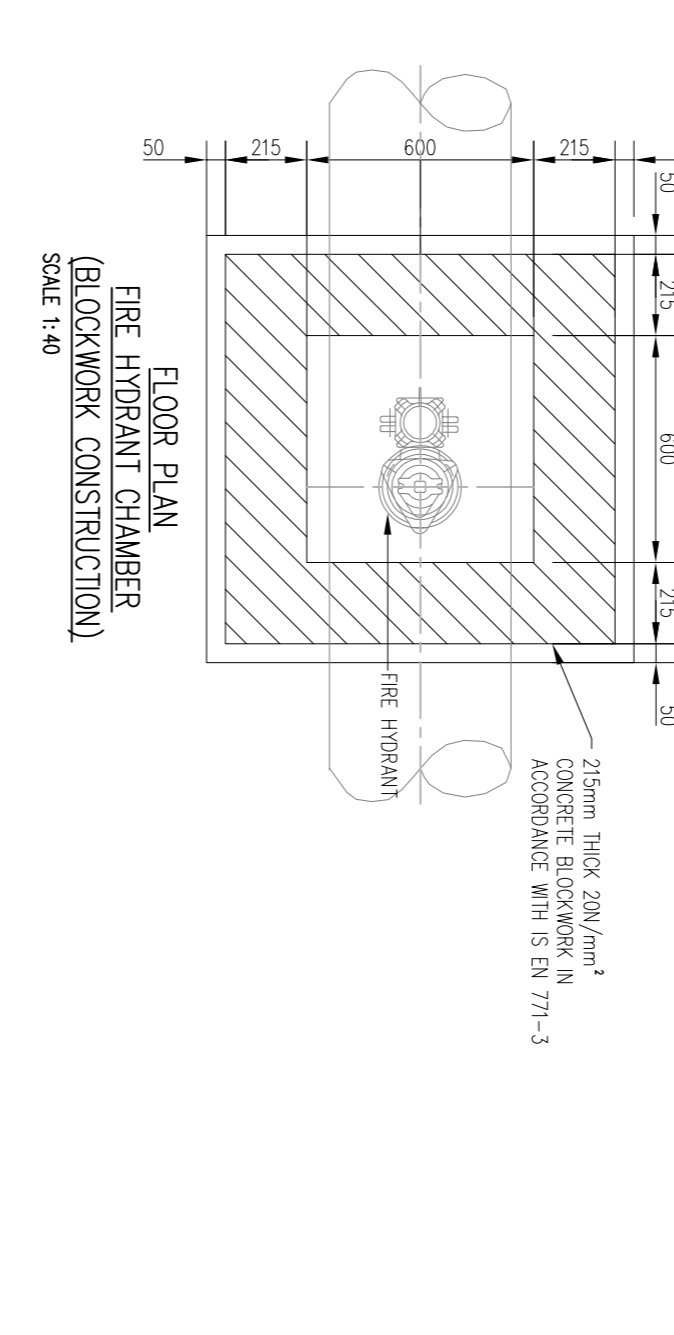
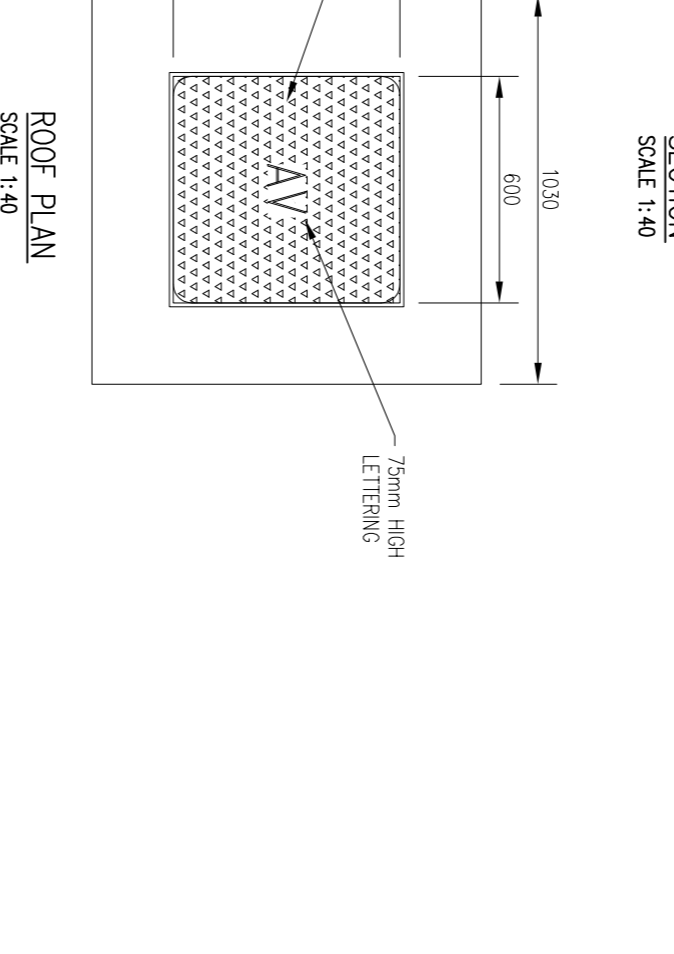
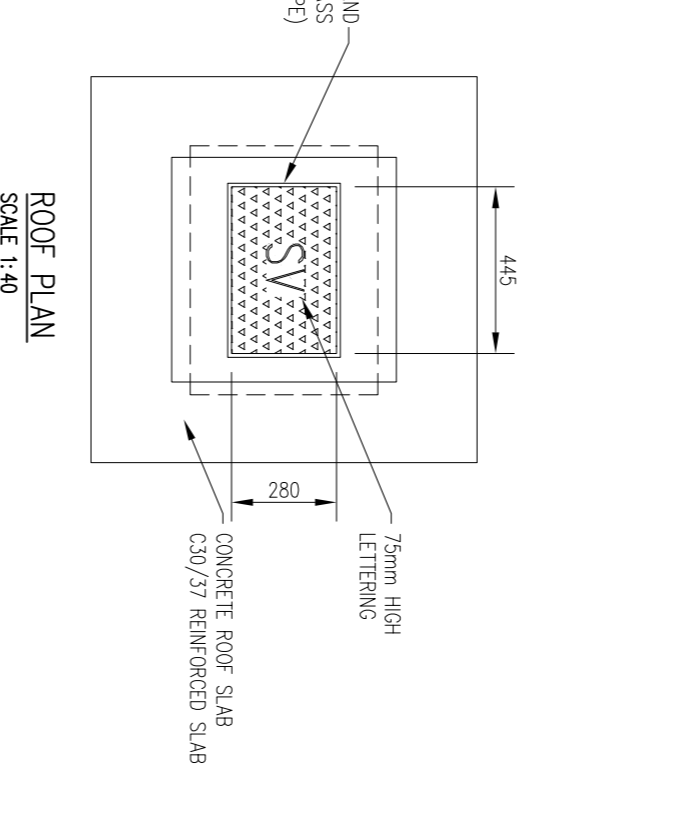
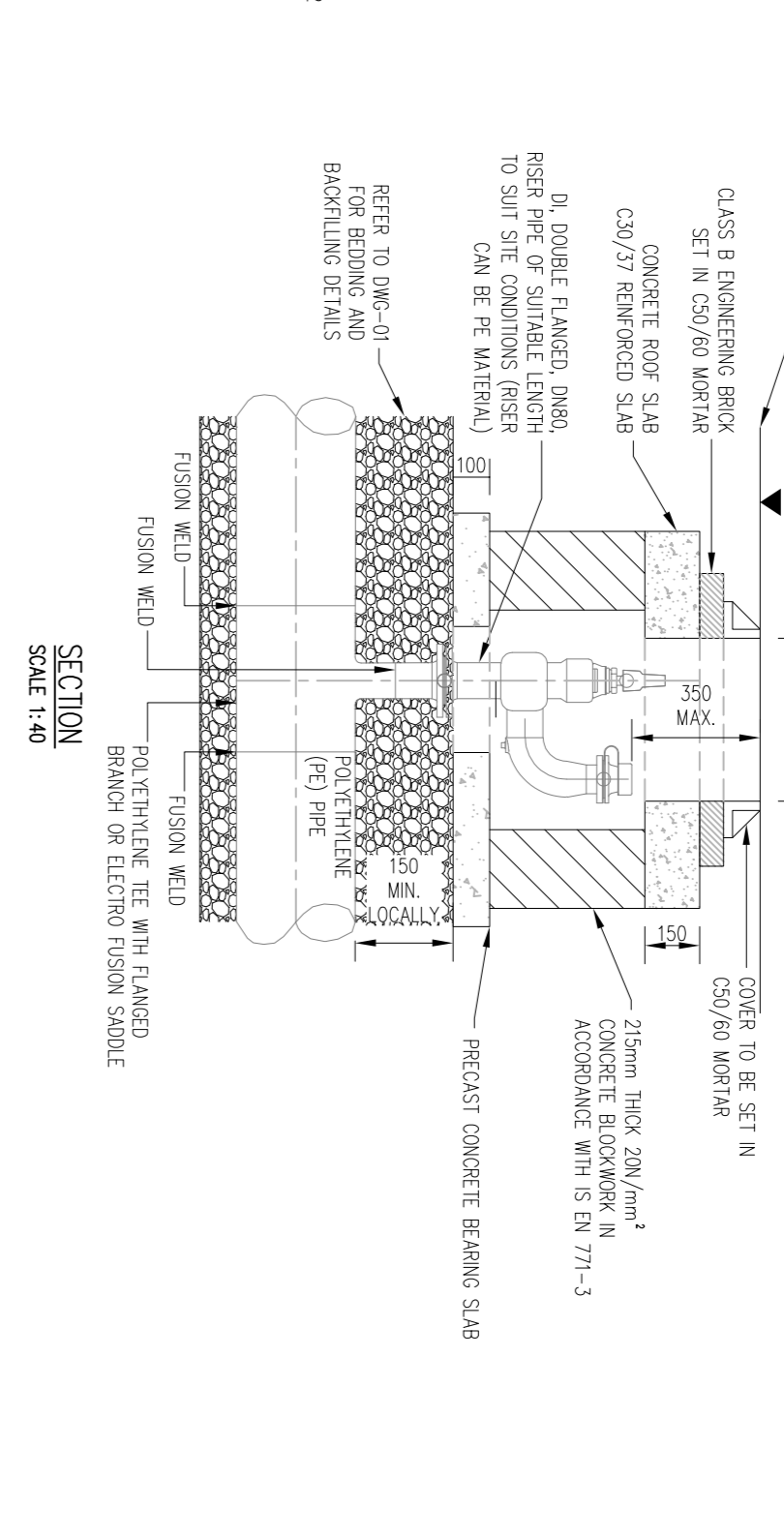
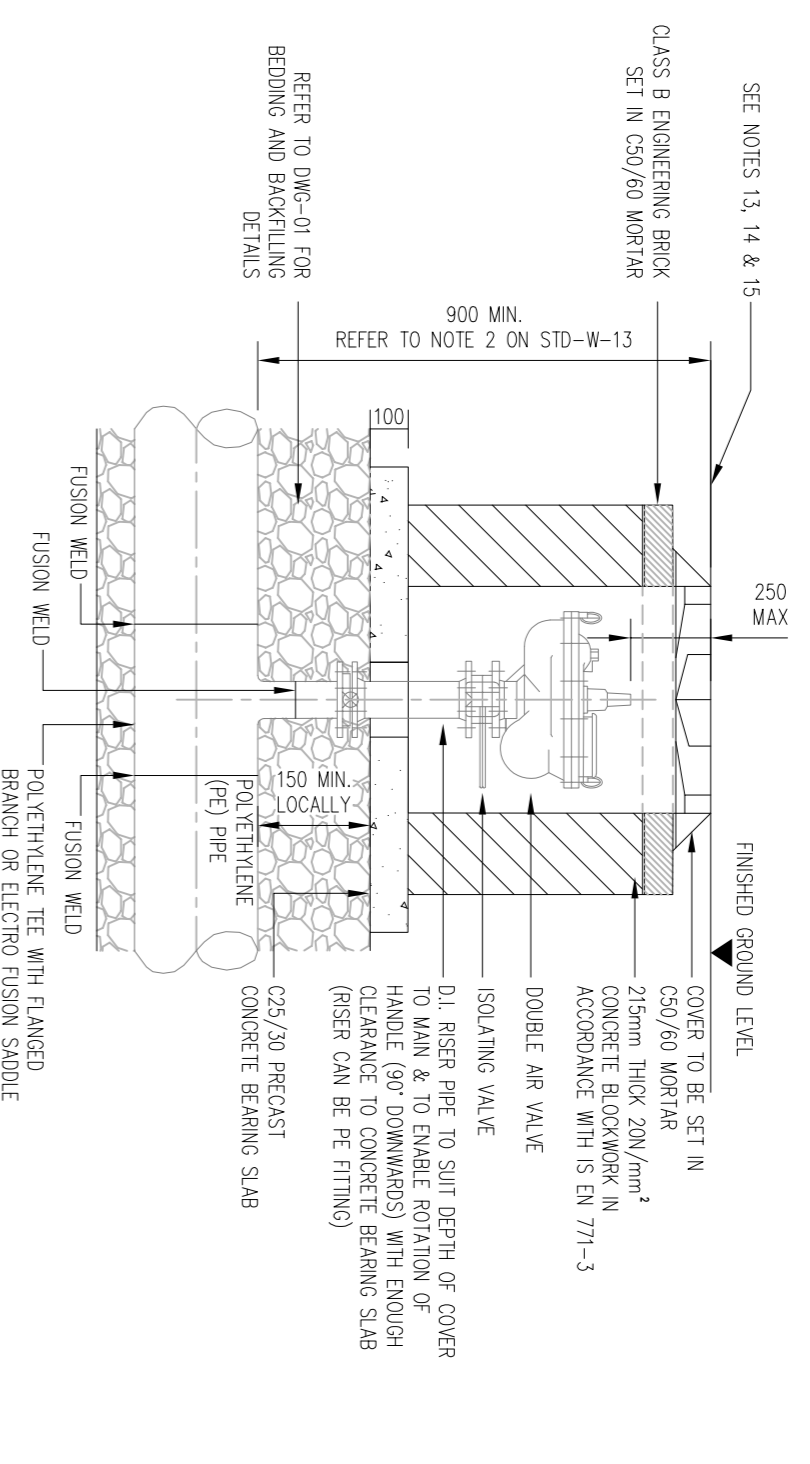
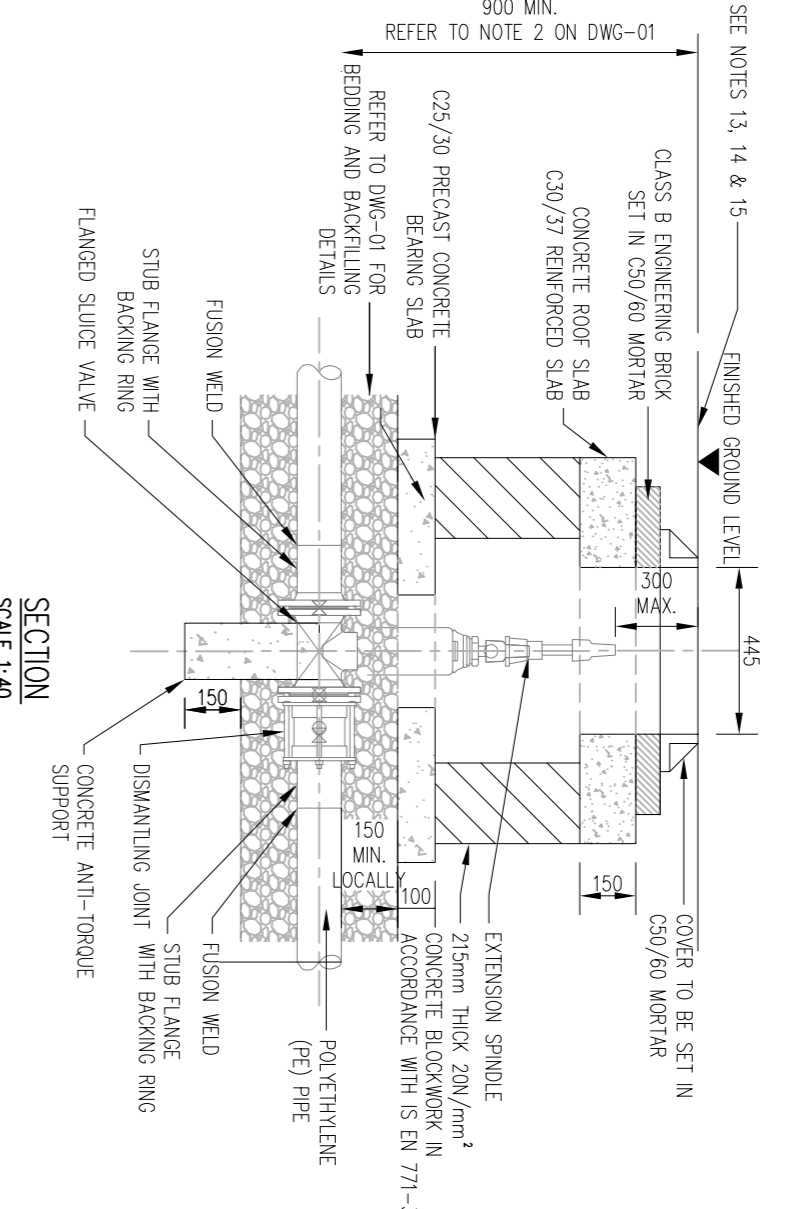
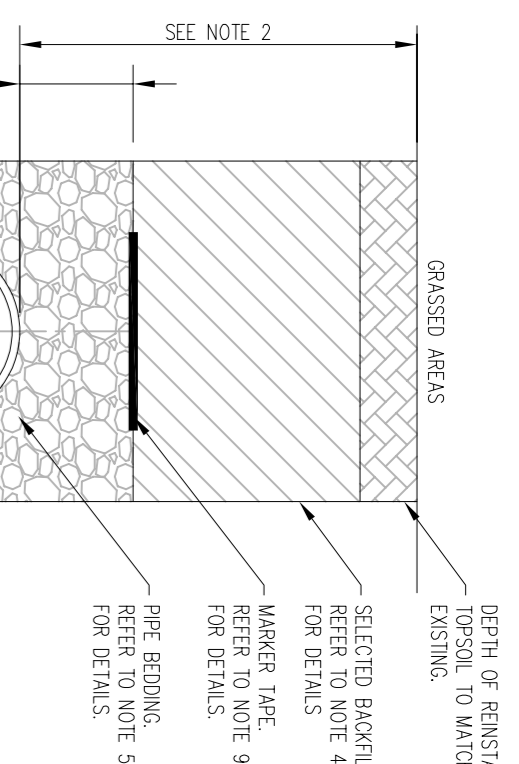
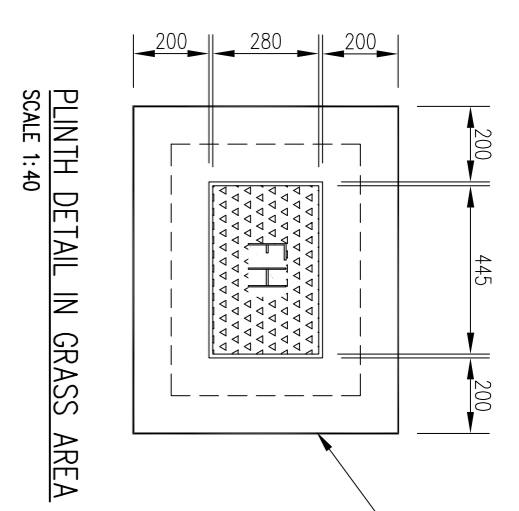
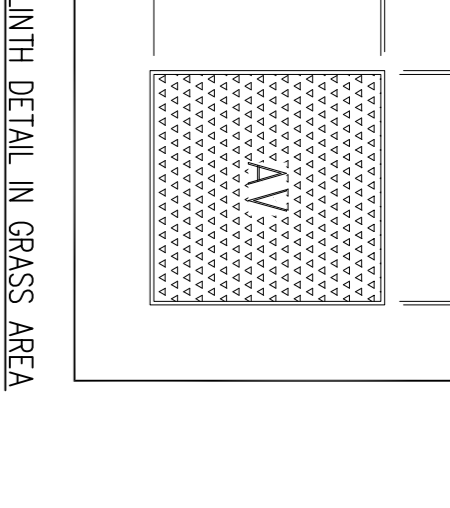
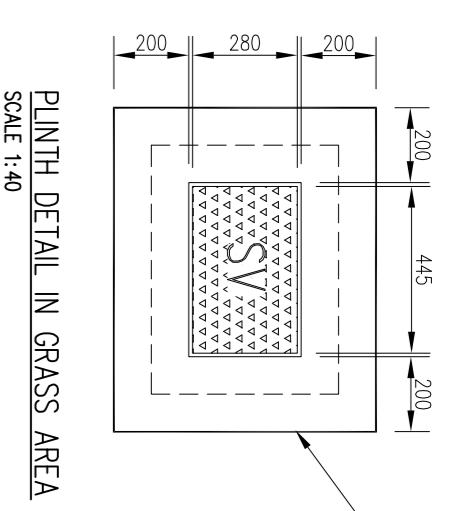


# NOTES

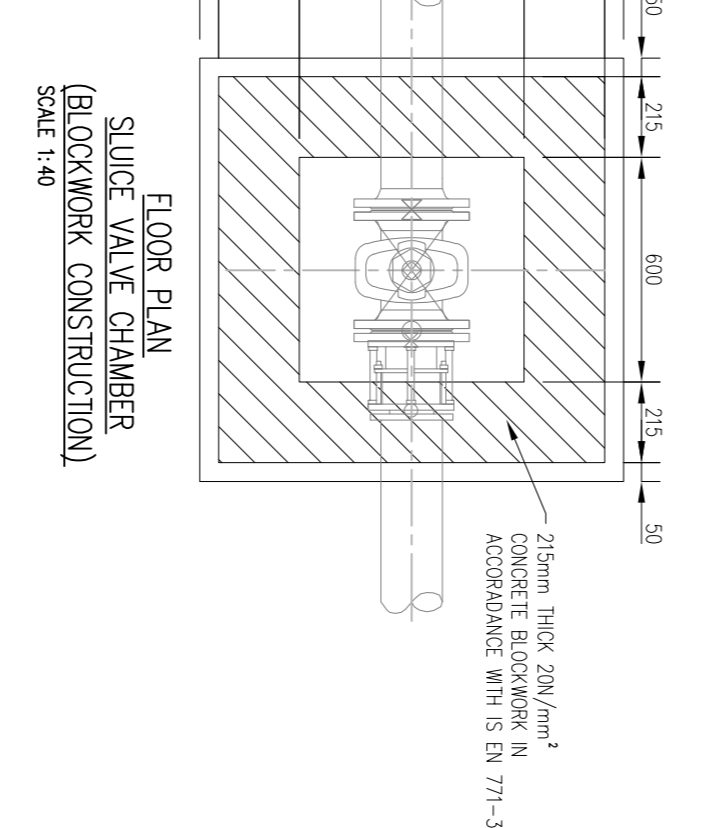
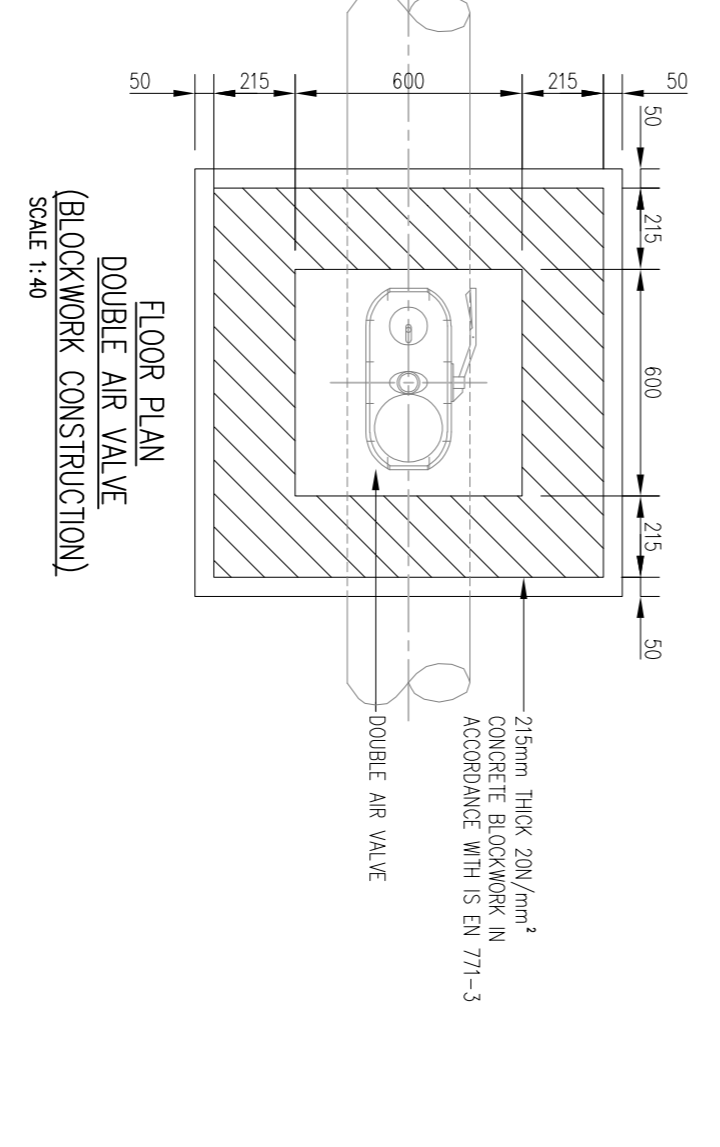
- GENERAL**
- 1) THESE DRAWINGS TO BE READ IN CONJUNCTION WITH ALL RELEVANT HAYES HIGGINS ENGINEERING DRAWINGS AND SPECIFICATIONS.
  - 2) DO NOT SCALE. USE FIGURED DIMENSIONS ONLY.

PIPE DIAMETER A' (mm)	DEPTH OF BEDDING C' (mm)	TRENCH WIDTH B' (mm)
≤ 200	150	200
250	200	
PIPE DIAMETER A (mm)		TRENCH WIDTH B (mm)
≤ 80	SEE NOTE 10	
100	500	
150	600	
200	600	
250	750	
300	750	
350	750	
400	900	
450	900	

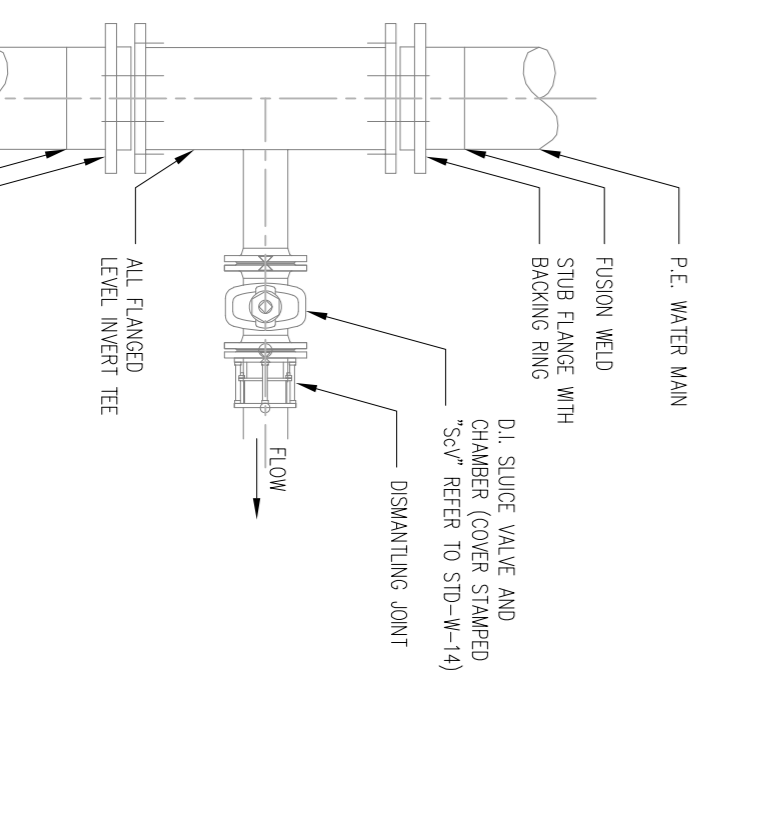


## DETAIL 02 - ON-LINE HYDRANT FOR POLYETHYLENE (P.E.) PIPE

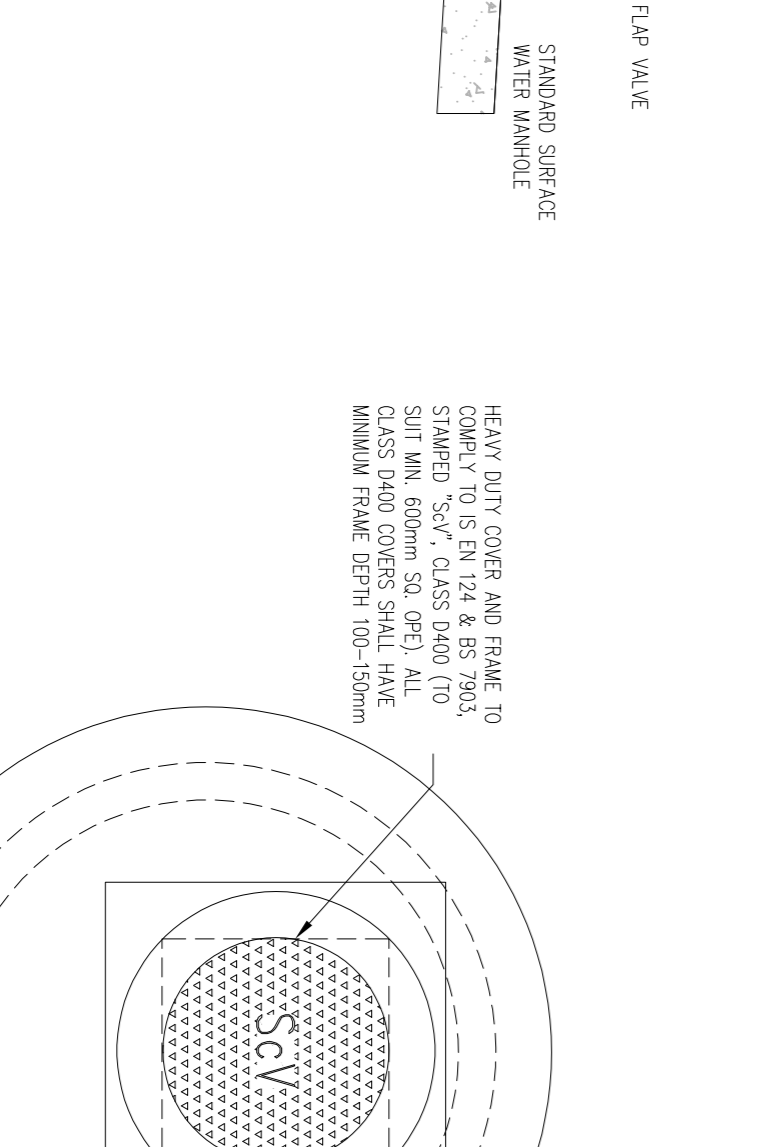
DIAMETER OF MAIN	UP TO 250 (mm)	250 TO 350 (mm)
DIAMETER OF BRANCH	80mm	80mm
BORE OF VALVE INLET	80mm	100mm



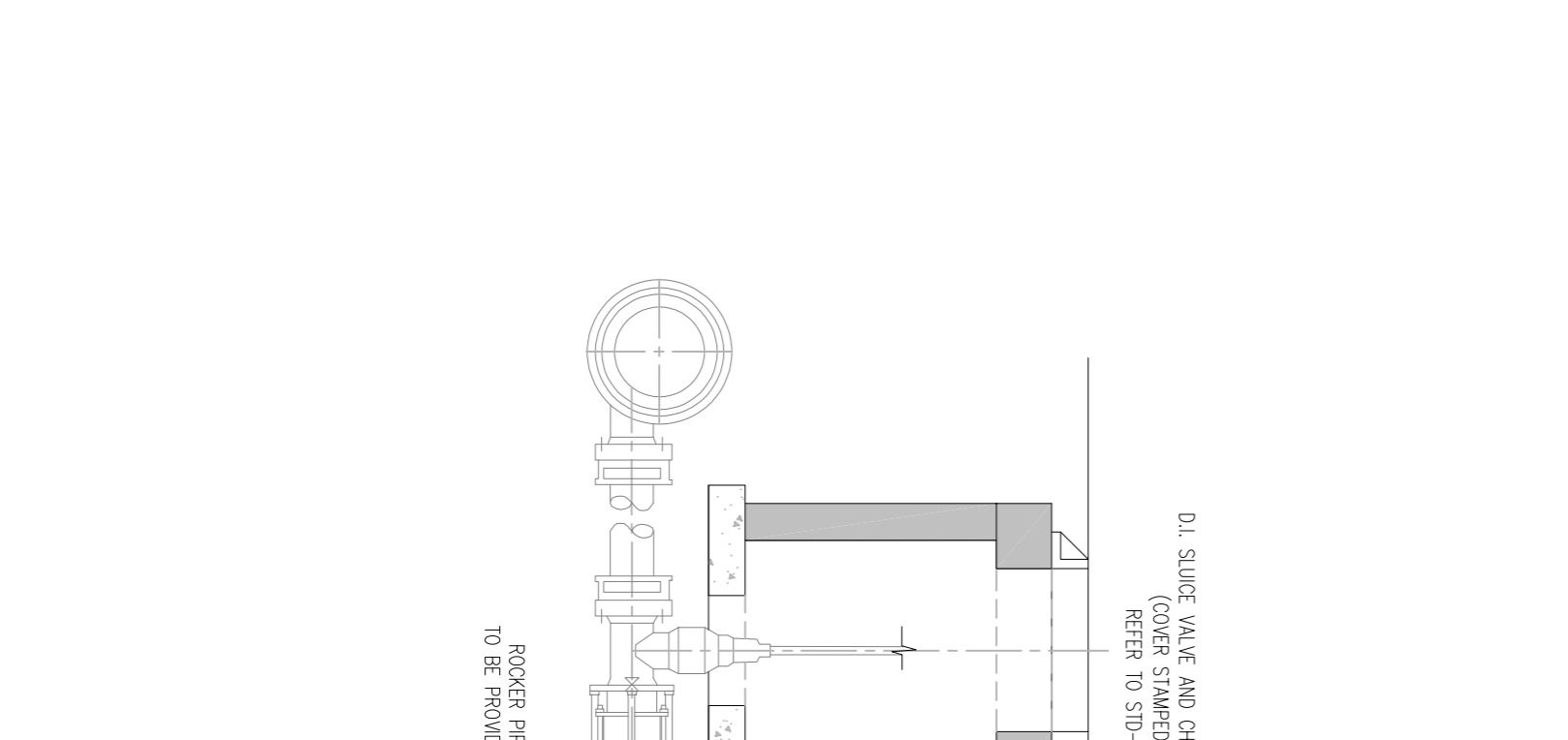
## DETAIL 04 - SLUICE VALVE FOR POLYETHYLENE (P.E.) PIPE (<math>\le 350\text{mm } \phi</math>)



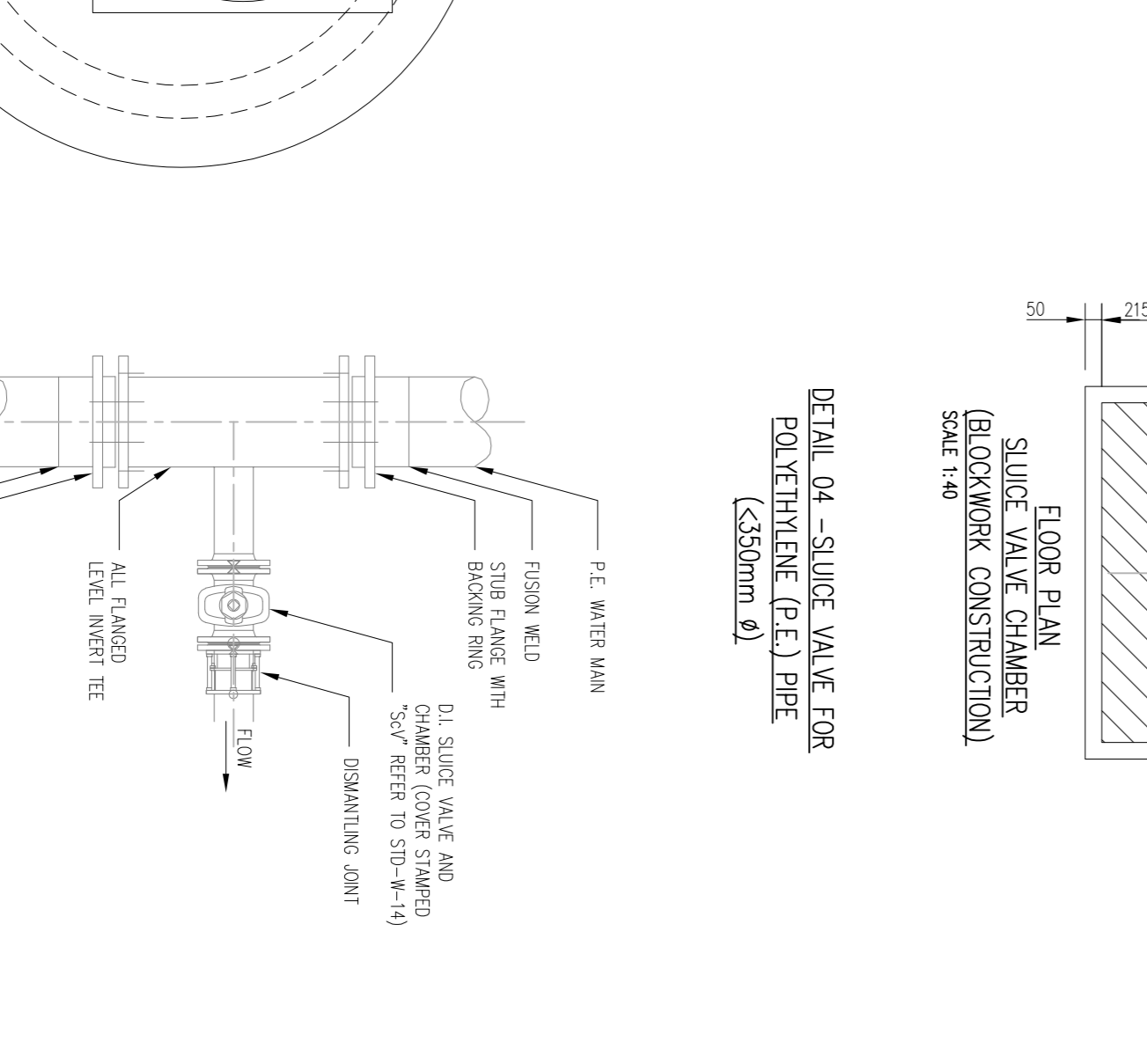
## DETAIL 03 - ON-LINE AIR VALVE FOR POLYETHYLENE (P.E.) PIPE



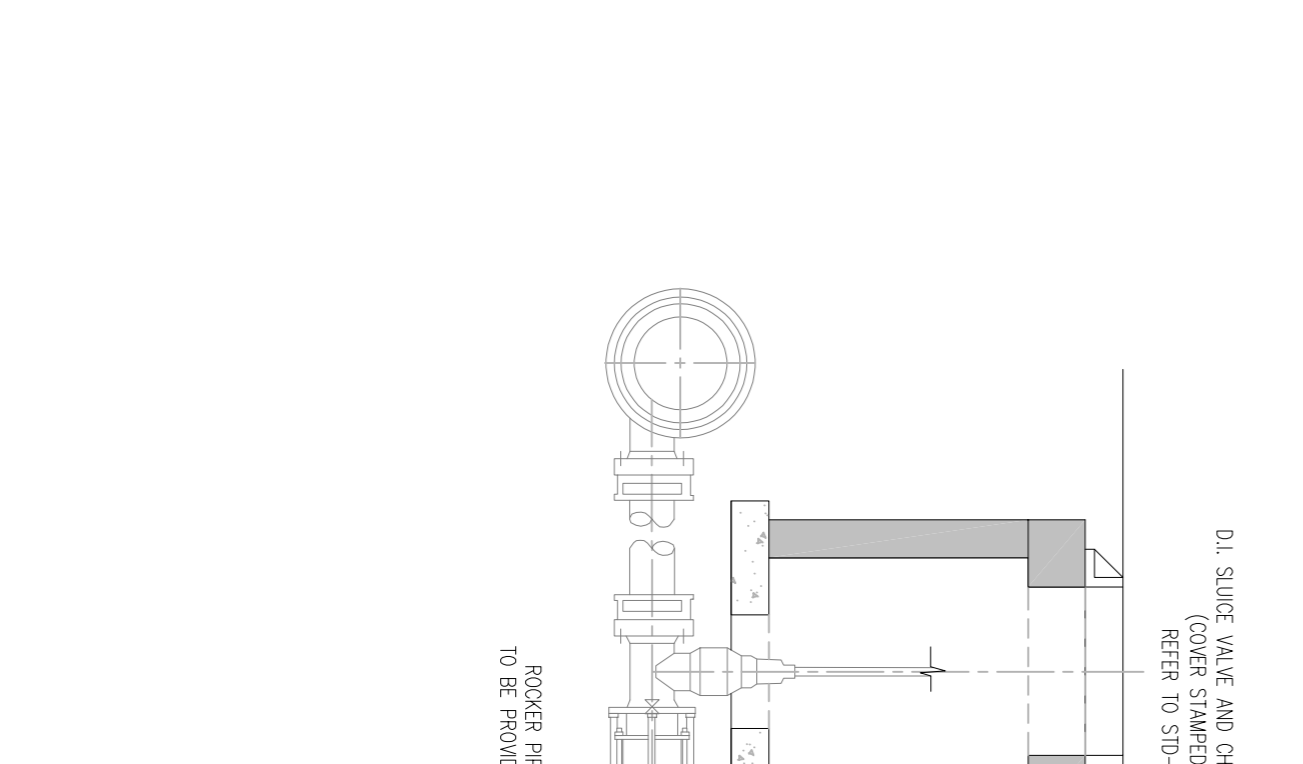
## DETAIL 01 - TRENCH BACKFILL AND BEDDING



## DETAIL 10 - SCOUR VALVE CHAMBER FOR RISING MAIN (<math>\le 200\text{mm } \phi</math>)



## DETAIL 10 - SCOUR VALVE CHAMBER FOR RISING MAIN (<math>\le 200\text{mm } \phi</math>)



PROJECT No.	23D059		
DRAWING No.	05A	REVISION	P
SCALE	AS SHOWN	DRAWN DATE	28.03.24
ISSUED BY	R.O.C.	CHECKED BY	L.M.
DESIGNED BY		APPROVED BY	D.H.

**PLANNING**

CLIENT: DUBLIN LAOHAIRE COUNTY COUNCIL

PROJECT NAME: RESIDENTIAL HOUSING DEVELOPMENT AT BLACKGLEN ROAD

DRAWING NAME: IRISH WATER WATERMAIN DETAILS

SHEET 1 OF 4

**HAYES HIGGINS PARTNERSHIP**

The Glass House, 11 Coke Lane  
Smithfield, Dublin 7. Tel: 01 6612321  
E-mail: admin@hayeshiggins.ie  
Our House Lane, Kilderry, Tel: (0849) 7764710  
Email: info@hh.ie