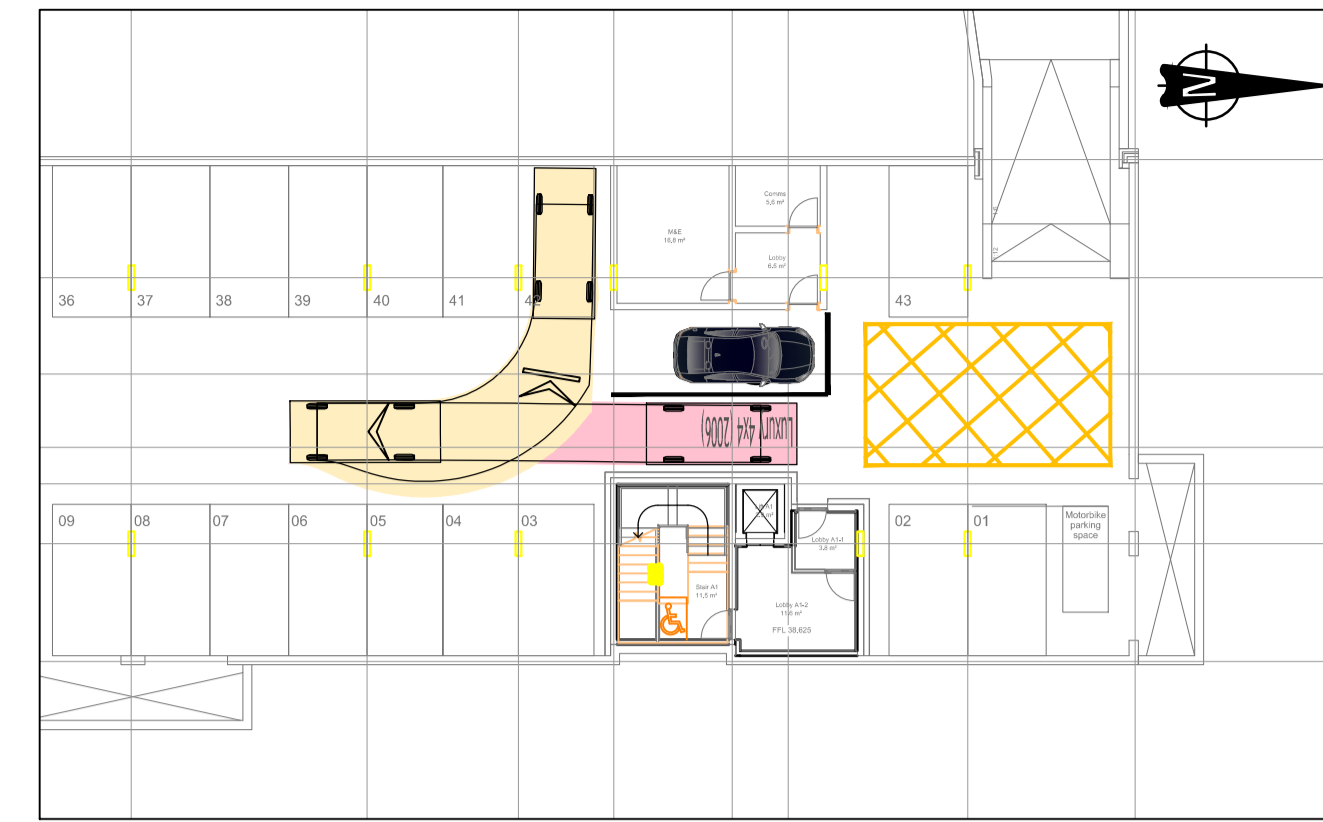
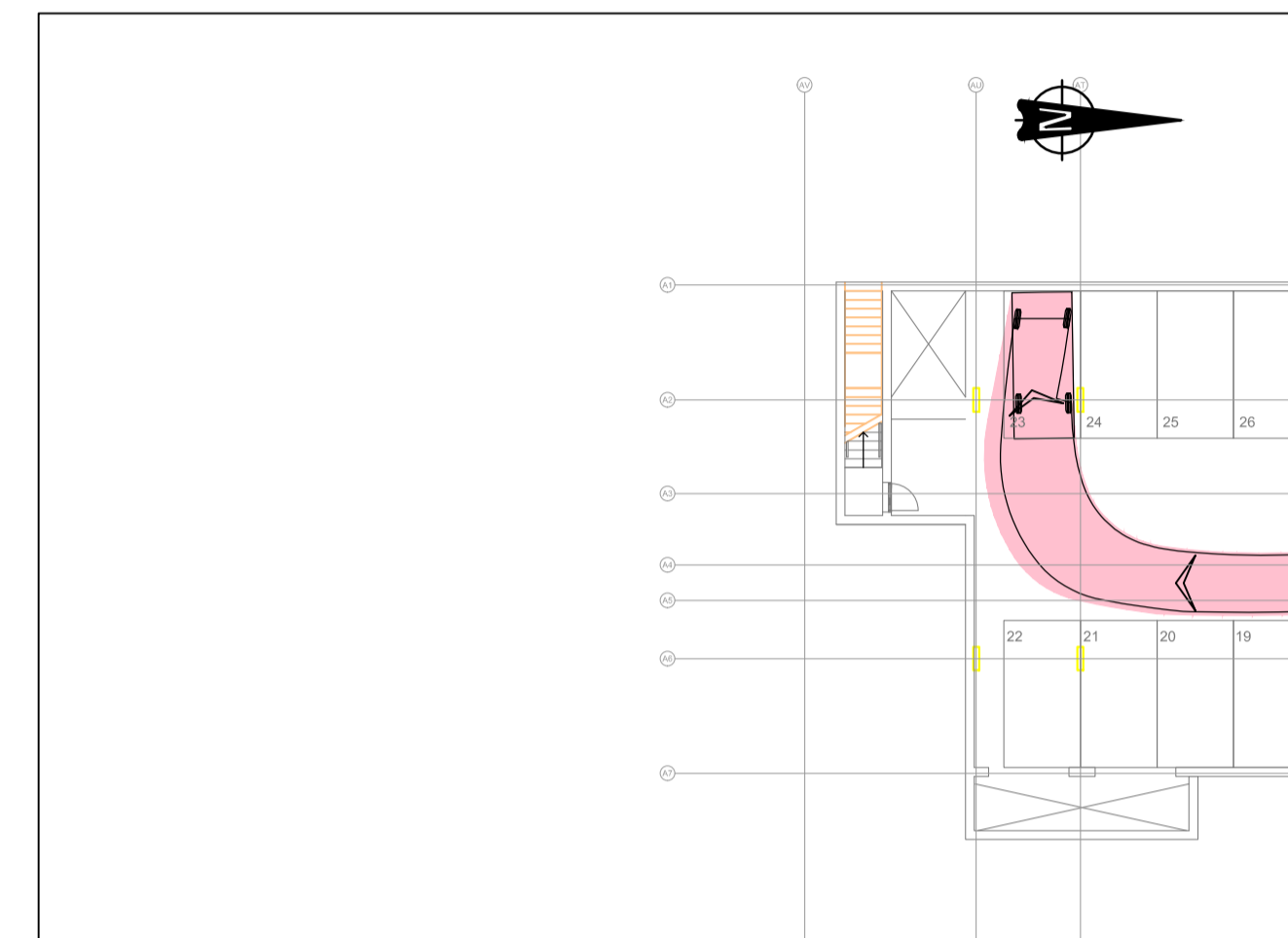


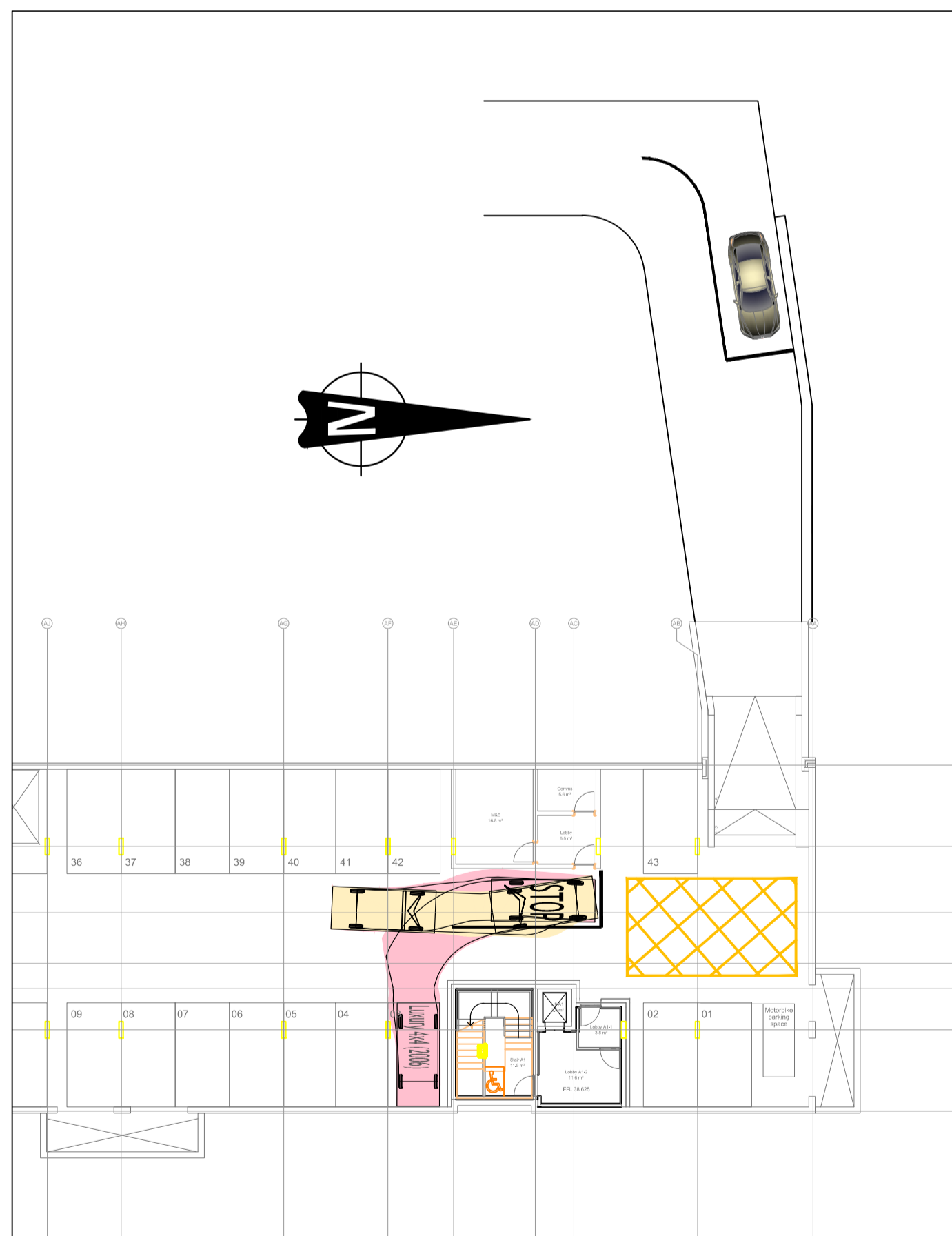
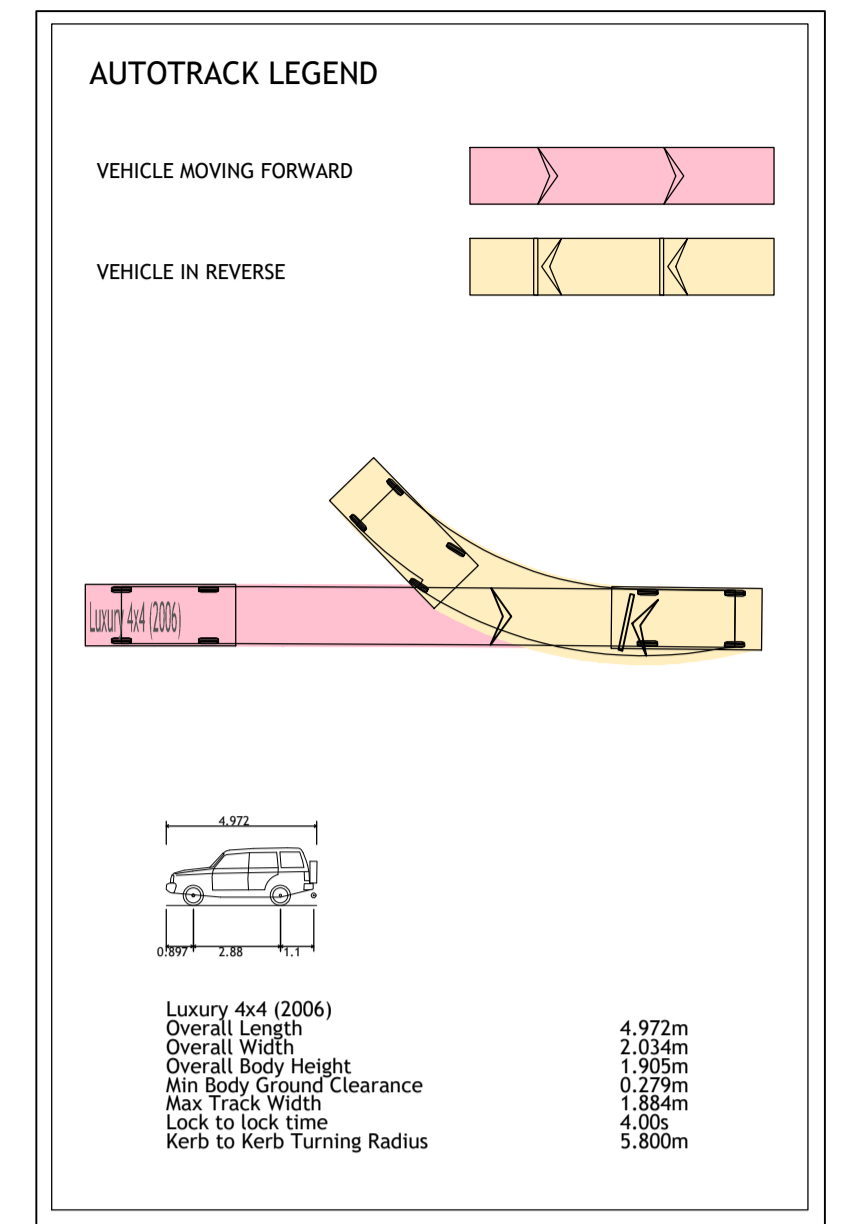
DETAILS 1 - PRIVATE CAR ENTERING BASEMENT CAR PARK AND PARKING IN BAYS 22 & 03  
NOT TO SCALE



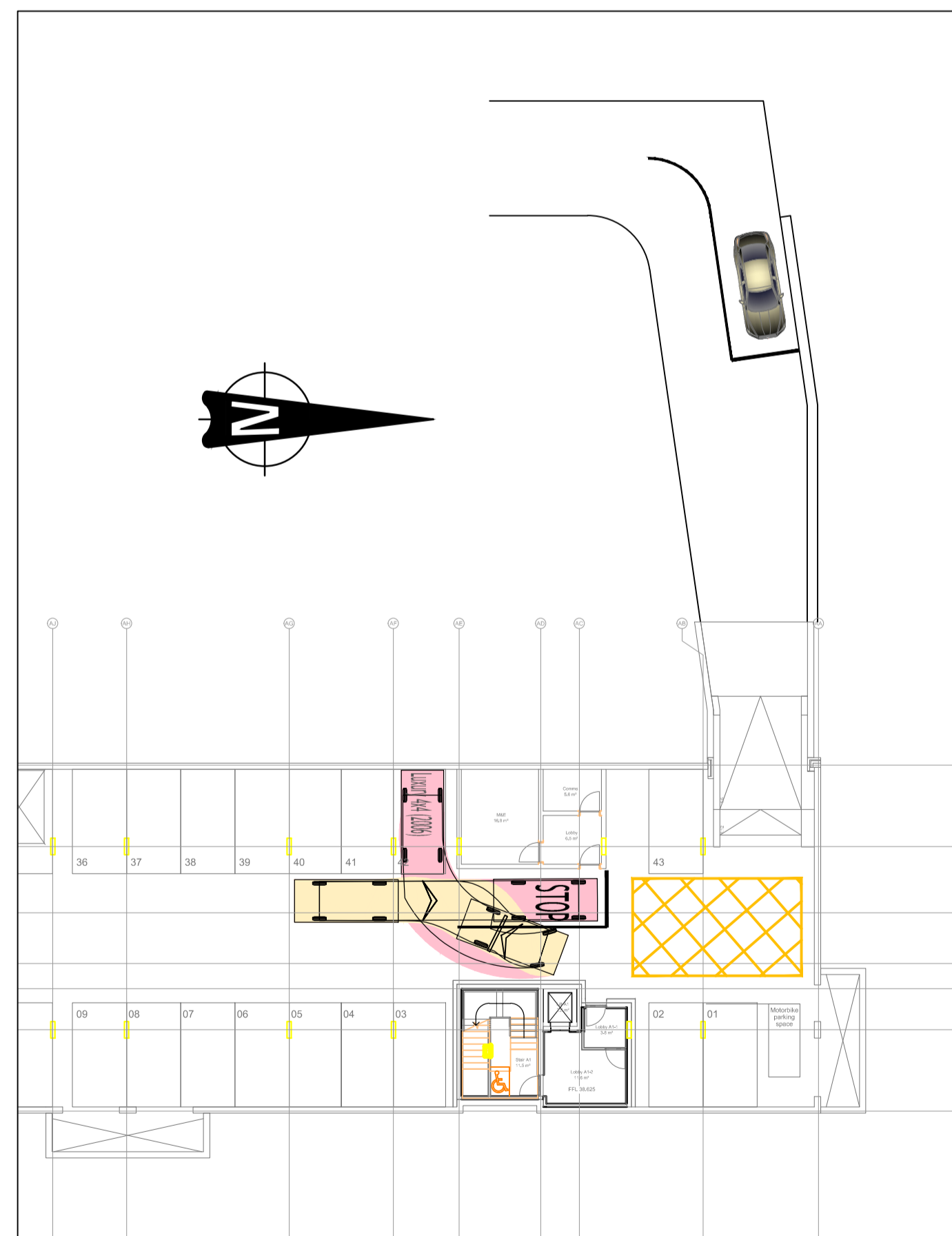
DETAILS 2 - PRIVATE CAR PARKING IN BAY 42  
NOT TO SCALE



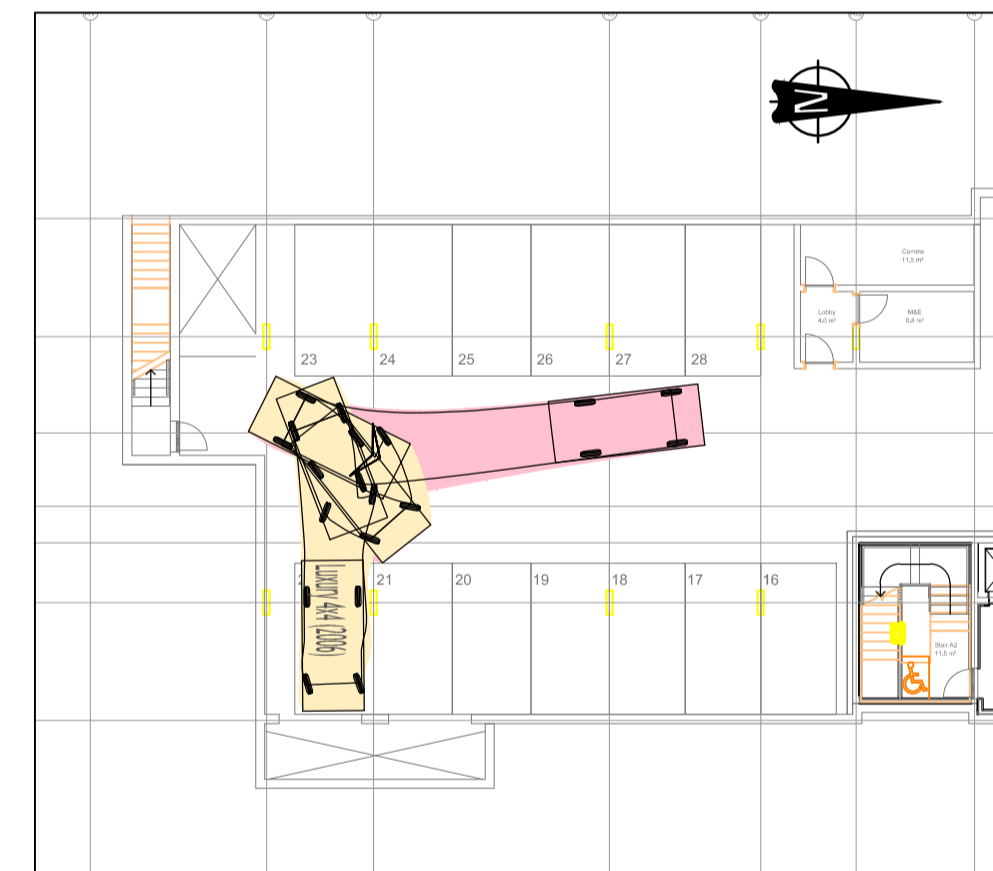
DETAILS 3 - PRIVATE CAR PARKING IN BAY 23  
NOT TO SCALE



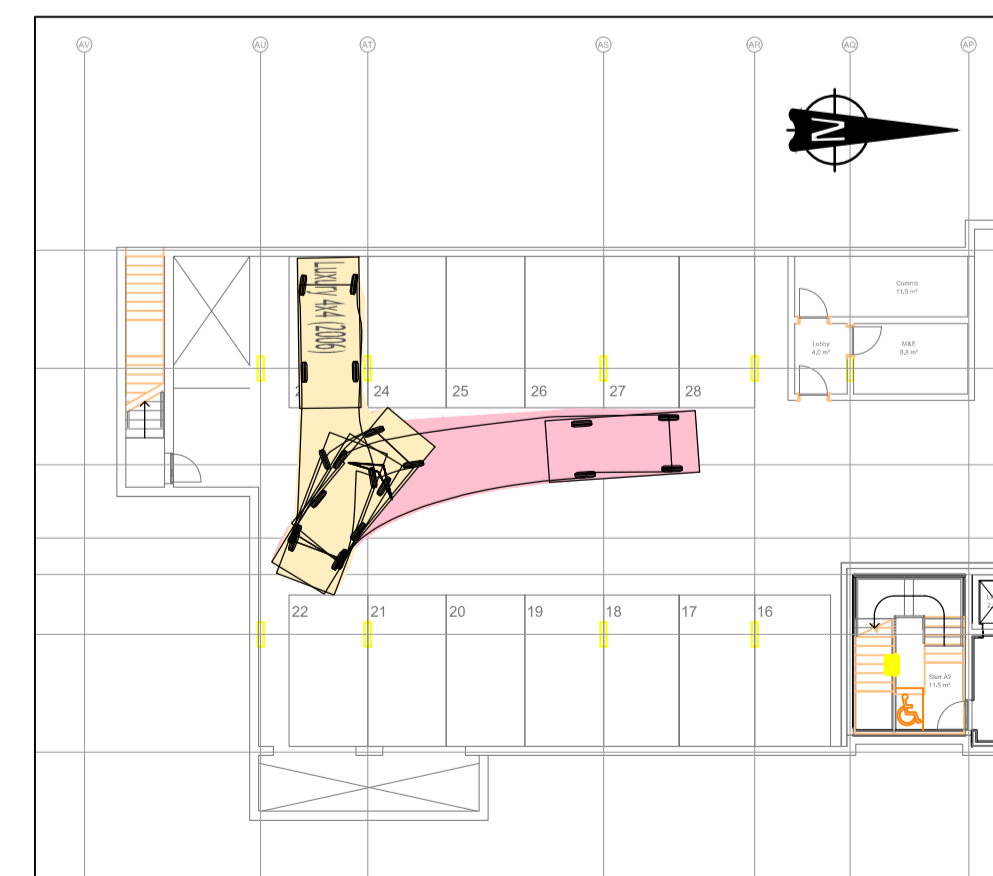
DETAILS 4 - PRIVATE CAR EXITING PARKING BAY 03  
NOT TO SCALE



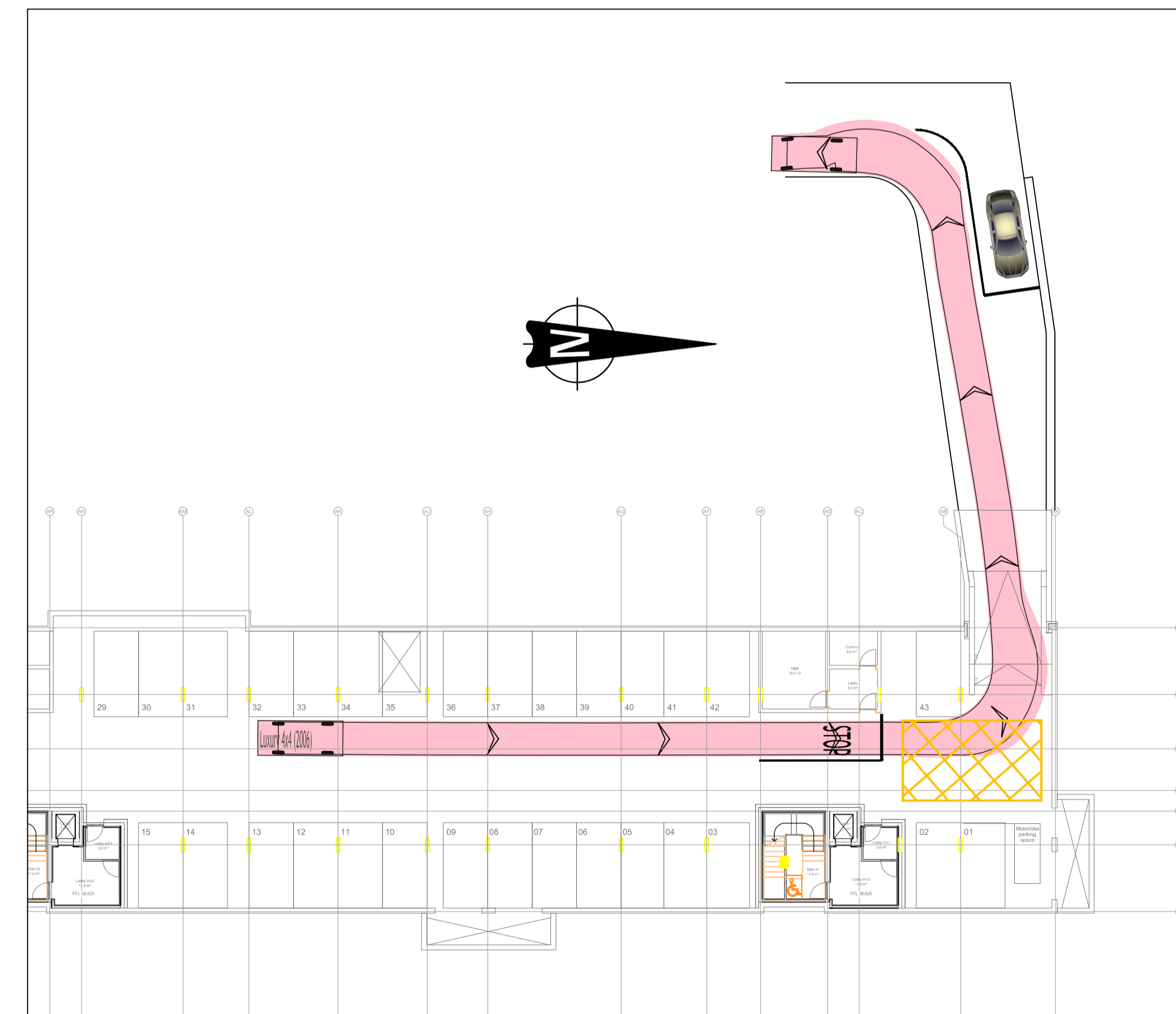
DETAILS 5 - PRIVATE CAR EXITING PARKING BAY 42  
NOT TO SCALE



DETAILS 6 - PRIVATE CAR EXITING PARKING BAY 22  
NOT TO SCALE



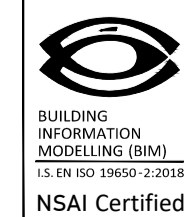
DETAILS 7 - PRIVATE CAR EXITING PARKING BAY 23  
NOT TO SCALE



DETAILS 8 - PRIVATE CAR EXITING CAR PARK  
NOT TO SCALE

© PUNCH Consulting Engineers

This drawing and any design hereon is the copyright of the Consultants and must not be reproduced without their written consent. All drawings remain the property of the Consultants. Figured dimension only to be taken from this drawing. Consultants to be informed immediately of any discrepancies before work proceeds.



Rev	Amendment	By	Date	Rev	Amendment	By	Date
P01	PLANNING ISSUE	FM	15-12-2025				
P02	PLANNING ISSUE	FM	23-02-2026				

By	Date	Client:

**PUNCH**  
consulting engineers  
Dublin | Limerick | Cork | Galway | Glasgow  
Carnegie House Library Road,  
Dun Laoghaire, Co. Dublin, A96 C7W7  
t+353 1 271 2200 | w punchconsulting.com

Project: RESIDENTIAL DEVELOPMENT LEHAUNSTOWN, CHERRYWOOD			
Title: AUTOTRACK PRIVATE CAR - BASEMENT CAR PARK			
Drawn: F. McGibbon	Date drawn: 15-12-2025	Technician Check: P.J. Mulcahy	Engineer Check: Mark Richardson
Project No: 232250	Model Ref: 232250-PUNCH-01-XX-M2-C-0603	Drawing Status: AO - PLANNING	Approved: Leonard Brennan
Scale @ A1: 1:250	Document Ref: 232250-PUNCH-01-XX-DR-C-0603	Revision No: P02	