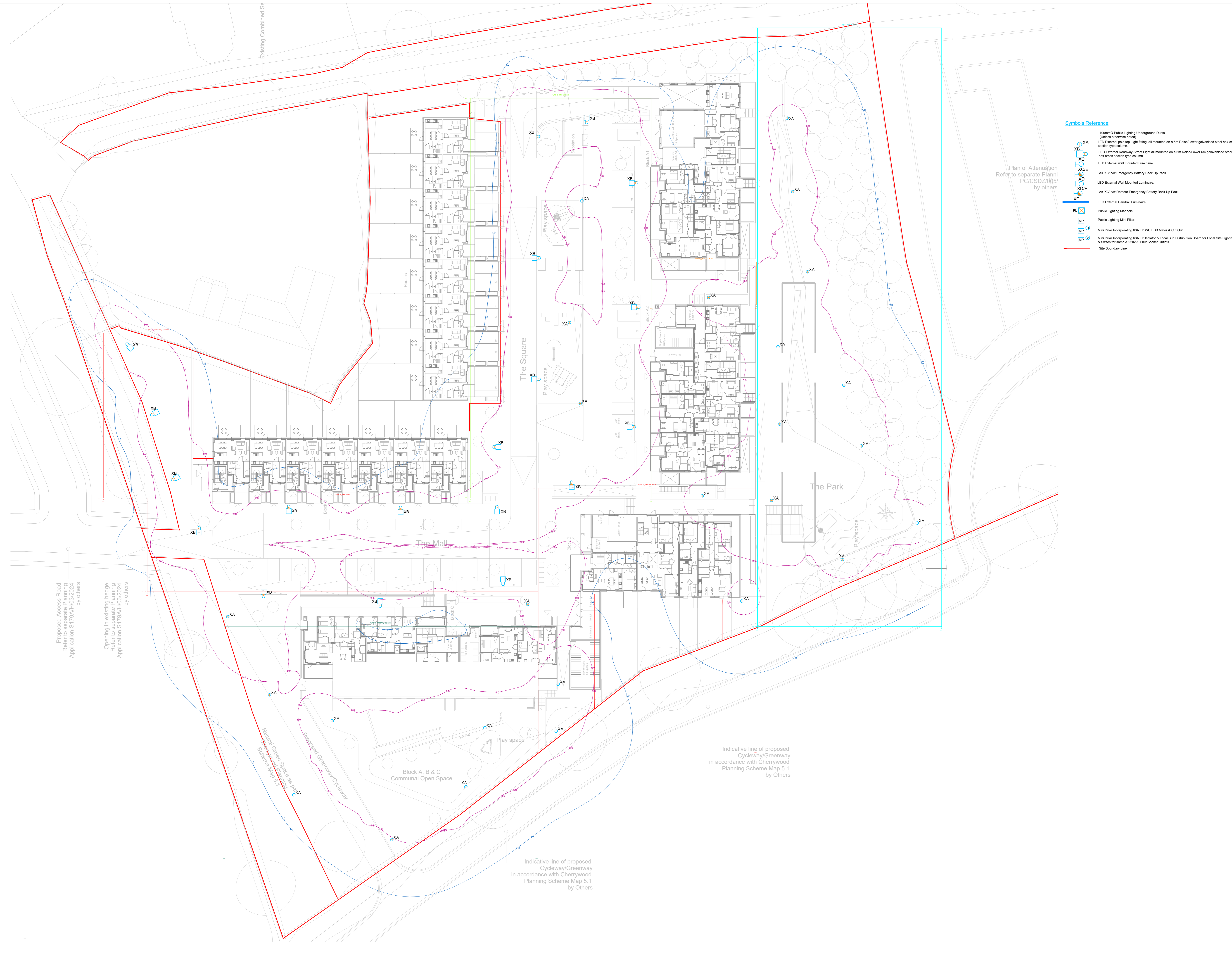


Existing Combined S...



Plan of Attenuation  
 Refer to separate Planni  
 PC/CSDZ/005/  
 by others

**Symbols Reference**

- 100mmØ Public Lighting Underground Ducts (Unless otherwise noted)
- LED External pole top Light fitting, all mounted on a 6m Raised/Lower galvanised steel hex-cross section type column.
- LED External Roadway Street Light all mounted on a 6m Raised/Lower 6m galvanised steel hex-cross section type column.
- LED External wall mounted Luminaire.
- As 'XC' c/w Emergency Battery Back Up Pack
- LED External Wall Mounted Luminaire.
- As 'XC' c/w Remote Emergency Battery Back Up Pack
- LED External Handrail Luminaire.
- Public Lighting Manhole.
- Public Lighting Mini Pillar.
- Mini Pillar Incorporating 63A TP WC ESB Meter & Cut Out.
- Mini Pillar Incorporating 63A TP Isolator & Local Sub Distribution Board for Local Site Lighting & Switch for same & 220v & 110v Socket Outlets.
- Site Boundary Line

Proposed Access Road  
 Refer to separate Planning  
 Application S179A/H/03/2024  
 by others

Opening in existing hedge  
 Refer to separate Planning  
 Application S179A/H/03/2024  
 by others

Natural Green Space at Park  
 Scheme Map 5.1

Proposed Greenway/Cycleway

Indicative line of proposed  
 Cycleway/Greenway  
 in accordance with Cherrywood  
 Planning Scheme Map 5.1  
 by Others

Indicative line of proposed  
 Cycleway/Greenway  
 in accordance with Cherrywood  
 Planning Scheme Map 5.1  
 by Others

**General Notes**

- Do not scale from this drawing. All dimensions indicated are in millimetres unless otherwise stated. Values of measurements on site.
- All dimensions shown on the drawing are other documents should be brought to the attention of the engineer.
- This drawing is not an installation drawing. It is the Contractor's responsibility to make their own enquiries and check drawings.
- The contents of this drawing shall be read in conjunction with the current editions of Architectural, Civil, Structural, Mechanical, Electrical, Security, Firework drawings and all relevant sections of the specifications.

**Legend**

**Notes**

- Refer to Diag. CHW-BWE-A1-XX-DR-ME-0500
- for notes.

Rev	Description	By	Date
001	ISSUED FOR PLANNING	CJM	21-02-2024
002	ISSUED FOR PLANNING	CJM	22-02-2024
003	ISSUED FOR TENDER	CJM	25-02-2024
004	ISSUED FOR TENDER	CJM	05-11-2024

Client: **Dún Laoghaire-Rathdown County Council**

Lead Consultant / MEP Designer: **Black & White Engineering**  
 88 Biscuiters Avenue  
 Dublin, A14 P0C2  
 Ireland  
 www.bw-engineering.com

Architect: **ARK Architects**  
 24 Lower Leeson Street,  
 Dublin 2

Project Title: **Cherrywood Housing, Cherrywood, Co. Dublin**

Drawing Title: **Site Layout  
 Site Lighting Isolines Layout**

Project Status: **ISSUED FOR PLANNING**

Classification	Revision Code
<b>ELECTRICAL</b>	<b>A4</b>

Project Number	Scale @ A0	Revision
<b>2343</b>	<b>1:250</b>	<b>C04</b>

Drawing Number: **CHW-BWE-XX-XX-DR-E-1001**