



- ### KEY - HARD LANDSCAPING
- BLOCK PAVING**
KILSARAN 'PLANE' BLOCK PAVING - NON-PERMEABLE
200X100X30MM CHARCOAL COLOUR WITH SILVER BORDER (OR SIMILAR AND APPROVED)
IMPERMEABLE SURFACES TO RUN OFF INTO BIORIENTATION AREAS - TO ENGINEERS SPECIFICATIONS.
 - BLOCK PAVING**
KILSARAN NEWIRANGE BLOCK PAVING
350X150X30MM SILVER GRANITE COLOUR (OR SIMILAR AND APPROVED).
 - BLOCK PAVING**
KILSARAN 'PERMOROCK' BLOCK PAVING
350X150X30MM CHARCOAL COLOUR (OR SIMILAR AND APPROVED).
 - FLAG PAVING**
KILSARAN 'SHILOURNE' FLAG PAVING
RECONSTITUTED SILVER GRANITE 600X600X50MM (OR SIMILAR AND APPROVED).
 - SMA / BUFF TONED ASPHALT SURFACE** (OR SIMILAR AND APPROVED)
TO HOME ZONE AREAS
TO ENGINEERS SPECIFICATIONS.
COLOUR TO BE AGREED WITH LANDSCAPE ARCHITECT.
 - EXPOSED AGGREGATE CONCRETE**
TO ENGINEERS SPECIFICATIONS.
 - VEHICULAR ASPHALT SURFACES**
TO ENGINEERS SPECIFICATIONS.
RAISED TABLES AS PER ENGINEERS SPECIFICATIONS.
 - EPDM SYNTHETIC PLAY SURFACE**
UNDER PLAY EQUIPMENT IN VIBRANT COLOURS
COLOURS TO BE AGREED WITH LANDSCAPE ARCHITECT.

- ### KEY - HARD LANDSCAPING ELEMENTS
- INTEGRATED PAVING AND LAWN**
EXPOSED AGGREGATE CONCRETE PADS INTEGRATED INTO CENTRAL LAWN
AS A DECORATIVE LANDSCAPE FEATURE AND TO ENCOURAGE INFORMAL PLAY.
PLEASE REFER TO THE ACCOMPANYING DETAILS / DESIGN REPORT FOR FURTHER SPECIFICATION.
 - EXPOSED AGGREGATE CONCRETE STEPS**
STEPS WITH INTEGRATED BREAKS TO ALLOW FOR INFORMAL SEATING.
PLEASE REFER TO THE ACCOMPANYING DETAILS / DESIGN REPORT FOR FURTHER SPECIFICATION.
 - EXPOSED AGGREGATE CONCRETE BENCHES**
PLEASE REFER TO THE ACCOMPANYING DETAILS / DESIGN REPORT FOR FURTHER SPECIFICATION.
 - KOMPAN 'ROBINA' NATURAL PLAY EQUIPMENT (PLAY ITEMS NO. 1-8)**
PLEASE REFER TO THE ACCOMPANYING DETAILS / DESIGN REPORT FOR FURTHER SPECIFICATION.
 - TREATED TIMBER BENCHES / TOP OF WALL SEATING**
'WOODY' BENCHES: SEATING BY IMCITE OR SIMILAR AND APPROVED.
PLEASE REFER TO THE ACCOMPANYING DETAILS / DESIGN REPORT FOR FURTHER SPECIFICATION.
 - TREE GRATES**
STRUCTURAL ROOT CELL SYSTEM CAPPED WITH TREE GRATES FOR TREES ADJACENT TO HARD SURFACES. ENSURING ADEQUATE ROOTING VOLUME AND PAVING PROTECTION.
PLEASE REFER TO THE ACCOMPANYING DETAILS / DESIGN REPORT FOR FURTHER SPECIFICATION.
 - GRASS MOUNDING**
PLEASE REFER TO THE ACCOMPANYING DETAILS / DESIGN REPORT FOR FURTHER SPECIFICATION.

- ### KEY - HARD LANDSCAPING BOUNDARIES
- BOUNDARY A - 2M HIGH WELDED-MESH FENCE**
STEEL POST BOX SECTIONS WITH WELDED MESH PANELS. ALL PANELS AND POSTS TO BE POWDER COATED BLACK RAL COLOUR. POST HOLES TO BE HAND-DRILLED WHERE WITHIN ROOT PROTECTION ZONES. PLEASE REFER TO THE ACCOMPANYING DETAILS FOR FURTHER SPECIFICATION.
 - BOUNDARY B**
1.8M HIGH CONCRETE POST AND TIMBER PANEL FENCE.
ACCOMPANYING SUITABLE GRAVEL BOARD BASE.
PLEASE REFER TO THE ACCOMPANYING DETAILS FOR FURTHER SPECIFICATION.
 - BOUNDARY C**
2M HIGH BRICK WALL WITH APPROPRIATE DETAILED BRICK CAPPING.
SELECTED BRICK TO MATCH UNITS - TO ARCHITECTS DETAIL.
PLEASE REFER TO THE ACCOMPANYING DETAILS FOR FURTHER SPECIFICATION.

- ### KEY - SOFT LANDSCAPING
- PLANT MIX 1 - ORNAMENTAL & RAISED PLANTER MIX**
PLEASE REFER TO PLANTING PLAN FOR DETAILS/SPECIES.
 - PLANT MIX 2 - BIORIENTATION MIX**
PLEASE REFER TO PLANTING PLAN FOR DETAILS/SPECIES.
 - PLANT MIX 3 - NATIVE SHRUB RIPARIAN MIX**
PLEASE REFER TO PLANTING SCHEDULE FOR DETAILS/SPECIES.
 - MEADOW GRASS**
PLEASE REFER TO PLANTING PLAN FOR DETAILS/SPECIES.
 - AMENITY GRASS**
HARDWEARING SEED MIX TO BE USED.
 - PRIVATE LAWN SPACE**
HARDWEARING SEED MIX TO BE USED.
 - HEDGE 1**
1.2M HIGH BEECH HEDGE WITH INTEGRATED WIRE FENCING.
SECURE, CHILD-SAFE BOUNDARY. SEE PLANTING PLAN FOR SPECIES/DETAILS.
 - HEDGE 2**
PLEASE REFER TO PLANTING PLAN FOR DETAILS/SPECIES.
 - TREE MIX 1 - ORNAMENTAL STANDARD MIX**
PLEASE REFER TO PLANTING PLAN FOR DETAILS/SPECIES.
 - TREE MIX 2 - FRONT GARDEN / RAISED PLANTER MIX**
PLEASE REFER TO PLANTING PLAN FOR DETAILS/SPECIES.
 - TREE MIX 3 - RESIDENTIAL STREET TREE MIX**
PLEASE REFER TO PLANTING PLAN FOR DETAILS/SPECIES.
 - TREE MIX 4 - NATIVE WOODLAND MIX**
PLEASE REFER TO PLANTING PLAN FOR DETAILS/SPECIES.
 - PLANT MIX 5 - FEATURE TREE MIX**
PLEASE REFER TO PLANTING PLAN FOR DETAILS/SPECIES.
 - EXISTING TREES - TO BE RETAINED**
PLEASE REFER TO ARBORIST'S REPORT FOR FURTHER INFORMATION.
 - EXISTING HEDGEROW - TO BE RETAINED**
PLEASE REFER TO ARBORIST'S REPORT FOR FURTHER INFORMATION.
 - EXISTING TREES - TO BE REMOVED**
PLEASE REFER TO ARBORIST'S REPORT FOR FURTHER INFORMATION.
 - EXISTING HEDGEROW - TO BE REMOVED**
PLEASE REFER TO ARBORIST'S REPORT FOR FURTHER INFORMATION.

Plan of Attenuation Pond 2A
Refer to separate PC/CSD by others.

REGIONAL ATTENUATION POND 2A, CHERRYWOOD - PART OF SEPARATE CONTRACT. FOR FURTHER DETAILS INCLUDING THE LANDSCAPE PROPOSAL FOR THIS AREA REFER TO ROUGHAN O'DONOVAN DRAWINGS P203-ROD-GEN-SW-02-CD-3003
TRESSES TO BE CLEAR OF PROPOSED WASTEWATER SEWER IN ACCORDANCE WITH USICE EIREANN REQUIREMENTS AND CLEAR OF SURFACE WATER SEWER IN ACCORDANCE WITH DLRC REQUIREMENTS.
1.5M MINIMUM EXCLUSION ZONE HAS BEEN MAINTAINED BETWEEN SEWER AND ANY PROPOSED TREE PLANTING.

NATIVE WOODLAND PLANTING SCREENING THE FRILANTING EXCLUDED TO AVOID CONFLICTS WITH USICE EIREANN WAYLEAVE. PLEASE REFER TO ARCHITECTURAL AND ENGINEERING DRAWINGS FOR FURTHER INFORMATION REGARDING THIS WAYLEAVE.

'HOME ZONE' AREA TO ENCOURAGE FREE AND SAFE NAVIGATION THROUGH THE DEVELOPMENT WITH A PARTICULAR EMPHASIS ON CHILDREN BEING ABLE TO PLAY BOTH WITHIN SIGHT OF THEIR HOMES AND IN THE NATURAL ENVIRONMENT. ADDITIONALLY, PLAY FACILITIES ARE PURPOSEFULLY DESIGNED CENTRALLY TO PROVIDE SAFE RECREATIONAL OPPORTUNITIES WITHIN THE COMMUNITY WITH PASSIVE SURVEILLANCE.

TREE MIX 3 - RESIDENTIAL STREET TREE MIX TO PROVIDE SHELTER, NOISE MITIGATION, MITIGATION OF PARTICULATE POLLUTION.
UNIVERSALLY ACCESSIBLE PATH SYSTEM.

TREE GRATES - STRUCTURAL ROOT CELL SYSTEM CAPPED WITH TREE GRATES FOR TREES ADJACENT TO HARD SURFACES. ENSURING ADEQUATE ROOTING VOLUME AND PAVING PROTECTION.

KEY FEATURE PLAY ITEM WITH EPDM SURFACE SURROUNDED BY A 1.2M HIGH BEECH HEDGE WITH INTEGRATED WIRE FENCING SECURE, CHILD-SAFE BOUNDARY.
2M WIDE MAINTENANCE GRASS STRIP TO TOP OF POND 2A
3M WIDE MAINTENANCE TREE PLANTING EXCLUSION ZONE AT BASE OF SLOPE TO FACILITATE MAINTENANCE.

CENTRAL PLAZA AREA WITH AGE FRIENDLY SEATING/TABLES 'WOODY' BENCHES: SEATING BY IMCITE OR SIMILAR AND APPROVED.
PLAZA SPACE TO STEP DOWN THROUGH SEAT-STEPS TO UNIQUELY COLOURED 'HOME ZONE' SHARED SURFACED AREA.

NATIVE WOODLAND PLANTING SCREENING POND 2A FROM THE DEVELOPMENT AND ENSURING A NET BIODIVERSITY GAIN FROM THE DEVELOPMENT, THROUGH THE ABUNDANT INTRODUCTION OF DIVERSE NATIVE SPECIES.

EXPOSED AGGREGATE CONCRETE STEPS UP TO UNIT ACCESS.

PROPOSED ATTENUATION TANK LOCATION SHOWN IN BLUE DASH

GRASS MOUNDING WITH INTEGRATED NATURAL PLAY OPPORTUNITIES CREATING A PLAYFUL SPACE TO ENCOURAGE SOCIAL AND INTERGENERATIONAL PLAY

IMPERMEABLE SURFACES TO RUN OFF INTO BIORIENTATION AREAS - TO ENGINEERS SPECIFICATIONS.

NATIVE WOODLAND PLANTING SCREENING POND 2A FROM THE DEVELOPMENT AND ENSURING A NET BIODIVERSITY GAIN FROM THE DEVELOPMENT, THROUGH THE ABUNDANT INTRODUCTION OF DIVERSE NATIVE SPECIES.

BIORIENTATION AREAS - LARGE BIORIENTATION AREAS USED TO ENSURE A NET BIODIVERSITY GAIN FROM THE SUD TREATMENTS, THROUGH THE USE OF DIVERSE BIORIENTATION PLANTING MIX.

CENTRAL LEVEL KICKABOUT LAWN WITH SEATING OPPORTUNITIES.

POTENTIAL FUTURE PEDESTRIAN CONNECTION - SUBJECT TO DETAILED DESIGN REVIEW.

200 SQ.M TEENAGE PLAY SPACE WITH APPROPRIATE PLAY EQUIPMENT, SEATING OPPORTUNITIES AND PASSIVE SURVEILLANCE.

PROPOSED ACCESS ROAD REFER TO SEPARATE PLANNING APPLICATION S178A/H032024 BY OTHERS

UNIVERSAL ACCESS ROUTE TO REAR PARK AREA

OPENING IN EXISTING HEDGE REFER TO SEPARATE PLANNING APPLICATION S178A/H032024 BY OTHERS

EXISTING HEDGEROW TO BE RETAINED AND SUPPLEMENTED WHERE APPROPRIATE WITH NATIVE TREE PLANTING - CONSERVING AND ENHANCING EXISTING BIODIVERSITY.

PRIVATE LAWN SPACE HARDWEARING SEED MIX TO BE USED.

EXISTING HEDGEROW TO BE RETAINED AND PROTECTED. PLEASE REFER TO ARBORIST'S REPORT FOR FURTHER INFORMATION. BOUNDARY TREATMENT ALONG HEDGEROW CONSIDERED TO ENSURE ACCESS/ EASE OF MAINTENANCE / MINIMAL IMPACT ON HEDGEROW WHILE MAXIMISING THE HEDGEROW'S VISUAL AMENITY AND ECOLOGICAL VALUE.

COMMUNAL AMENITY GARDEN PLAY AREA WITH AGE APPROPRIATE KOMPAN 'ROBINA' NATURAL PLAY EQUIPMENT.

BLOCK A, B & C COMMUNAL AMENITY GARDEN
THE COMMUNAL AMENITY GARDEN SPACE OFFERS A KICK-ABOUT AREA, DIVERSE SEATING OPTIONS, AND PLAY OPPORTUNITIES. ALL NESTLED WITHIN A BLEND OF EXISTING AND PROPOSED LANDSCAPING FEATURES. THE SPACE AIMS TO FOSTER A STRONG SENSE OF COMMUNITY WITHIN THE DEVELOPMENT, ENCOURAGING SOCIAL INTERACTION AND RECREATIONAL PURSUITS FOR INDIVIDUALS OF ALL AGES, FROM TEENAGERS TO SENIORS.

PROPOSED GREENWAY/CYCLEWAY
SURFACE TO BE LAY ABOVE EXISTING GROUND LEVELS AND NO DIG DETAIL TO BE USED WITHIN ROOT PROTECTION AREA OF EXISTING TREES / HEDGEROW. ALL HEDGEROWS TO BE RETAINED AND PROTECTED TO THE GREATEST EXTENT POSSIBLE TO ENSURE THE MAINTENANCE OF CONNECTIVITY BETWEEN THE ECOLOGICAL CORRIDORS

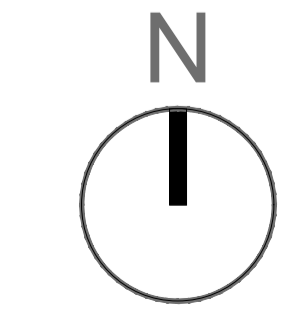
EXISTING TREE (T1400) TO BE RETAINED AND FEATURED WITH THE GREEN SPACE TO PROMOTE EXTERNAL RECREATION THAT IS INCLUSIVE OF GREEN INFRASTRUCTURE WITHIN THE OPEN SPACE WITHOUT CAUSING ADVERSE EFFECTS ON THE FUNCTIONS OF THE GREEN INFRASTRUCTURAL ASSETS.

NATURAL GREEN SPACE AS PER CHERRYWOOD PLANNING SCHEME MAP S.1

INDICATIVE LINE OF PROPOSED CYCLEWAY/GREENWAY IN ACCORDANCE WITH CHERRYWOOD PLANNING SCHEME MAP S.1 BY OTHERS.

DO NOT SCALE FROM THIS DRAWING. WORK ONLY FROM FIGURED DIMENSIONS
ALL ERRORS AND OMISSIONS ARE TO BE REPORTED TO LANDSCAPE ARCHITECT

REV:	DATE:	REFERENCE:	BY:	REV:	DATE:	REFERENCE:	BY:
A	2026-02-18	LANDSCAPE DESIGN PLAN	CC				



MURPHY+SHEANON
Horticulture & Landscape Architecture

Contact : colum@murphysheanon.ie
Tel : +353860787147
Address : Ground Floor, Mountlawn House, Lower Mountlawn Road, Glengageary, Co.Dublin

CLIENT: DUN LAOGHAIRE-RATHDOWN COUNTY COUNCIL C/O ABK ARCHITECTS	DRAWING NUMBER: 531-PD-01.2 PROJECT NUMBER: 23-531
PROJECT: LEHAUNSTOWN RESIDENTIAL DEVELOPMENT, CHERRYWOOD	PROJECT STATUS: PLANNING
TITLE: LANDSCAPE DESIGN PLAN	SHEET NO: REV. A
CAD FILE REFERENCE: h:\shared drives\murphy sheanon office\m+s_office\jobs\2312531 - cherrywood\m+s\2. planning\23-531-pd-01 v04.03.26.dwg	DATE: FEBRUARY 2026
	SCALE: 1:400 / A1
	DRAWN BY: CC
	CHECKED BY: DM/CS