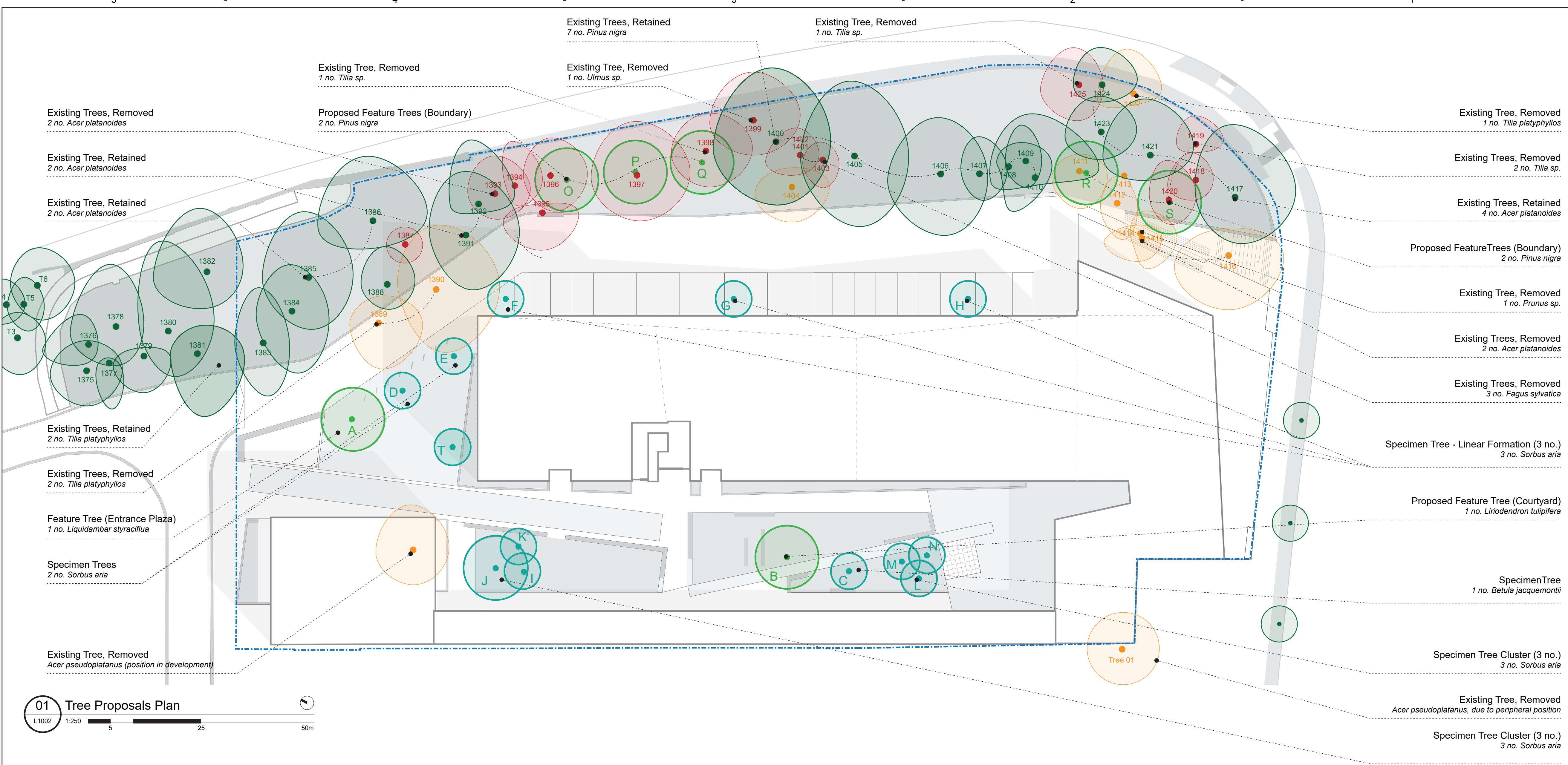


- Site Boundary
Refer to design report
- Building Edge
See architectural floor plans
- Proposed Feature Tree
Refer to Tree Schedule
- Proposed Specimen Tree
Refer to Tree Schedule
- Existing Tree, Retained
Refer to Tree Schedule
- Existing Tree, Removed
Due to Condition
- Existing Tree, Removed
Due to Position
- Tree Number
Refer to Arboticulturalist's report



01 Tree Proposals Plan
 L1002 1:250 5 25 50m

Existing Trees on Site				
Tree Survey (Summary of details)			Site Design	
Number	Species	Category	Proposal	Assessment
Tree 01	Acer pseudoplatanus	C1	Removed	Obstructive location (Library)
Tree 02	Acer pseudoplatanus	C1	Removed	Obstructive location (Block A)
Tree 03	Acer pseudoplatanus	C1	Untouched	Outside of site boundary
Tree 04	Acer pseudoplatanus	C1	Untouched	Outside of site boundary
Tree 05	Acer pseudoplatanus	C1	Untouched	Outside of site boundary
Tree 06	Acer pseudoplatanus	C1	Untouched	Outside of site boundary
1375	Acer platanoides	B1	Retained	Good condition, unobstructive location
1376	Ulmus sp.	C1	Removed	Poor Condition
1377	Acer platanoides	C1	Retained	Unobstructive position
1378	Acer platanoides	C1	Retained	Unobstructive position
1379	Acer platanoides	B1	Retained	Good condition, unobstructive location
1380	Acer platanoides	B1	Retained	Good condition, unobstructive location
1381	Tilia platyphyllos	A1	Retained	Good condition, unobstructive location
1382	Tilia platyphyllos	B1	Retained	Good condition, unobstructive location
1383	Tilia platyphyllos	B1	Retained	Good condition, unobstructive location
1384	Tilia platyphyllos	B1	Retained	Good condition, unobstructive location
1385	Acer platanoides	B1	Retained	Good condition, unobstructive location
1386	Acer platanoides	B1	Retained	Good condition, unobstructive location
1387	Tilia sp.	C1	Removed	Poor Condition
1388	Acer platanoides	B1	Retained	Good Condition
1389	Tilia platyphyllos	A1	Removed	Obstructive position
1390	Tilia platyphyllos	A1	Removed	Obstructive position
1391	Acer platanoides	B1	Retained	Good condition, unobstructive location
1392	Acer platanoides	C1	Retained	Unobstructive location
1393	Tilia sp.	B1	Removed	Poor condition, understorey clearance
1394	Acer platanoides	C1	Removed	Obstructive position
1395	Acer platanoides	U	Removed	Very poor Condition
1396	Tilia sp.	B1	Removed	Poor condition, understorey clearance

Existing Trees on Site				
Tree Survey (Summary of details)			Site Design	
Number	Species	Category	Proposal	Assessment
1397	Acer platanoides	C1	Removed	Poor Condition
1398	Tilia sp.	B1	Removed	Poor condition, understorey clearance
1399	Ulmus sp.	C1	Removed	Poor Condition
1400	Pinus nigra	B2	Retained	Good condition, site character
1401	Fagus sylvatica	B2	Removed	Understorey clearance
1402	Fagus sylvatica	B2	Removed	Understorey clearance
1403	Fagus sylvatica	C1	Removed	Poor position
1404	Cotoneaster horizontalis (4 no.)	C1	Removed	Obstructive position
1405	Pinus nigra	B2	Retained	Good condition, site character
1406	Pinus nigra	B2	Retained	Good condition, site character
1407	Pinus nigra	B2	Retained	Good condition, site character
1408	Pinus nigra	B2	Retained	Good condition, site character
1409	Pinus nigra	B2	Retained	Good condition, site character
1410	Pinus nigra	B2	Retained	Good condition, site character
1411	Prunus cerasifera	U	Removed	Very poor Condition
1412	Acer pseudoplatanus	U	Removed	Very poor Condition
1413	Prunus cerasifera	U	Removed	Very poor Condition
1414	Prunus sp.	U	Removed	Obstructive position (+ poor condition)
1415	Acer platanoides	C1	Removed	Obstructive position (+ poor condition)
1416	Acer platanoides	B1	Removed	Obstructive position
1417	Acer platanoides	B1	Retained	Good Condition
1418	Acer platanoides	C1	Removed	Poor Condition
1419	Tilia sp.	C1	Removed	Poor Condition
1420	Tilia sp.	C1	Removed	Poor Condition
1421	Acer platanoides	B1	Retained	Good Condition, site character
1422	Tilia platyphyllos	B1	Removed	Obstructive position
1423	Acer platanoides	B1	Retained	Good Condition, site character
1424	Acer platanoides	B1	Retained	Good Condition
1425	Tilia sp.	B1	Removed	Obstructive position

Proposed Trees on Site			
Code	Species	Size	Condition
A	Liquidambar styraciflua	40-45 Cmg.	8m. High, root-balled
B	Liriodendron tulipifera	40-45 Cmg.	8m. High, root-balled
C	Betula jacquemontii	Multi-stem	3m. High
D	Sorbus aria	20-25 Cmg.	5-6m. High, root-balled
E	Sorbus aria	20-25 Cmg.	5-6m. High, root-balled
F	Sorbus aria	20-25 Cmg.	5-6m. High, root-balled
G	Sorbus aria	20-25 Cmg.	5-6m. High, root-balled
H	Sorbus aria	20-25 Cmg.	5-6m. High, root-balled
I	Sorbus aria	20-25 Cmg.	5-6m. High, root-balled
J	Sorbus aria	20-25 Cmg.	5-6m. High, root-balled
K	Sorbus aria	20-25 Cmg.	5-6m. High, root-balled
L	Sorbus aria	20-25 Cmg.	5-6m. High, root-balled
M	Sorbus aria	20-25 Cmg.	5-6m. High, root-balled
N	Sorbus aria	20-25 Cmg.	5-6m. High, root-balled
O	Pinus nigra	4-5m. Hght.	Root-balled
P	Pinus nigra	4-5m. Hght.	Root-balled
Q	Pinus nigra	4-5m. Hght.	Root-balled
R	Pinus nigra	4-5m. Hght.	Root-balled
S	Pinus nigra	4-5m. Hght.	Root-balled
T	Betula jacquemontii	Multi-stem	3m. High

Proposed Planting on Site		
Species	Size	Average Planting Density
Courtyard Zone (Shrub and Perennial Mix)		
Calamagrostis x acutiflora 'Karl Foerster'	2 litre pot, 1000-1200mm height	5 / m ²
Verbena bonariensis	2 litre pot, 300-400mm height	5 / m ²
Lavandula angustifolia 'Munstead'	2 litre pot, 300-400mm height	6 / m ²
Roadway Buffer Zone (Shrub Mix)		
Viburnum davidii	3 litre pot, 200-300mm height	5 / m ²
Rhus typhina	10 litre pot, 800-1000mm height	3 / m ²
Pinus mugo	5 litre pot, 300-400mm height	5 / m ²
Prunus laurocerasus	5 litre pot, 600-800mm height	5 / m ²
Viburnum tinus	3 litre pot, 300-400mm height	5 / m ²
Prunus laurocerasus 'Otto Luyken'	3 litre pot, 300-400mm height	5 / m ²

ISSUE / REVISION

I/R	Date	Description
B	15/07/20	Updated Planning Layout
A	23/01/19	Updated Planning Layout

ISO A1 594mm x 841mm
 Approved: ED FRAMPTON
 Checked: Kieran Cullen
 Designer: BART O'DOHERTY
 Project Management Initials:
 L1002
 Last saved by: O'DOHERTY (2018-10-09) Last Printed: 2011-05-25
 Filename: I:\EDBL\IPF001\1\PC\CDP\TECH\CHACAD\2018\ABK_ST LAWRENCE PARK\900_CAD_GIS\906_LA07_REF\SI\60578630-LAY-20-0000-L-1002.DWG