

LIGHT CIRCUITS	LIGHT TYPE	SWITCH FINISH	SWITCH TYPE	SWITCH LOCATION	LIGHTING DETAIL
HALL	1 X PENDANT	PVC	2 X SWITCHES	1 AT EACH END OF HALL (IF HALL >3M)	
KITCHEN CEILING	1 X PENDANT	PVC	2 X SWITCHES	1 NEAR KITCHEN/DOOR, 1 NEAR BEDROOMS/LIVING	
DINING AREA	1 X PENDANT	PVC	1 X SWITCH ON MULTI-GANG PLATE	SWITCH NEAR DOOR	
LIVING AREA	1 X PENDANT	PVC	1 X SWITCH ON MULTI-GANG PLATE	SWITCH NEAR DOOR	
BEDROOMS	1 X PENDANT	PVC	1 X SWITCH	SWITCH INSIDE DOOR	
BATHROOMS	IP RATED GU10 LED...	PVC	1 X SWITCH	SWITCH OUTSIDE ROOM	AS PER POD DETAIL
UTILITY/STORAGE	1 X PENDANT/DISC	PVC	1 X SWITCH	SWITCH OUTSIDE ROOM	

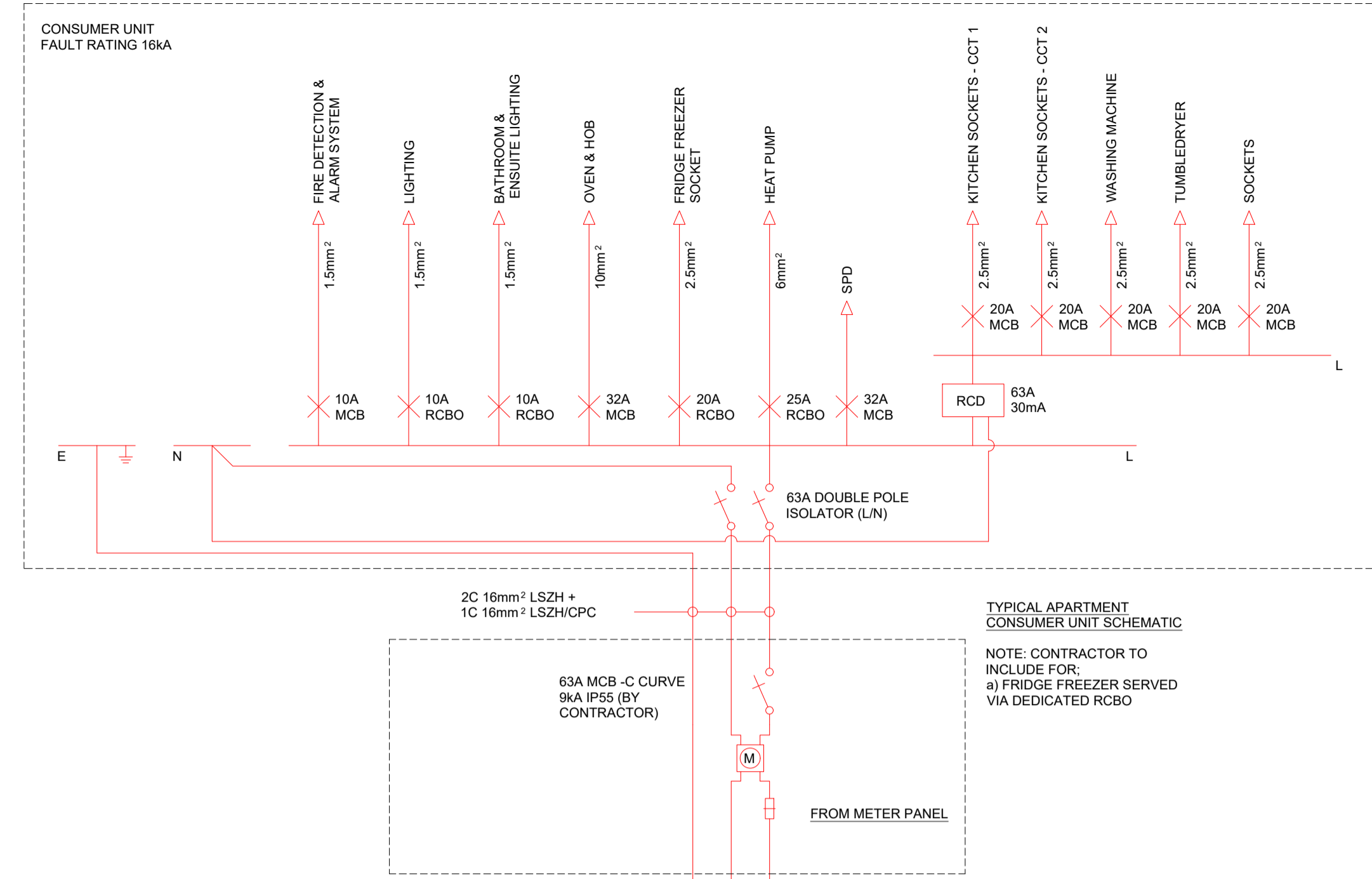
ROOM	FINISH	COAXIAL	DATA POINT	LOCATION
LIVING/DINING	FACEPLATE ONLY	NO CO-AX FIBRE TO THE TV POINT	VIRGIN MEDIA SIRO	VIRGIN MEDIA DEX-GREEN CABLE DIRECT TO TV LOCATION FROM CORRIDOR RISER. SIRO MICRO-TUBING DIRECT FROM TV LOCATION TO CORRIDOR RISER.

APARTMENT DOORS:	PROLINE ARC LOCK SET. 2 NO MASTER KEYS PER BLOCK.
BUILDING ENTRANCES:	TLI INTEGRE (OR SIMILAR) ACCESS CONTROL SYSTEM. AUDIO INTERCOM. LINKED TO FRONT ENTRANCE DOORS. SECURED BY MAGNETIC STRIKE-LOCKS (ABLOY OF SIMILAR) ENTRANCE CONTROL. HARD WIRED 2 WAY VOICE INTERCOM SYSTEM. NOTE: ALL DOORS FITTED WITH INTEGRAL GREEN BREAK GLASS UNITS AND LINKED TO THE FIRE ALARM SYSTEMS

ROOM	FINISH	NO OF SOCKETS	LOCATION
HALL	WHITE PVC	1 DOUBLE	CENTRAL POINT ALONG HALLWAY
1/2 BED KITCHEN	WHITE PVC	2 DOUBLES	ON BACK WALL OF KITCHEN
3 BED KITCHEN	WHITE PVC	3 DOUBLES	ON BACK WALL OF KITCHEN
LIVING / DINING	WHITE PVC	3 DOUBLES	2 DOUBLE SOCKETS BESIDE TV / MEDIA POINTS 1 DOUBLE ELSEWHERE IN ROOM
BEDROOMS	WHITE PVC	3 DOUBLES	2 DOUBLE SOCKETS EITHER SIDE OF BED 1 DOUBLE IN APPROPRIATE POSITION RELATIVE TO ROOM LAYOUT
UTILITY	WHITE PVC	1 DOUBLE	

EQUIPMENT	LOCATION	HEIGHT(mm)
LIGHTING SWITCH	GENERAL	1000
SOCKET OUTLET	GENERAL	400
	ABOVE WORKTOP	
	HIGH LEVEL	1800
FUSED CONNECTION UNIT	GENERAL	1000
	ABOVE WORKTOP	150 ABOVE WORKTOP
TEMPERATURE SENSORS	GENERAL	1000

THE ABOVE TABLE PROVIDES AN INDICATION OF THE MOUNTING HEIGHT OF ELECTRICAL ACCESSORIES. MEASUREMENT TO BE BOTTOM OF EQUIPMENT OUTLET FACEPLATE FROM FINISHED FLOOR LEVEL UNLESS DETAILED OTHERWISE REFER TO ARCHITECTS DRAWINGS FOR EXACT SETTINGS OUT OF ELECTRICAL SERVICES AND COORDINATE WITH KITCHEN SHOP DRAWINGS PRIOR TO FIRST FIX



TYPICAL CONSUMER UNIT WIRING

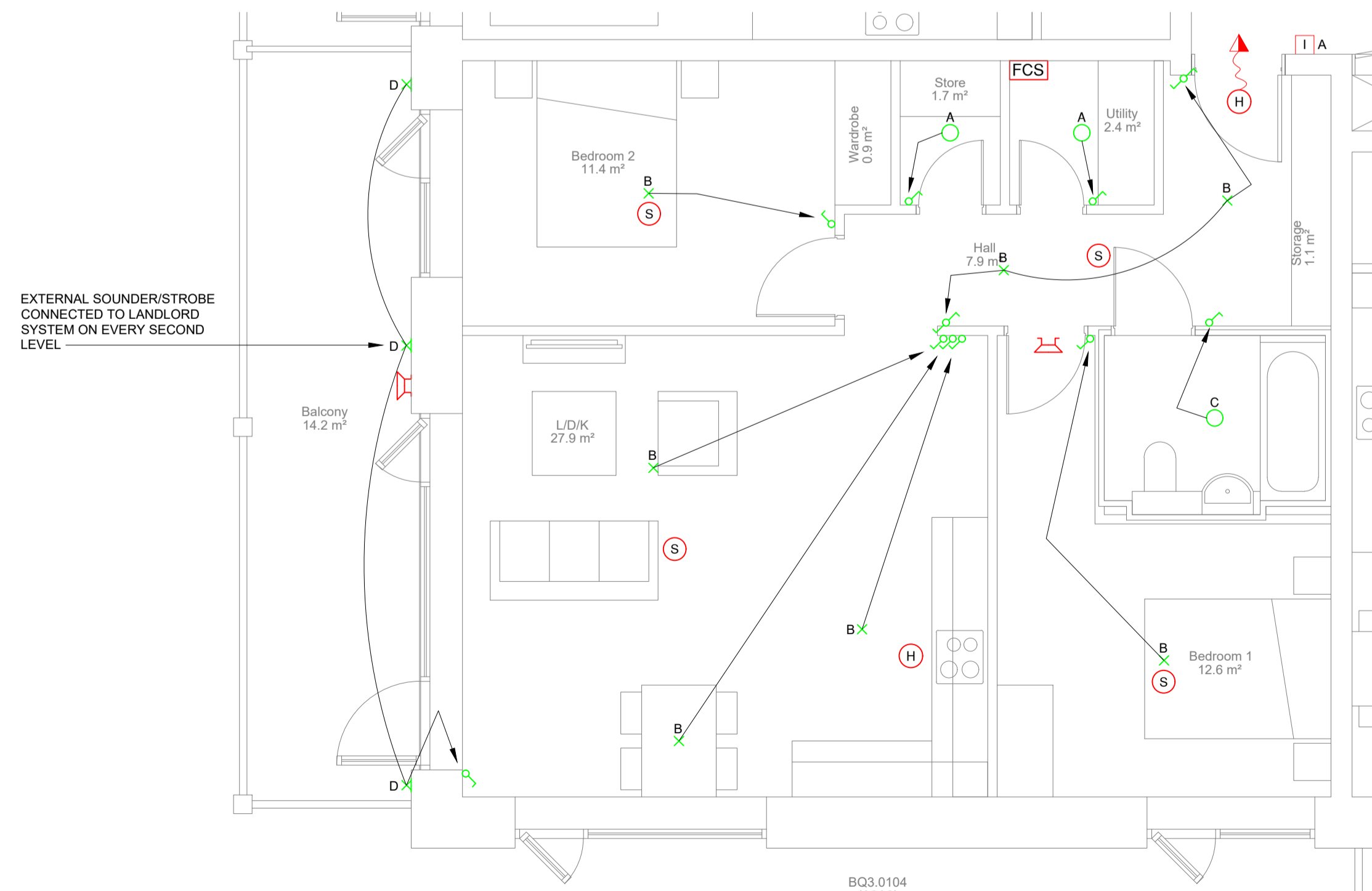
NOTES:  
1. THIS DRAWING IS THE PROPERTY OF DELAP & WALLER AND MAY ONLY BE USED WITH THEIR WRITTEN APPROVAL  
2. DO NOT SCALE FROM THIS DRAWING.

- APARTMENT ELECTRICAL LEGEND
- 13A UNSWITCHED SOCKET OUTLET
  - SINGLE SOCKET
  - DOUBLE SOCKET SWITCHED
  - DOUBLE SOCKET SWITCHED-USB
  - 45A DOUBLE POLE ISOLATION FOR HOB
  - HOB OUTLET PLATE
  - SINGLE DATA POINT
  - SIRO (BLANK PLATE)
  - VIRGIN MEDIA (BLANK PLATE)
  - 1 GANG LIGHT SWITCH
  - 2 WAY LIGHT SWITCH
  - SURFACE MOUNTED CIRCULAR LIGHT FITTING
  - PENDANT LIGHT FITTING
  - ANSELL SURFACE MOUNTED IP65 MINI GAMMA RANGE AS PER TECHNICAL SUBMITTAL
  - WALL MOUNTED EXTERNAL LIGHT FITTING IP65
  - RESIDENTIAL SMOKE DETECTOR W/ SOUNDER BASE. MAINS POWERED AND BATTERY BACKUP
  - RESIDENTIAL HEAT DETECTOR W/ SOUNDER BASE. MAINS POWERED AND BATTERY BACKUP
  - LED FIRE ALARM INDICATOR
  - LANDLORD FIRE ALARM SOUNDER
  - ELECTRIC PANEL HEATER
  - DISTRIBUTION BOARD
  - VOICE DOOR ENTRY HANDSET
  - DOOR ENTRY VOICE ONLY INTERCOM PANEL
  - FIRE ALARM HUSH SWITCH

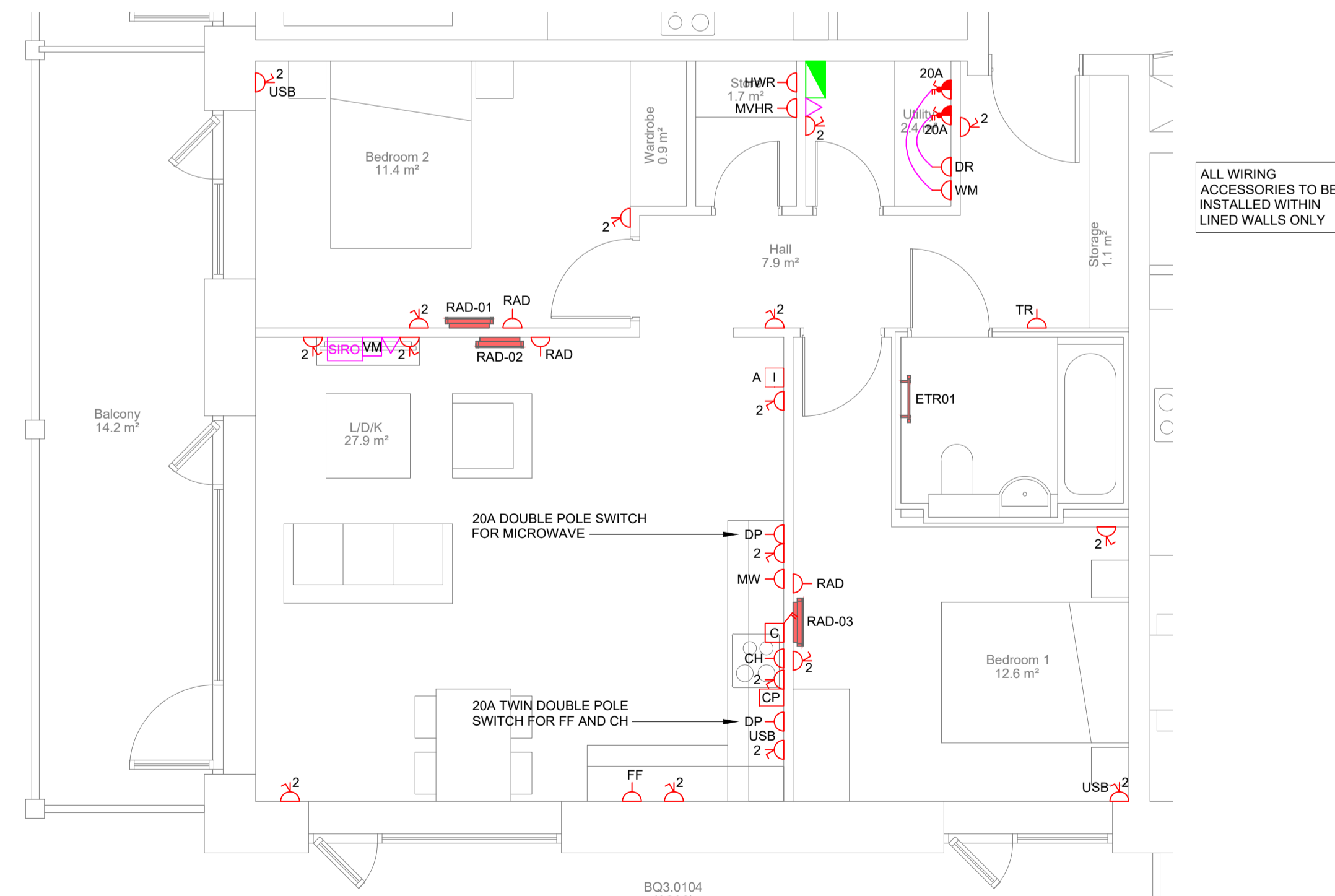
- ABBREVIATIONS
- TR TOWEL RAIL
  - FR FRIDGE
  - WM WASHING MACHINE
  - DR DRYER
  - DW DISHWASHER
  - CH COOKER HOOD
  - HWC HOT WATER CYLINDER
  - DP TWIN DP SWITCH - FRIDGE/COOKER HOOD
  - CP COOKING ISOLATOR
  - MW MICROWAVE

Electrical Panel Heater									
Ref	Description	Manufacturer	Model	Power Requirements	Qty	Dimensions (mm)			Controls
						W	D	H	
RAD01	Electric Panel Heater	Dimplex or Similar Approved	Qrad050RF	13A Switched Fused	1-off	513	105	546	Refer to Note 4
RAD02	Electric Panel Heater	Dimplex or Similar Approved	Qrad0100RF	13A Switched Fused	1-off	675	105	546	Refer to Note 4
RAD03	Electric Panel Heater	Dimplex or Similar Approved	Qrad0150RF	13A Switched Fused	1-off	756	105	546	Refer to Note 4
ETR01	Electric Towel Rail	Dimplex or Similar Approved	TRM21C5	13A Switched Fused	1-off	500	102	1175	

- Notes
- Electric panel heaters to be sized to match the dwelling heat loss
  - Equipment to be installed as per manufacturers recommendations and requirements
  - Location of radiators to be as per layouts
  - Electric heaters to be QRAD Intelligent manufactured by Dimplex or similar approved. Radiators to be installed c/w:
    - 24-Hour, 7 day time controller
    - 'ECO Start' delayed anticipatory control
    - Optional control via Dimplex App
    - BEAB approved
    - IQ Controller
  - Any deviation from selected equipment by Delap & Waller to be advised in writing clearly highlighting any change in design criteria i.e. kw rating, controls etc.
  - Electrical Contractor to site the Radiator Connection Point on the Flexed side of the unit.



APARTMENT TYPE A1A1 - LIGHTING AND FIRE ALARM



APARTMENT TYPE A1A1 - SMALL POWER & DATA

P01	RS	PRELIMINARY - FOR PLANNING	08/05/2026
REV	BY	DESCRIPTION	DATE
PROJECT: WOODBROOK DART GATEWAY			
 <a href="http://www.delapandwaller.com">www.delapandwaller.com</a> <span style="float: right;">Dublin: T +353 (0) 1 535 5900</span>			
CLIENT: 			
SCALE AT A1: 1:50	CHK: RS	APP: RS	
	DES: CW	DRW: CW	
WORK PACKAGE: M&E DESIGN			
DRAWING TITLE: APARTMENT TYPE A2A2 ELECTRICAL SERVICES			
DRAWING NUMBER: 25232-E103			
SATUS: PRELIMINARY - FOR PLANNING	REV: P01		