

**4 Mulberry Court  
Castleknock  
Dublin 15  
D15 F2V4**

Mob. 086-3819011  
e-mail - thetreefile@gmail.com

**Graphic Representation of Tree Form, Balance and Protection Zone**

Canopy Extent  
Cardinal Radii  
Category Code  
Stem Circumference

Root Protection Area (RPA)

Canopy is drawn to account for any natural asymmetry or imbalance. Crown Representation is scaled to account for north, east, west and south radii.

Root Protection Area (RPA)  
This area relates the "RPA" radius as defined in the Tree Survey Table and is measured from the tree centre. This area defines the preliminary Construction Exclusion Zone (CEZ) that must be protected by fencing from the potentially damaging effects of construction activity.

**Tree Quality (Categorisation)**

- Category "A" Trees (Green Bottom) Excellent Quality Trees
- Category "B" Trees (Blue Bottom) Good Quality Trees
- Category "C" Trees (Grey Bottom) Mediocre to Poor Quality Trees
- Category "U" Trees (Red Bottom) Dead, Dying or Otherwise Compromised Trees that are Unsustainable.

**Colour Coding For Groups and Hedges**

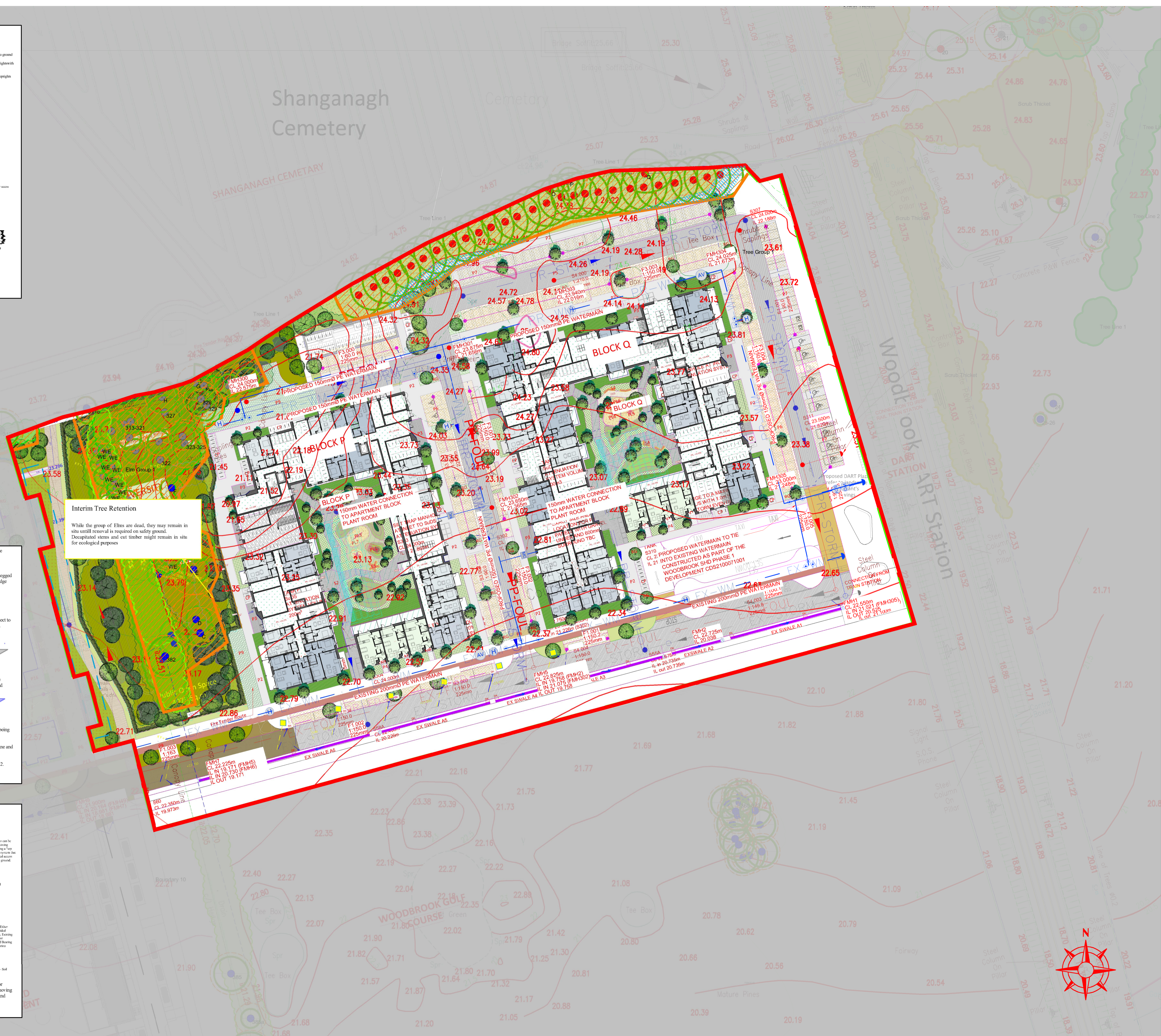
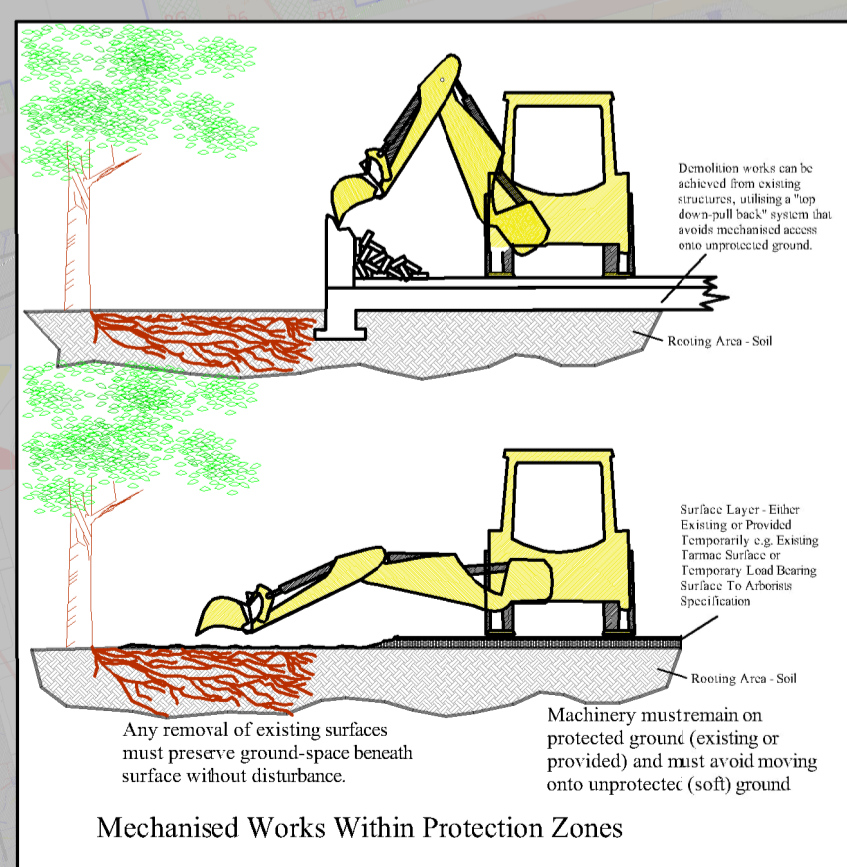
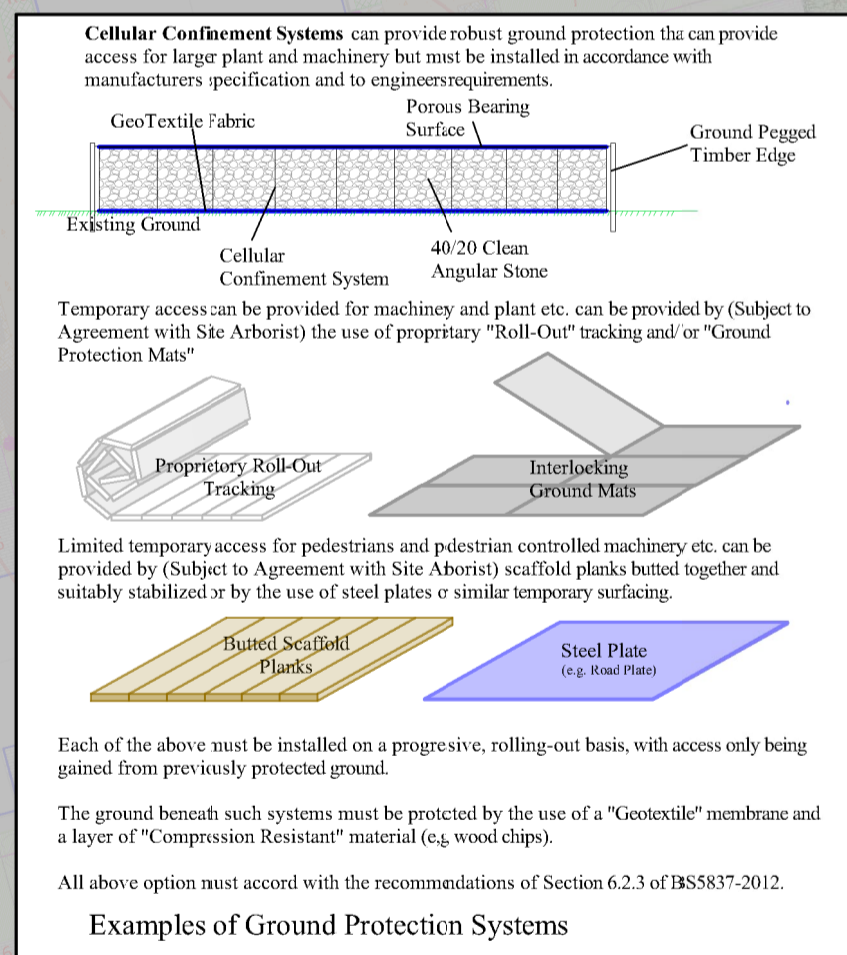
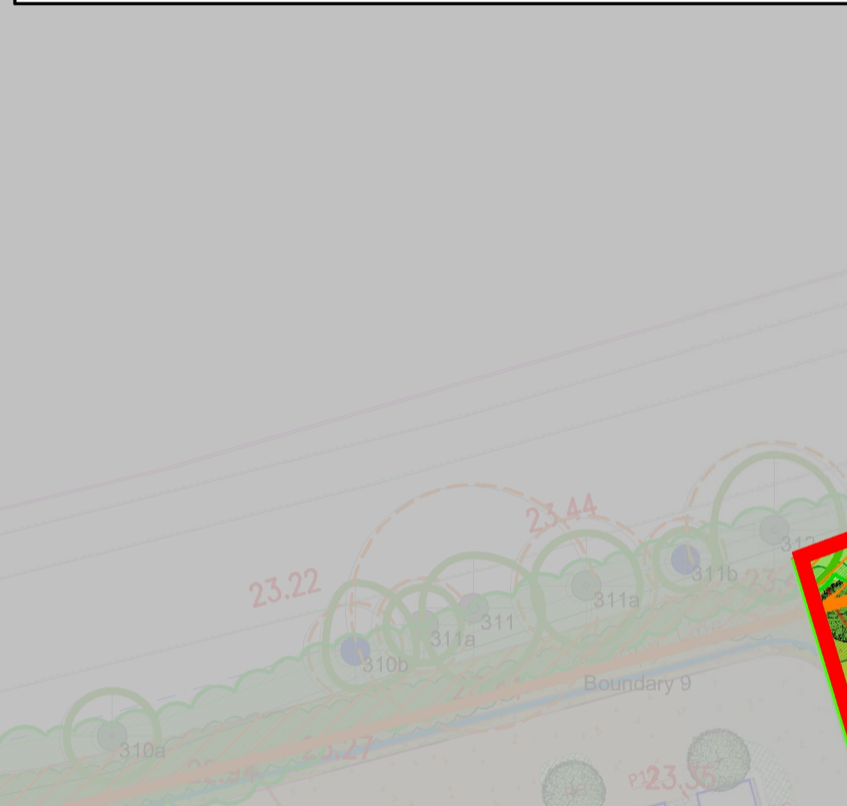
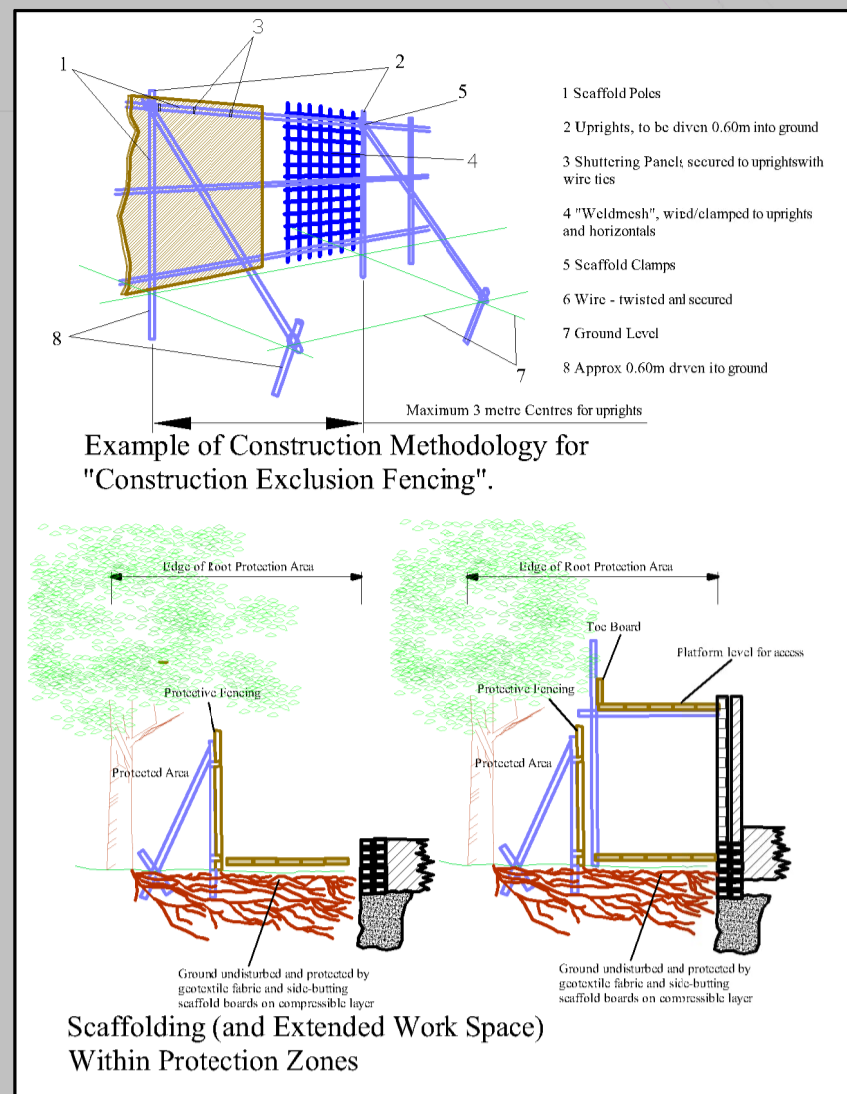
- Tree Line
- Hedges

**Colour Coding of Tree Retention or Removal**

- Trees Intended for Retention - Solid Green Crown Outline
- Trees Intended for Removal In Conjunction With Development Works - Broken Pink Crown Outline

**Colour Coding of Tree Protection Measures**

- Location Of Primary Construction Exclusion Fencing
- Area Of Primary Construction Exclusion Fencing
- Location of known works within "Construction Exclusion Zone", to be undertaken using low-impact methodologies and under the guidance of the Project Arborist



**This Drawing Must Be Read in Conjunction with the "Arboricultural Method Statement" at "Appendix 1" of the Associated Arboricultural Report**

Client: Aeval Unlimited Company  
Scale: 1:500 @ A1 Date: February 2026  
Project: Tree Survey - Woodbrook, Dublin Road, Bray  
Description: Tree Protection Plan  
Drawing Title: Woodbrook Dart Gateway Tree Protection Plan