

Deansgrange Village Improvements 2025

Active Travel

During the adoption of the Part 8 in 2023 a Motion was passed:

This Council calls on the Chief Executive to review Deansgrange village from an accessibility and public realm point of view. The review should include recommendations to improve the public realm, landscaping and vitality of the village, including improvements in conditions for walking, cycling and persons with impaired mobility through the main junction of the village and connecting residents in the vicinity of the village and both sides of Clonkeen road to the many shops and businesses of Deansgrange, the library, local schools and Clonkeen Park. The chief Executive should report on this review 12 months from the installation of the new Deansgrange cycle lane. (MFF 3) Agreed

- The purpose of this engagement is to establish if there is local support to progress with an upgrade of Deansgrange Village from an accessibility and public realm point of view
- 4 options have been developed and we are seeking feedback on which (if any) are favoured by the local community)
- The outcome of this engagement will form the basis for the development of future project (if any) and to support the application for funding to progress with a scheme



22 Bóthar Chluain Chaoin

Dublin, County Dublin



Google Street View

Sep 2024

See more dates

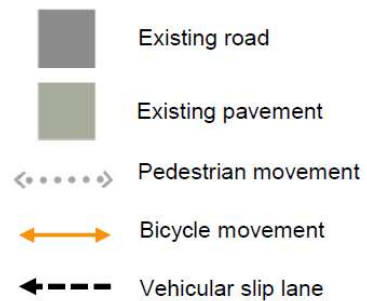
Opportunity Areas:

The currently road layout of the Village is car dominated with most of the space allocated to vehicles. There are opportunity areas where space can be reallocated from vehicles to provide for improved public realm:



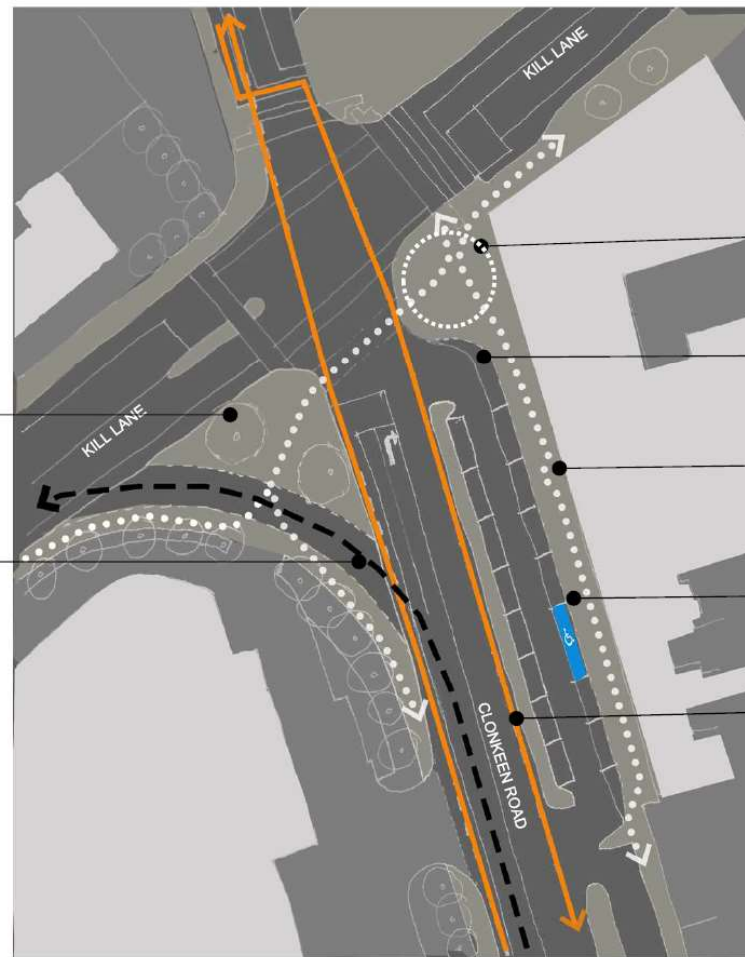
OPTION 1: DO NOTHING / DO MINIMUM

- Minimal upgrade to public realm, existing road layout remains.



Limited scope for enhancement of public realm in this location as is surrounded by traffic on all sides.

Slip lane for vehicular traffic retained. Potential conflict between cyclists and left turning vehicles remains. Limited scope for creation of useful space for public realm.



Extent of pedestrian space remains unchanged.

Scope for a pedestrian 'village node' limited to this area.

Parking on both sides of access road retained. Village area remains vehicle-dominated.

Trolley return bay remains an obstruction.

Pavement width unchanged - little scope for inclusion of greenery or public seating.

Unprotected southbound cycle lane on busy Clonkeen Road.

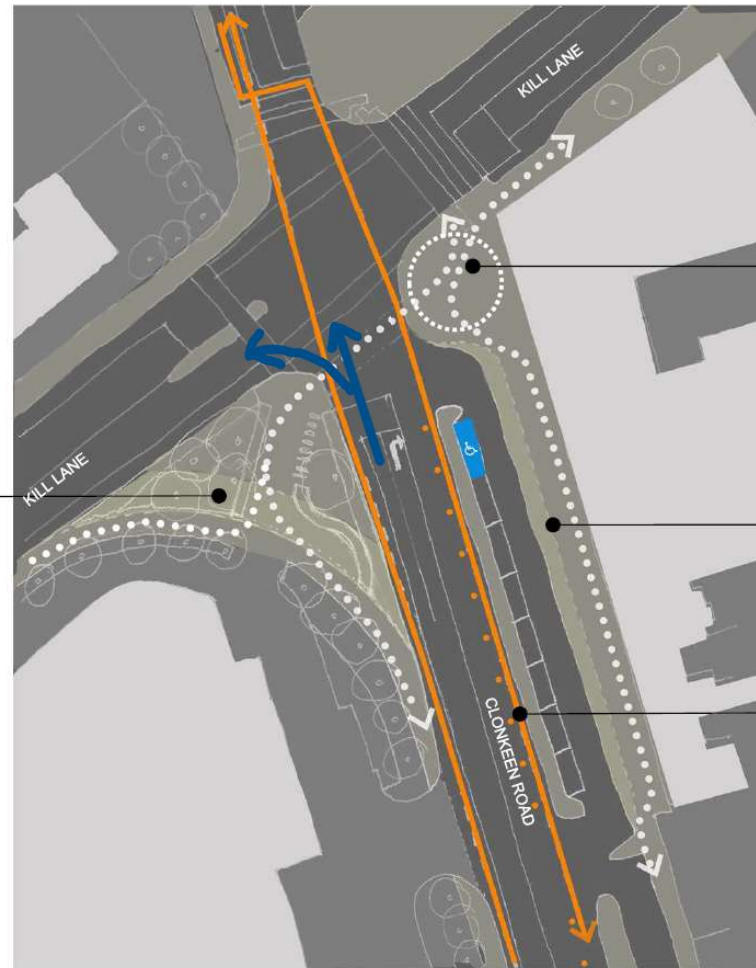
OPTION 2: EXTEND PAVEMENT AND CREATE IMPROVED PUBLIC REALM SPACE

- Row of parking in front of shops removed.
- Left turn slip road from Clonkeen Road removed; left turn provided at junction.



Slip road removed and replaced with extended public realm:

- Placemaking approach
- Defines arrival at Deansgrange Village
- Connects island..
- Extended areas of greening
- Opportunities for SUDS/nature-based solutions.
- Seating
- Playful offering
- Bicycle parking



Relocate bicycle parking to allow for a pedestrian area:

- Defines arrival at Deansgrange Village
- Public seating
- Enhanced greening
- Takes advantage of aspect

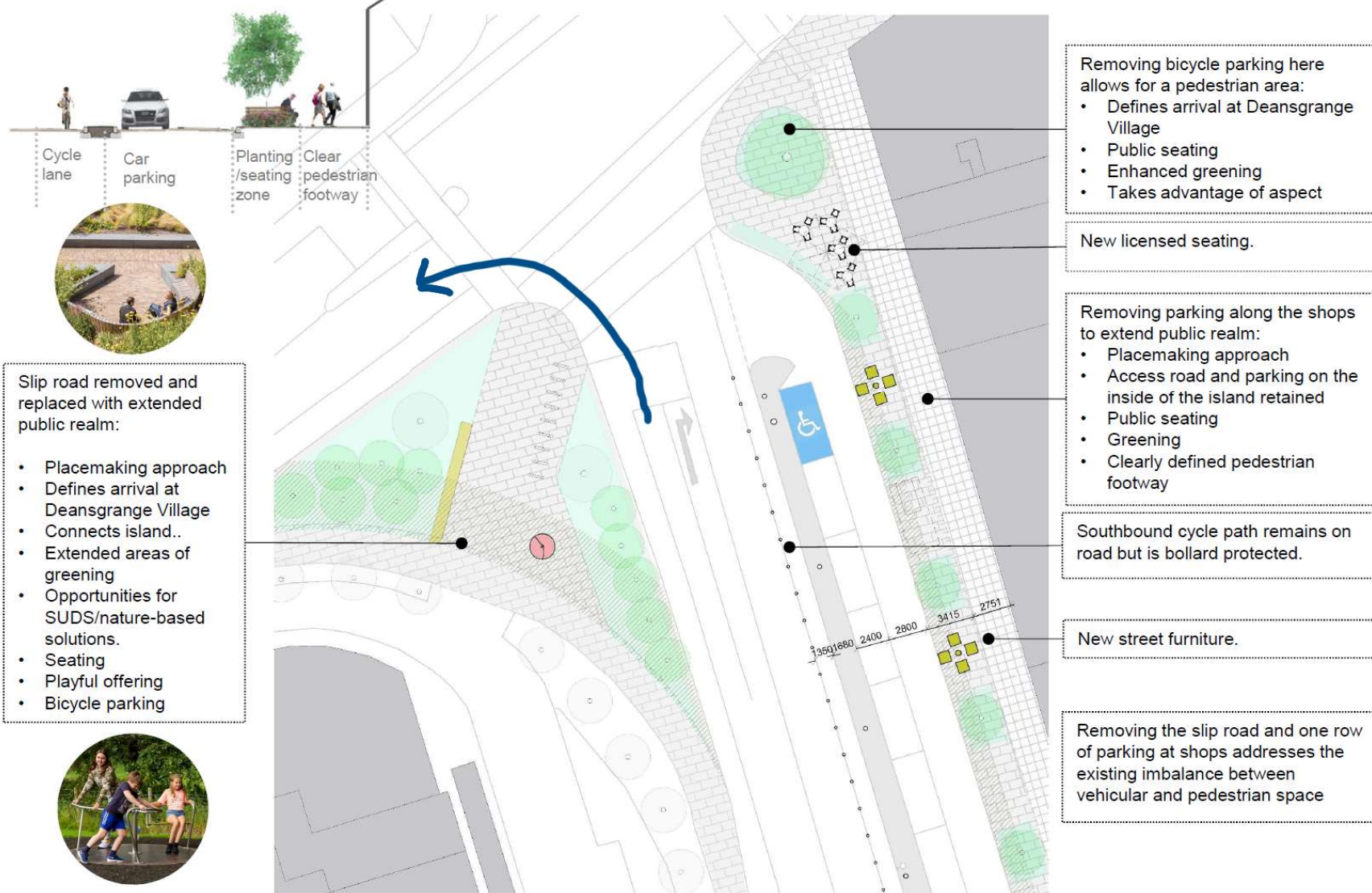
Removing parking along the shops to extend public realm:

- Placemaking approach
- Access road and parking on the inside of the island retained
- Public seating
- Greening
- Clearly defined pedestrian footway

Southbound cycle path remains on road but is bollard protected.

Removing the slip road and one row of parking at shops addresses the existing imbalance between vehicular and pedestrian space

OPTION 2: EXTEND PAVEMENT AND CREATE IMPROVED PUBLIC REALM SPACE PROPOSED PUBLIC REALM UPGRADE



Option 2

Extend public realm. Left
turn movement at
junction still permitted

Remove parking and
convert to public realm



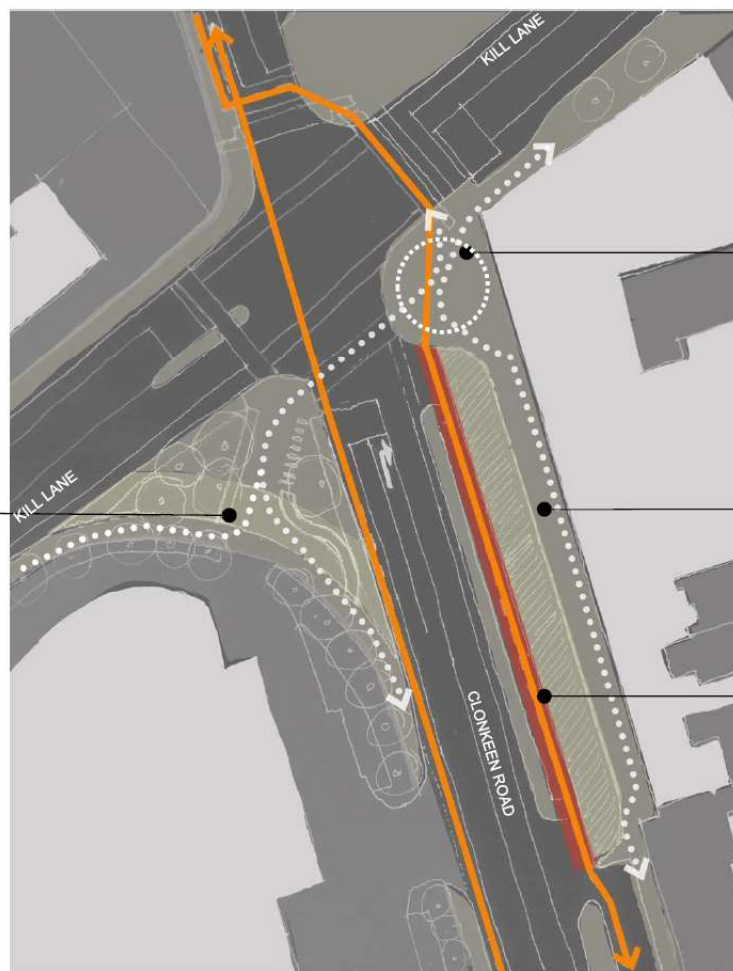
OPTION 3: MAXIMISE PEDESTRIAN SPACE WITH NEW CYCLE TRACK (PARKING REMOVED)

- Retain the right turn lane on Clonkeen Road.
- All parking in front of shops removed. NOTE: No accessible parking provision in this option.
- Left turn slip road from Clonkeen Road removed.



Slip road removed and replaced with extended public realm:

- Placemaking approach
- Defines arrival at Deansgrange Village
- Connects island..
- Extended areas of greening
- Opportunities for SUDS/nature-based solutions.
- Seating
- Playful offering
- Bicycle parking



Removing bicycle parking here allows for a pedestrian area:

- Defines arrival at Deansgrange Village
- Public seating
- Enhanced greening
- Takes advantage of aspect

Removing parking along the shops to extend public realm:

- Placemaking approach
- Access road and parking on the inside of the island retained
- Public seating
- Greening
- Clearly defined pedestrian footway

New segregated one/two-way cycle track provided.

Removal of all parking on Clonkeen Road greatly enhances opportunity for making the village a destination space:

- Pedestrian priority
- Improved provision for cyclists

OPTION 3: MAXIMISE PEDESTRIAN SPACE WITH NEW CYCLE TRACK (PARKING REMOVED)

PROPOSED PUBLIC REALM UPGRADE



Slip road removed and replaced with extended public realm:

- Placemaking approach
- Defines arrival at Deansgrange Village
- Connects island..
- Extended areas of greening
- Opportunities for SUDS/nature-based solutions.
- Seating
- Playful offering
- Bicycle parking



Removing bicycle parking here allows for a pedestrian area:

- Defines arrival at Deansgrange Village
- Public seating
- Enhanced greening
- Takes advantage of aspect

New licensed seating.

Removing parking along the shops to extend public realm:

- Placemaking approach
- Access road and parking on the inside of the island retained
- Public seating
- Greening
- Clearly defined pedestrian footway

New segregated one/two-way cycle track provided.

Removal of all parking on Clonkeen Road greatly enhances opportunity for making the village a destination space:

- Pedestrian priority
- Improved provision for cyclists

New street furniture.

Option 3



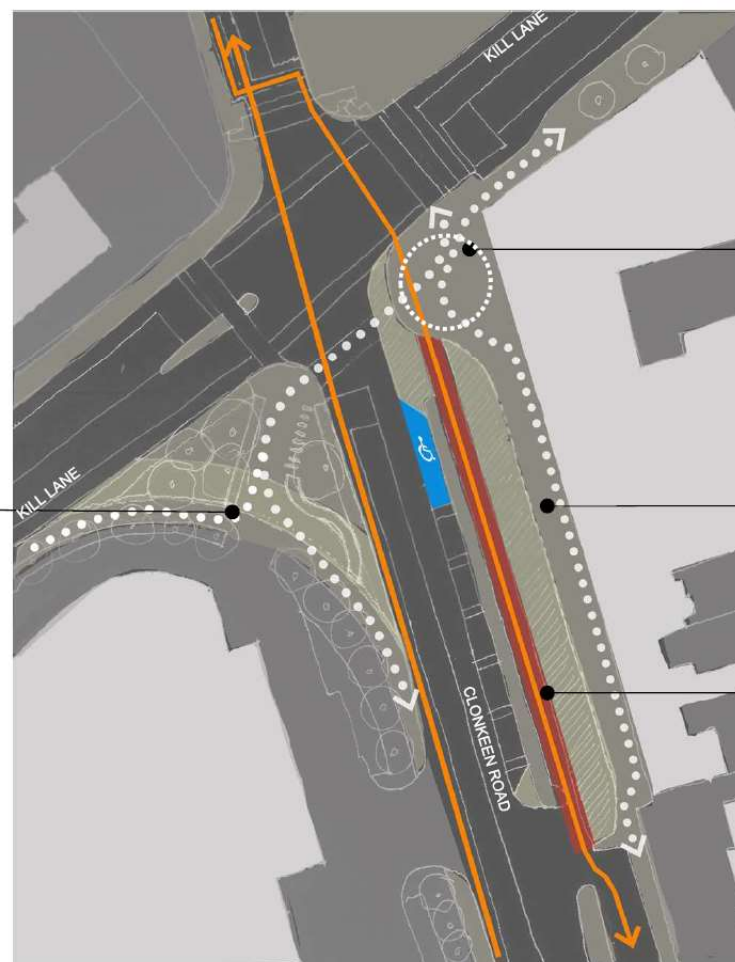
OPTION 4: MAXIMISE PEDESTRIAN SPACE WITH NEW CYCLE TRACK (RIGHT TURN REMOVED)

- Remove the right turn lane on Clonkeen Road.
- Provide parking outside of existing island.
- Left turn slip road from Clonkeen Road removed.



Slip road removed and replaced with extended public realm:

- Placemaking approach
- Defines arrival at Deansgrange Village
- Connects island..
- Extended areas of greening
- Opportunities for SUDS/nature-based solutions.
- Seating
- Playful offering
- Bicycle parking



Removing bicycle parking here allows for a pedestrian area:

- Defines arrival at Deansgrange Village
- Public seating
- Enhanced greening
- Takes advantage of aspect

Removing parking along the shops to extend public realm:

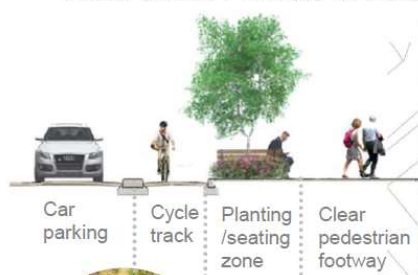
- Placemaking approach
- Access road and parking on the inside of the island retained
- Public seating
- Greening
- Clearly defined pedestrian footway

New segregated one/two-way cycle track provided.

Removal of all parking at shops greatly enhances opportunity for making the village a destination space:

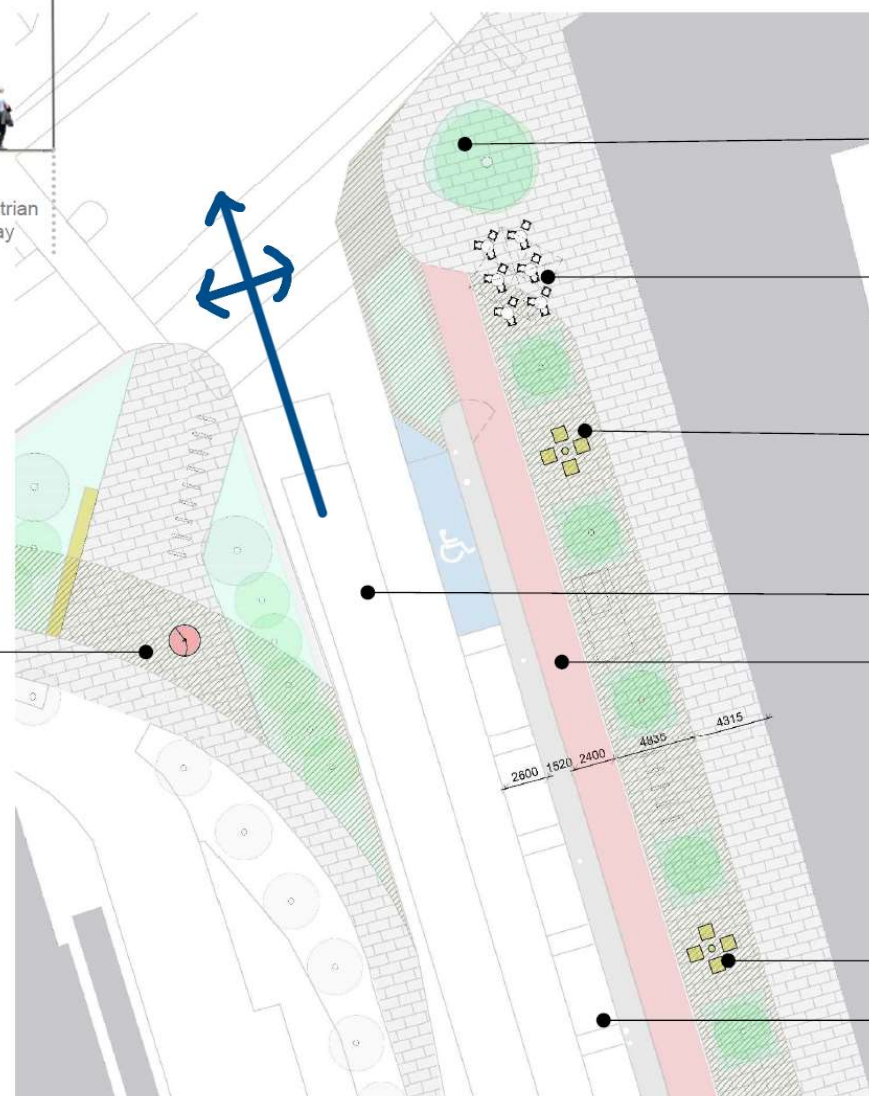
- Pedestrian priority
- Improved provision for cyclists

OPTION 4: MAXIMISE PEDESTRIAN SPACE WITH NEW CYCLE TRACK (RIGHT TURN REMOVED) PROPOSED PUBLIC REALM UPGRADE



Slip road removed and replaced with extended public realm:

- Placemaking approach
- Defines arrival at Deansgrange Village
- Connects island..
- Extended areas of greening
- Opportunities for SUDS/nature-based solutions.
- Seating
- Playful offering
- Bicycle parking



Removing bicycle parking here allows for a pedestrian area:

- Defines arrival at Deansgrange Village
- Public seating
- Enhanced greening
- Takes advantage of aspect

New licensed seating.

Removing parking along the shops to extend public realm:

- Placemaking approach
- Access road and parking on the inside of the island retained
- Public seating
- Greening
- Clearly defined pedestrian footway

Right turn lane removed.

New segregated one/two-way cycle track provided.

Removal of all parking at shops greatly enhances opportunity for making the village a destination space:

- Pedestrian priority
- Improved provision for cyclists

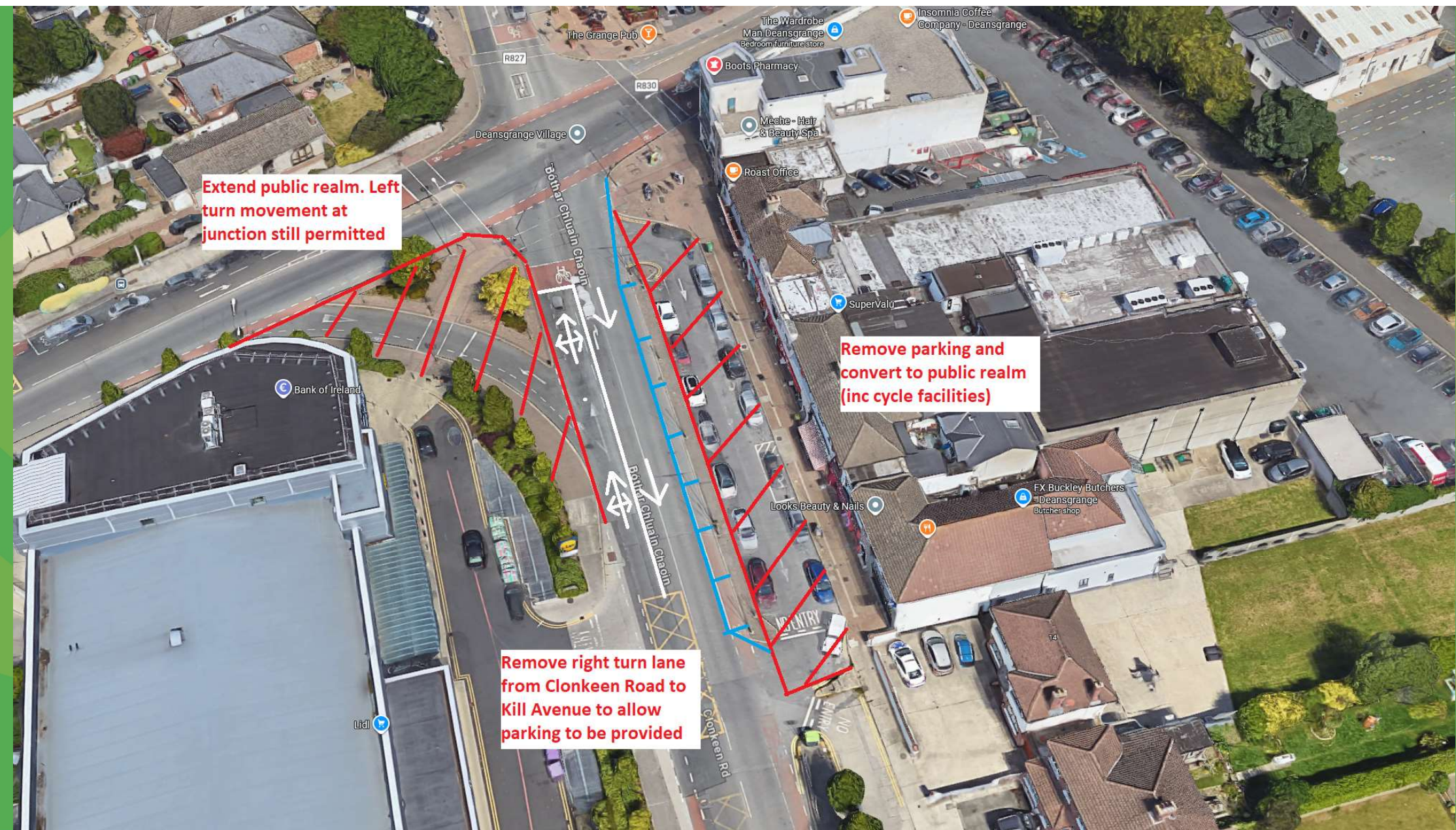
New street furniture.

New parking provided.

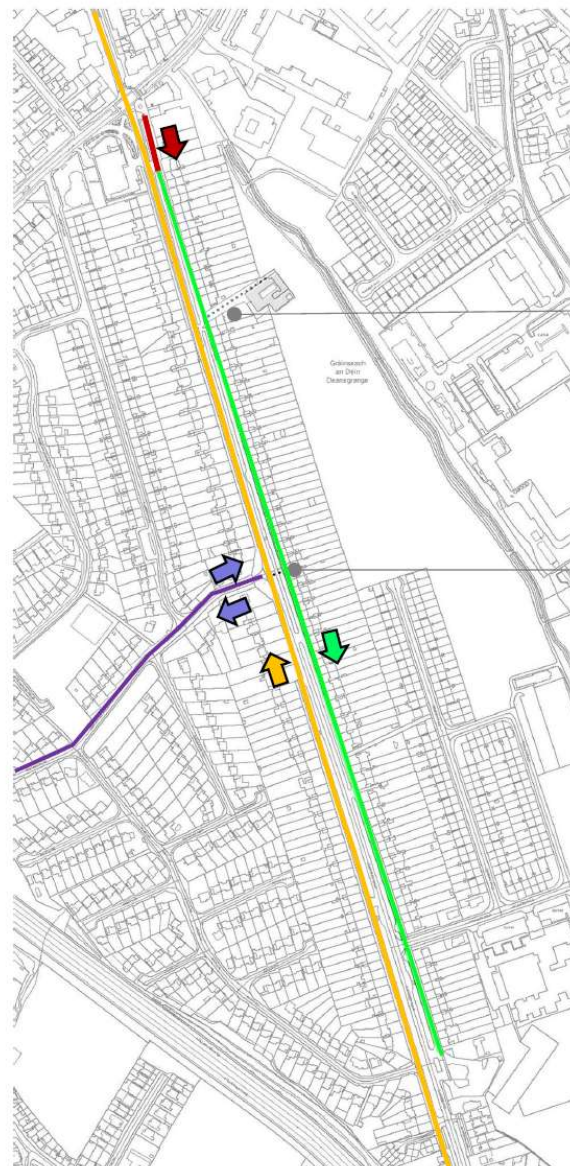
Extend public realm. Left turn movement at junction still permitted

Remove parking and convert to public realm (inc cycle facilities)

Remove right turn lane from Clonkeen Road to Kill Avenue to allow parking to be provided



IMPROVED ACTIVE TRAVEL OPPORTUNITIES



DRAFT – FOR DISCUSSION ONLY

- Proposed new cycle track
- Existing cycle lane (unprotected)
- Quiet street
- Existing feeder road
(two-way, mixed traffic)

Potential new cycle/pedestrian
access to Clonkeen Park at ESB
substation

New toucan/zebra crossing at
Beech Park Road

n Rd
Dublin
Street View
See more dates

Potential to develop the
parallel street to allow
for cycling



Next steps:

- **Period of public consultation**
- **Report back to the Elected Members in advance of proceeding with a scheme (if any)**
- **Application for funding to progress a scheme (if any)**