

- Notes
1. Do not scale from this drawing.
 2. All dimensions are metres U.N.O.
 3. All levels are in metres above Ordnance datum U.N.O.
 4. This drawing is to be read in conjunction with all relevant Engineers drawings and specifications.
 5. Exact position and location of all bollards and marking to be confirmed with the engineer on site prior to installation.

- Legend:
- Cycle track / Lane
 - Hatched protected space
 - Safety Bollard
 - Wayfinding for Sea to Mountains route
 - Wayfinding for Park to Park route
 - Wayfinding for Mountains to Metals

MOUNTAINS TO METALS ROUTE

CO	For Consultation	2020-09-28	RVGD LRT CMK
Rev	Description	Date	By Chk App

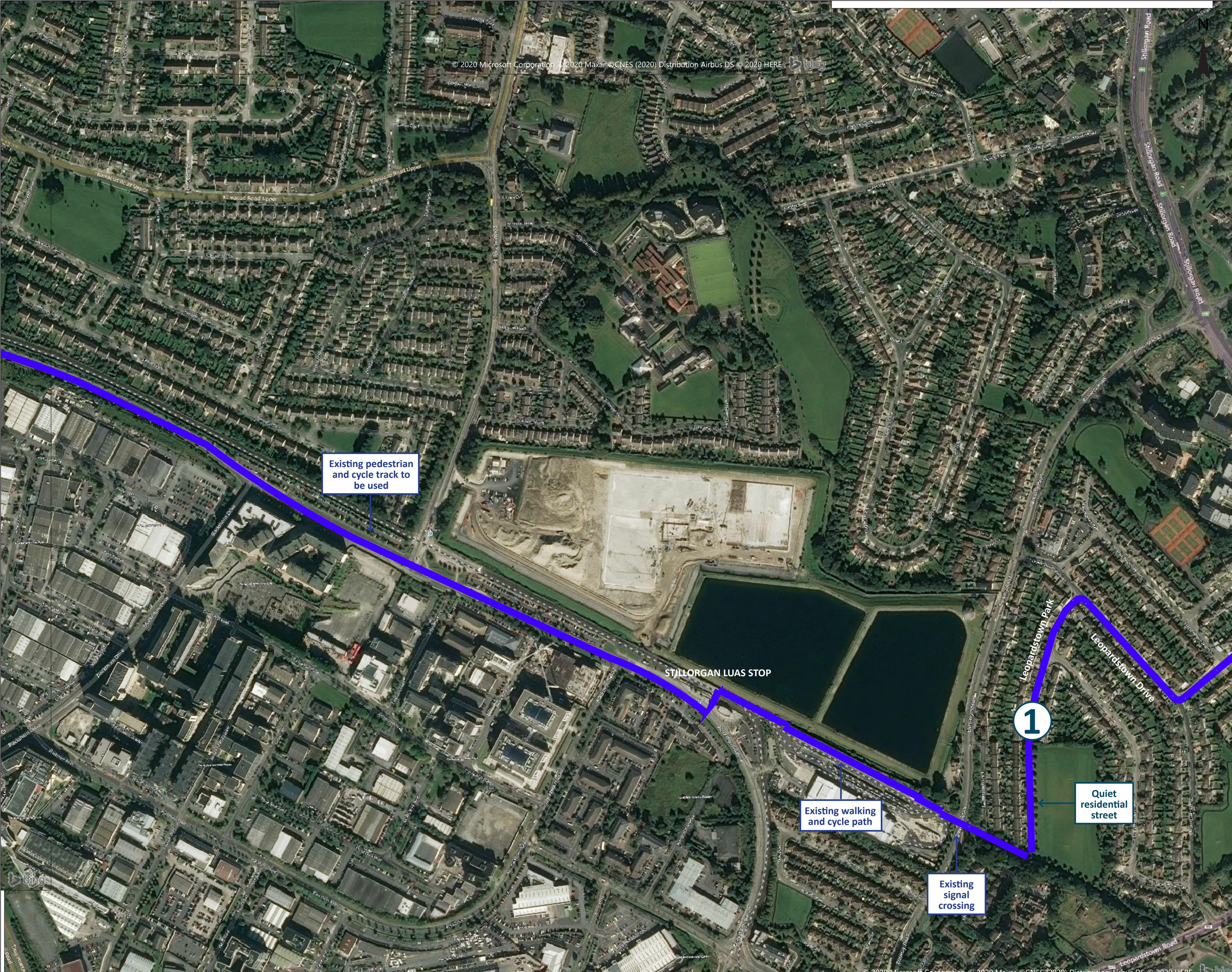
CONSULTATION

Dun Laoghaire & Rathdown
Active School Travel
Mountains to Metals

Ramboll
Hannemanns Alle 53
DK-2300 København S
Tlf. +45 51 51 10 00
Fax +45 51 51 10 01
www.ramboll.dk

General Arrangement
Sheet 1 of 5

Project No: 1620010428	Scale (@A1): 1:2500	Drawn: RS	Date: 2020-09-25
Drawing No: 1620010428-RAM-XX-XX-DR-C-309		Rev: C0	



© 2020 Microsoft Corporation © 2020 Maxar © CNES (2020) Distribution Airbus DS © 2020 HERE

- Notes
1. Do not scale from this drawing.
 2. All dimensions are metres U.N.O.
 3. All levels are in metres above Ordnance datum U.N.O.
 4. This drawing is to be read in conjunction with all relevant Engineers drawings and specifications.
 5. Exact position and location of all bollards and marking to be confirmed with the engineer on site prior to installation.

- Legend:
- Cycle track / Lane
 - Hatched protected space
 - Safety Bollard
 - Wayfinding for Sea to Mountains route
 - Wayfinding for Park to Park route
 - Wayfinding for Mountains to Metals

MOUNTAINS TO METALS ROUTE

① The route will start at the Kilmacud Luas stop, linking to the Sea to Mountains Route and the Sandyford Cycle Route.

The route will turn north to Leopardstown Park. It will follow this quiet residential street up to Leopardstown Avenue and continue on to Leopardstown Grove. Here there is an existing walking and cycling route to Rockwood. At the end of Rockwood the route will use the safe crossing across the N11.

CO	For Consultation	2020-09-28	RVGD LRT	CMK
Rev	Description	Date	By Chk	App

CONSULTATION

Dun Laoghaire & Rathdown
Active School Travel
Mountains to Metals

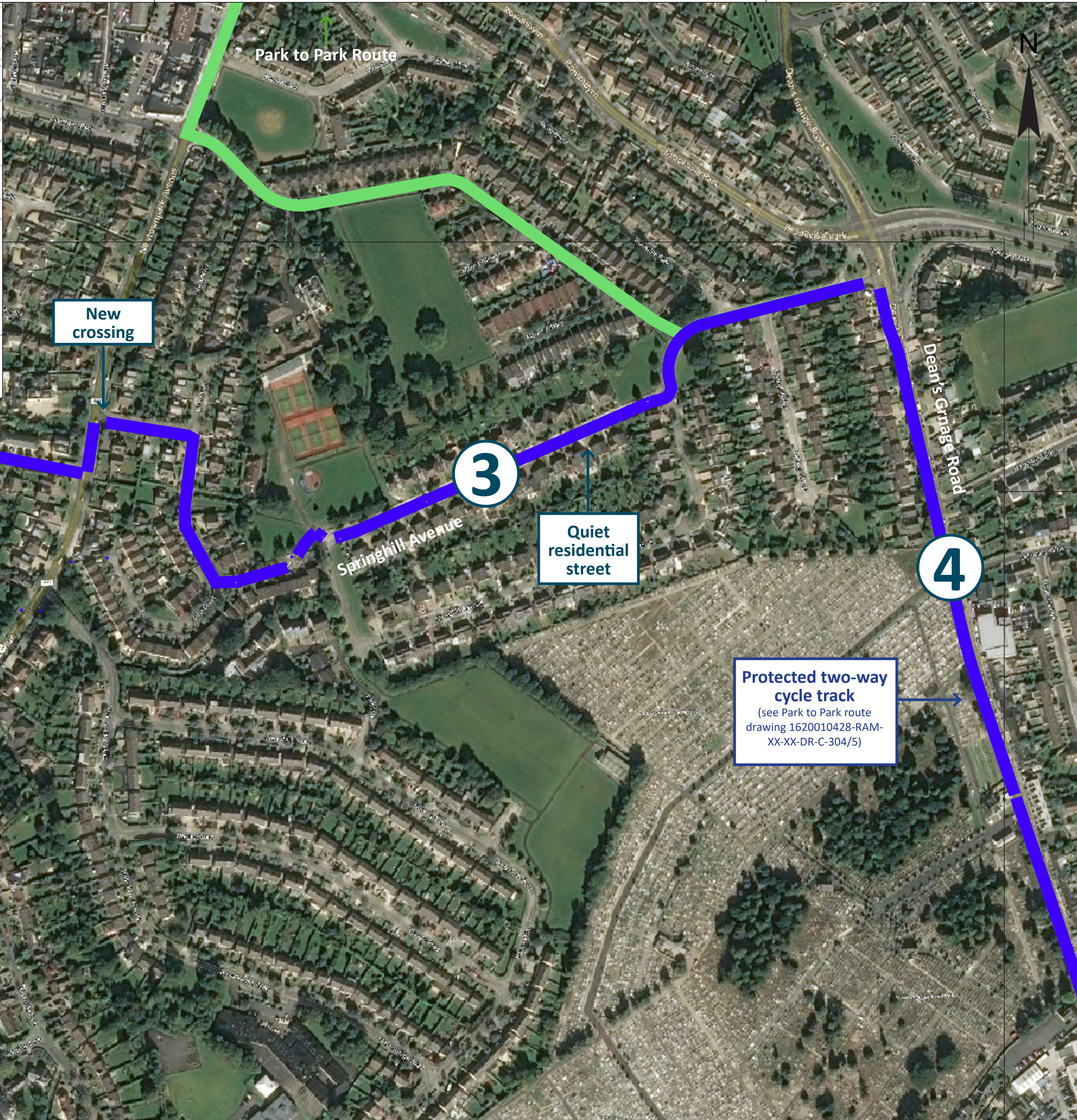
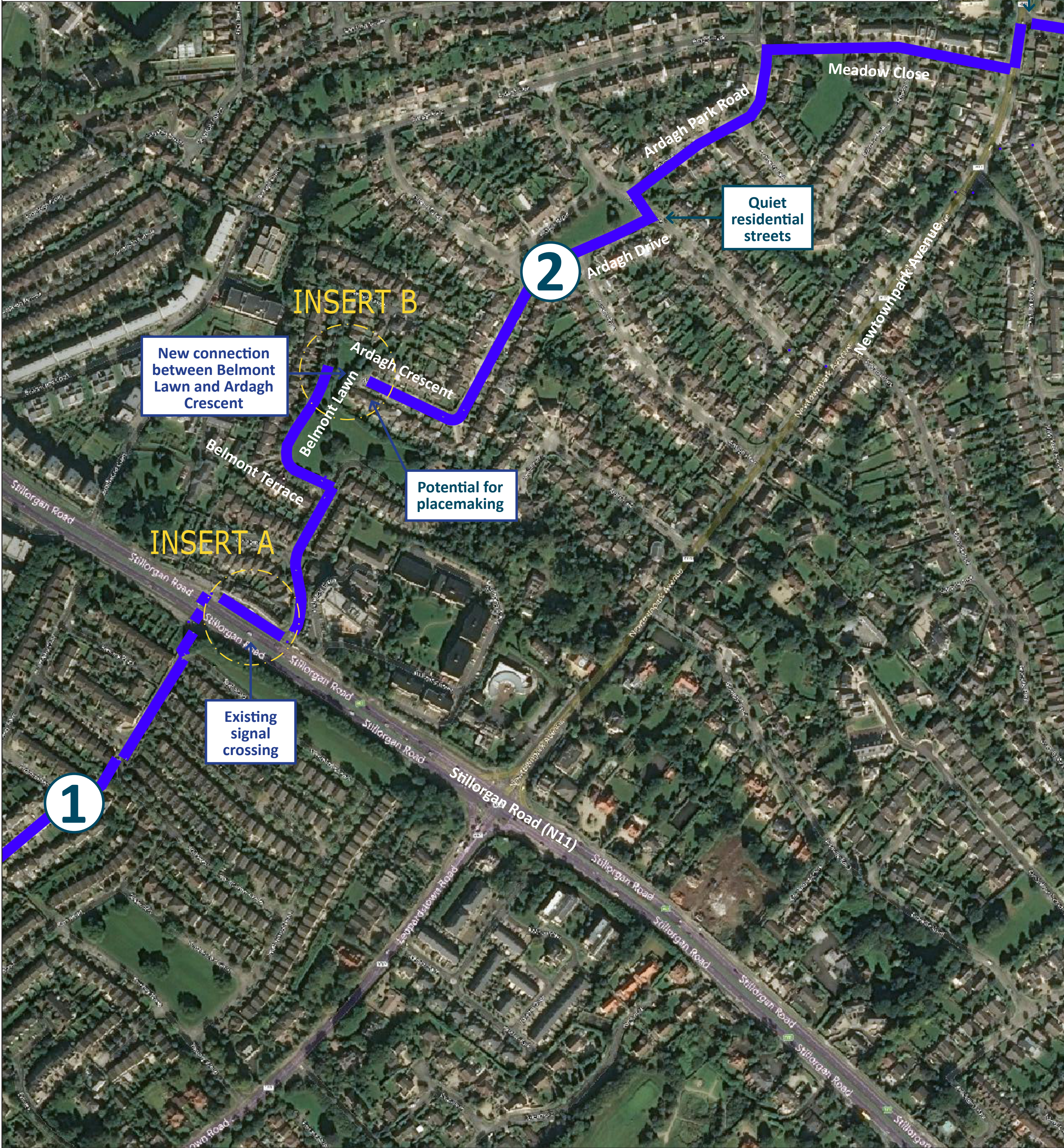
Hannemanns Alle 53
DK-2300 København S
Tel: +45 51 61 10 00
Fax: +45 51 61 10 01
www.ramboll.dk

General Arrangement
Sheet 2 of 5

Project No:	Scale (@A1):	Drawn:	Date:
1620010428	1:2500	RS	2020-09-25
Drawing No:			Rev:
1620010428-RX-XX-DR-C-310			C0



INSERT A: BELMOUNT TERRACE CYCLE LANE



INSERT B: BELMOUNT LAWN / ARDAGH CRESCENT

Notes

1. Do not scale from this drawing.
2. All dimensions are metres U.N.O.
3. All levels are in metres above Ordnance datum U.N.O.
4. This drawing is to be read in conjunction with all relevant Engineers drawings and specifications.
5. Exact position and location of all bollards and marking to be confirmed with the engineer on site prior to installation.

Legend:

- Cycle track / Lane
- Hatched protected space
- Safety Bollard
- Wayfinding for Sea to Mountains route
- Wayfinding for Park to Park route
- Wayfinding for Mountains to Metals

MOUNTAINS TO METALS ROUTE

① The route will start at the Kilmacud Luas stop, linking to the Sea to Mountains Route and the Sandyford Cycle Route.

The route will turn north to Leopardstown Park. It will follow this quiet residential street up to Leopardstown Avenue and continue on to Leopardstown Grove. Here there is an existing walking and cycling route to Rowood. At the end of Rowood the route will use the safe crossing across the N11.

② From this safe crossing the route will follow Belmont Terrace (alongside the N11) to Belmont Green. The route will follow this quiet residential street and cross Belmont Lawn where it will link into Ardagh Crescent. This link would require an opening in the wall in Ardagh Crescent.

From here the route will link to Newtownpark Avenue via Ardagh Drive, Park Road, Close then along the pathway to Meadow Close.

③ At Newtownpark Avenue a new safe crossing is proposed this would also improve access to the existing bus stop. From this crossing the route will continue on to Pine Lawn and Crescent which are quiet residential streets.

The route will follow the edge of Springhill Park and along Springhill Avenue. The route will continue along these quiet residential streets to Brookville Park where it will join the Park to Park Route.

CO	For Consultation	2020-09-28	RVCD	CHK
Rev	Description	Date	By	App
			Chk	

CONSULTATION

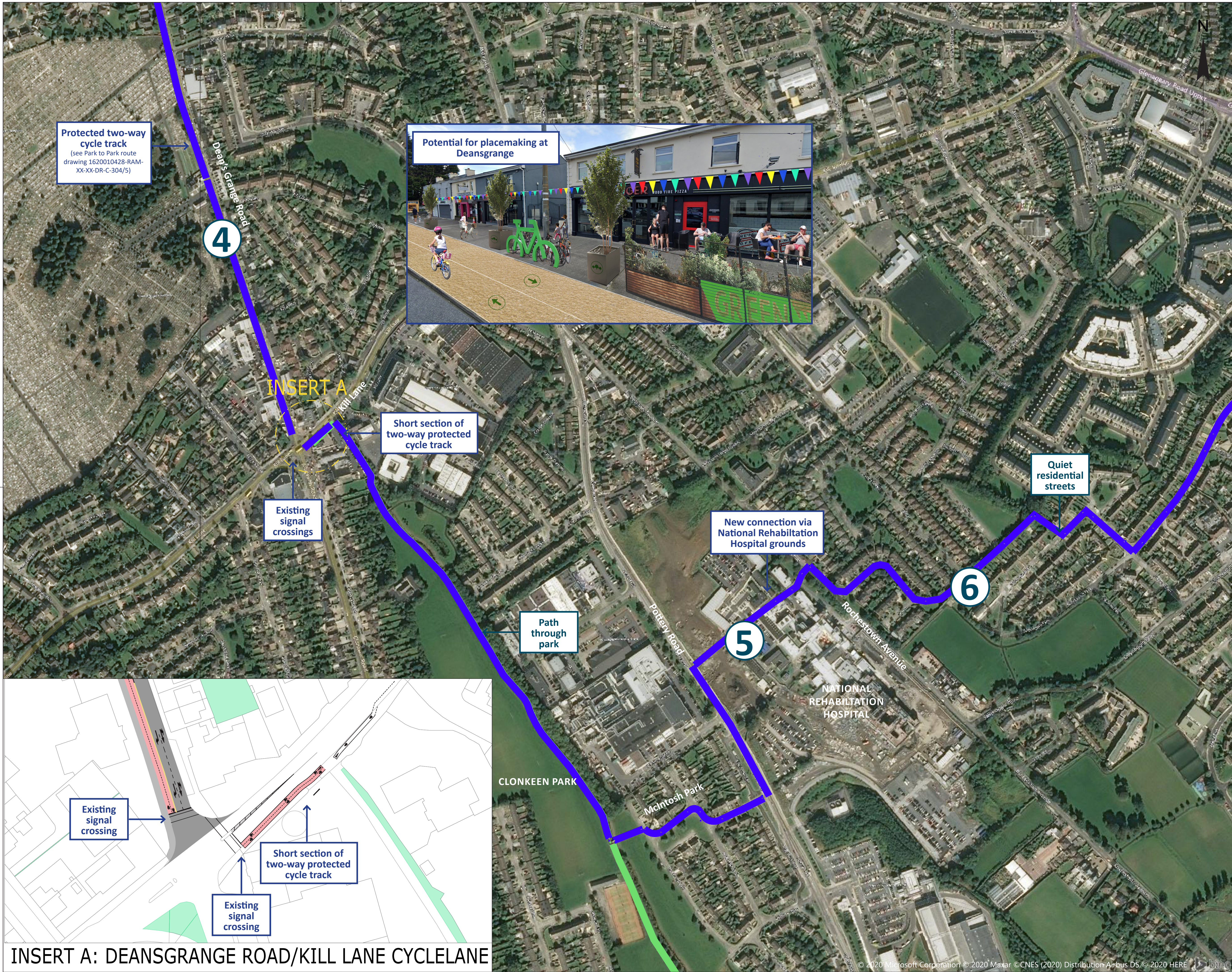
Dun Laoghaire & Rathdown
Active School Travel
Mountains to Metals

RAMBOLL

Hannemanns Alle 53
DK-2300 København S
Tel: +45 51 61 10 00
Fax: +45 51 61 10 01
www.ramboll.dk

General Arrangement
Sheet 3 of 5

Project No:	Scale (@A1):	Drawn:	Date:
1620010428	1:2500	RS	2020-09-25
Drawing No:			Rev:
1620010428-RAM-XX-XX-DR-C-311			C0



- Notes
1. Do not scale from this drawing.
 2. All dimensions are metres U.N.O.
 3. All levels are in metres above Ordnance datum U.N.O.
 4. This drawing is to be read in conjunction with all relevant Engineers drawings and specifications.
 5. Exact position and location of all bollards and marking to be confirmed with the engineer on site prior to installation.

- Legend:
- Cycle track / Lane
 - Hatched protected space
 - Safety Bollard
 - Wayfinding for Sea to Mountains route
 - Wayfinding for Park to Park route
 - Wayfinding for Mountains to Metals

MOUNTAINS TO METALS ROUTE

④ Both routes will run on to Dean's Grange Road. It will continue south into Clonkeen Park using the same proposed cycling and walking infrastructure, please see Park to Park Route for details.

⑤ The route will separate and leave the Park to Park Route at McIntosh Park. It will continue to Pottery Road. The route will use the existing cycle track and then link through the National Rehabilitation Hospital.

At the other side of the hospital grounds on Rochestown Avenue a protected two way cycle track is proposed to Sefton.

⑥ The route will run along Sefton to the pedestrian and cycle track which links to Sallynoggin Park. The route will continue along Sallynoggin Park to O'Rourke Park.

CO	For Consultation	2020-09-28	RVCD	CMK	
Rev	Description	Date	By	App	
			Chk		

CONSULTATION

Dun Laoghaire & Rathdown
Active School Travel
Mountains to Metals

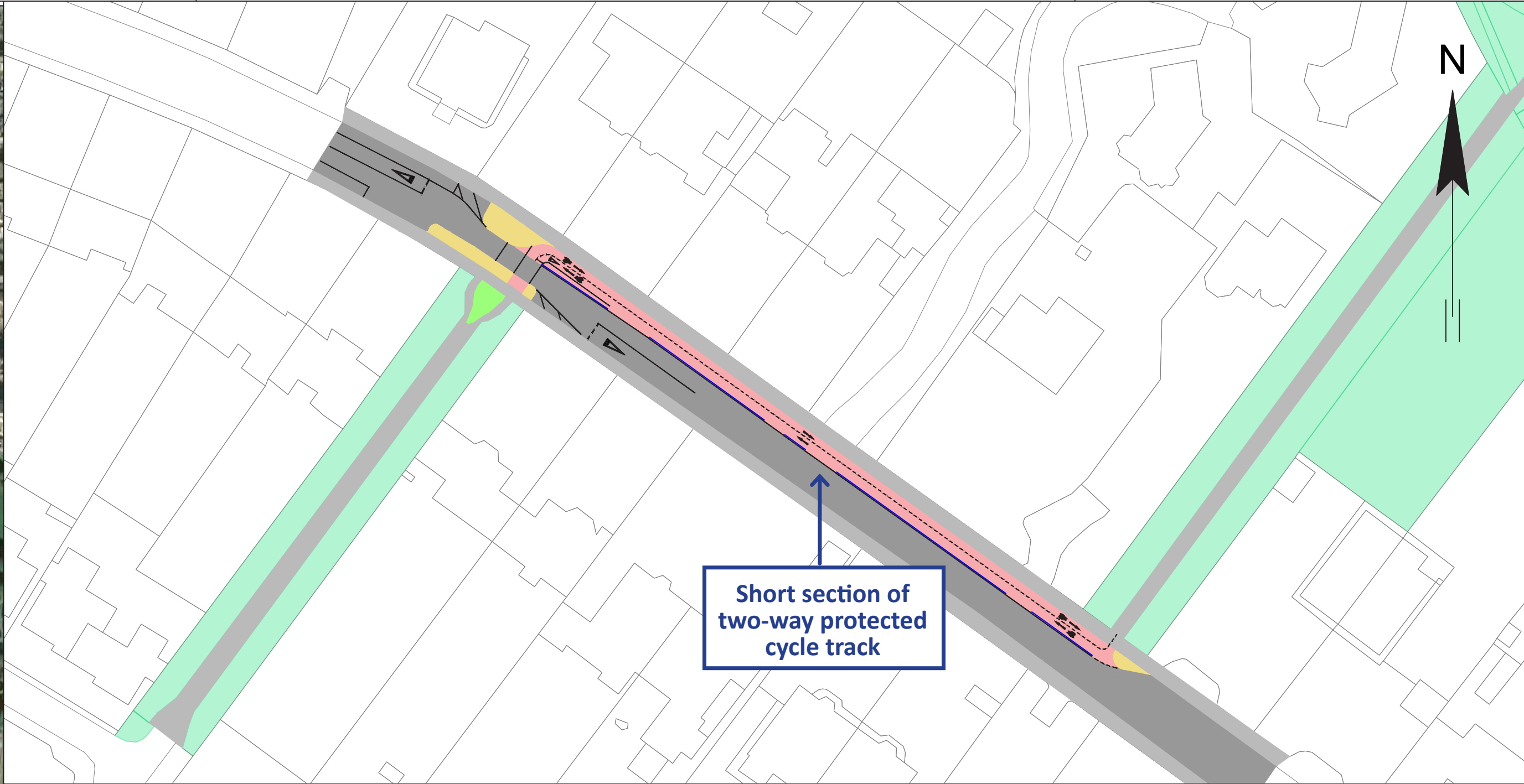
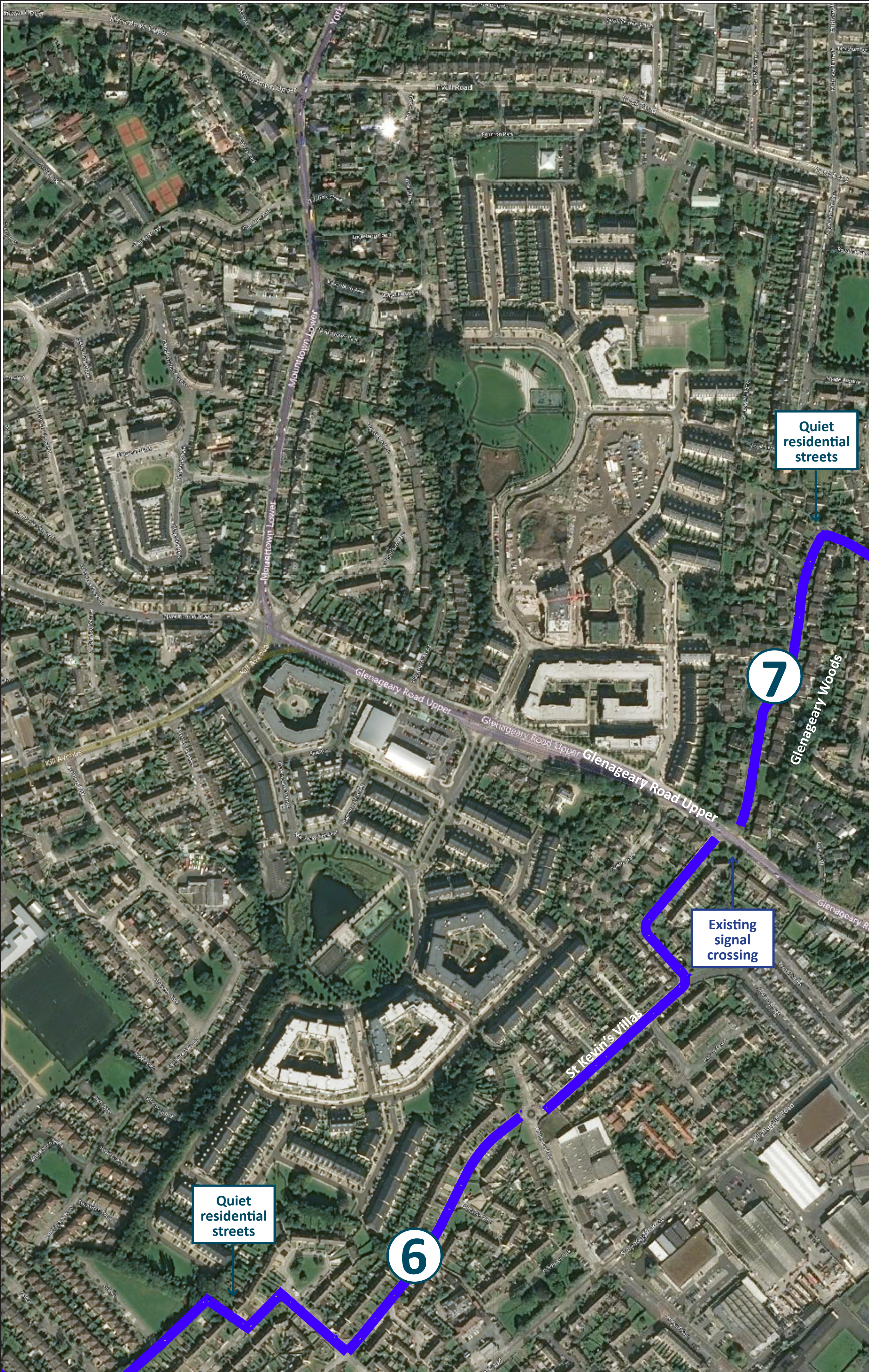
RAMBOLL

Hannemanns Allé 53
DK-2300 København S
Tlf: +45 51 61 10 00
Fax: +45 51 61 10 01
www.ramboll.dk

General Arrangement
Sheet 4 of 5

Project No:	Scale (@A1):	Drawn:	Date:
1620010428	1:2500	RS	2020-09-25
Drawing No:		Rev:	
1620010428-RAM-XX-XX-DR-C-312			C0

INSERT A: DEANSGRANGE ROAD/KILL LANE CYCLELANE



INSERT A: SILCHESTER ROAD CYCLELANE

- Notes
1. Do not scale from this drawing.
 2. All dimensions are metres U.N.O.
 3. All levels are in metres above Ordnance datum U.N.O.
 4. This drawing is to be read in conjunction with all relevant Engineers drawings and specifications.
 5. Exact position and location of all bollards and marking to be confirmed with the engineer on site prior to installation.

- Legend:
- Cycle track / Lane
 - Hatched protected space
 - Safety Bollard
 - Wayfinding for Sea to Mountains route
 - Wayfinding for Park to Park route
 - Wayfinding for Mountains to Metals

MOUNTAINS TO METALS ROUTE

- 6 The route will run along Sefton to the pedestrian and cycle track which links to Sallynoggin Park. The route will continue along Sallynoggin Park to O'Rourke Park.
- 7 From O'Rourke Park the route will run north along Rollins Villas and St Kevin's Villas where it comes to Glenageary Road Upper. Here the existing crossing will be used to cross to Glenageary Woods.
- 8 From Glenageary Woods the route will run north to Holmston Avenue. At the end of Holmston Avenue the route will cross Glenageary Road Lower using the existing crossing. From here it will continue onto Silchester Park and Crescent where there is an existing walking and cycling link to Silchester Road.
- On Silchester Road a short section of two way cycle track is proposed which will link to the Metals.

CO	For Consultation	2020-09-28	RVCD	CMK	
Rev	Description	Date	By	App	
			Chk		

CONSULTATION

Dun Laoghaire & Rathdown
Active School Travel
Mountains to Metals

RAMBOLL

Hannemanns Allé 53
DK-2300 København S
Tel: +45 51 61 10 00
Fax: +45 51 61 10 01
www.ramboll.dk

General Arrangement
Sheet 5 of 5

Project No:	Scale (@A1):	Drawn:	Date:
1620010428	1:2500	RS	2020-09-25
Drawing No:		Rev:	
1620010428-RAM-XX-XX-DR-C-313			

C0