

Dún Laoghaire Harbour Masterplan



Webinar outline

Background to the Masterplan

- What is a Masterplan?
- Context & Draft Objectives
- The Site

The Design Team

- About the team
- Previous work

Public Engagement

- Ways to make a submission
- Engagement activities





What is a Masterplan?

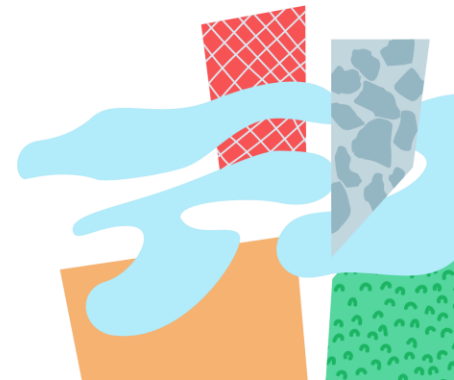


What is a Masterplan?

- The Dún Laoghaire Harbour Masterplan will be our directional chart for decades to come, **guiding how we want to use, develop and enjoy the Harbour, and its environs.**

A process that defines what is important about a place and how its character and quality can be protected and improved

A long-term, non-statutory planning **document** that sets out a **future Vision** for an area to guide decision-making around its growth and development.



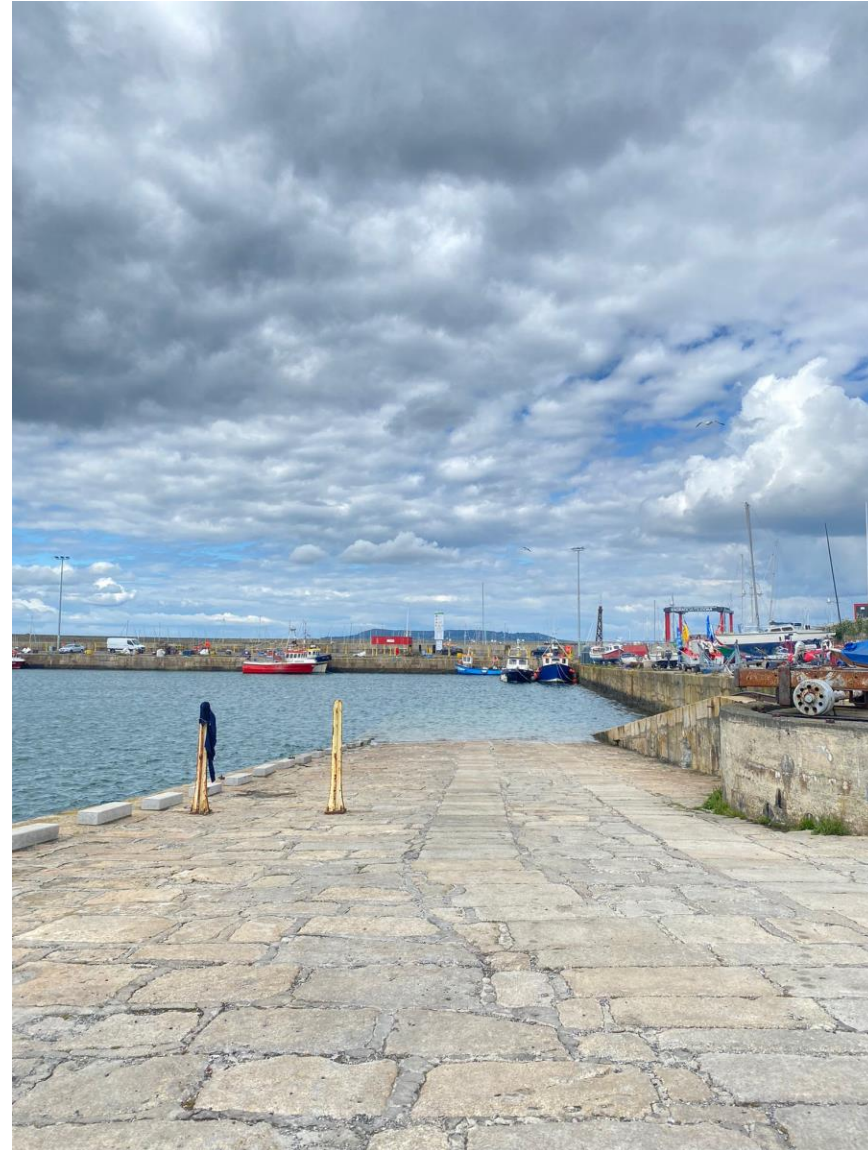
What is a Masterplan?

- The Masterplan will contain ideas for enhancing the **environment, heritage, economy, recreation, tourism and public spaces** within and around Dún Laoghaire Harbour and its waters.
- It will contain short, medium, and long-term actions for their achievement.



Why do we need one?

- Past Custodians: original Kingstown Harbour Commissioners, to the OPW, The Dept of Marine, and the former Dún Laoghaire Harbour Company.
- October 2018: Harbour Company was dissolved and the Harbour transferred into Dún Laoghaire County Council (DLRCC).
- DLRCC have now procured a Design Team to produce a Masterplan for Dún Laoghaire Harbour to guide its operations and development into the future.



The Team Involved

- **Dún Laoghaire-Rathdown County Council**
- **Fáilte Ireland**
- Arrow Architects – Lead Architects
- Sleth Architects – Urban Design
- M-CO – Communications & Consultation
- McCutcheon Halley (Planners)
- Carrig (Heritage)
- DBFL (Engineering / Transport /Water & Drainage)
- ERM (Ecology)

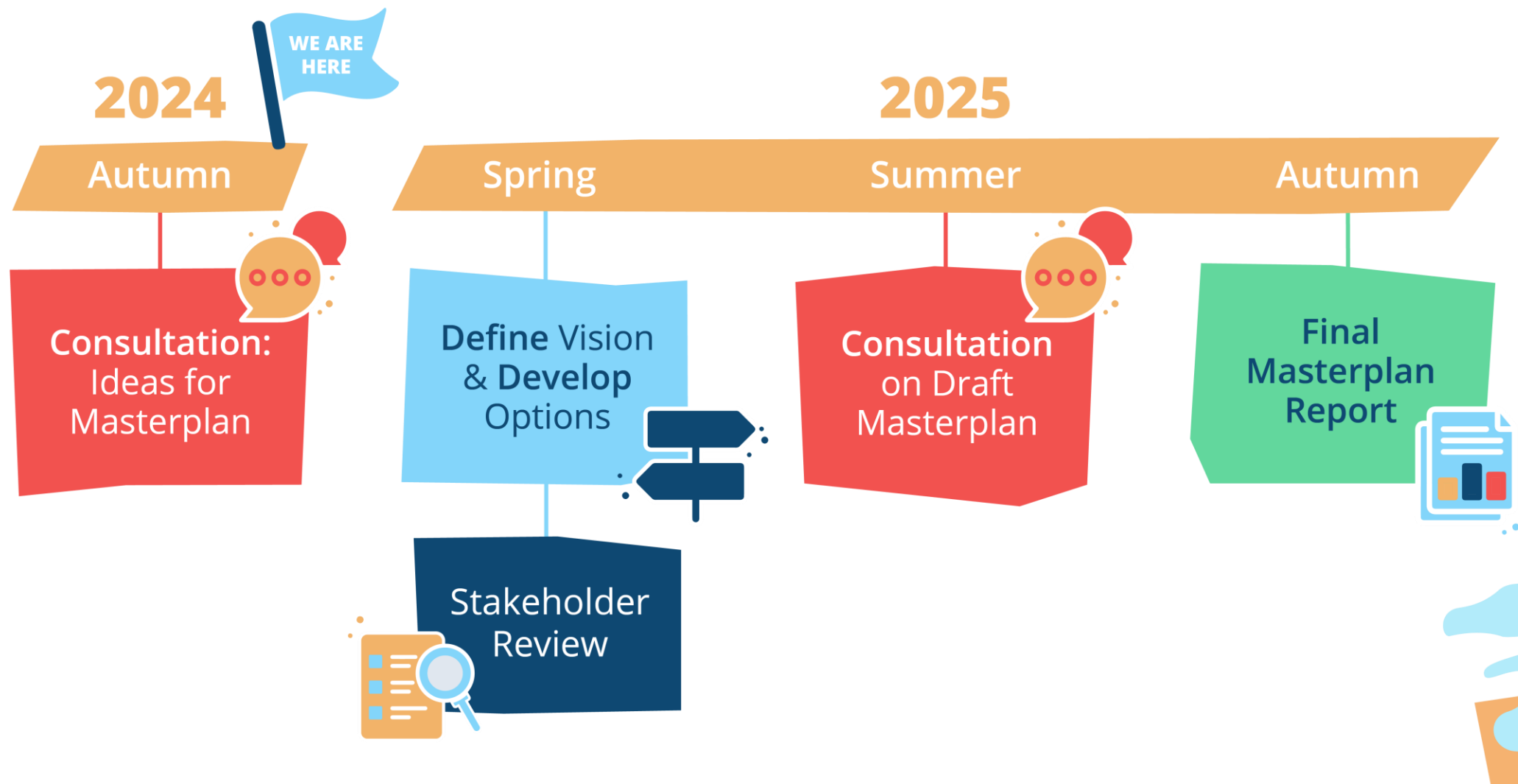


SLETH
Office for
architecture
and planning



Process of development

Launching 'Pre-Draft' Consultation 11 Sept – 23 Oct

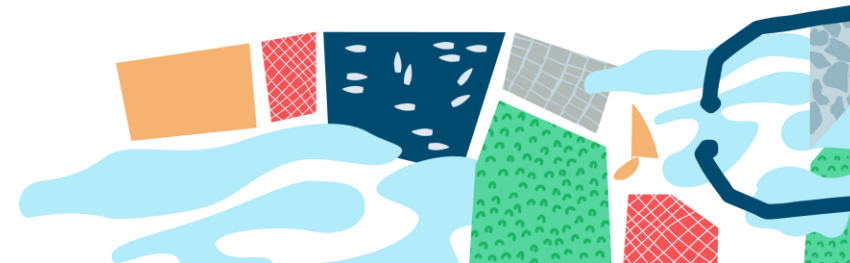


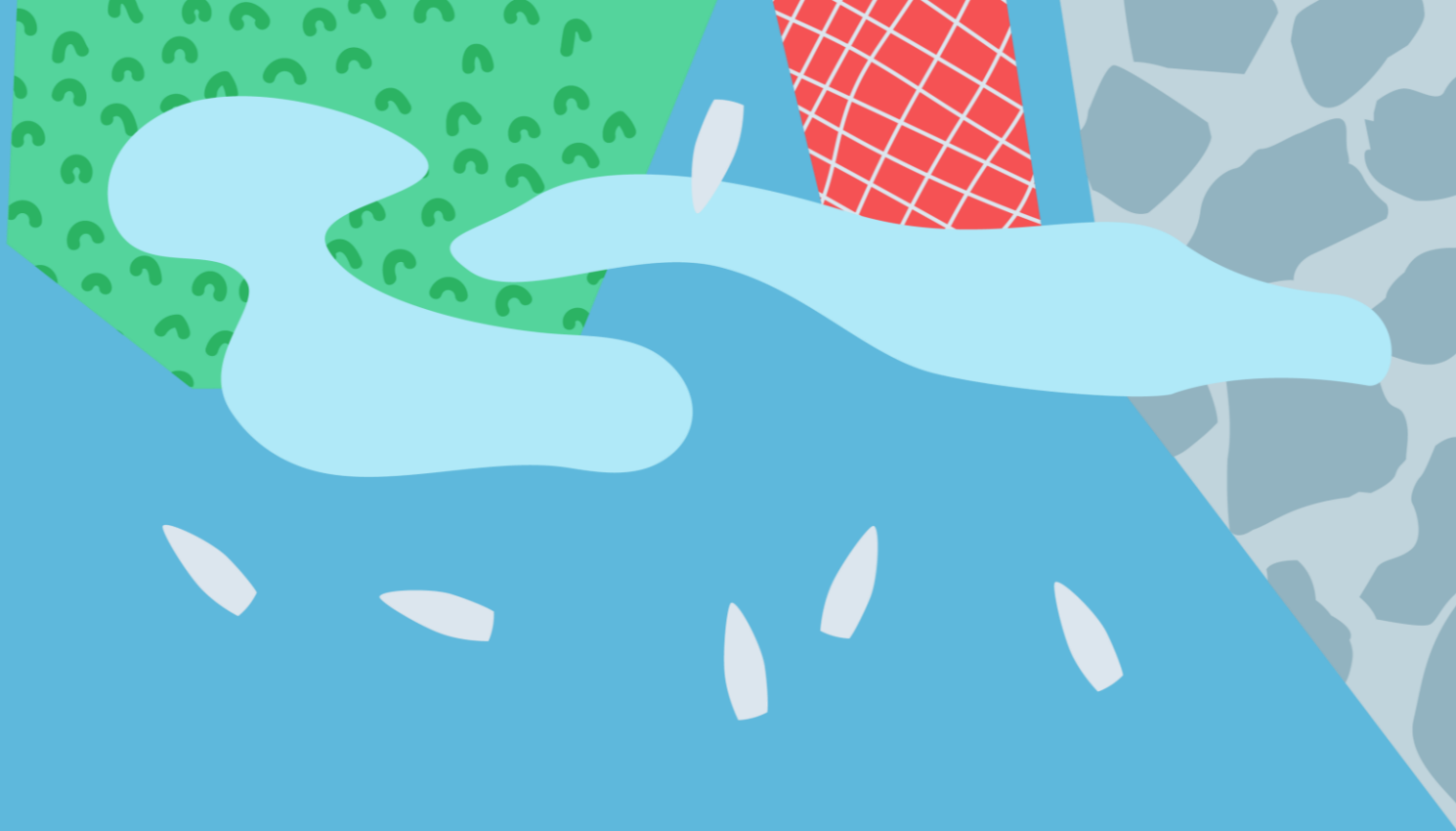
What will happen once the Masterplan is completed?

After the Masterplan is produced, the Council will work to secure funding, investment and partners to make these actions happen.

Detailed designs will be created for key parts of the Masterplan, and separate formal planning applications would be made where needed.

Masterplan will feed into the next County Development Plan.





The Context



National Planning Policy

- Project Ireland 2040 – National Planning Framework & National Development Plan
- Maritime Area Planning Act 2021
- National Ports Policy 2013

Local Dún Laoghaire Studies

- Indecon report on Economic Plan for Dún Laoghaire Harbour, 2021
- KPMG report on Dún Laoghaire Town Spatial and Economic Study, 2021
- Dún Laoghaire Harbour Masterplan 2011 (non-statutory plan)
- Dún Laoghaire Harbour Heritage Management Plan

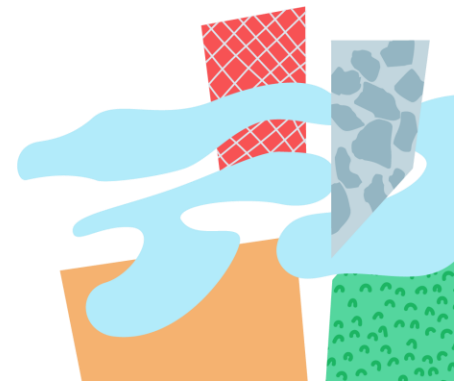
Regional Planning Policy

- Regional Spatial and Economic Strategy 2019-2031
 - County Development Plan 2022-2028
 - Interim Dún Laoghaire Urban Framework Plan (Appendix 17 of CDP)
- 



Other relevant plans and projects

- Cruise Ship Business
- NTA BusConnects project
- DLRCC Coastal Mobility Route
- National Watersports Campus (Harbour Wide)
- Watersports Providers Area (Inner Harbour)
- Quarterdeck Innovation Campus (Ferry Terminal)
- Dublin Array Windfarm O&M Base
- Green Parklet in the area between Royal Irish Yacht Club and Irish Lights
- Living Streets Dún Laoghaire
- Myrtle Square & Convent Lane Greening
- Dún Laoghaire Baths Project





NATIONAL WATERSPORT CAMPUS AIMS

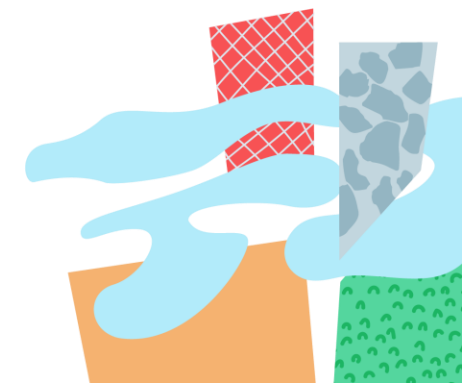
- Increase participation across a wide range of watersports with universal access for age, ability and gender.
- Become the home for watersports national governing bodies, the centre for marine leisure in Ireland and a world class event venue.
- Provide a permanent centre for high performance athletes to improve performance standards and widen the talent pool.
- Improve the health and well-being of the community through engagement in healthy sporting activities and their understanding of the marine environment and safety.



Large Scale Sports Infrastructure Grant, Department of Transport, Tourism and Sport, 2019

Dún Laoghaire Rathdown County Council, together with [Irish Sailing](#) and [Diving Ireland](#) and the [local watersports community](#), has been working on concept development.


Plan to appoint a design team by the end of this year.



About the Harbour

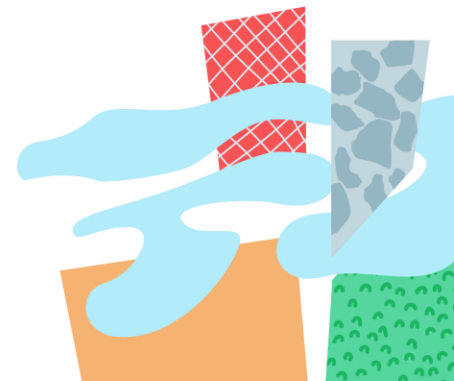
- Dún Laoghaire Harbour is almost 200 years old and is recognized as one of the finest man-made harbours in the British & Irish Isles
- The East and West Piers are the largest protected structures in Ireland
- The Harbour includes approximately 50 acres of land and 200 acres of water-space. It is intended to include consideration of the water-space in Dún Laoghaire Harbour within this Masterplan





Draft Objectives – based on existing policy priorities -expected to evolve as the project progresses

- **Inclusivity & accessibility:** Make the Harbour a more inclusive and accessible recreational amenity for the enjoyment of everyone.
- **Movement & connectivity:** Improve connections between and around the Harbour and Dún Laoghaire town through placemaking, design and integrated sustainable mobility.
- **Heritage & tourism:** Make the Harbour a world class destination offering new and enhanced attractions, rooted in its distinctive heritage and character.
- **Business & growth:** Support and promote existing mixed uses (maritime, recreational, fishing and commercial services) while fostering new economic, community and tourism opportunities.
- **Regeneration:** Rejuvenate and repurpose former ferry lands and other opportunity sites through appropriate, sustainable development for public, visitor and commercial needs.
- **Climate:** Build climate resilience through climate adaptation and mitigation measures and adoption of circular design principles.
- **Landscape & environment:** Maintain and enhance blue and green assets for biodiversity and healthier public spaces



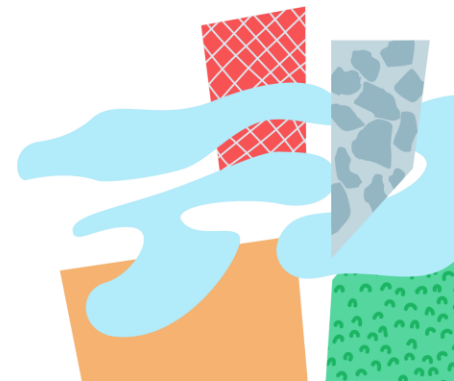
The Site





Key Opportunity Sites

- We want **to continue to support and enhance existing uses, whilst exploring new opportunities** in the Masterplan area.
- The Masterplan area comprises 50 acres of land and 200 acres of sea within the historic Harbour walls. While some of the land around Harbour has long-term tenants or is privately owned, **the Harbour does have significant opportunity sites.**
- These could be repurposed for different uses – recreation, heritage, tourism, accommodation or commercial.

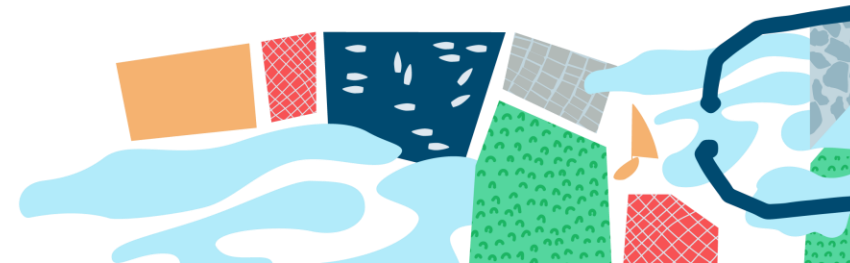


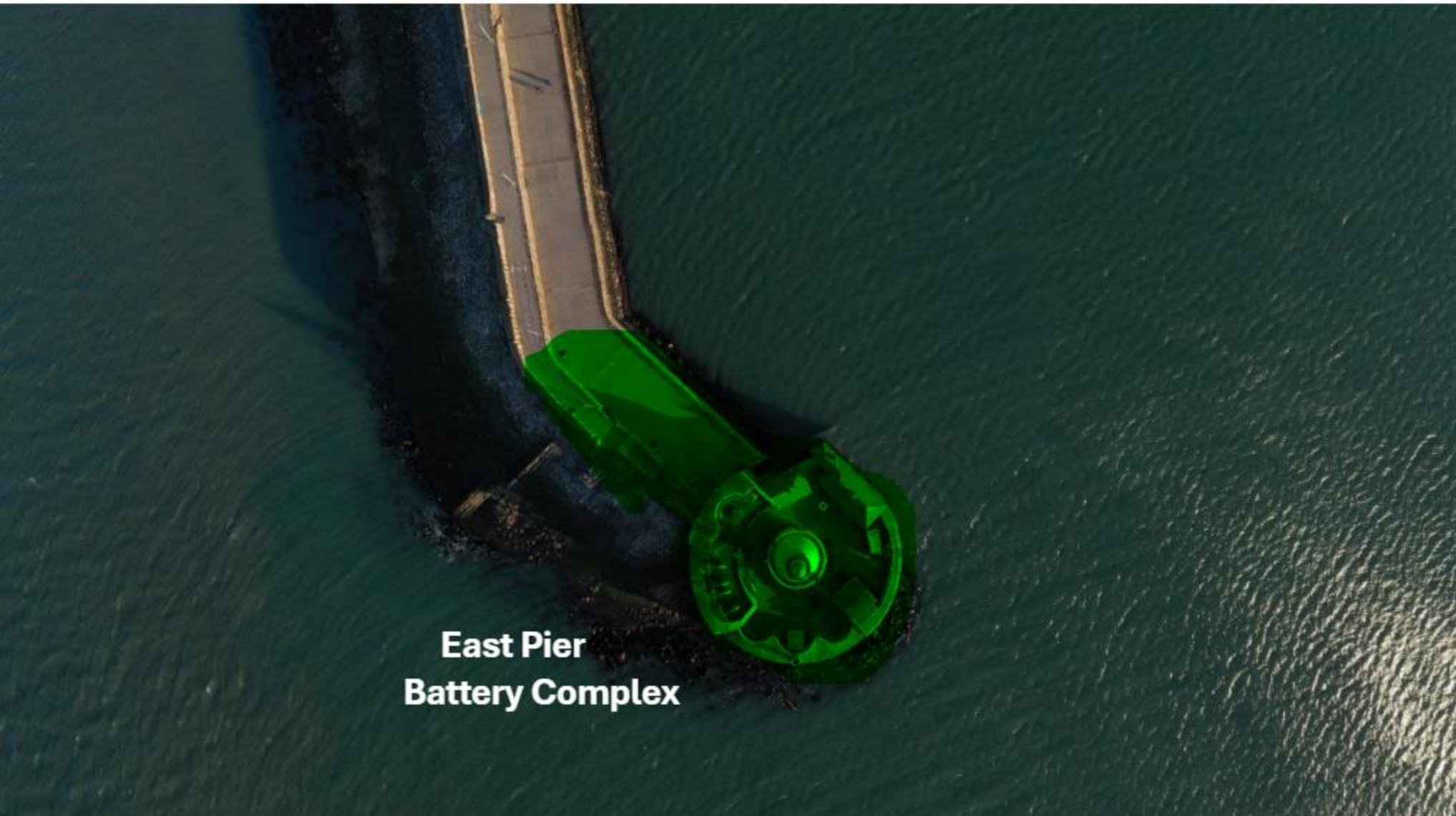
Consultation Map



Key Opportunity Areas

- East Pier Battery Complex
- Berth 1, East Pier
- Carlisle Pier generally, to include the Veranda/toilet block adjacent to Queens Road
- Berth 4 Ramp area (Behind Underground carpark)
- Ferry Terminal and Former Stena HSS compound
- Pedestrian / cycleway from Irish Lights to West Pier (under bridge)
- Coal Harbour Watersports' Area
- West Pier Training School area
- The Gut
- Water Space in the Harbour





**East Pier
Battery Complex**

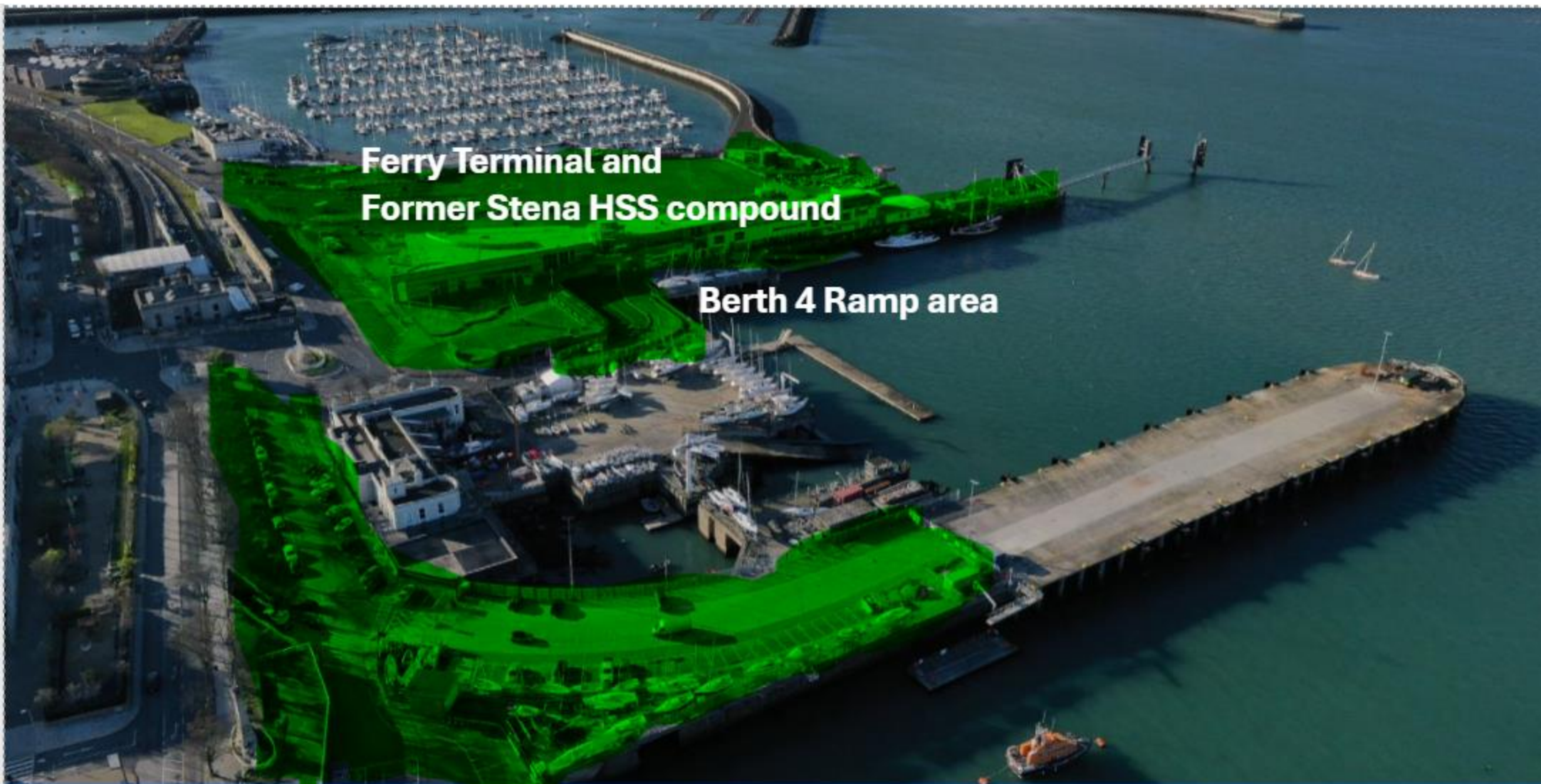




Carlisle Pier

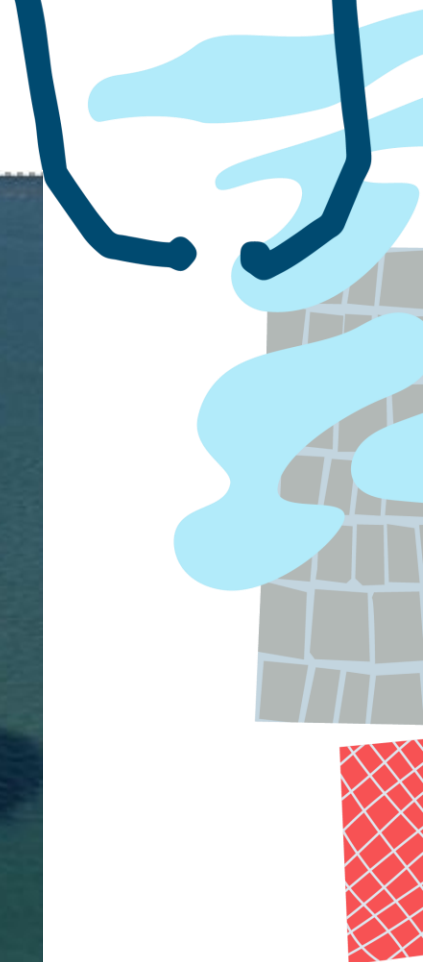
**Berth 1
East Pier**





**Ferry Terminal and
Former Stena HSS compound**

Berth 4 Ramp area





Pedestrian / cycleway from
Irish Lights to West Pier

Coal Harbour
Watersports' Area





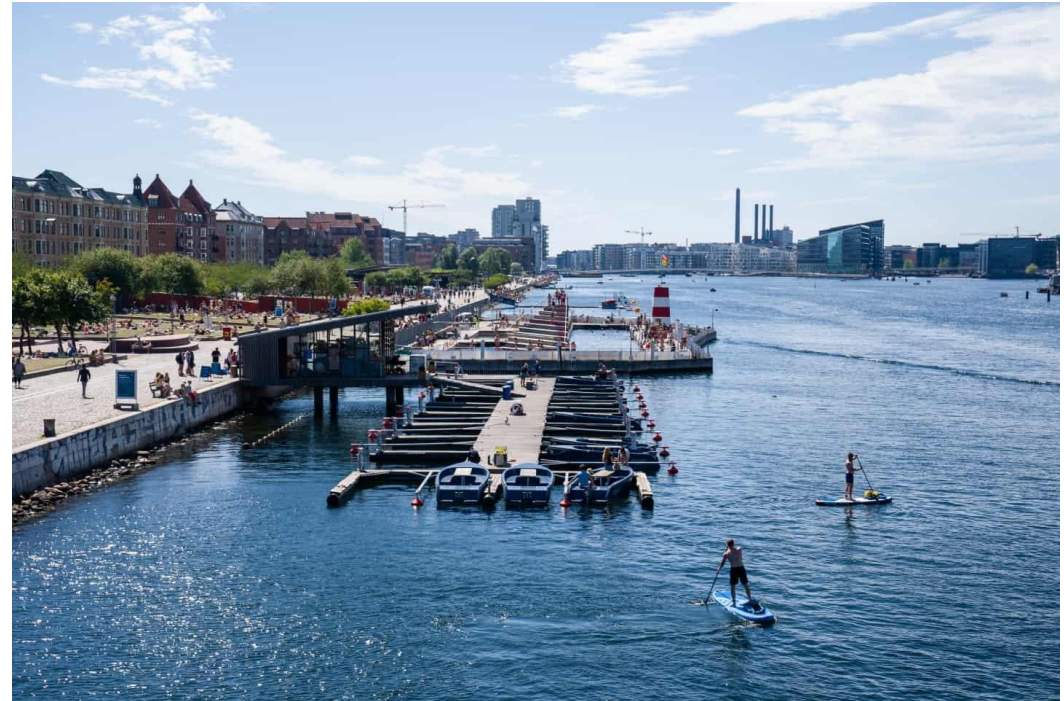
Water Space in the Harbour



Design Team



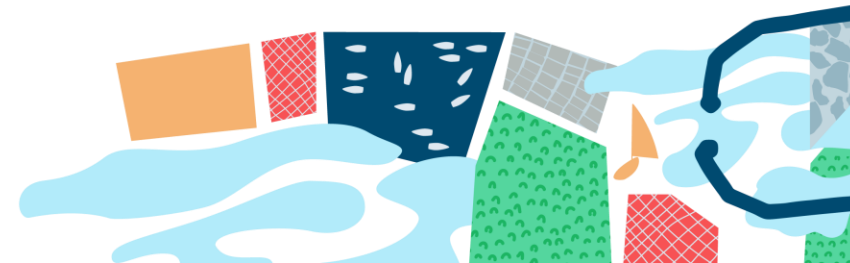
The team



Copenhagen



SLETH Office for
architecture
and planning



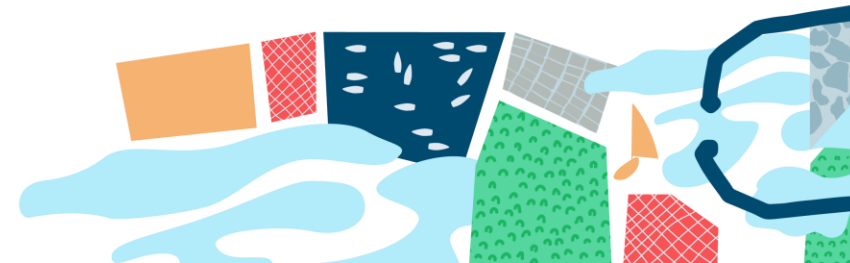
Previous work



Dublin Landings/Quayside Quarter, Dublin



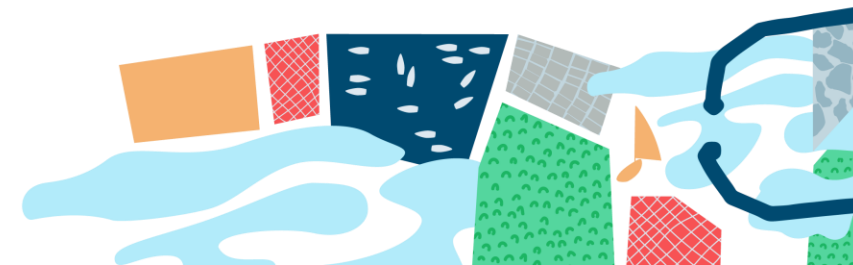
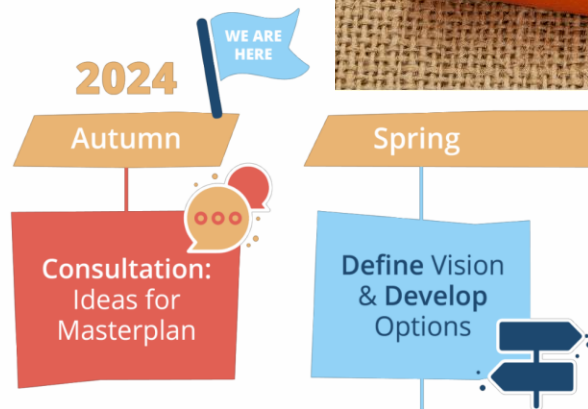
North Harbour, Copenhagen

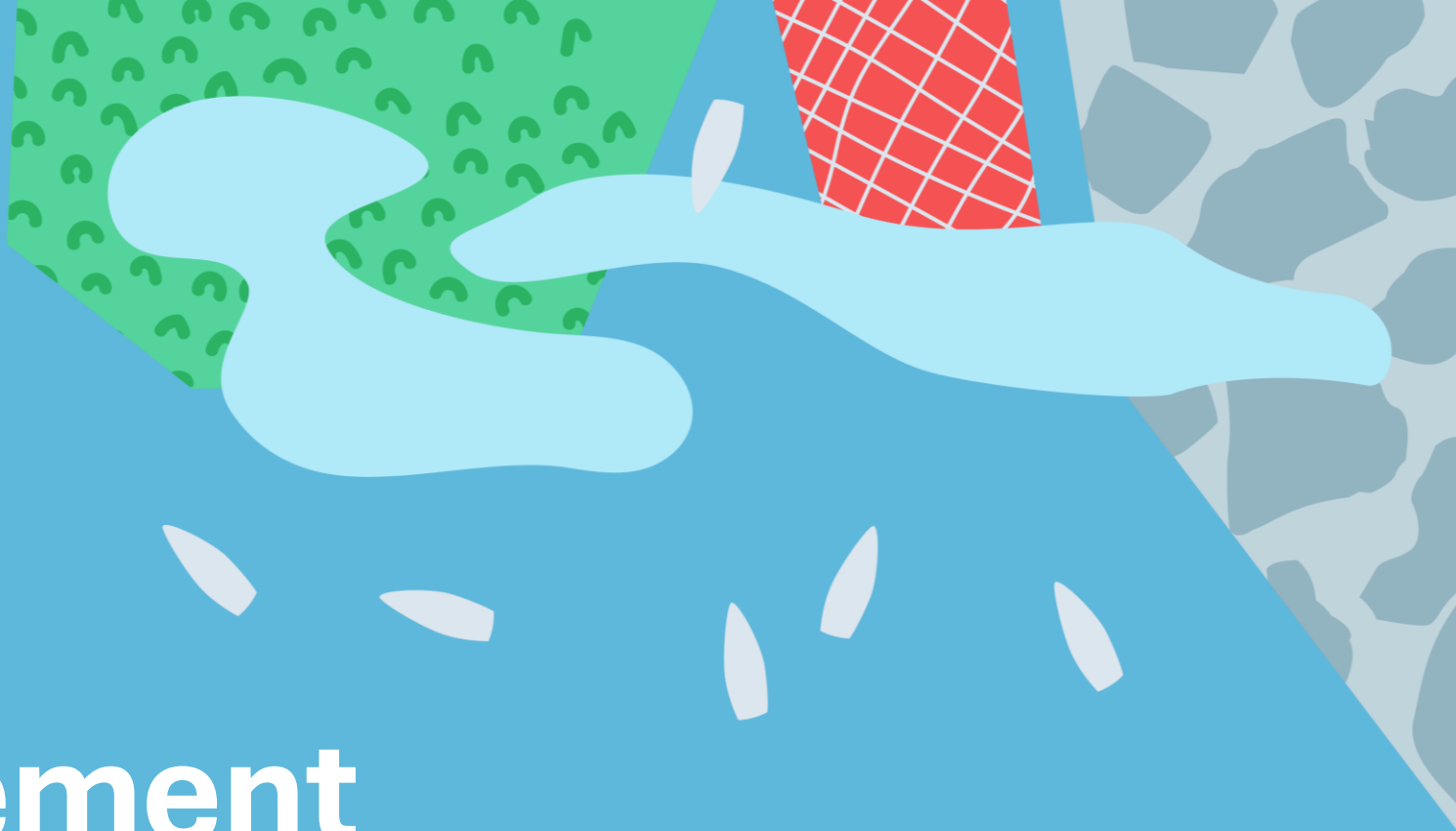


From Ideas to a Vision

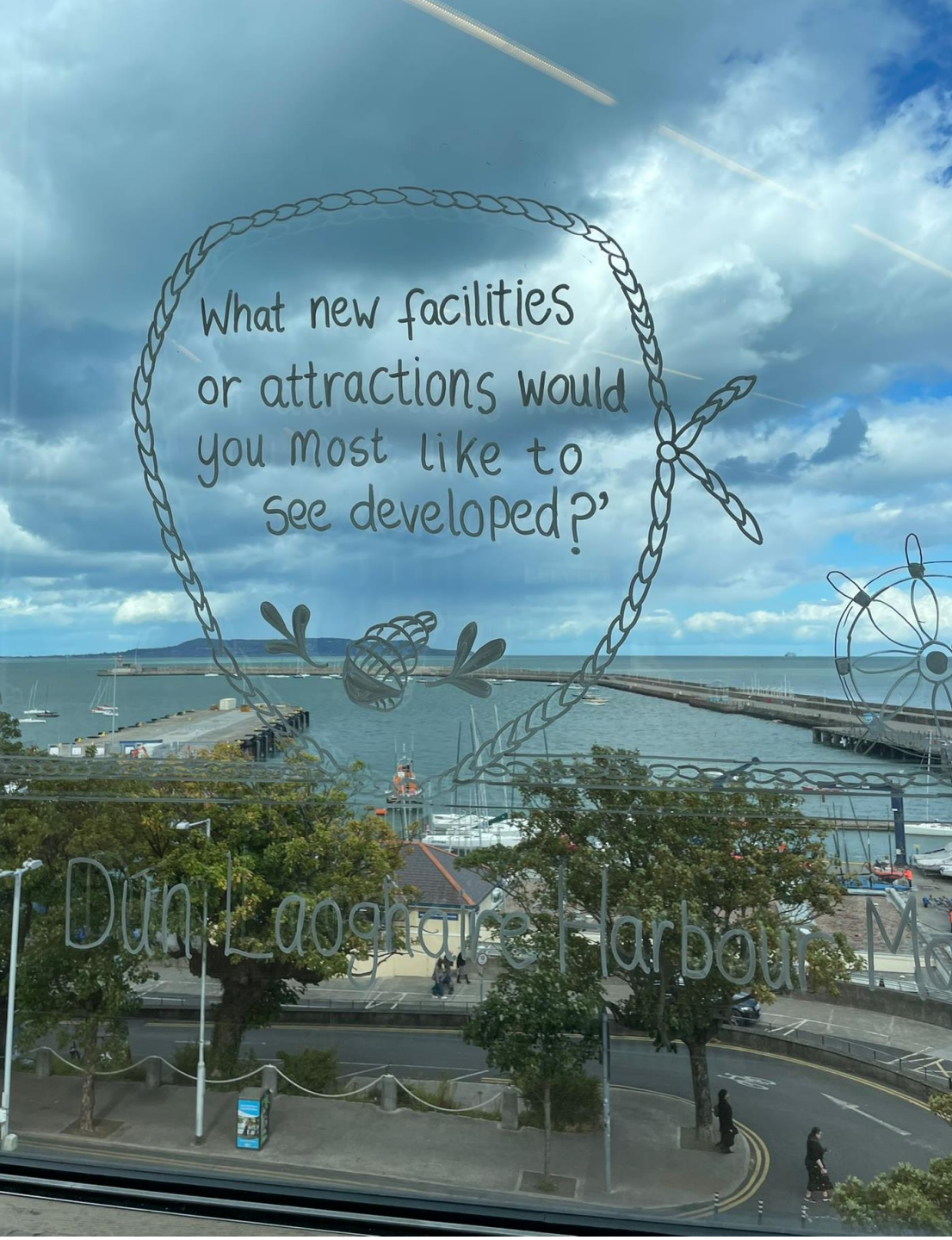


Design Team Process





Public Engagement

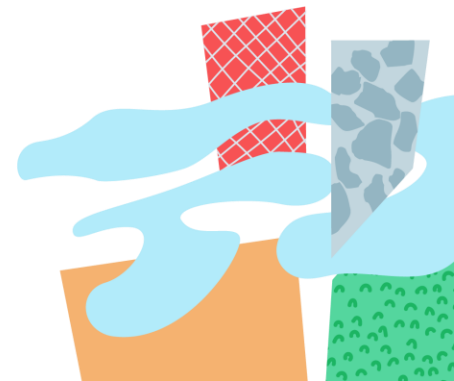


Public Consultation:

Six weeks - 11 Sept – 23 Oct

Aims of Pre-Draft Consultation

- Strengths to harness
- Ideas for opportunity sites
- Hopes and concerns





How to make a submission

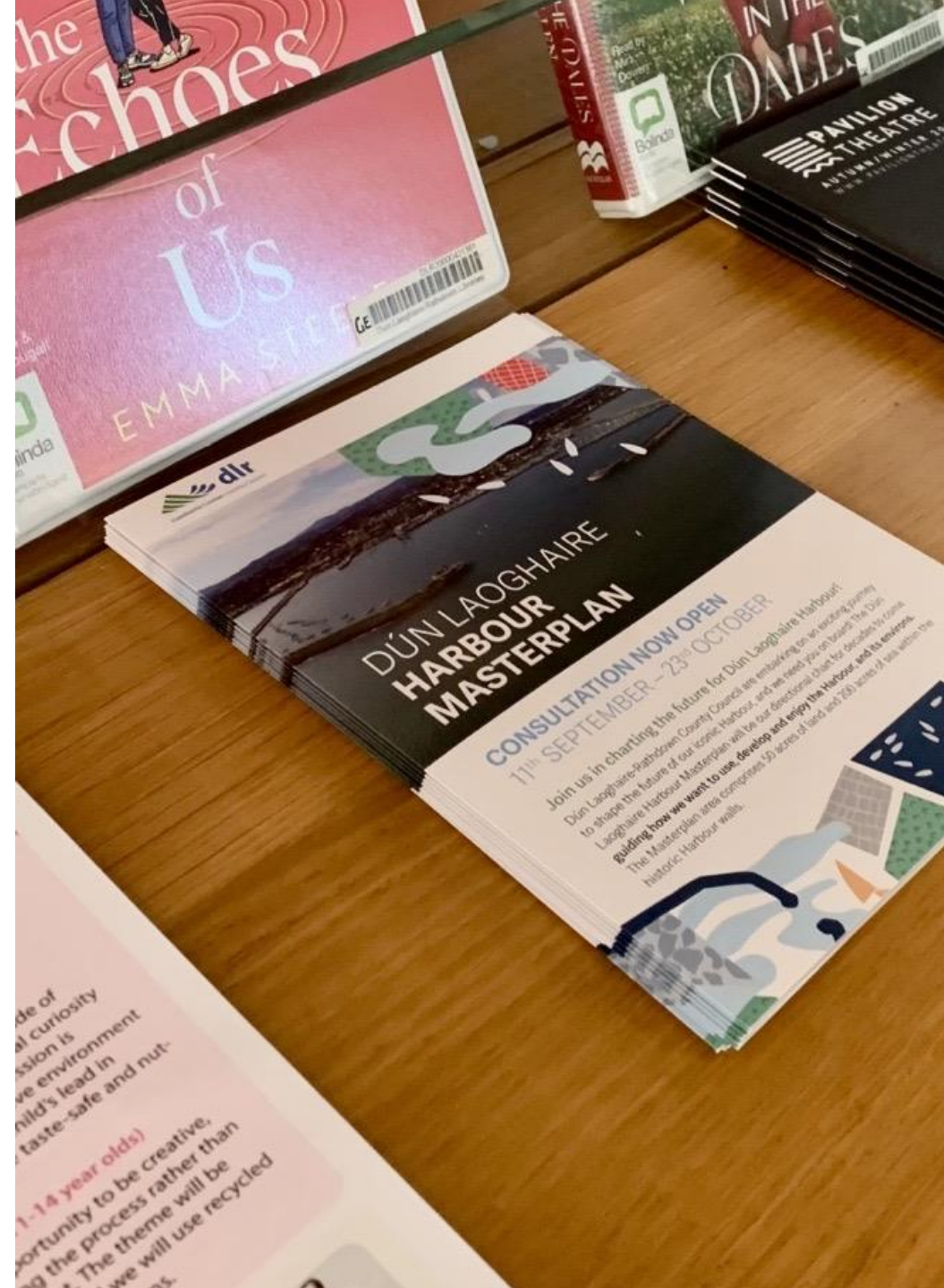
- **Online Survey – Citizen Space**
11 September - 23 October
- **E-mail submissions** - to harbour@dlrcoco.ie
- **Written submissions**
 - *Harbour Section, Dún Laoghaire Rathdown County Council, County Hall, Marine Road, Dún Laoghaire, Co. Dublin*
- **Library Drop-Box**





Engagement Activities

- **Meetings:** c. 30 meetings with harbour stakeholders and community groups.
- c.60 emails issued with information to a wider group of local stakeholders to share with their networks



Library and Creative Engagements

- **dlr Lexlcon Library Exhibit** – view project posters and contribute to our feedback station
- **Pop-up and Youth Open House at dlr Lexlcon Library** – *Saturday 12 October, 11 – 3pm*
- **u18's Creative Submissions** – 'Dún Laoghaire Harbour - Wish You Were Here!' Postcard
 - Engaging with local primary schools

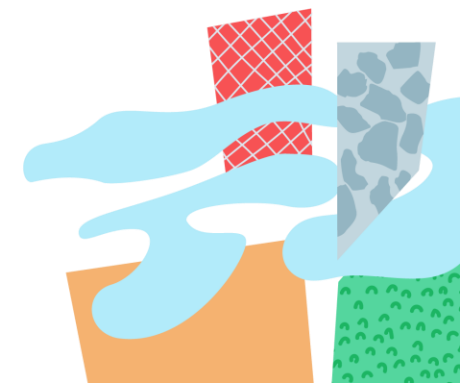
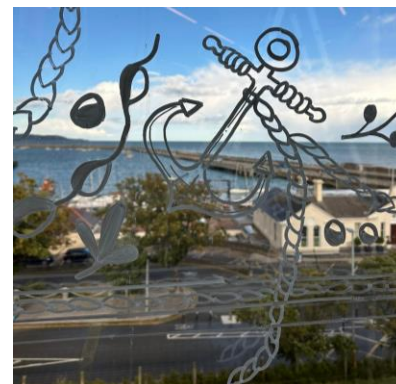


Library and Creative Engagements



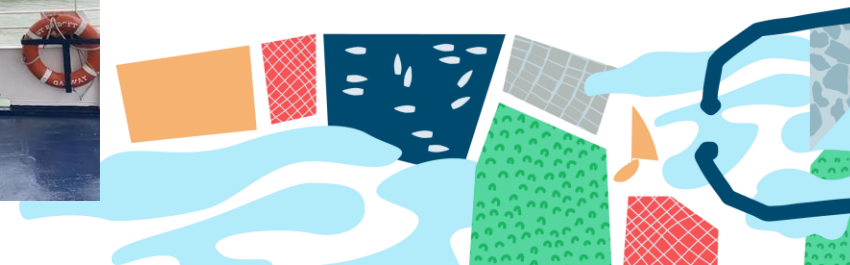
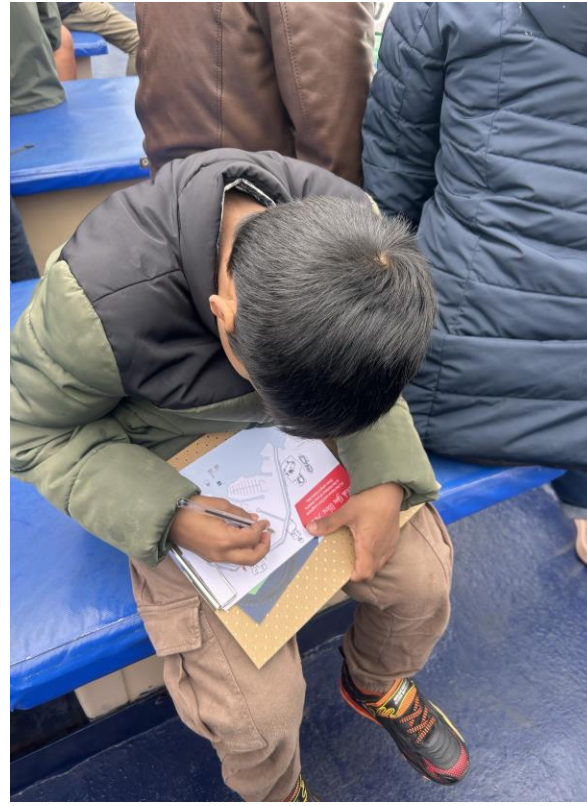
- **Temporary Window Installation** – Chalk Artist @whitedoodlewindows created a piece, encouraging us to reframing our harbour view, and **imagine what might be!**

This was in place for two weeks in the window of dlr LexIcon Level 4.



Boat Tour

- x5 trips each lasting 45mins
- 400 people
- Free event
- Guided Harbour tour from Tim to give people a different perspective on the activities taking place in the Harbour
- Information station on the pier – handing out leaflets/talking to walkers



Awareness raising

- Citizenspace webpage
- DLR News / press release
- DLR Times
- Library Newsletter – digital and print
- Leaflets
- Posters
- Social media posts
- Ongoing promotions / outreach - through community networks, PPN, strategic stakeholders





Imagery from Ireland and around the world to inspire you...

Consultation Report – Winter 2025

