

# Dún Laoghaire Harbour Masterplan



**What is a Masterplan?**

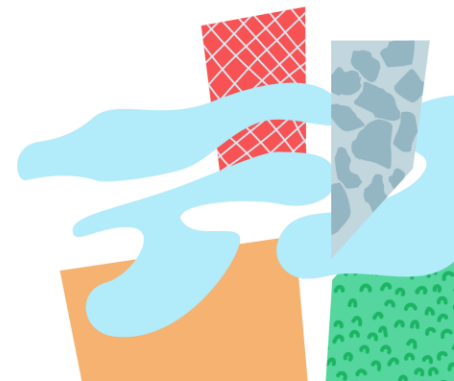


# What is a Masterplan?

- The Dún Laoghaire Harbour Masterplan will be our directional chart for decades to come, **guiding how we want to use, develop and enjoy the Harbour, and its environs.**

A process that defines what is important about a place and how its character and quality can be protected and improved

A long-term, non-statutory planning **document** that sets out a **future Vision** for an area to guide decision-making around its growth and development.



# What is a Masterplan?

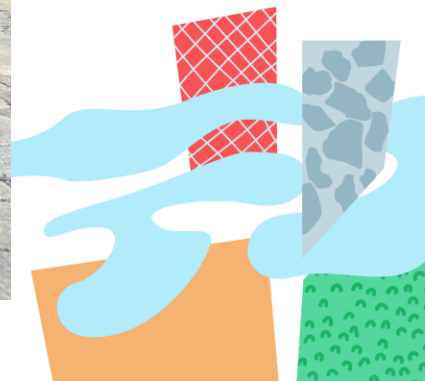
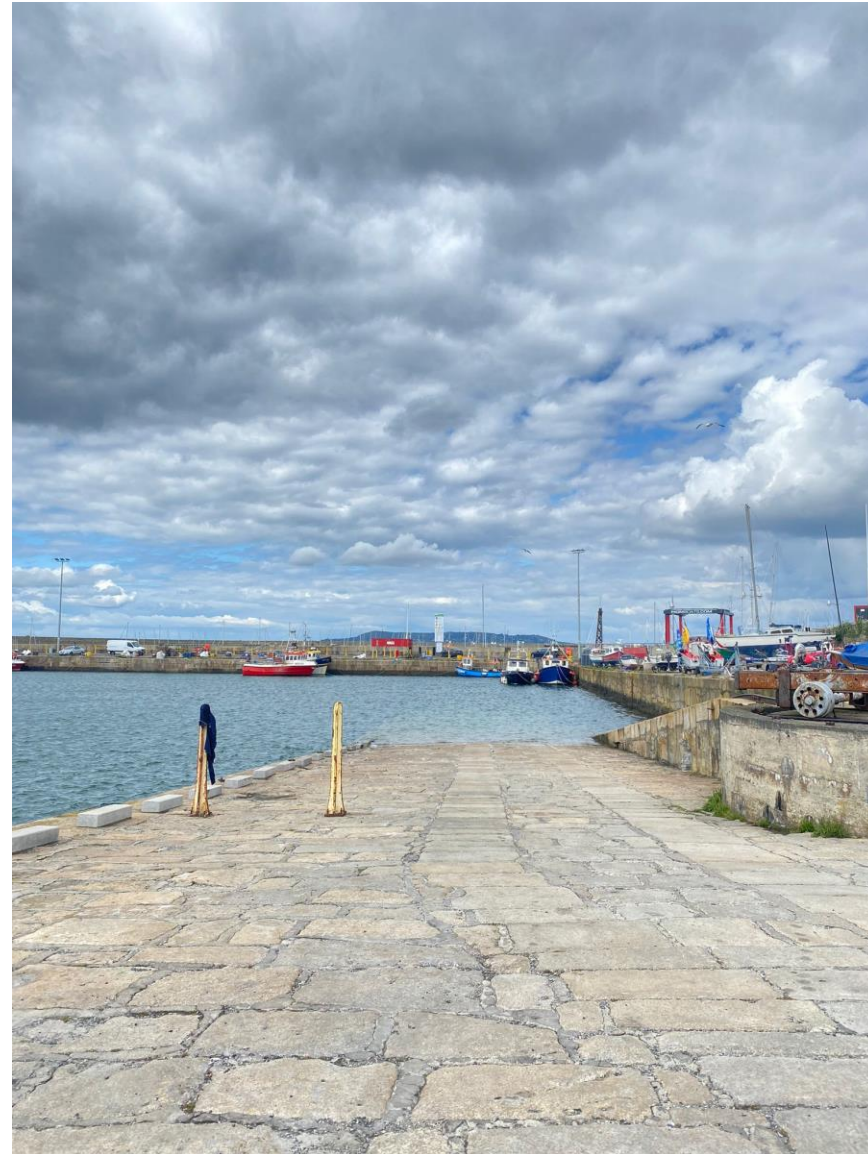
- The Masterplan will contain ideas for enhancing the **environment, heritage, economy, recreation, tourism and public spaces** within and around Dún Laoghaire Harbour and its waters.
- It will contain short, medium, and long-term actions for their achievement.





# Why do we need one?

- Past Custodians: original Kingstown Harbour Commissioners, to the OPW, The Dept of Marine, and the former Dún Laoghaire Harbour Company.
- October 2018: Harbour Company was dissolved and the Harbour transferred into Dún Laoghaire County Council (DLRCC).
- DLRCC have now procured a Design Team to produce a Masterplan for Dún Laoghaire Harbour to guide its operations and development into the future.



# The Team Involved

- Dún Laoghaire-Rathdown County Council
- Fáilte Ireland
- Arrow Architects – Lead Design
- Sleth Architects – Urban Realm
- M-CO – Communications & Consultation

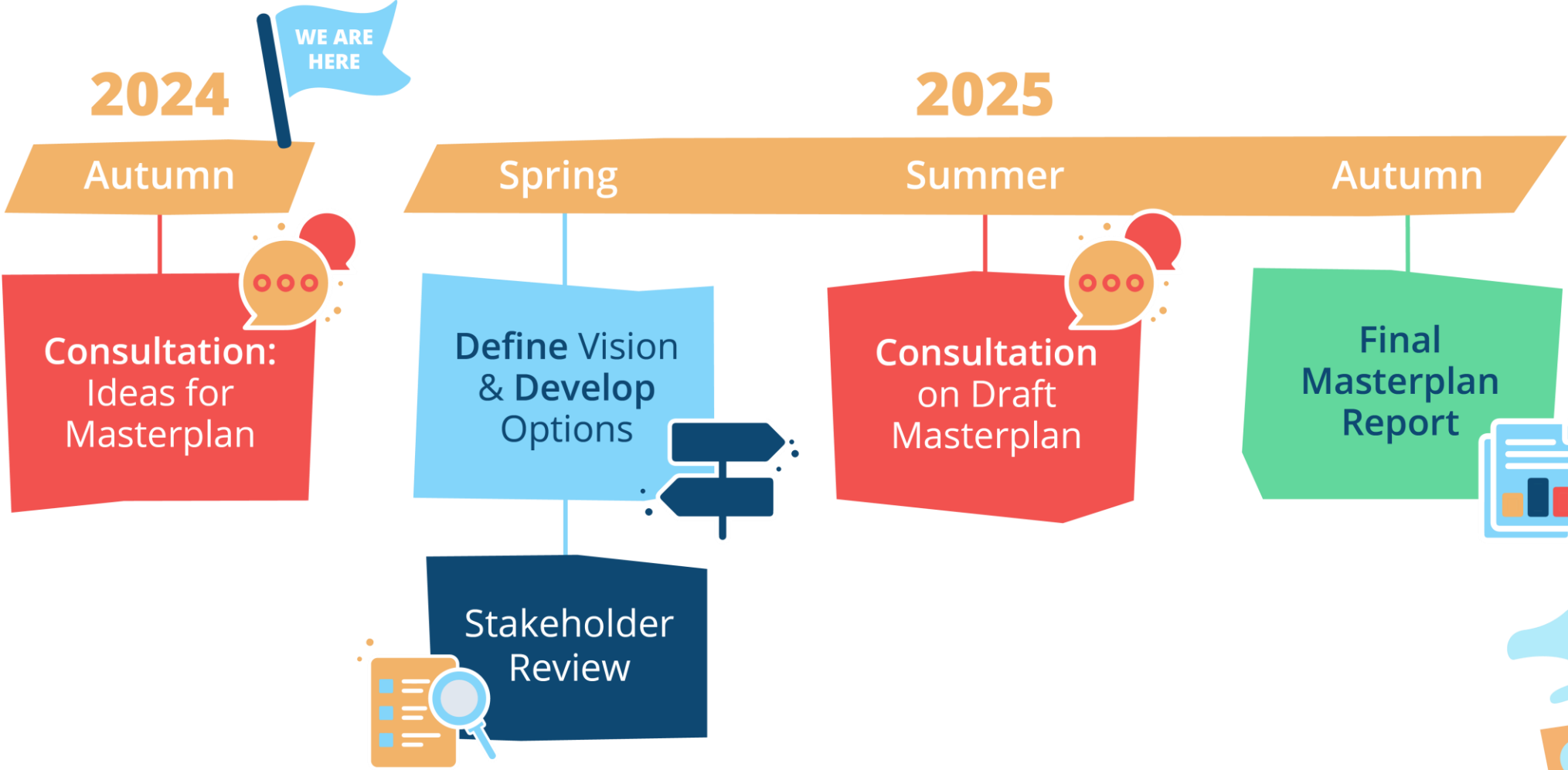


SLETH Office for  
architecture  
and planning



# Process of development

Launching 'Pre-Draft' Consultation 11 Sept – 23 Oct

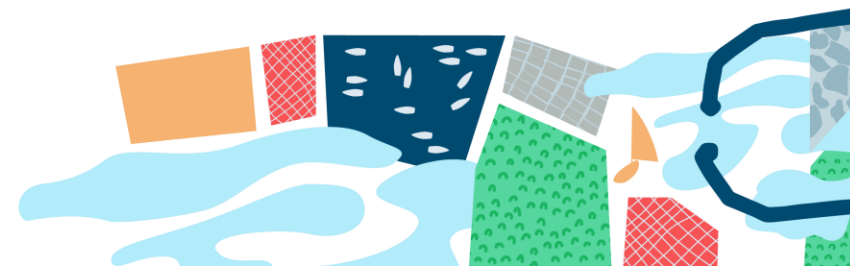


## What will happen once the Masterplan is completed?

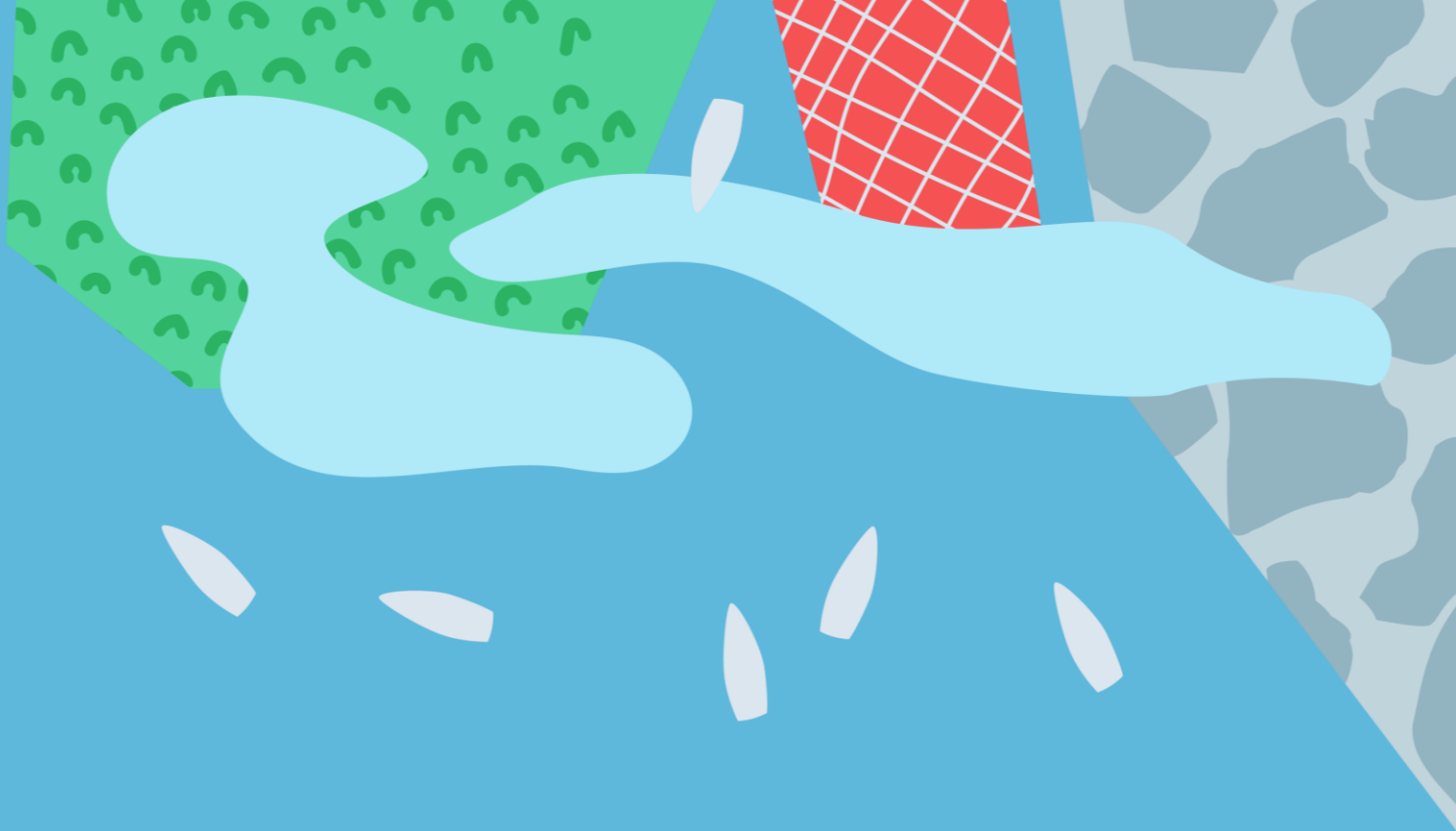
After the Masterplan is produced, the Council will work to secure funding, investment and partners to make these actions happen.

Detailed designs will be created for key parts of the Masterplan, and separate formal planning applications would be made where needed.

Masterplan will feed into the next County Development Plan







# The Context



## National Planning Policy

- Project Ireland 2040 – National Planning Framework & National Development Plan
- Maritime Area Planning Act 2021
- National Ports Policy 2013

## Local Dún Laoghaire Studies

- Indecon report on Economic Plan for Dún Laoghaire Harbour
- KPMG report on Dún Laoghaire Town Spatial and Economic Study, 2021
- Dún Laoghaire Harbour Masterplan 2011 (non-statutory plan)
- Dún Laoghaire Harbour Heritage Management Plan

## Regional Planning Policy

- Regional Spatial and Economic Strategy 2019-2031
  - County Development Plan 2022-2028
  - Interim Dún Laoghaire Urban Framework Plan (Appendix 17 of CDP)
- 



## Other relevant plans and projects

- Cruise Ship Business
- NTA BusConnects project
- DLRCC Coastal Mobility Route
- Quarterdeck Innovation Campus (Ferry Terminal)
- Dublin Array Windfarm O&M Base
- Green Parklet in the area between Royal Irish Yacht Club and Irish Lights
- Watersports Providers Area
- Living Streets Dún Laoghaire
- Myrtle Square & Convent Lane Greening
- Dún Laoghaire Baths Project



# About the Harbour

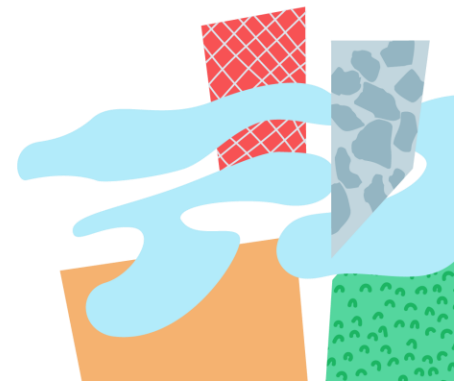
- Dún Laoghaire Harbour is almost 200 years old and is recognized as one of the finest man-made harbours in the British & Irish Isles
- The East and West Piers are the largest protected structures in Ireland
- The Harbour includes approximately 50 acres of land and 200 acres of water-space. It is intended to include consideration of the water-space in Dún Laoghaire Harbour within this Masterplan



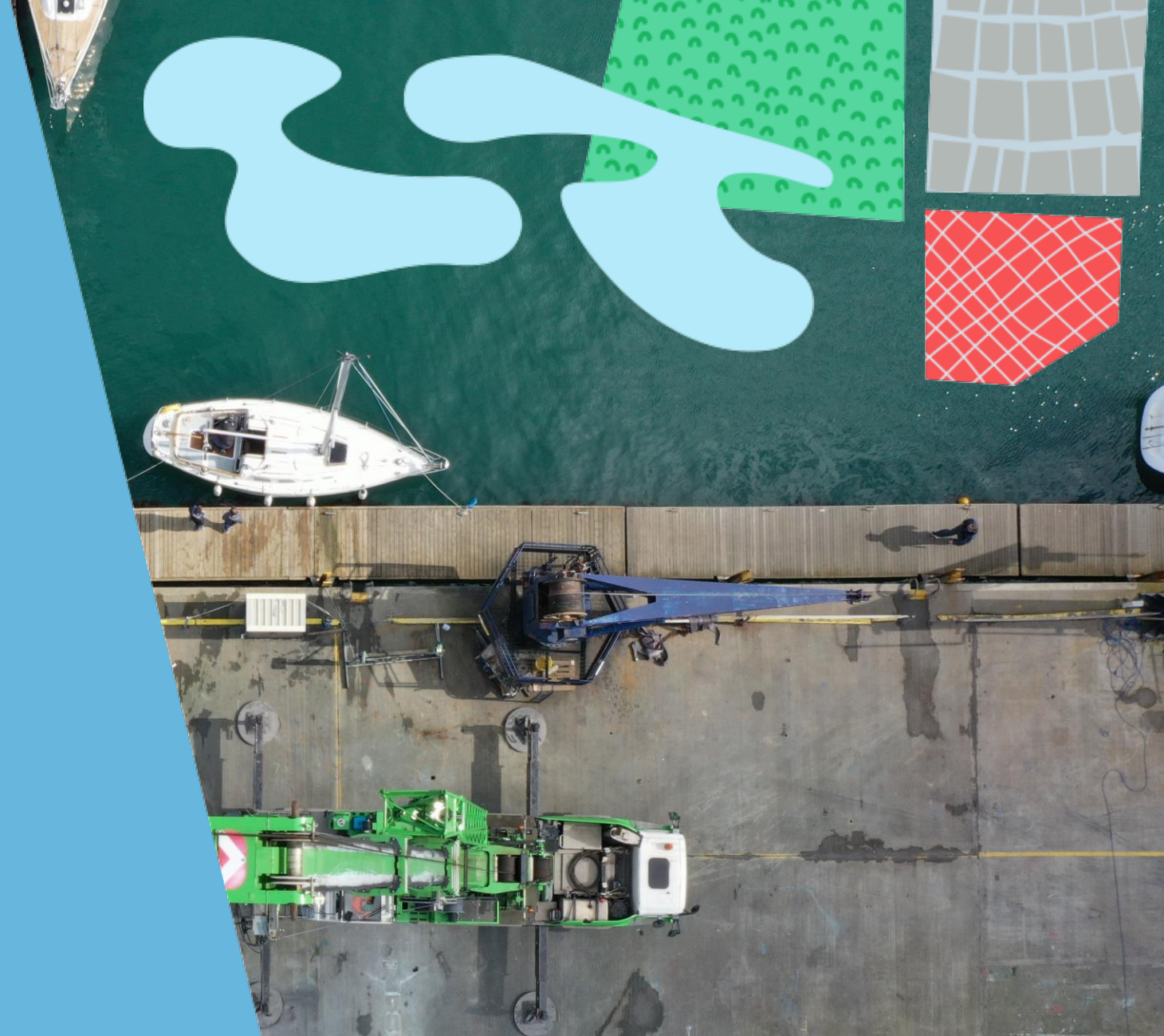


## Draft Objectives – based on existing policy priorities -expected to evolve as the project progresses

- **Inclusivity & accessibility:** Make the Harbour a more inclusive and accessible recreational amenity for the enjoyment of everyone.
- **Movement & connectivity:** Improve connections between and around the Harbour and Dún Laoghaire town through placemaking, design and integrated sustainable mobility.
- **Heritage & tourism:** Make the Harbour a world class destination offering new and enhanced attractions, rooted in its distinctive heritage and character.
- **Business & growth:** Support and promote existing mixed uses (maritime, recreational, fishing and commercial services) while fostering new economic, community and tourism opportunities.
- **Regeneration:** Rejuvenate and repurpose former ferry lands and other opportunity sites through appropriate, sustainable development for public, visitor and commercial needs.
- **Climate:** Build climate resilience through climate adaptation and mitigation measures and adoption of circular design principles.
- **Landscape & environment:** Maintain and enhance blue and green assets for biodiversity and healthier public spaces



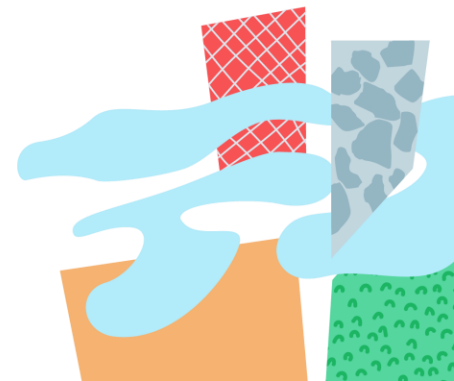
# The Site



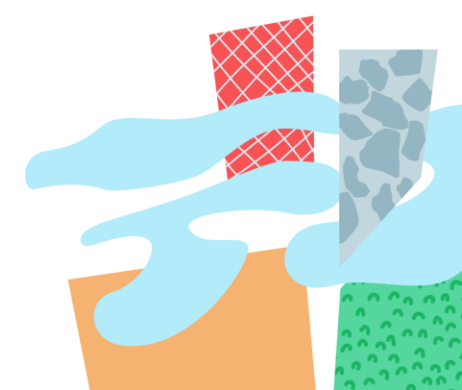


# Key Opportunity Sites

- We want **to continue to support and enhance existing uses, whilst exploring new opportunities** in the Masterplan area.
- The Masterplan area comprises 50 acres of land and 200 acres of sea within the historic Harbour walls. While some of the land around Harbour has long-term tenants or is privately owned, **the Harbour does have significant opportunity sites**. These could be repurposed for different uses – recreation, heritage, tourism, accommodation or commercial.



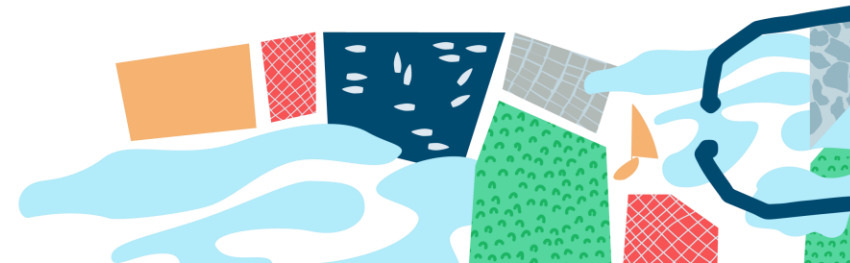
# Consultation Map

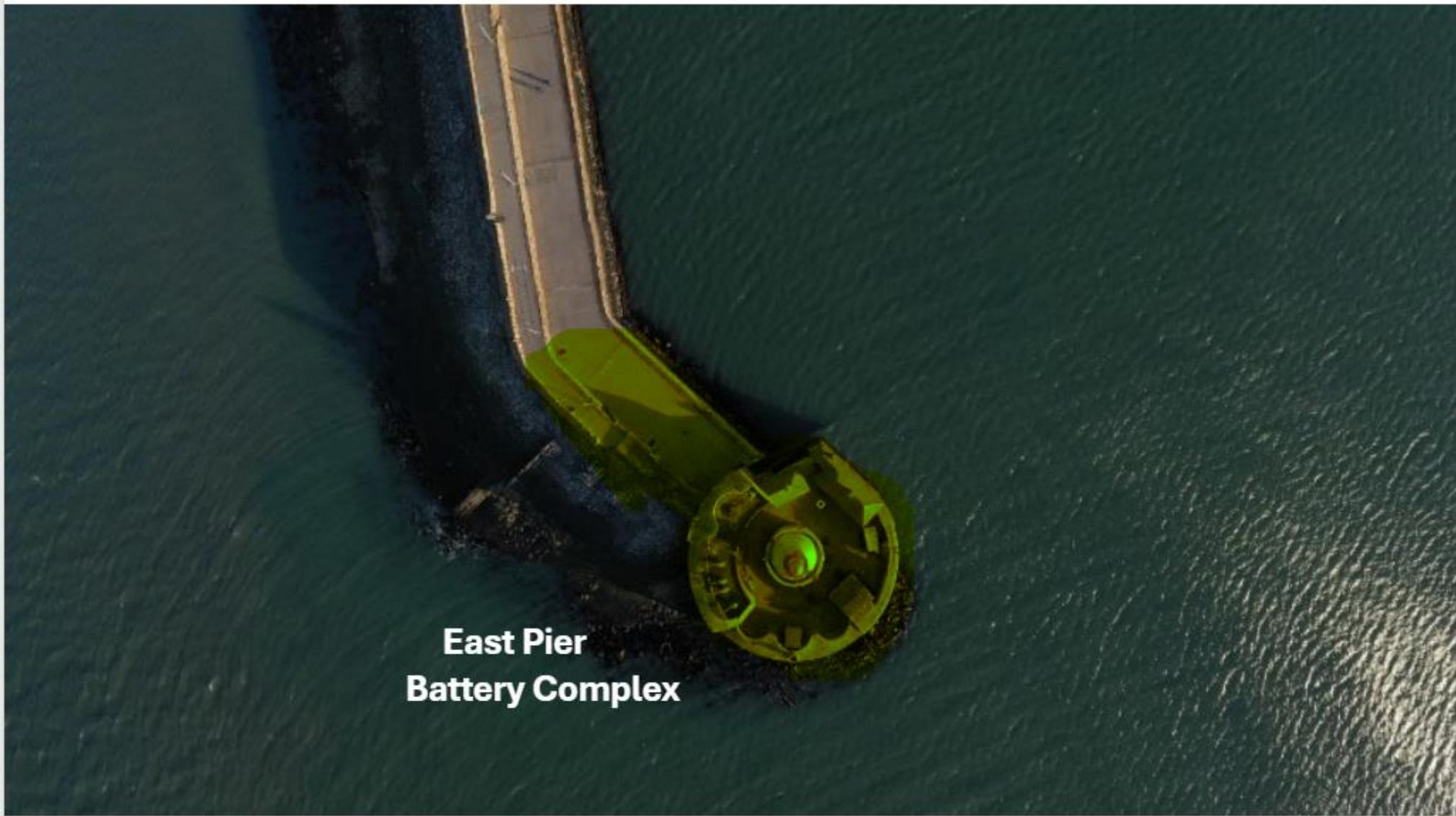




# Key Opportunity Areas

- East Pier Battery Complex
- Berth 1, East Pier
- Carlisle Pier generally, to include the Veranda/toilet block adjacent to Queens Road
- Berth 4 Ramp area (Behind Underground carpark)
- Ferry Terminal and Former Stena HSS compound
- Pedestrian / cycleway from Irish Lights to West Pier (under bridge)
- Coal Harbour Watersports' Area
- West Pier Training School area
- The Gut
- Water Space in the Harbour





**East Pier  
Battery Complex**





**Carlisle Pier**

**Berth 1  
East Pier**





**Ferry Terminal and  
Former Stena HSS compound**

**Berth 4 Ramp area**





**Pedestrian / cycleway from  
Irish Lights to West Pier**

**Coal Harbour  
Watersports' Area**



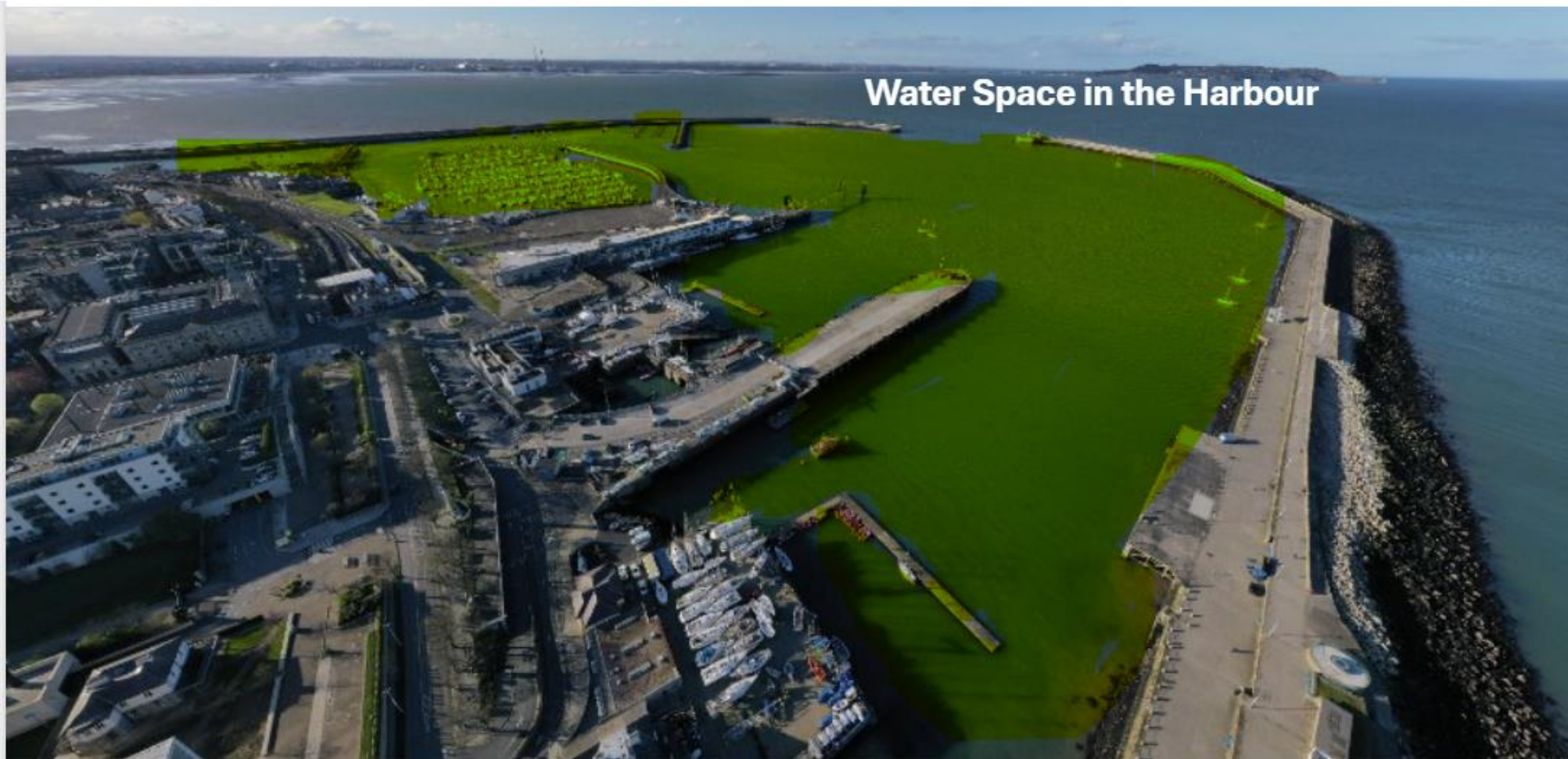


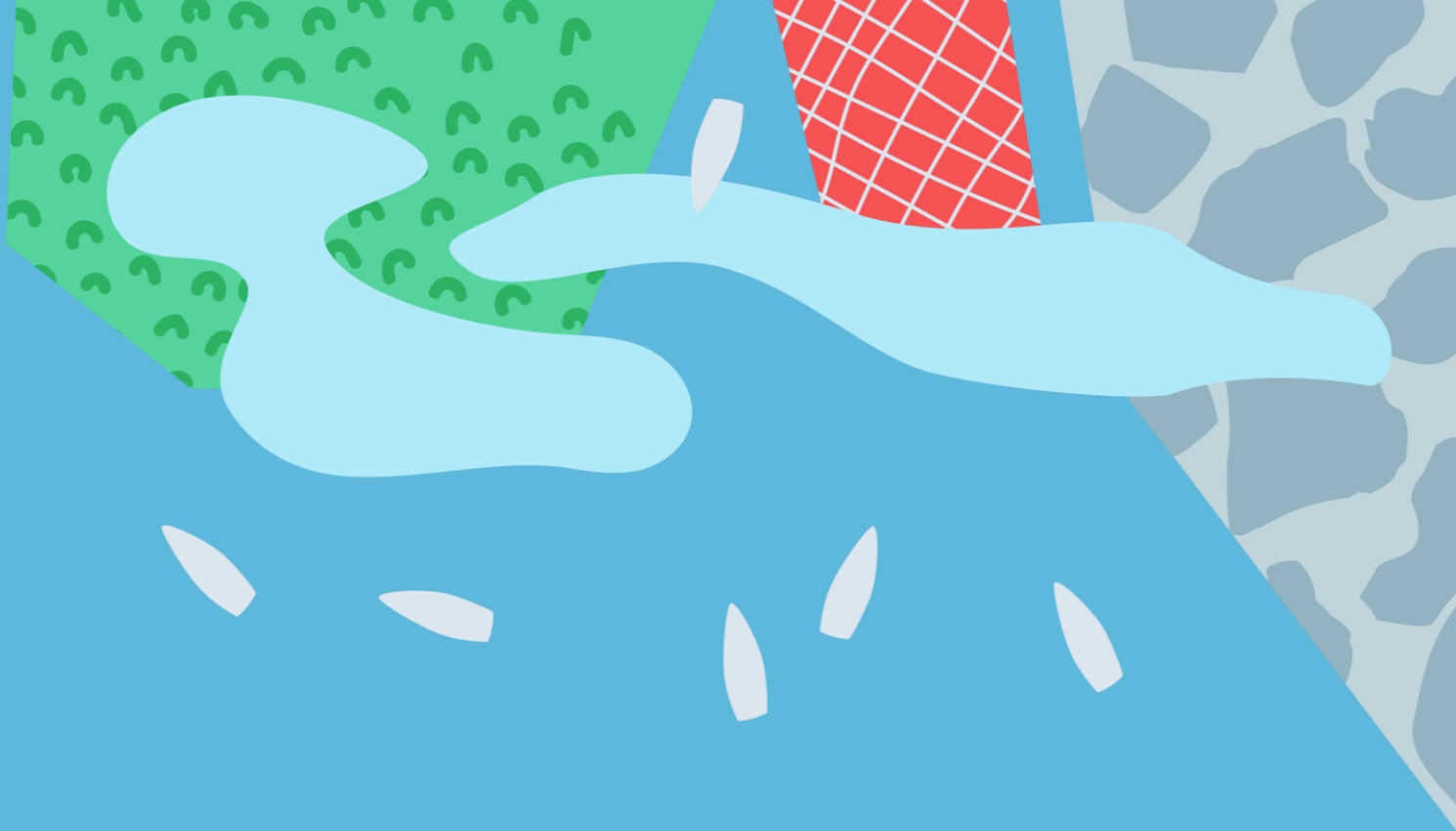
West Pier Training School area

The Gut



## Water Space in the Harbour





# Public Engagement



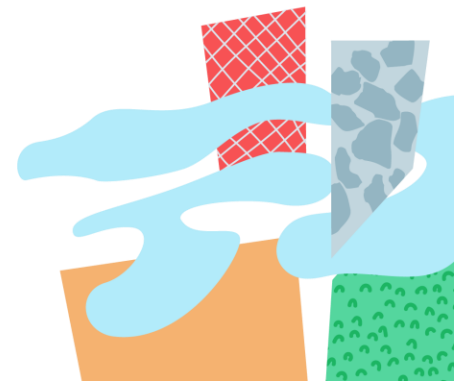


## Public Consultation:

Six weeks - 11 Sept – 23 Oct

### Aims of Pre-Draft consultation

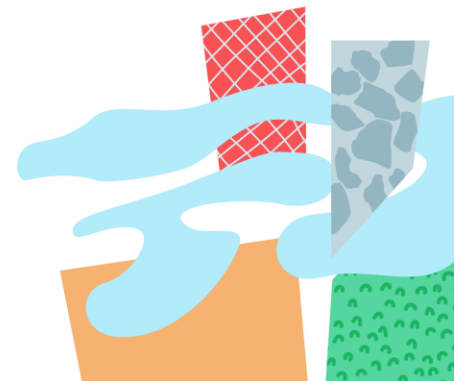
- What are the strengths to harness?
- Ideas for opportunity sites?
- Hopes and concerns?





# How to make a submission

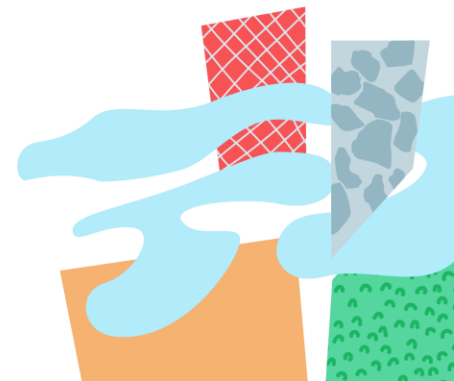
- **Online Survey – Citizen Space**  
11 September - 23 October
- **E-mail submissions - to**  
[harbour@dlrcoco.ie](mailto:harbour@dlrcoco.ie)
- **Written submissions**
- **Library Drop-Box**





# Engagement Activities

- **Meetings:** A number of Harbour stakeholders and community groups invited to Meet the project team. Combination of individual meetings and group meetings.
- **Webinar** - *2nd October at 7pm*
- **dlr Lexlcon Library exhibit** – view project posters and contribute to our feedback station
- **Pop-up and Youth Open House at dlr Lexlcon Library** – *Saturday 12 October, 11 – 3pm*
- **Children's art submissions** – Wish You Were Here



# Harbour Boat Tour

Saturday 21<sup>st</sup> September.

x4 trips taking place - at 11am, 12pm,  
2pm and 3pm.

The boat ride will last about 45 minutes

Free event, open to everyone including  
children

Booking is essential – Citizen Space



# Awareness raising

- Citizenspace webpage
- DLR News / press release
- DLR Times
- Library Newsletter – digital and print
- Leaflets
- Posters
- Social media posts
- Ongoing promotions / outreach - through community networks, PPN, strategic stakeholders



The poster features an aerial view of the harbour with a stylized map overlay. The map uses various colors and patterns to represent different zones: green with trees for parks, blue for water, grey for buildings, and orange for other areas. The text 'DÚN LAOGHAIRE HARBOUR MASTERPLAN' is prominently displayed in white on a dark background at the bottom of the image.

**DÚN LAOGHAIRE  
HARBOUR  
MASTERPLAN**

**CONSULTATION NOW OPEN**  
11<sup>th</sup> SEPTEMBER – 23<sup>rd</sup> OCTOBER

**Join us in charting the future for Dún Laoghaire Harbour!**  
Dún Laoghaire Rathdown County Council are embarking on an exciting journey to shape the future of our iconic Harbour, and we need you on board! The Dún Laoghaire Harbour Masterplan will be our directional chart for decades to come guiding how we want to use, develop and enjoy the Harbour, and its environs. The Masterplan area comprises 50 acres of land and 200 acres of sea within the historic Harbour walls.



A stylized map graphic at the bottom of the poster, showing various colored zones and patterns, including a blue area with white dots, a green area with trees, and an orange area.

# Consultation Report – Winter 2025

