

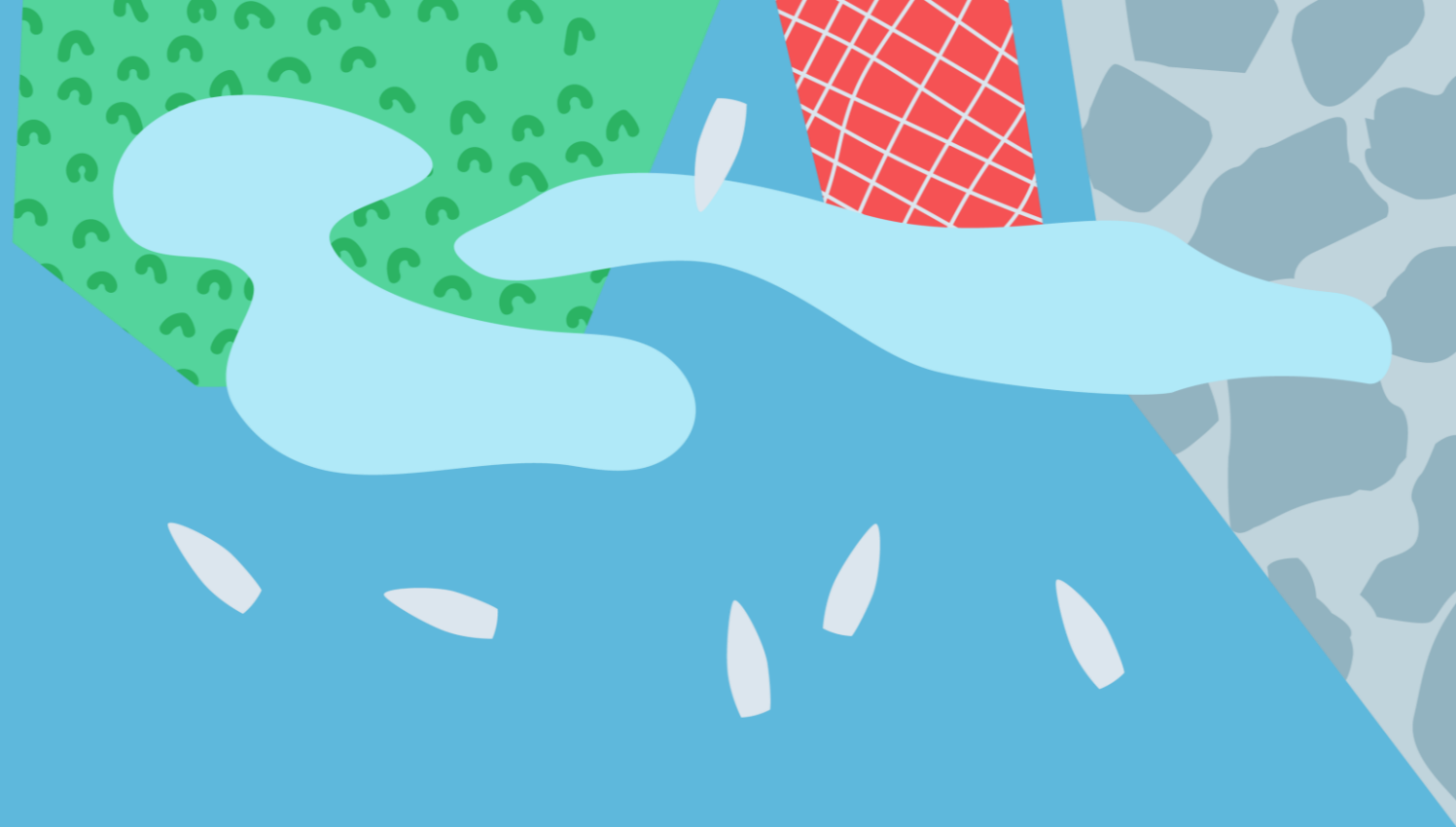
Pre-Draft Public Consultation Report

Dún Laoghaire Harbour Masterplan

December 2024

Contents

1. Introduction	3
2. Consultation Summary	7
3. Consultation Process	14
4. The Harbour Now – Strengths	23
5. Feedback on Key Themes	27
• Water Sports and Water Space	
• New Development Opportunities and Services	
• Movement, Connections, Mobility, Universal Access	
• Marine Industries, Business, Commercial Operations	
• Heritage	
• Climate, Biodiversity, Environment	
• Navy, Emergency Services, Irish Lights	
• Process, Consultation, Masterplan	
6. Next Steps	67



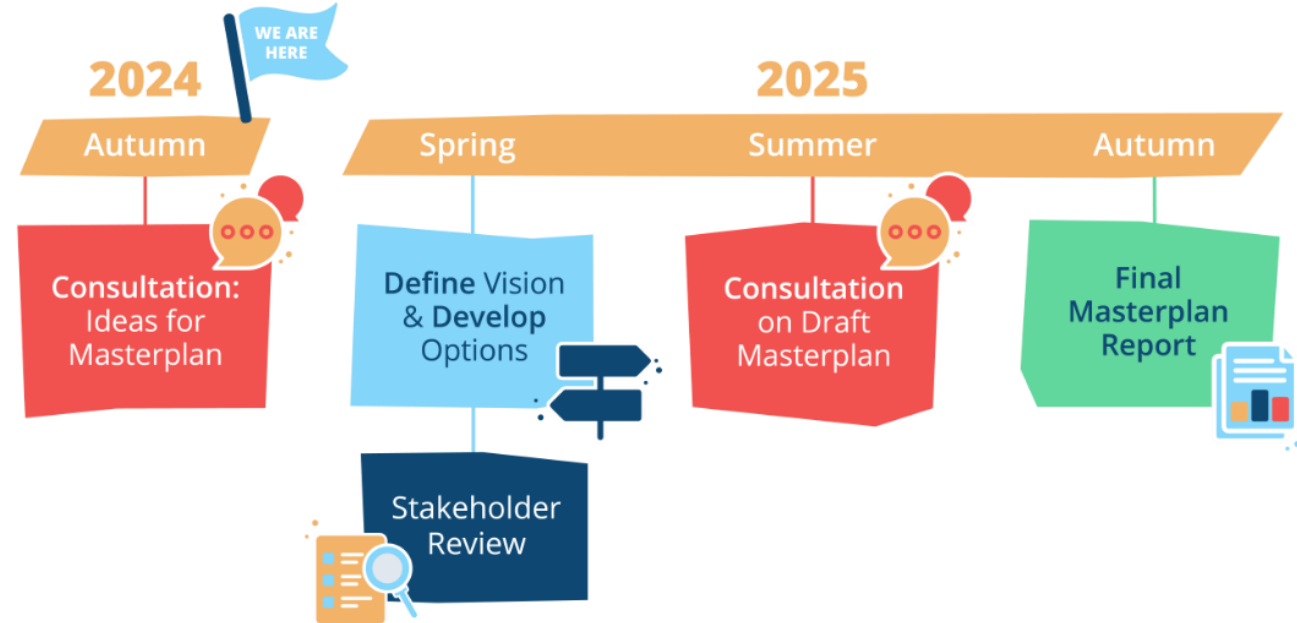
1. Introduction

Background

Dún Laoghaire Rathdown-County Council, with support from Fáilte Ireland, are creating a Masterplan for Dún Laoghaire Harbour to guide its operations and development into the future.

This report outlines feedback received during the ‘Pre-Draft’ public consultation which took place from 11th September to 23rd October 2024 and was the first round of consultation on the project. The aim of this consultation was to promote interest in the Masterplan and to encourage feedback on what works well now, along with obtaining ideas for the Harbour’s improvement from a variety of different perspectives.

The report provides an overview of activities completed and outlines key themes that emerged. It has been compiled by M-CO who are managing stakeholder engagement for the Harbour Masterplan. The report will inform early design work by Arrow Architects and SLETH who are leading the Dún Laoghaire Harbour Masterplan consortium.

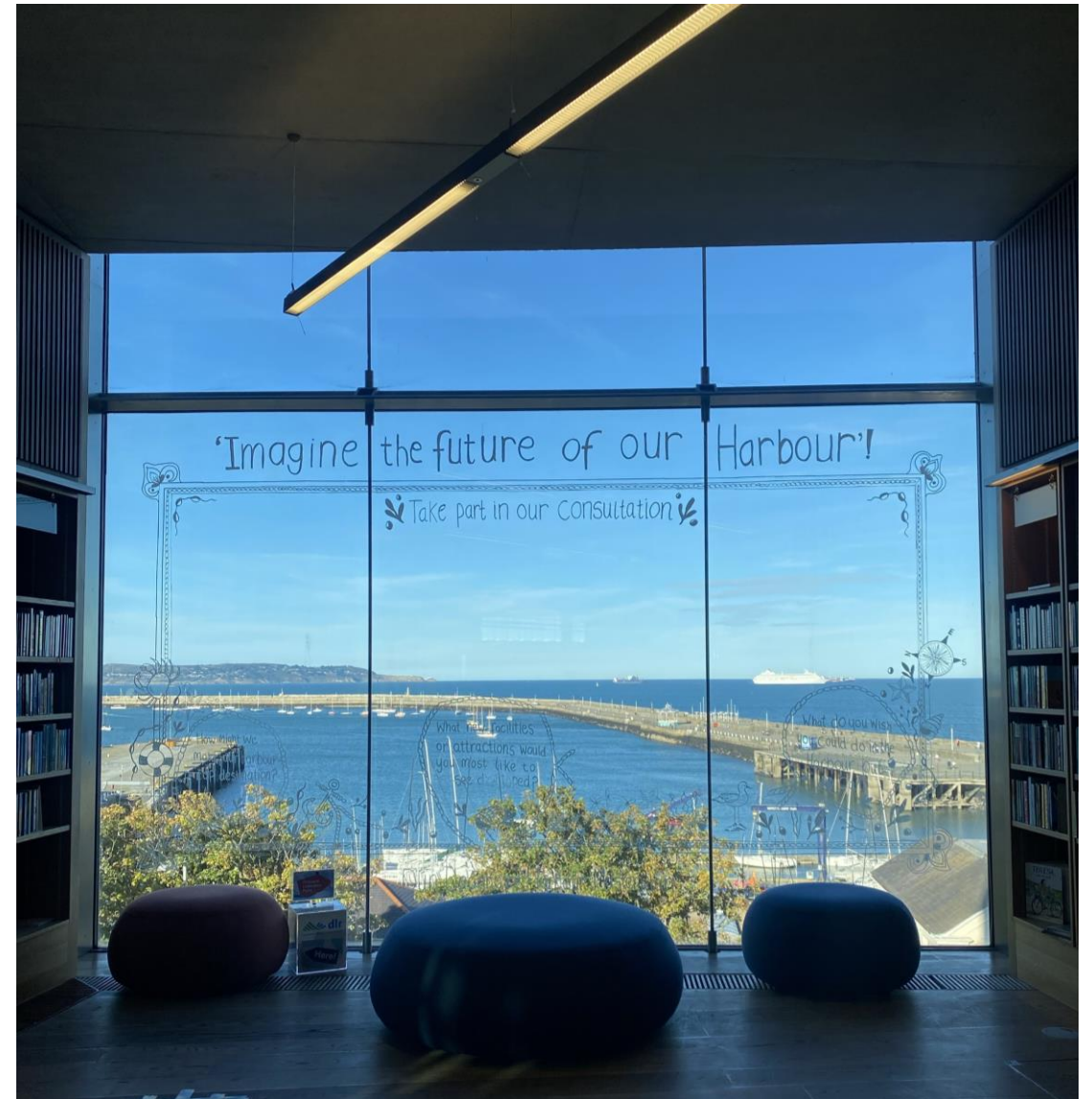


What is a Masterplan?

A Masterplan is a **long-term, non-statutory planning document** that sets out a **future Vision** for an area to guide decision-making around its growth and development. The Masterplan will contain ideas for enhancing the **environment, heritage, economy, recreation, tourism and public spaces** within and around Dún Laoghaire Harbour and its waters, and will contain short, medium, and long-term actions for their achievement.

There will be **multiple opportunities for future public input** including workshops on the emerging vision and design options in early 2025, along with a further round of extensive consultation once the draft Masterplan is produced towards the end of 2025.

After the Masterplan is finalised, the council will work to secure funding, investment and partners to make these actions happen. Detailed design will be created for key parts of the Masterplan, and separate formal planning applications would be made where needed.



Chalk window drawing in the Children's section of dlr LexIcon promoting the consultation.

Draft Objectives for the Masterplan

Draft Objectives were developed to guide this round of consultation, reflecting existing policy priorities and research. These are expected to evolve as the project progresses.



Photograph of the East Pier submitted by a member of the public via the online survey.

Inclusivity & accessibility - Make the Harbour a more inclusive and accessible recreational amenity for the enjoyment of everyone.

Movement & connectivity - Improve connections between and around the Harbour and Dún Laoghaire town through placemaking, design and integrated sustainable mobility.

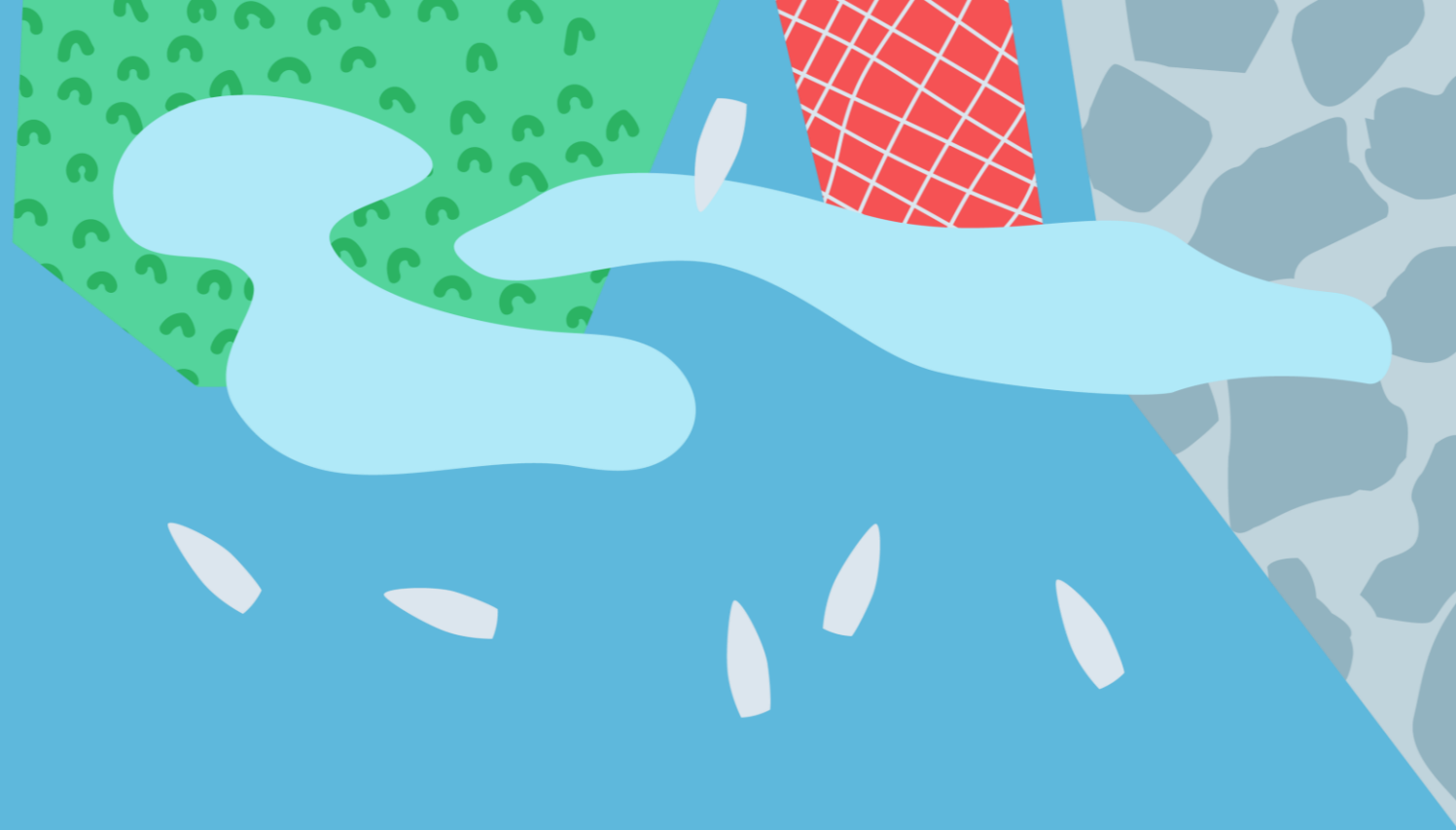
Heritage & tourism - Make the Harbour a world class destination offering new and enhanced attractions, rooted in its distinctive heritage and character.

Business & growth - Support and promote existing mixed uses (maritime, recreational, fishing and commercial services) while fostering new economic, community and tourism opportunities.

Regeneration - Rejuvenate and repurpose former ferry lands and other opportunity sites through appropriate, sustainable development for public, visitor and commercial needs.

Climate - Build climate resilience through climate adaptation and mitigation measures and adoption of circular design principles.

Landscape & environment - Maintain and enhance blue and green assets for biodiversity and healthier public spaces.



2. Consultation Summary

How many people participated?

A variety of engagement activities were held to promote widespread involvement. A snapshot of these are summarised below showing high participation numbers, including a total of 1,053 formal submissions and 36 individual meetings with stakeholder groups. This produced a significant volume of ideas, summarised in this report.

866 Survey Responses

181 Email Submissions

6 Postal Submissions

= 1,053 formal submissions

600
at consultation events including Boat Tour

36 Stakeholder Meetings with 55 groups

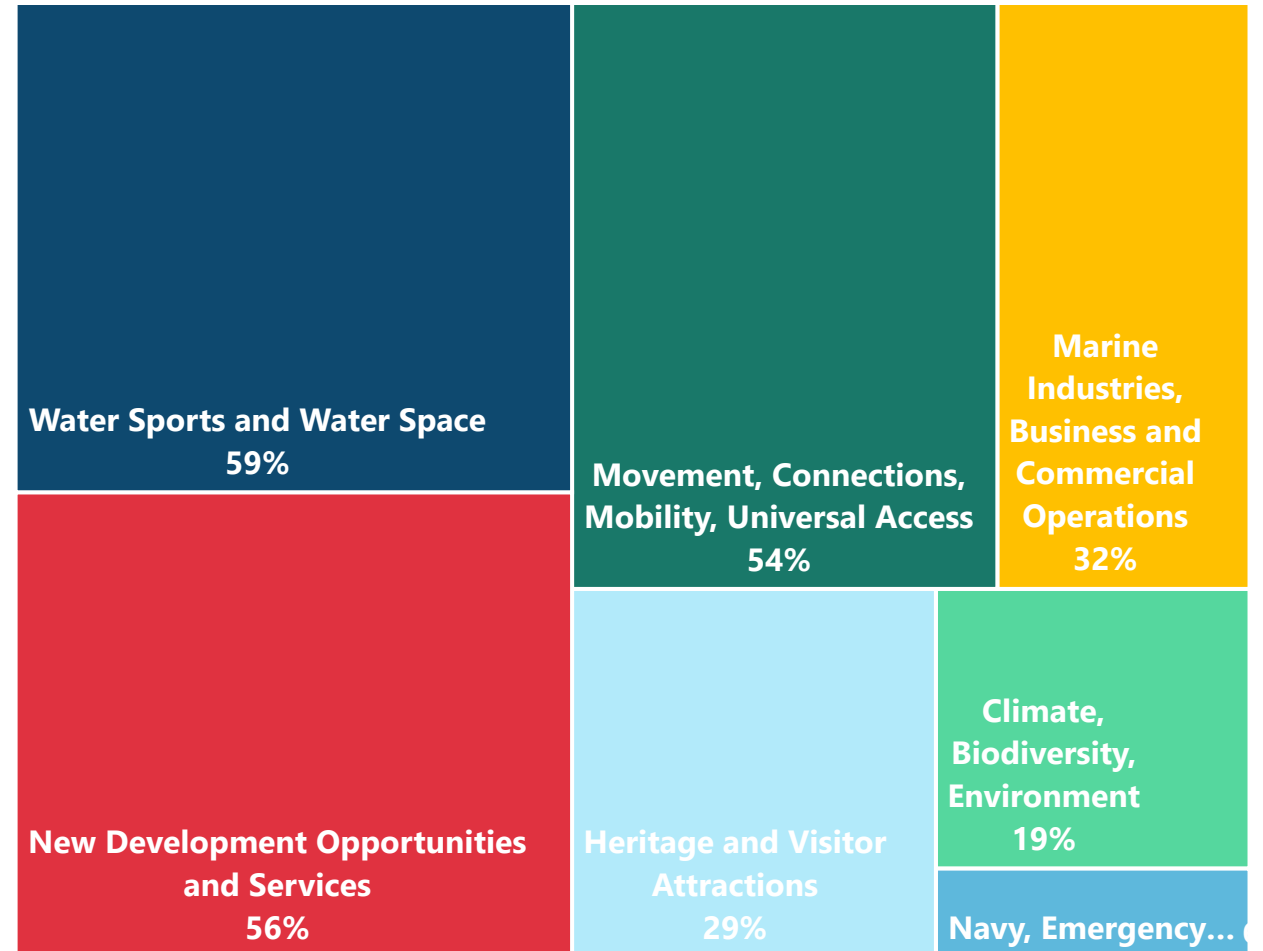
370 Feedback Cards

280 Children's Creative Postcards

What ideas were received? Key themes

Consultation feedback points to an emerging vision for Dún Laoghaire Harbour as a vibrant hub for water sports, marine industries, heritage tourism and community facilities, with a focus on accessibility, sustainability and economic growth. This graphic visualises the key themes that emerged in the consultation and the percentage of submissions mentioning that theme.

The highest number of comments were in relation to **Water sports and Water space** (mentioned in 59% of submissions), reflecting the widely held interest in enhancing water sports access and infrastructure. Next, came **New Development Opportunities and Services** and **Movement, Connections, Mobility, and Universal Access**. These themes encompass sub-themes such as retail, hospitality, accommodation, arts, culture and tourism attractions, public space, landscaping and facilities, reflecting the appetite for improved civic spaces and community facilities throughout the Harbour. The high volume of feedback on **Marine Industries, Business, and Commercial Operations** (32%) and **Heritage and Visitor Attractions** (29%) shows the desire to maintain and enhance commercial activity and to preserve the Harbour's unique heritage. Recurrent feedback under each of these themes is summarised in the following pages.



Water Sports & Water Space

- **Within this theme, the highest number of comments (35%) related to improving facilities for swimming and bathing.** Suggestions were made for lidos and cordoning off dedicated areas of the Harbour for swimming. There were also calls to create a dedicated water space for diving, and sea survival training.
- **25% of submissions were related to enhancing access and facilities for sailing.** Many called to create out-of-water boat storage for seasonal needs and events, including dry stack facilities. A common request was to improve mooring affordability and efficiency by transitioning from swing moorings to public or municipal pontoons in areas such as the West Bight.
- 12% of total submissions called to **develop facilities for emerging sports such as wing foiling** and many want to designate safe learning spaces within the Harbour waters for all water sports.
- To promote watersports, a number of suggestions were made for on-site **land-based facilities such as toilets, showers, changing areas, gear storage, compressors, and training spaces.**
- **High-quality public slipways** were frequently requested for all-tide water access and universally accessible berths and slipways.
- Some commented that **vehicle access** close to the Harbour and adequate parking facilities are important to facilitate watersports.
- There were suggestions to establish a **Community Watersports Hub** offering subsidised equipment rentals, lessons, and training in water safety, ecology, and navigation. Others called for **centres of excellence** in sailing, swimming and other watersports.
- Some commented that it was important to review the balance between commercial and recreational activities, as watersports expansion is currently limited by commercial operations and fairways.

Process, consultation, masterplan

- The community were excited about the possibilities offered by the Masterplan. Many expressed a **desire for ongoing collaboration** with local organisations and the public after the Pre-Draft phase to refine plans and throughout the planning and implementation process.
- Some suggested that Community Funding from the proposed Dublin Array project could be used to support watersports activities and assist with club development.
- Some noted that it was important to coordinate this plan with the Watersports Campus project to ensure alignment.

Movement, connections, mobility, universal access

- The survey revealed that **92% of respondents regularly walk on the pier** and are keen to maintain this as a primary use supported with universal access and comfort improvements.
- Many mentioned a need to strengthen and improve **connections between the Harbour and the town** to provide a combined offering as a destination for locals and tourists.
- **Improving access to the West Pier** was a common theme, with many citing the current limitations of one-way vehicular access. A significant number of submissions suggested a **pedestrian/cyclist bridge** over the DART line to connect West pier to Monkstown/Seapoint.
- Submissions often emphasised the importance of accommodating public transport infrastructure, including provisions for a **bus terminus and layover** as per Bus Connects plans and to engage with the National Transport Authority (NTA) in this regard.
- There was widespread **support for improving active travel infrastructure within and around the Harbour** with novel ideas for connected walking and bike routes between piers and suggestions made for more bike parking. Some emphasised that parking is an important facility for watersports with heavy equipment and people with limited accessibility.

New Development Opportunities and Services

- 56% of submissions made suggestions for new developments on 'opportunity sites' around the Harbour. The highest number of suggestions (31%) were for retail and hospitality including **restaurants, cafes and market spaces** on the waterfront.
- Many called for a **national events complex** – for music, cultural and heritage events/exhibits and other community uses. Others called for transitional zones that could accommodate periodic **large events**, such as international sailing events, or ice skating. Provision for camper vans and parking was suggested to cater for large events.
- 12% asked for **sports and recreation facilities** such as playgrounds, skate parks, sports pitches and courts, family areas, teen zones, and leisure centres. 11% of submissions called for **accommodation**. This theme incorporated requests for a mid-price hotel to cater for event needs, and for **housing** with a strong desire for affordable options and building on reclaimed land, with novel ideas for floating neighbourhoods.
- Many unique ideas were received for education centres, visitor experiences and extreme sports. A number of submissions suggested a maritime education centre/museum, others suggested attractions such as aquariums, ziplines, tall ships, concert venues, floating stages and underwater restaurants.

Marine Industries, Business and Commercial Operations

- **32 % of submissions mentioned this theme.** Common suggestions included encouraging growth in boat yards, supporting services for water sports, repair services and other maritime industries, including offshore wind, to capitalise on the area's unique coastal potential. Developing a dedicated business park with a cluster of these activities was also suggested.
- **13% of submissions related to cruise ships and tenders.** While there were some calls for an increase in cruise passengers and an improved reception facility for those coming into Dún Laoghaire, submissions also noted complexities in the relationship between cruise ships, tenders, and recreational activities. Participants emphasised the need for thoughtful planning to ensure that these uses coexist harmoniously.
- The importance of **protecting the fairway for fishing vessels** was also highlighted, underscoring the Harbour's role in supporting traditional industries. To further enhance this, contributors proposed the creation of a fish market on the pier. This addition would not only serve the local fishing community but also create a vibrant attraction for residents and visitors alike.

Heritage

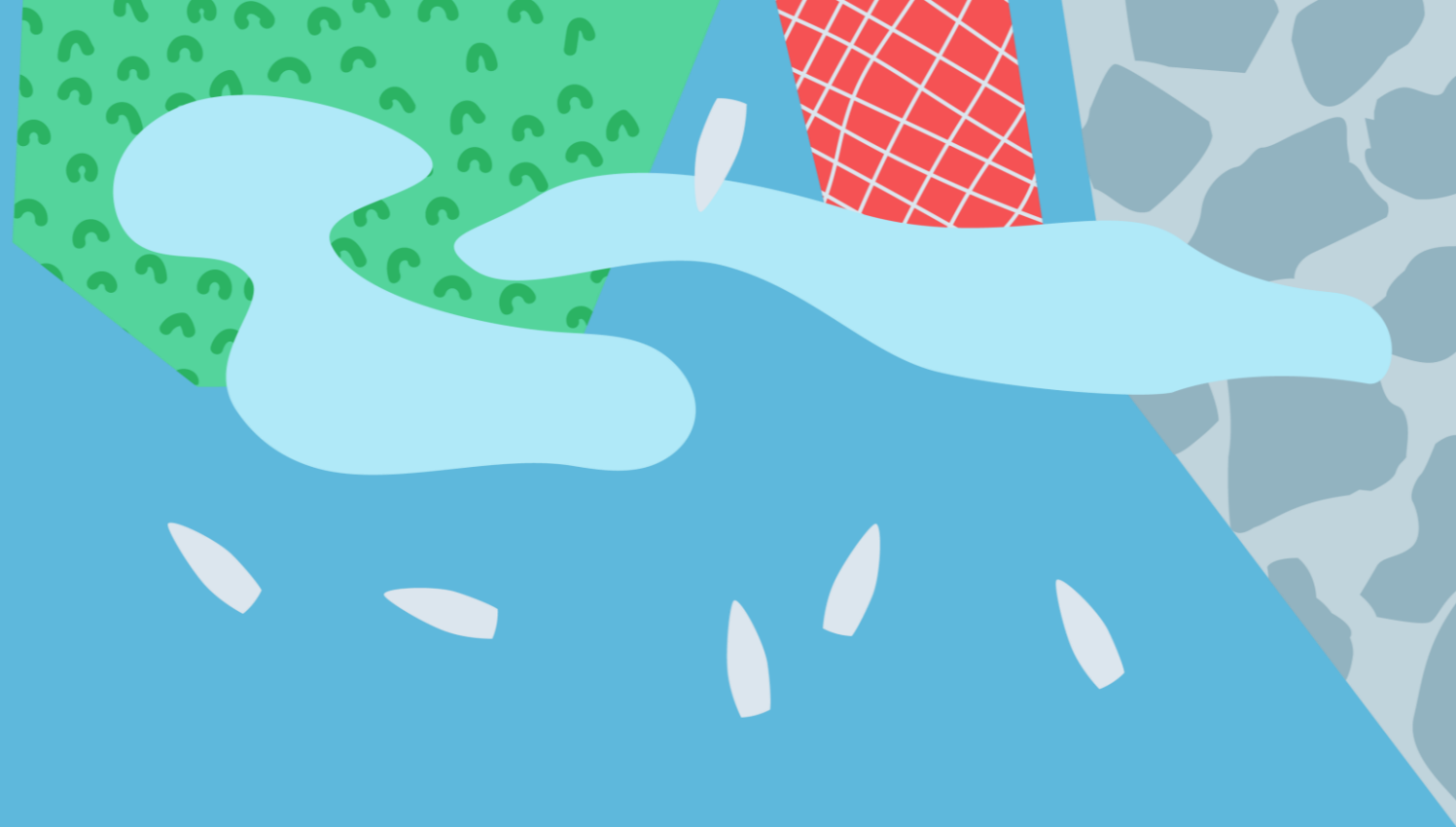
- The consultation highlighted the importance of celebrating and leveraging the rich heritage of Dún Laoghaire Harbour, transforming it into a cultural and historical centerpiece for the region, while also ensuring protection. Key among the suggestions was the promotion of the Dún Laoghaire lighthouses as iconic attractions.
- Sharing the Harbour's heritage was a high priority, with proposals suggesting the installation of information panels, exhibitions, and museums to tell its story. A specific suggestion was to reinstate the sun shelter canopy on the East Pier and bring the Victorian-era bandstand back into use, celebrating the area's historical charm.
- Submissions also called for the establishment of a dedicated home for the Irish Institute of Genealogical and Heraldic Studies, offering a hub for those exploring Irish ancestry and heritage.
- Engagement with **Fáilte Ireland's Dublin Coastal Trail** was another recurring theme, with calls to ensure the Harbour is seamlessly integrated into this initiative to enhance its profile.
- Submissions also supported the idea of **creating memorials, statues, and heritage trails** throughout the Harbour area, ensuring its past is honored while adding depth to the visitor experience.

Navy, Emergency Services, Irish Lights

- 6% of submissions related to the theme of Navy, Emergency Services and Irish Lights. A number of proposals suggested a marine training facility with an indoor training pool for Sea Survival Training.
- One significant submission reflected the Commission of Defence Report's recommendation for an **East Coast Naval Service base** – a strategic goal to develop a Forward Operating base on East Coast
- The creation of a dedicated **maritime services zone was another prominent suggestion**. This concept involved the extension of Berth #4 to accommodate a range of critical vessels, including the RNLI, the Irish Lights vessel, and wind farm servicing craft. To support this zone, a new breakwater was proposed.
- Submissions also called for the relocation of the All-Weather Lifeboat (ALB) mooring from its current position in the East Harbour to a site alongside the refueling berth. This move would be accompanied by the installation of a protective wave screen.
- Contributors emphasised that the proposed events ramp outside the ALB station should minimise wave reflection. They advocated restricting its use to RNLI operations and occasional events, to maintain operational integrity.

Climate, Biodiversity, and Environment

- 19% of submissions mentioned the theme of climate, biodiversity and environment, reflecting a commitment to sustainability and ecological stewardship within Dún Laoghaire Harbour.
- Key proposals included developing the park and surrounding area at The Gut for increased leisure activities while maintaining its natural character. The importance of water quality was also highlighted, with suggestions to implement real-time water quality testing.
- Increasing **greening and biodiversity** throughout the Harbour emerged as a central theme. Submissions proposed measures such as native planting, pollinator-friendly habitats, and integrating green infrastructure to enhance the ecological value of the Harbour.
- There were a number of suggestions for incorporating educational features such as interactive displays, marine ecology exhibits, and workshops to engage the public and inspire action.
- Partnerships with climate-focused organisations were also advocated for to foster climate stewardship and leadership. Proposals included **hosting events, repair cafes, and eco-innovation and circular economy hubs** to promote sustainability.
- Renewable energy was another common theme, with calls to establish a **renewable energy research hub** and the use of renewable energy to power the Harbour.



3. Consultation Process

How was the consultation publicised?

The following communication channels were used to build awareness amongst the public and local stakeholders.

- Project leaflet and map to improve understanding - distributed to dlr libraries and local stakeholders
- DLR Citizen Space webpage
- DLR News / press release
- DLR Times article
- Library Newsletter – digital and print
- Posters – located around the Harbour with an outdoor exhibition at Berth 1 on the East Pier
- Multiple social media posts on dlr accounts
- Over 100 emails to local stakeholder and community groups
- Ongoing promotions / outreach - through community networks and PPN
- Local Economic Office newsletter to 4,000 businesses - consultation specific circulation

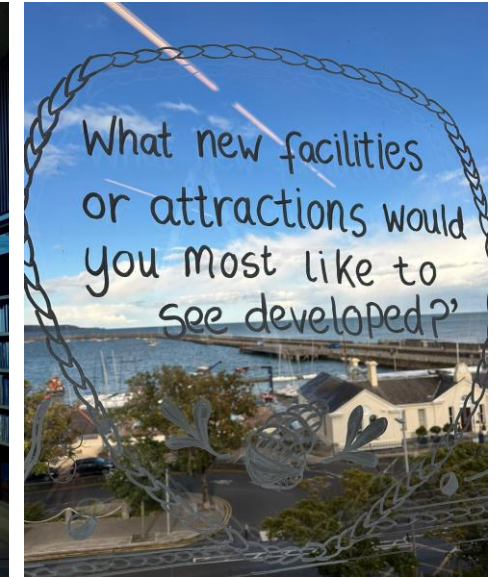


What engagement activities took place?

A range of interactive events and initiatives were organised to offer a variety of opportunities for stakeholders of all ages to engage directly with the team and suggest ideas.

- **Online survey** – hosted on dlr Citizen Space for the duration of the consultation period 11th September – 23rd October.
- **Stakeholder Meetings** – A combination of individual meetings and group meetings, online and in-person. The team had 36 meetings with c.55 different groups (See Appendix for meeting notes).
- **Free Boat Tours of Harbour** – Saturday 21st September
- **Webinar** – held on 2nd October at 7pm, and subsequently posted online.
- **dlr Lexlcon Library Information Exhibit** – with project posters and a feedback station, including an Artist Chalk Installation on the window on children's floor
- **Pop-up and Youth Open House Event at dlr Lexlcon Library** – Saturday 12 October, 11 – 3pm.
- **Children's art submissions** – 'Wish You Were Here' Postcards available across 3 x libraries and local schools.

More details on these activities are provided in the following slides.

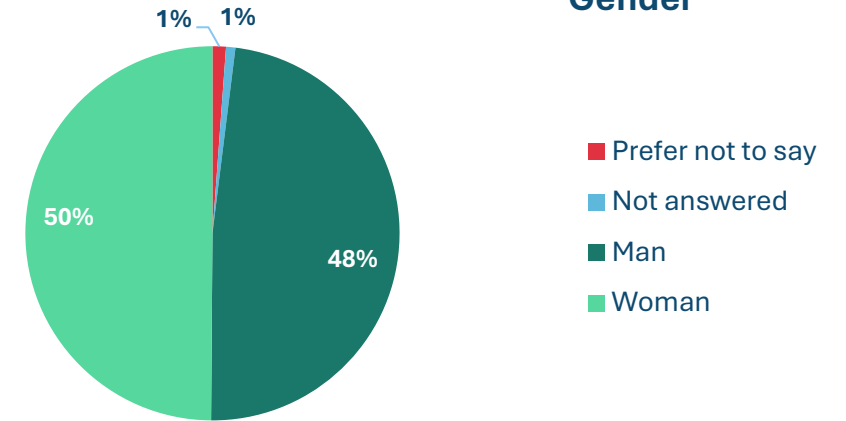


Online survey – Who responded?

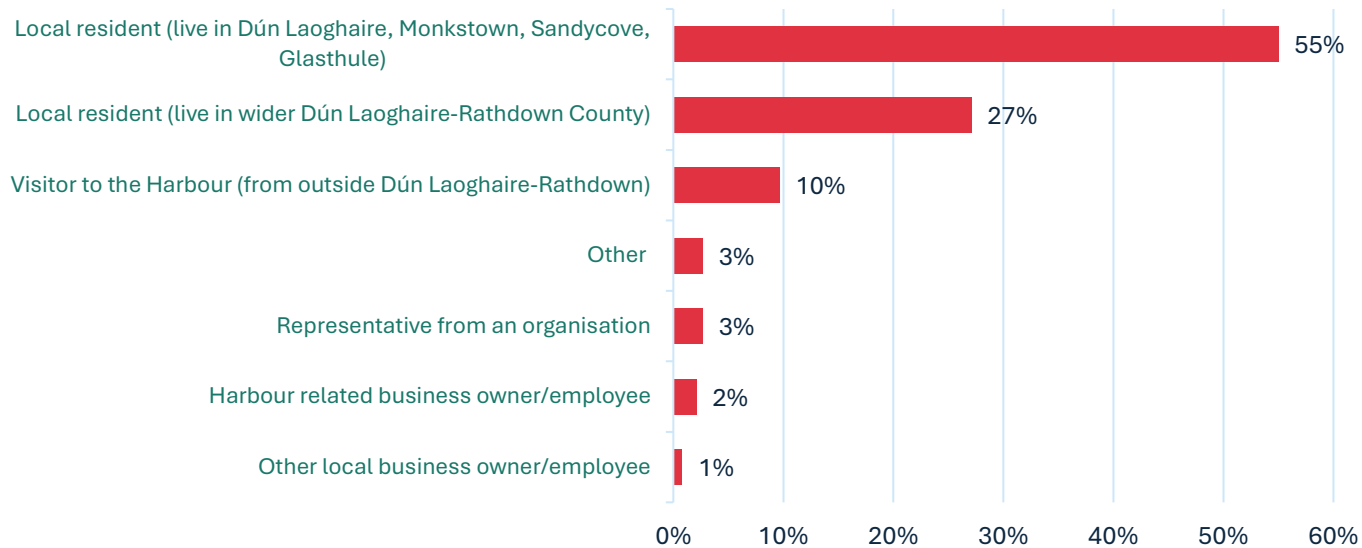
The highest volume of feedback was received through the online survey with 866 submissions sent in this way.

Over 80% of survey respondents were ‘Local Residents’, with 55% living in either Dún Laoghaire, Monkstown, Sandycove or Glasthule. Within this sample, there was an even split across gender and age. (See Appendix for a copy of this survey).

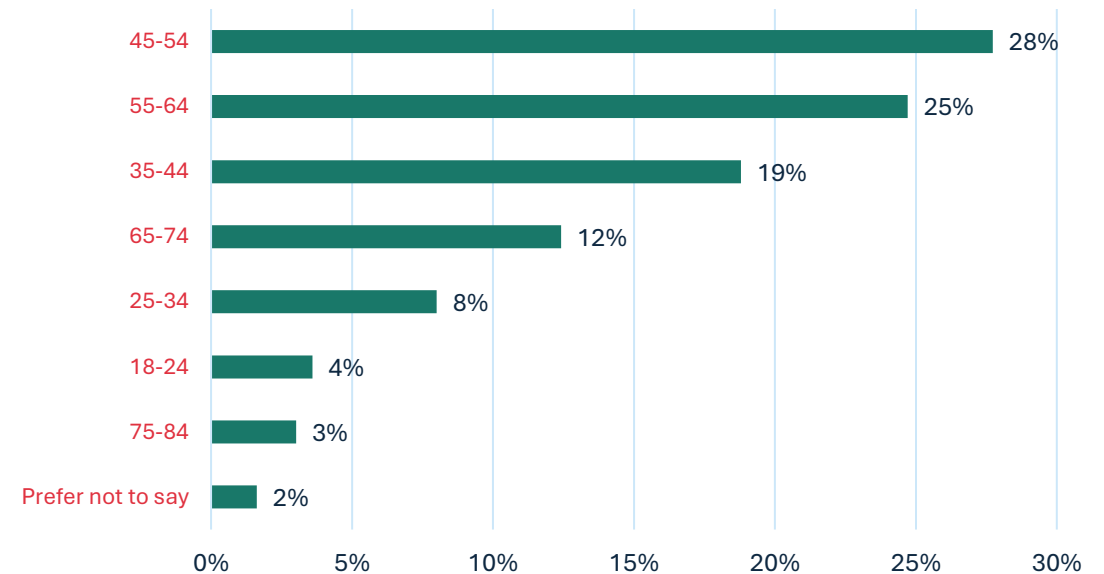
Gender



Primary Interest in the scheme



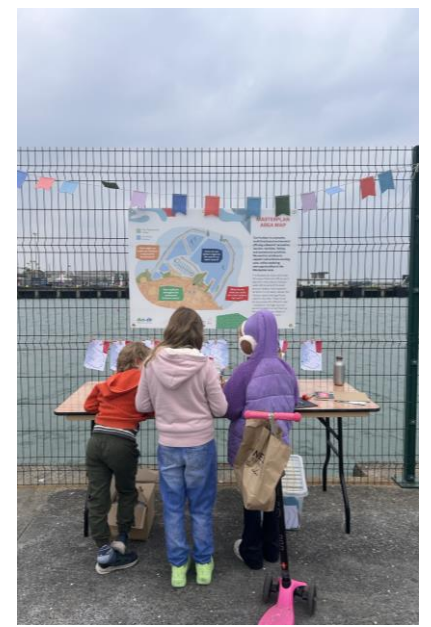
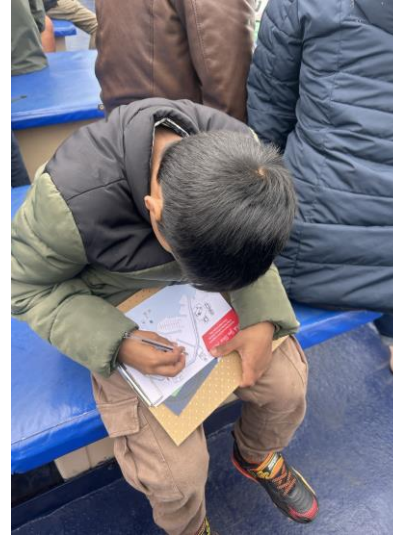
Age



Boat Tour

Saturday 21st September

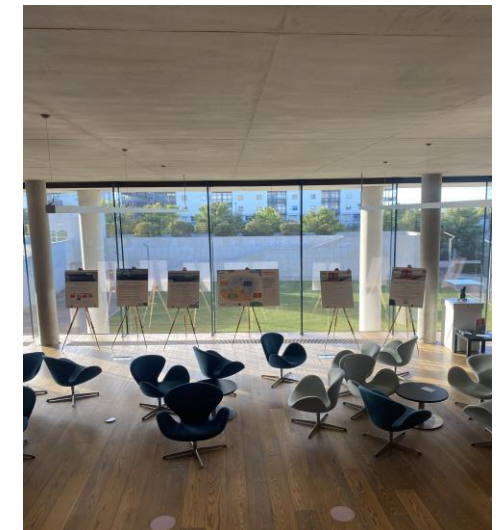
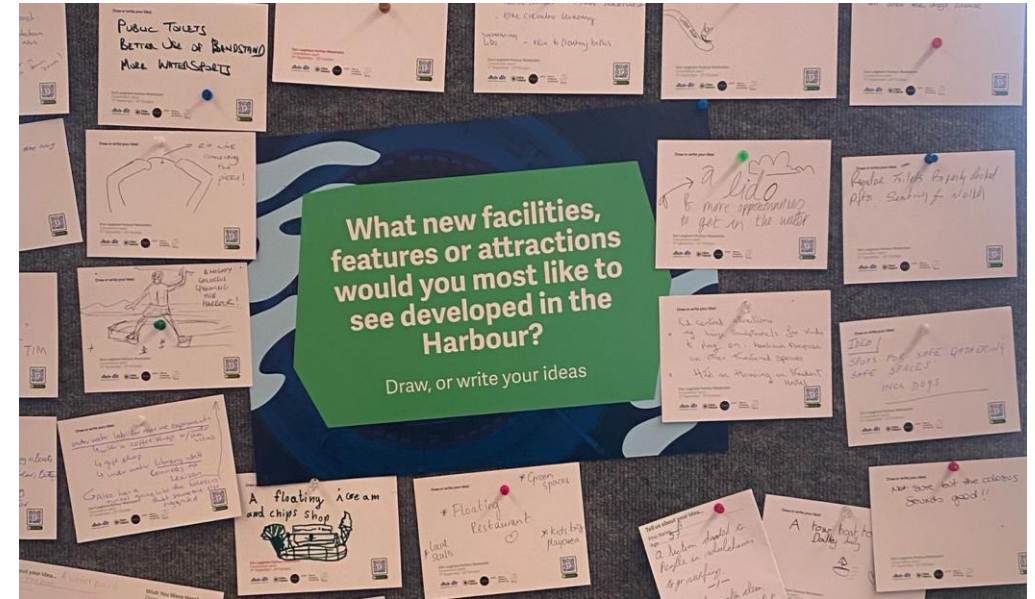
This event featured five 45-minute boat trips, all free of charge. The event was hugely popular - **500 people** registered and enjoyed a guided tour of the Harbour, learning more about its history and seeding ideas for future improvements. Additionally, an information station was set up on the pier, where the consultation team distributed leaflets and spoke with weekend pier walkers.



DLR Libraries

To facilitate involvement and provide accessible information, several initiatives were introduced across dlr libraries. **370 feedback cards** were submitted via these avenues.

- **dlr Lexlcon Library poster exhibit and feedback station** on the 1st floor of the library for the duration of the consultation period.
- **Dalkey and Blackrock Library feedback stations** located at the entrances of these libraries with posters, leaflets, adult and child feedback postcards and a drop-box.
- **Leaflets** posted to Cabinteely, Deansgrange, Dundrum, Shankill, Stillorgan libraries.
- **Pop-up and Youth Open House at dlr Lexlcon Library – Saturday 12 October, 11 – 3pm.** Members of the project team spent the day in the dlr Lexlcon during Open House Dublin festival talking to the public about the Masterplan and encouraging feedback.



Under 18s - Opportunities to Submit Ideas

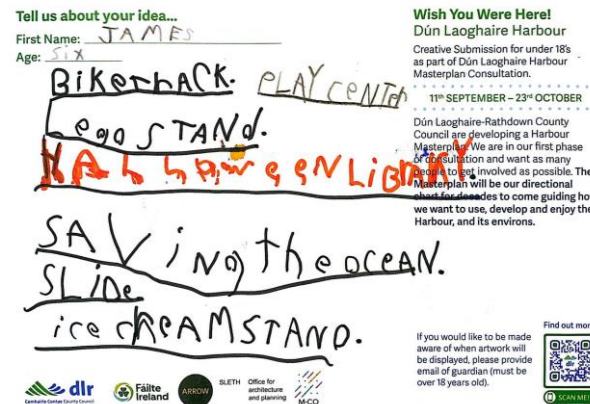
To extend engagement with children and with the community more widely, **‘Wish you Were Here’** A5 Postcards were distributed to the following locations – asking youths to imagine and draw what a future Harbour of their dreams could look like:

- **3 x local primary schools** (the Dominican School, Dún Laoghaire, the Harold Glasthule and Monkstown Educate Together). M-CO presented to a children’s assembly at the Harold, and all schools were issued supporting lesson plans.
- **Feedback stations** in dlr Lexlcon, Blackrock and Dalkey Libraries also contained the children’s postcard submissions and art supplies.

At dlr Lexlcon a Chalk Artist created a **novel window installation** promoting the consultation further on the children’s floor overlooking the Harbour, which was in place over 2 weeks.



c.270 Submissions
 170 from school groups
 100 from library stations



Key Themes from Children's Creative Submissions

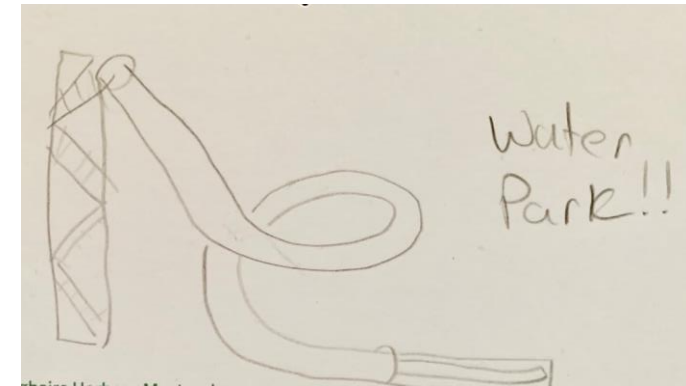
- Local children were very happy and excited to be asked for their ideas.
- 280 children created postcards and shared a range of playful and innovative ideas for the future of the Harbour.
- Five key themes emerged outlined below.



1) PLAY- include features like ziplines, slides, treasure hunts, inflatable/floating play, roller skating, seasonal ice rink, sports facilities, art walls.



2) NATURE & WILDLIFE PROTECTION



3) INCREASE ACCESS TO WATER



4) FACILITIES - like toilets, floating ice-cream shop, care for homeless, soup kitchen



5) CREATIVE INNOVATIONS & MUSEUMS

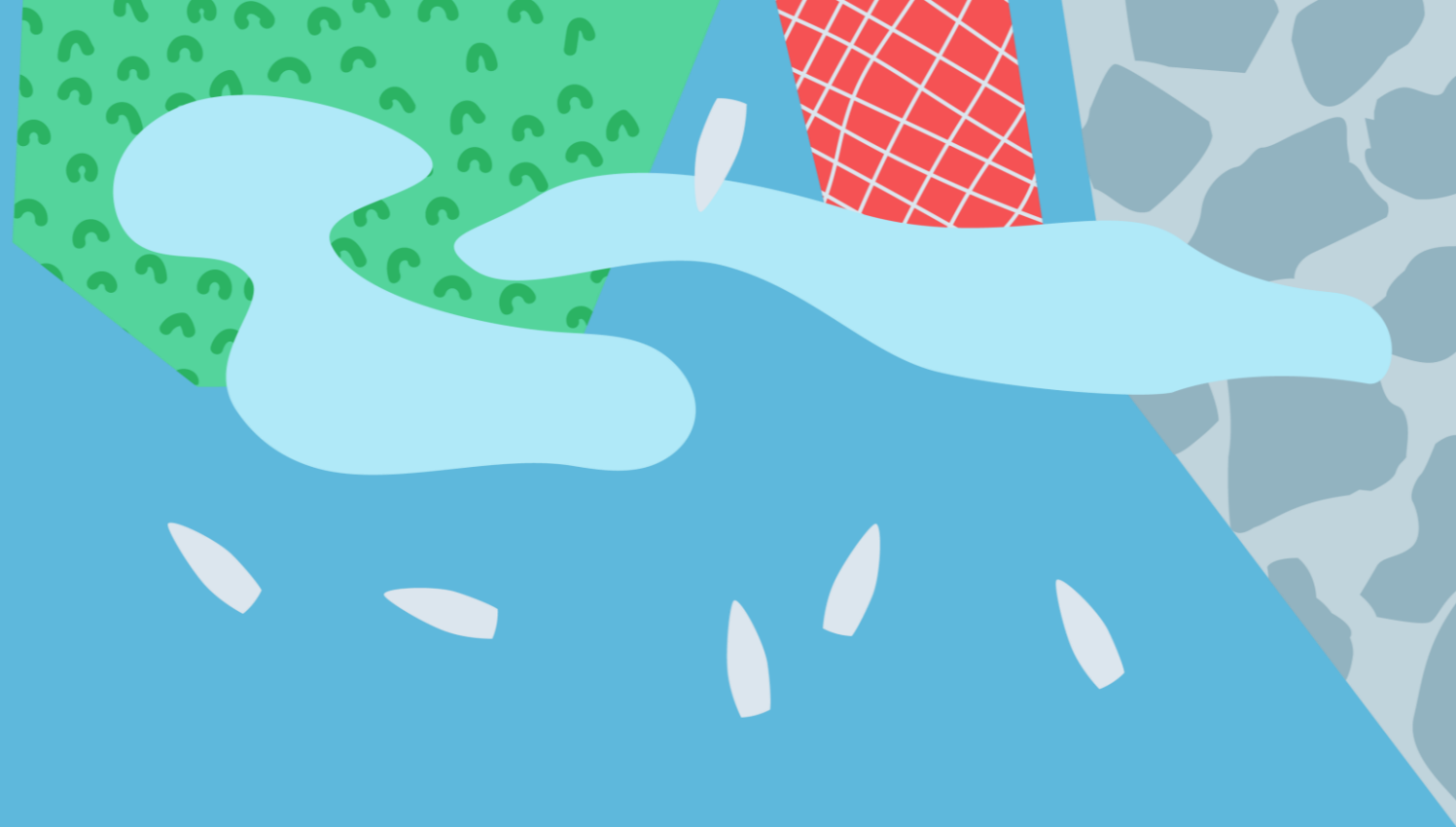
 Key Opportunity Areas

 Key Water Spaces



Children were asked to draw their ideas on a Harbour Map.

Their ideas are presented here in the most commonly suggested locations.



4. The Harbour Now -Strengths

What people like about the Harbour now

Submissions to the consultation highlighted the numerous strengths of Dún Laoghaire Harbour in its current state.

Respondents praised the Harbour's **natural beauty**, with **scenic views** of Dublin Bay and **abundant wildlife** adding to its appeal. People appreciate the **safety** and **ease of access** to **walk the piers**, where they find a sense of **peace** and a **healthy outdoor environment**. The Harbour's unique **heritage** features are valued as important connections to the past, while **the variety of watersports** available provides **active recreation options** for many. **Observing the boats** and the ongoing commercial activities in the Harbour brings **life and dynamism** to the area. Many people mentioned enjoying the **contrasting atmospheres between the East and East Piers**.

There is a strong appreciation of the Harbour as an important **public amenity**, with a **wide range of activities** that foster a **sense of identity and community**. While some submissions expressed little desire for change, most submissions recognised the immense potential the Harbour offers for future growth and development.

An important part of a Masterplan involves defining what is important about a place and how its character and quality can be protected and improved



“Spending Quality time during COVID days walking the pier with loved ones, watching the seasons change together”.

“Paddle Boarding into the sunset, orange sky with a 99 ice cream on the board. Amazing!!”

“I remember the sounds of the old fog horns in the dead of a winter's night - so comforting and reassuring”.

“My father first sailed in a Kingstown water wag in 1937. Sail in DL from then to 1998. I still sail his boat in the Harbour in 2024”.

“Walking with my Dad on the East Pier, putting the world to rights. He loved the pier – I do too”.

***“Favourite Memories”
that people shared
through the consultation***

“Pacing up and down the pier with my baby in the buggy trying to get her to sleep!”

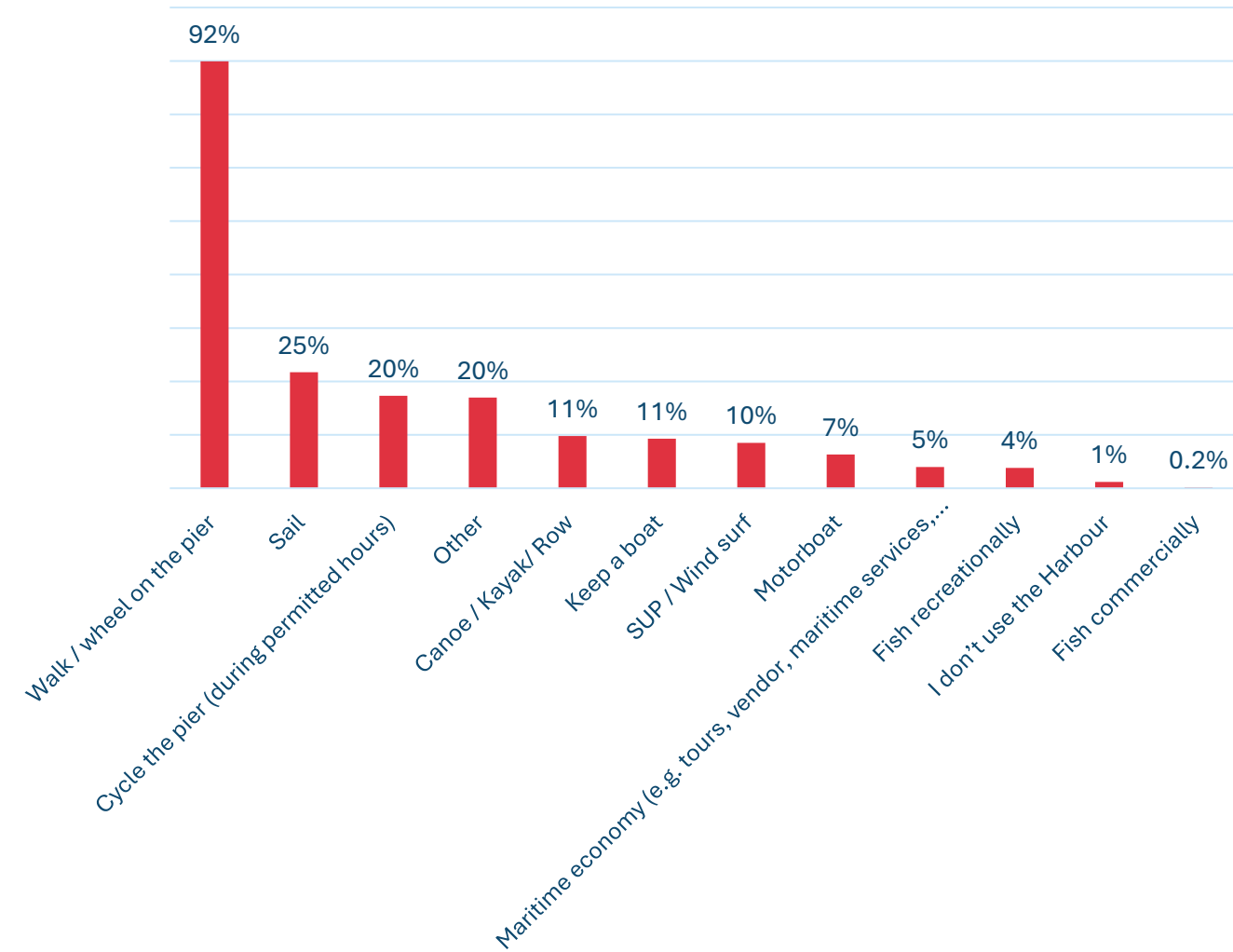
“I’m in my 70’s and this is the Harbour where my grandad courted my granny – they’d walk the sea front every Sunday before they got married in the 1890’s. I love to walk it now and think of them”.

“As a child of 14, I watched the building of the Kish bank lighthouse from the Harbour - I will never forget the crowds and applause as the kish hit the water”.

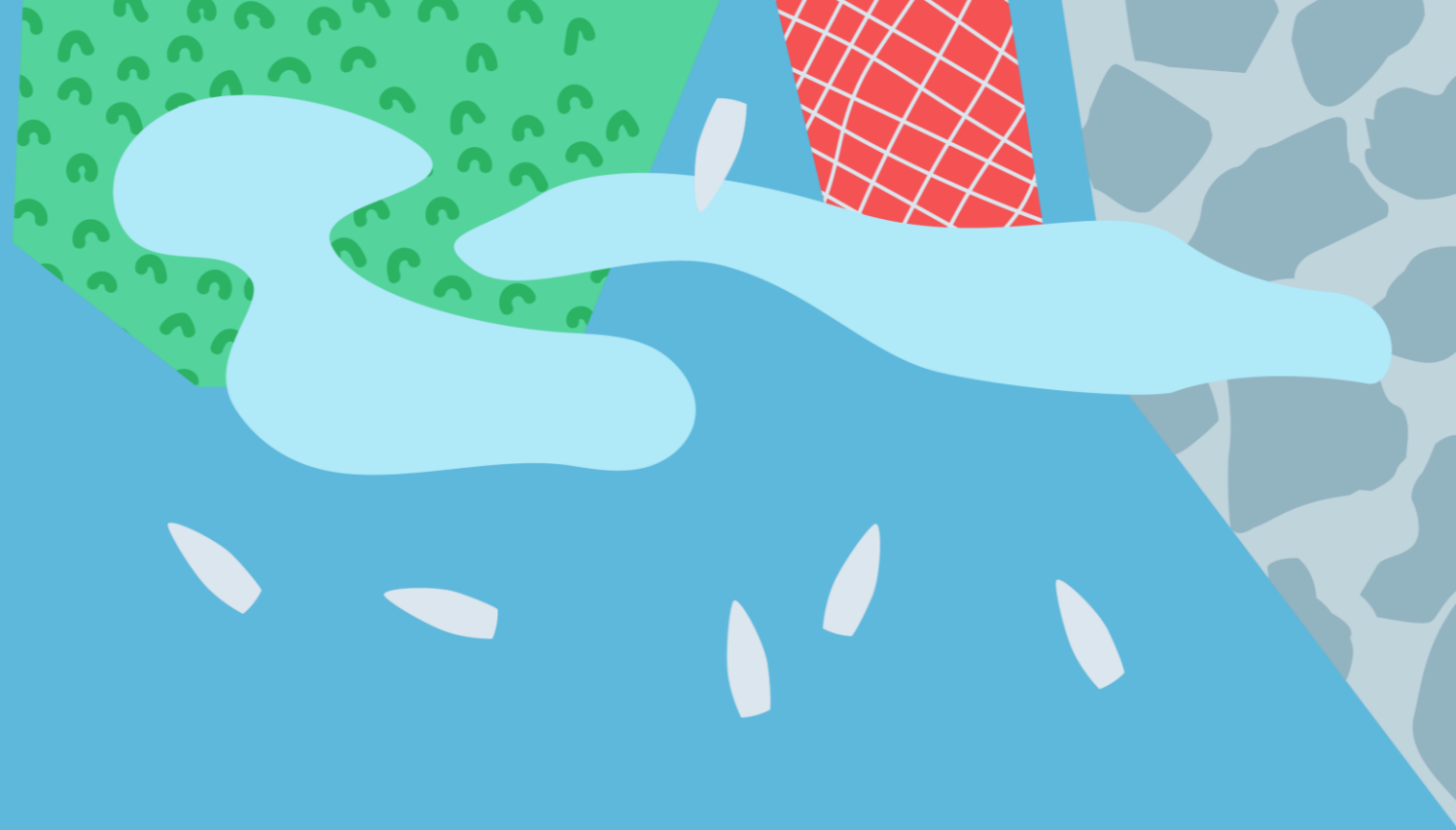
“Learning to sail in the Harbour, trying to navigate and understand how the wind is affected by the Harbour structures”.

How do people use the Harbour now?

The online survey asked how people use Dún Laoghaire Harbour, offering a range of options including water-based leisure, walking, commercial uses. Their feedback reflects the Harbour's role as a public amenity, primarily used for leisure activities such as walking, sailing, and cycling, while also supporting a community involved in water sports, maritime businesses, and recreational fishing.



- **The majority of people use the Harbour for walking or wheeling on the pier**, with **92%** (799 people) engaging in this activity, indicating it is the most popular use of the Harbour.
- **25% of survey respondents** (217 people) reported that they sail in the Harbour. This was followed by cycling on the pier during permitted hours (**20%** or 173 people).
- Less common activities include canoeing, kayaking, or rowing (**11%** or 98 people), keeping a boat (**11%** or 93 people), stand-up paddleboarding or windsurfing (**10%** or 85 people), and motorboating (**7%** or 63 people).
- The maritime economy, such as tours, vending, or equipment rental, involves **5%** (40 people), while recreational fishing is done by **4%** (38 people).
- Only a small portion of respondents, **1%** (12 people), indicated that they do not use the Harbour at all.



5. Feedback on Key Themes



Water Sports and Water Space

Water Sports and Water Space

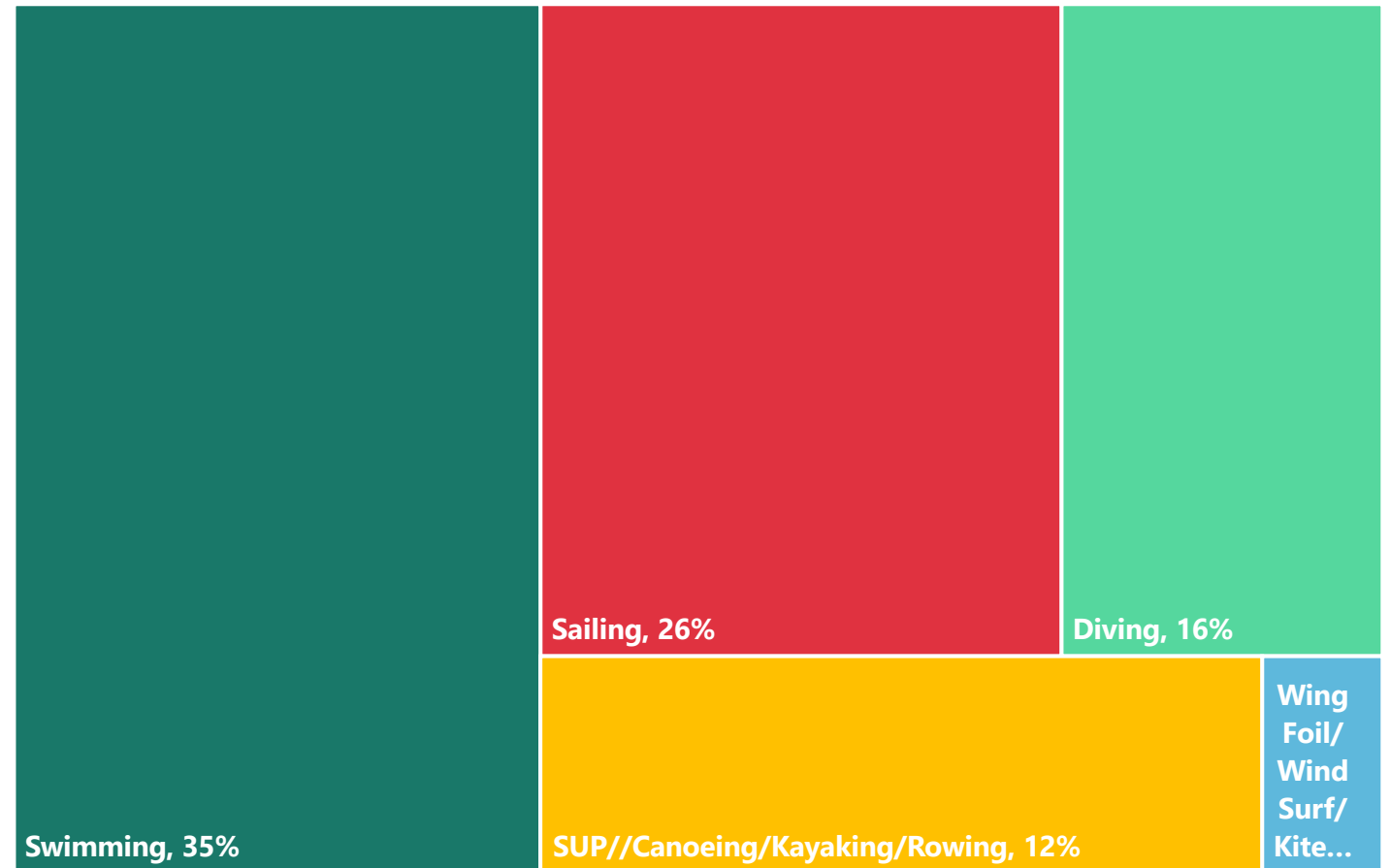
Theme mentioned in 59% of submissions

59% of submissions referenced the theme of water sports and the water space in Dún Laoghaire Harbour. These submissions are categorised into the following sub-themes:

- A. Swimming – 35%
- B. Sailing – 26%
- C. Diving – 16%
- D. SUP/Canoeing/Kayaking/Rowing – 12%
- E. Wing Foil/Wind Surf/Kite Surf – 1%

The percentages listed indicate the percentage of submissions that mentioned that theme out of the total number of submissions.

Common feedback received on these subthemes is outlined in the following pages.



Water Sports and Water Space

A. Swimming

Expand Swimming and Recreation Facilities

- Introduce a **heated outdoor tidal pool**, potentially a floating design, or a seawater **lido** and **dedicated diving platform** to offer iconic, year-round swimming and recreational options.
- Establish a **50-meter indoor pool** at the ferry terminal site, integrated into a broader sports and recreation hub with scenic views.

Designate Activity Zones

- Organise the harbour into **specific zones** for swimming, diving, and water polo to improve safety, reduce conflicts, and promote organised water-based sports.

Supporting Amenities

- Incorporate **public showers, sheltered changing areas, and a sauna**, with the

Salthill car park commonly identified as a potential location for these facilities.

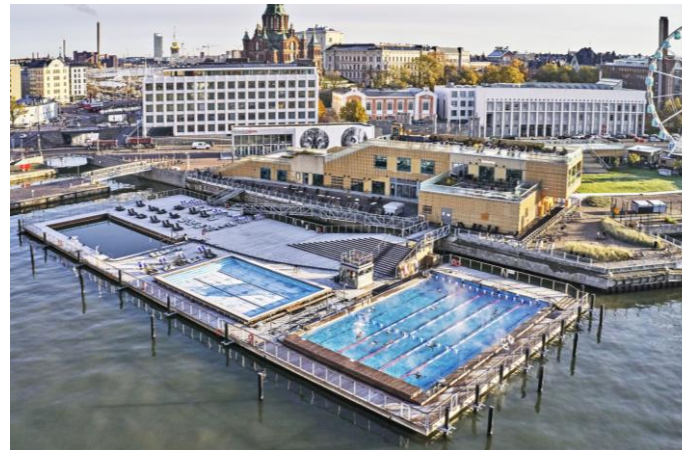
- Set up a swim shop to provide convenient access to swimwear and water sports equipment.

Enhance Accessibility and Safety

- Install public webcams to monitor key swimming and water sports areas, providing real-time updates on conditions for users.



Salthill Diving Board, Galway



Allas Sea pool, Helsinki



Belmullet Tidal Pool, Mayo

Water Sports and Water Space

B. Sailing

Water-Space and Marina Development

- Establish an affordable **municipal or public marina** to provide accessible options alongside simpler, cost-effective mooring solutions such as floating pontoons.
- Remove the old HSS Dolphins to **increase recreational water space** and create clearly marked safe **zones** for children and beginners, along with enforced speed limits and no-wake zones to enhance safety.
- Ensure water space planning considers environmental impacts.

Slipways and Water Access

- Construct **a new wide, accessible public slipway** suitable for hosting international events and improve existing slipway surfaces and gradients for safer launching.
- Enhance infrastructure with **additional pontoons, ladders** (e.g., at Coal Harbour), and public **viewing areas** for water sports and sailing events.

Facilities and Visitor Support

- Develop a **Sailing Centre of Excellence/High Performance Hub**, including a gym, meeting rooms, and accommodation.
- Provide designated **car and trailer spaces** for frequent watersports users.
- Offer visitor **accommodation** options, such as campervan parking and budget hotels, to support events.

Public Access and Club Engagement

- Encourage yacht clubs to expand public programs and increase accessibility, with one suggestion to consider consolidating the four clubs into two to free up waterfront space for public use.

Water Sports and Water Space

C. Diving

Water-space

- Create an enclosed **training pool**, possibly with treated seawater, to support dive training and provide a controlled environment for various skill levels.
- Establish **designated zones** within the harbour specifically for dive training and sea survival exercises, enhancing safety and allowing divers to train in a structured, secure area.

Facilities – on-land

- Develop a **slipway** with extended depth to facilitate safe equipment and personnel loading during low tide.
- Maintain and expand parking close to water access points for divers with heavy gear, with specific trailer parking options, to improve convenience and accessibility.
- Provide a **boat lift and boat wash area** to maintain diving vessels, with a space for gear rinsing using fresh water, rainwater harvesting, or a filtration system to reduce water wastage.

- Create a national **‘diving hub’** building with meeting spaces, classrooms, and administrative support for training programs and events.
- Provide a **dedicated compressor room** with safe access to the water, accommodating essential equipment (compressor, fill panel, storage banks) with proper ventilation and electrical support.
- Provide a **social and recreational facilities**, including a canteen, lounge, and kitchen area, to foster community engagement and support diving events.
- Establish an **organized drying area** with horizontal poles, perforated shelving, or repurposed materials like fishing nets to allow gear to drip dry efficiently.
- Provide display cabinets or a museum area to showcase diving history and equipment, contributing to the educational aspect of the diving hub.



Underwater Museum of Art, Florida



Hervey Bay Marina Slipway, Australia

Water Sports and Water Space

D. SUP/Canoeing/Kayaking/Rowing

Water-space

- Reallocate some swing mooring spaces to provide space for SUPs, kayaks, and canoes, improving accessibility and safety.
- Support the development of a **world-standard Beach Sprint Course** to attract national and international rowing events.
- Improve **access to the water at Coal Harbour** e.g. install steps or docking facilities to allow temporary mooring for easy equipment transfer and access.

Facilities – on-land

- Create **affordable rental** options for SUPs, kayaks, and canoes, along with nearby specialist watersports shops.

- Build sheltered **changing rooms, showers, and rinse areas** specifically for watersports participants.
- Provide clubs with a dedicated shed or clubhouse near a slipway for equipment storage.
- Create a **hangar for boat storage**, along with racks, to meet the storage requirements of larger equipment.
- Develop an **indoor rowing tank** facility for off-water training and a gym with capacity for up to 20 rowing machines, supporting year-round training.
- For competitions and events, invest in a timing system, competition officials' offices, and on-site catering facilities.



Radley Rowing Centre, Abingdon



Klaksvik Rowing club, Faroe Islands

Water Sports and Water Space

E. Wing Foil/Wind Surf/Kite Surf

Water-space

- Designate **areas within the Harbour** for wind surf/wing foil separate from other water sports activities.
- Reconsider **water access from Apna park**, west of the West Pier which disimproved since the skate park was built here. Previously this was a convenient location where windsurfers, wing foilers could park beside grass, unload and assemble watersports equipment.
- Access to the main **slipway at Coal Harbour should be widened** and a pontoon pier attached to existing pier similar to temporary one used during the summer.
- Consider safety of kite surfing by Seapoint with of proximity the Dart lines.

Facilities – on-land

- Provide changing and storage facilities.
- Provide Beach Marshall organization to facilitate the growth of the sport similar to busy swimming beaches with lifeguards.



Wing Foiling photographs submitted as part of the consultation

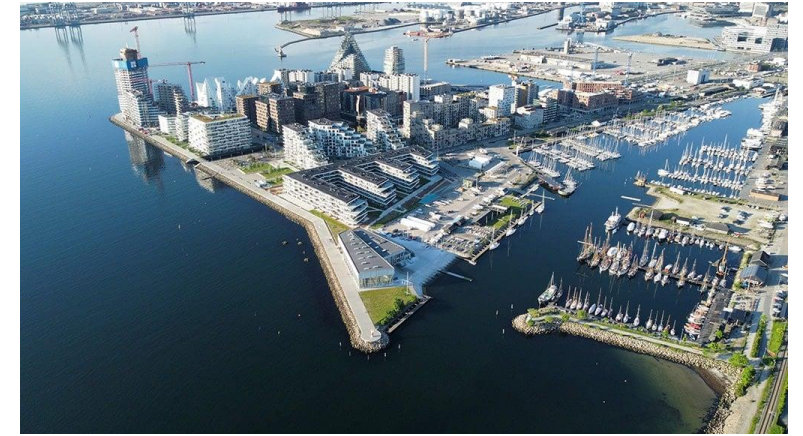
A selection of examples mentioned in submissions



Sluseholmen Harbour Bath, Copenhagen



Fastnet Marine and Outdoor Education Centre, Schull



Aarhus International Sailing Centre



Brighton Beach Watersports Hub



Weymouth and Portland National Sailing Academy

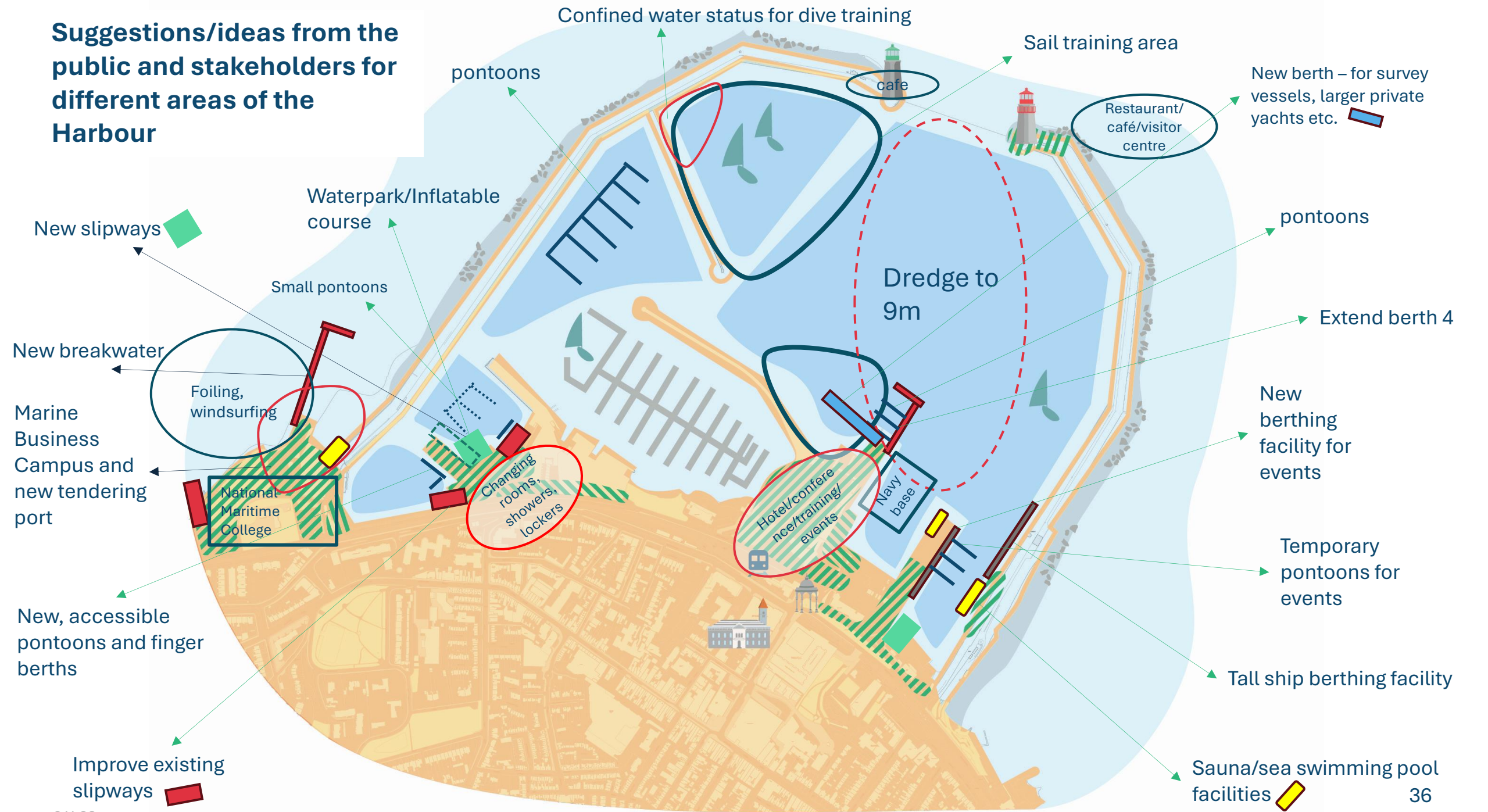


Natural High Watersports Hub, Ouddorp, Netherlands



Townsville Slipway, Australia

Suggestions/ideas from the public and stakeholders for different areas of the Harbour



Confined water status for dive training

Sail training area

New berth – for survey vessels, larger private yachts etc.

Restaurant/café/visitor centre

cafe

pontoons

pontoons

Dredge to 9m

Extend berth 4

New berthing facility for events

Temporary pontoons for events

Tall ship berthing facility

Sauna/sea swimming pool facilities

Waterpark/Inflatable course

Small pontoons

Foiling, windsurfing

Changing rooms, showers, lockers

Hotel/conference/training/events

Navy base

National Maritime College

New slipways

New breakwater

Marine Business Campus and new tendering port

New, accessible pontoons and finger berths

Improve existing slipways



New Development
Opportunities and Services

New Development Opportunities and Services

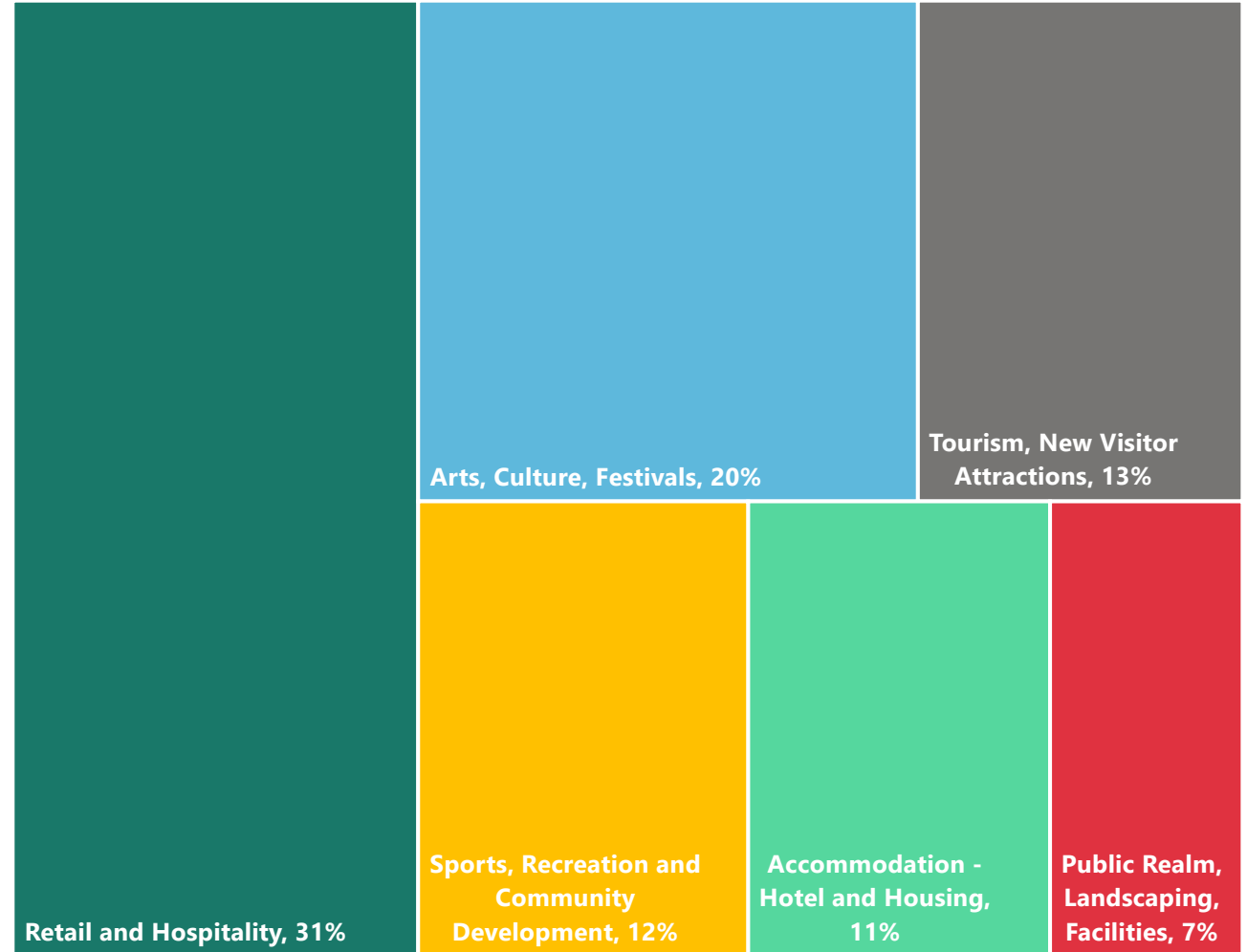
Theme mentioned in 56% of submissions

56% of submissions referenced the theme new development opportunities and services in Dún Laoghaire Harbour. These submissions could be categorised into the following sub-themes in order of importance:

- A. Retail and Hospitality, 31%
- B. Arts, Culture, Festivals, 20%
- C. Tourism, New Visitor Attractions, 13%
- D. Sports, Recreation and Community Development, 12%
- E. Accommodation – Hotel and Housing, 11%
- F. Public Realm, Landscaping, Facilities, 7%

The percentages listed indicate the percentage of submissions that mentioned that theme out of the total number of submissions.

Common feedback related to these subthemes is outlined in the following pages.



New Development Opportunities and Services

A. Retail and Hospitality

Expanded Dining and Hospitality Options

- Introduce a mix of **waterfront restaurants, bars, and cafés**, with provisions for outdoor dining suitable for all weather and seasons.
- Encourage a **balance** between high-end restaurants, smaller community cafes, and establishments that focus on Irish, healthy, and locally sourced food. Provide canteen facilities to support large events or summer camps.

Markets and Food Hubs

- Introduce food and craft markets, such as **weekly farmers markets, seasonal events, and small festivals**, with semi-permanent structures to host these activities.
- Create a **seafood hub** featuring fishing and angling equipment, fresh fish markets, fish shops, and marine food stalls.
- Provide for food trucks powered sustainably (not diesel generators) in locations that avoid congestion.

Unique and Creative Spaces

- **Convert heritage structures** (e.g., lighthouses) into cafes, restaurants, or tourist shops, and explore the development of unique concepts like underwater or floating restaurants.
- Support **pop-up enterprises** and seasonal markets through council-supported incubators and flexible semi-permanent spaces.

Retail and Leisure Enhancements

- Prioritise local shops including watersports shops selling equipment and clothing.
- Regenerate Dún Laoghaire town before adding more retail spaces to the Harbour.

Nightlife and Social Spaces

- Encourage a mix of **day and night-time establishments**, including breweries, beer gardens, and venues for community and cultural activities.



Underwater Restaurant, Lindesnes, Norway



Torvehallerne indoor food market, Copenhagen

New Development Opportunities and Services

B. Arts, Culture, Festivals

- Install a **pontoon floating in the centre of the Harbour** (for firework displays, or as a floating concert venue).
- Create a large-scale **events centre** or areas that could include the following; exhibition spaces, artist studios, small amphitheatres, outdoor cinema, performing arts space, murals, sculptures, water features, decorative fountains, graffiti walls, outdoor arena for concerts and festivals, rehearsal spaces for small bands/musicians, spaces for art workshops, a nightclub.
- Use **pier walls to showcase art**, such as IADT grad show student work.
- Create **'meanwhile use'** with shipping container parks/temporary use spaces for pop-ups.
- Provide for street performers to animate the space.
- Ensure any large-scale events planned for the Harbour are designed and planned with residents' comfort and safety in mind.



Little Island, NY



Chicago Millennium Park



HORST music and arts festival, Belgium

New Development Opportunities and Services

C. New Tourism / Visitor Attractions

Unique Experiences and Activities

- Introduce **interactive experiences and thrill sports** such as zipline experiences, glass-bottom boat tours, floating obstacle courses, inflatable water parks, and cable splash zones.
- Establish **pier jumping and diving platforms**, similar to Salthill in Galway, and host competitions like remote-controlled model powerboat racing.

Cultural and Educational Spaces

- Develop **centres** such as a Marine Interpretive Centre, an Irish Diaspora & Deportation Heritage Centre, and a UNESCO Biosphere visitor and volunteer centre. Open a branch of the Maritime College on the West Pier to promote maritime education and excellence.
- Convert a decommissioned **naval ship or tall ship into a historical attraction**

- Develop an **aquarium**, observatory or other innovative spaces like an underwater art museum.

Events and Entertainment

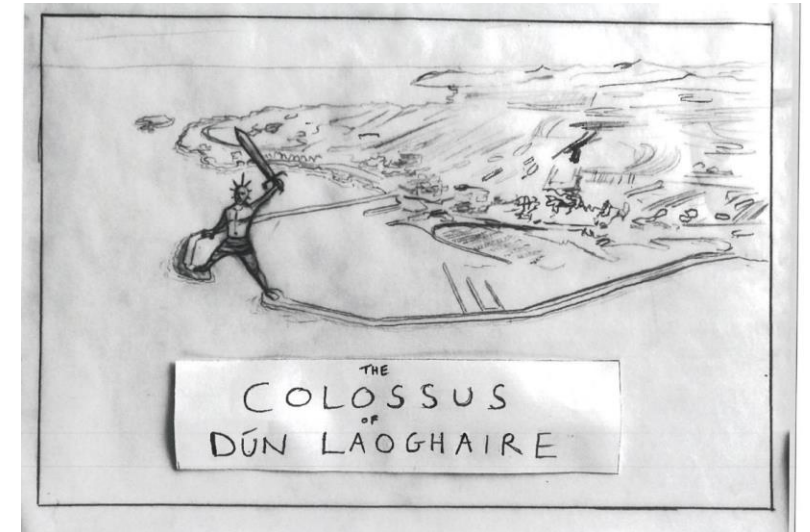
- Develop **flexible spaces for events**, including floating or hologram concerts, a floating pub, a mini brewery in repurposed shipping containers, and a local market.

Architectural and Visionary Features

- Introduce **bold architectural landmarks**, such as glass-enclosed **viewing pods**, observatories, interactive structures like the Oslo Opera House, and **cable cars** along the shore.
- Highlight local history through projects such as a memorial wall, connecting the story of construction of the piers to Dalkey Quarry along the metals. Include a walk of fame honoring local heroes.

Balancing Tourism and Local Needs:

- Ensure the Harbour remains accessible and functional for local residents by prioritising high-quality public amenities over excessive commercialisation.



Idea submitted through public consultation for Colossus of Dún Laoghaire statue

A selection of examples mentioned in submissions



Bungee jump and Zipline at De Pier, The Hague



Oslo Opera House



Bath Christmas Market



Mauerpark public stage, Berlin



Hawke's Bay Multi-Use Velodrome, Napier, New Zealand



Floating Stage, Bregenz Festival, Austria

New Development Opportunities and Services

D. Sports, Recreation and Community Development

Health and Wellness

- Provide an **indoor community sports facility with a gym**.
- Introduce a dedicated **sports rehabilitation** area will include **a sauna, sea plunge pools, and steam rooms**, alongside traditional seaweed baths and spa facilities.

Sports Courts & Fields:

- Build a **multi-sport stadium** in the ferry terminal space (usable by GAA, rugby, and soccer) with a natural grass/astroturf surface, floodlighting, seating, and an Athletics track. Consider a small sports stadium for community events.
- Provide Basketball **courts** (3v3) and additional basketball hoops, volleyball courts, pickleball and padel courts. Introduce **floating sports courts** (e.g., floating football and tennis courts).

- Build the National **Velodrome** in the Harbour (multi-use facility).
- Other recreational spaces suggested include a dog park, a birdwatching hide, designated spaces for recreational fishing, chess seats and a table tennis tables, outdoor gym equipment and open spaces for outdoor fitness classes, yoga, and meditation.
- Maintain **open green spaces** for community events and flexible use.

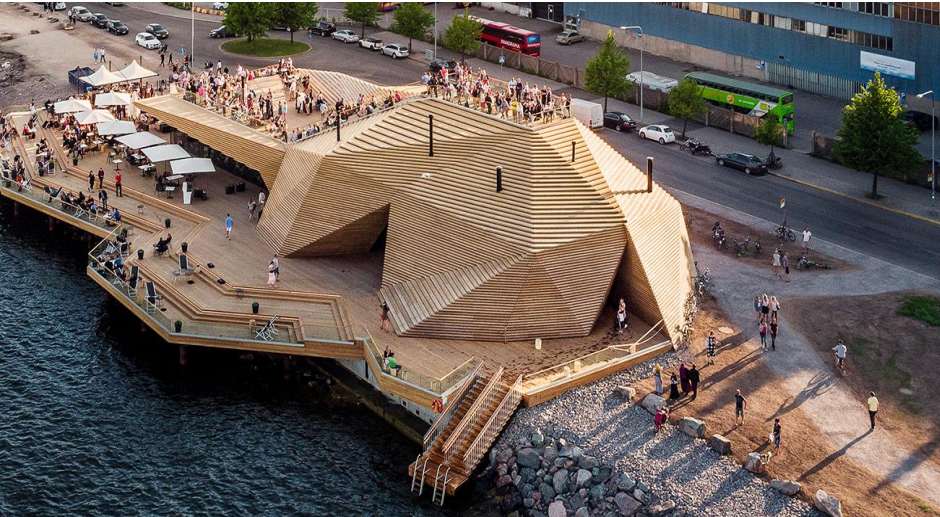
Adventure & Extreme Sports:

- Include facilities for **older children** such as; a large **skate park** with lighting for use in winter, a **climbing wall, a pump track/BMX track** with jumps for teenagers and older children, trampolines with bungee cords, roller rinks and ice rinks, dedicated teen spaces.

Youth and Community

- Establish a **Youth Club** and Community Centre.
- Build **shared work-spaces**.
- Set up **community gardens and local innovation hubs** (circular economy, green transitions, craft and design, maritime).

A selection of examples mentioned in submissions



Loyly Public Sauna, Helsinki



Sheltered Playground, Regnlekplatsen, Sweden



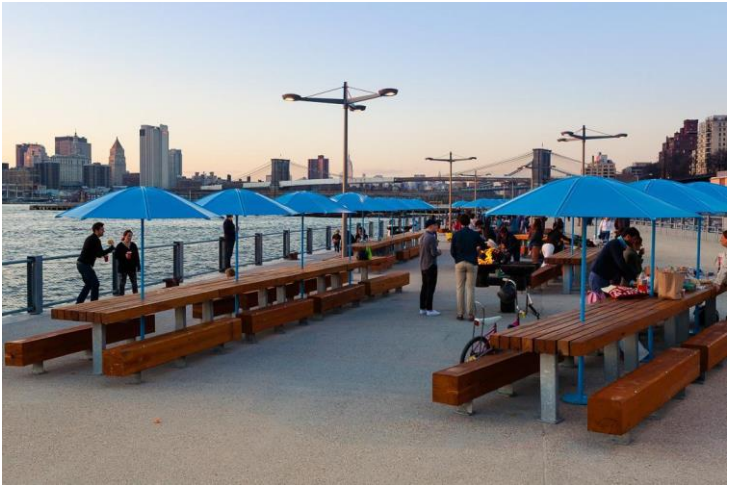
Superkilen urban park, Copenhagen



Royal Observatory Greenwich



Floating Basketball Court, London



Picnic and BBQ Area, Brooklyn Bridge Park, New York

New Development Opportunities and Services

E. Accommodation – Hotel and Housing

Neighborhood Design and Housing

- **Reclaim land** around the West Pier to establish a new waterside neighbourhood, incorporating a **floating community with houseboats** for unique residential and tourism opportunities.
- Develop mixed-use housing that includes **affordable and council-owned** options, alongside self-catering and age-friendly accommodations.

Visitor Accommodation

- Provide **affordable hotel and hostel accommodation**, as well as campervan and motorhome parking.
- Include a mix of high-end and budget-friendly accommodation to ensure inclusivity.

Architectural Sensitivity

- Ensure all housing and hotel developments are aesthetically sensitive to the historic architectural setting avoiding high-rise buildings that could disrupt views of Dublin Bay or the area's historic character.

Community-Focused Development

- In developing public spaces, protect community facilities from being compromised by private commercial interests or overdevelopment.
- Prioritise social enterprises, public amenities, and sustainable development over purely commercial projects to maintain the Harbour's community-oriented character.



Schoonship floating neighbourhood, Amsterdam



Mixed use development, Copenhagen Port

New Development Opportunities and Services

F. Public Realm, Landscaping, Facilities

Public facilities and toilets

- Provide well-maintained, accessible public **toilets**, and refurbish the public toilets at the start of the East Pier.
- Add more **seating** along the piers and in sunny locations, include water refill points, more bins, and picnic areas.
- Consider a **lighting plan** for the area and the pier including fairy lights, and considering environmental impacts.

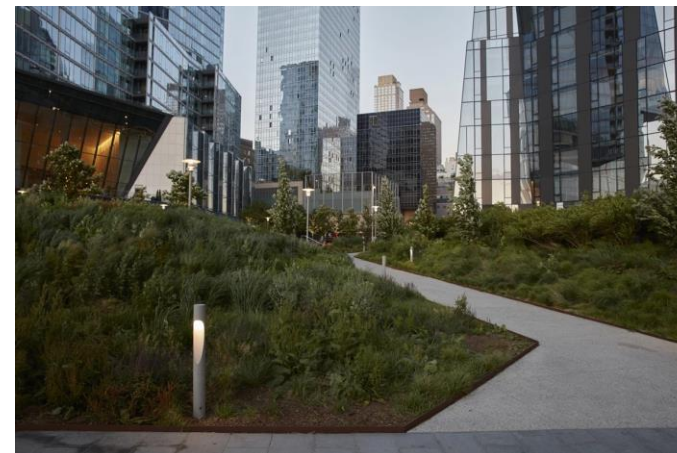
West Pier Preservation & Landscaping

- Preserve the West Pier's historic features, such as rail tracks and moorings and maintain its 'wilder' character. Some submissions called for accessible paving and lighting on the West pier.

Design and landscaping

- Create a coherent design language across public, private, and commercial spaces with clear wayfinding, attractive signage, and minimal commercial advertising. Develop 'Dún Laoghaire' branding to draw attention to any new attractions.
- Sensitively link the East and West Piers with **a continuous shoreline development**, incorporating boardwalks, bridges, civic landscaping, and open public spaces.

- Level out/tier the area between the Pavilion Development and waterfront boardwalk, from People's Park to Seapoint.
- Cover the DART line from Glenageary to Seapoint, adding new public space and improving linkages.
- Build a **ship-wreck or marine nature themed playgrounds** with shelters for year-round use. Incorporate interactive fountains and playful landscape elements.
- Provide a family-friendly **playground** overlooking the water with facilities such as picnic benches, public toilets, scooter/bike parking. Introduce a **natural play area** in "The Gut" and grassy playground area between the yacht club and Irish Lights. Designate areas for dog-friendly spaces along the piers.



Waterline Square Park,
New York

A selection of examples mentioned in submissions



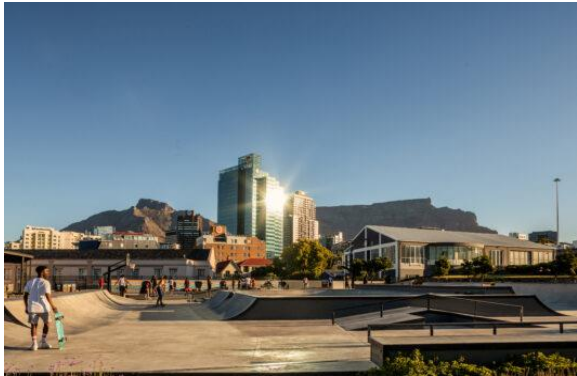
Hudson River Park, Pier 45



Hudson River Park, Pier 45



Park'n'play Rooftop, Copenhagen



Canal District Skate Park, V&A Waterfront, Cape Town



Aker Brygge, Oslo



Water Steps, Pittsburgh



Reffen Street food market, Copenhagen



Granville Island, Vancouver



Movement, Connections,
Mobility, Universal Access

Movement, Connections, Mobility, Universal Access

Theme mentioned in 54% submissions

54% of submissions mentioned movement, connections, mobility and universal access. Common feedback included:

Active Travel- walking and cycling

- Develop **continuous, protected bike lanes and pedestrian paths** connecting the East Pier to the West Pier (some submissions noted this could be termed a 'health trail'). A **walkway** could be created on the outside of the pier walls. Further connections could be created with the Metals cycle route, and a boardwalk could be created linking Sandycove all the way to Blackrock.
- **Reopen the crossing point over the railway line** at the West Pier, add a **greenway link** under the West Pier bridge.
- Add a plaza in front of The Bike Hub to encourage community interaction and activity.
- Introduce **secure bike lock stations**, accessible **bike access** to the East Pier, and a **bike rental scheme**.

- Create a safe cycling track for beginners (e.g., in the Gut) and provide a segregated cycling track to promote safe cycling on piers.
- **Widen footpaths** and introduce **safety barriers** in high-traffic areas (e.g. West Pier-Harbour Road connection).
- Ensure **universal design standards** across the area – particular mention to the need for better access and conditions for pedestrians around the Gut and the West Pier.

Public Transport

- Create a dedicated **drop-off zone** at the DART station.
- Enhance **public transport connections** and **wayfinding** to stations and bus stops.



Parque Urbano da Orla do Guaíba, Port Alegre, Brazil



Floating boardwalk, Drumshanbo, Leitrim

Movement, Connections, Mobility, Universal Access cont.

Connections/linkages

- Piers could be connected with a **ferry/tender link, skywalk, bridge, or underwater tunnel.**
- Provide accessible mobility options such as a **small train or golf buggy service** along the pier and install **floating pontoons with viewing platforms.**

Parking & vehicles

- Widen Harbour Road from Coal Harbour to West Pier/The Gut for two-way vehicular traffic and better pedestrian movement.
- **Access to the West Pier should be improved** from the carpark at Salthill along the seafront
- Some submissions called to **maintain vehicle access and parking**, particularly for elderly people, disabled people, and watersports users with heavy equipment and boat trailers. Suggestions were

received to reduce the cost of car parking, provide year-round parking permits instead of pay-as-you-go, and for a park and ride facility for commuters.

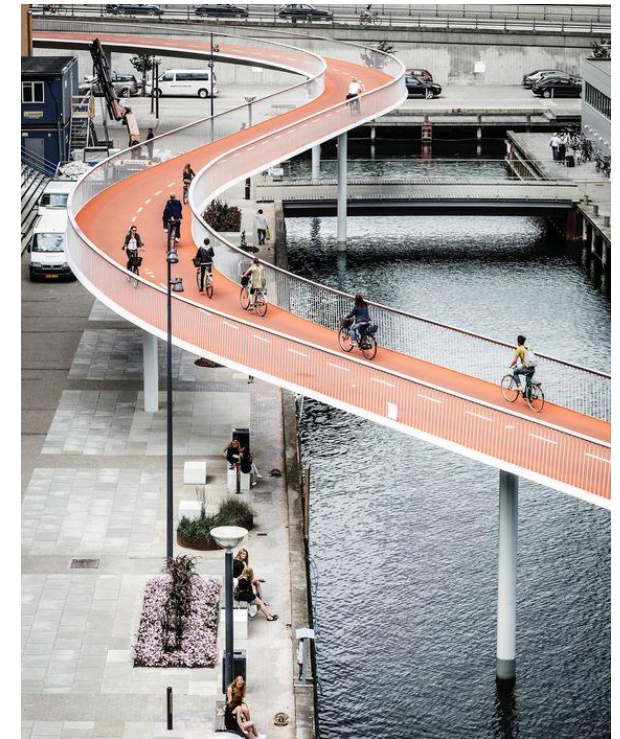
- Others called for the reduction in overall parking in favor of plazas, green spaces and leisure areas, and the closure of Harbour Road to West Pier/Gut area to reduce vehicle traffic.

Water travel

- Reintroduce **ferry services to the UK** with fast electric ferries, positioning the harbour as a hub for foot-passenger ferry travel for the slower, greener travel option of ‘sail and rail’.
- Establish frequent **commuter ferries** between Dún Laoghaire, Dublin City Centre, and Howth, with potential for special event sailings.
- Include novel transport options like a water taxi depot, and hydrofoil bike rentals

Other

- Introduce delivery lockers for post/packages collection.
- Implement wayfinding improvements and enhanced signage, especially for the West Pier.



Cycleslangen, Copenhagen

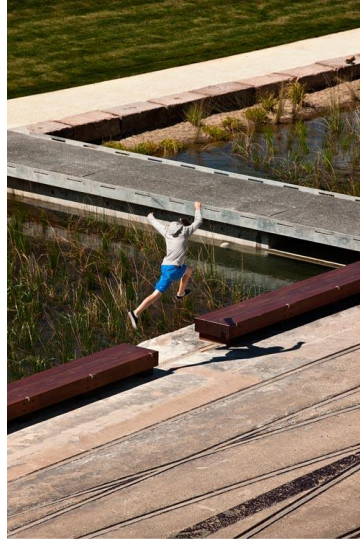
A selection of examples mentioned in submissions



Kalvebod Bolge, Copenhagen



Circle Bridge, Copenhagen



Auckland Waterfront, Harbour Promenade, New Zealand



Marine Industries, Business and Commercial Operations

Marine Industries, Business and Commercial Operations

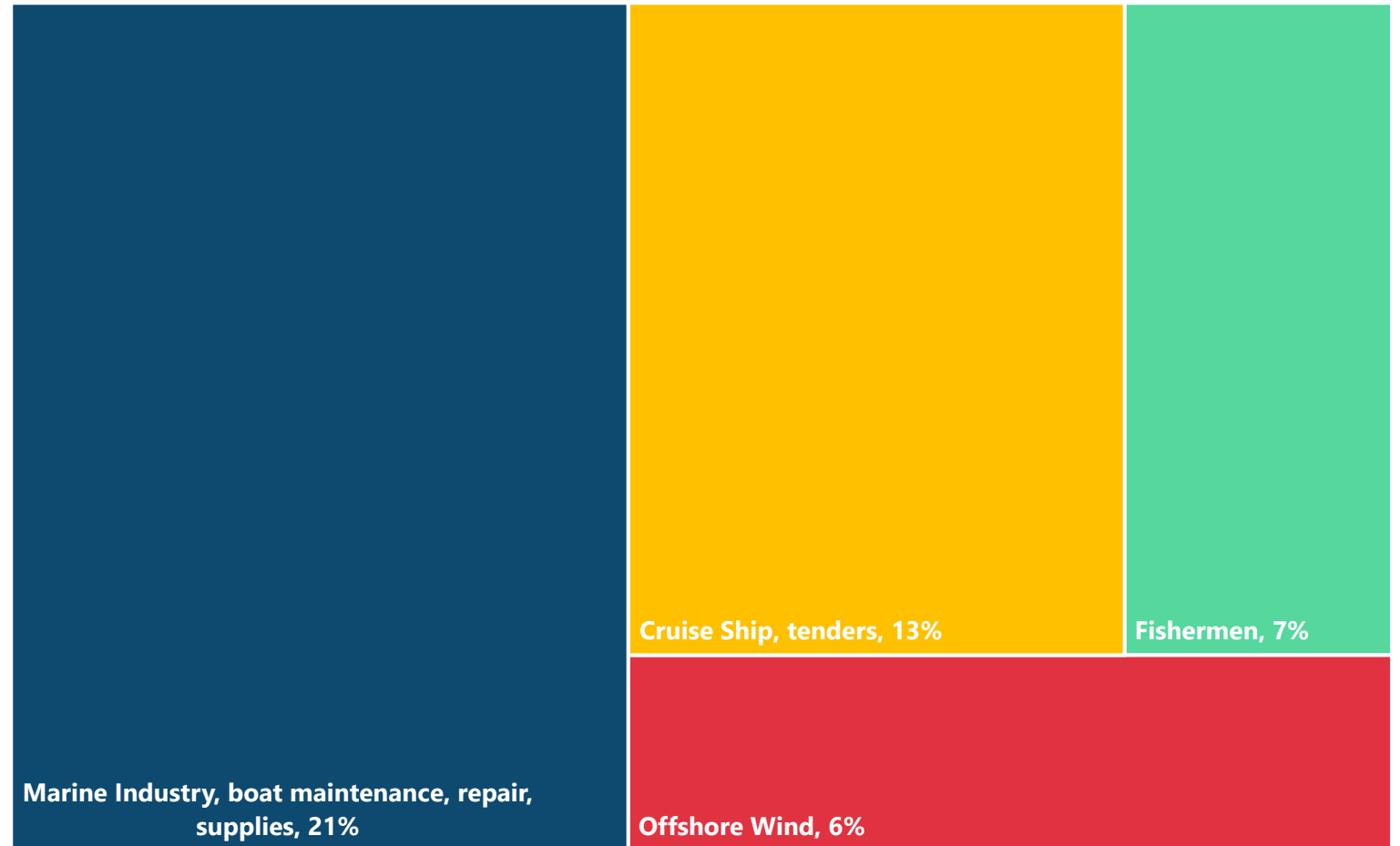
Theme mentioned in 32% of submissions

32% of submissions referenced the theme marine industries, business and commercial operations in Dun Laoghaire Harbour. These submissions could be categorized into the following sub-themes:

- A. Marine Industry, boat maintenance, commercial operations, 21%
- B. Cruise ships, tenders, 13%
- C. Commercial Fishermen, 7%
- D. Offshore Wind and Renewables, 6%

The percentages listed indicate the percentage of submissions that mentioned that theme out of the total number of submissions.

Common feedback related to these subthemes is outlined in the following pages.



Marine Industries, Business and Commercial Operations

A. Marine Industry, boat maintenance, supplies, repairs

Harbour as a Working and Recreational Hub

- Maintain Dún Laoghaire Harbour as both a **working and a recreational Harbour**, providing berthing for larger boats and tall ships.
- A suggestion to assess the implications of the EU core port designation within the Greater Dublin Area port cluster, confirming that it is unsuitable for handling commercial traffic (other than cruise ships and offshore wind farm support).

Marine Business Support and Facilities

- Plan for **new models of sailing/boating, including rental services** and electrification of boats.
- Provide space for **training** (e.g., boatbuilding, maintenance, design, and storage, including heated, dry space for wooden boat building). Foster **traditional boatbuilding** and workshops for maintenance, such as the Hobbler and other artisans supporting boats and sailing.
- Marine services, like boatbuilding, maintenance, repairs, marine engineering, rigging, and chandlery could be clustered in a **designated area (such as The Gut) for services**. Proximity to leisure activities can be important for some of these services.

Sustainable Marine and Tourism Development

- Create a cluster of **sustainable marine activities**, including sailmaking, buoy making/repair, diesel engine maintenance, and liquid hydrogen storage.
- "Square off" the end of Carlisle Pier to create space for commercial shipping and tugboat lay-ons, adding another berth.



Dry Stack Boat Storage, Lake Allatoona, Georgia, USA

Marine Industries, Business and Commercial Operations

B. Cruise Ships, Tenders

Cruise Operations & Infrastructure

- Most submissions did not express a desire for expansion of cruise ship activity but felt that more efforts should be made to attract existing visitors into Dún Laoghaire. A limited number of comments called to reconsider the construction of a cruise berth, and to support the expansion of cruise operations in Dún Laoghaire.
- Support the growth of “the turnaround sector” connected to the cruise business, including the provision of more accommodation.
- Limit cruise ship docking to a maximum of 100m length, with only one commercial berth at the extended Berth #4 instead of the current four.

Shore Excursions & Visitor Experience

- Enhance **shore excursion offerings** on cruise ship days, including local shops, cafes, artists, and food suppliers in the port area to sell directly to overseas visitors.
- Recognise Dún Laoghaire Harbour as a key gateway and access point to the county, leveraging its good transport links (train and bus) for visitor benefit, along with promoting connections to Dublin Airport.

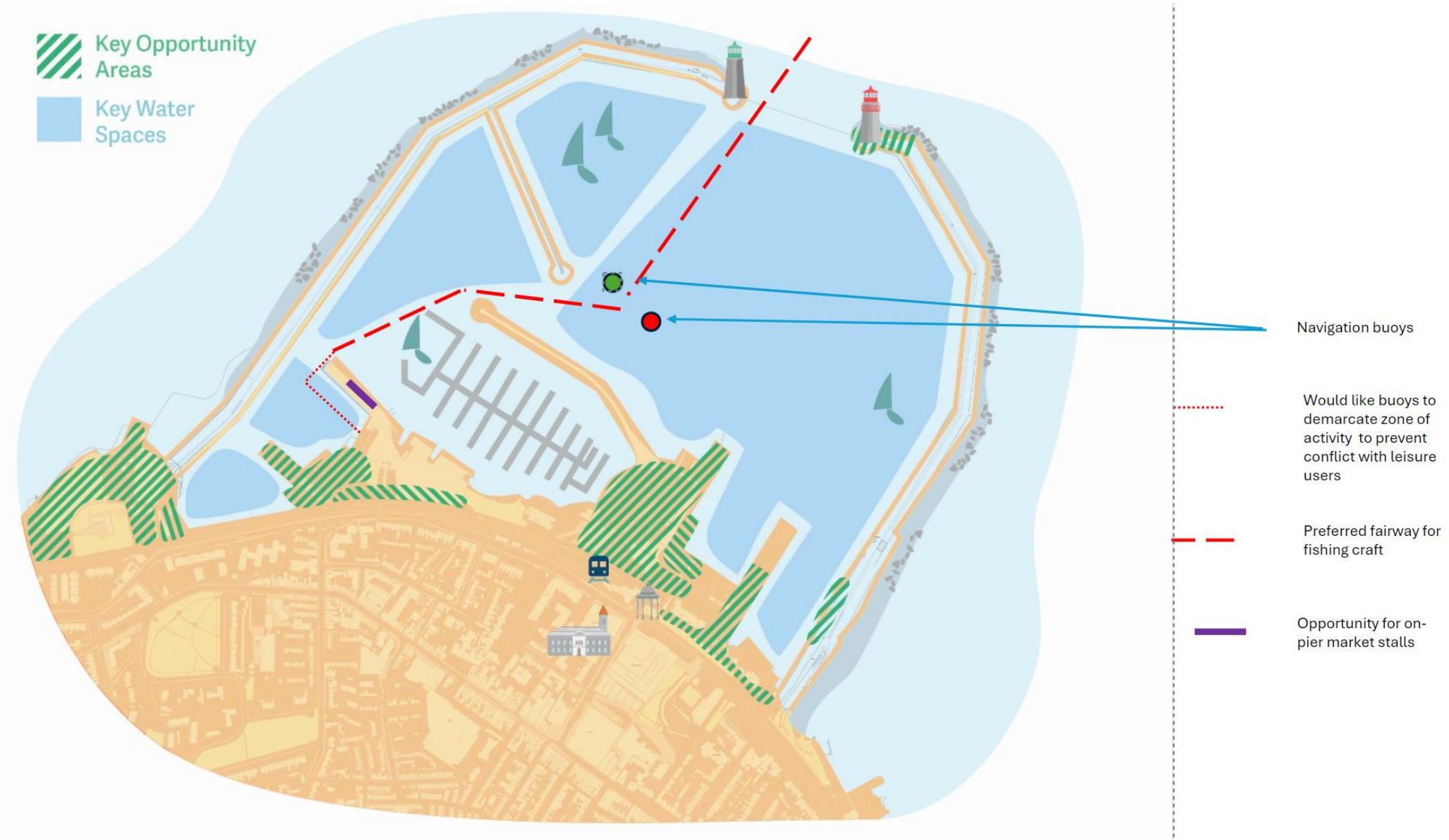
- Provide **flexible coach parking** and establish tendering **shuttles** to a new **tendering port outside the Harbour at The Gut**, with a visitor center, tour bus parking, and widened two-way road access.

Tourism & Maritime Attractions

- Consolidate tourist attractions such as Dublin Bay Cruises, Dublin Boat Tour in one location by the East Pier (and near key attractions such Lexicon Library, Maritime Museum, and redeveloped baths site), possibly with a dedicated pontoon at the East Pier.
- Build a pier off the East breakwater (Berth No. 5) for deeper shipping, Crew Transfer Vessels (CTVs), and private yachts.

Marine Industries, Business and Commercial Operations

C. Fishermen



Marine Industries, Business and Commercial Operations

D. Offshore Wind & Renewables

- Some calls to support development of the planned new wind farms on the East Coast, while others wondered about its suitability and how/if the Harbour Masterplan should facilitate these activities.
- Develop a **Renewable Marine Energy Innovation Hub** which could explore marine-based renewable energy solutions such as tidal and wave power.
- Other specific electricity suggestions include; Onshore Power Supply, Shore Connection, Shore-to-ship Power, Cold ironing, Alternative Maritime Power to reduce greenhouse gases, a cleaner maritime environment and reduce operational costs.
- Develop a maritime services zone with extended berth #4 for relocated RNLI, Irish Lights vessel, Wind farm servicing craft - with new breakwater.
- It was noted RWE propose to construct an Operations and Maintenance (O&M) base at St. Michaels Pier in Dún Laoghaire Harbour to act as the main base for the Dublin Array support team. This would include offices, a control centre, workshop and a quayside pontoon for Crew Transfer Vessels (CTVs). RWE will shortly apply to An Bord Pleanála for permission for this base.
- Offshore Wind operators would benefit from accommodation and training facilities on-land.
- Develop a battery bank in the Harbour to store green energy generated by the offshore wind farm



Crew Transfer Vessel (CTV)



Rampion Wind Farm, UK



Heritage

Heritage

Theme
mentioned in
29% of
submissions

29% of submissions mentioned heritage. Key suggestions included:

Heritage Museums and Attractions

- Many of heritage-related suggestions were included in the ‘New Development Opportunities’ section including ideas for a **museum/centre** highlighting natural and maritime heritage , and for the creation of an **emigration museum**.
- Incorporate the DART station into heritage plans, potentially creating an **Industrial Revolution/Transport Museum** to honor Ireland’s first railway (opened by William Dargan in 1834).
- Make Dún Laoghaire Harbour a key point on Ireland’s Ancient East Route, incorporating heritage points like the remains of High King Laoghaire’s fort.
- Strengthen connections with the **Maritime Museum**, which is a strong existing asset featuring exhibits, historical artefacts, and engaging storytelling.
- Provide a historic **decommissioned Navy vessel**, submarine, or tall ship as an on-board visitor experience.
- Highlight the Harbour’s connection to **James Joyce’s Ulysses**, including the Sandycove Martello Tower and the Gut.

Restoration

- **Encourage tall ships** to visit by developing an East Pier boardwalk.
- Reinststate the **glazed canopy** over the public shelter at the East Pier.
- Refurbish the **gun saluting station** on the East Pier.
- Preserve and open for public use; the **Rocket House**, the **boathouse** on Trader’s Wharf, the **Lightkeeper’s Cottage**, and restore the turnstile at Coal Harbour.
- Develop the **Battery** on the East Pier into a café, visitor attraction, museum, design shop, information point, or public toilets.
- Restore the **anemometer** and re-enable real-time wind, pressure, and tidal displays.
- Incorporate heritage artefacts into landscape design.

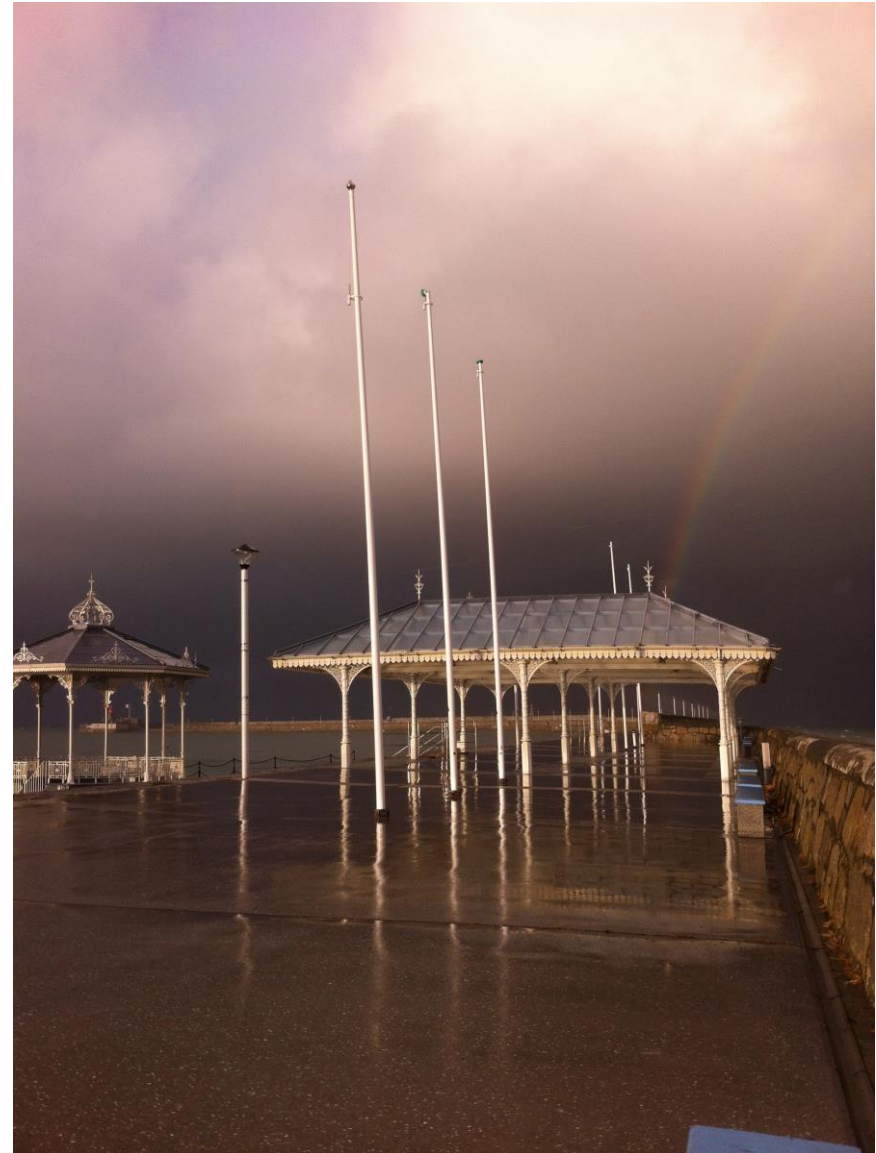
Heritage cont.

Heritage Trails and Community Engagement

- Provide **signage and information panels** detailing the Harbour's roles in sailing history, bay operations, military history, construction history, and maritime heritage.
- More **storytelling, trails** (incorporating sculpture, art) and use of VR (via a time machine telescope) to bring heritage to life.
- Include a community **noticeboard** for local groups to share heritage events.
- Bring **Carlisle Pier into community use**, acknowledging its past as the main pier for the Mail Boats.

Memorials

- Create a dedicated memorial listing the crew and passengers of the RMS Leinster.
- Acknowledge and protect the historical importance of yacht and rowing clubs based in Dún Laoghaire Harbour.
- Consider memorials to local heroes.



Photograph of the Victorian Sun Shelter on the East pier, submitted by a member of the public via the online survey

A selection of examples mentioned in submissions



National Maritime Museum, Amsterdam



The Sailing Museum, Newport



The Submarine La Flore Museum, Lorient, Brittany



Heritage elements at Portmagee Harbour, Co. Kerry



Redevelopment of Liverpool's historic docklands

A stylized illustration of a landscape. The top part shows a green field with small white curved marks, a red and white checkered pattern, and a blue and white patterned area. A light blue wavy shape, possibly representing water or a path, flows across the middle. Below this, several white teardrop-shaped marks are scattered on a red background.

Climate, Biodiversity, Environment

Climate, Biodiversity, Environment

Theme mentioned in 19% of submissions

19% of submissions mentioned climate, biodiversity, environment. Key points raised are summarised below:

Biodiversity

- Reduce impact on marine wildlife by addressing overcrowding and overuse of the Harbour waters.
- Respect the existing **wildlife and habitats** in the Harbour.
- Enhance green areas with **native** plants characteristic of a rocky shoreline, retaining some existing shrubbery colonized by local species.
- Expand green spaces with **pocket forests**, wildflower patches, and community gardens to support urban biodiversity.
- **Connect existing green spaces** to form a larger, continuous habitat for local wildlife.
- Implement **eco-friendly design** throughout – incorporating green roofs and walls, solar panels, local materials etc.
- Cultivate native **molusc beds** in the Harbour and Dublin Bay as a sustainable way to mitigate suspended particulates.

Climate Action

- Support and implement **DLR County Council's Climate Action Plan 2024-2025**.
- Lead climate and biodiversity projects by **collaborating with local groups** (e.g., Bike Hub, Flossie & the Beach Cleaners, Tidy Towns).
- Offer **environmental education and training workshops**, repair cafes, and networking events for the public, schools, and businesses.
- Establish **climate clusters** to engage community groups like men's sheds and local clubs in sustainability efforts.
- Implement **green energy solutions** for food trucks to reduce reliance on diesel generators.
- Partner with Lexicon Library and IADT for environmental **education and innovation**.

Climate, Biodiversity, Environment cont.

Green and Blue Economy

- Create job, apprenticeship, and training opportunities in **green initiatives to support local employment**.
- Pioneer **blue and circular economy** initiatives such as marine waste repair and upcycling and wind farm materials recycling. These could be in a dedicated centre (like the Rediscovery Centre) or in a Circular Economy Arcade located in the parking area next to the Bike Hub.
- Develop a Green Innovation Hub to attract green and digital companies and advance the area's role in Europe's **green transition**. This might include an AI Digital twin, smart Harbour monitoring and citizen science engagement projects.
- Address **fishing industry waste**, such as nets and plastic containers, with targeted solutions.

- Education and research centres were suggested for **green energy** focusing on tidal, wind, and solar power, and on **marine ecology and history**.

Environment/Pollution

- Continue to practice eco-friendly plant management to protect biodiversity on-land and in the water.
- Limit cruise ship tender emissions to improve air and water quality.
- Introduce a no single use cup policy.
- Continue Council policy not to use weed killer on the West Pier or elsewhere.
- Prioritise sustainable, active water travel options (e.g., rowing, sailing) over motorized watercraft.



Biodiversity and planting at the Dublin Port Greenway



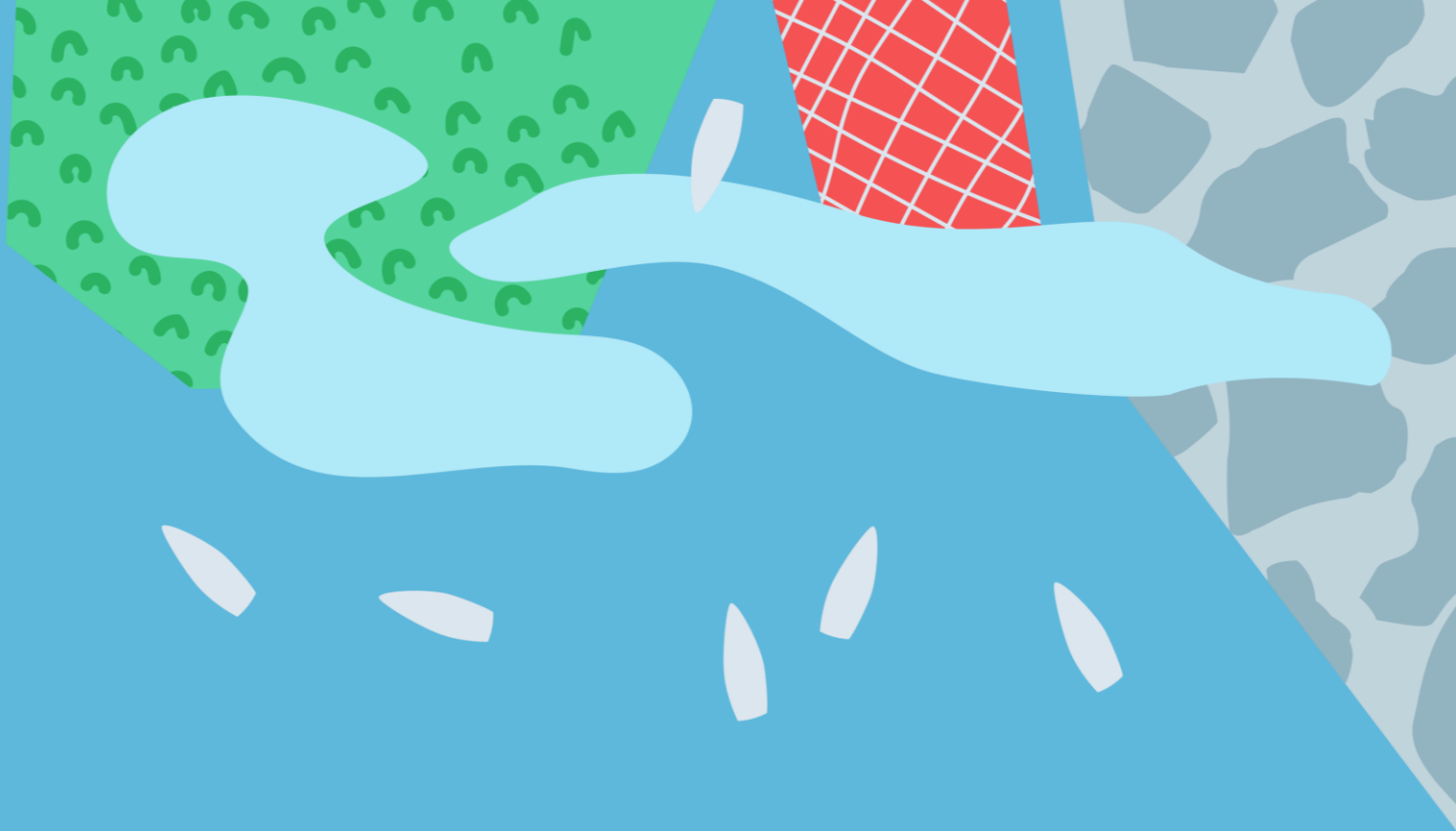
Navy, Emergency Services,
Irish Lights

Navy, Emergency Services, Irish Lights

Theme
mentioned in
6%
submissions

6% of submissions mentioned Navy, Emergency Services, Irish Lights. These were primarily technical in nature and are summarised below:

- Commission of Defence Report calls for an **East Coast base for Naval Service** – a strategic goal to develop a Forward Operating base on East Coast.
- Create a **maritime services zone with extended berth #4** for relocated RNLI, Irish Lights vessel, Wind farm servicing craft - with a new breakwater.
- Fast, unhindered **access to the water for emergency services** is paramount.
- Remove the **All-weather Lifeboat mooring** in the east Harbour and to permanently berth the ALB alongside on RNLI's re-fuelling berth. To facilitate this a Wave Screen would be required to be installed to protect the berth from the wave energy generated in that corner of the Harbour.
- Any design of a proposed events ramp outside the ALB Station should prevent wave reflection and be restricted to events and RNLI use.
- Consider the compatibility of the existing RNLI location with the **Water Sports Campus** location.
- The **diving community** has contributed over the years in assisting RNLI / Garda Search underwater department with search & recovery & search & rescue in the area.
- Maintain regular and reliable access for the **Irish Lights Vessel (ILV) Granuaile** to St Michael's Pier and Carlisle Pier and maintaining the right-of-way to bring the ship alongside the buoy yard is of critical importance to Irish Lights and the ILV Granuaile. ILV Granuaile needs access to these berths in Dun Laoghaire to carry out Irish Lights operations as a Statutory Authority providing safe navigation for all vessels navigating on all Irish Coasts. Irish Lights use these berths to load refurbished buoys for placement at sea.
- **Great Lighthouses of Ireland (GLI)** tourism initiative from the Commissioners of Irish Lights (GLI Strategy 2025-2030) with public, private and community partners – this is a plan for the reinvention of lighthouses as visitor attractions and self-catering accommodation.
- Consider relocating the Irish Lights away from Dun Laoghaire and reuse the Irish Lights building as a possible alternative for a consolidated Yacht club building.



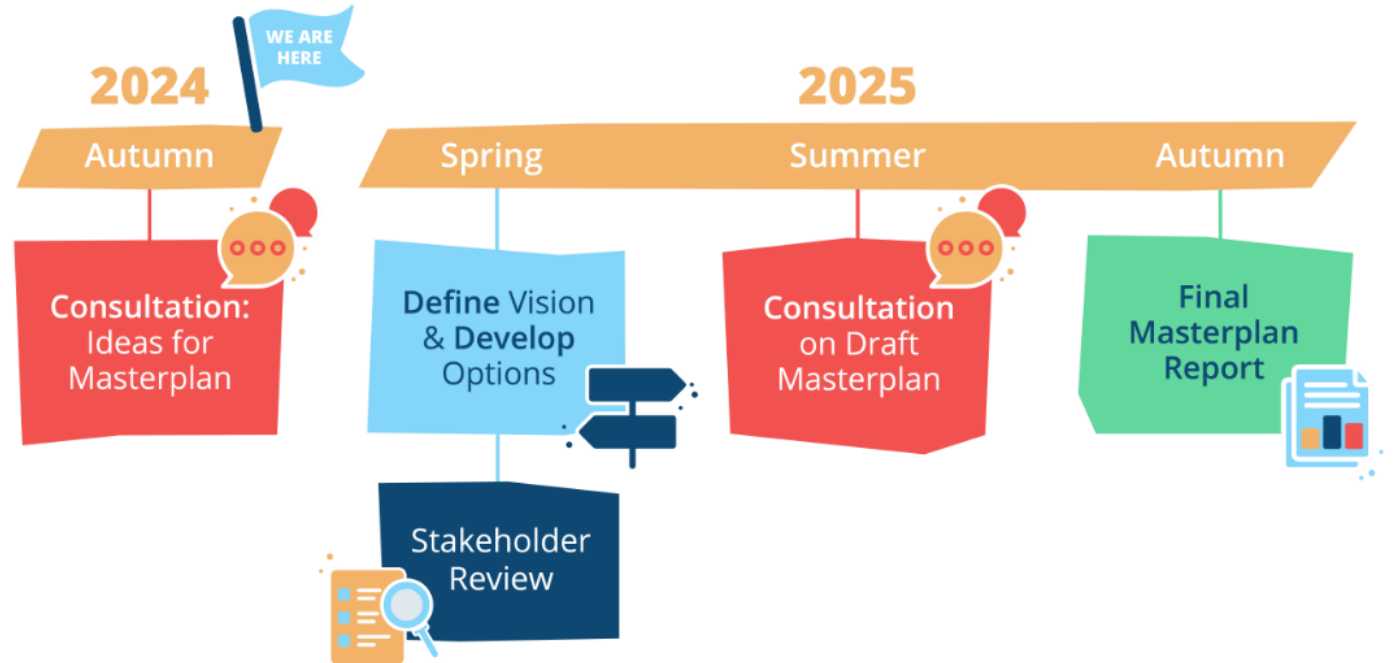
6. Next Steps

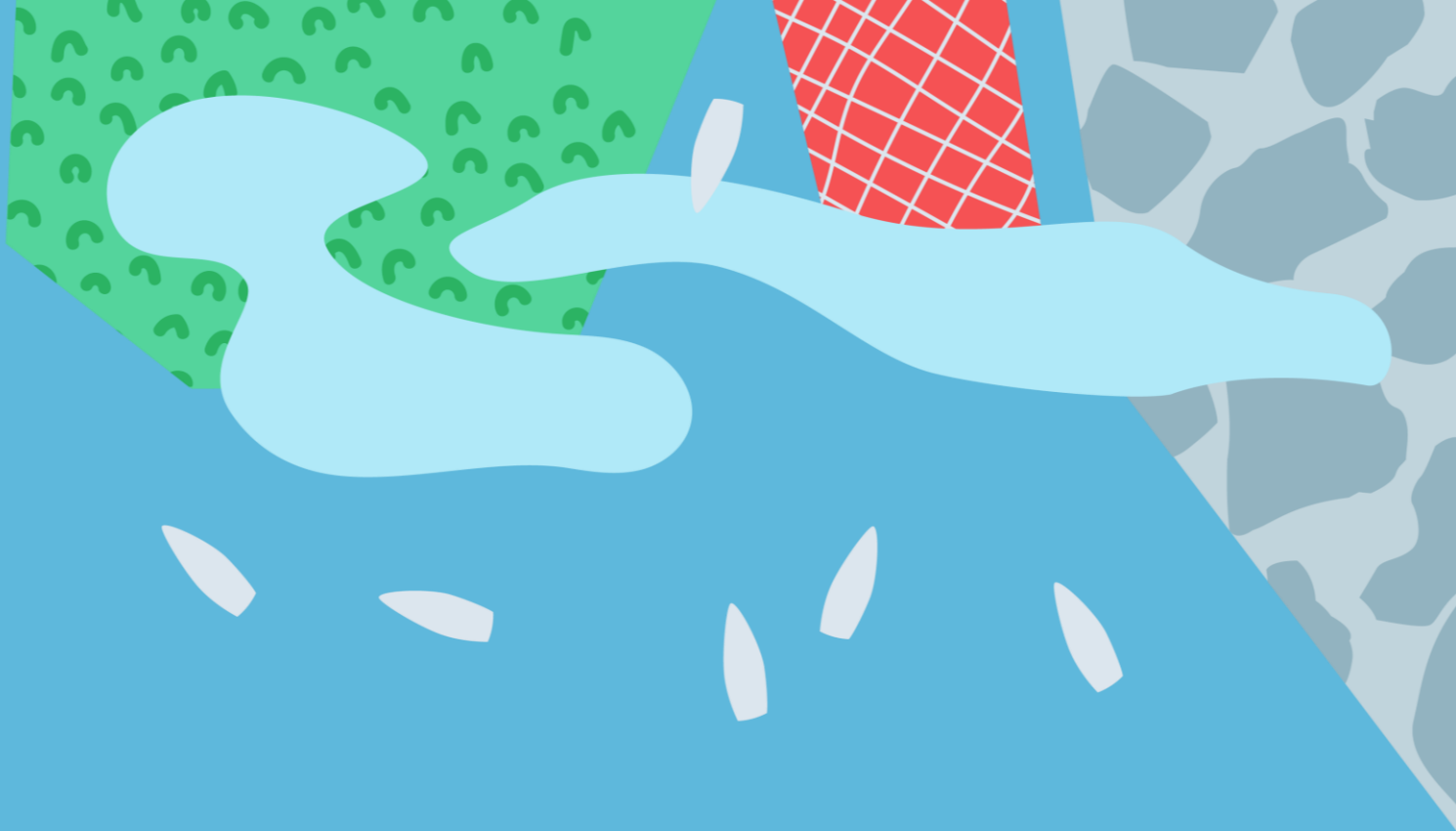
Next Steps

The project team wish to thank everyone who took part in the consultation.

The design team are currently reflecting on feedback received to inform the development of different design options and a refined vision for the Masterplan.

We urge everyone to remain involved on this journey!





APPENDIX

Stakeholder Meetings - High Level Summary

Harbour stakeholders and community groups were invited to meet the project team. The purpose was to introduce the consultation and to offer an opportunity to give initial feedback. These were a combination of individual meetings and group meetings, taking place either in-person or on-line. In total there were **36 meetings with 55 different groups**. Below is a summary of the types of groups met with and their high-level feedback.

Yacht Clubs

- Safe access to the water for all is paramount, and water should offer safe spaces for those learning to sail.
- Want to see more activity on the water and in the Harbour.
- Ability to provide and facilitate international events is important.
- Accessibility to the clubs with boats/space to store boats.
- Affordable accommodation for events.
- Keep mooring costs affordable.
- Parking is needed.
- Congestion on the access to the West Pier and the Gut
- Changing facilities, learning facilities needed.

Other sports/leisure

- Need separation of different users for safety.
- Access and parking is important for transporting equipment.
- Lack of facilities (showers, toilets, changing rooms).
- Poor accessibility for disabled access to water and watersports activities.

Marine businesses, RWE

- Proximity to maritime leisure activity is important.
- Move to new models including rental and electrification.
- Space for training.
- Storage space for boats.
- Reception for Cruise Ship passengers and the organisation of tendering.
- Dun Laoghaire as a gateway/access point to the county.
- Visitor attractions in the Harbour to help visitors stay local - not go into the city.
- Year-round attractions.
- Marine businesses value the good accessibility - train and bus.
- development potential is huge - more shops, cafes, facilities.
- Flexible coach parking space.
- Access.

Stakeholder Meetings - High Level Summary Cont.

Heritage

- Reference and consult existing plans and policy Dlr County Heritage Plan –Develop a pro-active approach to remembrance/commemoration – see for example Grangegorman Histories project, a collaboration between the Grangegorman Development Agency and various partners.
- The Genealogical Society of Ireland are looking for a permanent home – they were previously in the Harbour, now in portacabins in Loughlinstown.
- A Museum of dlr (County Museum model) – DLR don't have one, unlike many other Local Authorities.
- Satellite experiences connected to the National Maritime Museum – could be part of the “open air museum”– or the Maritime Museum may have other ideas.
- Early discussions are underway with Irish Rail in relation to some sort of visitor experience in the unused buildings in the Dun Laoghaire railway station.

Traders, hospitality

- Public toilets required.
- Opportunity for hospitality at sites such as battery and lighthouses.
- Swimming area.
- All year activity and nighttime activity needed.

Emergency Services

- Need ease of access to the water - the speed at which they can access the water is of great importance.
- Helipad for Coast Guard.

Online Survey Design

An online survey was hosted on Dun Laoghaire Rathdown County Council's *Citizenspace* public engagement platform. The survey aimed to understand how people currently use the Harbour and asks about people's hopes for its future. It combined quantitative and qualitative questions in three main sections:

- A. *About You* - name, age, where you live
- B. *Your Harbour Now* - how do you use the Harbour, what do you like about the Harbour?
- C. *Future Vision for the Harbour* – what would like to see happen in the Harbour in the key opportunity sites?

Overview



Join us in charting the future!

Dun Laoghaire-Rathdown County Council is embarking on an exciting journey to shape the future of our iconic Harbour, and we want you to be a part of it! The first phase of our consultation is now live and is open until 23 October. The Dun Laoghaire Harbour Masterplan will be our directional chart for decades to come guiding how we want to use, develop and enjoy the Harbour, and its environs.

About the Masterplan

The Masterplan will serve as a long-term (non-statutory) planning document that sets out a future vision to guide decision-making around the Harbour's growth and development. It will contain ideas for enhancing the environment,

Preview

climate resilience, increase biodiversity and greening. It will contain short, medium, and long-term actions to achieve its vision.

What happens once the Masterplan is published?

After the Masterplan is produced, the council will work with various stakeholders to secure funding, investment and partners to make its short, medium and long term actions happen. Detailed designs will be created for key parts of the Masterplan, and separate formal planning and marine consent processes will be undertaken where required.

Draft Objectives

The Masterplan will aim to achieve the following draft objectives. These are based on existing policy priorities and are expected to evolve as feedback is received and the project progresses.

- **Inclusivity & accessibility:** Make the Harbour and its waters a more inclusive and accessible recreational amenity for the enjoyment of everyone.
- **Movement & connectivity:** Improve connections between the Harbour and Dun Laoghaire town through placemaking, design and integrated sustainable mobility.
- **Heritage & tourism:** Make the Harbour a national destination offering new and enhanced attractions, rooted in its distinctive heritage and character.
- **Business & growth:** Support and promote existing related uses (maritime, recreational, fishing, residential and commercial) while fostering new economic, community and tourism opportunities.
- **Regeneration:** Repurpose and reclaim opportunity sites on land and water through appropriate, sustainable development for public, visitor and commercial needs.
- **Climate:** Build climate resilience through climate adaptation and mitigation measures and adoption of circular design principles.
- **Landscape & environment:** Maintain, enhance and expand blue and green assets for biodiversity and healthier public spaces.
- **Health & Wellbeing:** Create healthier public spaces that support physical activity, play and recreation.

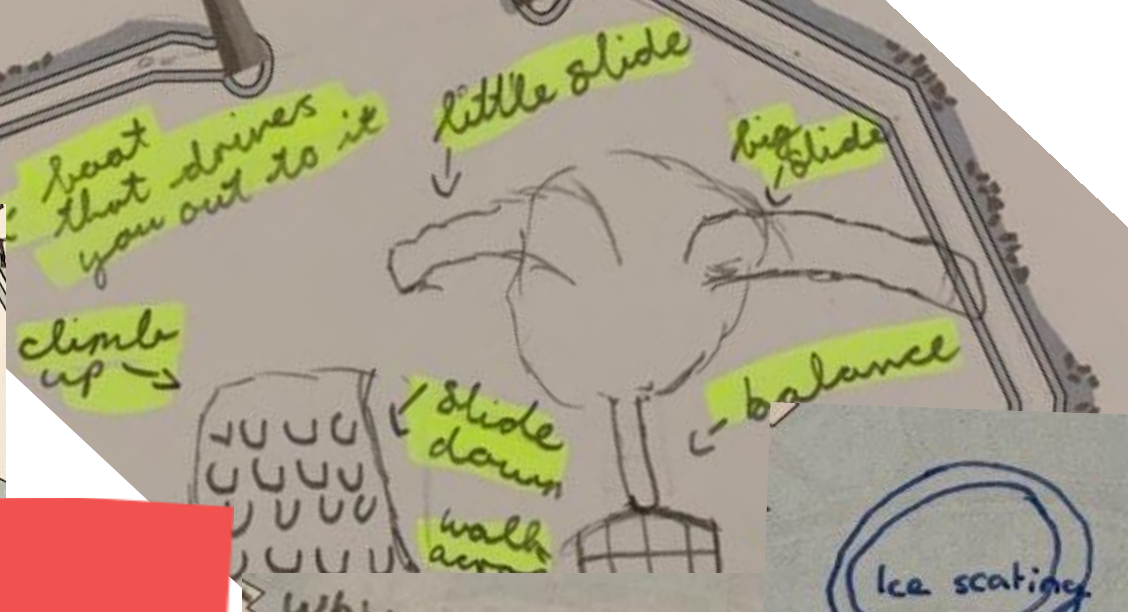
Other international examples mentioned in submissions

Examples	Theme		
Aarhus Sailing Centre	Watersports	Mercato Metropolitano, London	hospitality, retail, public space
Abu Dhabi Marina	hospitality, retail, public space	Monterey Bay Aquarium, California	Tourist Attraction
Barcelona port Olympic	Watersports	Musa Mexico Underwater museum	Tourist Attraction
Market in Mauerpark, Berlin	hospitality, retail, public space	Mystic Seaport	hospitality, retail, public space
Borough market, London	hospitality, retail, public space	New Harbour, Lisbon	hospitality, retail, public space
Brighton Beach	Watersports	Puerto Banus	hospitality, retail, public space
Buck street market, London	hospitality, retail, public space	Pier 17 New York	hospitality, retail, public space
Budapest public baths	Tourist Attraction, public amenities	Port of San Sebastian	Watersports
Cagney sur mer Harbour	Heritage	Porto Cervo, Sardinia	hospitality, retail, public space, mixed use development
Chicago Millennium Park	Arts, culture, festivals	Public sailing school Schull, Cork	Watersports
Copenhagen Nyhavn	hospitality, retail, public space	Royal Docks, London	hospitality, retail, public space, mixed use development
English market, Cork	hospitality, retail, public space	San Francisco Aquarium	Tourist Attraction
Enkhausen nautical college, The Netherlands	Watersports	Seaport Market, New York	hospitality, retail, public space
Exploratorium, Pier 15, San Francisco	Tourist Attraction	Seattle Waterfront Park	hospitality, retail, public space
Fisherman's wharf, San Francisco	hospitality, retail, public space	Smorgasburg Market, Brooklyn, New York	hospitality, retail, public space
Genoa Port and ririum	hospitality, retail, public space	Sydney Watson Bay	Watersports
Greenwich & Scutty Sark in London	hospitality, retail, public space	The V&A Waterfront in Cape Town, South Africa	hospitality, retail, public space
Greystones – integrated housing	Housing	Time Out Market, Lisbon	hospitality, retail
Hamburg Fish Market	hospitality, retail, public space	Townsville boat ramp, Australia	Watersports
Hamburg Hafen city	Tourist Attraction, mixed use development	Trieste	hospitality, retail, public space
Harvey Bay Marina, Australia	Watersports	Underwater Museum of Art, Florida	Tourist Attraction
Kanalhuset Harbour in Copenhagen	active travel	Vancouver Granville Island	hospitality, retail, public space
La Boqueria, Barcelona	hospitality, retail, public space	W5, Belfast	Tourist Attraction
La Rochelle Harbour	Watersports	Weymouth Olympic sailing venue	Watersports
Little Island, NYC	Landscaping, public space	Westhaven recreational marina, Auckland	Watersports
Mallorca Watersports	Watersports		
Malmo Harbour	hospitality, retail, public space		
Mareterra, Monaco	Watersports, mixed use development		
Marina Bay area Singapore	hospitality, retail, public space		
Marina Market, Cork	hospitality, retail, public space		
Marine Centre Wales	Tourist Attraction, Community development		
Marseille Old Port	Heritage		

Selection of Artwork from Children's Creative Submissions

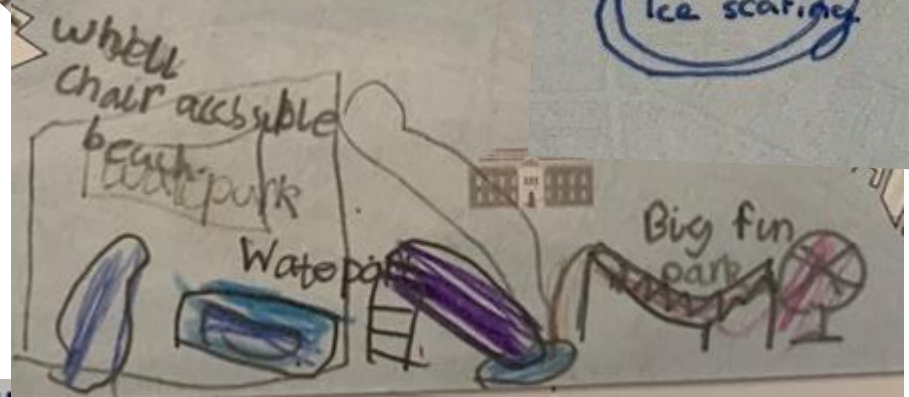
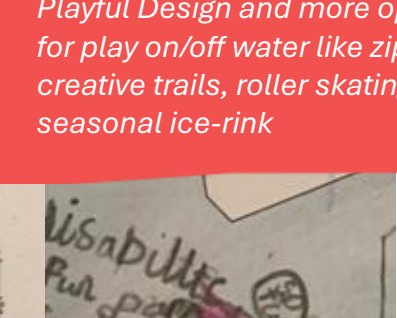
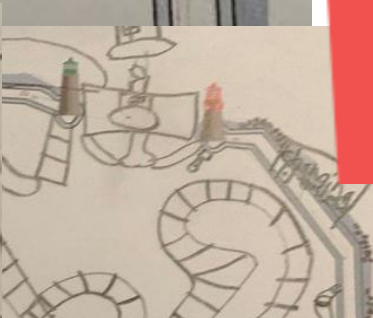
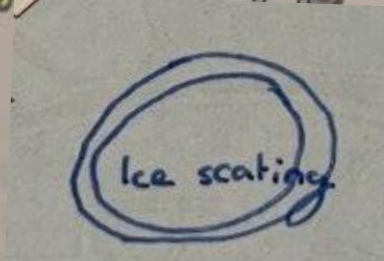
Five key themes emerged from review of the 'Wish you Were Here' Postcard Submissions, with playful interaction prevalent across all strands

1. Play
2. Nature and Wildlife Protection
3. Access to Water
4. Facilities
5. Creative Innovations and Museums.



1. Play

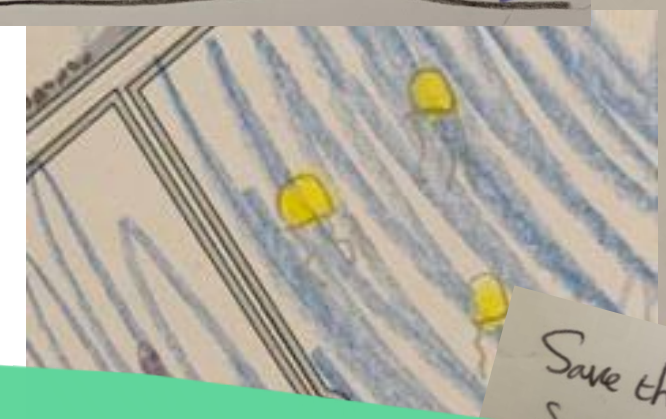
Playful Design and more opportunities for play on/off water like zipline, slides, creative trails, roller skating, and seasonal ice-rink



Harbour, and its environs.
there's also a slide for blind people that tells you what's around you.



mermaid Pupy




2. Nature

Protect, Enhance & Highlight Nature

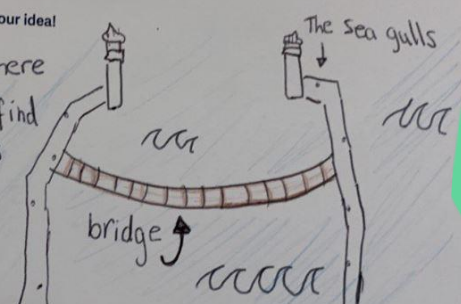
Save the Eurasian Tree Sparrow!
Their population has declined by 90% since 1969!

Draw or write your idea!

Seal Statue



a game where you have to find all the pictures of sea gulls on the walk



I think we can make a prater ship that floats on the sea and it would tell you lots of facts about sea animals.

a pet grocery station there are so many things for us and nothing for pets





Age: 8
 Candy Shop. A pool that is
 wheelchair accessible.
 A beach. A swimming rope

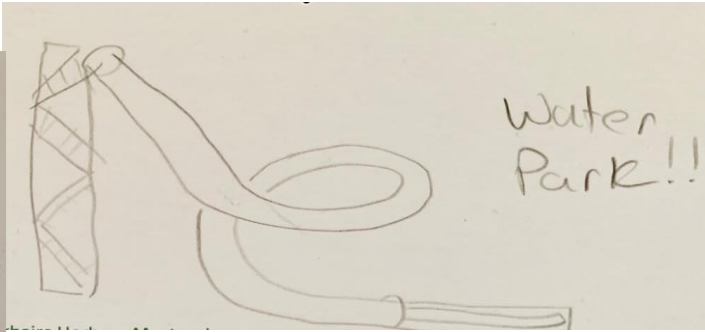


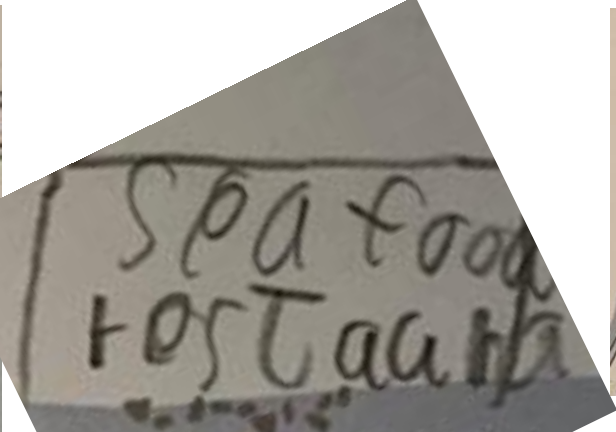
3. Water

increased access to the water, with consideration of accessibility



I think there should be a Glass Aquarium
 a, sea hotel. disabled pool. Sea food restaurant.
 Water park, a train that goes around town.
 man made beach & dog swim place.
 Sea town. ice-cream shop. a squirrels
 Shop





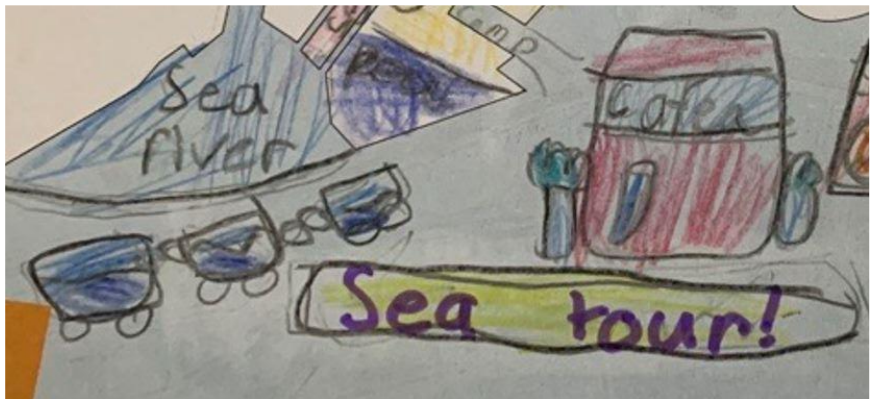
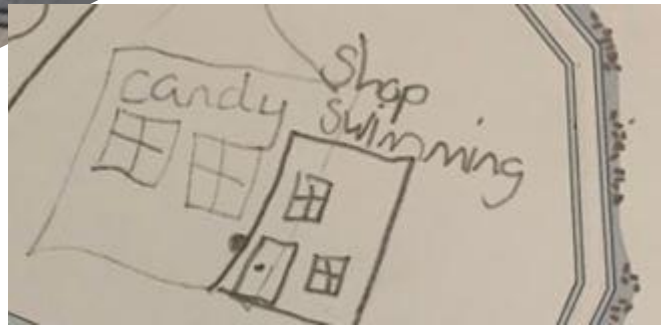
Age: 7

Coffy + Food Shop and crooning + Surf boarding + diving and flowers Rocks and aquarium beach and bubble bath and fish tunnel. There's also a ramp coming in to the bubble bath.

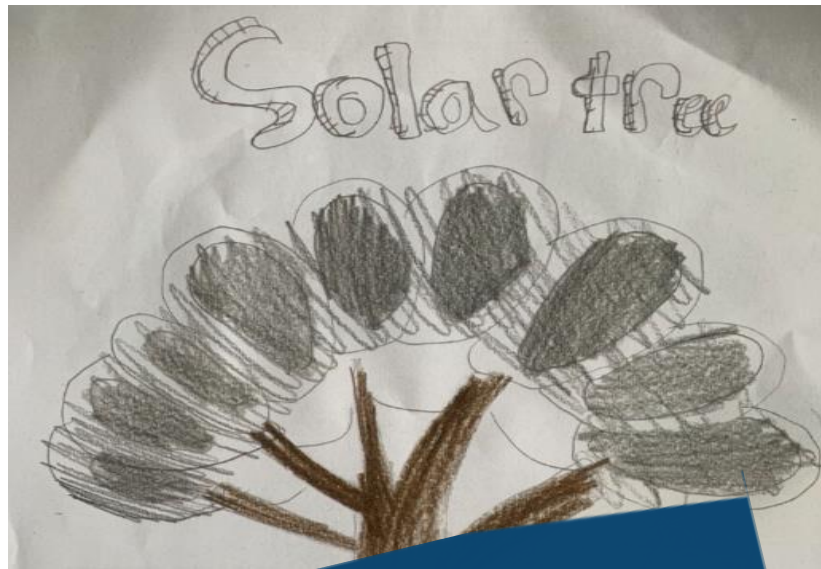
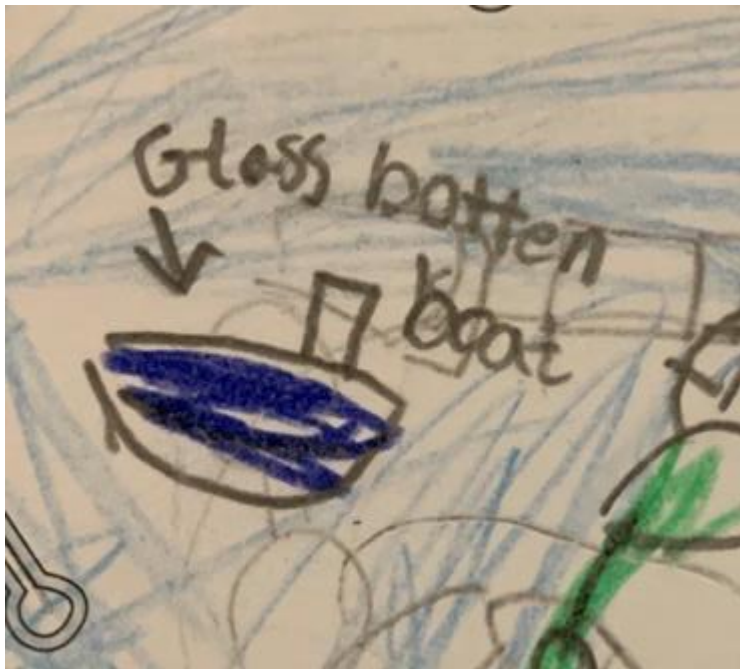
Masterplan Consultation
11th SEPTEMBER
Dún Laoghaire-Rathfriland Council are developing a new Masterplan. We are open to consultation and we want to get your views on what we want to use, care for homeless, soup kitchen

4. Facilities

like toilets, floating ice-cream shop, care for homeless, soup kitchen



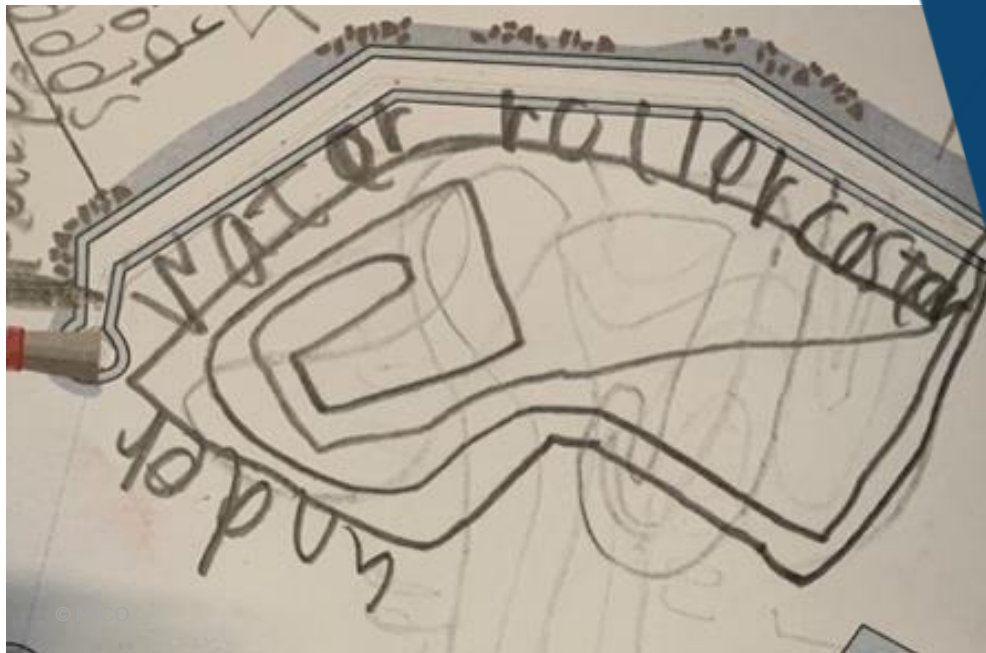
I think the ice skating rink should be permanent and there should be a pool (not salt water) with slides going in (big water slides) and water obstacle courses and there should be tubing. I hope you consider my ideas
thank you



5. Culture

Creative Innovations and Museums

4 underground glass wall showing the sea



The walls are perfect to display art!!