
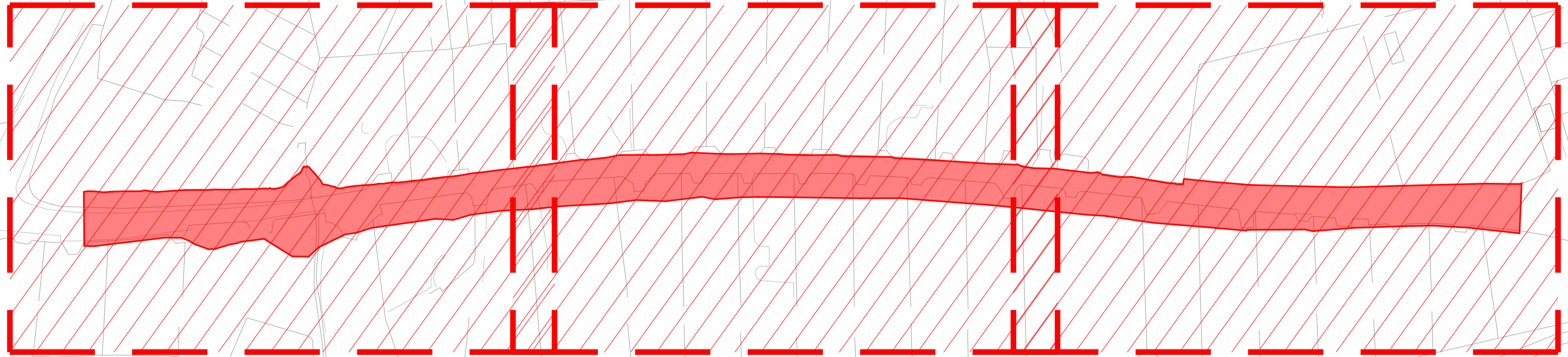


**LEGEND**

SITE BOUNDARY 



C-0003

C-0004

C-0005

**KEYPLAN**  
SCALE: 1:750

• THIS DRAWING TO BE READ IN CONJUNCTION WITH ALL OTHER RELEVANT DESIGN TEAM DRAWINGS AND SPECIFICATIONS.

• FOR SETTING OUT REFER TO ARCHITECT'S DRAWINGS. DO NOT SCALE THIS DRAWING. USE FIGURED DIMENSIONS ONLY.

• NO PART OF THIS DOCUMENT MAY BE REPRODUCED OR TRANSMITTED IN ANY FORM OR STORED IN ANY RETRIEVAL SYSTEM OF ANY NATURE WITHOUT THE WRITTEN PERMISSION OF O'CONNOR SUTTON CRONIN AS COPYRIGHT HOLDER EXCEPT AS AGREED FOR USE ON THE PROJECT FOR WHICH THE DOCUMENT WAS ORIGINALLY ISSUED.

Rev No.	Date	Revision Note	Drn by	Chkd by
P01	26.03.25	ISSUED FOR INFORMATION	HS	ZB

Rev No.	Date	Revision Note	Drn by	Chkd by



**OCSC**  
O'CONNOR SUTTON CRONIN  
MULTIDISCIPLINARY CONSULTING ENGINEERS  
Civil / Structural / Environmental / Mechanical / Electrical / Sustainability

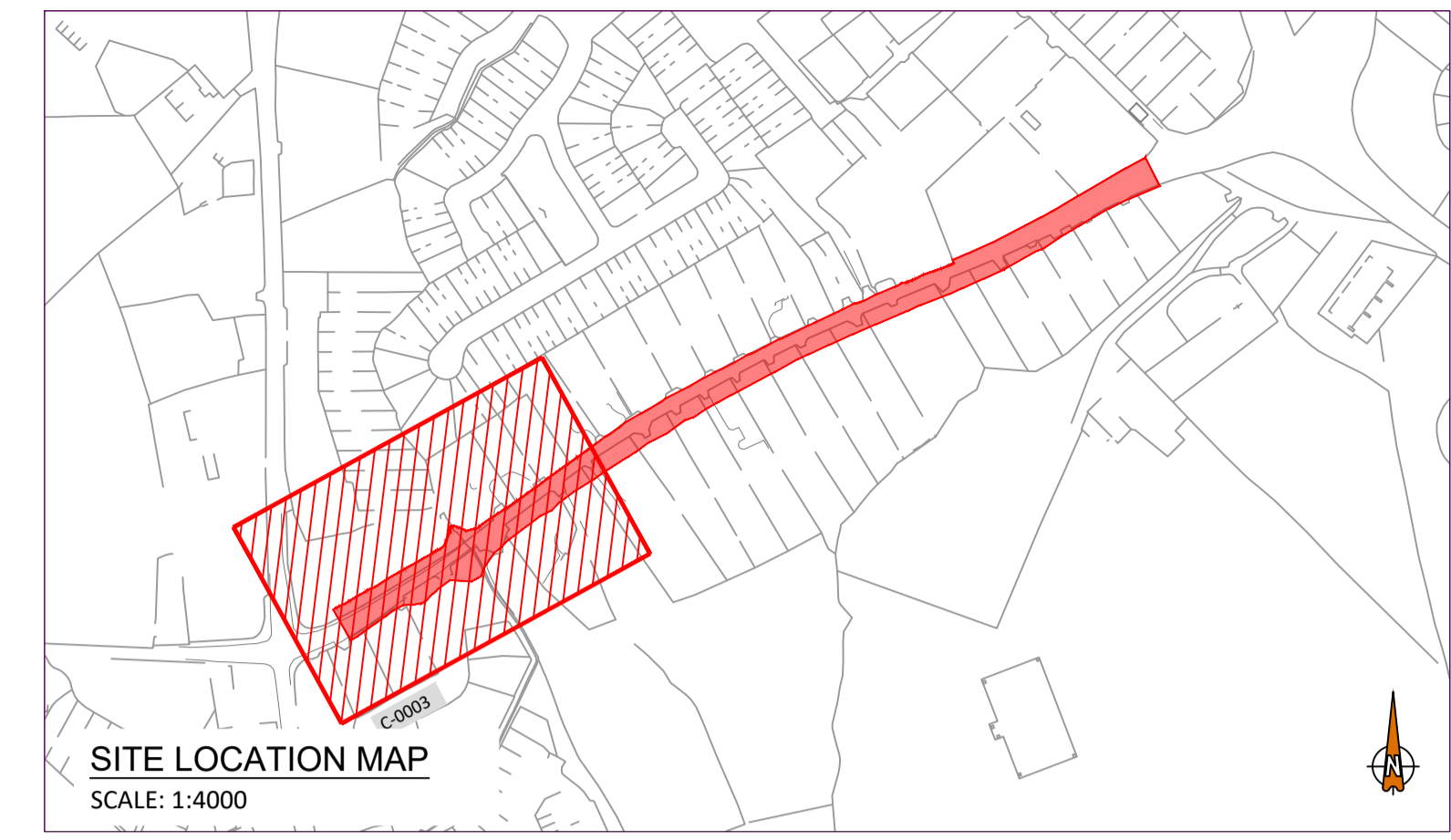
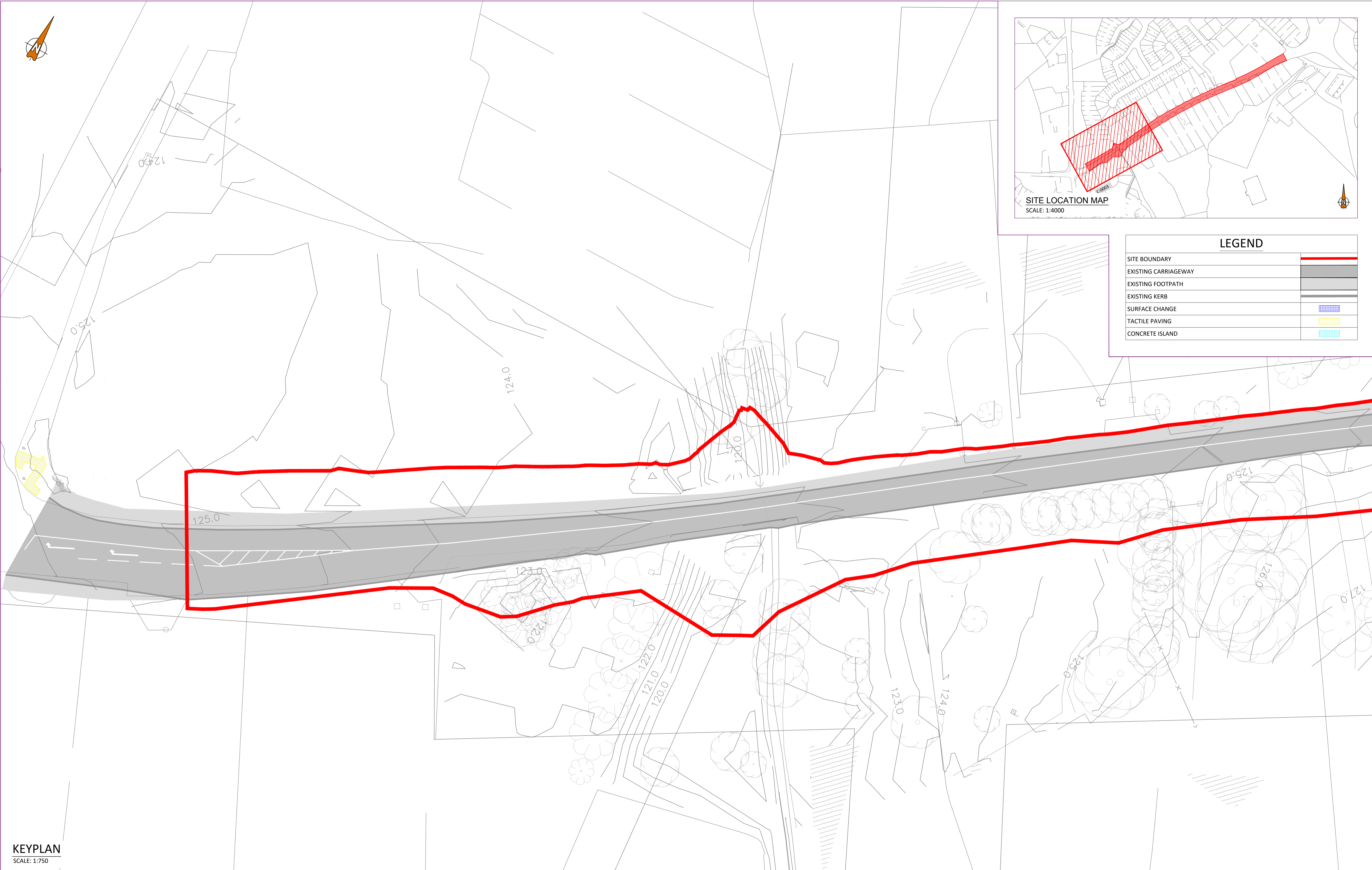
Dublin Office: 9 Prussia Street, Dublin 7, D07 KT57.

Tel: +353 (0)1 8682000 Web: www.ocsc.ie  
Dublin · London · Belfast · Galway · Cork · Birmingham

Client: **Dún Laoghaire-Rathdown County Council**  
Project: **LOW COST SAFETY SCHEMES**  
Title: **SAFETY IMPROVEMENT WORKS**  
**HILLCREST ROAD - EXISTING LAYOUT**  
**KEY PLAN**

Code | Originator | Zone | Level | Type | Role | Number | Status | Revision |  
**D805 · OCSC · XX · XX · DR · C · 0002 A3 P01**

Date: 26.03.25 Scale @ A1 AS SHOWN Drn by: HS Chkd by: CW Aprvd by: BOR



LEGEND	
SITE BOUNDARY	
EXISTING CARRIAGEWAY	
EXISTING FOOTPATH	
EXISTING KERB	
SURFACE CHANGE	
TACTILE PAVING	
CONCRETE ISLAND	

**KEYPLAN**  
SCALE: 1:750

- THIS DRAWING TO BE READ IN CONJUNCTION WITH ALL OTHER RELEVANT DESIGN TEAM DRAWINGS AND SPECIFICATIONS.
- FOR SETTING OUT REFER TO ARCHITECT'S DRAWINGS. DO NOT SCALE THIS DRAWING. USE FIGURED DIMENSIONS ONLY.
- NO PART OF THIS DOCUMENT MAY BE REPRODUCED OR TRANSMITTED IN ANY FORM OR STORED IN ANY RETRIEVAL SYSTEM OF ANY NATURE WITHOUT THE WRITTEN PERMISSION OF O'CONNOR SUTTON CRONIN AS COPYRIGHT HOLDER EXCEPT AS AGREED FOR USE ON THE PROJECT FOR WHICH THE DOCUMENT WAS ORIGINALLY ISSUED.

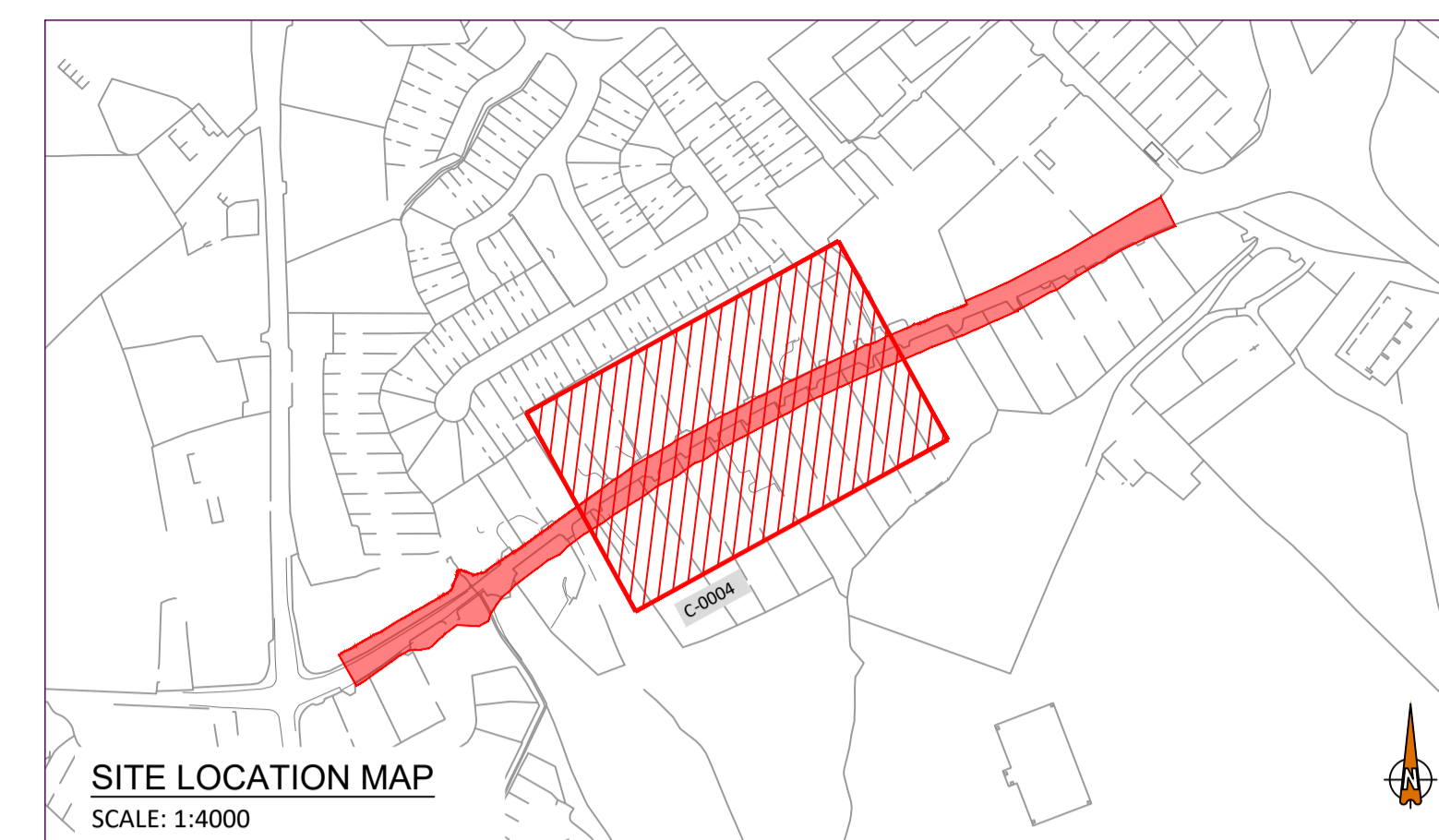
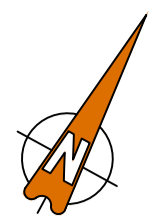
Rev No.	Date	Revision Note	Drn by	Chkd by
P01	26.03.25	ISSUED FOR INFORMATION	HS	ZB

Rev No.	Date	Revision Note	Drn by	Chkd by



**OCSC**  
O'CONNOR SUTTON CRONIN  
MULTIDISCIPLINARY CONSULTING ENGINEERS  
Civil / Structural / Environmental / Mechanical / Electrical / Sustainability  
Dublin Office: 9 Prussia Street, Dublin 7, D07 KT57.  
Tel: +353 (0)1 8682000 Web: www.ocsc.ie  
Dublin · London · Belfast · Galway · Cork · Birmingham

Client:	Dún Laoghaire-Rathdown County Council
Project:	LOW COST SAFETY SCHEMES SAFETY IMPROVEMENT WORKS HILLCREST ROAD - EXISTING LAYOUT KEY PLAN SHEET 01 OF 03
Title:	
Code	Originator   Zone   Level   Type   Role   Number   Status   Revision
D805 · OCSC · XX · XX · DR · C · 0003	A3 P01
Date: 26.03.25 Scale @ A1 AS SHOWN	Drn by: HS Chkd by: CW Aprvd by: BOR



LEGEND	
SITE BOUNDARY	
EXISTING CARRIAGEWAY	
EXISTING FOOTPATH	
EXISTING KERB	
SURFACE CHANGE	
TACTILE PAVING	
CONCRETE ISLAND	



**KEYPLAN**  
SCALE: 1:750

- THIS DRAWING TO BE READ IN CONJUNCTION WITH ALL OTHER RELEVANT DESIGN TEAM DRAWINGS AND SPECIFICATIONS.
- FOR SETTING OUT REFER TO ARCHITECT'S DRAWINGS. DO NOT SCALE THIS DRAWING. USE FIGURED DIMENSIONS ONLY.
- NO PART OF THIS DOCUMENT MAY BE REPRODUCED OR TRANSMITTED IN ANY FORM OR STORED IN ANY RETRIEVAL SYSTEM OF ANY NATURE WITHOUT THE WRITTEN PERMISSION OF O'CONNOR SUTTON CRONIN AS COPYRIGHT HOLDER EXCEPT AS AGREED FOR USE ON THE PROJECT FOR WHICH THE DOCUMENT WAS ORIGINALLY ISSUED.

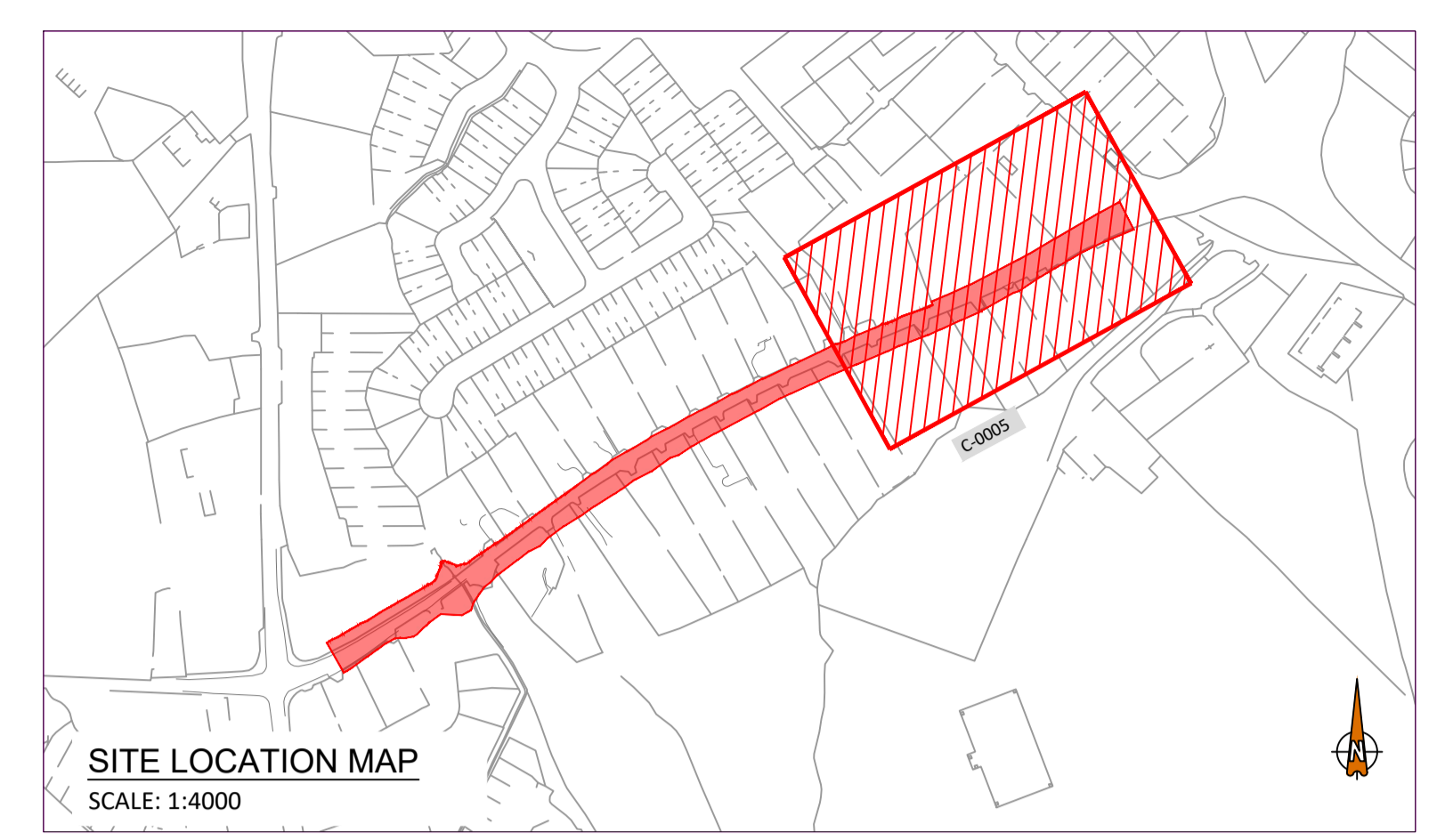
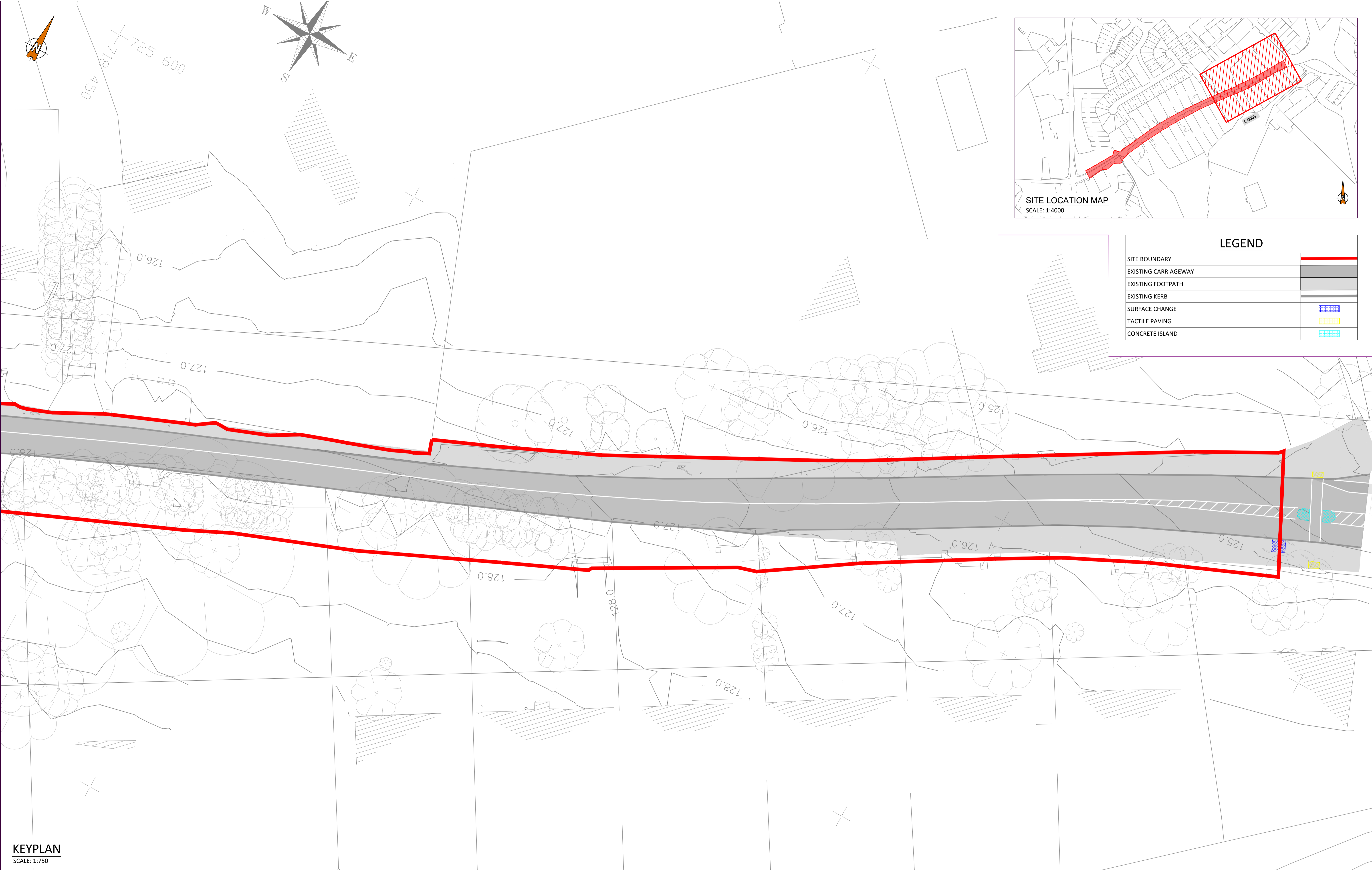
Rev No.	Date	Revision Note	Drn by	Chkd by
P01	26.03.25	ISSUED FOR INFORMATION	HS	ZB

Rev No.	Date	Revision Note	Drn by	Chkd by



**OCSC**  
O'CONNOR SUTTON CRONIN  
MULTIDISCIPLINARY CONSULTING ENGINEERS  
Civil / Structural / Environmental / Mechanical / Electrical / Sustainability  
Dublin Office: 9 Prussia Street, Dublin 7, D07 KT57.  
Tel: +353 (0)1 8682000 Web: www.ocsc.ie  
Dublin · London · Belfast · Galway · Cork · Birmingham

Client:	Dún Laoghaire-Rathdown County Council
Project:	LOW COST SAFETY SCHEMES
Title:	SAFETY IMPROVEMENT WORKS HILLCREST ROAD - EXISTING LAYOUT KEY PLAN SHEET 02 OF 03
Code	Originator   Zone   Level   Type   Role   Number   Status   Revision
D805	OCSC · XX · XX · DR · C · 0004 A3 P01
Date:	26.03.25 Scale @ A1 AS SHOWN Drn by: HS Chkd by: CW Aprvd by: BOR



LEGEND	
SITE BOUNDARY	
EXISTING CARRIAGEWAY	
EXISTING FOOTPATH	
EXISTING KERB	
SURFACE CHANGE	
TACTILE PAVING	
CONCRETE ISLAND	

**KEYPLAN**  
SCALE: 1:750

- THIS DRAWING TO BE READ IN CONJUNCTION WITH ALL OTHER RELEVANT DESIGN TEAM DRAWINGS AND SPECIFICATIONS.
- FOR SETTING OUT REFER TO ARCHITECT'S DRAWINGS. DO NOT SCALE THIS DRAWING. USE FIGURED DIMENSIONS ONLY.
- NO PART OF THIS DOCUMENT MAY BE REPRODUCED OR TRANSMITTED IN ANY FORM OR STORED IN ANY RETRIEVAL SYSTEM OF ANY NATURE WITHOUT THE WRITTEN PERMISSION OF O'CONNOR SUTTON CRONIN AS COPYRIGHT HOLDER EXCEPT AS AGREED FOR USE ON THE PROJECT FOR WHICH THE DOCUMENT WAS ORIGINALLY ISSUED.

Rev No.	Date	Revision Note	Drn by	Chkd by
P01	26.03.25	ISSUED FOR INFORMATION	HS	ZB

Rev No.	Date	Revision Note	Drn by	Chkd by



**OCSC**  
O'CONNOR SUTTON CRONIN  
MULTIDISCIPLINARY CONSULTING ENGINEERS  
Civil / Structural / Environmental / Mechanical / Electrical / Sustainability  
Dublin Office: 9 Prussia Street, Dublin 7, D07 KT57.  
Tel: +353 (0)1 8682000 Web: www.ocsc.ie  
Dublin · London · Belfast · Galway · Cork · Birmingham

Client: Dún Laoghaire–Rathdown County Council  
Project: LOW COST SAFETY SCHEMES  
Title: SAFETY IMPROVEMENT WORKS  
HILLCREST ROAD - EXISTING LAYOUT  
KEY PLAN  
SHEET 03 OF 03

Code	Originator	Zone	Level	Type	Role	Number	Status	Revision
D805	OCSC	XX	XX	DR	C	0005	A3	P01

Date: 26.03.25 Scale @ A1 AS SHOWN Drn by: HS Chkd by: CW Aprvd by: BOR