

Oatlands College All Weather

Dublin, Leinster

Lighting System

Pole / Fixture Summary						
Pole ID	Pole Height	Mtg Height	Fixture Qty	Luminaire Type	Load	Circuit
S1, S3	21.3	21.3	1	TLC-LED-1200	1.17 kW	A
		21.3	5	TLC-LED-1500	7.05 kW	A
S2	21.3	21.3	2	TLC-LED-1200	2.34 kW	A
		21.3	5	TLC-LED-1500	7.05 kW	A
S4, S6	21.3	21.3	6	TLC-LED-1500	8.46 kW	A
S5	21.3	21.3	7	TLC-LED-1500	9.87 kW	A
6			38		52.62 kW	

Circuit Summary			
Circuit	Description	Load	Fixture Qty
A	GAA/Football	52.62 kW	38

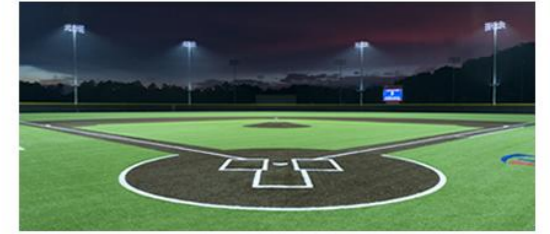
Fixture Type Summary							
Type	Source	Wattage	Lumens	L90	L80	L70	Quantity
TLC-LED-1200	LED 5700K - 75 CRI	1170W	150,000	>120,000	>120,000	>120,000	4
TLC-LED-1500	LED 5700K - 75 CRI	1410W	181,000	>120,000	>120,000	>120,000	34

Single Luminaire Amperage Draw Chart							
Driver (.90 min power factor)	Line Amperage Per Luminaire						
Single Phase Voltage	220 (50)	230 (50)	240 (50)	380 (50)	400 (50)	415 (50)	
TLC-LED-1200	6.5	6.3	6.0	3.8	3.6	3.5	
TLC-LED-1500	7.9	7.6	7.3	4.6	4.4	4.2	

Light Level Summary

Calculation Grid Summary								
Grid Name	Calculation Metric	Illumination					Circuits	Fixture Qty
		Ave	Min	Max	Min/Max	Min/Ave		
Football	Horizontal Illuminance	513	392	687	0.57	0.76	A	38
GAA Spill	Horizontal Illuminance	22.4	0	389	0.00	0.00	A	38
GAA Spill	True Max Vert Illuminance	23.9	0	407	0.00	0.00	A	38
GAA	Horizontal Illuminance	517	387	702	0.55	0.75	A	38
LTW	Horizontal	0	0	0.05	0.00	0.00	A	38
LTW	True Max Vert Illuminance	0.01	0	0.14	0.00	0.00	A	38

From Hometown to Professional



We Make It Happen®

Not to be reproduced in whole or part without the written consent of Musco Sports Lighting, LLC. ©1981, 2023 Musco Sports Lighting, LLC.

EQUIPMENT LIST FOR AREAS SHOWN								
Pole				Luminaires				
QTY	LOCATION	SIZE	GRADE ELEVATION	MOUNTING HEIGHT	LUMINAIRE TYPE	QTY / POLE	THIS GRID	OTHER GRIDS
1	S1	21.34m	0m	21.34m	TLC-LED-1500	5	5	0
				21.34m	TLC-LED-1200	1	1	0
1	S2	21.34m	0m	21.34m	TLC-LED-1500	5	5	0
				21.34m	TLC-LED-1200	2	2	0
1	S3	21.34m	0m	21.34m	TLC-LED-1200	1	1	0
				21.34m	TLC-LED-1500	5	5	0
2	S4, S6	21.34m	0m	21.34m	TLC-LED-1500	6	6	0
1	S5	21.34m	0m	21.34m	TLC-LED-1500	7	7	0
6	TOTALS					38	38	0

Oatlands College All Weather

Dublin, Leinster

GRID SUMMARY	
Name:	GAA
Size:	130.0m x 80.0m
Spacing:	9.6m x 9.4m
Height:	1.0m above grade

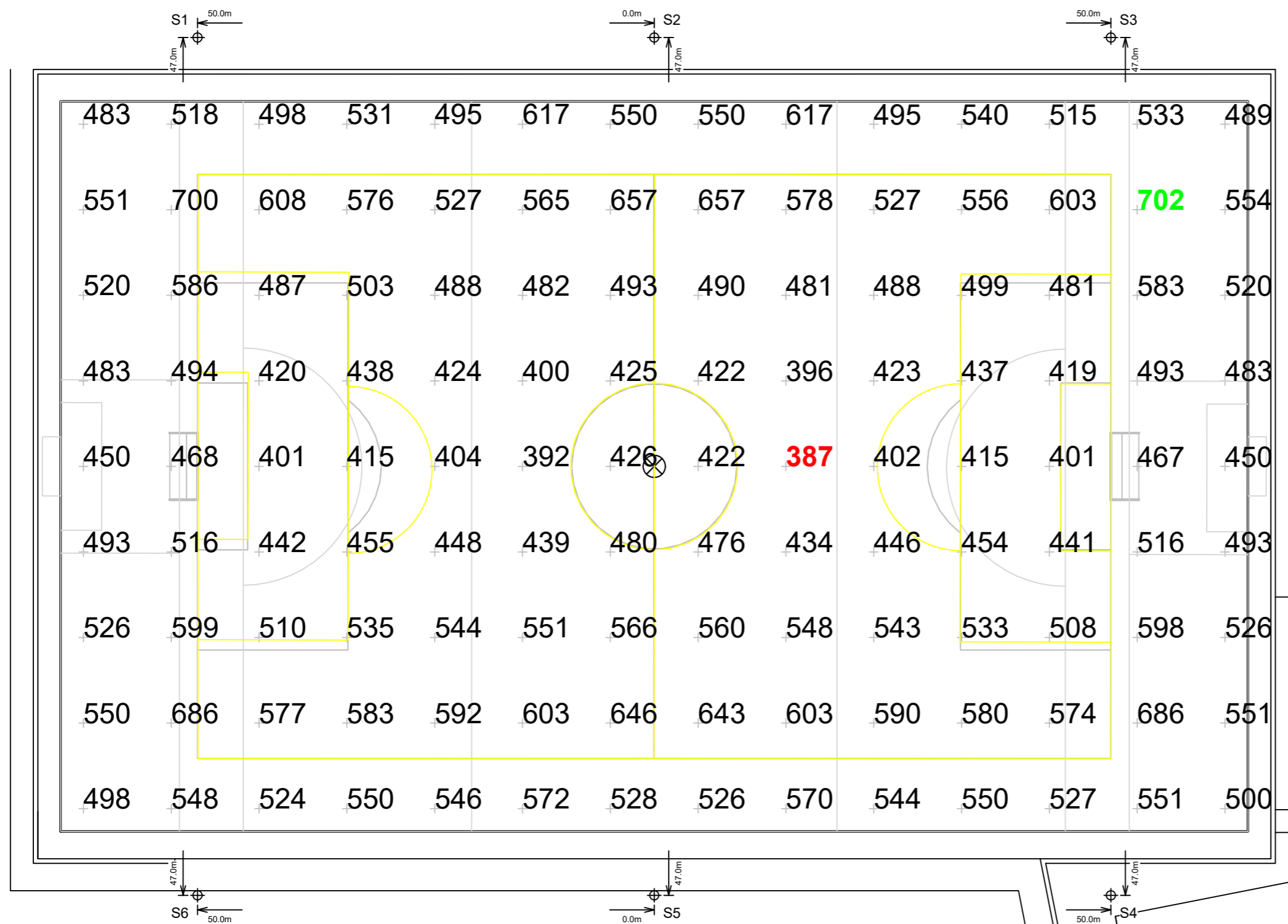
ILLUMINATION SUMMARY	
MAINTAINED HORIZONTAL LUX	
Entire Grid	
Guaranteed Average:	500
Scan Average:	516.85
Maximum:	702
Minimum:	387
Guaranteed Min / Avg:	0.7
Min / Avg:	0.75
Min / Max:	0.55
UG (adjacent pts):	1.35
CU:	0.86
No. of Points:	126
LUMINAIRE INFORMATION	
Applied Circuits:	A
No. of Luminaires:	38
Total Load:	52.62 kW

Guaranteed Performance: The ILLUMINATION described above is guaranteed per your Musco Warranty document and includes a 0.95 dirt depreciation factor.

Field Measurements: Individual field measurements may vary from computer-calculated predictions and should be taken in accordance with IESNA RP-6-15.

Electrical System Requirements: Refer to Amperage Draw Chart and/or the "Musco Control System Summary" for electrical sizing.

Installation Requirements: Results assume ± 3% nominal voltage at line side of the driver and structures located within 3 feet (1m) of design locations.



Pole location(s) ⊕ dimensions are relative to 0,0 reference point(s) ⊗



We Make It Happen.

Not to be reproduced in whole or part without the written consent of Musco Sports Lighting, LLC. ©1981, 2023 Musco Sports Lighting, LLC.

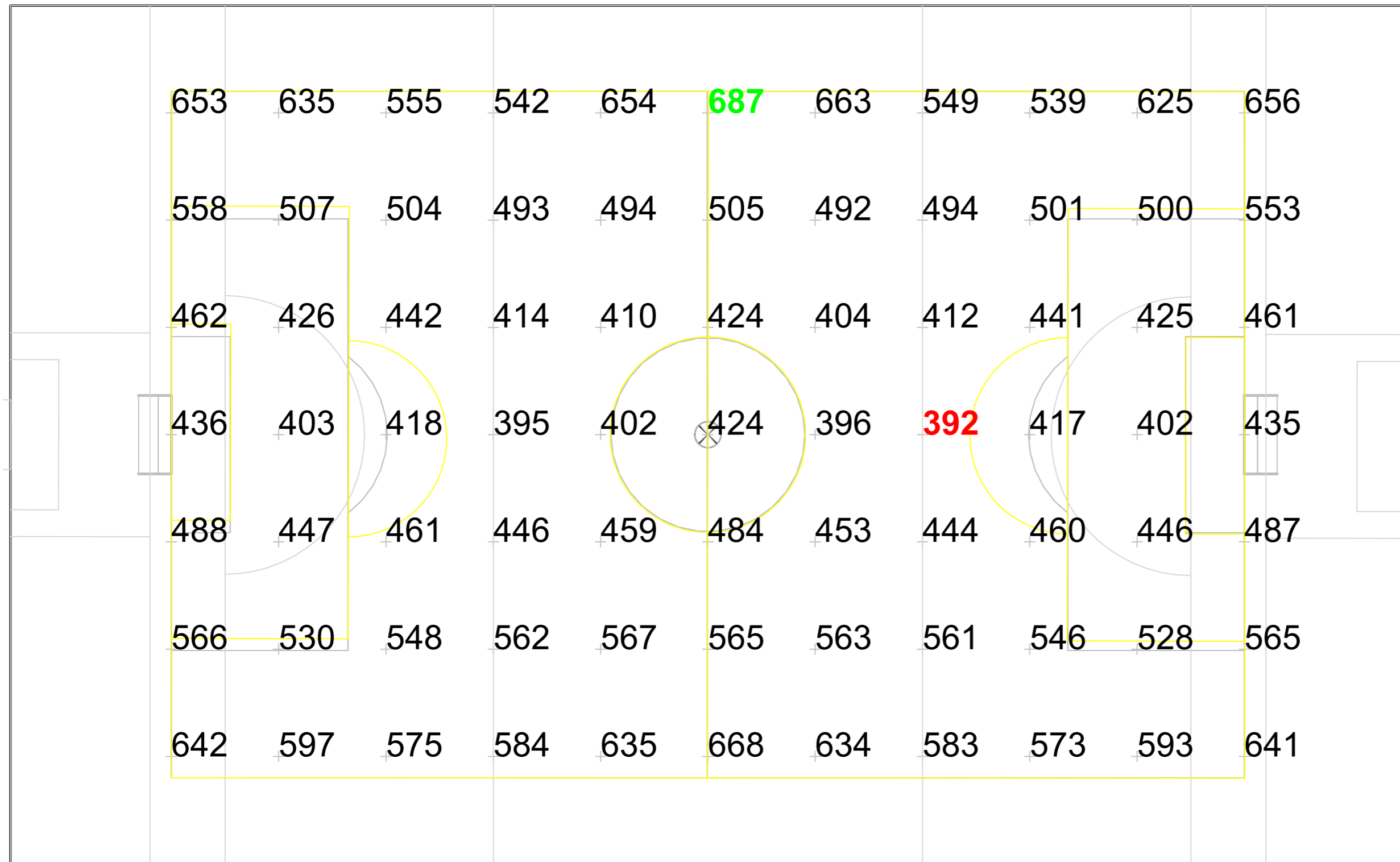
ILLUMINATION SUMMARY

EQUIPMENT LIST FOR AREAS SHOWN								
Pole				Luminaires				
QTY	LOCATION	SIZE	GRADE ELEVATION	MOUNTING HEIGHT	LUMINAIRE TYPE	QTY / POLE	THIS GRID	OTHER GRIDS
1	S1	21.34m	-	21.34m	TLC-LED-1500	5	5	0
				21.34m	TLC-LED-1200	1	1	0
1	S2	21.34m	-	21.34m	TLC-LED-1500	5	5	0
				21.34m	TLC-LED-1200	2	2	0
1	S3	21.34m	-	21.34m	TLC-LED-1200	1	1	0
				21.34m	TLC-LED-1500	5	5	0
2	S4, S6	21.34m	-	21.34m	TLC-LED-1500	6	6	0
1	S5	21.34m	-	21.34m	TLC-LED-1500	7	7	0
6	TOTALS					38	38	0

Oatlands College All Weather Dublin, Leinster

GRID SUMMARY	
Name:	Football
Size:	100.0m x 64.0m
Spacing:	10.0m x 10.0m
Height:	1.0m above grade

ILLUMINATION SUMMARY	
MAINTAINED HORIZONTAL LUX	
Entire Grid	
Guaranteed Average:	500
Scan Average:	513.02
Maximum:	687
Minimum:	392
Guaranteed Min / Avg:	0.7
Min / Avg:	0.76
Min / Max:	0.57
UG (adjacent pts):	1.36
CU:	0.58
No. of Points:	77
LUMINAIRE INFORMATION	
Applied Circuits:	A
No. of Luminaires:	38
Total Load:	52.62 kW

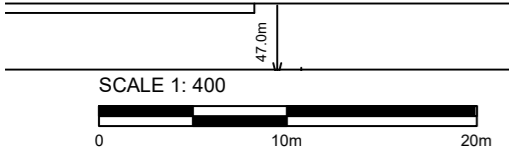


Guaranteed Performance: The ILLUMINATION described above is guaranteed per your Musco Warranty document and includes a 0.95 dirt depreciation factor.

Field Measurements: Individual field measurements may vary from computer-calculated predictions and should be taken in accordance with IESNA RP-6-15.

Electrical System Requirements: Refer to Amperage Draw Chart and/or the "Musco Control System Summary" for electrical sizing.

Installation Requirements: Results assume ± 3% nominal voltage at line side of the driver and structures located within 3 feet (1m) of design locations.

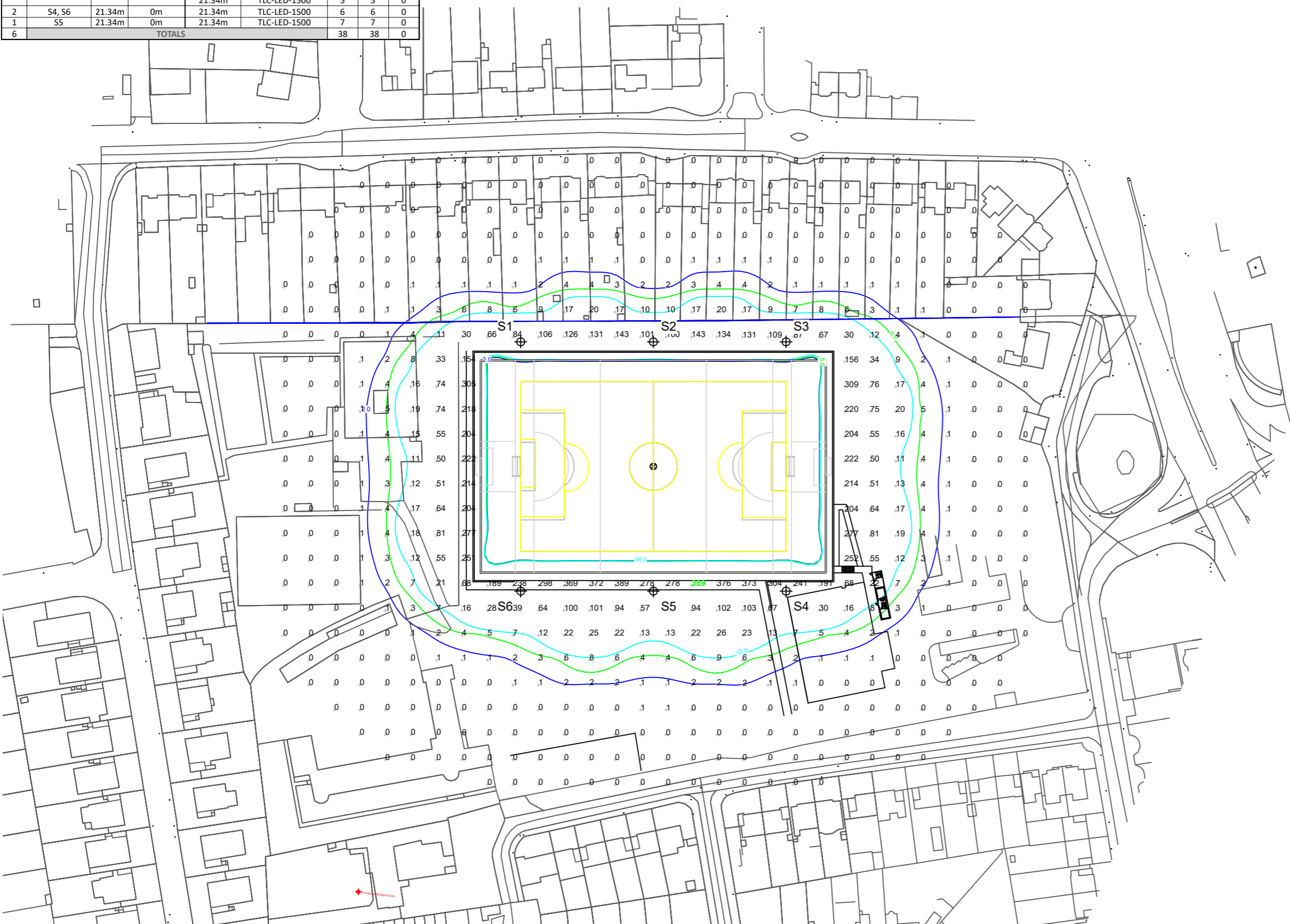


Pole location(s) ⊕ dimensions are relative to 0,0 reference point(s) ⊗



Not to be reproduced in whole or part without the written consent of Musco Sports Lighting, LLC. ©1981, 2023 Musco Sports Lighting, LLC.

EQUIPMENT LIST FOR AREAS SHOWN								
Pole				Luminaires				
QTY	LOCATION	SIZE	GRADE ELEVATION	MOUNTING HEIGHT	LUMINAIRE TYPE	QTY / POLE	THIS GRID	OTHER GRIDS
1	S1	21.34m	0m	21.34m	TLC-LED-1500	5	5	0
				21.34m	TLC-LED-1200	1	1	0
1	S2	21.34m	0m	21.34m	TLC-LED-1500	5	5	0
				21.34m	TLC-LED-1200	2	2	0
1	S3	21.34m	0m	21.34m	TLC-LED-1200	1	1	0
				21.34m	TLC-LED-1500	5	5	0
2	S4, S6	21.34m	0m	21.34m	TLC-LED-1500	6	6	0
1	S5	21.34m	0m	21.34m	TLC-LED-1500	7	7	0
6	TOTALS					38	38	0



Oatlands College All Weather

Dublin, Leinster

GRID SUMMARY	
Name:	GAA Spill
Size:	130.0m x 80.0m
Spacing:	9.6m x 9.4m
Height:	1.0m above grade

ILLUMINATION SUMMARY	
HORIZONTAL LUX	
Scan Average:	22.3856
Maximum:	389.17
Minimum:	0.00
CU:	0.15
No. of Points:	592
LUMINAIRE INFORMATION	
Applied Circuits:	A
No. of Luminaires:	38
Total Load:	52.62 kW

Guaranteed Performance: The ILLUMINATION described above is guaranteed per your Musco Warranty document.

Field Measurements: Individual field measurements may vary from computer-calculated predictions and should be taken in accordance with IESNA RP-6-15.

Electrical System Requirements: Refer to Amperage Draw Chart and/or the "Musco Control System Summary" for electrical sizing.

Installation Requirements: Results assume ± 3% nominal voltage at line side of the driver and structures located within 3 feet (1m) of design locations.



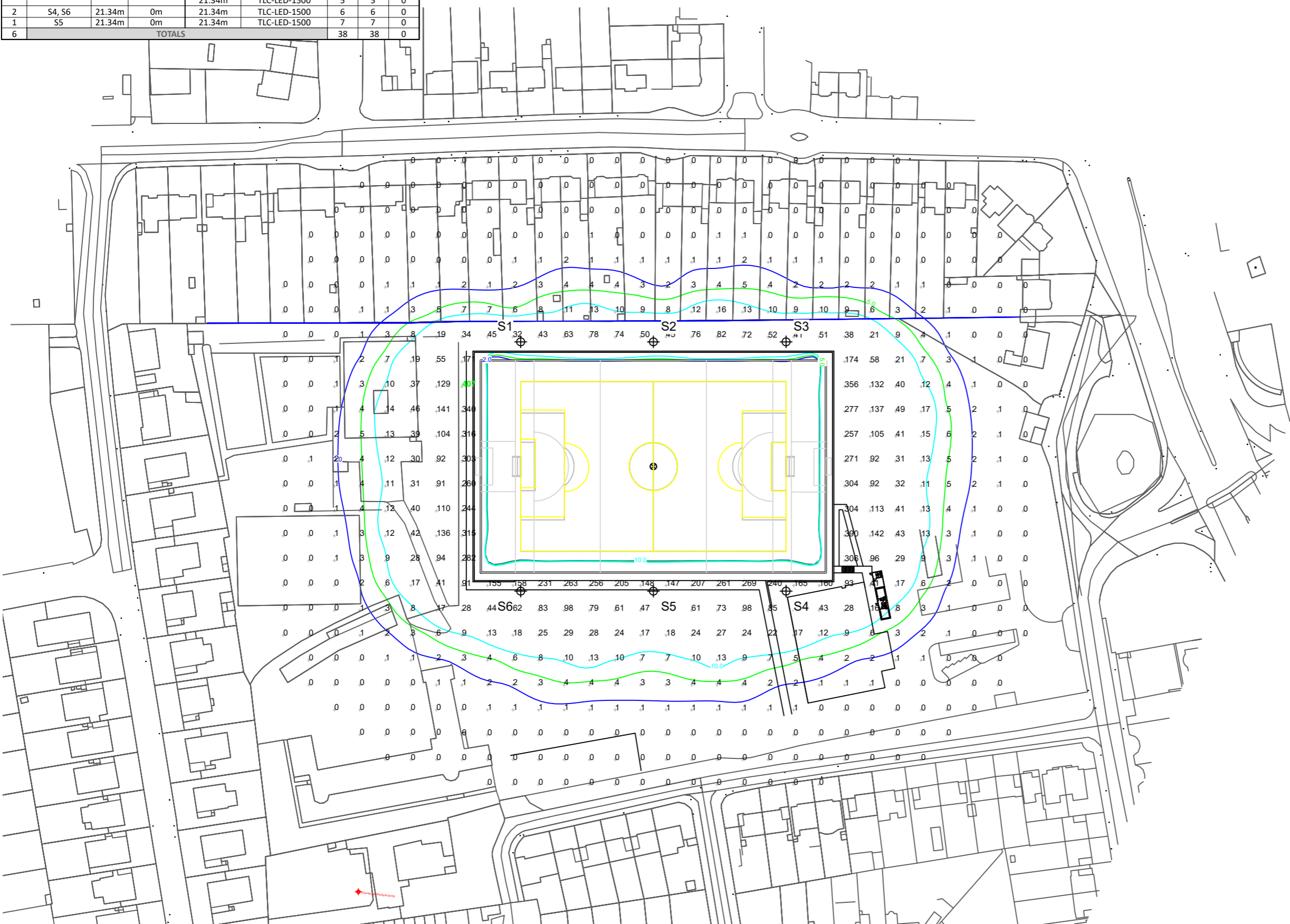
We Make It Happen.

Not to be reproduced in whole or part without the written consent of Musco Sports Lighting, LLC. ©1981, 2023 Musco Sports Lighting, LLC.

ILLUMINATION SUMMARY

Pole location(s) ⊕ dimensions are relative to 0,0 reference point(s) ⊗

EQUIPMENT LIST FOR AREAS SHOWN								
Pole				Luminaires				
QTY	LOCATION	SIZE	GRADE ELEVATION	MOUNTING HEIGHT	LUMINAIRE TYPE	QTY / POLE	THIS GRID	OTHER GRIDS
1	S1	21.34m	0m	21.34m	TLC-LED-1500	5	5	0
				21.34m	TLC-LED-1200	1	1	0
1	S2	21.34m	0m	21.34m	TLC-LED-1500	5	5	0
				21.34m	TLC-LED-1200	2	2	0
1	S3	21.34m	0m	21.34m	TLC-LED-1200	1	1	0
				21.34m	TLC-LED-1500	5	5	0
2	S4, S6	21.34m	0m	21.34m	TLC-LED-1500	6	6	0
1	S5	21.34m	0m	21.34m	TLC-LED-1500	7	7	0
6	TOTALS					38	38	0



Oatlands College All Weather

Dublin, Leinster

GRID SUMMARY	
Name:	GAA Spill
Size:	130.0m x 80.0m
Spacing:	9.6m x 9.4m
Height:	1.0m above grade

ILLUMINATION SUMMARY	
MAX VERTICAL LUX	
Scan Average:	23.8710
Maximum:	406.95
Minimum:	0.00
CU:	0.15
No. of Points:	592
LUMINAIRE INFORMATION	
Applied Circuits:	A
No. of Luminaires:	38
Total Load:	52.62 kW

Guaranteed Performance: The ILLUMINATION described above is guaranteed per your Musco Warranty document.

Field Measurements: Individual field measurements may vary from computer-calculated predictions and should be taken in accordance with IESNA RP-6-15.

Electrical System Requirements: Refer to Amperage Draw Chart and/or the "Musco Control System Summary" for electrical sizing.

Installation Requirements: Results assume ± 3% nominal voltage at line side of the driver and structures located within 3 feet (1m) of design locations.

SCALE 1: 1500
0 15m 30m

Pole location(s) ⊕ dimensions are relative to 0,0 reference point(s) ⊗



We Make It Happen.

Not to be reproduced in whole or part without the written consent of Musco Sports Lighting, LLC. ©1981, 2023 Musco Sports Lighting, LLC.

ILLUMINATION SUMMARY

EQUIPMENT LIST FOR AREAS SHOWN								
Pole				Luminaires				
QTY	LOCATION	SIZE	GRADE ELEVATION	MOUNTING HEIGHT	LUMINAIRE TYPE	QTY / POLE	THIS GRID	OTHER GRIDS
1	S1	21.34m	-	21.34m	TLC-LED-1500	5	5	0
				21.34m	TLC-LED-1200	1	1	0
1	S2	21.34m	-	21.34m	TLC-LED-1500	5	5	0
				21.34m	TLC-LED-1200	2	2	0
1	S3	21.34m	-	21.34m	TLC-LED-1200	1	1	0
				21.34m	TLC-LED-1500	5	5	0
2	S4, S6	21.34m	-	21.34m	TLC-LED-1500	6	6	0
1	S5	21.34m	-	21.34m	TLC-LED-1500	7	7	0
6	TOTALS					38	38	0

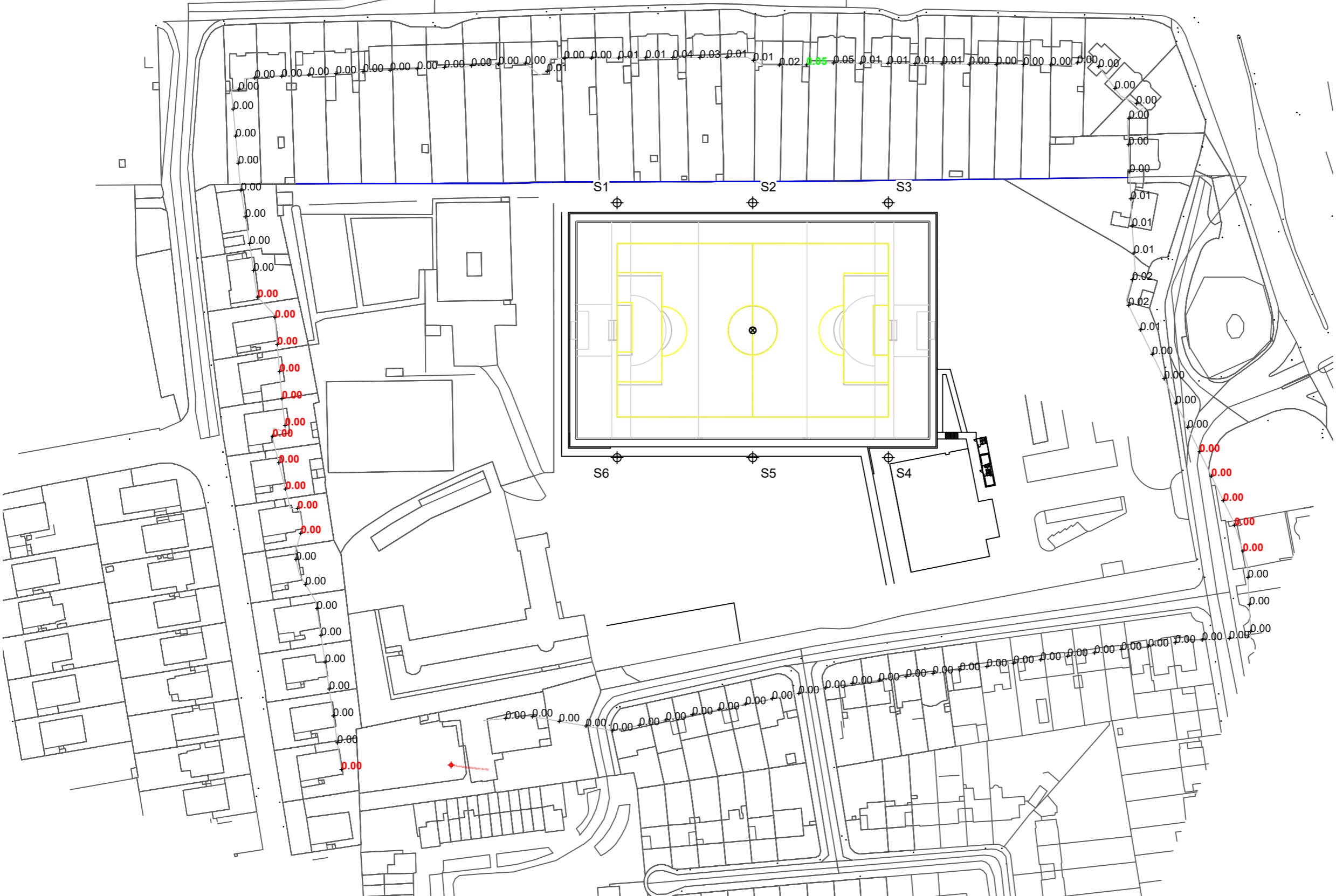
Oatlands College All Weather

Dublin, Leinster

GRID SUMMARY	
Name:	ITW
Spacing:	10.0m
Height:	1.5m above grade

ILLUMINATION SUMMARY	
HORIZONTAL LUX	
Scan Average:	Entire Grid 0.0037
Maximum:	0.05
Minimum:	0.00
No. of Points:	112
LUMINAIRE INFORMATION	
Applied Circuits:	A
No. of Luminaires:	38
Total Load:	52.62 kW

- Guaranteed Performance:** The ILLUMINATION described above is guaranteed per your Musco Warranty document.
- Field Measurements:** Individual field measurements may vary from computer-calculated predictions and should be taken in accordance with IESNA RP-6-15.
- Electrical System Requirements:** Refer to Amperage Draw Chart and/or the "Musco Control System Summary" for electrical sizing.
- Installation Requirements:** Results assume ± 3% nominal voltage at line side of the driver and structures located within 3 feet (1m) of design locations.



Pole location(s) ⊕ dimensions are relative to 0,0 reference point(s) ⊗



We Make It Happen.

Not to be reproduced in whole or part without the written consent of Musco Sports Lighting, LLC. ©1981, 2023 Musco Sports Lighting, LLC.

EQUIPMENT LIST FOR AREAS SHOWN								
Pole				Luminaires				
QTY	LOCATION	SIZE	GRADE ELEVATION	MOUNTING HEIGHT	LUMINAIRE TYPE	QTY / POLE	THIS GRID	OTHER GRIDS
1	S1	21.34m	-	21.34m	TLC-LED-1500	5	5	0
				21.34m	TLC-LED-1200	1	1	0
1	S2	21.34m	-	21.34m	TLC-LED-1500	5	5	0
				21.34m	TLC-LED-1200	2	2	0
1	S3	21.34m	-	21.34m	TLC-LED-1200	1	1	0
				21.34m	TLC-LED-1500	5	5	0
2	S4, S6	21.34m	-	21.34m	TLC-LED-1500	6	6	0
1	S5	21.34m	-	21.34m	TLC-LED-1500	7	7	0
6	TOTALS					38	38	0

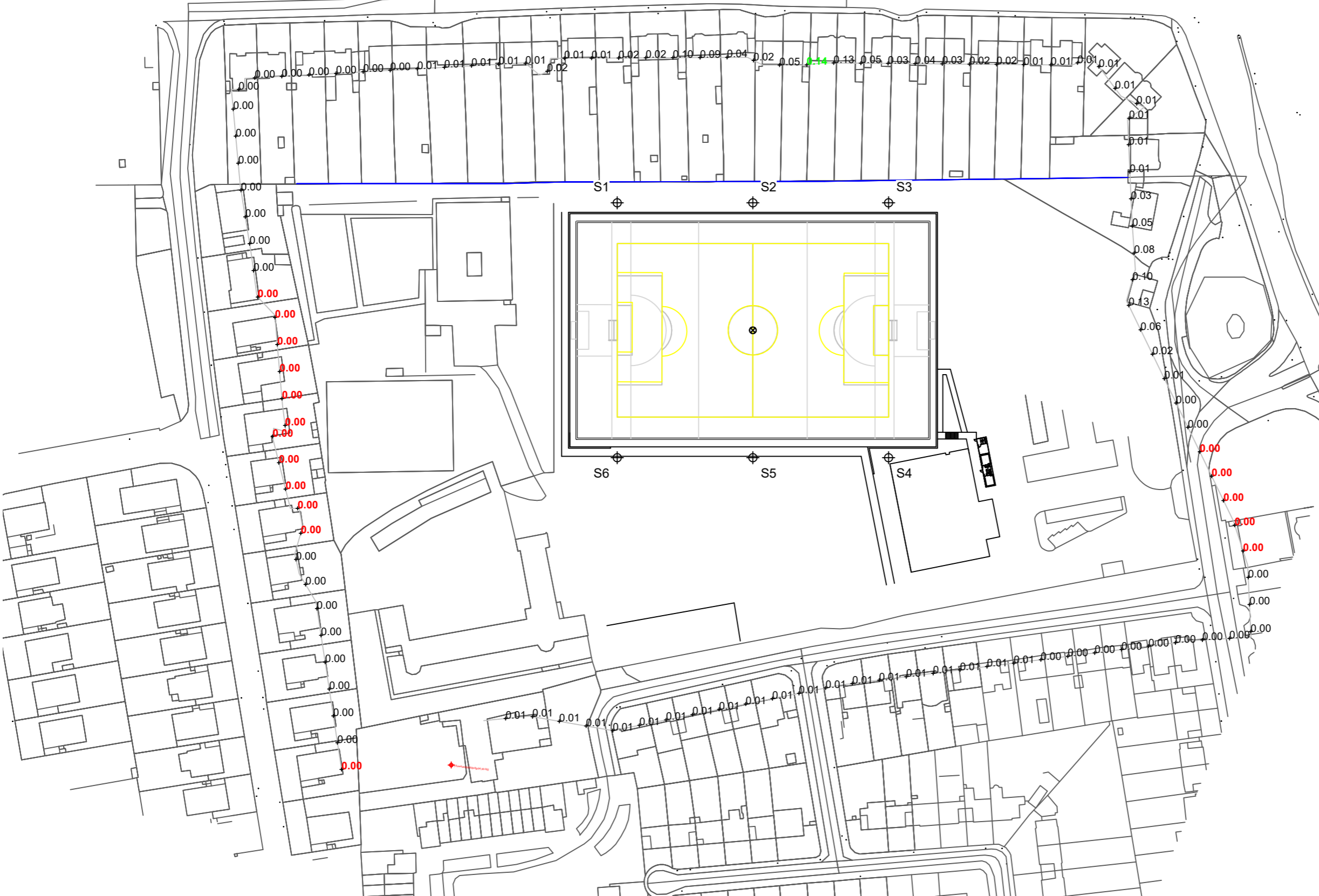
Oatlands College All Weather

Dublin, Leinster

GRID SUMMARY	
Name:	ITW
Spacing:	10.0m
Height:	1.5m above grade

ILLUMINATION SUMMARY	
MAX VERTICAL LUX	
Scan Average:	Entire Grid 0.0147
Maximum:	0.14
Minimum:	0.00
No. of Points:	112
LUMINAIRE INFORMATION	
Applied Circuits:	A
No. of Luminaires:	38
Total Load:	52.62 kW

- Guaranteed Performance:** The ILLUMINATION described above is guaranteed per your Musco Warranty document.
- Field Measurements:** Individual field measurements may vary from computer-calculated predictions and should be taken in accordance with IESNA RP-6-15.
- Electrical System Requirements:** Refer to Amperage Draw Chart and/or the "Musco Control System Summary" for electrical sizing.
- Installation Requirements:** Results assume ± 3% nominal voltage at line side of the driver and structures located within 3 feet (1m) of design locations.



Pole location(s) ⊕ dimensions are relative to 0,0 reference point(s) ⊗



We Make It Happen.

Not to be reproduced in whole or part without the written consent of Musco Sports Lighting, LLC. ©1981, 2023 Musco Sports Lighting, LLC.

Oatlands College All Weather

Dublin, Leinster

EQUIPMENT LAYOUT

INCLUDES:

- Football
- GAA

Electrical System Requirements: Refer to Amperage Draw Chart and/or the "Musco Control System Summary" for electrical sizing.

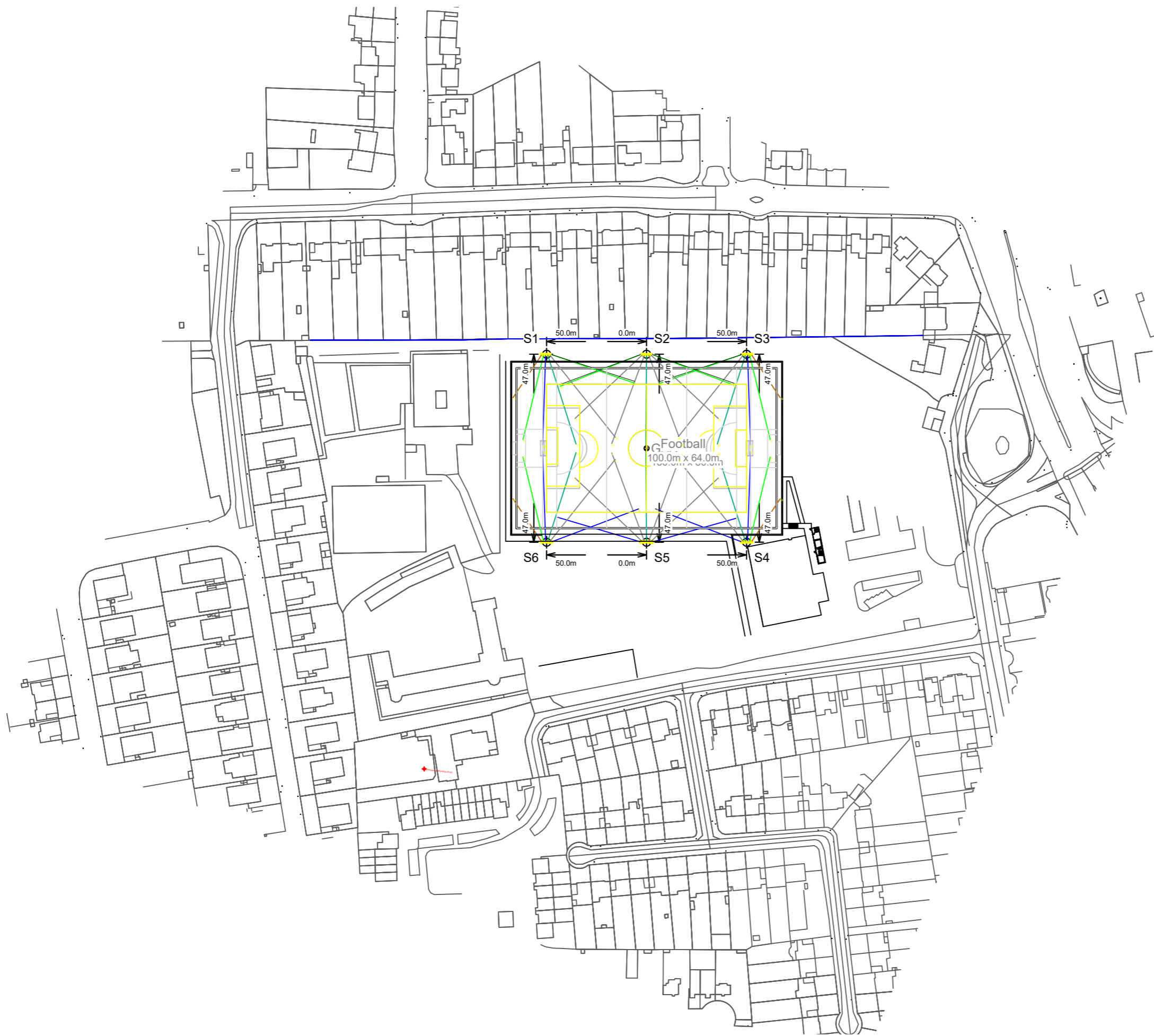
Installation Requirements: Results assume $\pm 3\%$ nominal voltage at line side of the driver and structures located within 3 feet (1m) of design locations.

EQUIPMENT LIST FOR AREAS SHOWN

QTY	Pole			Luminaires		
	LOCATION	SIZE	GRADE ELEVATION	MOUNTING HEIGHT	LUMINAIRE TYPE	QTY / POLE
1	S1	21.34m	-	21.34m	TLC-LED-1500	5
1	S2	21.34m	-	21.34m	TLC-LED-1200	1
1	S3	21.34m	-	21.34m	TLC-LED-1200	2
1		21.34m	-	21.34m	TLC-LED-1500	5
2	S4, S6	21.34m	-	21.34m	TLC-LED-1500	6
1	S5	21.34m	-	21.34m	TLC-LED-1500	7
6	TOTALS					38

SINGLE LUMINAIRE AMPERAGE DRAW CHART

Driver (.90 min power factor)	Line Amperage Per Luminaire (max draw)					
	220 (50)	230 (50)	240 (50)	380 (50)	400 (50)	415 (50)
Single Phase Voltage						
TLC-LED-1200	6.5	6.3	6.0	3.8	3.6	3.5
TLC-LED-1500	7.9	7.6	7.3	4.6	4.4	4.2



SCALE 1 : 2000
0 20m 40m

Pole location(s) ⚓ dimensions are relative to 0,0 reference point(s) ⊗



We Make It Happen.

Not to be reproduced in whole or part without the written consent of Musco Sports Lighting, LLC. ©1981, 2023 Musco Sports Lighting, LLC.