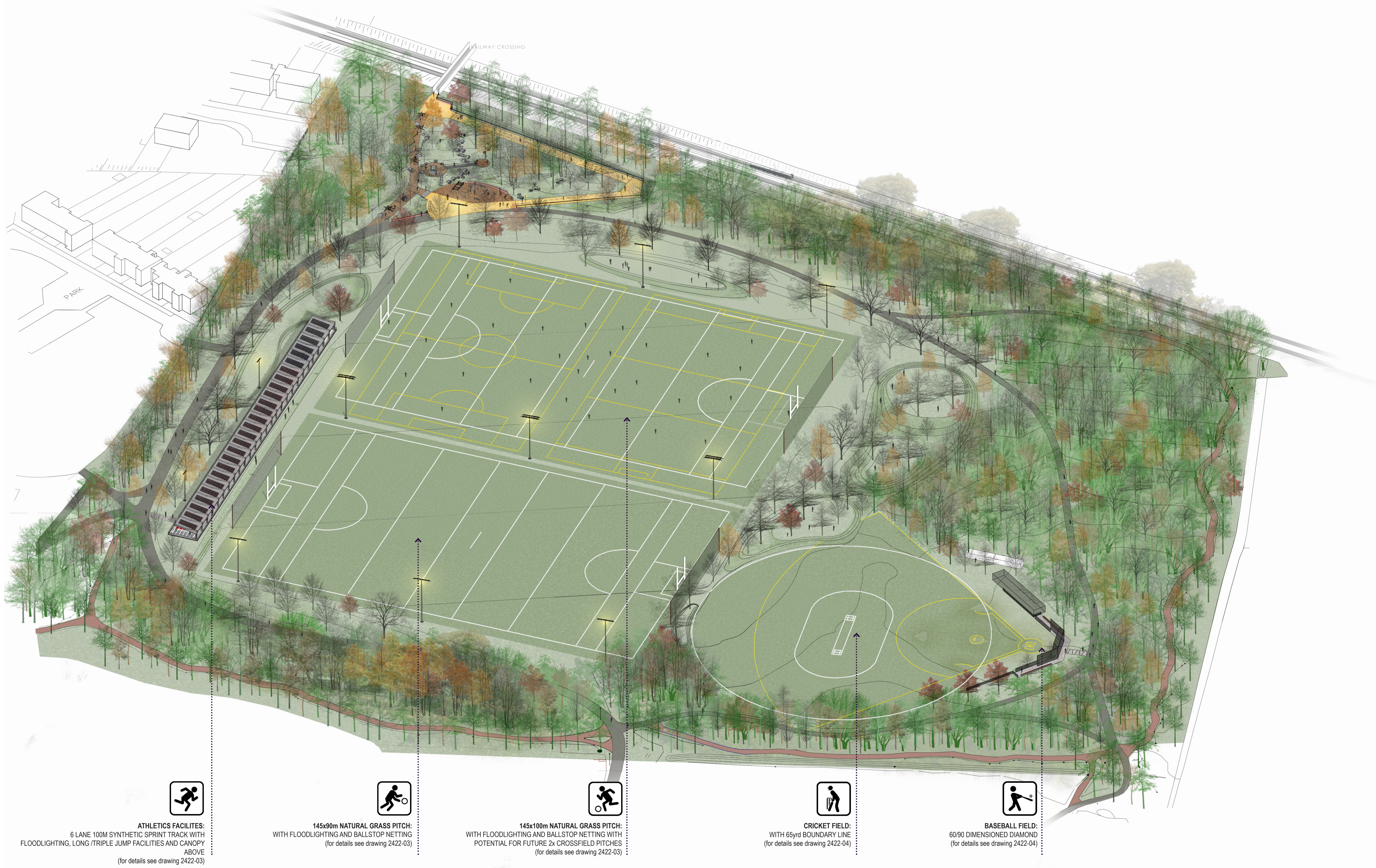


Axonometric Plan	1
General Arrangement	2
Section A-A	3
Section E-E	4
Shanganagh Park Masterplan	5



ATHLETICS FACILITIES:
6 LANE 100M SYNTHETIC SPRINT TRACK WITH
FLOODLIGHTING, LONG /TRIPLE JUMP FACILITIES AND CANOPY
ABOVE
(for details see drawing 2422-03)



145x90m NATURAL GRASS PITCH:
WITH FLOODLIGHTING AND BALLSTOP NETTING
(for details see drawing 2422-03)



145x100m NATURAL GRASS PITCH:
WITH FLOODLIGHTING AND BALLSTOP NETTING WITH
POTENTIAL FOR FUTURE 2x CROSSFIELD PITCHES
(for details see drawing 2422-03)

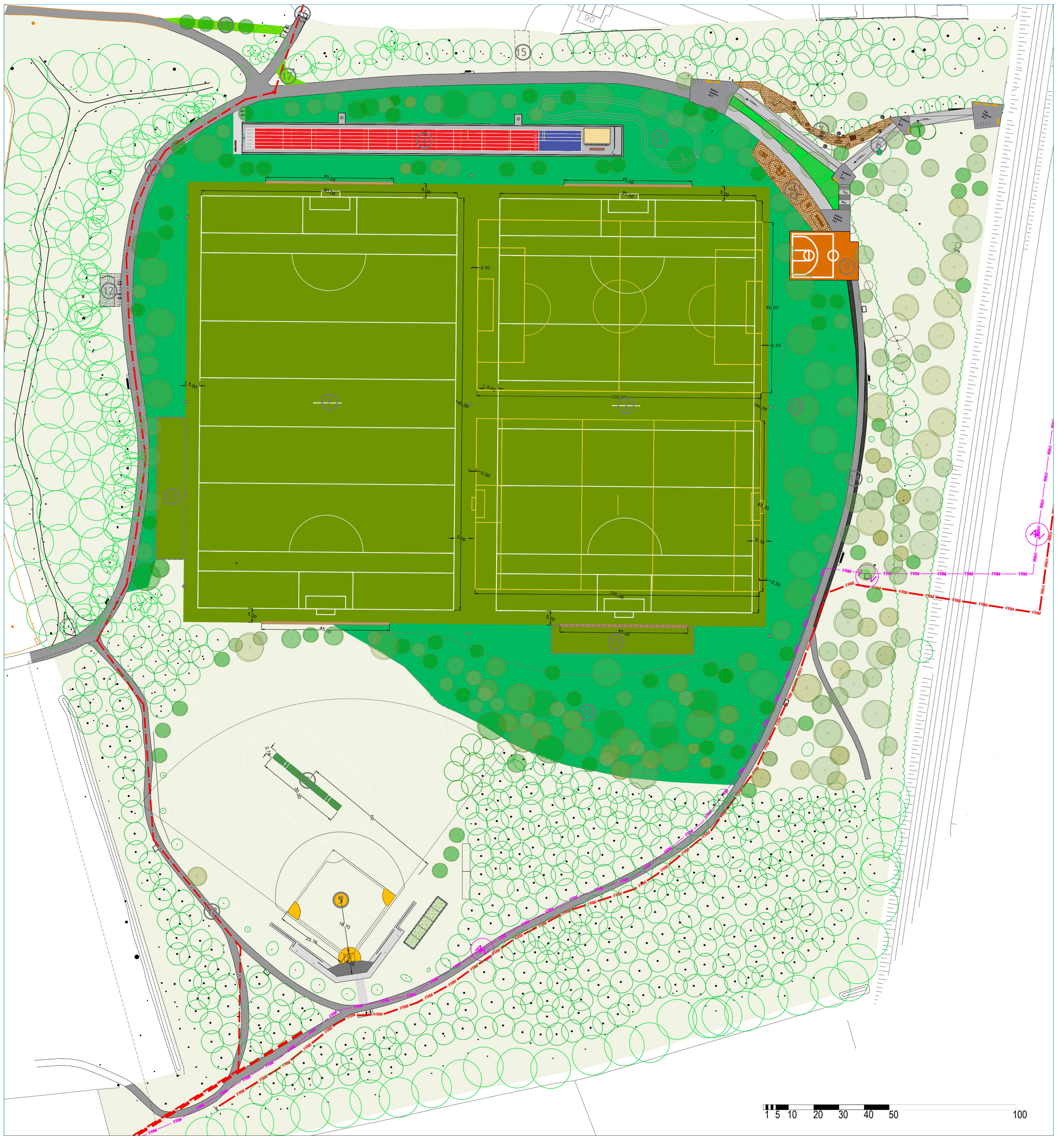


CRICKET FIELD:
WITH 65yrd BOUNDARY LINE
(for details see drawing 2422-04)

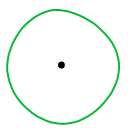
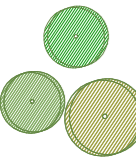



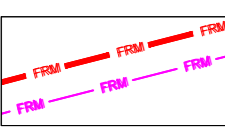


BASEBALL FIELD:
60/90 DIMENSIONED DIAMOND
(for details see drawing 2422-04)

Drawing Number:	Revision:	Scale:	Date:	Drawn:	Checked:
DRP 2422-13	0	NTS	Nov 2021	EOB/PC	ROD

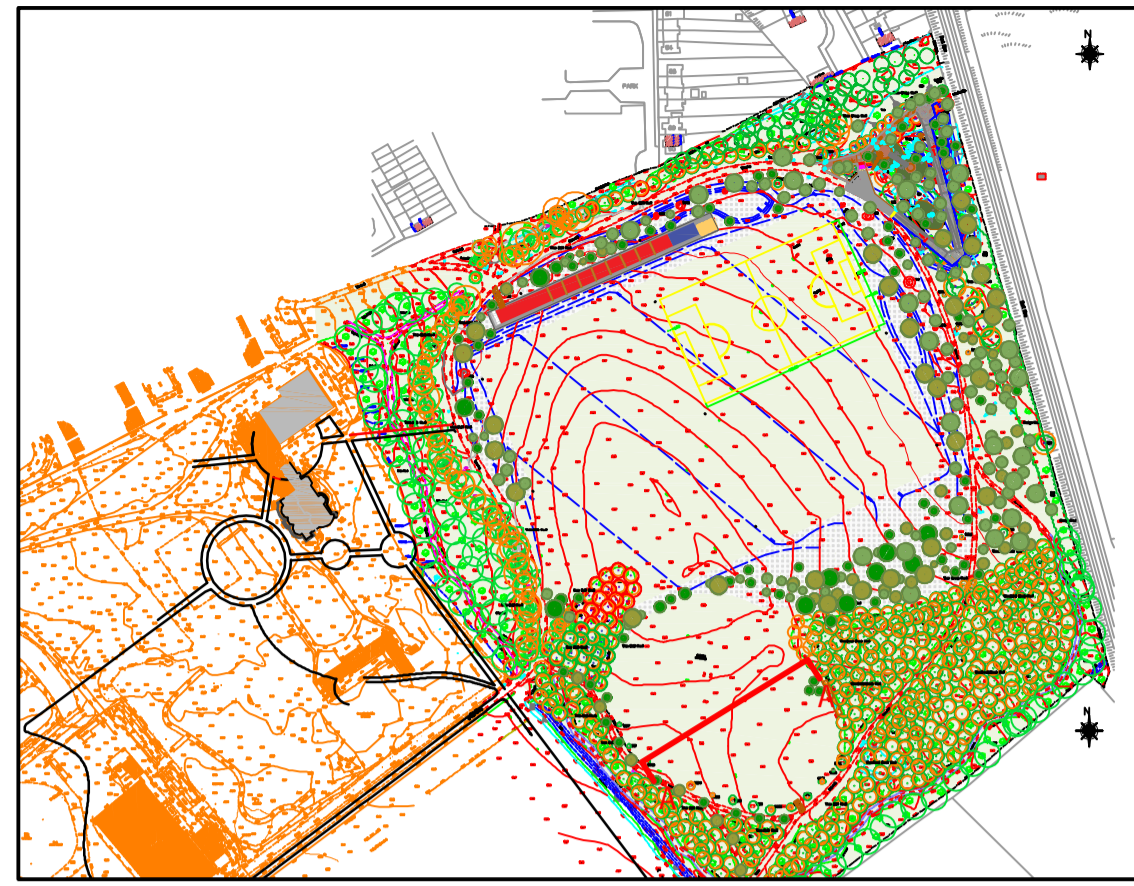


LEGEND:

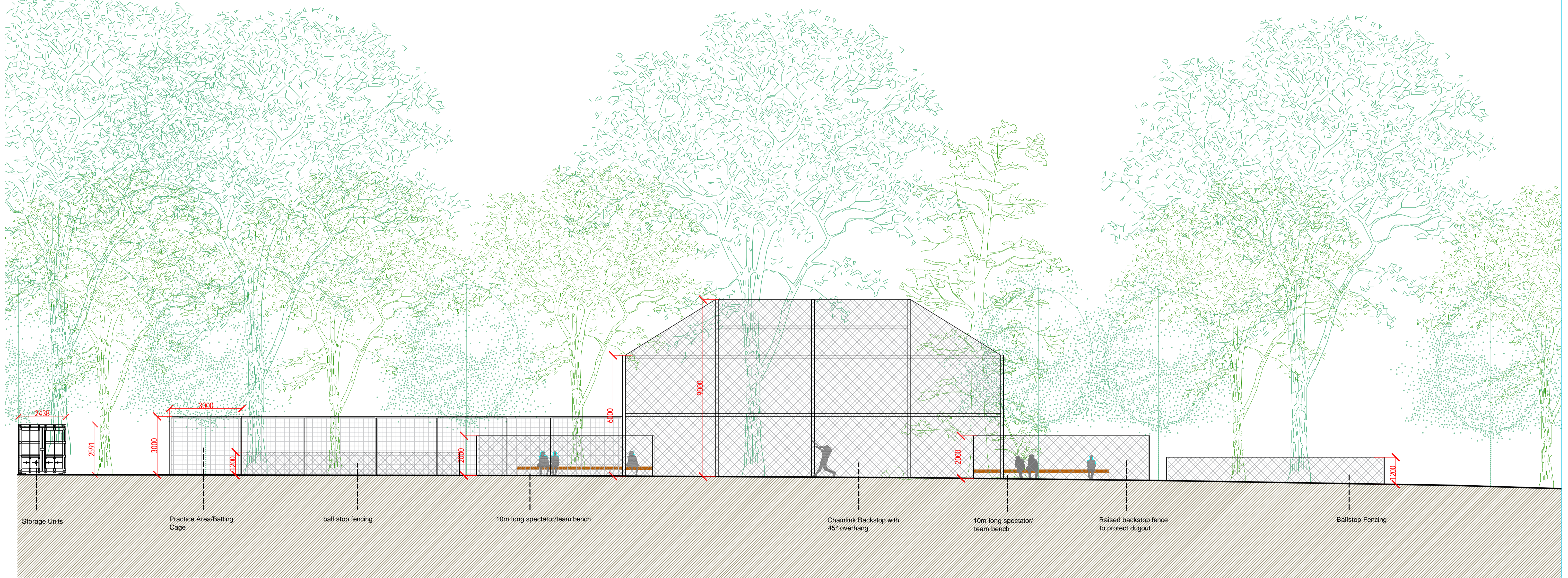
-  **EXISTING TREES**
See Tree Survey. To be read in conjunction with Drawing 2422-01
-  **PROPOSED TREE PLANTING:**
See Drawings 2422-35
-  **PROPOSED SUBSOIL AREAS:**
ALL AREAS OUTSIDE OF PITCHES AND WARM UP AREAS
-  **PROPOSED TOPSOIL AREAS:**
PITCHES AND WARMUP AREAS TO BE TOPSOILED
-  **EXISTING GRASS:**
AREA TO BE OMITTED FROM EARTH WORKS. AREAS WHERE INTERVENTIONS ARE PROPOSED IN THESE AREAS ARE TO BE REINSTATED AND REGRADED INTO EXISTING LEVELS
-  **FOUL SEWER:**
TO BE COMPLETED AFTER CONSTRUCTION OF PHASE 1 MASTERPLAN (by others)

LEGEND:

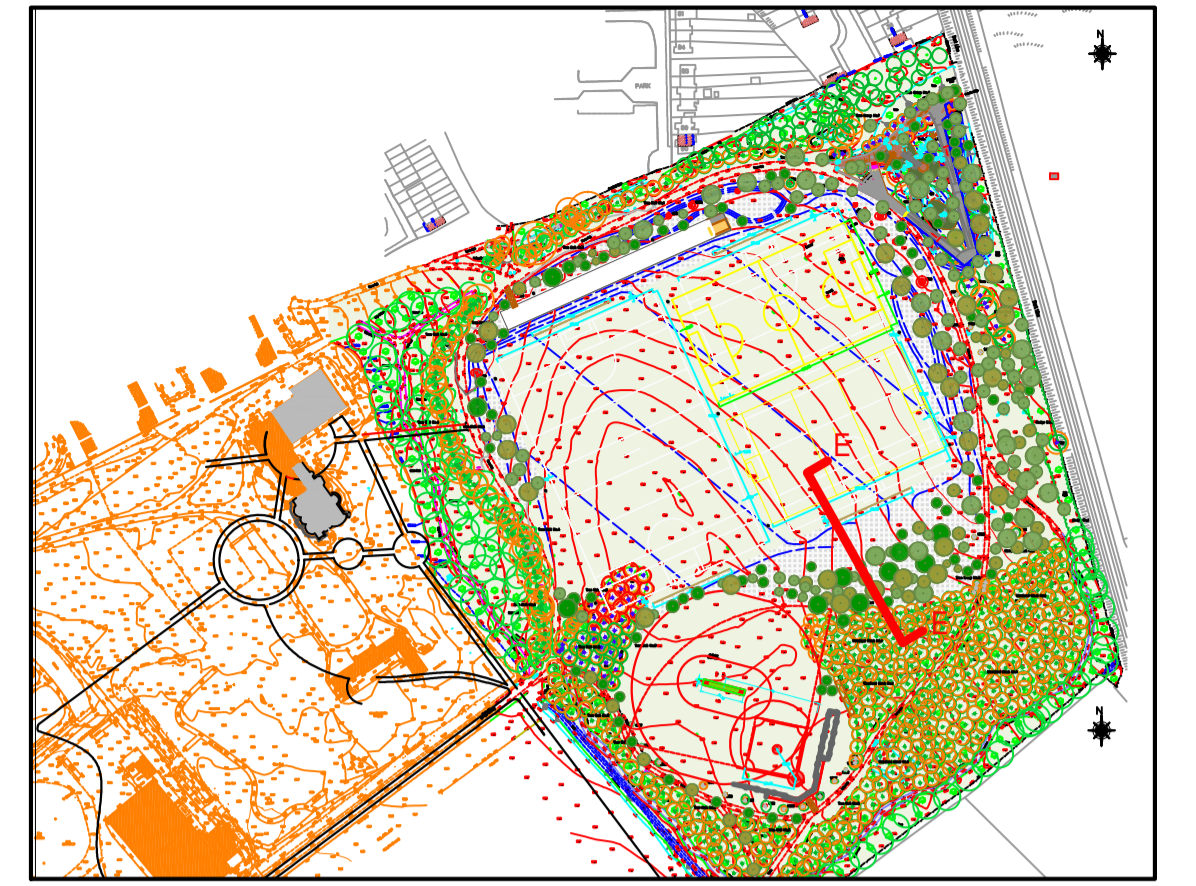
- 1. 145x100m NATURAL GRASS PITCH (for details see drawing 2422-03)
- 2. 145x90m NATURAL GRASS PITCH (for details see drawing 2422-03)
- 3. ATHLETICS FACILITIES:(for details see drawing 2422-06)
- 4. CRICKET CREASE (for details see drawing 2422-04)
- 5. BASEBALL FIELD (for details see drawing 2422-04)
- 6. RAMPED ACCESS BRIDGE CROSSING (for details see drawing 2422-05,)
- 7. PLAY AREA (for details see drawing 2422-05)
- 8. CALLISTHENICS: (for details see drawing 2422-05)
- 9. BASKETBALL HALF COURT
- 10. MOUNDS: FOR VIEWING MATCHES (for details see Engineer's Drawings)
- 11. WARM UP AREAS: (for details see drawing 2422-03)
- 12. STORAGE: (see details 2422-09 & 2422- 34)
- 13. DRAINAGE/ATTENUATION AREA: BIO-RETENTION AREA FOR WATER TO INFILTRATE INTO THE GROUND (for details see Engineer's Drawings)
- 14. PATHS: WIDEN FROM 2.5m TO 3.5m. WIDENED AREAS HIGHLIGHTED IN BLUE.(for details see drawing 2422-31)
- 15. SERVICES: WATER, SURFACE WATER, ESB (INCL. SUB-STATION)
- 16. PARK ENTRANCE: for details see drawing 2422-36)
- 17. REMOVED PATHS: PATHS TO BE REMOVED HIGHLIGHTED IN GREEN
- 18. FOUL SEWER: RISING MAIN AROUND THE WESTERN PERIMETER OF THE PITCHES TO BE COMPLETED PRIOR TO CONSTRUCTION (by others)



KEY PLAN
Scale: 1:4000 @ A1



A SECTION A-A
Scale: 1:100 @ A1



KEY PLAN
Scale: 1:4000 @ A1



A SECTION E-E
Scale: 1:100 @ A1

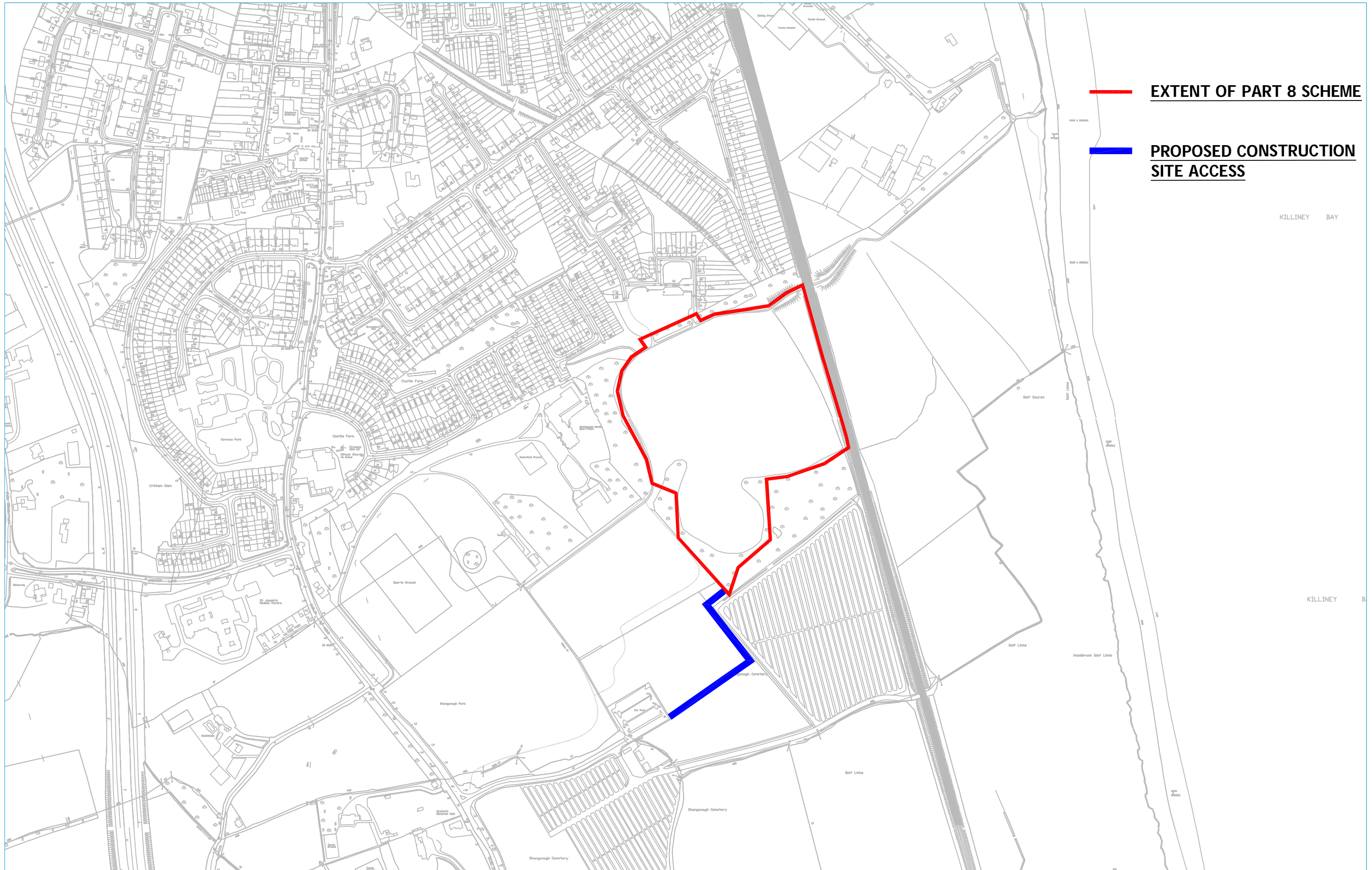
Drawing Number:	Revision:	Scale:	Date:	Drawn:	Checked:
DRP 2422-09	DRAFT	1:100 @ A1	DEC 2022	EOB/PC	ROD

SHANGANAGH PARK & CEMETERY MASTERPLAN



LEGEND

1. Entrance upgraded in line with DMURS
2. Tree lined avenue with formalised parking (31 spaces)
3. Realigned and extended car park (133 spaces incl. 4 disabled)
4. Area to include the Parks/Cemeteries dept and the recycling centre
5. Crematorium - Part 8 approved in 2016 (PC/PKS/02/16)
6. Lit corridor linkages
7. Relocated entrance piers
8. Boundary set back to invite users
9. Welland pond for stormwater attenuation with viewing deck
10. Naturalistic mounding
11. Enlarged and relocated playground to incorporate natural play
12. Existing pond
13. Existing pitch to be retained for shared use
14. Shanganagh Castle for community use to include a park tearooms
15. Formal lawn
16. Formal herbaceous garden with multi-use hard surfaced space
17. Ornamental sculpture walk with seating
18. Screen planting and mounding
19. Castle & sports parking (70 spaces incl. 4 disabled)
20. Existing building renovated as a multi-sport complex with new façade to include public toilets
21. New sand based pitches with irrigation and floodlighting - shared usage (145x90m)
22. Reinforced warm-up area for grass pitches
23. Consolidated cricket and baseball pitches
24. Upgraded pedestrian entrances from Castle Farm & St. Anne's Park
25. Upgraded bridge crossing to include natural play and extensive seating area
26. Potential location for renewable energy generation
27. Sculptural mound to provide landscape views across and towards mountains
28. Sculpture installation (Cliff markers)
29. Improved access to Shanganagh beach
30. Proposed 'green' bridge
31. Potential Eastcoast Greenway route
32. Woodbrook residential development - indicative layout only
33. Proposed Woodbrook DART station with surface car parking - indicative layout only
34. Shanganagh Castle residential development - indicative layout only
35. Four lane sprint track with potential long and triple jump pit
36. Enlarged and improved dogs-off-leash area
37. Deter haphazard car parking in neighbouring estate

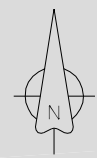


— EXTENT OF PART 8 SCHEME

— PROPOSED CONSTRUCTION SITE ACCESS

KILLINEY BAY

KILLINEY B



Do not scale from this drawing. Use figured dimensions only. Check all dimensions on site before commencing works. Report any discrepancies to the ER before proceeding. All levels to be clarified on site by the ER. These drawings and designs thereon are copyright of Dun Laoghaire Rathdown County Council.

Drawing Title:
SHANGANAGH PARK MASTERPLAN - PHASE 1
Site Location Plan

Senior Parks Superintendent : Ruairi O'Dulaing
County Hall, Dun Laoghaire, Co. Dublin.

Drawing Number:

DRP 2422-01

Revision:

DRAFT

Scale:

1/5000 @ A3

Date:

DEC 2022

Drawn:

EOB/PC

Checked:

ROD