

# Shanganagh Park Phase 1

Dublin, Leinster

## Lighting System

Pole/Fixture Summary						
Pole ID	Pole Height	Mtg Height	Fixture Qty	Luminaire Type	Load	Circuit
P10	15.2 m	15.2 m	1	TLC-LED-900	0.89 kW	C
		15.2 m	3	TLC-LED-900	2.64 kW	C
P11	15.2 m	15.2 m	1	TLC-LED-900	0.89 kW	C
		15.2 m	2	TLC-LED-900	1.76 kW	C
<b>2</b>			<b>7</b>		<b>6.18 kW</b>	

Circuit Summary			
Circuit	Description	Load	Fixture Qty
C	Track	6.18 kW	7

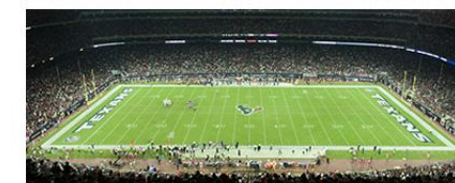
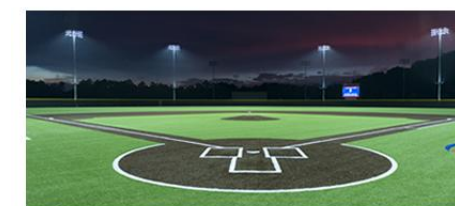
Fixture Type Summary							
Type	Source	Wattage	Lumens	L90	L80	L70	Quantity
TLC-LED-900	LED 4000K - 70 CRI	880W	104,000	>120,000	>120,000	>120,000	5
TLC-LED-900	LED 4000K - 70 CRI	890W	89,600	>120,000	>120,000	>120,000	2

Single Luminaire Amperage Draw Chart						
Driver Specifications (.90 min power factor)	Line Amperage Per Luminaire (max draw)					
	220	230	240	380	400	415
Single Phase Voltage	(50)	(50)	(50)	(50)	(50)	(50)
TLC-LED-900	4.9	4.7	4.5	2.9	2.7	2.6

## Light Level Summary

Calculation Grid Summary									
Grid Name	Calculation Metric	Illumination					Circuits	Fixture Qty	
		Ave	Min	Max	Min/Max	Min/Ave			
Spill Blanket 1m	Horizontal	8.99	0	380	0.00	0.00	A,B,C,D	7	
Spill Blanket 1m 50%	Horizontal	4.92	0	208	0.00	0.00	A,B,C,D	7	
Spill Blanket 2m	Horizontal	8.94	0	436	0.00	0.00	A,B,C,D	7	
Spill Blanket 2m 50%	Horizontal	4.89	0	239	0.00	0.00	A,B,C,D	7	
Spill line 1m	Horizontal	0.10	0	1	0.00	0.00	A,B,C,D	7	
Spill line 1m 50%	Horizontal	0.06	0	1	0.00	0.00	A,B,C,D	7	
Spill line 2m	Horizontal	0.07	0	1	0.00	0.00	A,B,C,D	7	
Spill line 2m 50%	Horizontal	0.04	0	0	0.00	0.00	A,B,C,D	7	
Track	Horizontal Illuminance	268	174	565	0.31	0.65	C	7	

## From Hometown to Professional



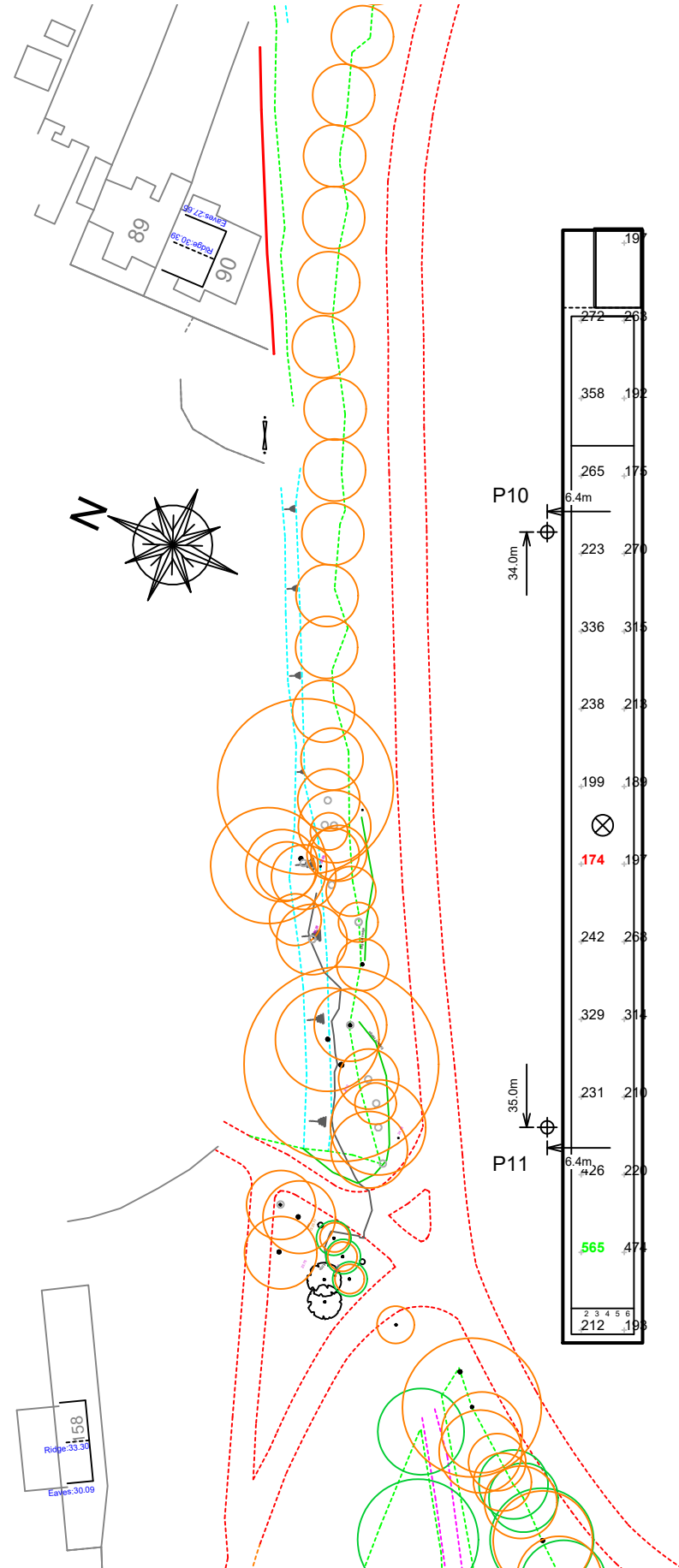
**We Make It Happen.**

Not to be reproduced in whole or part without the written consent of Musco Sports Lighting, LLC. ©1981, 2023 Musco Sports Lighting, LLC.

Equipment List For Areas Shown

Pole				Luminaires				
QTY	LOCATION	SIZE	GRADE ELEVATION	ABOVE GRADE LEVEL	LUMINAIRE TYPE	QTY/POLE	THIS GRID	OTHER GRIDS
1	P10	15.24m	-	15.25m	TLC-LED-900	4	4	0
1	P11	15.24m	-	15.25m	TLC-LED-900	3	3	0
2	Totals					7	7	0

\*Above Grade level relative to the field



Pole location(s) ⊕ dimensions are relative to 0,0 reference point(s) ⊗

# Shanganagh Park Phase 1

Dublin, Leinster

## Grid Summary

<b>Name</b>	Track
<b>Size</b>	9.3m x 129.0m
<b>Spacing</b>	5.0m x 9.0m
<b>Height</b>	1.0m above grade

## Illumination Summary

	MAINTAINED HORIZONTAL LUX
<b>Entire Grid</b>	
<b>Guaranteed Average</b>	<b>200</b>
Scan Average	267.60
Maximum	565
Minimum	174
<b>Guaranteed Min/Avg</b>	<b>0.6</b>
Min/Avg	0.65
<b>Min/Max</b>	<b>0.31</b>
UG (adjacent pts)	2.66
CU	0.52
No. of Points	29
<b>LUMINAIRE INFORMATION</b>	
Applied Circuits	C
<b>No. of Luminaires</b>	<b>7</b>
Total Load	6.18 kW

**Guaranteed Performance:** The ILLUMINATION described above is guaranteed per your Musco Warranty document and includes a 0.95 dirt depreciation factor.

**Field Measurements:** Individual field measurements may vary from computer-calculated predictions and should be taken in accordance with IESNA RP-6-15.

**Electrical System Requirements:** Refer to Amperage Draw Chart and/or the "Musco Control System Summary" for electrical sizing.

**Installation Requirements:** Results assume ± 3% nominal voltage at line side of the driver and structures located within 3 feet (1m) of design locations.

SCALE IN METERS 1 : 750



9 Best No. 4



**We Make It Happen.**

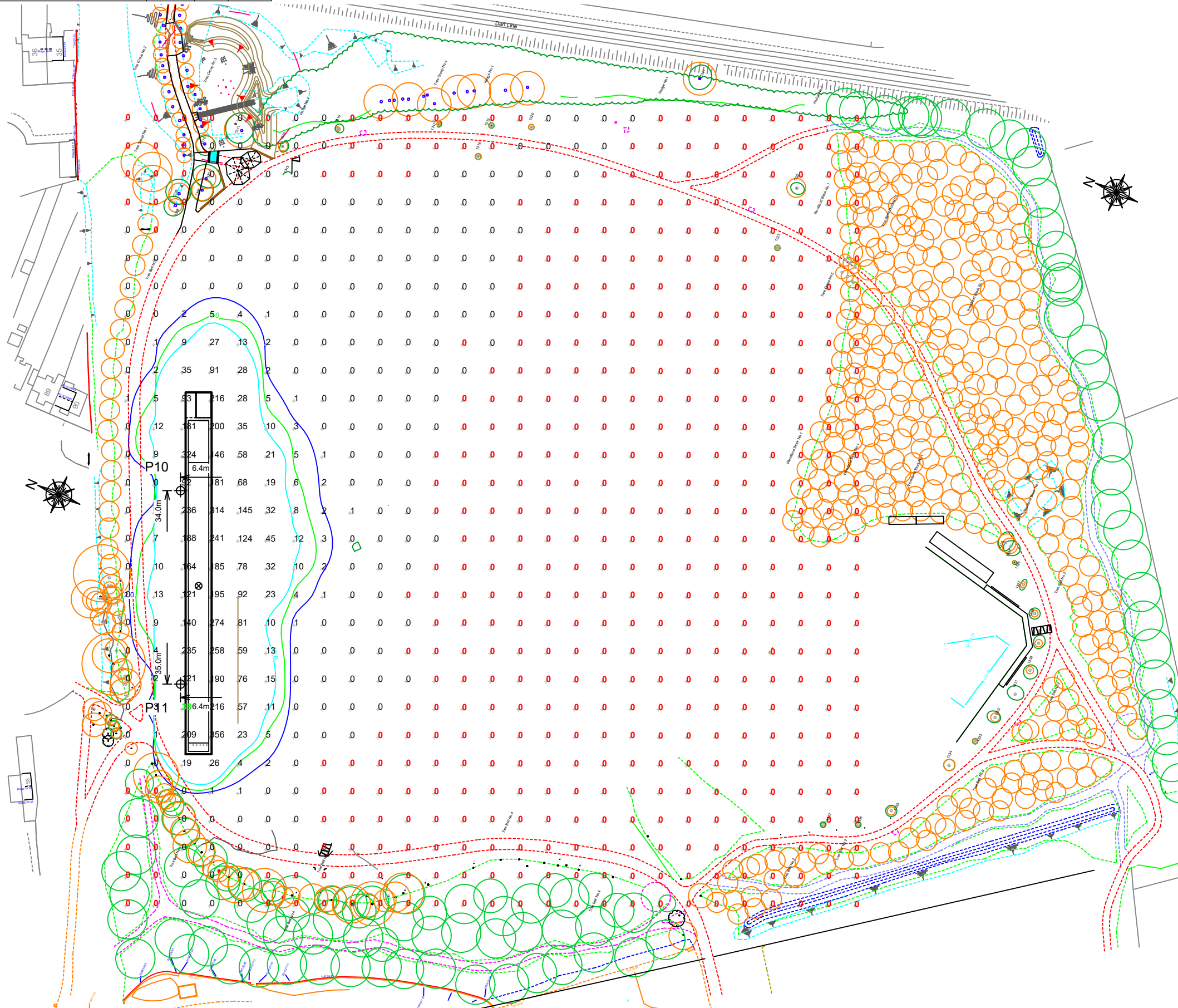
Not to be reproduced in whole or part without the written consent of Musco Sports Lighting, LLC. ©1981, 2023 Musco Sports Lighting, LLC.

## ILLUMINATION SUMMARY

Equipment List For Areas Shown

Pole				Luminaires				
QTY	LOCATION	SIZE	GRADE ELEVATION	ABOVE GRADE LEVEL	LUMINAIRE TYPE	QTY/POLE	THIS GRID	OTHER GRIDS
1	P10	15.24m	-	15.25m	TLC-LED-900	4	4	0
1	P11	15.24m	-	15.25m	TLC-LED-900	3	3	0
2				Totals		7	7	0

\*Above Grade level relative to the field



Shanganagh Park Phase 1

Dublin, Leinster

Grid Summary

Name **Spill Blanket 1m**  
 Size 9.3m x 129.0m  
 Spacing 10.0m x 10.0m  
 Height 1.0m above grade

Illumination Summary

	ENTIRE GRID	MAINTAINED HORIZONTAL LUX
Scan Average	8.99	
Maximum	380	
Minimum	0	
Min/Avg	0.00	
Min/Max	0.00	
UG (adjacent pts)	2452.34	
CU	0.99	
No. of Points	783	
<b>LUMINAIRE INFORMATION</b>		
Applied Circuits	A,B,C,D	
No. of Luminaires	7	
Total Load	6.18 kW	

**Guaranteed Performance:** The ILLUMINATION described above is guaranteed per your Musco Warranty document and includes a 0.95 dirt depreciation factor.

**Field Measurements:** Individual field measurements may vary from computer-calculated predictions and should be taken in accordance with IESNA RP-6-15.

**Electrical System Requirements:** Refer to Amperage Draw Chart and/or the "Musco Control System Summary" for electrical sizing.

**Installation Requirements:** Results assume ± 3% nominal voltage at line side of the driver and structures located within 3 feet (1m) of design locations.

SCALE IN METERS 1 : 1500

0m 75m 150m  
 ENGINEERED DESIGN By: H.Sabers • File #214399K-TrackOnly • 10-Jan-24

Pole location(s) ⊕ dimensions are relative to 0,0 reference point(s) ⊗



We Make It Happen.

Not to be reproduced in whole or part without the written consent of Musco Sports Lighting, LLC. ©1981, 2023 Musco Sports Lighting, LLC.

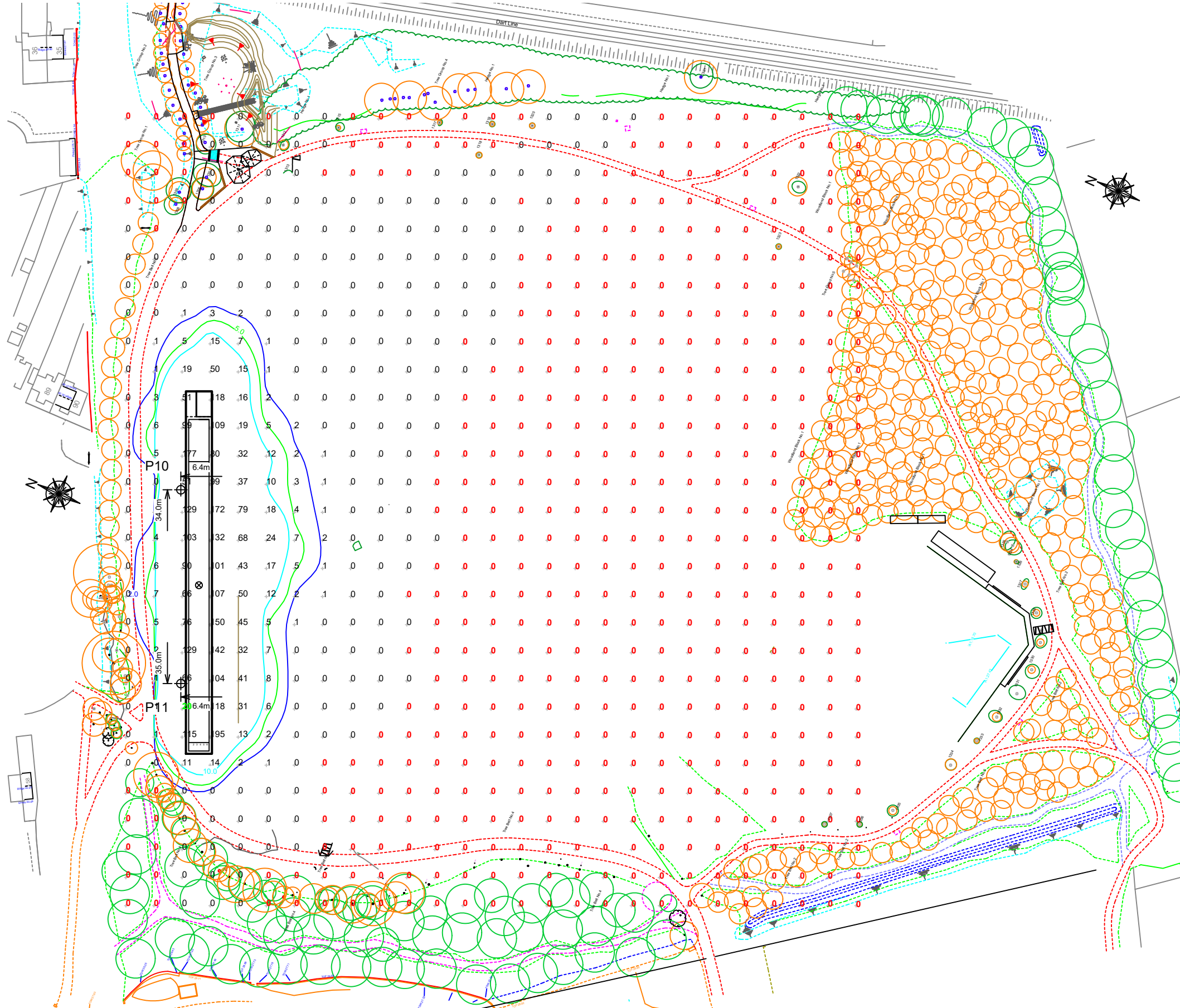
ILLUMINATION SUMMARY



Equipment List For Areas Shown

Pole				Luminaires				
QTY	LOCATION	SIZE	GRADE ELEVATION	ABOVE GRADE LEVEL	LUMINAIRE TYPE	QTY/POLE	THIS GRID	OTHER GRIDS
1	P10	15.24m	-	15.25m	TLC-LED-900	4	4	0
1	P11	15.24m	-	15.25m	TLC-LED-900	3	3	0
2				Totals		7	7	0

\*Above Grade level relative to the field



Shanganagh Park Phase 1  
Dublin, Leinster

**Grid Summary**

Name	Spill Blanket 1m 50%
Size	9.3m x 129.0m
Spacing	10.0m x 10.0m
Height	1.0m above grade

**Illumination Summary**

	Entire Grid
Scan Average	4.92
Maximum	208
Minimum	0
Min/Avg	0.00
Min/Max	0.00
UG (adjacent pts)	1024.71
CU	0.99
No. of Points	783
<b>LUMINAIRE INFORMATION</b>	
Applied Circuits	A,B,C,D
No. of Luminaires	7
Total Load	6.18 kW

**Guaranteed Performance:** The ILLUMINATION described above is guaranteed per your Musco Warranty document and includes a 0.95 dirt depreciation factor.

**Field Measurements:** Individual field measurements may vary from computer-calculated predictions and should be taken in accordance with IESNA RP-6-15.

**Electrical System Requirements:** Refer to Amperage Draw Chart and/or the "Musco Control System Summary" for electrical sizing.

**Installation Requirements:** Results assume ± 3% nominal voltage at line side of the driver and structures located within 3 feet (1m) of design locations.

Pole location(s) ⊕ dimensions are relative to 0,0 reference point(s) ⊗



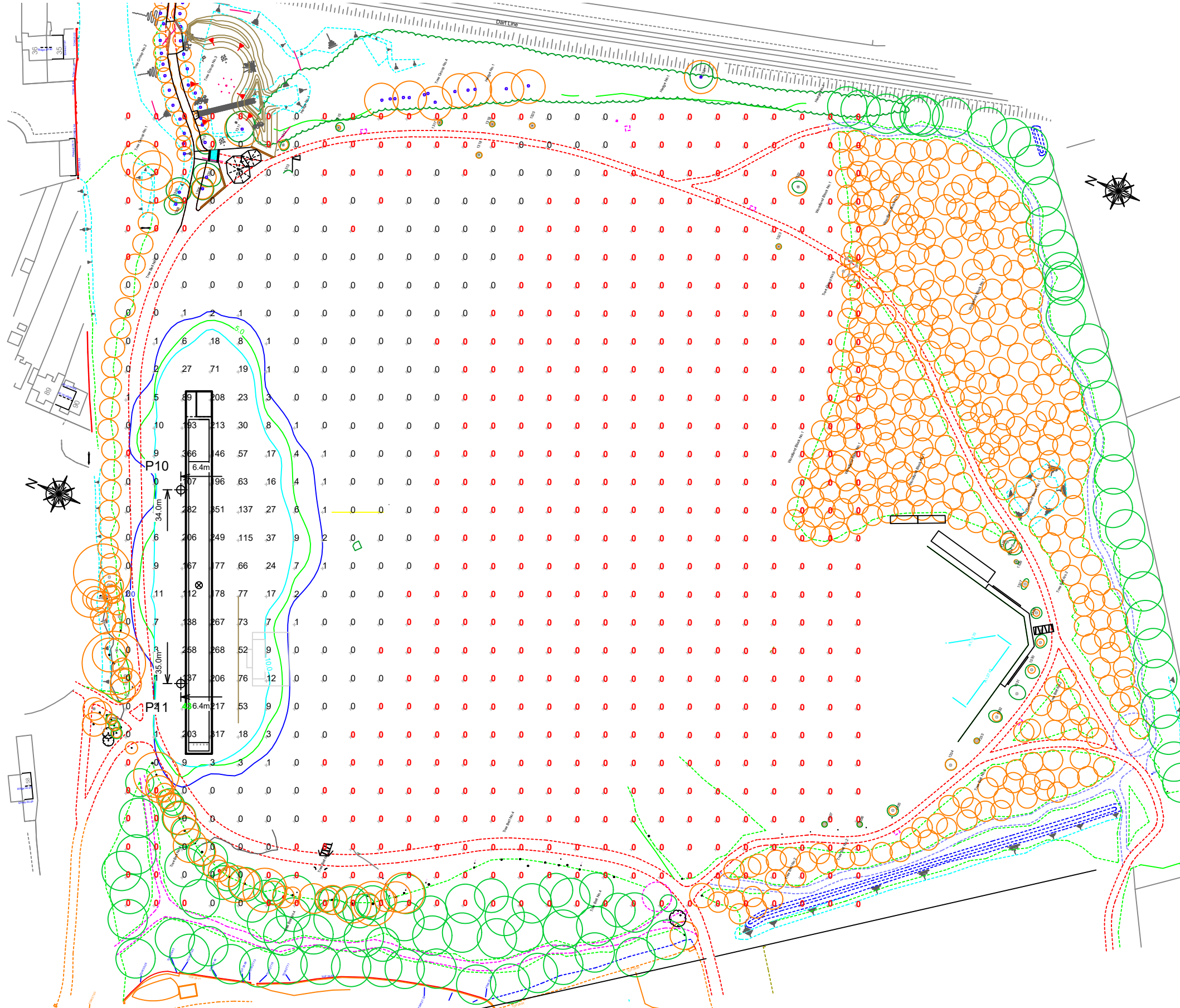
Not to be reproduced in whole or part without the written consent of Musco Sports Lighting, LLC. ©1981, 2023 Musco Sports Lighting, LLC.

ILLUMINATION SUMMARY

**Equipment List For Areas Shown**

Pole				Luminaires				
QTY	LOCATION	SIZE	GRADE ELEVATION	ABOVE GRADE LEVEL	LUMINAIRE TYPE	QTY/POLE	THIS GRID	OTHER GRIDS
1	P10	15.24m	-	15.25m	TLC-LED-900	4	4	0
1	P11	15.24m	-	15.25m	TLC-LED-900	3	3	0
2				Totals		7	7	0

\*Above Grade level relative to the field



**Shanganagh Park Phase 1**

Dublin, Leinster

**Grid Summary**

Name **Spill Blanket 2m**  
 Size 9.3m x 129.0m  
 Spacing 10.0m x 10.0m  
 Height 2.0m above grade

**Illumination Summary**

	ENTIRE GRID	MAINTAINED HORIZONTAL LUX
Scan Average	<b>8.94</b>	
Maximum	436	
Minimum	0	
Min/Avg	0.00	
Min/Max	<b>0.00</b>	
UG (adjacent pts)	9492.01	
CU	0.98	
No. of Points	783	
<b>LUMINAIRE INFORMATION</b>		
Applied Circuits	A,B,C,D	
No. of Luminaires	7	
Total Load	6.18 kW	

**Guaranteed Performance:** The ILLUMINATION described above is guaranteed per your Musco Warranty document and includes a 0.95 dirt depreciation factor.

**Field Measurements:** Individual field measurements may vary from computer-calculated predictions and should be taken in accordance with IESNA RP-6-15.

**Electrical System Requirements:** Refer to Amperage Draw Chart and/or the "Musco Control System Summary" for electrical sizing.

**Installation Requirements:** Results assume ± 3% nominal voltage at line side of the driver and structures located within 3 feet (1m) of design locations.

SCALE IN METERS 1 : 1500

0m 75m 150m  
 ENGINEERED DESIGN By: H.Sabers • File #214399K-TrackOnly • 10-Jan-24

Pole location(s) ⊕ dimensions are relative to 0,0 reference point(s) ⊗



**We Make It Happen.**

Not to be reproduced in whole or part without the written consent of Musco Sports Lighting, LLC. ©1981, 2023 Musco Sports Lighting, LLC.

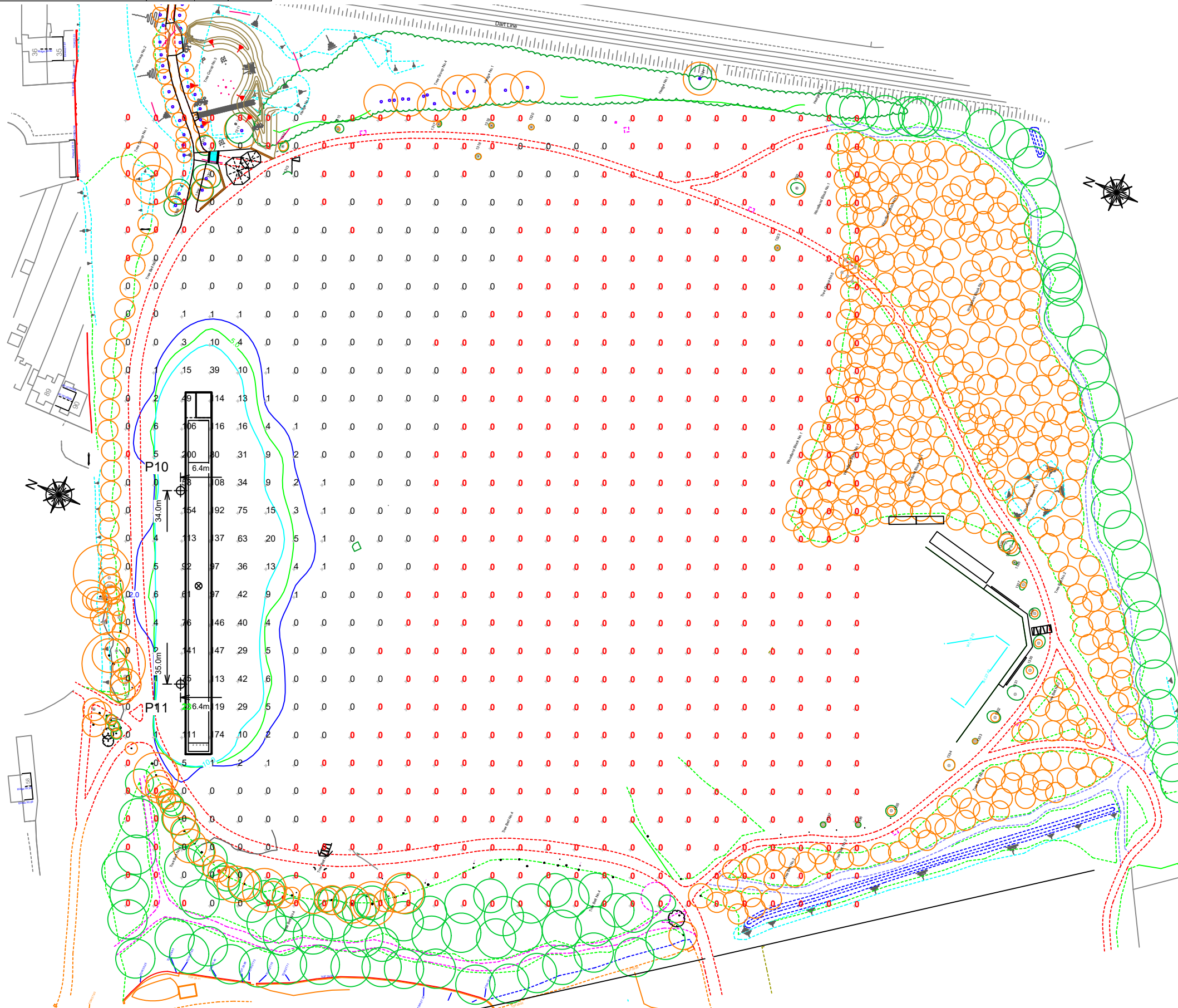
**ILLUMINATION SUMMARY**



Equipment List For Areas Shown

Pole				Luminaires				
QTY	LOCATION	SIZE	GRADE ELEVATION	ABOVE GRADE LEVEL	LUMINAIRE TYPE	QTY/POLE	THIS GRID	OTHER GRIDS
1	P10	15.24m	-	15.25m	TLC-LED-900	4	4	0
1	P11	15.24m	-	15.25m	TLC-LED-900	3	3	0
2				Totals		7	7	0

\*Above Grade level relative to the field



Shanganagh Park Phase 1  
Dublin, Leinster

Grid Summary	
Name	Spill Blanket 2m 50%
Size	9.3m x 129.0m
Spacing	10.0m x 10.0m
Height	2.0m above grade

Illumination Summary	
	MAINTAINED HORIZONTAL LUX
Entire Grid	
Scan Average	4.89
Maximum	239
Minimum	0
Min/Avg	0.00
Min/Max	0.00
UG (adjacent pts)	2047.27
CU	0.98
No. of Points	783
<b>LUMINAIRE INFORMATION</b>	
Applied Circuits	A,B,C,D
No. of Luminaires	7
Total Load	6.18 kW

**Guaranteed Performance:** The ILLUMINATION described above is guaranteed per your Musco Warranty document and includes a 0.95 dirt depreciation factor.

**Field Measurements:** Individual field measurements may vary from computer-calculated predictions and should be taken in accordance with IESNA RP-6-15.

**Electrical System Requirements:** Refer to Amperage Draw Chart and/or the "Musco Control System Summary" for electrical sizing.

**Installation Requirements:** Results assume ± 3% nominal voltage at line side of the driver and structures located within 3 feet (1m) of design locations.

SCALE IN METERS 1 : 1500

0m 75m 150m  
ENGINEERED DESIGN By: H.Sabers • File #214399K-TrackOnly • 10-Jan-24

Pole location(s) ⊕ dimensions are relative to 0,0 reference point(s) ⊗



We Make It Happen.

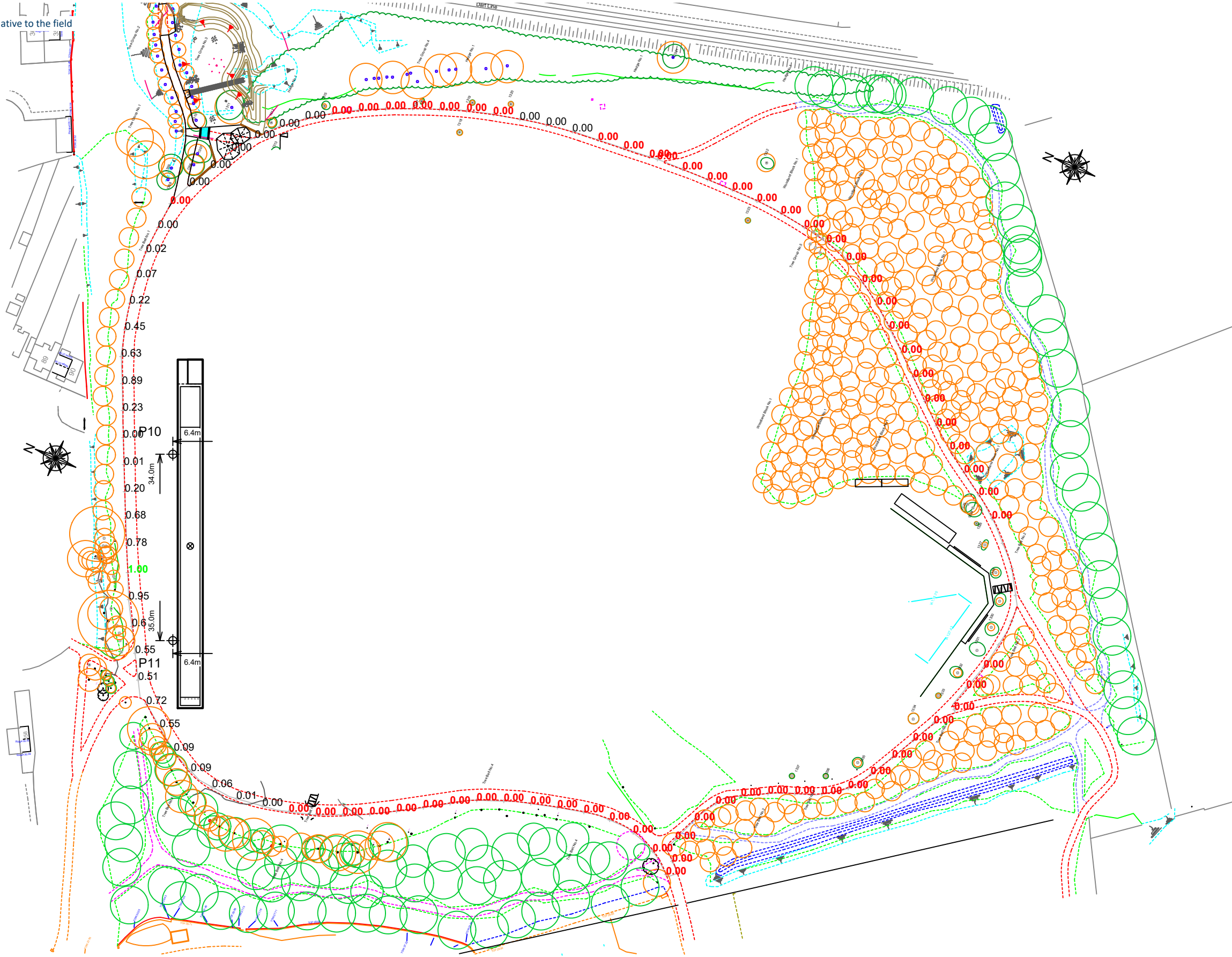
Not to be reproduced in whole or part without the written consent of Musco Sports Lighting, LLC. ©1981, 2023 Musco Sports Lighting, LLC.

ILLUMINATION SUMMARY

Equipment List For Areas Shown

Pole				Luminaires				
QTY	LOCATION	SIZE	GRADE ELEVATION	ABOVE GRADE LEVEL	LUMINAIRE TYPE	QTY/POLE	THIS GRID	OTHER GRIDS
1	P10	15.24m	-	15.25m	TLC-LED-900	4	4	0
1	P11	15.24m	-	15.25m	TLC-LED-900	3	3	0
2				Totals		7	7	0

\*Above Grade level relative to the field



Shanganagh Park Phase 1  
Dublin, Leinster

**Grid Summary**

Name	Spill line 1m
Size	9.3m x 129.0m
Spacing	10.0m x 10.0m
Height	1.0m above grade

**Illumination Summary**

	Entire Grid
Scan Average	0.10
Maximum	1
Minimum	0
Min/Avg	0.00
Min/Max	0.00
UG (adjacent pts)	0.00
CU	0.00
No. of Points	102
<b>LUMINAIRE INFORMATION</b>	
Applied Circuits	A,B,C,D
No. of Luminaires	7
Total Load	6.18 kW

**Guaranteed Performance:** The ILLUMINATION described above is guaranteed per your Musco Warranty document and includes a 0.95 dirt depreciation factor.

**Field Measurements:** Individual field measurements may vary from computer-calculated predictions and should be taken in accordance with IESNA RP-6-15.

**Electrical System Requirements:** Refer to Amperage Draw Chart and/or the "Musco Control System Summary" for electrical sizing.

**Installation Requirements:** Results assume ± 3% nominal voltage at line side of the driver and structures located within 3 feet (1m) of design locations.

Pole location(s) ⊕ dimensions are relative to 0,0 reference point(s) ⊗



Not to be reproduced in whole or part without the written consent of Musco Sports Lighting, LLC. ©1981, 2023 Musco Sports Lighting, LLC.

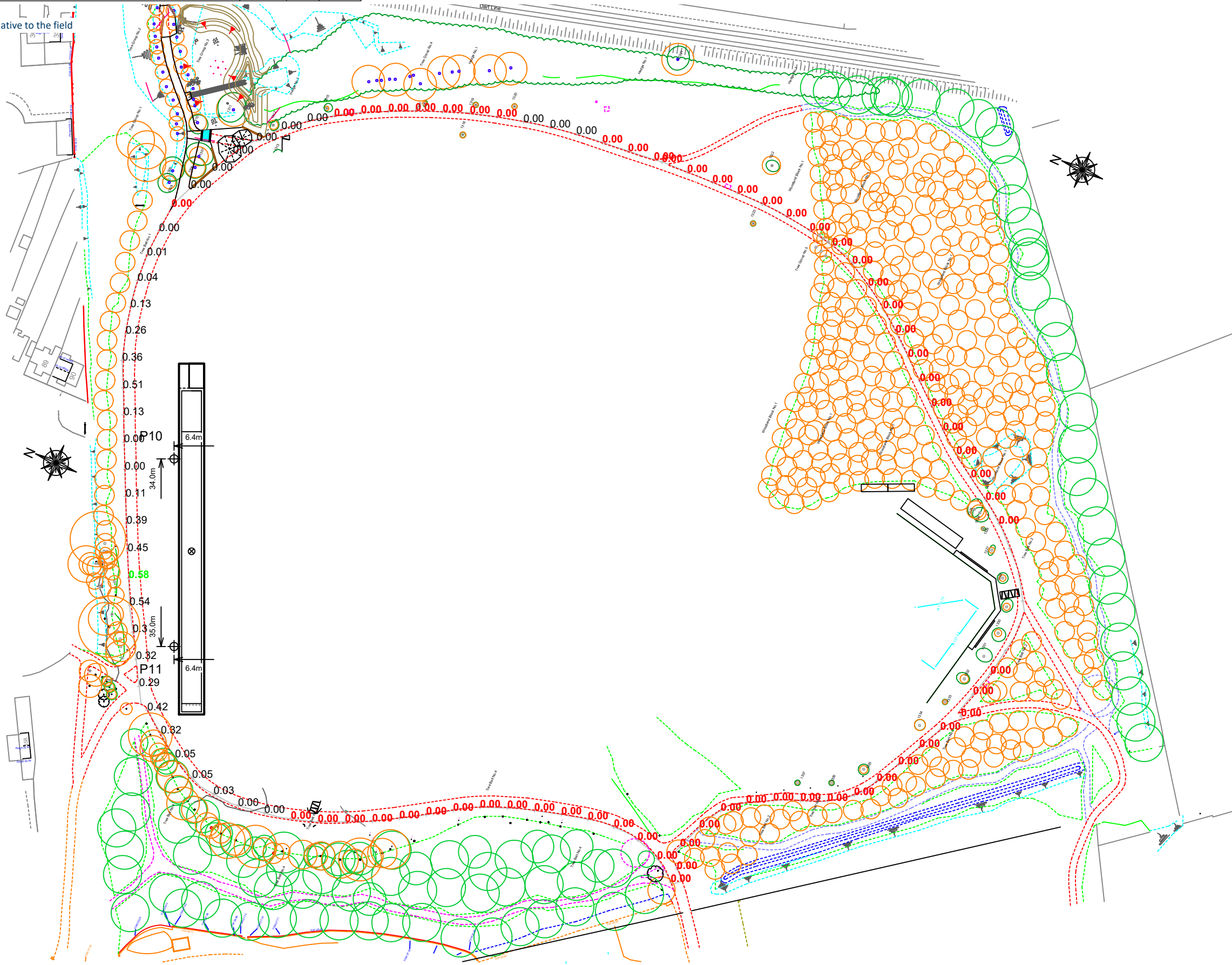
ILLUMINATION SUMMARY



**Equipment List For Areas Shown**

Pole				Luminaires				
QTY	LOCATION	SIZE	GRADE ELEVATION	ABOVE GRADE LEVEL	LUMINAIRE TYPE	QTY/POLE	THIS GRID	OTHER GRIDS
1	P10	15.24m	-	15.25m	TLC-LED-900	4	4	0
1	P11	15.24m	-	15.25m	TLC-LED-900	3	3	0
2				Totals		7	7	0

\*Above Grade level relative to the field



**Shanganagh Park Phase 1**  
Dublin, Leinster

Grid Summary	
Name	Spill line 1m 50%
Size	9.3m x 129.0m
Spacing	10.0m x 10.0m
Height	1.0m above grade

Illumination Summary	
MAINTAINED HORIZONTAL LUX	
Entire Grid	
Scan Average	0.06
Maximum	1
Minimum	0
Min/Avg	0.00
Min/Max	0.00
UG (adjacent pts)	0.00
CU	0.00
No. of Points	102
<b>LUMINAIRE INFORMATION</b>	
Applied Circuits	A,B,C,D
No. of Luminaires	7
Total Load	6.18 kW

**Guaranteed Performance:** The ILLUMINATION described above is guaranteed per your Musco Warranty document and includes a 0.95 dirt depreciation factor.

**Field Measurements:** Individual field measurements may vary from computer-calculated predictions and should be taken in accordance with IESNA RP-6-15.

**Electrical System Requirements:** Refer to Amperage Draw Chart and/or the "Musco Control System Summary" for electrical sizing.

**Installation Requirements:** Results assume ± 3% nominal voltage at line side of the driver and structures located within 3 feet (1m) of design locations.

SCALE IN METERS 1 : 1500

0m 75m 150m  
ENGINEERED DESIGN By: H.Sabers • File #214399K-TrackOnly • 10-Jan-24

Pole location(s) ⊕ dimensions are relative to 0,0 reference point(s) ⊗



Not to be reproduced in whole or part without the written consent of Musco Sports Lighting, LLC. ©1981, 2023 Musco Sports Lighting, LLC.

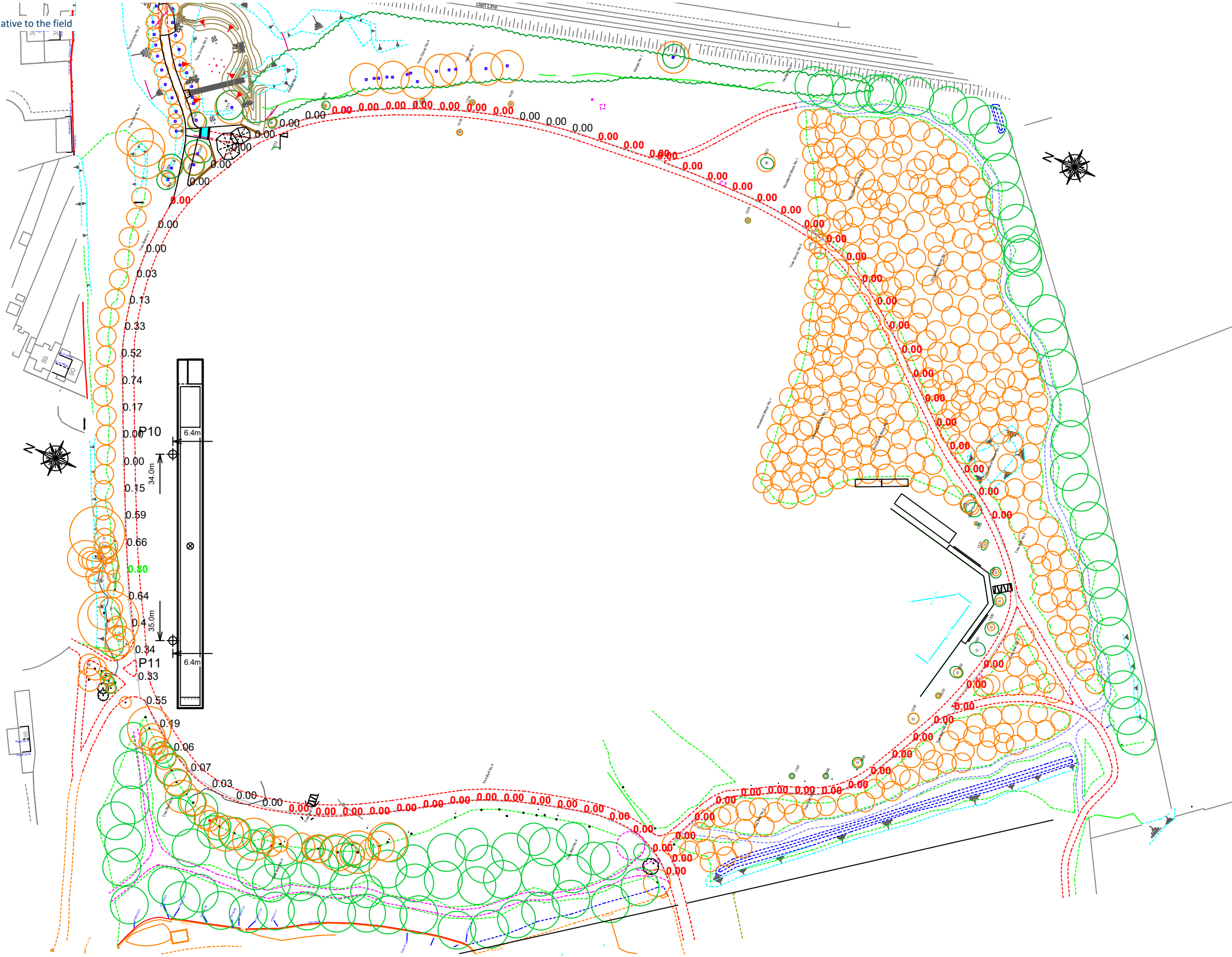
**ILLUMINATION SUMMARY**



**Equipment List For Areas Shown**

Pole				Luminaires				
QTY	LOCATION	SIZE	GRADE ELEVATION	ABOVE GRADE LEVEL	LUMINAIRE TYPE	QTY/POLE	THIS GRID	OTHER GRIDS
1	P10	15.24m	-	15.25m	TLC-LED-900	4	4	0
1	P11	15.24m	-	15.25m	TLC-LED-900	3	3	0
2				Totals		7	7	0

\*Above Grade level relative to the field



**Shanganagh Park Phase 1**  
Dublin, Leinster

**Grid Summary**

Name	Spill line 2m
Size	9.3m x 129.0m
Spacing	10.0m x 10.0m
Height	2.0m above grade

**Illumination Summary**

	Entire Grid	MAINTAINED HORIZONTAL LUX
Scan Average	0.07	
Maximum	1	
Minimum	0	
Min/Avg	0.00	
Min/Max	0.00	
UG (adjacent pts)	0.00	
CU	0.00	
No. of Points	102	
<b>LUMINAIRE INFORMATION</b>		
Applied Circuits	A,B,C,D	
No. of Luminaires	7	
Total Load	6.18 kW	

**Guaranteed Performance:** The ILLUMINATION described above is guaranteed per your Musco Warranty document and includes a 0.95 dirt depreciation factor.

**Field Measurements:** Individual field measurements may vary from computer-calculated predictions and should be taken in accordance with IESNA RP-6-15.

**Electrical System Requirements:** Refer to Amperage Draw Chart and/or the "Musco Control System Summary" for electrical sizing.

**Installation Requirements:** Results assume ± 3% nominal voltage at line side of the driver and structures located within 3 feet (1m) of design locations.

Pole location(s) ⊕ dimensions are relative to 0,0 reference point(s) ⊗



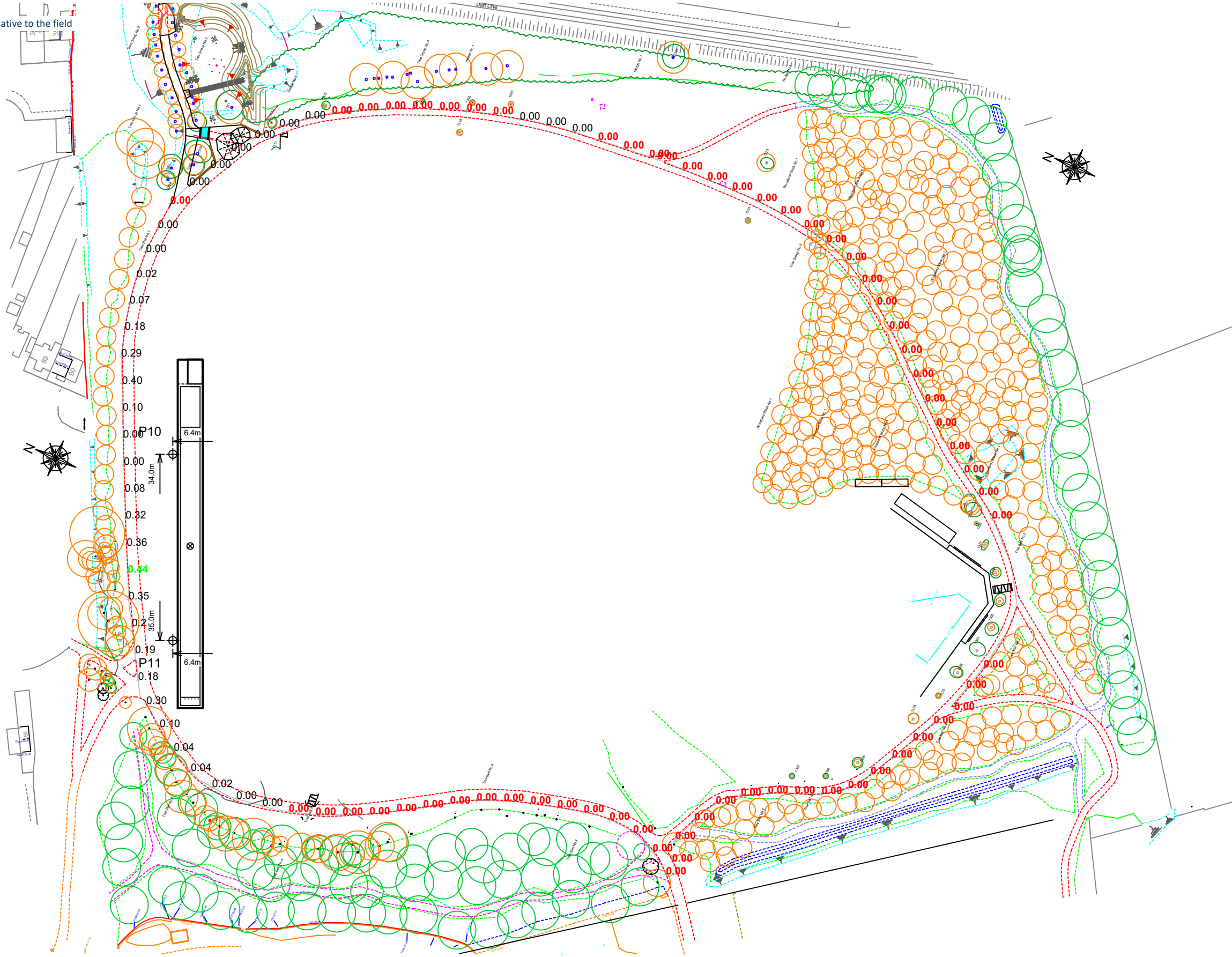
Not to be reproduced in whole or part without the written consent of Musco Sports Lighting, LLC. ©1981, 2023 Musco Sports Lighting, LLC.

**ILLUMINATION SUMMARY**

**Equipment List For Areas Shown**

Pole				Luminaires				
QTY	LOCATION	SIZE	GRADE ELEVATION	ABOVE GRADE LEVEL	LUMINAIRE TYPE	QTY/POLE	THIS GRID	OTHER GRIDS
1	P10	15.24m	-	15.25m	TLC-LED-900	4	4	0
1	P11	15.24m	-	15.25m	TLC-LED-900	3	3	0
2				Totals		7	7	0

\*Above Grade level relative to the field



**Shanganagh Park Phase 1**  
Dublin, Leinster

Grid Summary	
Name	Spill line 2m 50%
Size	9.3m x 129.0m
Spacing	10.0m x 10.0m
Height	2.0m above grade

Illumination Summary	
	MAINTAINED HORIZONTAL LUX
Entire Grid	
Scan Average	0.04
Maximum	0
Minimum	0
Min/Avg	0.00
Min/Max	0.00
UG (adjacent pts)	0.00
CU	0.00
No. of Points	102
<b>LUMINAIRE INFORMATION</b>	
Applied Circuits	A,B,C,D
No. of Luminaires	7
Total Load	6.18 kW

**Guaranteed Performance:** The ILLUMINATION described above is guaranteed per your Musco Warranty document and includes a 0.95 dirt depreciation factor.

**Field Measurements:** Individual field measurements may vary from computer-calculated predictions and should be taken in accordance with IESNA RP-6-15.

**Electrical System Requirements:** Refer to Amperage Draw Chart and/or the "Musco Control System Summary" for electrical sizing.

**Installation Requirements:** Results assume ± 3% nominal voltage at line side of the driver and structures located within 3 feet (1m) of design locations.

Pole location(s) ⊕ dimensions are relative to 0,0 reference point(s) ⊗



Not to be reproduced in whole or part without the written consent of Musco Sports Lighting, LLC. ©1981, 2023 Musco Sports Lighting, LLC.

**ILLUMINATION SUMMARY**



# Shanganagh Park Phase 1

Dublin, Leinster

## Equipment Layout

### INCLUDES:

· Track

**Electrical System Requirements:** Refer to Amperage Draw Chart and/or the "Musco Control System Summary" for electrical sizing.

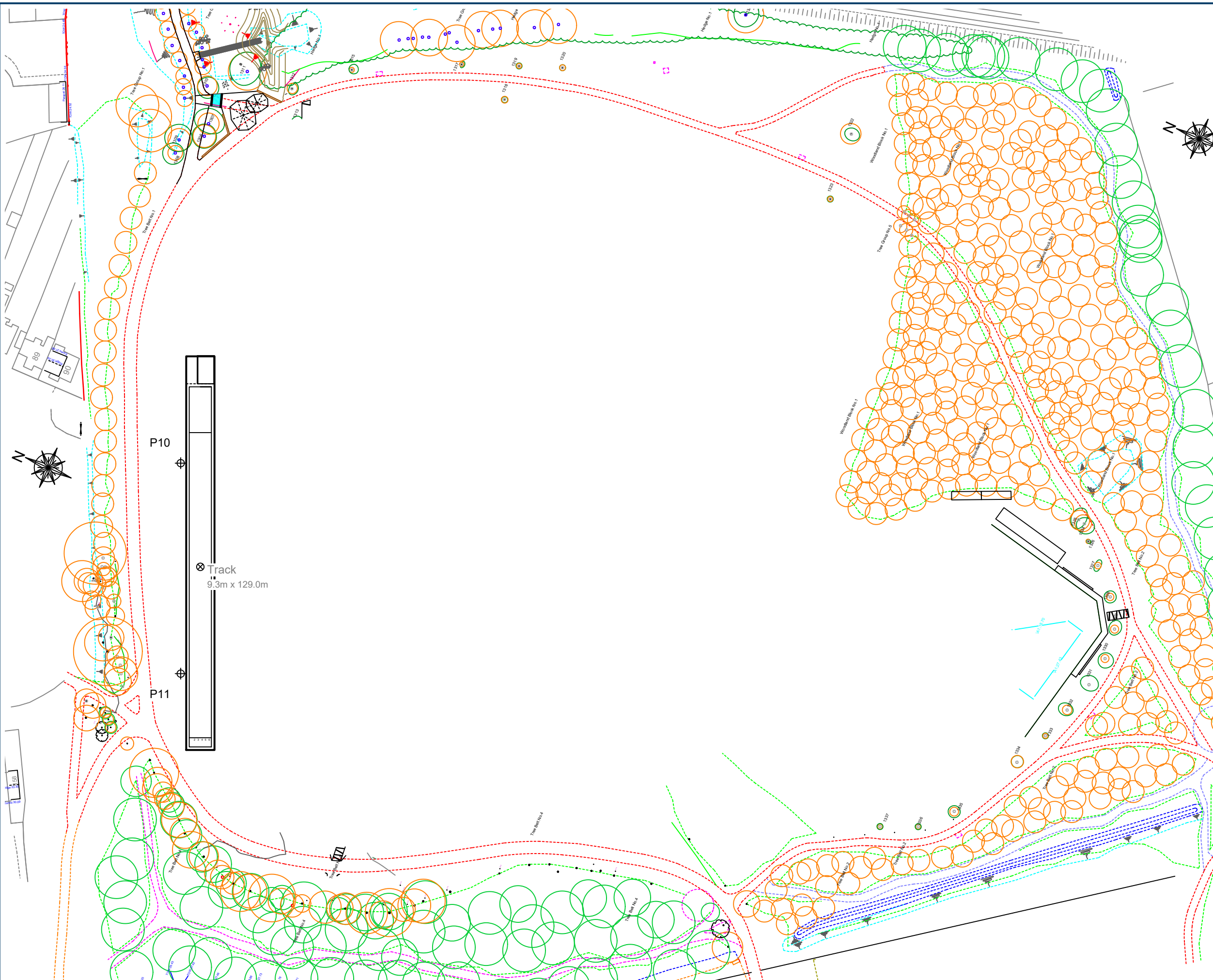
**Installation Requirements:** Results assume ± 3% nominal voltage at line side of the driver and structures located within 3 feet (1m) of design locations.

## Equipment List For Areas Shown

QTY	LOCATION	Pole		Luminaires		
		SIZE	GRADE ELEVATION	ABOVE GRADE LEVEL	LUMINAIRE TYPE	QTY/POLE
1	P10	15.24m	-	15.25m	TLC-LED-900	4
1	P11	15.24m	-	15.25m	TLC-LED-900	3
		Totals		7		

## Single Luminaire Amperage Draw Chart

Driver Specifications (.90 min power factor)	Line Amperage Per Luminaire (max draw)					
	220 (50)	230 (50)	240 (50)	380 (50)	400 (50)	415 (50)
Single Phase Voltage	4.9	4.7	4.5	2.9	2.7	2.6
TLC-LED-900	4.9	4.7	4.5	2.9	2.7	2.6



SCALE IN METERS 1 : 1200

0m 60m 120m  
 ENGINEERED DESIGN By: H.Sabers • File #214399K-TrackOnly • 10-Jan-24

Pole location(s) ⊕ dimensions are relative to 0,0 reference point(s) ⊗



We Make It Happen.

Not to be reproduced in whole or part without the written consent of Musco Sports Lighting, LLC. ©1981, 2023 Musco Sports Lighting, LLC.

EQUIPMENT LAYOUT