

Dunlaoghaire-Rathdown County Council
2 Marine Rd,
Dún Laoghaire,
Dublin,
A96 K6C9

17/01/2024

Addendum to AA Screening and EcIA for Shanganagh Park 1 (Part 8) proposed amendments.

To whom it may concern.,

Altemar are the appointed ecologists for the proposed development of park improvement works at Shanganagh Park 1 (Part 8).

Altemar prepared an Appropriate Assessment Screening for the previous development which included a wintering bird survey (dated 3rd April 2023). The AA Screening concluded *‘No European sites are within the zone of influence of the proposed development. In the absence of mitigation measures and having taken into consideration the proposed works, the potential pathways for impacts from the development site, the potential for in-combination effects, the distance between the proposed development site to designated conservation sites, the lack of a direct hydrological pathway or biodiversity corridor link to conservation sites and the dilution, mixing and settlement effect within the drainage network, watercourses and in the marine environment in addition to the Wintering Bird Assessment Report, it is concluded that the development would not give rise to any significant effects to designated sites. The construction and operation of the development will not impact on the conservation objectives of qualifying interests of European sites. An assessment in relation to potential in-combination effects was carried out. There is no direct pathway from the proposed development site to designated sites. All indirect pathways lead to the marine environment prior to reaching European sites. No significant cumulative impacts on European sites are likely to arise from the proposed development when considered together with other plans or projects. There will be no in combination effects from other projects in the vicinity of the proposed development.’*

In addition, Altemar prepared an Ecological Impact Assessment (EcIA) for the proposed development. The EcIA concluded *“The proposed development will change the local environment as new lights are to be erected and some of the existing vegetation will be removed. No bat roosts or potential bat roosts will be lost or impacted due to this development and the species expected to occur onsite will persist. In the absence of mitigation minor loss of foraging areas through the site will be seen when lighting is on. However, mitigation has been placed within the design and operation of the proposed lighting. During operation time restrictions will be in place during the bat foraging season. Landscaping is provided to enhance bat foraging on site and the placing of trees will be carried out in consultation with the project ecologist to create additional foraging corridors and assist in further limiting light spill.*

The residual impact is considered to be minor adverse/not significant in the short term and low beneficial positive in the long term. However, it should be noted that the planting of scattered trees and parkland habitat will improve the site for bat foraging and potential bat roosting.”

Permission is now being sought for minor amendments to the previously permitted design and include:

Taking account of the above, the following amendments are being proposed;

- Re-locate the pitch in an easterly direction including the ballstop netting and goalposts to preserve the Archaeological Material in Situ.
- Remove the floodlighting from the pitch.
- Amend the levels to create the pitch and install drainage.
- Change the viewing mound location slightly.
- Amend the bio-retention pond slightly but retain the same volume.

The new General Arrangement of the modification is seen in Figure 1, the drainage in Figure 2, Light spill in Figure 3 and arborist impact in Figure 4.

Appropriate Assessment

In relation to the Appropriate Assessment Screening of the project, I have reviewed the application documentation and additional projects in the vicinity of the proposed development for in-combination effects, in line with updated AA guidance and case law. I conclude that the proposed project does not cause any significant alteration to the findings of the previous AA Screening and conclude that this development alone or in combination with other projects that would not give rise to any significant effects to designated (Natura 2000) sites.

Ecological Impact Assessment

In relation to the EcIA and assessment of the amended project the following should be noted:

- 1) The removal of the lighting on the pitch would be seen as a minor positive aspect to the project. In the previous lighting scheme strict lighting timelines were in place for the benefit of bat species. These lighting restrictions will continue to be in place for the track area. It should be noted that the benefits for bats would be as a result of the removal of lighting on the pitch and would allow for foraging by bats over the pitch at all times.

The updated lighting with 2 lux (dark blue), 5 lux (green) 10 lux (light blue) isolines at 100% power at 2m high are seen in Figure 3. The project revision has restricted lighting to the track only, with no lighting on the pitch. There is very limited light spill, no greater than 2 lux, onto the existing lit footpath. However, lighting does extend onto the grassland beside the track but this would not be seen to be significant for bats. This lighting was in place in the previously approved project. In addition, the same seasonal lighting timing constraints will be in place as outlined in the bat assessment. Overall the modifications are seen as positive for bats.

- 2) The movement of the pitch has resulted in the retention of stands of trees that were to be removed previously. This would be seen as a positive step for the project and biodiversity. As seen from Figure 1 further tree planting is proposed.

Similarly, to the previous development the residual impact is considered to be minor adverse/not significant in the short term and low beneficial positive in the long term.

Kindest Regards



Bryan Deegan, Director, Altamar Limited.



LEGEND & SCHEDULE OF MATERIALS:

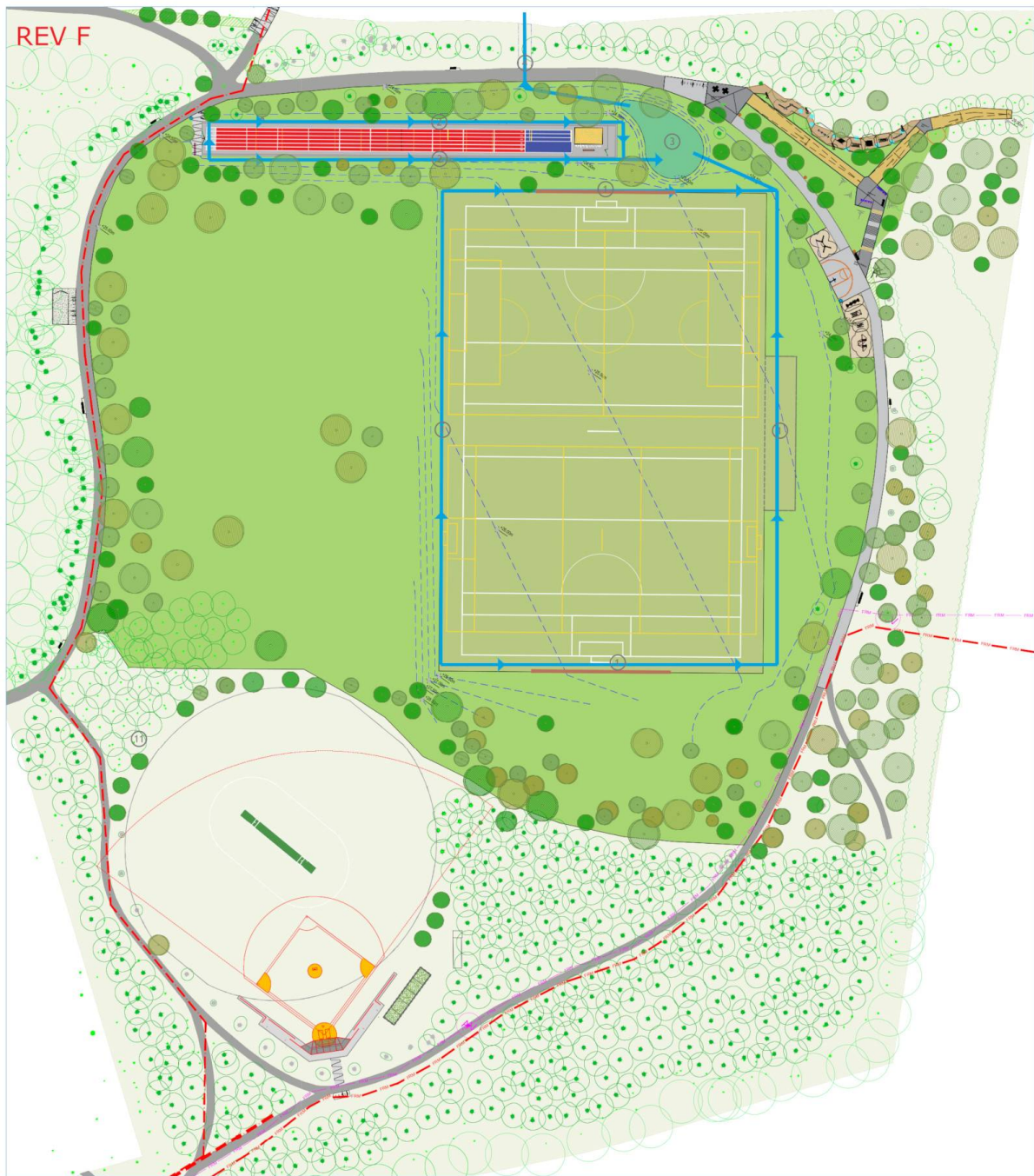
- EXISTING TREES RETAINED & PROTECTED
REFER TO TREE SURVEY FOR EXACT DETAILS
- PROPOSED TREE PLANTING:
NATIVE IRISH STOCK
- PROPOSED MEADOW AREAS:
ALL AREAS OUTSIDE OF PITCH AND WARM UP AREA
- PROPOSED PITCH:
PITCH AND WARM UP AREA TO BE TOPSOILED
- EXISTING GRASS:
NO WORKS PROPOSED
- Foul Sewer:
OUTSIDE OF THE SCOPE OF THIS PROCESS (by others)
- SELECTED PLAY EQUIPMENT:
AREA TO INCLUDED TIGER MULCH SAFETY SURFACE
- SELECTED CALISTHENICS EQUIPMENT:
AREA TO INCLUDED TIGER MULCH SAFETY SURFACE
- STREET LIGHT LOCATION:
RELOCATION OF 3x EXISTING STREET LIGHTS
- BASKETBALL:
15X11m 3v3 BASKETBALL COURT.

LEGEND:

1. 145x100m NATURAL GRASS PITCH
2. 100m ATHLETICS FACILITIES WITH FLOODLIGHTS
3. CRICKET CREASE
4. BASEBALL FIELD
5. RAMPED ACCESS BRIDGE CROSSING
6. NATURAL PLAY AREA
7. CALISTHENICS AREA
8. VIEWING AREA
9. MOUND: FOR VIEWING MATCHES AND CREATING VISUAL INTEREST WITHIN THE PARK
10. WARM UP AREA TO REDUCE PLAYING IMPACTS ON PITCHES
11. TEMPORARY STORAGE; LOCATION FOR GOALS AND TRAINING EQUIPMENT
12. WETLAND AREA: BIO RETENTION AREA FOR WATER TO SUPPORT HABITAT CREATION AND MANAGE STORMWATER SURGES
13. PATHS: WIDER FROM 2.5m TO 3.5m.
14. SERVICES: WATER, SURFACE WATER, ESB (INCL. SUB-STATION)
15. PARK ENTRANCE: UPGRADE ENTRANCE AND PROVIDE NEW THRESHOLD INTO THE PARK
16. REMOVED PATHS: PATH TO BE REMOVED TO CREATE MORE OPPORTUNITIES FOR TREE PLANTING (HIGHLIGHTED IN GREEN)

<p>dlr Comhairle Contae County Council</p> <p><small>© Ordnance Survey Ireland. All rights reserved. License Number 2015/20062004W Dun Laoghaire-Rathdown County Council</small></p>	<p>Parks & Landscape Services</p> <p><small>We will create from this drawing the physical dimensions only. Check all dimensions on site before commencing work. Request any alterations to this R2 before proceeding. All works to be carried out after the 21st. These drawings and designs are copyright of Dun Laoghaire Rathdown County Council.</small></p> <p><small>© Dun Laoghaire Rathdown County Council</small></p>		<p>Drawing Title: SHANGANAGH PARK MASTERPLAN - PHASE 1 General Arrangement</p>		Drawing Number:	Revision:	Scale:	Date:	Drawn:	Checked:
			<p>Senior Parks Superintendent : Ruairi O'Duain County Hall, Dun Laoghaire, Co. Dublin.</p>		DRP 2422-02	G	1/600 @A1	Jan 2024	SB	EOB

Figure 1. General Arrangement.



LEGEND:

1. PITCH PRIMARY DRAINAGE SYSTEM CONSISTING OF 225MM PERFORATED PIPES (APPROX AREA 7200 SQ. M)
2. TRACK PRIMARY DRAINAGE SYSTEM CONSISTING OF 150MM PERFORATED PIPE (APPROX AREA 1300 SQ. M)
3. BIO-RETENTION AREA (VOLUME APPROX.500 CU. M)
4. OUTFALL FROM ATTENUATION AREA WITH HYDRO-BREAK

NOTE:

Silt drains and perforated lateral drains will be installed across the pitches and directed to a bio-retention area via collector drains (primary drainage system) that will be installed around the perimeter of the pitch. Further minor drainage will take place at the cricket/baseball field as required, the sprint track and at the bottom of any steep slopes. The attenuation system will be an above ground bio-retention pond is to be located along the northern boundary of the pitches and will be designed so that attenuation will be provided for the 1.0% AEP (1:100 year) storm event. The attenuation system outflow will be controlled by a hydrobrake connected to the existing surface water drainage system with the outflow restricted to 2l/s/ha or Qbar, whichever is the greater, in accordance with the Greater Dublin Strategic Drainage Strategy

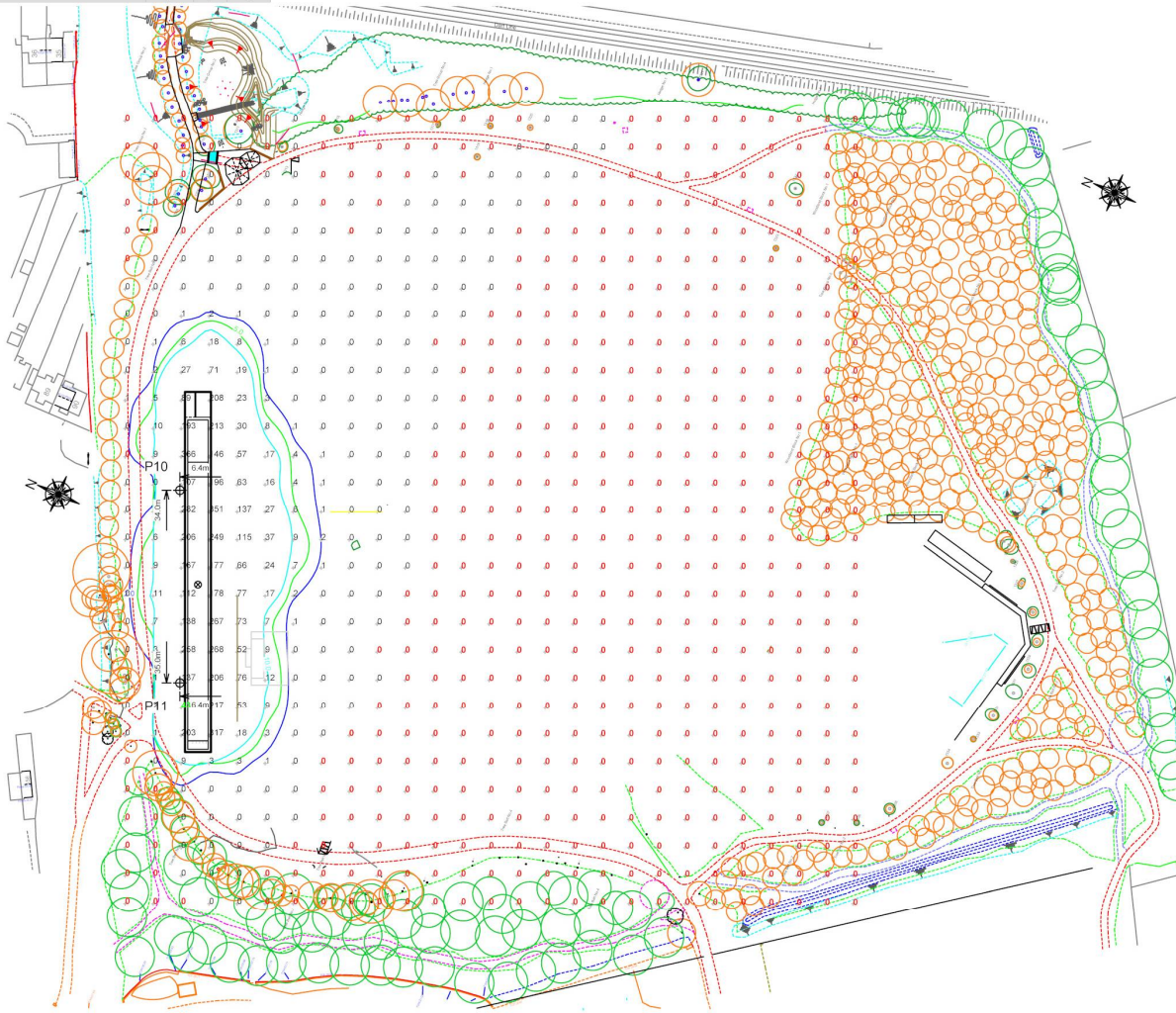
(GDSDS). The exact size of attenuation system will be determined by a drainage engineer following further geotechnical site investigation and will be subject to the agreement of the Water & Drainage Section.

 <p>Parks & Landscape Services Do not scale from this drawing. Use figured dimensions only. Check all dimensions on site before commencing works. Report any discrepancies to the SR before proceeding. All works to be carried out in line with the SR. These drawings and design themes are copyright of Dun Laoghaire Rathdown County Council.</p>		<p>Drawing Title: SHANGANAGH PARK MASTERPLAN - PHASE 1 Drainage Layout</p>		Drawing Number:	Revision:	Scale:	Date:	Drawn:	Checked:
		<p>Senior Parks Superintendent : Ruairi O'Duilaing County Hall, Dun Laoghaire, Co. Dublin.</p>		DRP 2422-06	F	1/600 @A1	Jan 2024	SB	EOB

Figure 2. Drainage Layout

Equipment List For Areas Shown				Luminaires				
Pole								
QTY	LOCATION	SIZE	GRADE ELEVATION	ABOVE GRADE LEVEL	LUMINAIRE TYPE	QTY/POLE	THIS GRID	OTHER GRIDS
1	P10	15.24m	-	15.25m	TLC-LED-900	4	4	0
1	P11	15.24m	-	15.25m	TLC-LED-900	3	3	0
Totals						7	7	0

*Above Grade level relative to the field



SCALE IN METERS 1 : 1500
 0m 75m 150m
 ENGINEERED DESIGN By: H.Sabers • File #214399K-TrackOnly • 10-Jan-24

Pole location(s) dimensions are relative to 0,0 reference point(s)

Shanganagh Park Phase 1 Dublin, Leinster

Grid Summary	
Name	Spill Blanket 2m
Size	9.3m x 129.0m
Spacing	10.0m x 10.0m
Height	2.0m above grade

Illumination Summary	
Entire Grid	MAINTAINED HORIZONTAL LUX
Scan Average	8.94
Maximum	436
Minimum	0
Min/Avg	0.00
Min/Max	0.00
UG (adjacent pts)	9492.01
CU	0.98
No. of Points	783
LUMINAIRE INFORMATION	
Applied Circuits	A, B, C, D
No. of Luminaires	7
Total Load	6.18 kW

Guaranteed Performance: The ILLUMINATION described above is guaranteed per your Musco Warranty document and includes a 0.95 dirt depreciation factor.
Field Measurements: Individual field measurements may vary from computer-calculated predictions and should be taken in accordance with IESNA RP-6-15.
Electrical System Requirements: Refer to Amperage Draw Chart and/or the "Musco Control System Summary" for electrical sizing.
Installation Requirements: Results assume ± 3% nominal voltage at line side of the driver and structures located within 3 feet (1m) of design locations.



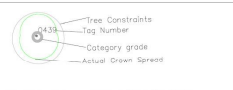
Not to be reproduced in whole or part without the written consent of Musco Sports Lighting, LLC. ©1981, 2023 Musco Sports Lighting, LLC.

ILLUMINATION SUMMARY

Figure 3. Light spill assessment



Notes:



BSS&B: 2012 – Category Retention Rating

- Category U Trees** – Trees in such a condition that any existing value would be lost within 10 years or being recommended for removal based on structural practice.
 - Category A Trees** – Trees of high quality/value with a min. of 40 years life expectancy.
 - Category B Trees** – Trees of moderate quality/value with a min. of 20 years life expectancy.
 - Category C Trees** – Trees of low quality/value with a min. of 10 years life expectancy.
- Sub Categories**
- 1 – Mature Architectural values
 - 2 – Mature / Innovative and
 - 3 – Mature cultural and conservation values.



Tree Protection Detail

Work Exclusion Zone
 The protective fencing is to be erected around the root protection areas around the trees to be retained and checked on this. It should be erected to the outer edge of the tree canopy and the protective fencing is to be erected to the outer edge of the tree canopy and the protective fencing is to be erected to the outer edge of the tree canopy.

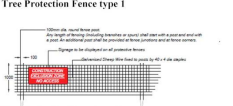
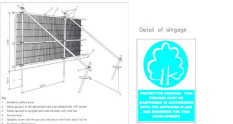
Tree
 Protective fence line to protect work exclusion zone around trees being retained.

Where the protective fencing is erected around trees to be retained, it should be erected to the outer edge of the tree canopy and the protective fencing is to be erected to the outer edge of the tree canopy.

Signs are to be attached to these fences warning personnel that this is a protective area and that the fencing must be maintained in good condition in accordance with the approved plans and drawings for this development.

Once the protective fence line is erected, then the main construction works can commence on site.

Protective fence detail as per BSS&B: 2012



- During the construction works the following is required:
- The main contractor or site manager is to be responsible for the installation and maintenance of the protective fencing.
 - Storage of materials, work tools and staff or parking to be identified on the site plan and to be maintained throughout the construction period.
 - The main contractor or site manager is to ensure the protective fencing is erected around trees to be retained and checked on this.
 - The main contractor or site manager is to ensure the protective fencing is erected around trees to be retained and checked on this.
 - Any work to occur within the protection areas are to be carried out in accordance with the approved plans and drawings for this development.
 - The main contractor or site manager is to ensure the protective fencing is erected around trees to be retained and checked on this.
 - The main contractor or site manager is to ensure the protective fencing is erected around trees to be retained and checked on this.
 - The main contractor or site manager is to ensure the protective fencing is erected around trees to be retained and checked on this.

ARBORIST ASSOCIATES LTD.
 54 BALLYVAUGHN COTTAGES, ENNERBREY, CO. WICKLOW
 TEL: 01-2742111 / 087-2905889

TITLE: Tree Protection Plan
 Site: Shanganagh Park Sports Facilities, Shanganagh, Dublin 16
 DATE: Dwg No: SSPR02 Scale 1:500 @ A0

Figure4. Arborist Impact Assessment.

