

# Shanganagh Park Phase 1

Dublin, Leinster

## Lighting System

Pole / Fixture Summary						
Pole ID	Pole Height	Mtg Height	Fixture Qty	Luminaire Type	Load	Circuit
P4	24.4	24.4	8	TLC-LED-1500	11.28 kW	B
P5	24.4	24.4	5	TLC-LED-1500	7.05 kW	A
		24.4	5	TLC-LED-1500	7.05 kW	B
		15.2	1	TLC-LED-600	0.58 kW	A
		15.2	1	TLC-LED-600	0.58 kW	B
P6	24.4	24.4	8	TLC-LED-1500	11.28 kW	A
P7	24.4	24.4	4	TLC-LED-1500	5.64 kW	A
		24.4	4	TLC-LED-900	3.52 kW	A
		24.4	3	TLC-LED-1500	4.23 kW	B
P8	24.4	24.4	3	TLC-LED-1500	4.23 kW	A
		24.4	1	TLC-LED-900	0.88 kW	A
		24.4	1	TLC-LED-900	0.88 kW	B
		24.4	1	TLC-LED-900	0.88 kW	B
		24.4	1	TLC-LED-900	0.88 kW	A
		15.2	1	TLC-LED-600	0.58 kW	B
		15.2	1	TLC-LED-600	0.58 kW	A
		24.4	4	TLC-LED-1500	5.64 kW	B
P9	24.4	24.4	4	TLC-LED-900	3.52 kW	B
P10	15.2	15.2	4	TLC-LED-900	3.53 kW	C
P11	15.2	15.2	3	TLC-LED-900	2.65 kW	C
<b>8</b>			<b>63</b>		<b>75.46 kW</b>	

Circuit Summary			
Circuit	Description	Load	Fixture Qty
A	Football 1 - Pitch 1	34.64 kW	28
B	Football 2 / Pitch 1	34.64 kW	28
C	Track	6.18 kW	7

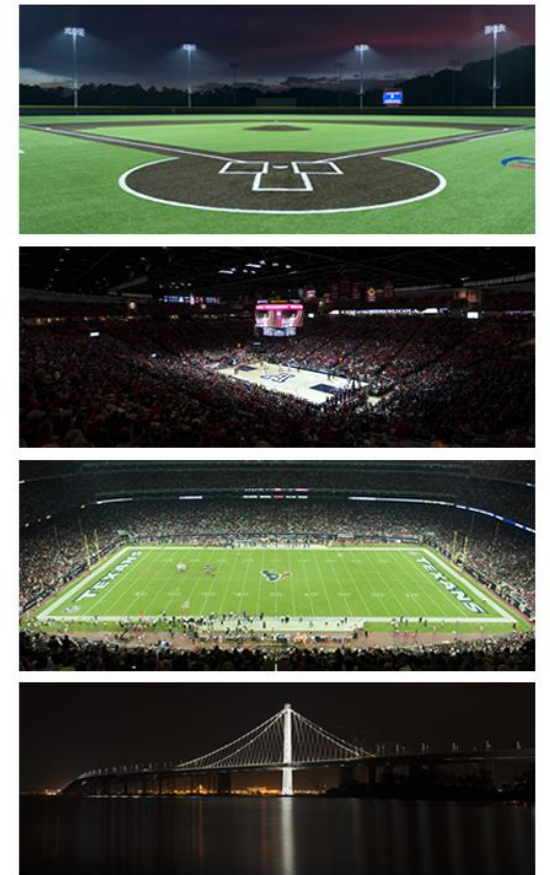
Fixture Type Summary							
Type	Source	Wattage	Lumens	L90	L80	L70	Quantity
TLC-LED-1500	LED 5700K - 75 CRI	1410W	181,000	>120,000	>120,000	>120,000	26
TLC-LED-1500	LED 4000K - 70 CRI	1410W	181,000	>120,000	>120,000	>120,000	14
TLC-LED-900	LED 4000K - 70 CRI	890W	89,600	>120,000	>120,000	>120,000	2
TLC-LED-900	LED 4000K - 70 CRI	880W	104,000	>120,000	>120,000	>120,000	15
TLC-LED-600	LED 5700K - 75 CRI	580W	65,600	>120,000	>120,000	>120,000	4
TLC-LED-900	LED 5700K - 75 CRI	880W	104,000	>120,000	>120,000	>120,000	2

Single Luminaire Amperage Draw Chart						
Driver (.90 min power factor)	Line Amperage Per Luminaire					
Single Phase Voltage	220 (50)	230 (50)	240 (50)	380 (50)	400 (50)	415 (50)
TLC-LED-1500	7.9	7.6	7.3	4.6	4.4	4.2
TLC-LED-900	5.0	4.8	4.6	2.9	2.8	2.7
TLC-LED-600	3.2	3.1	3.0	1.9	1.8	1.7

## Light Level Summary

Calculation Grid Summary								
Grid Name	Calculation Metric	Illumination					Circuits	Fixture Qty
		Ave	Min	Max	Min/Max	Min/Ave		
GAA Pitch 1	Horizontal Illuminance	507	368	708	0.52	0.73	A,B	56
Soccer 1	Horizontal Illuminance	291	219	414	0.53	0.75	A	28
Soccer 2	Horizontal Illuminance	289	216	409	0.53	0.75	B	28
Spill Blanket 1m 50%	Horizontal	69.3	0	394	0.00	0.00	A,B,C,D	63
Spill Blanket 1m	Horizontal	127	0	719	0.00	0.00	A,B,C,D	63
Spill Blanket 2m 50%	Horizontal	69.2	0	403	0.00	0.00	A,B,C,D	63
Spill Blanket 2m	Horizontal	126	0	735	0.00	0.00	A,B,C,D	63
Spill line 1m 50%	Horizontal	0.33	0	1.70	0.00	0.00	A,B,C,D	63
Spill line 1m	Horizontal	0.57	0	2.96	0.00	0.00	A,B,C,D	63
Spill line 2m 50%	Horizontal	0.25	0	1.38	0.00	0.00	A,B,C,D	63
Spill line 2m	Horizontal	0.46	0	2.51	0.00	0.00	A,B,C,D	63
Track	Horizontal Illuminance	272	157	545	0.29	0.58	C	7

## From Hometown to Professional



**We Make It Happen.**

Not to be reproduced in whole or part without the written consent of Musco Sports Lighting, LLC. ©1981, 2023 Musco Sports Lighting, LLC.

**EQUIPMENT LIST FOR AREAS SHOWN**

Pole			Luminaires					
QTY	LOCATION	SIZE	GRADE ELEVATION	MOUNTING HEIGHT	LUMINAIRE TYPE	QTY / POLE	THIS GRID	OTHER GRIDS
2	P4, P6	24.38m	-	24.38m	TLC-LED-1500	8	8	0
1	P5	24.38m	-	15.24m	TLC-LED-600	2	2	0
				24.38m	TLC-LED-1500	10	10	0
2	P7, P9	24.38m	-	24.38m	TLC-LED-900	4	4	0
				24.38m	TLC-LED-1500	4	4	0
1	P8	24.38m	-	24.38m	TLC-LED-900	4	4	0
				15.24m	TLC-LED-600	2	2	0
				24.38m	TLC-LED-1500	6	6	0
6	TOTALS					56	56	0

**Shanganagh Park Phase 1**  
Dublin, Leinster

GRID SUMMARY	
Name:	GAA Pitch 1
Size:	145.0m x 90.0m
Spacing:	10.0m x 9.5m
Height:	1.0m above grade

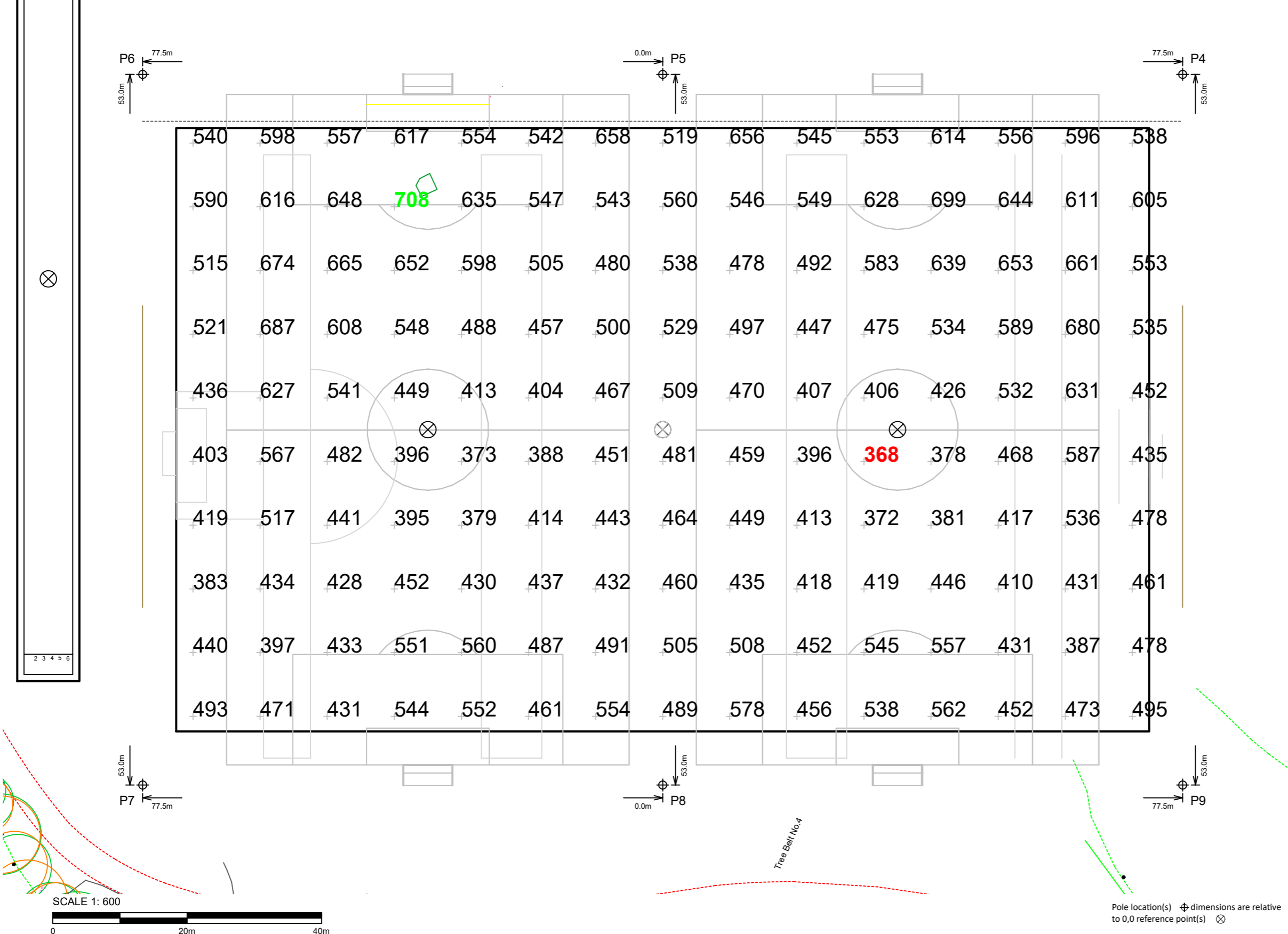
ILLUMINATION SUMMARY	
MAINTAINED HORIZONTAL LUX	
Entire Grid	
Guaranteed Average:	500
Scan Average:	507.47
Maximum:	708
Minimum:	368
Guaranteed Min / Avg:	0.7
Min / Avg:	0.73
Min / Max:	0.52
UG (adjacent pts):	1.44
CU:	0.81
No. of Points:	150
LUMINAIRE INFORMATION	
Applied Circuits:	A, B
No. of Luminaires:	56
Total Load:	69.28 kW

**Guaranteed Performance:** The ILLUMINATION described above is guaranteed per your Musco Warranty document and includes a 0.95 dirt depreciation factor.

**Field Measurements:** Individual field measurements may vary from computer-calculated predictions and should be taken in accordance with IESNA RP-6-15.

**Electrical System Requirements:** Refer to Amperage Draw Chart and/or the "Musco Control System Summary" for electrical sizing.

**Installation Requirements:** Results assume ± 3% nominal voltage at line side of the driver and structures located within 3 feet (1m) of design locations.



Not to be reproduced in whole or part without the written consent of Musco Sports Lighting, LLC. ©1981, 2023 Musco Sports Lighting, LLC.

**ILLUMINATION SUMMARY**

**EQUIPMENT LIST FOR AREAS SHOWN**

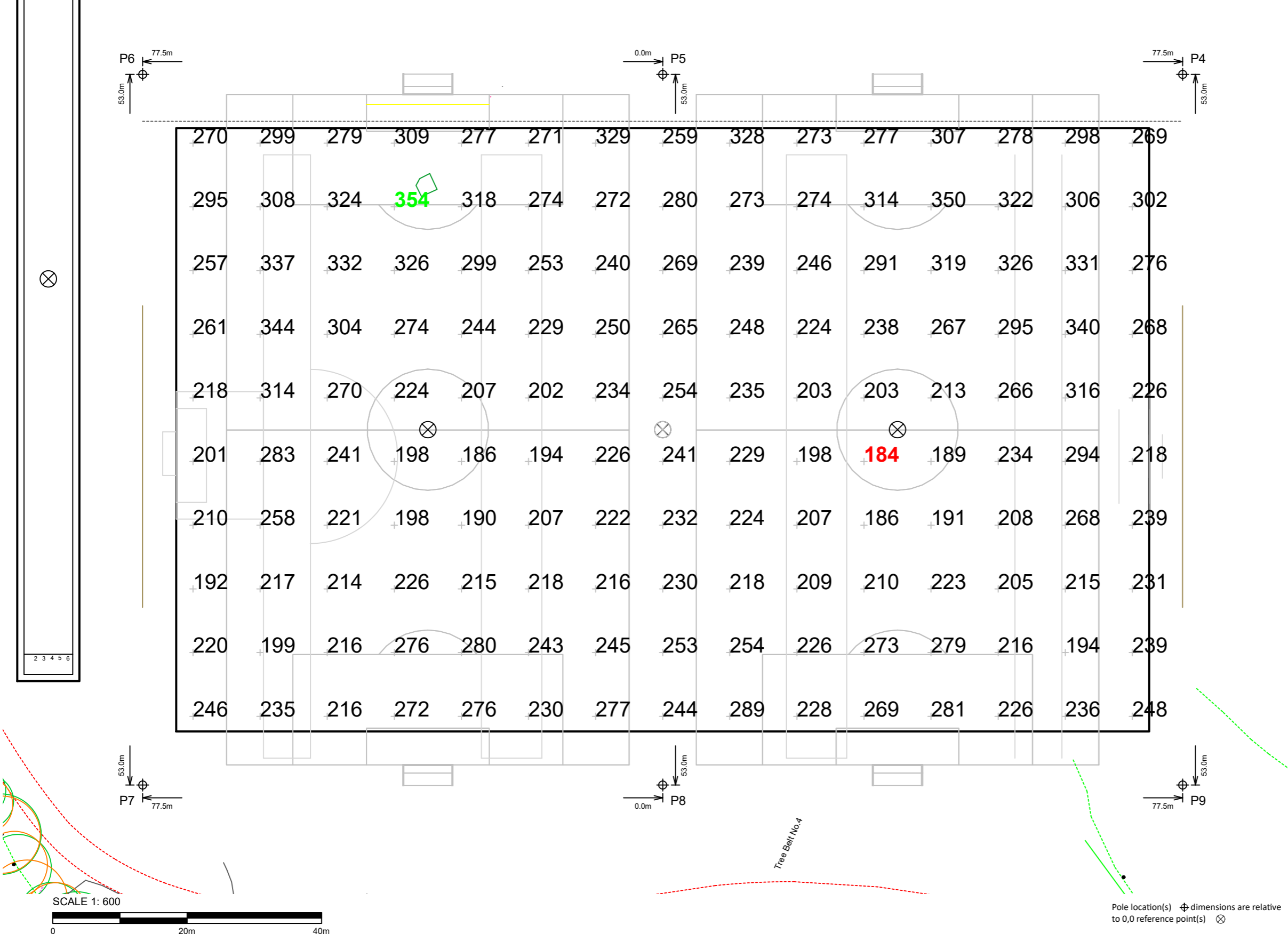
QTY	Pole			Luminaires				
	LOCATION	SIZE	GRADE ELEVATION	MOUNTING HEIGHT	LUMINAIRE TYPE	QTY / POLE	THIS GRID	OTHER GRIDS
2	P4, P6	24.38m	-	24.38m	TLC-LED-1500	8	8	0
1	P5	24.38m	-	15.24m	TLC-LED-600	2	2	0
				24.38m	TLC-LED-1500	10	10	0
2	P7, P9	24.38m	-	24.38m	TLC-LED-900	4	4	0
				24.38m	TLC-LED-1500	4	4	0
1	P8	24.38m	-	24.38m	TLC-LED-900	4	4	0
				15.24m	TLC-LED-600	2	2	0
				24.38m	TLC-LED-1500	6	6	0
6	TOTALS					56	56	0

**Shanganagh Park Phase 1**  
Dublin, Leinster

GRID SUMMARY	
Name:	GAA Pitch 1
Size:	145.0m x 90.0m
Spacing:	10.0m x 9.5m
Height:	1.0m above grade

ILLUMINATION SUMMARY (50% Dimming)	
MAINTAINED HORIZONTAL LUX	
	Entire Grid
Scan Average:	254
Maximum:	354
Minimum:	184
Min / Avg:	0.73
Min / Max:	0.52
UG (adjacent pts):	1.44
CU:	0.81
No. of Points:	150
LUMINAIRE INFORMATION	
Applied Circuits:	A, B
No. of Luminaires:	56
Total Load:	34.64 kW (50% dimming)

**Dimming Summary:** Values shown are estimated. Reducing wattage based on dimming can increase L90, L80, and L70 hours. See ILLUMINATION SUMMARY for complete analysis.



Not to be reproduced in whole or part without the written consent of Musco Sports Lighting, LLC. ©1981, 2023 Musco Sports Lighting, LLC.

EQUIPMENT LIST FOR AREAS SHOWN								
Pole			Luminaires					
QTY	LOCATION	SIZE	GRADE ELEVATION	MOUNTING HEIGHT	LUMINAIRE TYPE	QTY / POLE	THIS GRID	OTHER GRIDS
1	P5	24.38m	-	15.24m	TLC-LED-600	2	1	1
				24.38m	TLC-LED-1500	10	5	5
1	P6	24.38m	-	24.38m	TLC-LED-1500	8	8	0
1	P7	24.38m	-	24.38m	TLC-LED-900	4	4	0
				24.38m	TLC-LED-1500	4	4	0
1	P8	24.38m	-	24.38m	TLC-LED-900	4	2	2
				15.24m	TLC-LED-600	2	1	1
				24.38m	TLC-LED-1500	6	3	3
4	TOTALS					40	28	12

## Shanganagh Park Phase 1

Dublin, Leinster

GRID SUMMARY	
Name:	Soccer 1
Size:	100.0m x 60.0m
Spacing:	9.5m x 9.2m
Height:	1.0m above grade

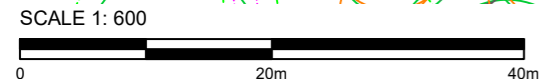
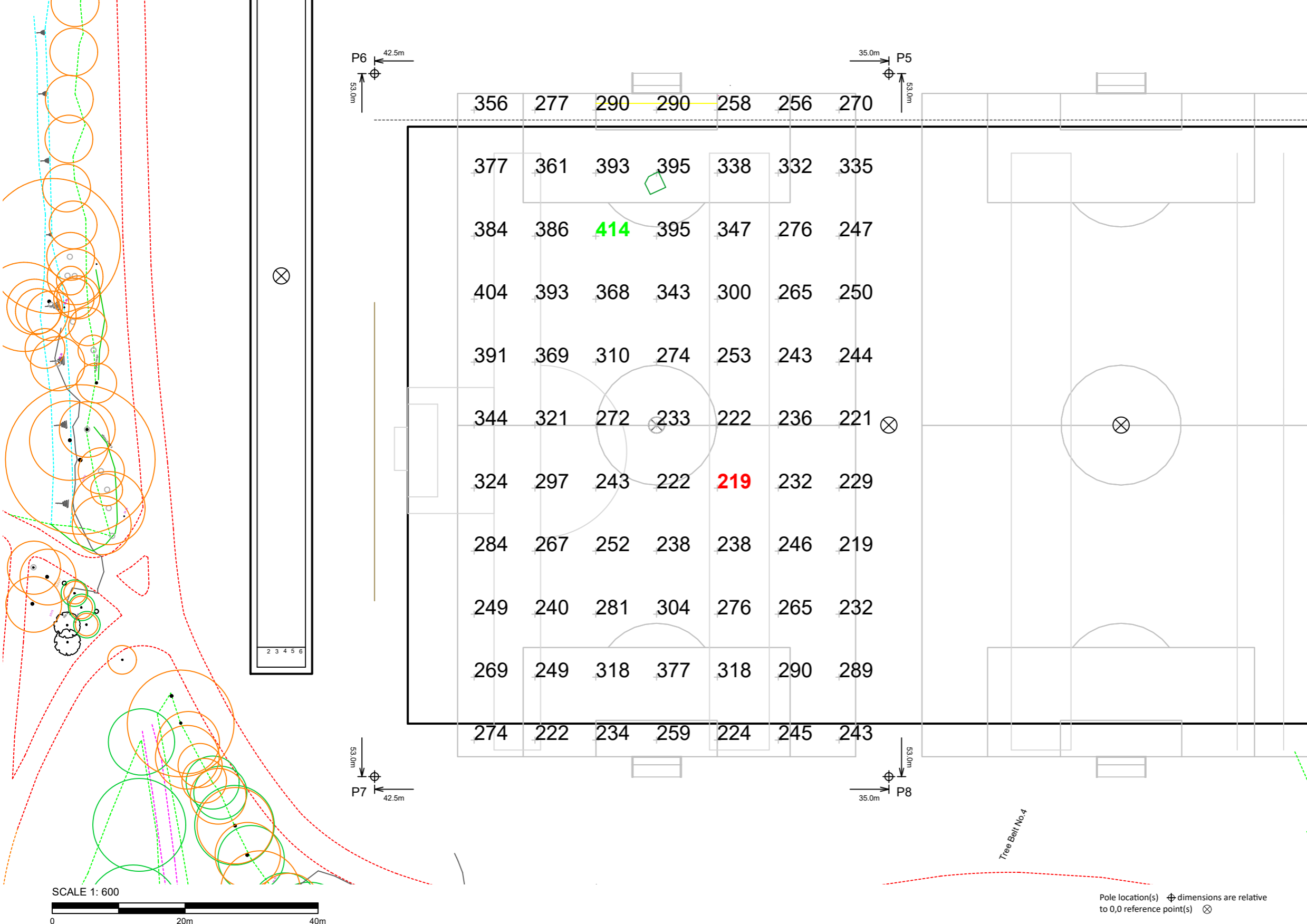
ILLUMINATION SUMMARY	
MAINTAINED HORIZONTAL LUX	
	Entire Grid
Scan Average:	290.96
Maximum:	414
Minimum:	219
Min / Avg:	0.75
Min / Max:	0.53
UG (adjacent pts):	1.46
CU:	0.44
No. of Points:	77
LUMINAIRE INFORMATION	
Applied Circuits:	A
No. of Luminaires:	28
Total Load:	34.64 kW

**Guaranteed Performance:** The ILLUMINATION described above is guaranteed per your Musco Warranty document and includes a 0.95 dirt depreciation factor.

**Field Measurements:** Individual field measurements may vary from computer-calculated predictions and should be taken in accordance with IESNA RP-6-15.

**Electrical System Requirements:** Refer to Amperage Draw Chart and/or the "Musco Control System Summary" for electrical sizing.

**Installation Requirements:** Results assume ± 3% nominal voltage at line side of the driver and structures located within 3 feet (1m) of design locations.



Pole location(s) ⊕ dimensions are relative to 0,0 reference point(s) ⊗



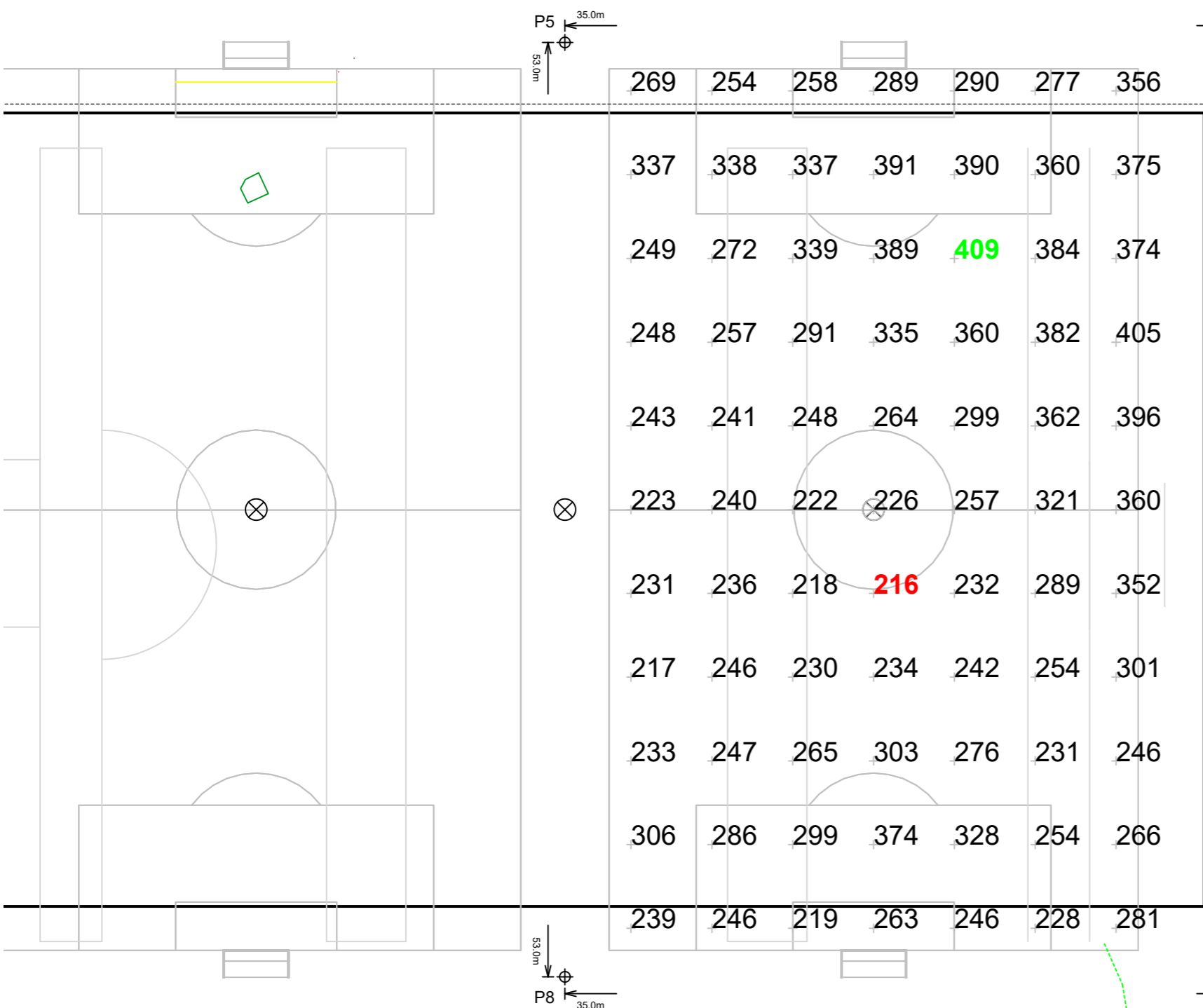
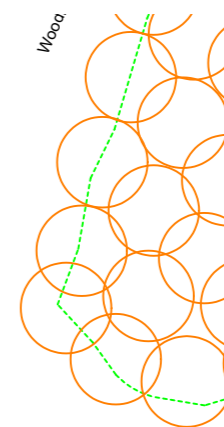
EQUIPMENT LIST FOR AREAS SHOWN								
Pole				Luminaires				
QTY	LOCATION	SIZE	GRADE ELEVATION	MOUNTING HEIGHT	LUMINAIRE TYPE	QTY / POLE	THIS GRID	OTHER GRIDS
1	P4	24.38m	-	24.38m	TLC-LED-1500	8	8	0
1	P5	24.38m	-	15.24m	TLC-LED-600	2	1	1
				24.38m	TLC-LED-1500	10	5	5
1	P8	24.38m	-	24.38m	TLC-LED-900	4	2	2
				15.24m	TLC-LED-600	2	1	1
				24.38m	TLC-LED-1500	6	3	3
1	P9	24.38m	-	24.38m	TLC-LED-900	4	4	0
				24.38m	TLC-LED-1500	4	4	0
4	TOTALS					40	28	12

## Shanganagh Park Phase 1

Dublin, Leinster

GRID SUMMARY	
Name:	Soccer 2
Size:	100.0m x 60.0m
Spacing:	9.5m x 9.2m
Height:	1.0m above grade

ILLUMINATION SUMMARY	
MAINTAINED HORIZONTAL LUX	
	Entire Grid
Scan Average:	288.96
Maximum:	409
Minimum:	216
Min / Avg:	0.75
Min / Max:	0.53
UG (adjacent pts):	1.42
CU:	0.44
No. of Points:	77
LUMINAIRE INFORMATION	
Applied Circuits:	B
No. of Luminaires:	28
Total Load:	34.64 kW

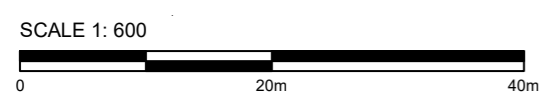


**Guaranteed Performance:** The ILLUMINATION described above is guaranteed per your Musco Warranty document and includes a 0.95 dirt depreciation factor.

**Field Measurements:** Individual field measurements may vary from computer-calculated predictions and should be taken in accordance with IESNA RP-6-15.

**Electrical System Requirements:** Refer to Amperage Draw Chart and/or the "Musco Control System Summary" for electrical sizing.

**Installation Requirements:** Results assume ± 3% nominal voltage at line side of the driver and structures located within 3 feet (1m) of design locations.



Pole location(s) ⊕ dimensions are relative to 0,0 reference point(s) ⊗



**We Make It Happen.**

Not to be reproduced in whole or part without the written consent of Musco Sports Lighting, LLC. ©1981, 2023 Musco Sports Lighting, LLC.

### ILLUMINATION SUMMARY



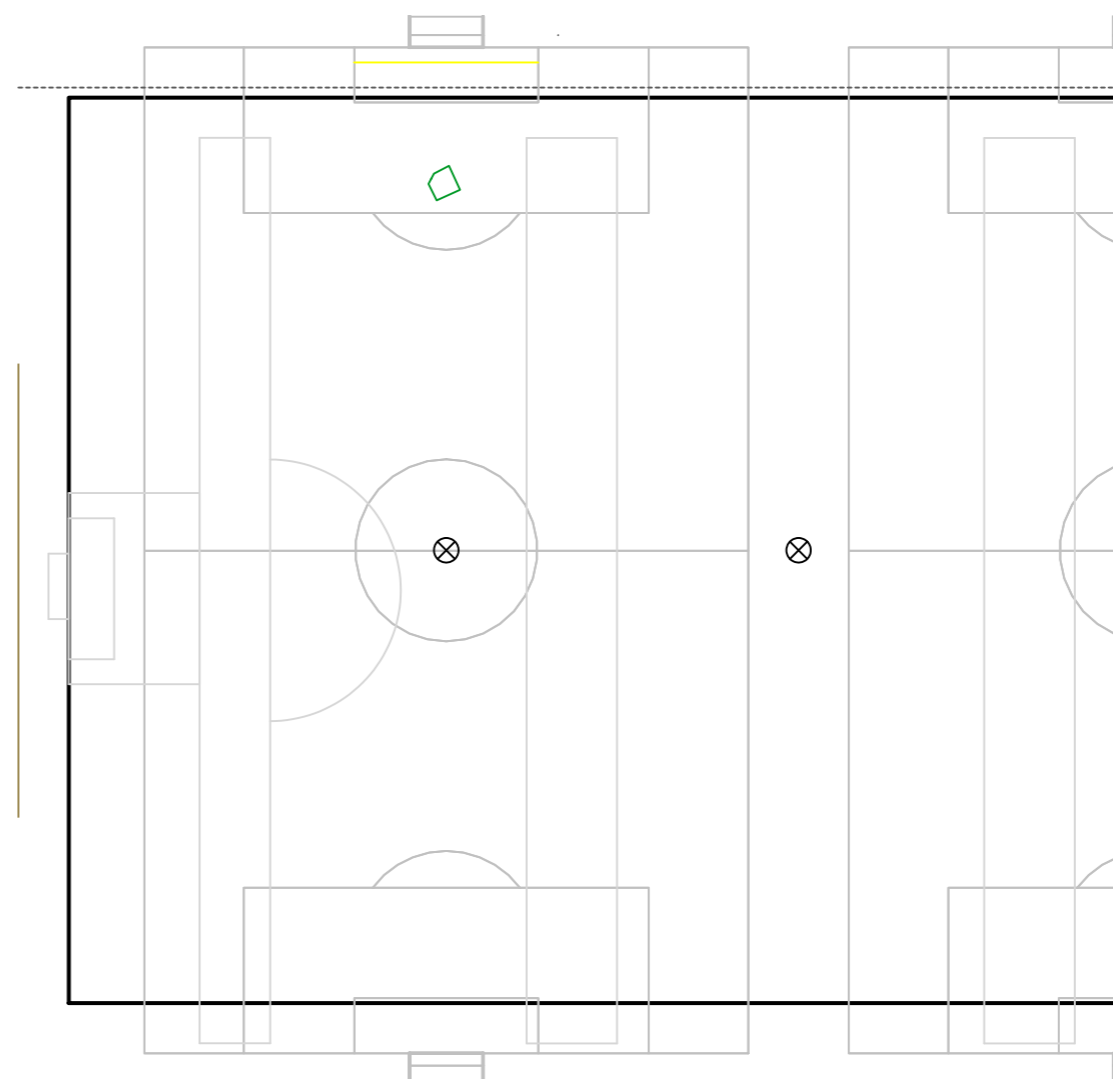
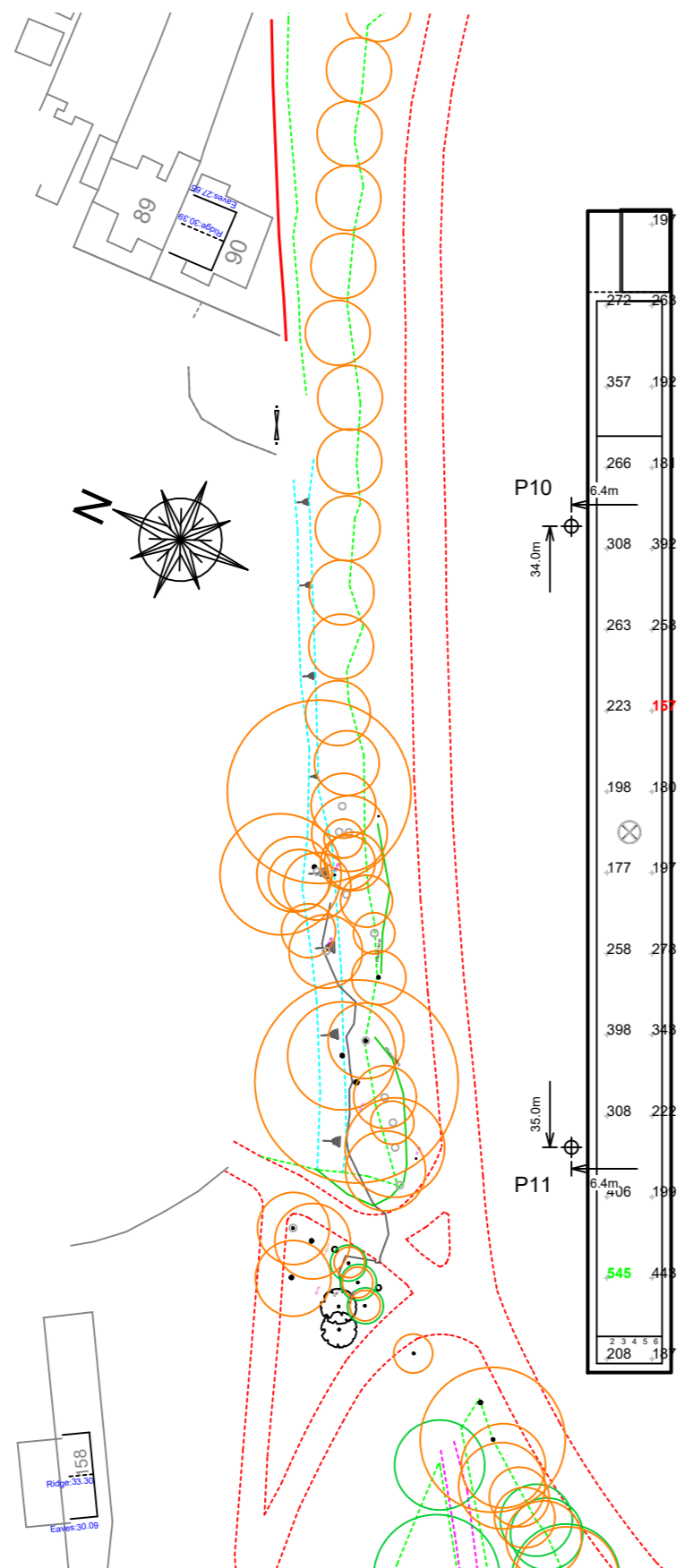
**EQUIPMENT LIST FOR AREAS SHOWN**

Pole			Luminaires					
QTY	LOCATION	SIZE	GRADE ELEVATION	MOUNTING HEIGHT	LUMINAIRE TYPE	QTY / POLE	THIS GRID	OTHER GRIDS
1	P10	15.24m	-	15.24m	TLC-LED-900	4	4	0
1	P11	15.24m	-	15.24m	TLC-LED-900	3	3	0
2	TOTALS					7	7	0

**Shanganagh Park Phase 1**  
Dublin, Leinster

GRID SUMMARY	
Name:	Track
Size:	9.3m x 129.0m
Spacing:	5.0m x 9.0m
Height:	1.0m above grade

ILLUMINATION SUMMARY	
MAINTAINED HORIZONTAL LUX	
Entire Grid	
Guaranteed Average:	200
Scan Average:	271.63
Maximum:	545
Minimum:	157
Guaranteed Min / Avg:	0.6
Min / Avg:	0.58
Min / Max:	0.29
UG (adjacent pts):	2.62
CU:	0.52
No. of Points:	29
LUMINAIRE INFORMATION	
Applied Circuits:	C
No. of Luminaires:	7
Total Load:	6.18 kW



**Guaranteed Performance:** The ILLUMINATION described above is guaranteed per your Musco Warranty document and includes a 0.95 dirt depreciation factor.

**Field Measurements:** Individual field measurements may vary from computer-calculated predictions and should be taken in accordance with IESNA RP-6-15.

**Electrical System Requirements:** Refer to Amperage Draw Chart and/or the "Musco Control System Summary" for electrical sizing.

**Installation Requirements:** Results assume ± 3% nominal voltage at line side of the driver and structures located within 3 feet (1m) of design locations.



Pole location(s) ⊕ dimensions are relative to 0,0 reference point(s) ⊗



**We Make It Happen.**

Not to be reproduced in whole or part without the written consent of Musco Sports Lighting, LLC. ©1981, 2023 Musco Sports Lighting, LLC.

**ILLUMINATION SUMMARY**

**EQUIPMENT LIST FOR AREAS SHOWN**

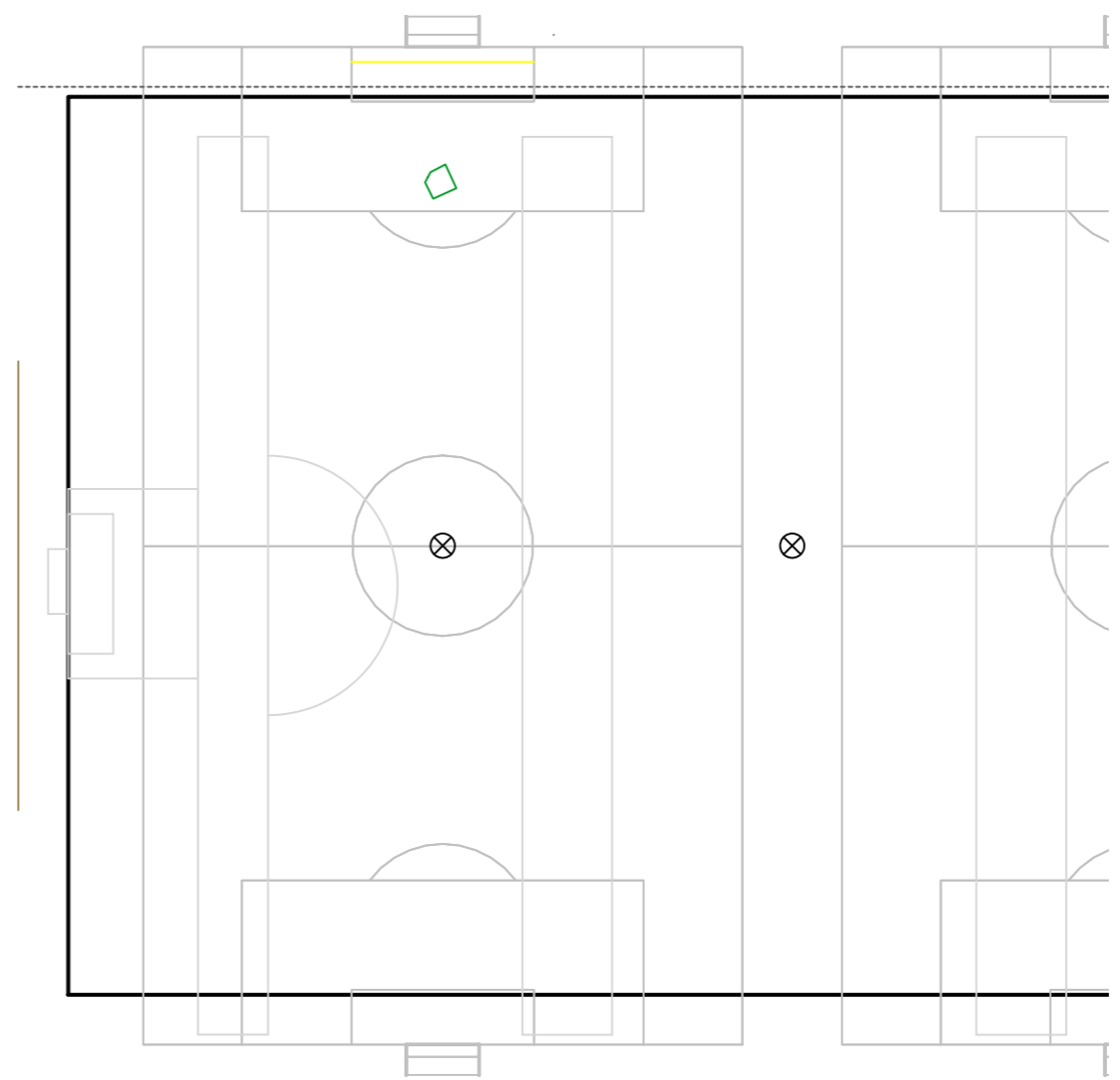
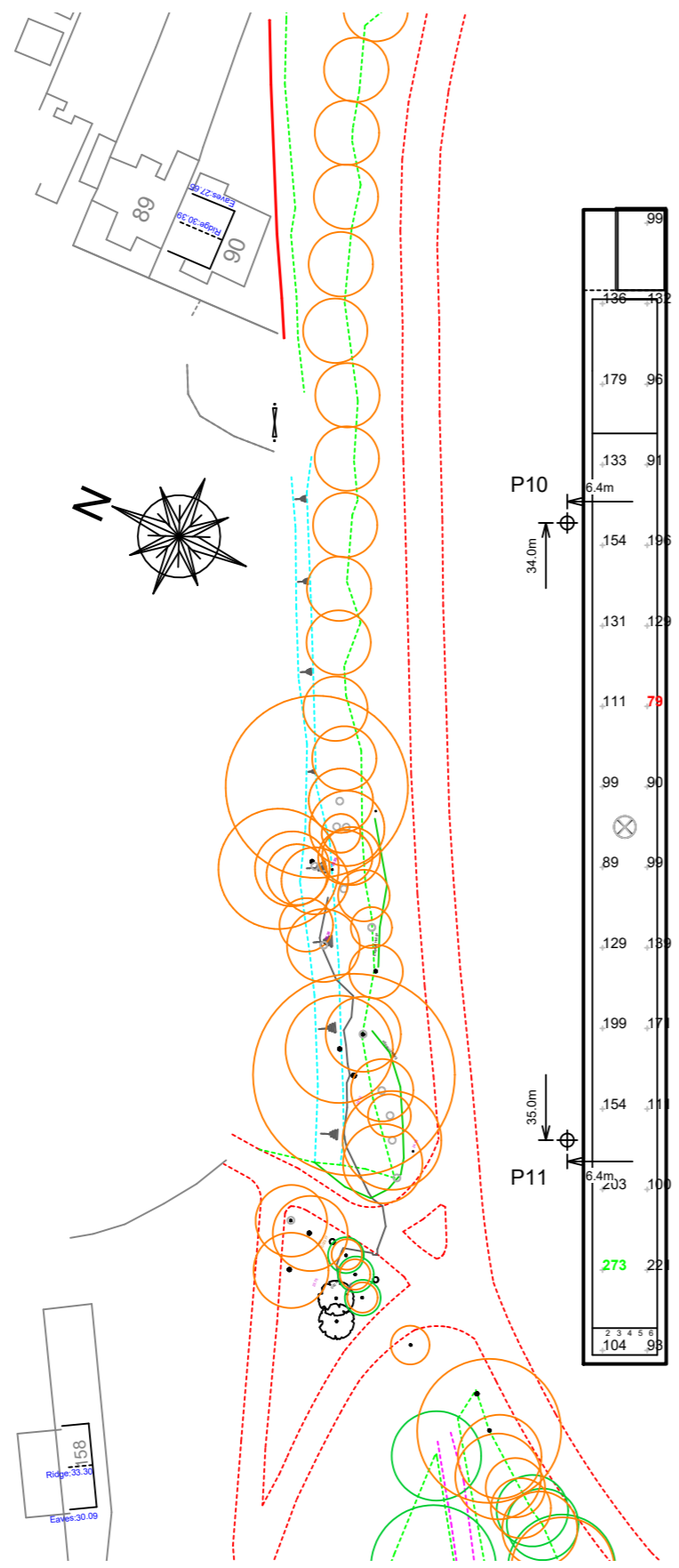
Pole			Luminaires					
QTY	LOCATION	SIZE	GRADE ELEVATION	MOUNTING HEIGHT	LUMINAIRE TYPE	QTY / POLE	THIS GRID	OTHER GRIDS
1	P10	15.24m	-	15.24m	TLC-LED-900	4	4	0
1	P11	15.24m	-	15.24m	TLC-LED-900	3	3	0
2	TOTALS					7	7	0

**Shanganagh Park Phase 1**  
Dublin, Leinster

GRID SUMMARY	
Name:	Track
Size:	9.3m x 129.0m
Spacing:	5.0m x 9.0m
Height:	1.0m above grade

ILLUMINATION SUMMARY (50% Dimming)	
MAINTAINED HORIZONTAL LUX	
	Entire Grid
Scan Average:	136
Maximum:	273
Minimum:	78.5
Min / Avg:	0.58
Min / Max:	0.29
UG (adjacent pts):	2.62
CU:	0.52
No. of Points:	29
LUMINAIRE INFORMATION	
Applied Circuits:	C
No. of Luminaires:	7
Total Load:	3.09 kW (50% dimming)

**Dimming Summary:** Values shown are estimated. Reducing wattage based on dimming can increase L90, L80, and L70 hours. See ILLUMINATION SUMMARY for complete analysis.



Pole location(s) ⊕ dimensions are relative to 0,0 reference point(s) ⊗



Not to be reproduced in whole or part without the written consent of Musco Sports Lighting, LLC. ©1981, 2023 Musco Sports Lighting, LLC.

# Shanganagh Park Phase 1

Dublin, Leinster

GRID SUMMARY	
Name:	Spill Blanket 2m
Size:	9.3m x 129.0m
Spacing:	10.0m x 10.0m
Height:	2.0m above grade

ILLUMINATION SUMMARY	
MAINTAINED HORIZONTAL LUX	
Scan Average:	126.44
Maximum:	735
Minimum:	0
Min / Avg:	0.00
Min / Max:	0.00
UG (adjacent pts):	289.20
CU:	0.99
No. of Points:	783

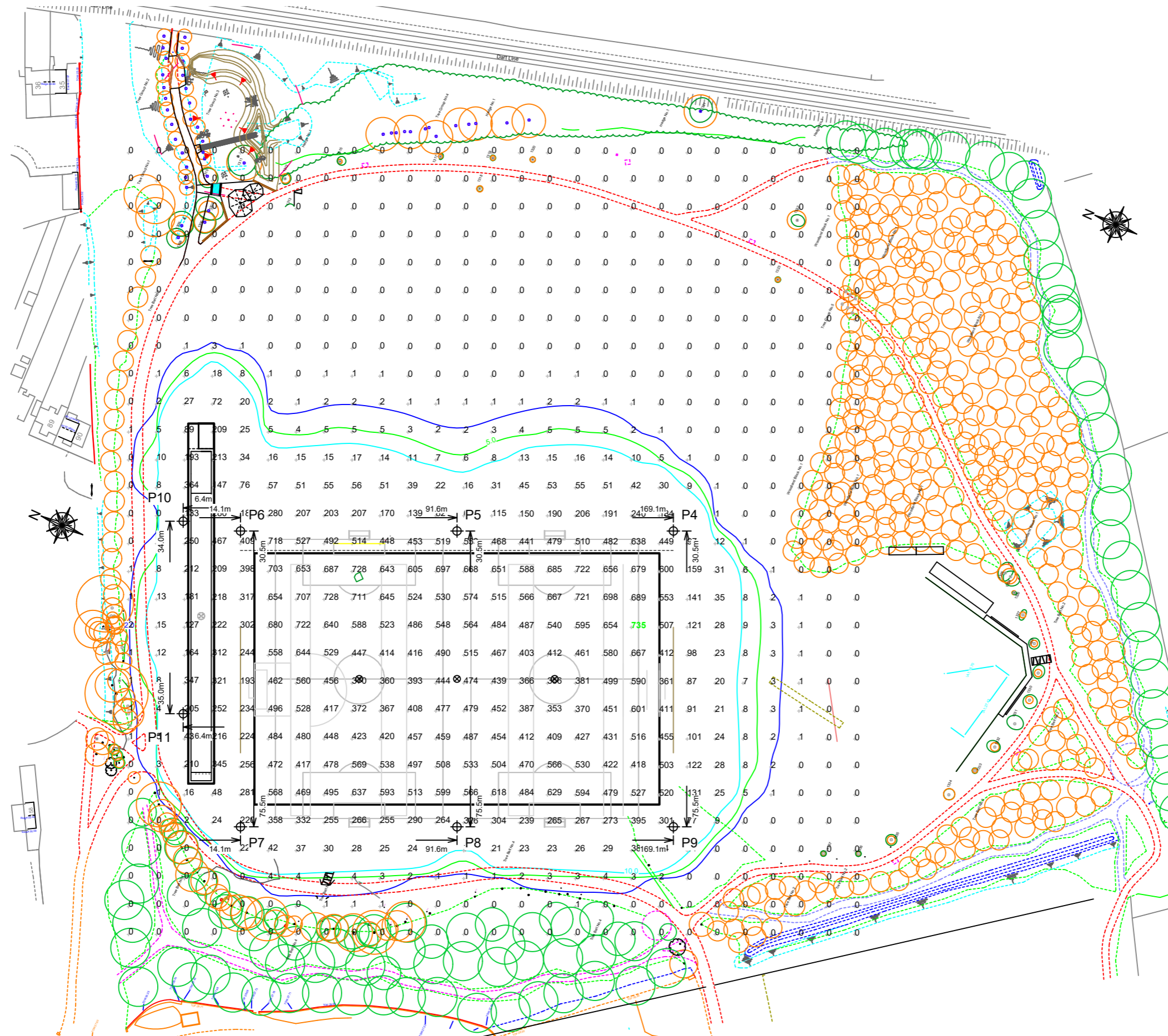
LUMINAIRE INFORMATION	
Applied Circuits:	A, B, C, D
No. of Luminaires:	63
Total Load:	75.46 kW

**Guaranteed Performance:** The ILLUMINATION described above is guaranteed per your Musco Warranty document and includes a 0.95 dirt depreciation factor.

**Field Measurements:** Individual field measurements may vary from computer-calculated predictions and should be taken in accordance with IESNA RP-6-15.

**Electrical System Requirements:** Refer to Amperage Draw Chart and/or the "Musco Control System Summary" for electrical sizing.

**Installation Requirements:** Results assume ± 3% nominal voltage at line side of the driver and structures located within 3 feet (1m) of design locations.



SCALE 1: 1500  
0 15m 30m

Pole location(s) ⊕ dimensions are relative to 0,0 reference point(s) ⊗





# Shanganagh Park Phase 1

Dublin, Leinster

GRID SUMMARY	
Name:	Spill Blanket 2m 50%
Size:	9.3m x 129.0m
Spacing:	10.0m x 10.0m
Height:	2.0m above grade

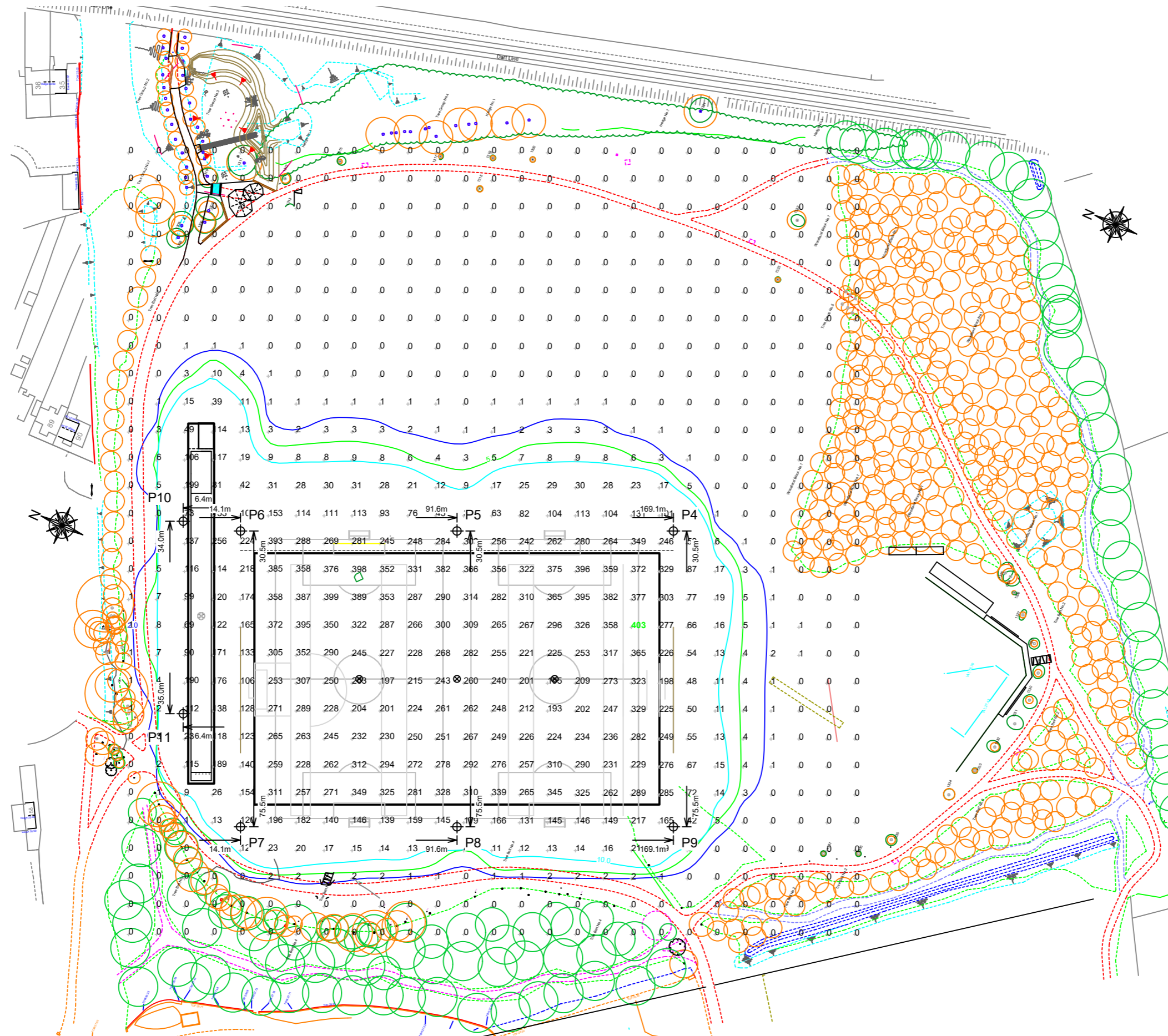
ILLUMINATION SUMMARY	
MAINTAINED HORIZONTAL LUX	
Entire Grid	
Scan Average:	69.24
Maximum:	403
Minimum:	0
Min / Avg:	0.00
Min / Max:	0.00
UG (adjacent pts):	289.20
CU:	0.99
No. of Points:	783
LUMINAIRE INFORMATION	
Applied Circuits:	A, B, C, D
No. of Luminaires:	63
Total Load:	75.46 kW

**Guaranteed Performance:** The ILLUMINATION described above is guaranteed per your Musco Warranty document and includes a 0.95 dirt depreciation factor.

**Field Measurements:** Individual field measurements may vary from computer-calculated predictions and should be taken in accordance with IESNA RP-6-15.

**Electrical System Requirements:** Refer to Amperage Draw Chart and/or the "Musco Control System Summary" for electrical sizing.

**Installation Requirements:** Results assume ± 3% nominal voltage at line side of the driver and structures located within 3 feet (1m) of design locations.



SCALE 1: 1500  
0 15m 30m

Pole location(s) ⊕ dimensions are relative to 0,0 reference point(s) ⊗



Not to be reproduced in whole or part without the written consent of Musco Sports Lighting, LLC. ©1981, 2023 Musco Sports Lighting, LLC.

# Shanganagh Park Phase 1

Dublin, Leinster

GRID SUMMARY	
Name:	Spill Blanket 1m
Size:	9.3m x 129.0m
Spacing:	10.0m x 10.0m
Height:	1.0m above grade

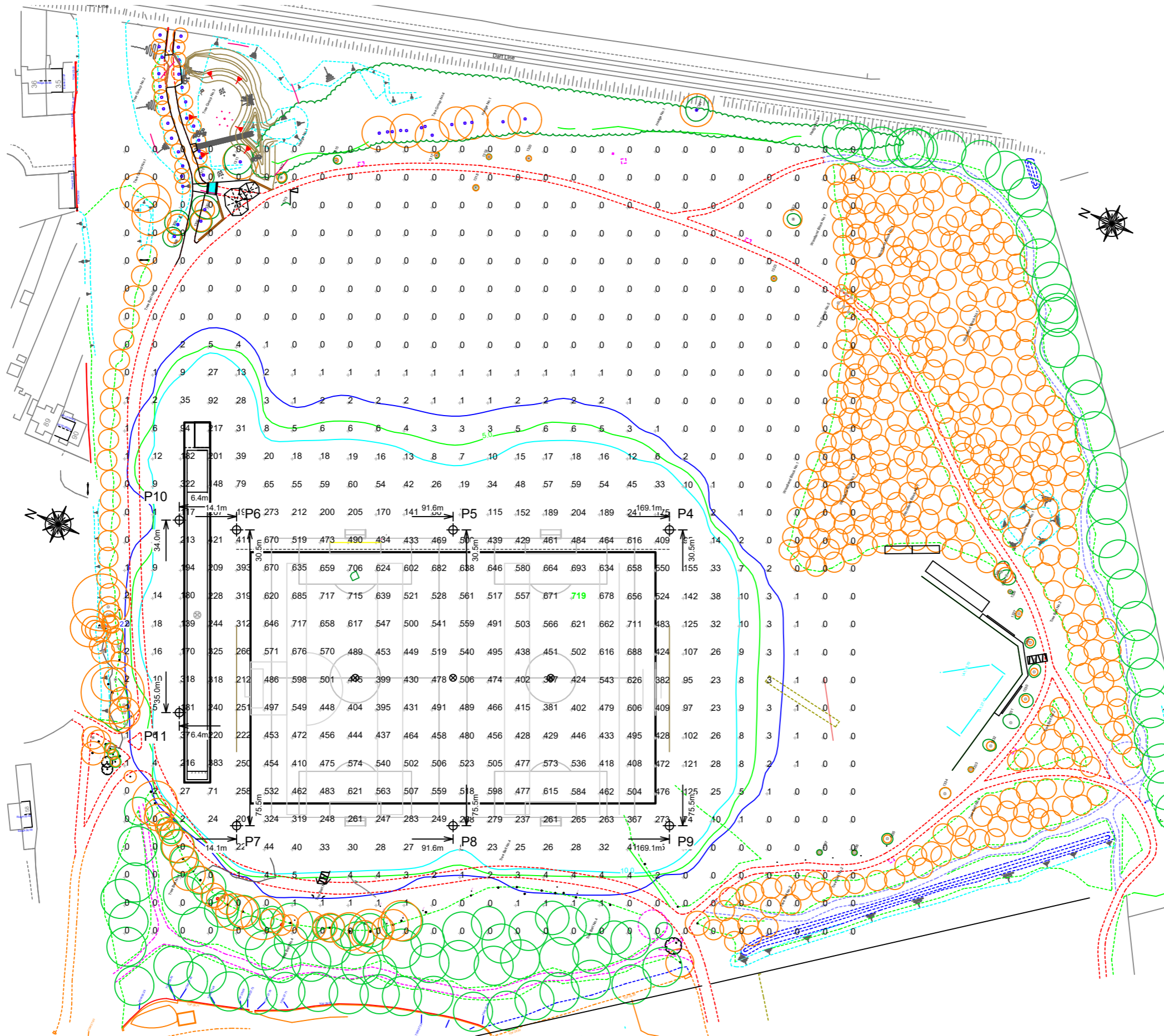
ILLUMINATION SUMMARY	
MAINTAINED HORIZONTAL LUX	
	Entire Grid
Scan Average:	126.51
Maximum:	719
Minimum:	0
Min / Avg:	0.00
Min / Max:	0.00
UG (adjacent pts):	172.92
CU:	0.99
No. of Points:	783
LUMINAIRE INFORMATION	
Applied Circuits:	A, B, C, D
No. of Luminaires:	63
Total Load:	75.46 kW

**Guaranteed Performance:** The ILLUMINATION described above is guaranteed per your Musco Warranty document and includes a 0.95 dirt depreciation factor.

**Field Measurements:** Individual field measurements may vary from computer-calculated predictions and should be taken in accordance with IESNA RP-6-15.

**Electrical System Requirements:** Refer to Amperage Draw Chart and/or the "Musco Control System Summary" for electrical sizing.

**Installation Requirements:** Results assume ± 3% nominal voltage at line side of the driver and structures located within 3 feet (1m) of design locations.



SCALE 1: 1500  
0 15m 30m

Pole location(s) ⊕ dimensions are relative to 0,0 reference point(s) ⊗



Not to be reproduced in whole or part without the written consent of Musco Sports Lighting, LLC. ©1981, 2023 Musco Sports Lighting, LLC.



# Shanganagh Park Phase 1

Dublin, Leinster

GRID SUMMARY	
Name:	Spill Blanket 1m 50%
Size:	9.3m x 129.0m
Spacing:	10.0m x 10.0m
Height:	1.0m above grade

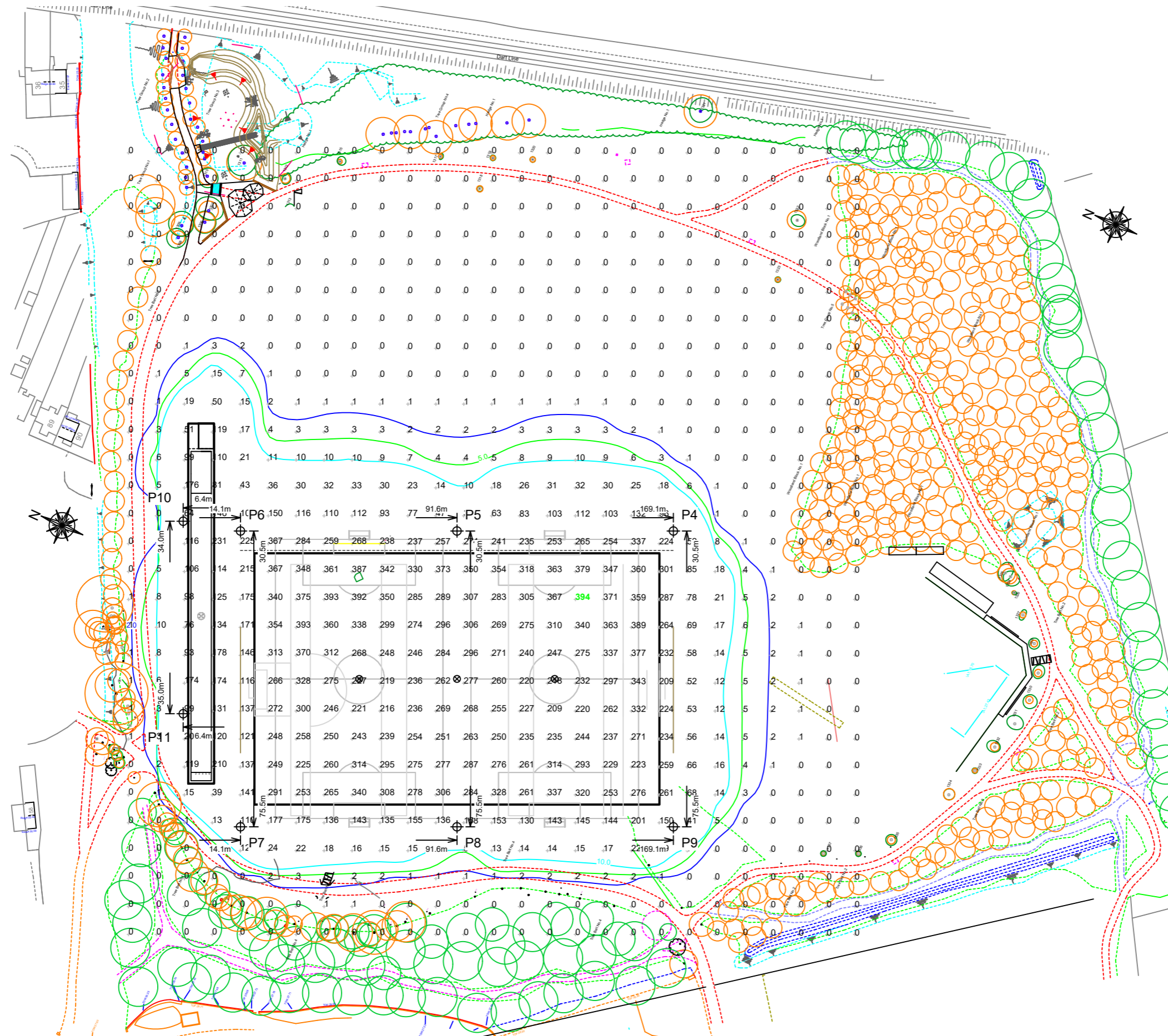
ILLUMINATION SUMMARY	
MAINTAINED HORIZONTAL LUX	
	Entire Grid
Scan Average:	69.28
Maximum:	394
Minimum:	0
Min / Avg:	0.00
Min / Max:	0.00
UG (adjacent pts):	172.92
CU:	0.99
No. of Points:	783
LUMINAIRE INFORMATION	
Applied Circuits:	A, B, C, D
No. of Luminaires:	63
Total Load:	75.46 kW

**Guaranteed Performance:** The ILLUMINATION described above is guaranteed per your Musco Warranty document and includes a 0.95 dirt depreciation factor.

**Field Measurements:** Individual field measurements may vary from computer-calculated predictions and should be taken in accordance with IESNA RP-6-15.

**Electrical System Requirements:** Refer to Amperage Draw Chart and/or the "Musco Control System Summary" for electrical sizing.

**Installation Requirements:** Results assume ± 3% nominal voltage at line side of the driver and structures located within 3 feet (1m) of design locations.



SCALE 1: 1500  
0 15m 30m

Pole location(s) ⊕ dimensions are relative to 0,0 reference point(s) ⊗



Not to be reproduced in whole or part without the written consent of Musco Sports Lighting, LLC. ©1981, 2023 Musco Sports Lighting, LLC.

# Shanganagh Park Phase 1

Dublin, Leinster

GRID SUMMARY	
Name:	Spill line 2m
Spacing:	10.0m
Height:	2.0m above grade

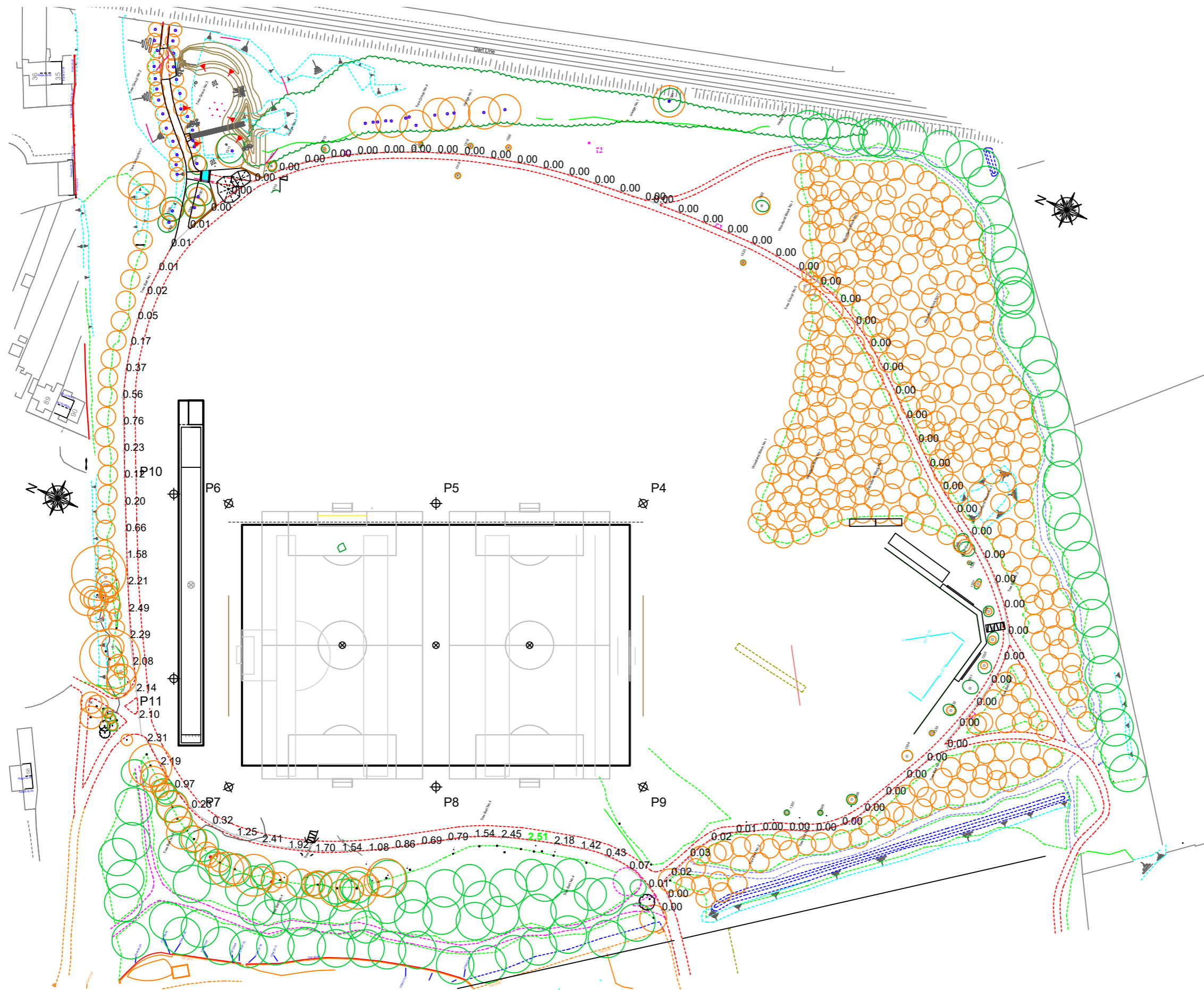
ILLUMINATION SUMMARY	
HORIZONTAL LUX	
Scan Average:	Entire Grid 0.4612
Maximum:	2.51
Minimum:	0.00
No. of Points:	102
LUMINAIRE INFORMATION	
Applied Circuits:	A, B, C, D
No. of Luminaires:	63
Total Load:	75.46 kW

**Guaranteed Performance:** The ILLUMINATION described above is guaranteed per your Musco Warranty document.

**Field Measurements:** Individual field measurements may vary from computer-calculated predictions and should be taken in accordance with IESNA RP-6-15.

**Electrical System Requirements:** Refer to Amperage Draw Chart and/or the "Musco Control System Summary" for electrical sizing.

**Installation Requirements:** Results assume  $\pm 3\%$  nominal voltage at line side of the driver and structures located within 3 feet (1m) of design locations.



SCALE 1: 1500  
0 15m 30m

Pole location(s) ⊕ dimensions are relative to 0,0 reference point(s) ⊗



Not to be reproduced in whole or part without the written consent of Musco Sports Lighting, LLC. ©1981, 2023 Musco Sports Lighting, LLC.



# Shanganagh Park Phase 1

Dublin, Leinster

GRID SUMMARY	
Name:	Spill line 2m 50%
Spacing:	10.0m
Height:	2.0m above grade

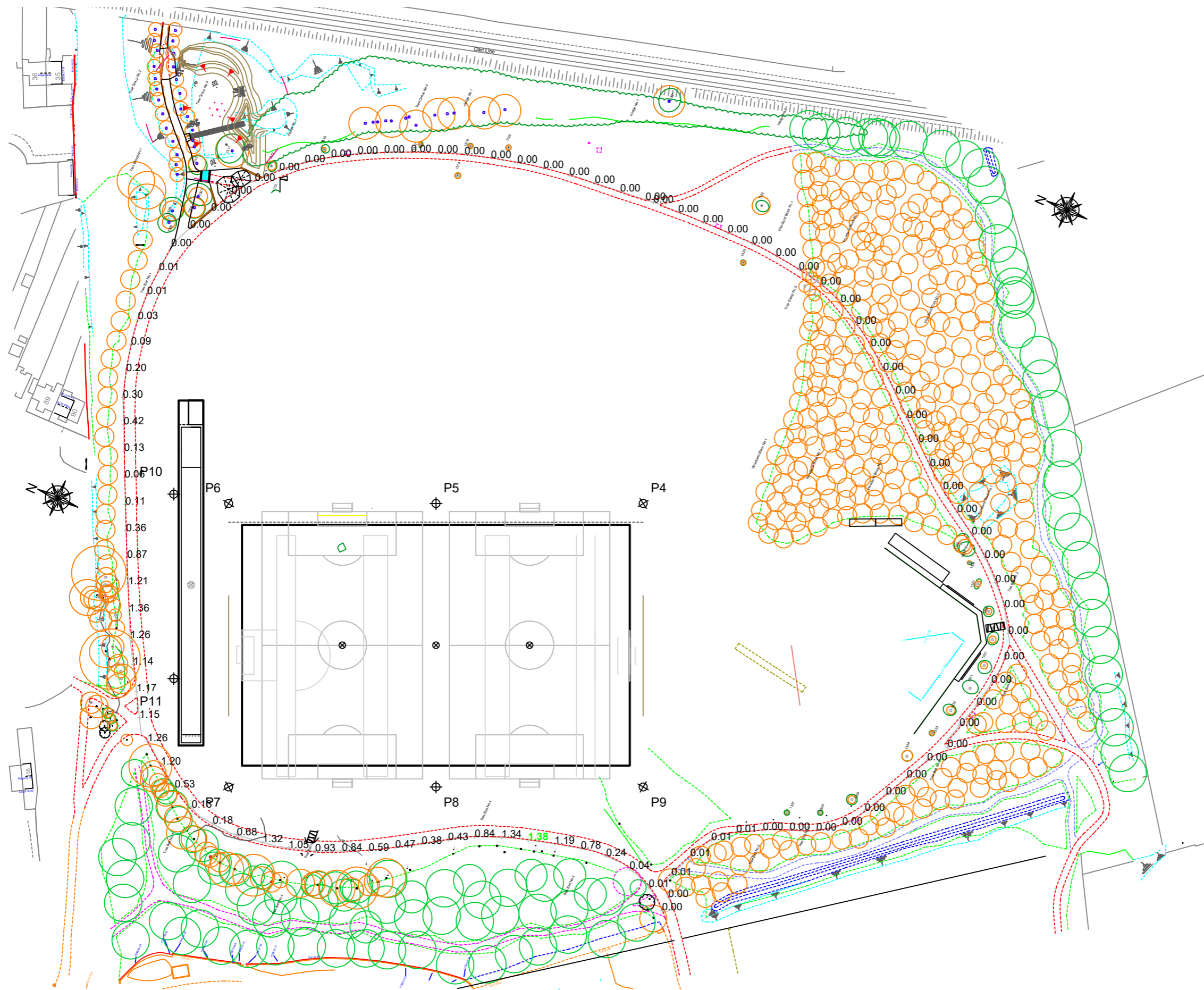
ILLUMINATION SUMMARY	
HORIZONTAL LUX	
Scan Average:	Entire Grid 0.2525
Maximum:	1.38
Minimum:	0.00
No. of Points:	102
LUMINAIRE INFORMATION	
Applied Circuits:	A, B, C, D
No. of Luminaires:	63
Total Load:	75.46 kW

**Guaranteed Performance:** The ILLUMINATION described above is guaranteed per your Musco Warranty document.

**Field Measurements:** Individual field measurements may vary from computer-calculated predictions and should be taken in accordance with IESNA RP-6-15.

**Electrical System Requirements:** Refer to Amperage Draw Chart and/or the "Musco Control System Summary" for electrical sizing.

**Installation Requirements:** Results assume ± 3% nominal voltage at line side of the driver and structures located within 3 feet (1m) of design locations.



SCALE 1: 1500  
0 15m 30m

Pole location(s) ⊕ dimensions are relative to 0,0 reference point(s) ⊗



Not to be reproduced in whole or part without the written consent of Musco Sports Lighting, LLC. ©1981, 2023 Musco Sports Lighting, LLC.

## ILLUMINATION SUMMARY

# Shanganagh Park Phase 1

Dublin, Leinster

GRID SUMMARY	
Name:	Spill line 1m
Spacing:	10.0m
Height:	1.0m above grade

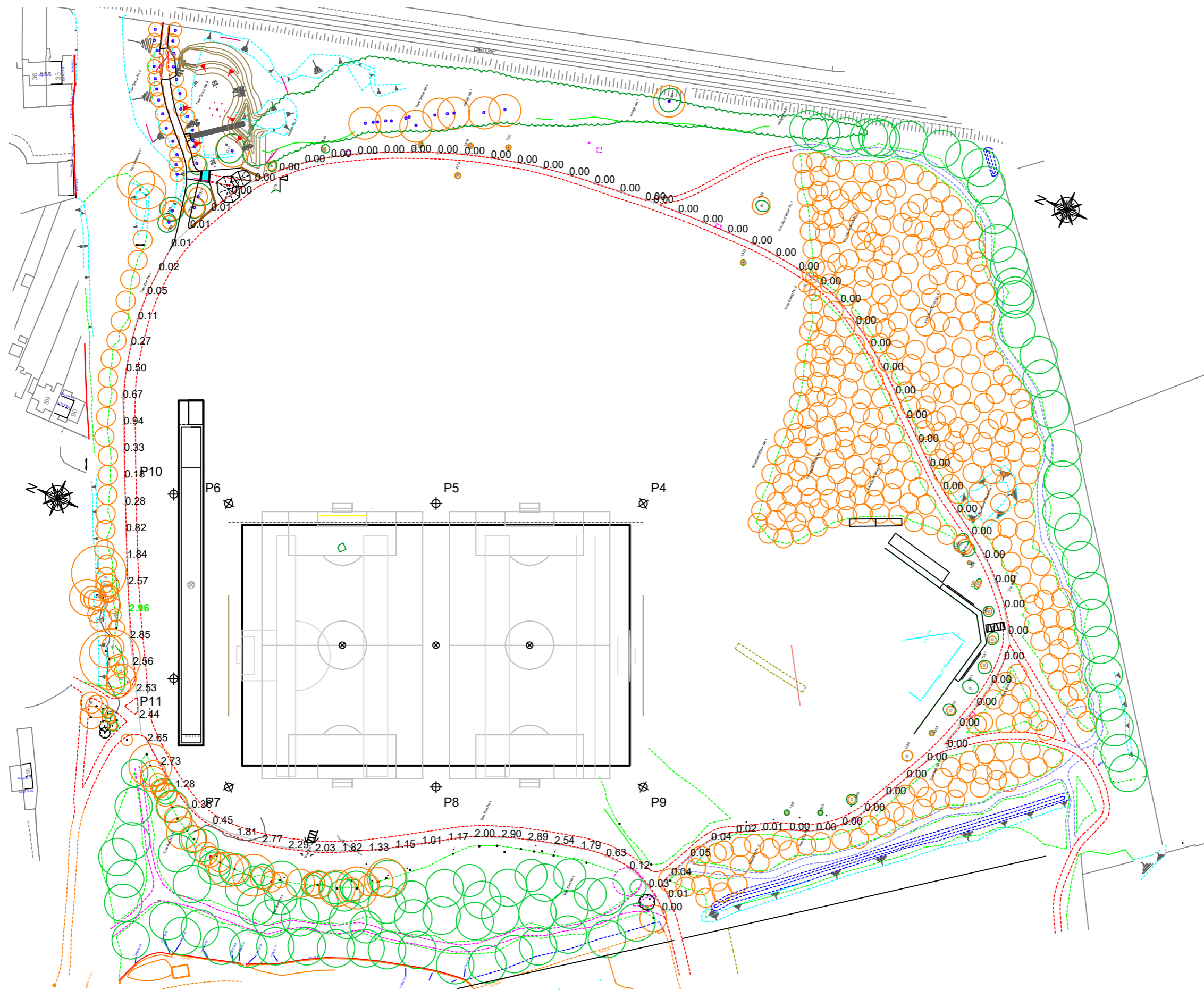
ILLUMINATION SUMMARY	
HORIZONTAL LUX	
Scan Average:	Entire Grid 0.5675
Maximum:	2.96
Minimum:	0.00
No. of Points:	102
LUMINAIRE INFORMATION	
Applied Circuits:	A, B, C, D
No. of Luminaires:	63
Total Load:	75.46 kW

**Guaranteed Performance:** The ILLUMINATION described above is guaranteed per your Musco Warranty document.

**Field Measurements:** Individual field measurements may vary from computer-calculated predictions and should be taken in accordance with IESNA RP-6-15.

**Electrical System Requirements:** Refer to Amperage Draw Chart and/or the "Musco Control System Summary" for electrical sizing.

**Installation Requirements:** Results assume  $\pm 3\%$  nominal voltage at line side of the driver and structures located within 3 feet (1m) of design locations.



SCALE 1: 1500  
0 15m 30m

Pole location(s) ⊕ dimensions are relative to 0,0 reference point(s) ⊗



Not to be reproduced in whole or part without the written consent of Musco Sports Lighting, LLC. ©1981, 2023 Musco Sports Lighting, LLC.



# Shanganagh Park Phase 1

Dublin, Leinster

GRID SUMMARY	
Name:	Spill line 1m 50%
Spacing:	10.0m
Height:	1.0m above grade

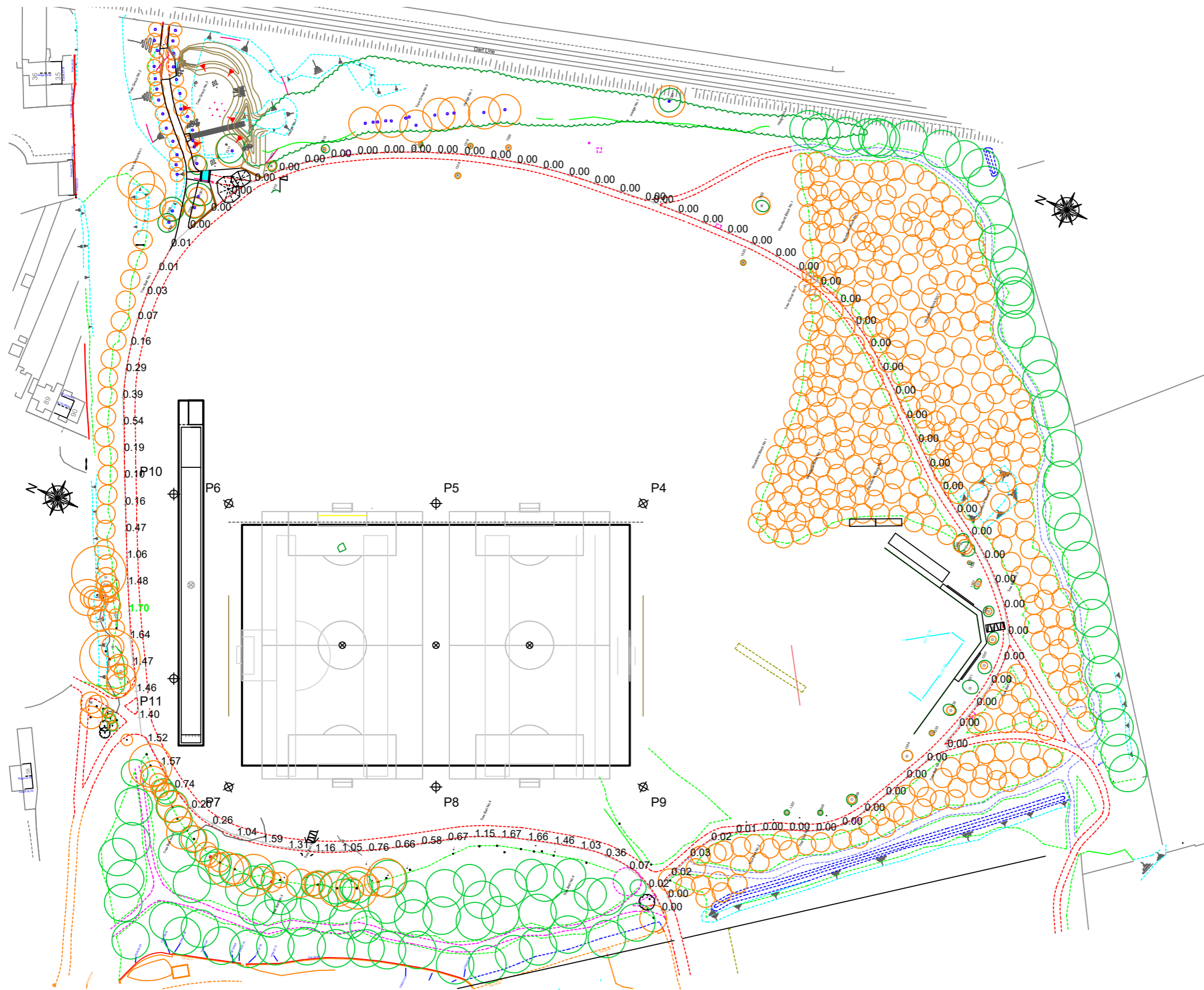
ILLUMINATION SUMMARY	
HORIZONTAL LUX	
Scan Average:	Entire Grid 0.3263
Maximum:	1.70
Minimum:	0.00
No. of Points:	102
LUMINAIRE INFORMATION	
Applied Circuits:	A, B, C, D
No. of Luminaires:	63
Total Load:	75.46 kW

**Guaranteed Performance:** The ILLUMINATION described above is guaranteed per your Musco Warranty document.

**Field Measurements:** Individual field measurements may vary from computer-calculated predictions and should be taken in accordance with IESNA RP-6-15.

**Electrical System Requirements:** Refer to Amperage Draw Chart and/or the "Musco Control System Summary" for electrical sizing.

**Installation Requirements:** Results assume  $\pm 3\%$  nominal voltage at line side of the driver and structures located within 3 feet (1m) of design locations.



SCALE 1: 1500  
0 15m 30m

Pole location(s) ⊕ dimensions are relative to 0,0 reference point(s) ⊗



Not to be reproduced in whole or part without the written consent of Musco Sports Lighting, LLC. ©1981, 2023 Musco Sports Lighting, LLC.

# Shanganagh Park Phase 1

Dublin, Leinster

## EQUIPMENT LAYOUT

- INCLUDES:**
- GAA Pitch 1
  - Soccer 1
  - Soccer 2
  - Track

**Electrical System Requirements:** Refer to Amperage Draw Chart and/or the "Musco Control System Summary" for electrical sizing.

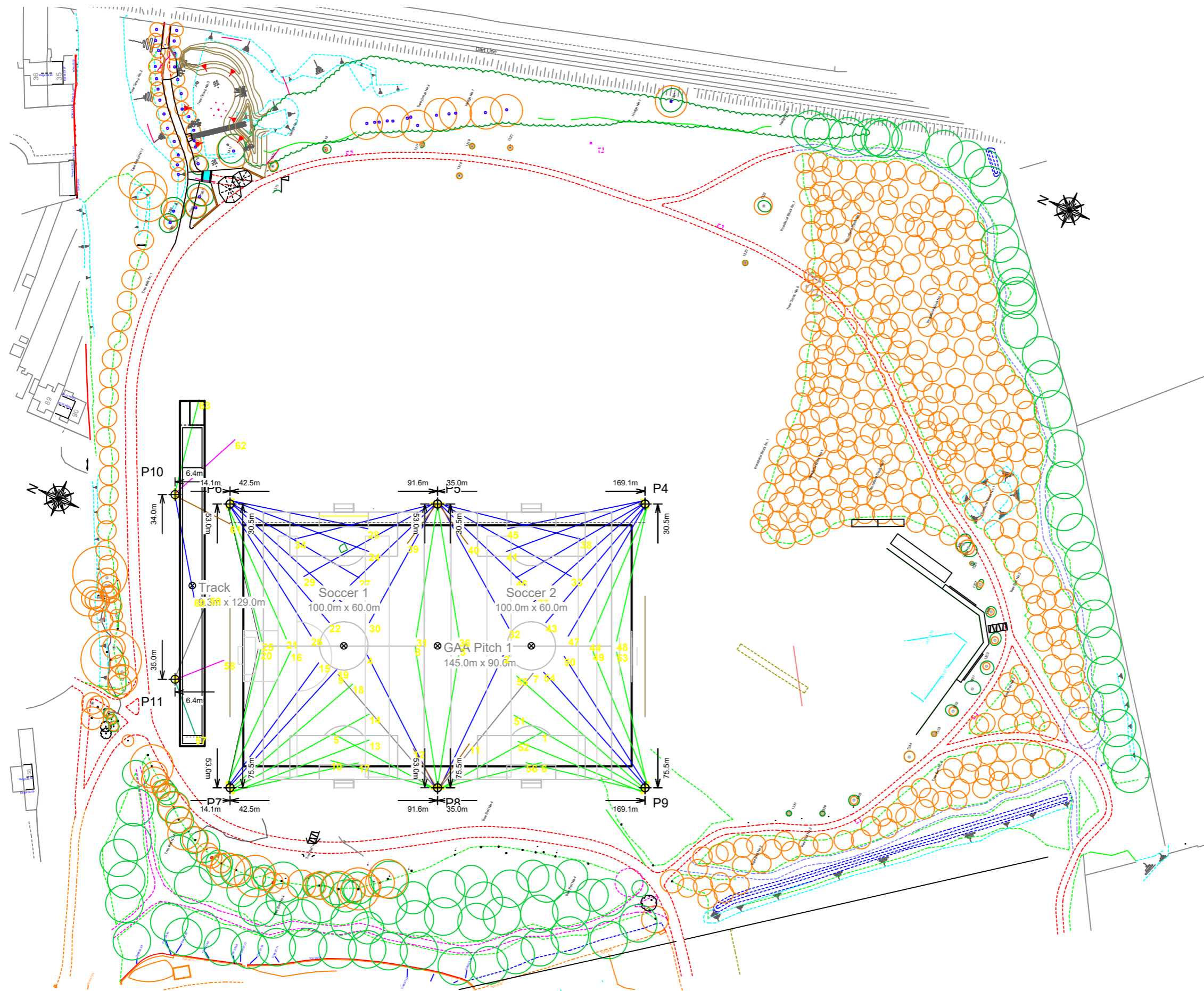
**Installation Requirements:** Results assume ± 3% nominal voltage at line side of the driver and structures located within 3 feet (1m) of design locations.

## EQUIPMENT LIST FOR AREAS SHOWN

QTY	LOCATION	Pole		Luminaires		QTY / POLE
		SIZE	GRADE ELEVATION	MOUNTING HEIGHT	LUMINAIRE TYPE	
2	P4, P6	24.38m	-	24.38m	TLC-LED-1500	8
1	P5	24.38m	-	15.24m	TLC-LED-600	2
2	P7, P9	24.38m	-	24.38m	TLC-LED-900	4
1	P8	24.38m	-	24.38m	TLC-LED-900	4
				15.24m	TLC-LED-600	2
1	P10	15.24m	-	24.38m	TLC-LED-1500	6
				15.24m	TLC-LED-900	4
1	P11	15.24m	-	15.24m	TLC-LED-900	3
8	TOTALS					63

## SINGLE LUMINAIRE AMPERAGE DRAW CHART

Driver (.90 min power factor)	Line Amperage Per Luminaire (max draw)					
	220 (50)	230 (50)	240 (50)	380 (50)	400 (50)	415 (50)
Single Phase Voltage						
TLC-LED-1500	7.9	7.6	7.3	4.6	4.4	4.2
TLC-LED-900	5.0	4.8	4.6	2.9	2.8	2.7
TLC-LED-600	3.2	3.1	3.0	1.9	1.8	1.7



SCALE 1: 1500  
0 15m 30m

Pole location(s) ⊕ dimensions are relative to 0,0 reference point(s) ⊗

