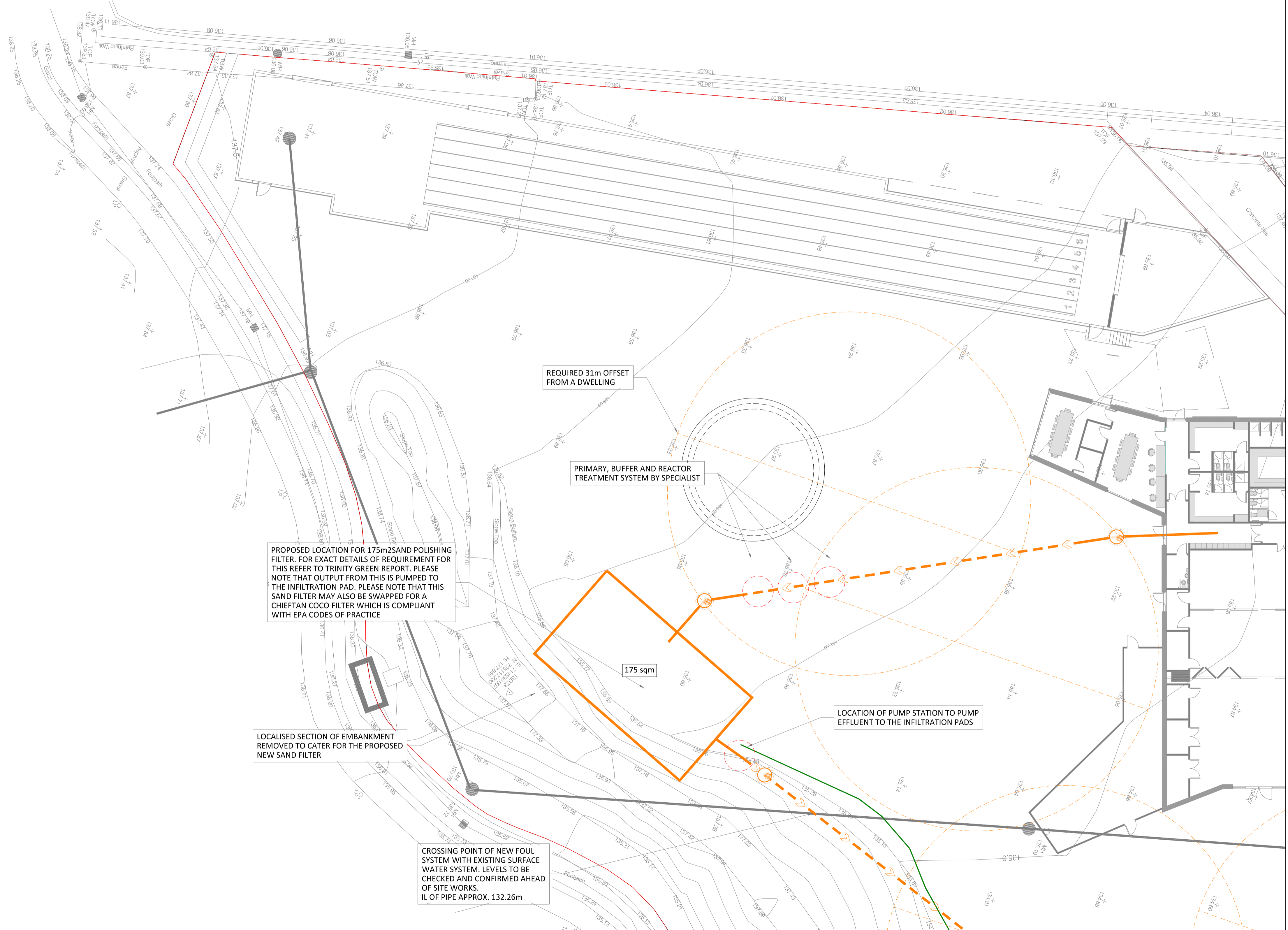
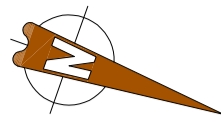


**GENERAL NOTES:**

1. ALL NOTED LEVELS ARE TO ORDNANCE DATUM, MALIN HEAD.
2. REFER TO ARCHITECT'S LAYOUT FOR ALL SET-OUT INFORMATION.
3. REFER TO ARCHITECT / LANDSCAPE ARCHITECT'S DESIGN DRAWINGS FOR DETAILS OF PROPOSED SURFACE FINISHES AND LANDSCAPING.
4. REFER TO ARCHITECT DRAWINGS FOR DETAILS OF PRIVATE DRAINAGE.
5. ALL SURFACE WATER DRAINAGE IS TO BE INSTALLED IN ACCORDANCE WITH THE GREATER DUBLIN REGION CODE OF PRACTICE FOR DRAINAGE WORKS, THE BUILDING REGULATIONS PART H AND THE SITE DEVELOPMENT SPECIFICATION.
6. ALL CAR PARK DRAINAGE IS TO BE INSTALLED IN ACCORDANCE WITH THE GREATER DUBLIN REGION CODE OF PRACTICE FOR DRAINAGE WORKS, THE BUILDING REGULATIONS PART H AND THE SITE DEVELOPMENT SPECIFICATION.
7. ALL WASTEWATER DRAINAGE IS TO BE INSTALLED IN ACCORDANCE WITH THE IRISH WATER CODE OF PRACTICE FOR WASTEWATER INFRASTRUCTURE (REVISION 2 - JULY 2020), THE BUILDING REGULATIONS PART H AND THE SITE DEVELOPMENT SPECIFICATION.
8. ALL DRAINAGE COVER LEVELS ARE TO BE COORDINATED WITH PROPOSED ROAD DESIGN LEVELS AND ARCHITECT/LANDSCAPE ARCHITECT'S PROPOSED FINISH LEVELS.
9. ALL BASEMENT CHAMBER COVERS TO BE DOUBLE SEALED, AND CLASSIFICATION D400 LOADING WHERE LOCATED IN VEHICULAR AREAS.
10. ALL CONNECTIONS TO NEW DRAINAGE NETWORKS ARE TO BE MADE AT AN ANGLE OF 90° OR IN THE DIRECTION OF FLOW.
11. REFER TO ARCHITECT AND M&E ENGINEERING DESIGN DRAWINGS FOR CONFIRMATION OF LOCATION AND SPECIFICATION OF FLOOR GULLIES.
12. REFER TO M&E ENGINEERING DESIGN FOR CONFIRMATION OF WASTE AND SANITARY POP-UP/OUTLET LOCATIONS.
13. THE CONTRACTOR IS TO VERIFY INVERT LEVEL AT PROPOSED CONNECTION TO EXISTING SEWERS, PRIOR TO ANY OTHER WORKS BEING CARRIED OUT, AND MAKE ANY DISCREPANCIES KNOWN TO THE ENGINEER.
14. THE CONTRACTOR IS RESPONSIBLE FOR CONFIRMATION OF PRESENCE ALL EXISTING UTILITIES, IF ANY, ALONG ROUTE OF PROPOSED DRAINAGE NETWORKS - BY INTRUSIVE INVESTIGATION OR EQUAL.
15. EXISTING PUBLIC SEWER TO BE JET CLEANED AND CCTV SURVEYED PRIOR TO, AND AFTER PROPOSED CONNECTIONS FROM NEW NETWORK.
16. ALL NEW DRAINAGE INFRASTRUCTURE TO BE JET CLEANED AND CCTV SURVEYED, WITH ANY NOTED DEFECTS REMEDIATED, ON COMPLETION OF WORKS, TO THE SATISFACTION OF THE LOCAL AUTHORITY.

**LEGEND:**

- EXTENT OF WORKS BOUNDARY —
- PROPOSED WASTEWATER RISING MAIN - - -
- PROPOSED FOUL DRAINAGE - - -
- PROPOSED FOUL MANHOLE
- LINE OF EXISTING SITE SERVICES —



- THIS DRAWING TO BE READ IN CONJUNCTION WITH ALL OTHER RELEVANT DESIGN TEAM DRAWINGS AND SPECIFICATIONS.
- FOR SETTING OUT REFER TO ARCHITECT'S DRAWINGS. DO NOT SCALE THIS DRAWING. USE FIGURED DIMENSIONS ONLY.
- NO PART OF THIS DOCUMENT MAY BE REPRODUCED OR TRANSMITTED IN ANY FORM OR STORED IN ANY RETRIEVAL SYSTEM OF ANY NATURE WITHOUT THE WRITTEN PERMISSION OF O'CONNOR SUTTON CRONIN AS COPYRIGHT HOLDER EXCEPT AS AGREED FOR USE ON THE PROJECT FOR WHICH THE DOCUMENT WAS ORIGINALLY ISSUED.

Rev No.	Date	Revision Note	Drn by	Chkd by
P01	26/02/24	SUITABLE FOR INFORMATION	MC	SD
P02	28/02/24	SUITABLE FOR INFORMATION	MC	SD

Rev No.	Date	Revision Note	Drn by	Chkd by



**OCSC**  
**O'CONNOR SUTTON CRONIN**  
 MULTIDISCIPLINARY CONSULTING ENGINEERS  
 Civil / Structural / Environmental / Mechanical / Electrical / Sustainability  
 Dublin Office: 9 Prussia Street, Dublin 7, D07 KT57.  
 Tel: +353 (0)1 8682000 Web: www.ocsc.ie  
 Dublin • London • Belfast • Galway • Cork • Birmingham

Client: DSD ATHLETICS AND DLRDCC	
Project: MULTI PURPOSE LEISURE FACILITY AT ST THOMAS FIELDS	
Title: PROPOSED FOUL WATER LAYOUT SHEET 2 OF 4	
Code	Originator   Zone   Level   Type   Role   Number   Status   Revision
D823	OCSC · XX · DR · C · 0506 S2 P02
Date: FEB '24 Scale @ A1: 1:200 Drn by MC Chkd by SD Aprvd by SD	