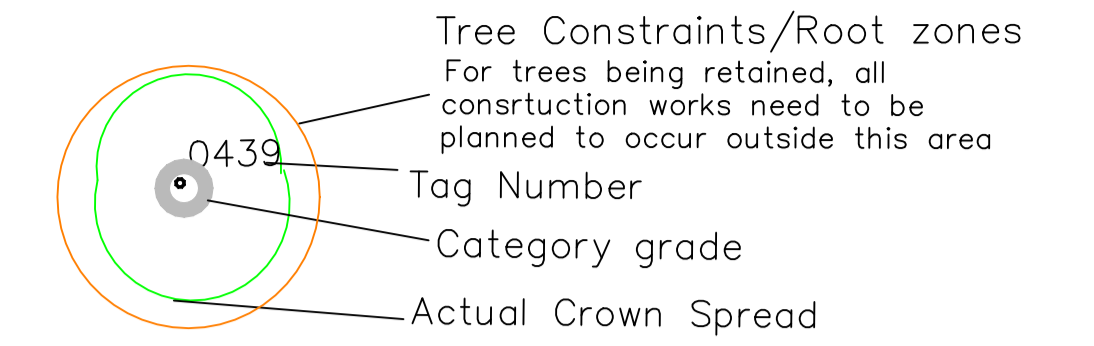
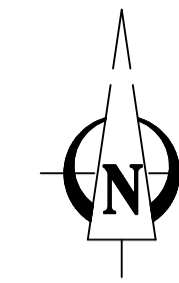


# Notes:



BS5837: 2012 – Category Retention Rating

**Category U Trees** –  
Trees in such a condition that any existing value would be lost within 10 years or being recommended for removal sound arboricultural practice.

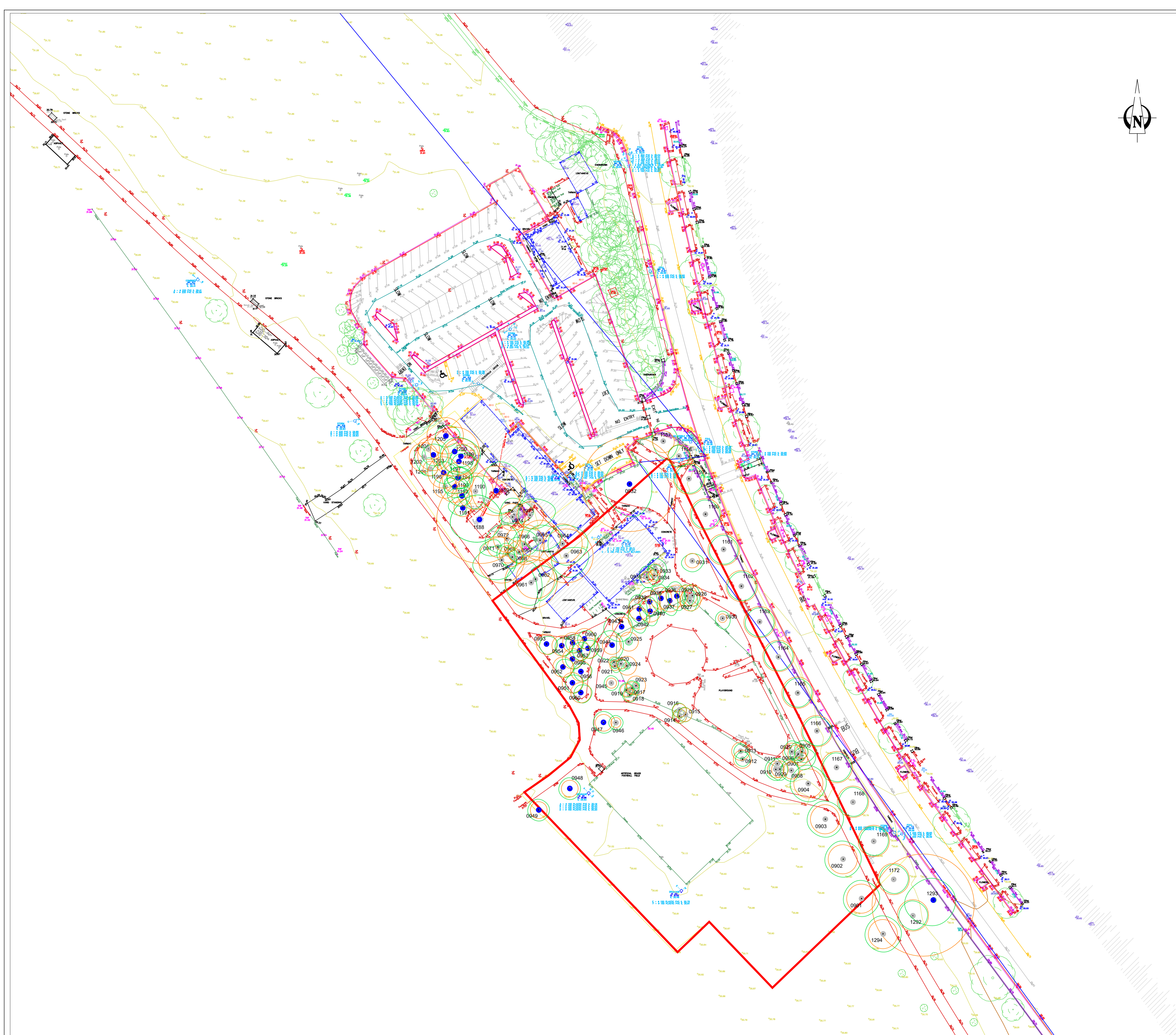
**Category A Trees**  
Trees of high quality/value with a min. of 40 years life expectancy.

**Category B Trees**  
Trees of moderate quality/value with a min. of 20 years life expectancy.

**Category C Trees**  
Trees of low quality/value with a min. of 10 years life expectancy.

**Sub Categories**

- 1 – Mainly Arboricultural values
- 2 – Mainly Landscape values
- 3 – Mainly cultural and conservation values.



**ARBORIST ASSOCIATES LTD.**

94 BALLYBAWN COTTAGES, ENNISKERRY, CO. WICKLOW  
TEL: 01-2742011 / 087-2629589

**TITLE:** Tree Constraints Plan

**Site:** Kilgobbet Park, Cabinteely,  
Dublin 18.

<b>DATE:</b>	Dwg No.KBP001	Scale 1:500 © A1
--------------	---------------	------------------