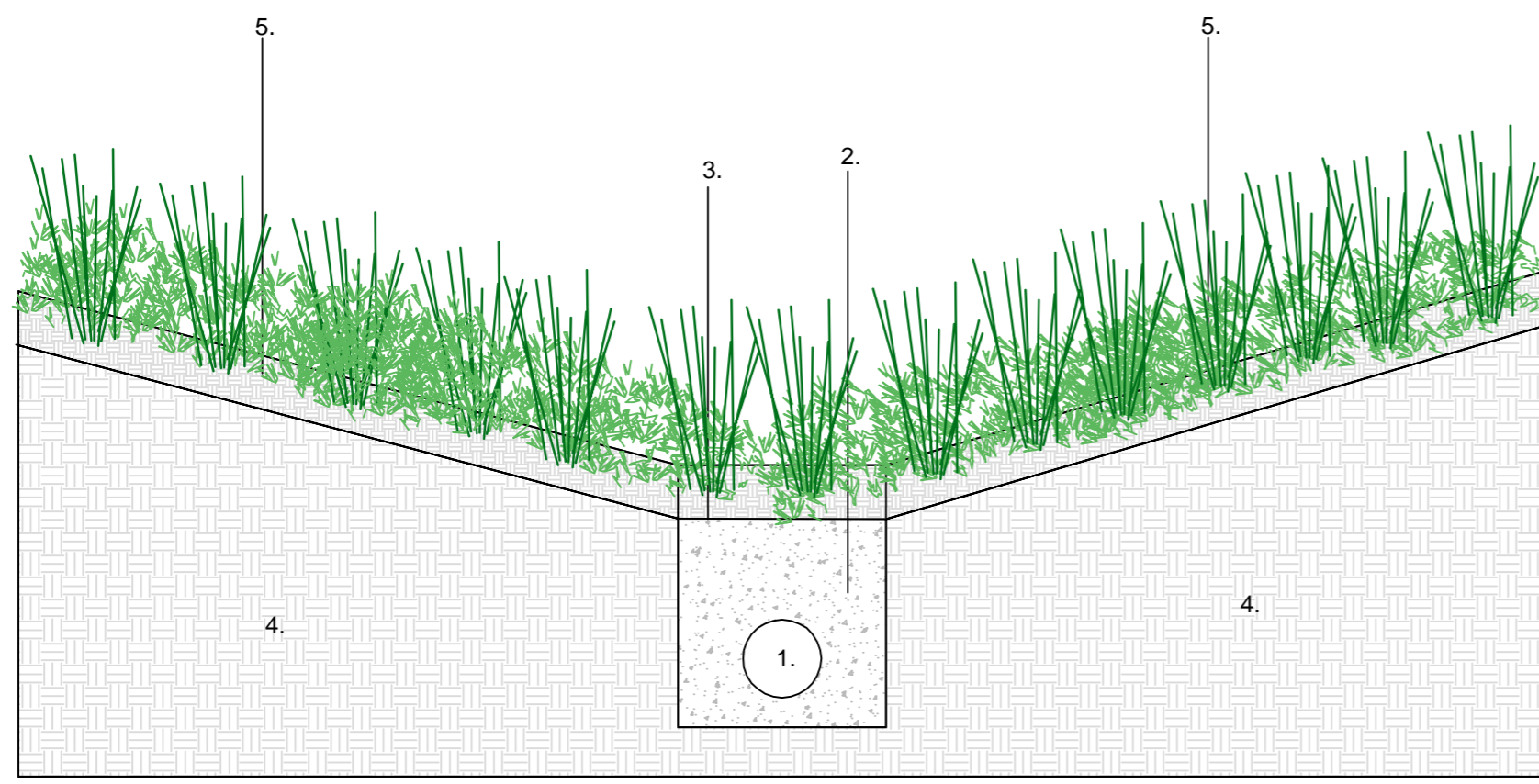
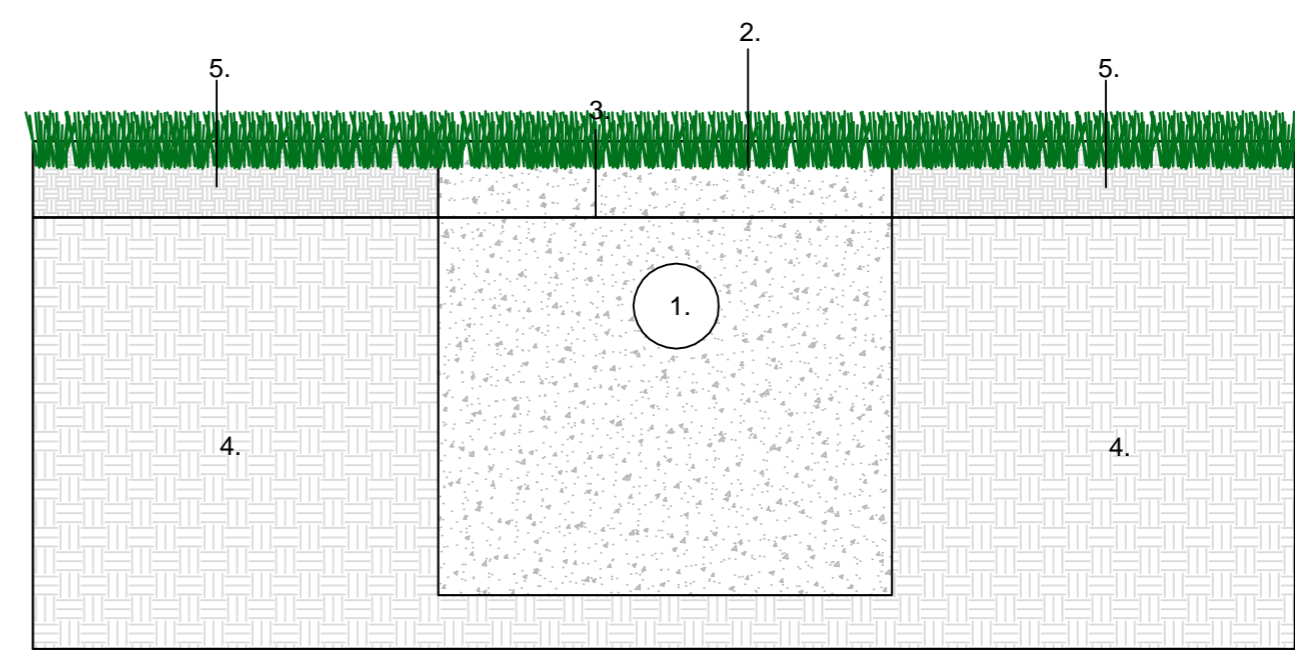


Drainage

Scale: 1/20

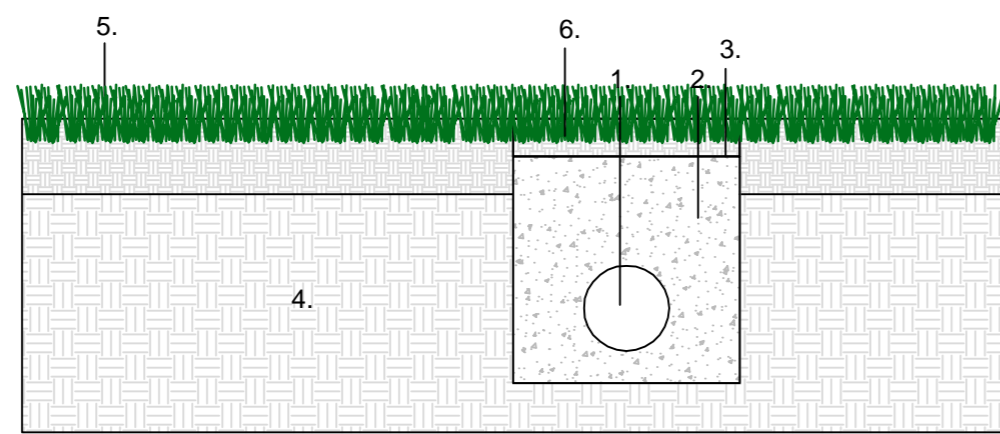


Indicative Detail 009: Swale

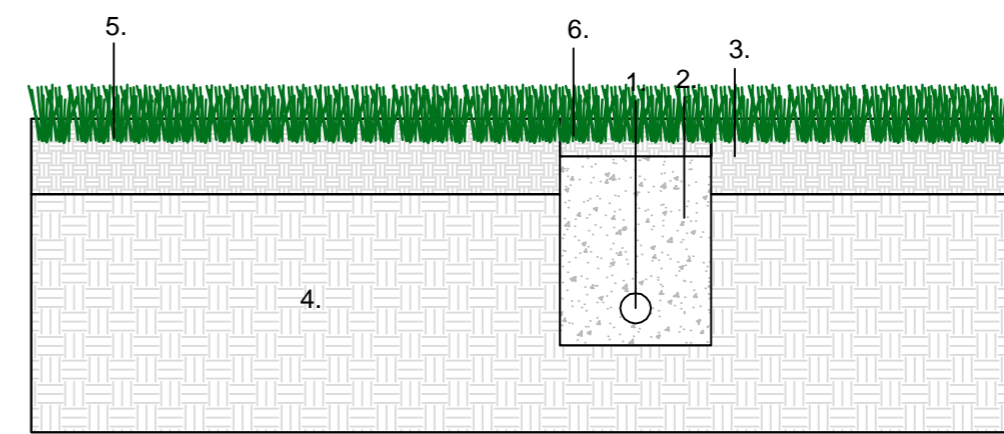


Indicative Detail 010: Filter Drain

1. Perforated pipe.
2. Clean durable granular fill to comply with IS EN 12620:2002.
3. Geotextile membrane
4. Subsoil material
5. Topsoil & grass/naturalised planting
6. Sand/Soil Mix & Grass



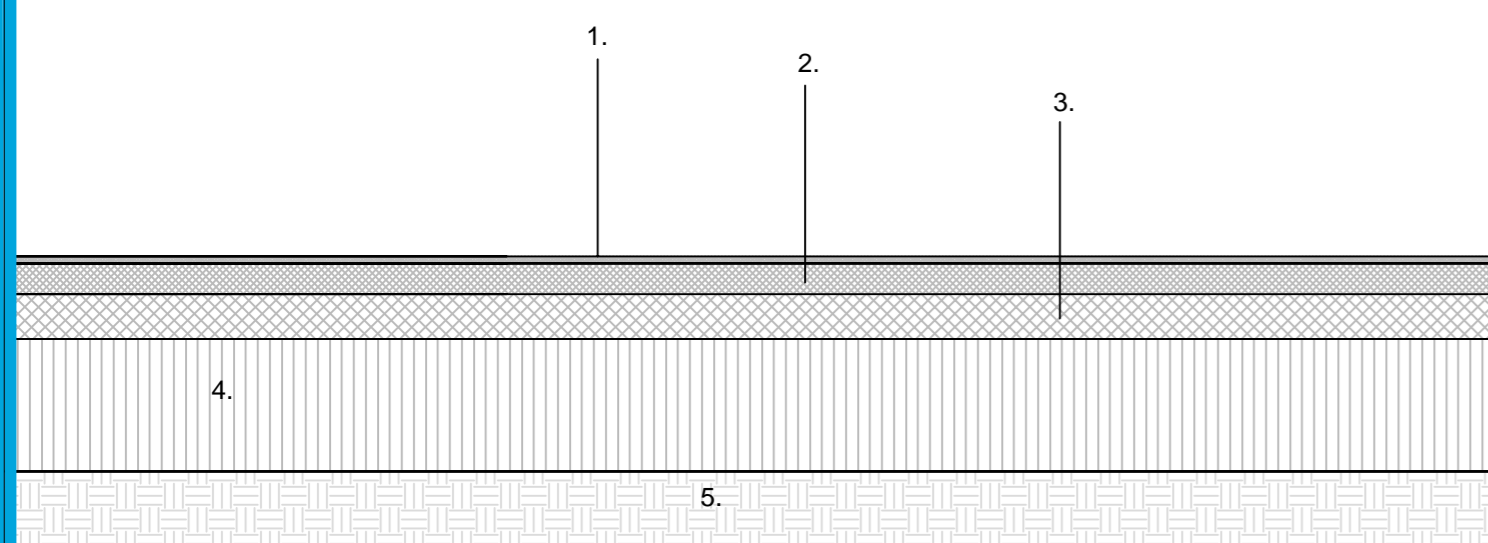
Indicative Detail 011: Perimeter Land Drain



Indicative Detail 012: Lateral Land Drain

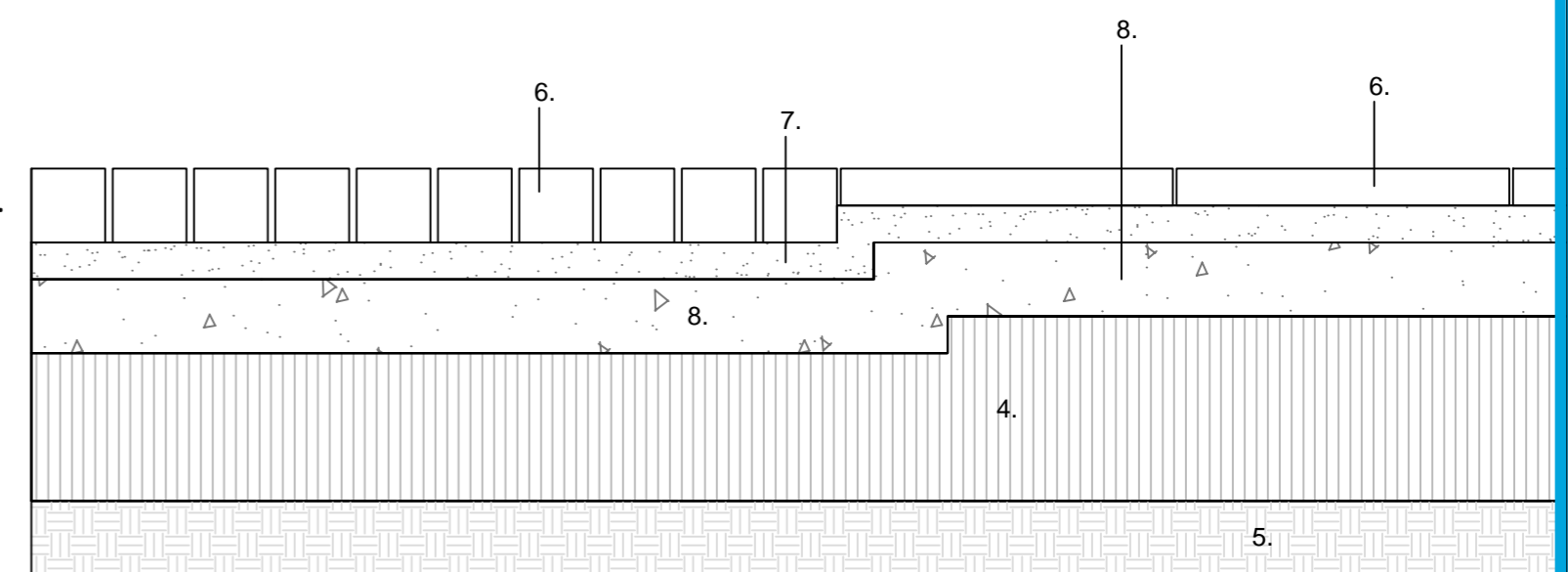
Surfacing

Scale: 1/10

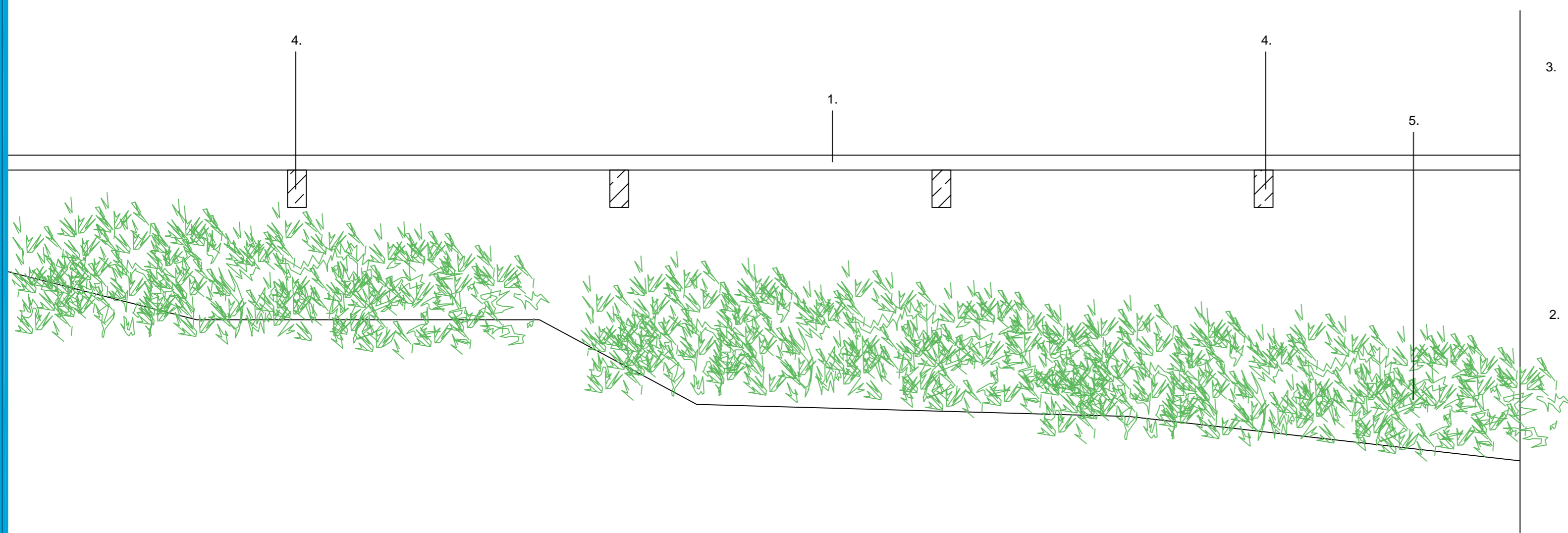


Indicative Detail 013: Vehicular Road

1. Surface dressing/finish as required.
2. Macadam/Asphalt surface course to BS 4987:2005.
3. Macadam binder course to BS 4987:2005.
4. Well compacted and rolled Clause 804 stone.
5. Well compacted & stabilized formation.
6. Setts/slabs with sand blasted finish to surface.
7. Sand/cement dry mix mortar bedding.
8. Concrete base to engineers details

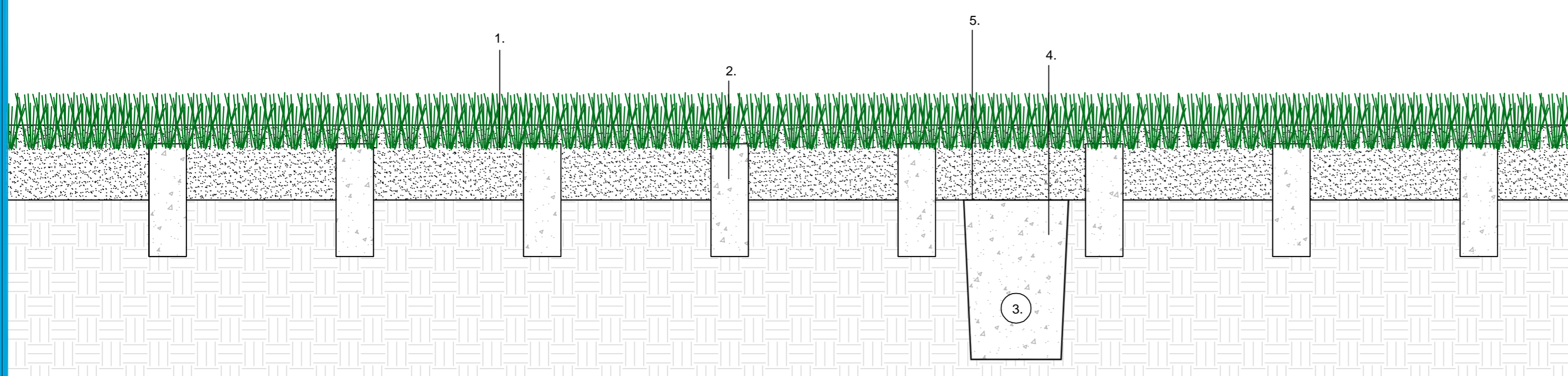


Indicative Detail 014: Paving



Indicative Detail 015: Board Walk

1. Hard wood or composite decking with anti-slip.
2. Supporting strut.
3. Handrail support.
4. Supporting joists
5. Naturalised ground



Indicative Detail 016: Sand Capped Pitch

1. Sand capping to pitch for intensive use.
2. Slit drainage at 1.5m intervals.
3. Perforated pipe - lateral land drain.
4. Clean durable granular fill to comply with IS EN 12620:2002.
5. Geotextile membrane
6. Subsoil material