

TREE PLANTING GENERALLY All tree pits to be approved by Landscape Architect prior to planting. All trees to have a min. 2.00m ht clear stem unless otherwise specified as multi-stemmed or feathered trees, to ensure clear visibility for pedestrians. Trees triple-staked or double-staked & supplied with planting accessories as per BS 5837:2012 + LA's Planting Details. Root barriers to be provided to all trees within 2.00m of underground services, foundations or walls. Trees planted in excavated tree pits, desired pit area approx 4.00m², 1.00m depth. No services routes to be planned through tree-pits. Appropriate Plant Passports required for trees for bio-security measures, trees to be hardened off in Ireland for min. 2x growing seasons.

STREET TREES: To be specified as 2.00m ht clear-stemmed, and of size/girth when planted of minimum height 4.50m, 20-25cm girth. Estimate rootball sizes at 700-1000mm diameter, needing 150m soil either side on plan minimum.

LARGE CANOPY PARKLAND TREES (CARMANHALL ROAD CANOPY CONTINUATION)



Castanea sativa, Fraxinus excelsior, Quercus robur, Quercus petraea, Quercus ilex, Pinus sylvestris, Taxus baccata, Pinus nigra, Sequoiadendron giganteum

CORRIG ROAD



Cedrus libanii, Liriodendron tulipifera, Metasquoia glyptostroboides, Pinus wallichiana, Platanus orientalis, Pterocarya fraxinifolia

MEDIUM SIZED MID CANOPY TREES



Cercidiphum japonicum, Quercus x turneri, Styphnolobium japonicum, Tilia henryana, Sorbus aria 'Majestica'

UNDERSTOREY TREES



Acer platanum, Alnus glutinosa, Gleditsia Triacanthos, Davidia involucreta, Cercis siliquastrum, Osmanthus x burk-woodii, Cornus kousa, Parrotia persica, Prunus serrula, Salix magnifica

NATIVE WOODLAND AREA



Corylus avellana, Crataegus monogyna, Prunus avium, Sorbus aria, Viburnum opulus

HERBACEOUS PLANTING



Agapanthus africanus, Epimedium 'Frohneiten', Geranium 'Rozanne', Liriope muscari, Nepeta racemosa, Thalictrum delavayii, Verbena bonariensis

NATIVE WOODLAND GROUNDCOVER



Anemone nemerosa, Asplenium Scolopendrium, Athyrium filix-femina, Dryopteris filix-mas, Filipendula ulmaria, Luzula sylvatica, Osmunda ragalis, Primula vulgaris

NATIVE WOODLAND GROUNDCOVER



Eulalia Miscanthus sinensis, Luzula sylvatica, Sestera autumnalis

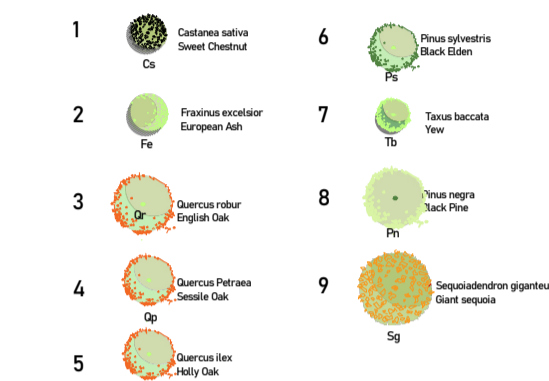
GRASS SEED MIX



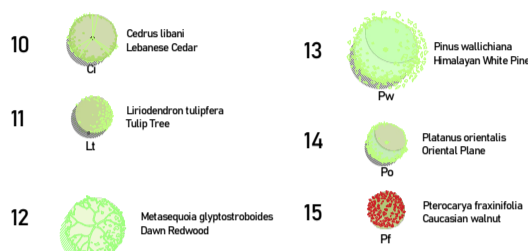
Landscape 'Soft' Materials - Outline Specification Key

Tree Planting Generally: All tree pits to be approved by Landscape Architect prior to planting. All trees to have a min 2.00m height. Clear stem unless otherwise specified as multi-stemmed or feathered trees, to ensure clear visibility for pedestrians. Trees triple-staked or double-staked & supplied with planting accessories as per BS 5837:2012 + Landscape Architect's Planting Details. Root Barriers to be provided to all trees within 2.00m of underground services, foundation or walls. Trees planted in excavated tree pits, desired pit area approx 4.00m², 1.00m depth. No service routes to be planned through tree pits. Appropriate Plant Passports required for trees for bio-security measures, trees to be hardened off in Ireland for min. 2 X growing seasons.

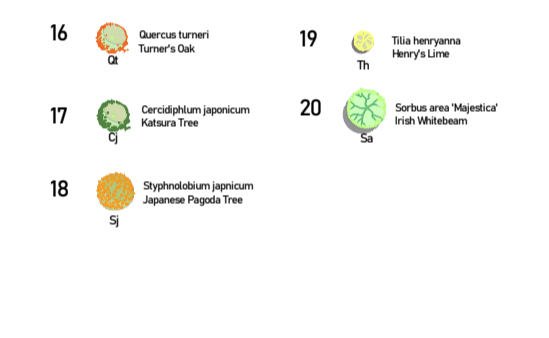
Large Canopy Parkland Trees



Corrig Road



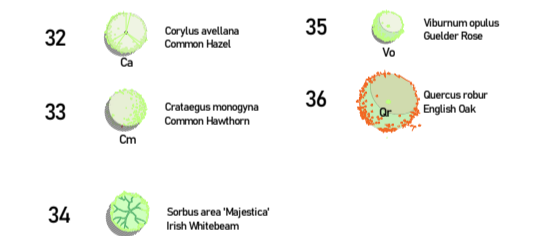
Medium Sized Mid Canopy Trees



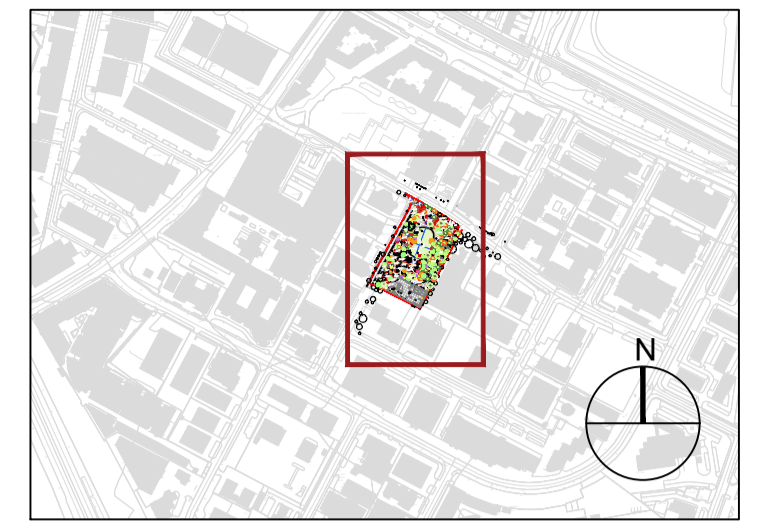
Understorey Tree



Native Woodland Area



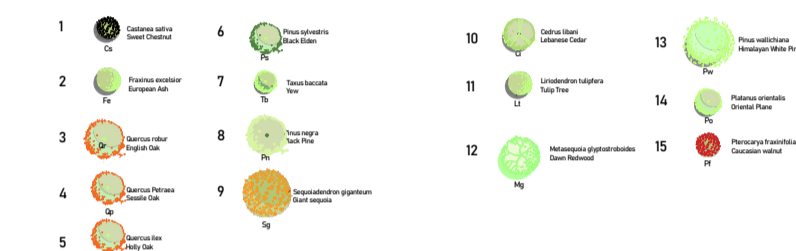
KEY PLAN



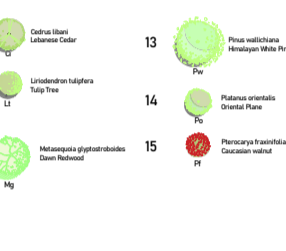
LEGEND

TREE PLANTING GENERALLY: All tree pits to be approved by Landscape Architect prior to planting. All trees to have a min 2.00m height. Clear stem unless otherwise specified as multi-stemmed or feathered trees, to ensure clear visibility for pedestrians. Trees triple-staked or double-staked & supplied with planting accessories as per BS 5837:2012 + Landscape Architect's Planting Details. Root Barriers to be provided to all trees within 2.00m of underground services, foundation or walls. Trees planted in excavated tree pits, desired pit area approx 4.00m², 1.00m depth. No service routes to be planned through tree pits. Appropriate Plant Passports required for trees for bio-security measures, trees to be hardened off in Ireland for min. 2 X growing seasons. All plant stock in grown in Ireland and sourced from Irish nurseries. Street trees must be graded underground.

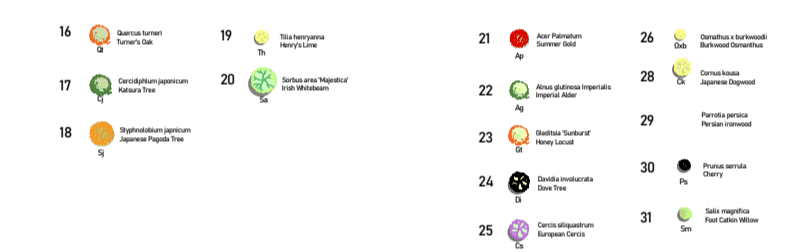
Large Canopy Parkland Trees



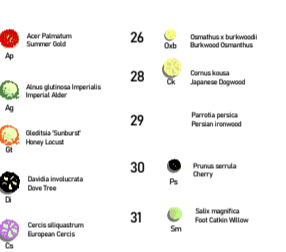
Corrig Road



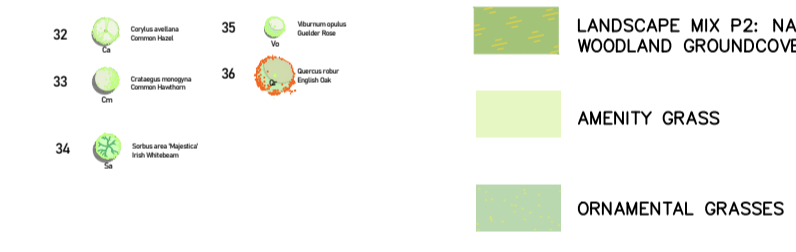
Medium Sized Mid Canopy Trees



Understorey Tree



Native Woodland Area



PLANNING DRAWINGS

Notes :
THIS DRAWING SHALL BE READ IN CONJUNCTION WITH ALL RELEVANT DESIGN TEAM AND SURVEYOR'S DRAWINGS, DETAILS AND SPECIFICATIONS.
ALL DIMENSIONS ARE IN MILLIMETRES. ALL LEVELS IN METRES. USE FIGURED DIMENSIONS ONLY. DO NOT SCALE OFF DRAWINGS.
WHERE DIMENSIONS ARE NOT GIVEN, DRAWINGS MUST NOT BE SCALED AND THE MATTER MUST BE REFERRED TO THE LANDSCAPE ARCHITECT. SIMILARLY IF THE DRAWINGS CONTAIN CONFLICTING DETAILS OR DIMENSIONS.
ALL DIMENSIONS MUST BE CHECKED ON SITE PRIOR TO CONSTRUCTION OR FABRICATION.
THE LANDSCAPE ARCHITECT MUST BE INFORMED, BY THE CONTRACTOR, OF ANY DISCREPANCIES BEFORE WORK PROCEEDS.
THIS DRAWING HAS NOT BEEN PREPARED FOR BCAR, BCMS OR DAC PURPOSES AND HAS NOT BEEN PREPARED TO DEMONSTRATE COMPLIANCE WITH THE BUILDING REGULATIONS.
THIS DRAWING IS COPYRIGHT OF URBAN AGENCY ARCHITECTS.

Revision :	Date :	Description :
c	06.02.2026	
b	09.01.2026	
a	12.12.2025	

Drawing Title : Proposed Softscape Plan			
Drawing No.:	2503-UAA-ZZ-XX-DR-A-PP-0303	Rev.:	B
Date :	06.02.2026	Scale :	1:500@A1
		Drawn by :	RM
		Checked by :	AG
Project Title : Sandford Civic Park			Job No. : 2503

URBAN AGENCY
29-31 Williams St S
Dublin, D02 EF22
Ireland
T:+353 1 672 5907
E:dublin@urban-agency.com

© THIS DRAWING IS COPYRIGHT. DO NOT SCALE. USE FIGURED DIMENSIONS ONLY.

