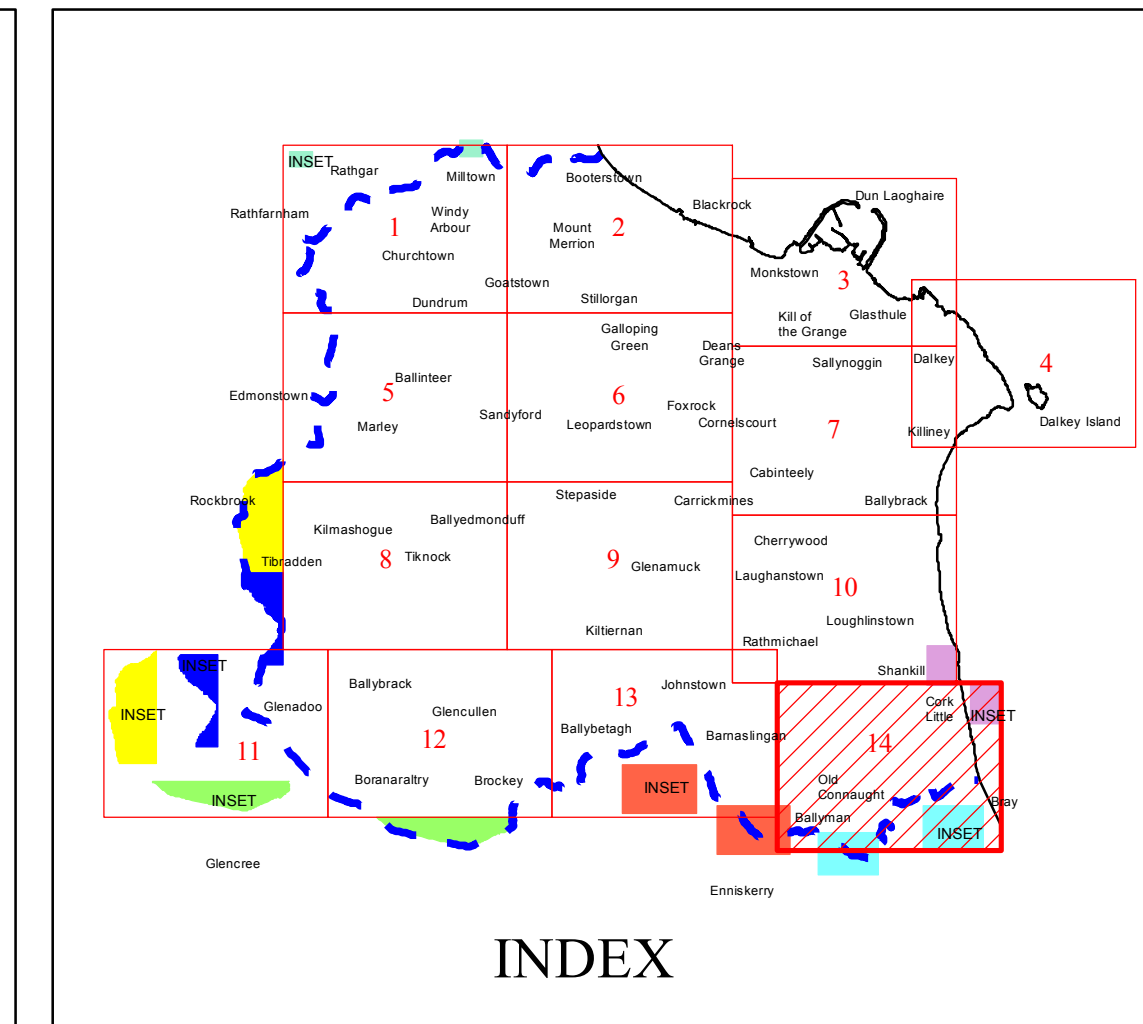


COMHAIRLE CHONTAE DHÚN LAOGHAIRE-RÁTH AN DÚIN

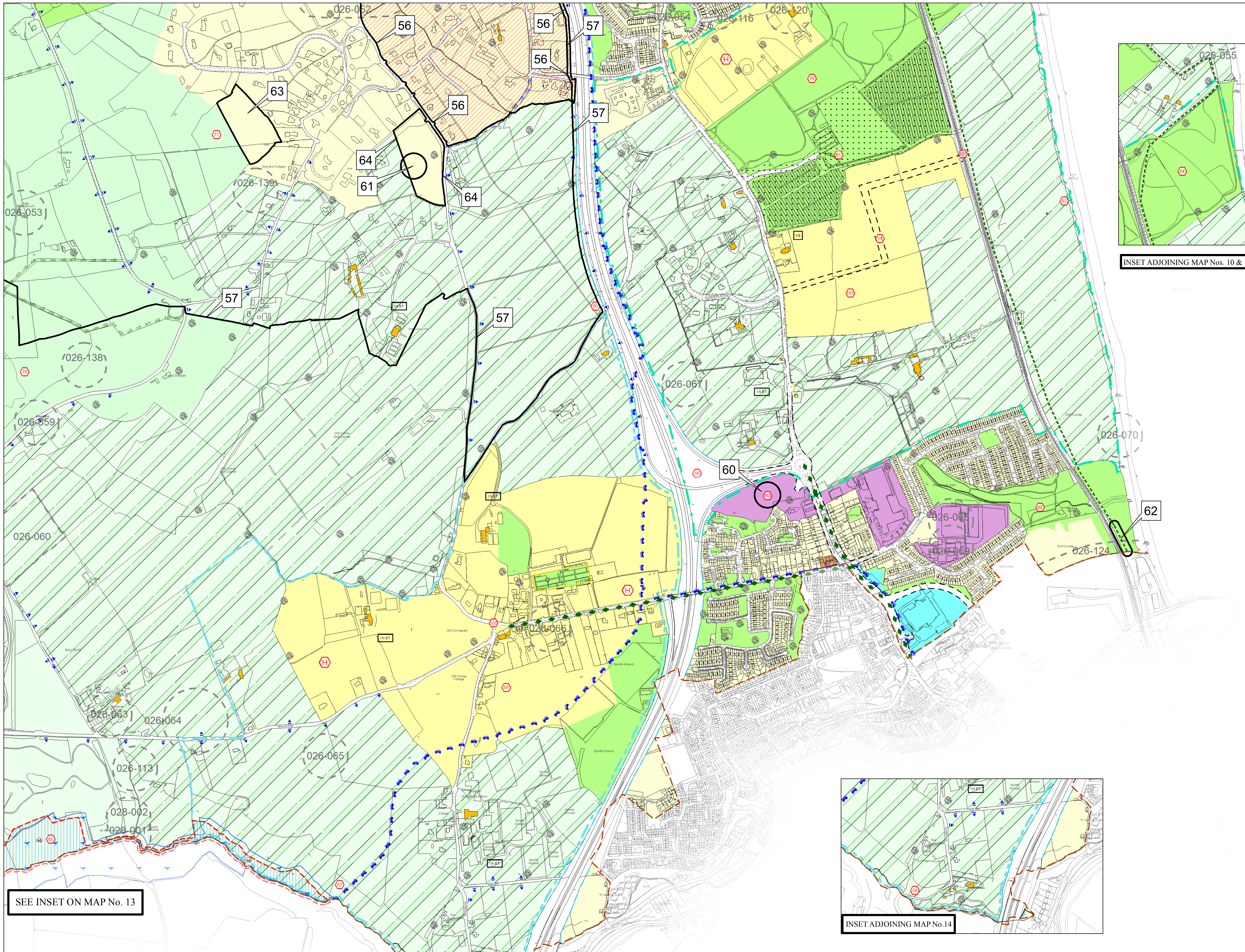
DÚN LAOGHAIRE-RATHDOWN COUNTY COUNCIL

DRAFT COUNTY DEVELOPMENT PLAN 2016-2022

PROPOSED AMENDMENTS NOVEMBER 2015



- #### Amendments Legend
- Indicates amendment to a boundary e.g. use class zoning or objective boundary.
 - Indicates amendment to a line feature, e.g. Road Proposal
 - Indicates amendment to a point feature e.g. Amenity feature, Specific Local Objective etc.
 - Indicates amendment number



- #### USE ZONING OBJECTIVES
- | | | |
|---------------|---|--|
| Objective A | To protect and/or improve residential amenity. | |
| Objective A1 | To provide for new residential communities in accordance with approved local area plans. | |
| Objective A2 | To provide for the creation of sustainable residential neighbourhoods and preserve and protect residential amenity. | |
| Objective B | To protect and improve rural amenity and to provide for the development of agriculture. | |
| Objective DC | To protect, provide for and/or improve mixed-use district centre facilities. | |
| Objective E | To provide for economic development and employment. | |
| Objective F | To preserve and provide for open space with ancillary active recreational amenities. | |
| Objective G | To protect and improve high amenity areas. | |
| Objective GB | To protect and enhance the open nature of lands between urban areas. | |
| Objective LIW | To improve and provide for low density warehousing/light industrial warehousing uses. | |
| Objective MH | To improve, encourage and facilitate the provision and expansion of medical/hospital uses and services. | |
| Objective MIC | To consolidate and complete the development of the mixed use inner core to enhance and reinforce sustainable development. | |
| Objective MOC | To provide for a mix of uses which complements the inner core, but with less retail and residential and more emphasis on employment and services. | |
| Objective MTC | To protect, provide for and/or improve major town centre facilities. | |
| Objective NC | To protect, provide for and/or improve mixed-use neighbourhood centre facilities. | |
| Objective OE | To provide for office and enterprise development. | |
| Objective TL1 | To facilitate, support and enhance the development of third level education institutions. | |
| Objective W | To provide for waterfront development and harbour related uses. | |
- #### OTHER OBJECTIVES
- | | |
|--|--|
| 6 Year Road Proposal | |
| 6 Year Motorway Proposal | |
| Strategic Road Reservation | |
| Long Term Road Proposal | |
| Long Term Motorway Proposal | |
| Proposed Luas Line Extension | |
| Proposed Quality Bus/Bus Priority Route | |
| Public Right-of-Way | |
| Recreation Access Route | |
| Wicklow Way | |
| Proposed Sutton to Sandycove Walkway Cycleway as a component part of the National East Coast Trail Cycle Route | |
| Protected Structures | |
| Record of Monuments and Places (For Areas of Archaeological Potential) | |
| Architectural Conservation Area | |
| Candidate Architectural Conservation Area | |
| "The Metals" Candidate Architectural Conservation Area | |
| Natura 2000 (SPA and cSAC Areas) | |
| Proposed Natural Heritage Areas | |
| To preserve Views | |
| To preserve Prospects | |
| To protect and preserve Trees and Woodlands | |
| No increase in the number of buildings permissible | |
| To protect and/or provide for a Burial Ground | |
| Boundary of Adopted Cherrywood Planning Scheme | |
| Boundary of Urban Framework Plan | |
| Boundary of lands for which a Local Area Plan will be prepared | |
| Boundary of Local Area Plan | |
| Boundary of Objective Area | |
| Specific Local Objective | |
| To provide accommodation for the Travelling Community | |
| County Council Housing Programme Site | |
| To provide for a Primary School | |
| To provide for a Post Primary School or other Institution | |
| To protect and/or provide for Institutional Use in open lands | |
| Mews Development Acceptable in Principle | |
| County Boundary | |
- Note:
1. The lines of the Road Proposals shown are diagrammatic only and may be subject to change.
2. The provisional alignment of the S28/National East Coast Trail Cycle Route is diagrammatic only and may be subject to change.
3. The boundaries of any proposed Local Area Plans are indicative only and may be subject to change.
- 0 50 100 200 300 400 500 Metres
- Director of Services: M Henchy Senior Planner: D Irvine

List of Amendments

- 56 Add cACA for Rathmichael Area
- 57 Remove Boundary of SLO 126
- 60 Add SLO 163
- 61 Remove SLO 126
- 62 Extend Cycleway Proposal
- 63 Change use class zoning from "G" to "A"
- 64 Change use class zoning from "GB" to "A"