

COMHAIRLE CHONTAE DHÚN LAOGHAIRE-RÁTH AN DÚIN
DÚN LAOGHAIRE - RATHDOWN COUNTY COUNCIL
COUNTY DEVELOPMENT PLAN 2022-2028
Draft County Development Plan - January 2021
Supplementary Mapping Booklet

- Existing Bus Priority Routes
- Proposed Bus Priority Routes
- Cherrywood Planning Scheme
(Refer to the Cherrywood Planning Scheme for objectives within its boundary)
- County Boundary



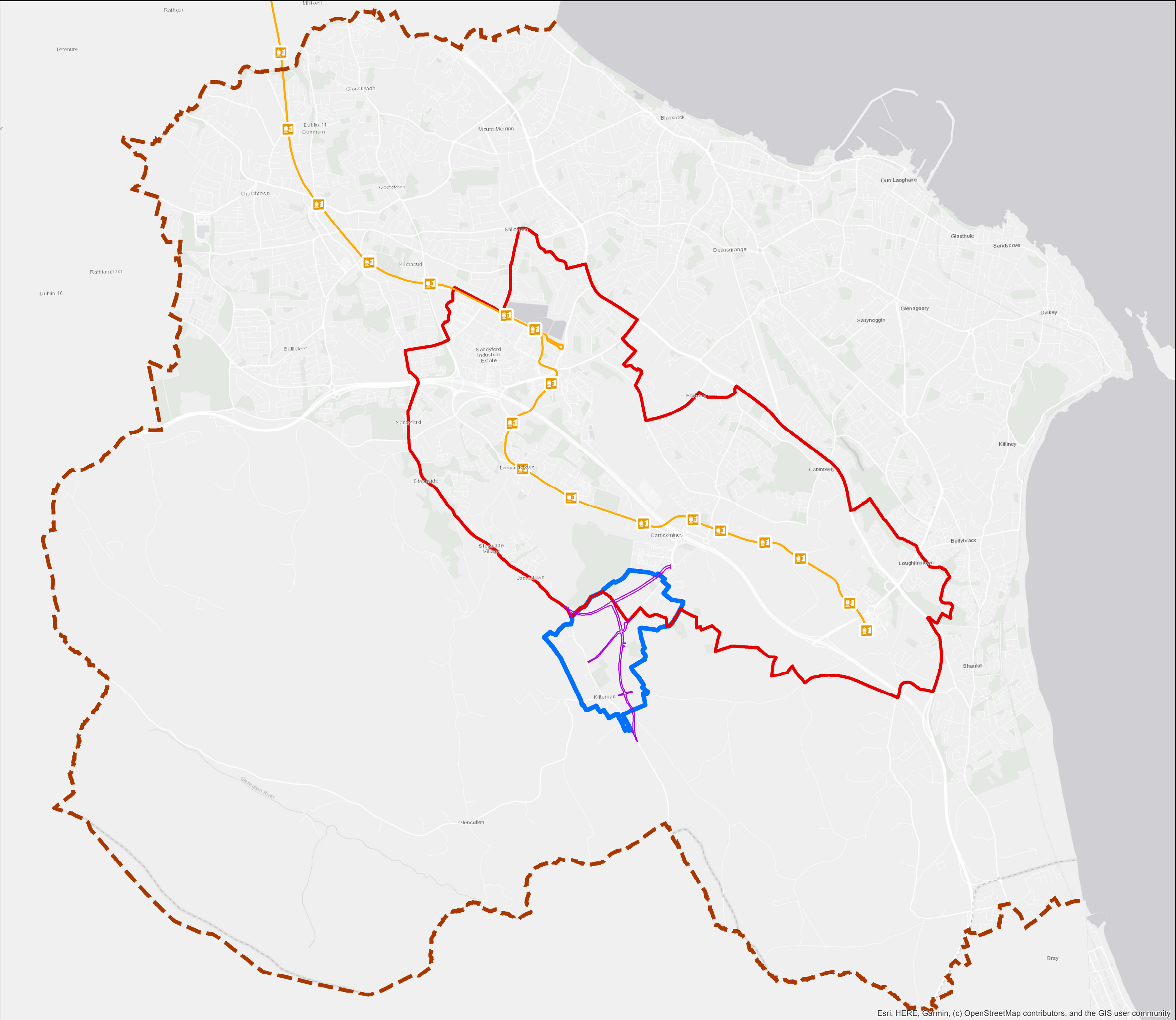
Planning Department







M Henchy
Director of Planning



Bus Priority Network

Senior Planner:	L. McGauran	Chief Technician:	
Prepared By:	L. McGauran	Drawn By:	M.Hennessy
Date:	December 2020	Scale:	1:36,000
		Map No.	T1



-  Boundary of Section 49 Supplementary Development Contribution Scheme Glenamuck Road
-  Boundary of Section 49 Supplementary Development Contribution Scheme Luas B1
-  Luas Line
-  Luas Stations
-  Kiltiernan / Glenamuck Distributor Road
-  County Boundary



Planning Department

M Henchy
Director of Planning



Section 49 Supplementary Development Contribution Scheme

Senior Planner:	L. McGauran	Chief Technician:	
Prepared By:	L. McGauran	Drawn By:	M.Hennessy
Date:	December 2020	Scale:	1:36,000
		Map No.	T3