

KEY:

Emerg. Rd / Site Road	Stewards Fence	Heras Fence	Stage Sighting
Toilet Block	Concession	First Aid Post	CCTV Camera
Emergency Exit Route	Drinking Water	Fire Hydrant	Water Pipe
Pedestrian Route	Floodlights (Indicative)	Festoon LT Walkway	Route and Park Exit
Trackway Panels Are 3m Wide And Are Suitable For Carrying a 16.25 Tonne Fire Appliance.		Water	Entrance Route

— SITE BOUNDARY

Access to and from the coffee shop will be via the Walled Nursery Garden via the Grange Road.

KEY CONTACTS

Deputy Event Control - Ange Goliger Tel: 086 0295820
Event Safety Coordinator - Ian Donaldson
Tel: +44 (0) 7900 928 769
Fire Safety Officer - David Slattery Tel: 087 9437787
Fire Safety Officer - Adrian Sutton Tel: 086 3940225

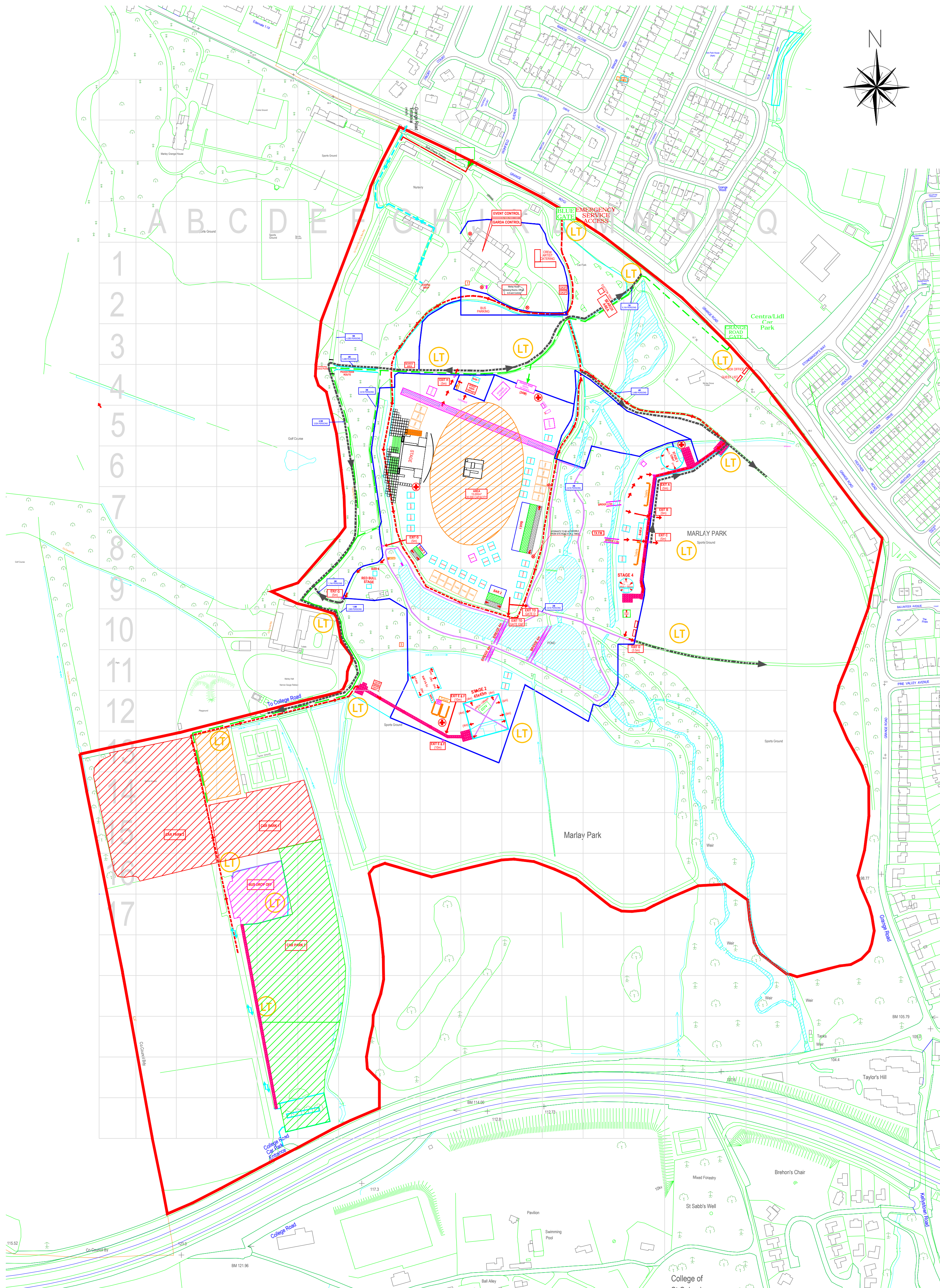
DRAFT

SCALE 1:1500 (@ A1)
DRAWING BY
RICHARD WHITE
FOR
MELVIN BENN AND FESTIVAL REPUBLIC

CONTACT: MELVIN BENN
THE FESTIVAL OFFICE
BORD GAIS ENERGY THEATRE
GRAND CANAL SQUARE
DOCKLANDS, DUBLIN 2

TEL (01) 6742476
GRIDLINES 50M x 50M

REV.	DESCRIPTION	DATE
1	ISSUED FOR TENDERS	21.03.2016
2	REVISED TO REFLECT COMMENTS	21.03.2016
3	REVISED TO REFLECT COMMENTS	21.03.2016
4	REVISED TO REFLECT COMMENTS	21.03.2016
5	REVISED TO REFLECT COMMENTS	21.03.2016
6	REVISED TO REFLECT COMMENTS	21.03.2016
7	REVISED TO REFLECT COMMENTS	21.03.2016
8	REVISED TO REFLECT COMMENTS	21.03.2016
9	REVISED TO REFLECT COMMENTS	21.03.2016
10	REVISED TO REFLECT COMMENTS	21.03.2016
11	REVISED TO REFLECT COMMENTS	21.03.2016
12	REVISED TO REFLECT COMMENTS	21.03.2016
13	REVISED TO REFLECT COMMENTS	21.03.2016
14	REVISED TO REFLECT COMMENTS	21.03.2016
15	REVISED TO REFLECT COMMENTS	21.03.2016
16	REVISED TO REFLECT COMMENTS	21.03.2016
17	REVISED TO REFLECT COMMENTS	21.03.2016
18	REVISED TO REFLECT COMMENTS	21.03.2016
19	REVISED TO REFLECT COMMENTS	21.03.2016
20	REVISED TO REFLECT COMMENTS	21.03.2016
21	REVISED TO REFLECT COMMENTS	21.03.2016
22	REVISED TO REFLECT COMMENTS	21.03.2016
23	REVISED TO REFLECT COMMENTS	21.03.2016
24	REVISED TO REFLECT COMMENTS	21.03.2016
25	REVISED TO REFLECT COMMENTS	21.03.2016
26	REVISED TO REFLECT COMMENTS	21.03.2016
27	REVISED TO REFLECT COMMENTS	21.03.2016
28	REVISED TO REFLECT COMMENTS	21.03.2016
29	REVISED TO REFLECT COMMENTS	21.03.2016
30	REVISED TO REFLECT COMMENTS	21.03.2016
31	REVISED TO REFLECT COMMENTS	21.03.2016
32	REVISED TO REFLECT COMMENTS	21.03.2016
33	REVISED TO REFLECT COMMENTS	21.03.2016
34	REVISED TO REFLECT COMMENTS	21.03.2016
35	REVISED TO REFLECT COMMENTS	21.03.2016
36	REVISED TO REFLECT COMMENTS	21.03.2016
37	REVISED TO REFLECT COMMENTS	21.03.2016
38	REVISED TO REFLECT COMMENTS	21.03.2016
39	REVISED TO REFLECT COMMENTS	21.03.2016
40	REVISED TO REFLECT COMMENTS	21.03.2016
41	REVISED TO REFLECT COMMENTS	21.03.2016
42	REVISED TO REFLECT COMMENTS	21.03.2016
43	REVISED TO REFLECT COMMENTS	21.03.2016
44	REVISED TO REFLECT COMMENTS	21.03.2016
45	REVISED TO REFLECT COMMENTS	21.03.2016
46	REVISED TO REFLECT COMMENTS	21.03.2016
47	REVISED TO REFLECT COMMENTS	21.03.2016
48	REVISED TO REFLECT COMMENTS	21.03.2016
49	REVISED TO REFLECT COMMENTS	21.03.2016
50	REVISED TO REFLECT COMMENTS	21.03.2016
51	REVISED TO REFLECT COMMENTS	21.03.2016
52	REVISED TO REFLECT COMMENTS	21.03.2016
53	REVISED TO REFLECT COMMENTS	21.03.2016
54	REVISED TO REFLECT COMMENTS	21.03.2016
55	REVISED TO REFLECT COMMENTS	21.03.2016
56	REVISED TO REFLECT COMMENTS	21.03.2016
57	REVISED TO REFLECT COMMENTS	21.03.2016
58	REVISED TO REFLECT COMMENTS	21.03.2016
59	REVISED TO REFLECT COMMENTS	21.03.2016
60	REVISED TO REFLECT COMMENTS	21.03.2016
61	REVISED TO REFLECT COMMENTS	21.03.2016
62	REVISED TO REFLECT COMMENTS	21.03.2016
63	REVISED TO REFLECT COMMENTS	21.03.2016
64	REVISED TO REFLECT COMMENTS	21.03.2016
65	REVISED TO REFLECT COMMENTS	21.03.2016
66	REVISED TO REFLECT COMMENTS	21.03.2016
67	REVISED TO REFLECT COMMENTS	21.03.2016
68	REVISED TO REFLECT COMMENTS	21.03.2016
69	REVISED TO REFLECT COMMENTS	21.03.2016
70	REVISED TO REFLECT COMMENTS	21.03.2016
71	REVISED TO REFLECT COMMENTS	21.03.2016
72	REVISED TO REFLECT COMMENTS	21.03.2016
73	REVISED TO REFLECT COMMENTS	21.03.2016
74	REVISED TO REFLECT COMMENTS	21.03.2016
75	REVISED TO REFLECT COMMENTS	21.03.2016
76	REVISED TO REFLECT COMMENTS	21.03.2016
77	REVISED TO REFLECT COMMENTS	21.03.2016
78	REVISED TO REFLECT COMMENTS	21.03.2016
79	REVISED TO REFLECT COMMENTS	21.03.2016
80	REVISED TO REFLECT COMMENTS	21.03.2016
81	REVISED TO REFLECT COMMENTS	21.03.2016
82	REVISED TO REFLECT COMMENTS	21.03.2016
83	REVISED TO REFLECT COMMENTS	21.03.2016
84	REVISED TO REFLECT COMMENTS	21.03.2016
85	REVISED TO REFLECT COMMENTS	21.03.2016
86	REVISED TO REFLECT COMMENTS	21.03.2016
87	REVISED TO REFLECT COMMENTS	21.03.2016
88	REVISED TO REFLECT COMMENTS	21.03.2016
89	REVISED TO REFLECT COMMENTS	21.03.2016
90	REVISED TO REFLECT COMMENTS	21.03.2016
91	REVISED TO REFLECT COMMENTS	21.03.2016
92	REVISED TO REFLECT COMMENTS	21.03.2016
93	REVISED TO REFLECT COMMENTS	21.03.2016
94	REVISED TO REFLECT COMMENTS	21.03.2016
95	REVISED TO REFLECT COMMENTS	21.03.2016
96	REVISED TO REFLECT COMMENTS	21.03.2016
97	REVISED TO REFLECT COMMENTS	21.03.2016
98	REVISED TO REFLECT COMMENTS	21.03.2016
99	REVISED TO REFLECT COMMENTS	21.03.2016
100	REVISED TO REFLECT COMMENTS	21.03.2016



KEY:

Emerg. Rt / Site Road	Steelshield Fence	Heras Fence	Stage Sighline
Toilet Block	Concession	First Aid Post	CCTV Camera
Emergency Exit Route	Drinking Water	Fire Hydrant	Water Pipe
Pedestrian Route	Floodlights (Indicative)	Festoon Lit Walkway	Route and Park Exit
Trackway Panels Are 3m Wide And Are Suitable For Carrying a 16.25 Tonne Fire Appliance.		Water	Entrance Route

- SITE BOUNDARY
- Access to and from the coffee shop will be via the Walled Nursery Garden via the Grange Road.

DRAFT

KEY CONTACTS

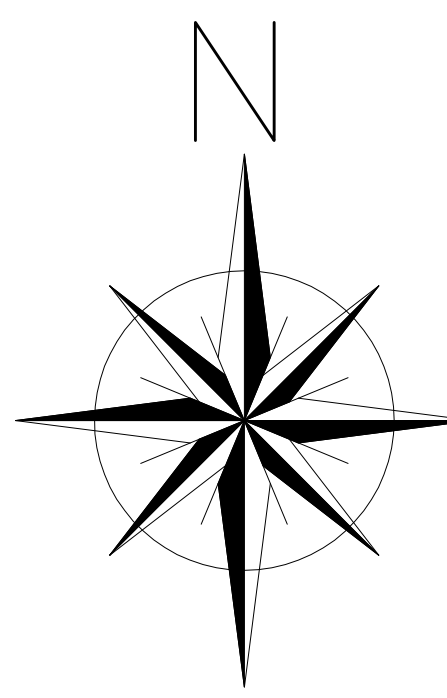
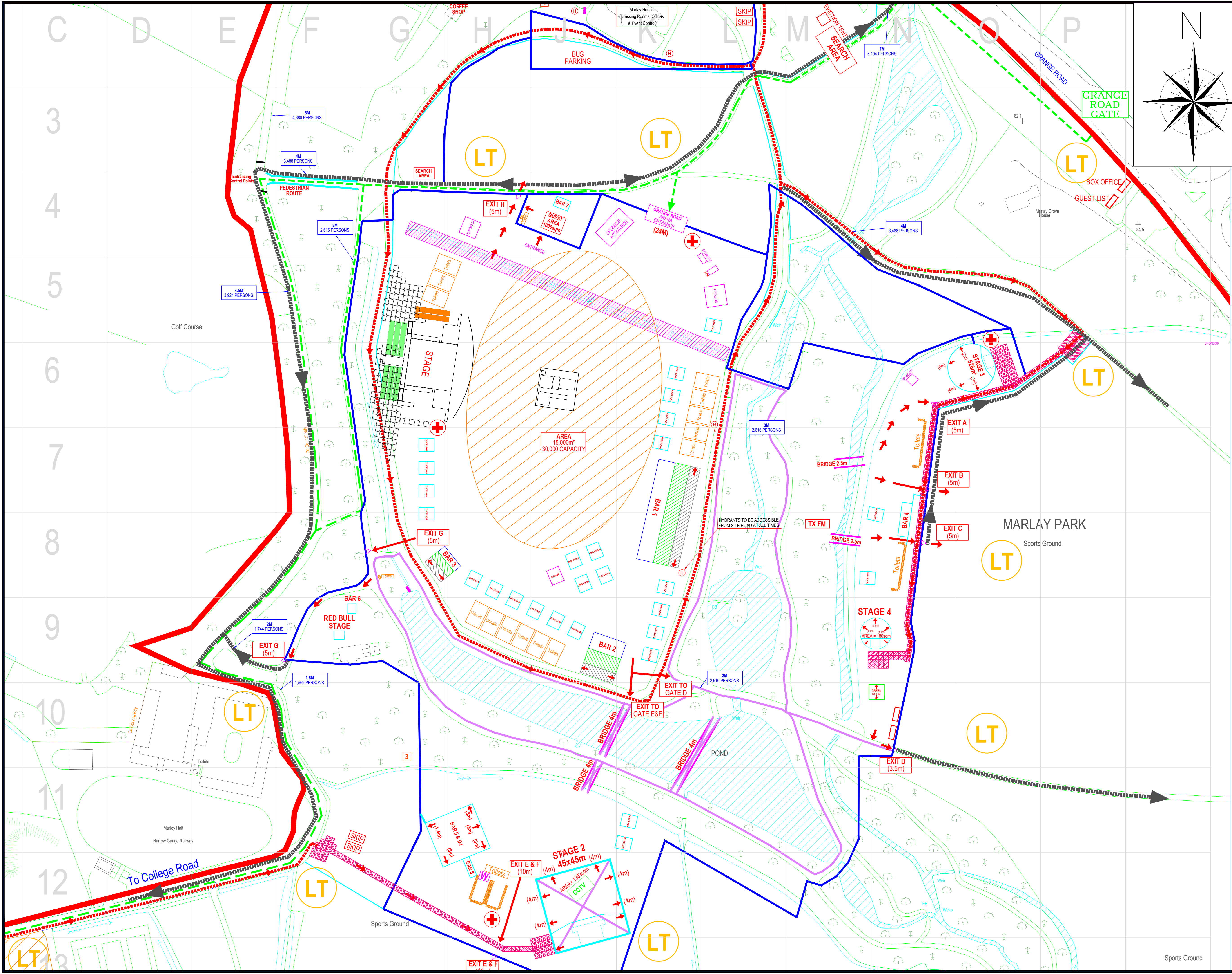
Deputy Event Control - Ange Goliger Tel: 086 0295820
Event Safety Coordinator - Ian Donaldson
Tel: +44 (0) 7900 928 769
Fire Safety Officer - David Slattery Tel: 087 9437787
Fire Safety Officer - Adrian Sutton Tel: 086 3940225

SCALE 1:2500 (@ A1)
DRAWING BY
RICHARD WHITE
FOR
MELVIN BENN AND FESTIVAL REPUBLIC

CONTACT: MELVIN BENN
THE FESTIVAL OFFICE
BORD GAIS ENERGY THEATRE
GRAND CANAL SQUARE
DOCKLANDS, DUBLIN 2

TEL (01) 6742476
GRIDLINES 50M X 50M

REV	DESCRIPTION	DATE
Michael Slattery Associates Fire Safety Engineers		
Dublin / Belfast / Leeds		
www.msa.ie		
19 Windsor Place Lower Pembroke Place Dublin 2, Ireland Tel: +353(1)6765713 Fax: +353(1)6785247		
PROJECT LONGITUDE 2016 MARLAY PARK		
TITLE SITE LOCATION		
SCALE 1:2500 @ A1	JOB NO 16026	
DATE 21.03.2016	DWG NO 16026-02	
CHECKED BY	REV	



KEY:

Emerg Rt / Site Road	Steelshield Fence	Hence Fence	Stage Signline
Toilet Block	Concession	First Aid Post	CCTV Camera
Emergency Exit Route	Drinking Water	Fire Hydrant	Water Pipe
Pedestrian Route	Floodlights (Indicative)	Festoon LT Walkway	Route and Park Exit
Trackway Panels Are 3m Wide And Are Suitable For Carrying a 16.25 Tonne Fire Appliance.		Water	Entrance Route

SITE BOUNDARY
Access to and from the coffee shop will be via the Walled Nursery Garden via the Grange Road.

KEY CONTACTS
Deputy Event Control - Ange Goliger Tel: 086 0295820
Event Safety Coordinator - Ian Donaldson Tel: +44 (0) 7900 928 769
Fire Safety Officer - David Slattery Tel: 087 9437787
Fire Safety Officer - Adrian Sutton Tel: 086 3940225

DRAFT

SCALE 1:1000 (@ A1)
DRAWING BY
RICHARD WHITE
FOR
MELVIN BENN AND FESTIVAL REPUBLIC
CONTACT: MELVIN BENN
THE FESTIVAL OFFICE
BORD GAIS ENERGY THEATRE
GRAND CANAL SQUARE
DOCKLANDS, DUBLIN 2
TEL (01) 6742476
GRIDLINES 50M x 50M

REV.	DESCRIPTION	DATE
1	ISSUED FOR PERMITTING	21.03.2016
2	ISSUED FOR CONSTRUCTION	21.03.2016
3	ISSUED FOR EVENT	21.03.2016

MSA
Michael Slattery Associates
Fire Safety Engineers
129 Windsor Place
Lower Pembroke Place
Dublin 2, Ireland
Tel: +353(1)6765713
Fax: +353(1)6765747
Email: info@msa.ie
Website: www.msa.ie
Building Design & Construction
Fire Engineering
Event Safety & Management
Building Fire Safety Management
Disabled Access Consultancy
Computer Modelling

TITLE	ARENA
SCALE	1:1000 @ A1
DATE	21.03.2016
CHECKED BY	Rev
JOB NO	16026
DATE	16026-05