

2017



RAINBOW RUN & HOLI NIGHT
PARTY
Draft Event Management Plan as of
June 14th

INDEX

PART 1 : INTRODUCTION & GENERAL ARRANGEMENTS **Page 5**

- 1.1 Introduction to Event Management plan
- 1.2 Event Description & Audience Profile
- 1.3 Event Timings
- 1.4 Promoters Details
- 1.5 Ticket Sales & Distribution
- 1.6 Event Planning process
- 1.7 Post Event Debrief
- 1.8 Drawings

PART 2 : EVENT MANAGEMENT & SAFETY STRATEGY **Page 8**

- 2.1 Event Management, Safety & Operational Staff
- 2.2 Roles & Responsibilities of team
- 2.3 Organisational Chart – operational
- 2.4 Objectives, Risk Assessments, Codes of Practice

PART 3: EVENT SAFETY MEASURES **Page 13**

- 3.1 Venue Occupant Capacity
- 3.2 Venue Entrance Capacity
- 3.3 Venue Exit capacity
- 3.4 Fire fighting equipment
- 3.5 Flammable substances, combustible waste & furnishings
- 3.6 Pyrotechnics
- 3.7 Smoking
- 3.8 Crowd Control Barriers
- 3.9 Temporary Barriers & Fencing
- 3.10 Staging & other temporary structures
- 3.11 Erection of temporary structures
- 3.12 Certification of temporary structures
- 3.13 Wind management of temporary structures

- 3.14 Concession units
- 3.15 Bar facilities
- 3.16 Electrical & lighting installations
- 3.17 Vehicle movement
- 3.18 Emergency Exit & Emergency Access routes
- 3.19 Lighting Of site & egress route
- 3.20 Water safety

PART 4: HEALTH, SAFETY & WELFARE ARRANGEMENTS

Page 23

- 4.1 Toilet Facilities & requirements
- 4.2 Additional toilet requirements
- 4.3 Drinking water facilities
- 4.4 Lost children & Child protection policy
- 4.5 Lost property
- 4.6 Information point & stewards

PART 5: ENVIRONMENTAL PROTECTION

Page 26

- 5.1 Litter & clean up programme
- 5.2 Water courses
- 5.3 Sound levels
- 5.4 Removal of temporary structures
- 5.5 Environmental impact monitoring

PART 6: COMMAND, CONTROL & COMMUNICATIONS

Page 28

- 6.1 Event Control
- 6.2 Communications
- 6.3 CCTV
- 6.4 Public address
- 6.5 Loudhailers
- 6.6 Announcements
- 6.7 Meetings

PART 7: MEDICAL FACILITIES

Page 29

- 7.1 Provision
- 7.2 Medical plan
- 7.3 Event Medical Officer
- 7.4 Event medical co-ordinator
- 7.5 Voluntary organisation
- 7.7 Facilities

PART 8: CROWD MANAGEMENT & SECURITY

Page 33

- 8.1 Crowd management
- 8.2 Provision & training of security
- 8.3 Duties of security
- 8.4 Fire stewards
- 8.5 Identification & registration of security
- 8.6 Briefing of security
- 8.7 Security zones & allocation
- 8.8 Incident reporting

PART 9: EMERGENCY PLANS & PROCEDURES

Page 36

- 9.1 Emergency plans & procedures
- 9.2 Key personnel
- 9.3 Activation of the Major Emergency Plan
- 9.4 Transfer of responsibility to an Emergency Controller
- 9.5 Action in the event of a Major Emergency

PART 10: TRAFFIC MANAGEMENT PLAN

Page 40

- 10.1 Consultation
- 10.2 Media coverage
- 10.3 Ticket sales geographical location
- 10.4 Car parking

- 10.5 Drop off & Pick up facilities.
- 10.6 Signage
- 10.7 Disabled Parking
- 10.8 Traffic options

APPENDICES

- APP 1 Contact Details
- App 2 Venue Regulations
- App 3 Licence Compliance
- App 4 Duties of security
- App 5` Emergency procedures
 - In the event of fire
 - In the event of a bomb warning
 - In the event of extreme weather
 - In the event of crowd disturbances
 - Show stop procedures
 - Evacuation procedures
- App 6 Child Protection Policy
- App 7 Lost child procedures
- App 6. Event Specific Risk Assessment –

PART 1: INTRODUCTION & GENERAL ARRANGEMENTS

1.1 INTRODUCTION TO EVENT MANAGEMENT PLAN

Frisky Promotions Ltd are proposing to hold the Rainbow Run & Holi Night Party Festival 2017 on Sept 16th 2017.

This Event Management Plan is produced by Safents Consulting Ltd (safentsconsulting@gmail.com 083 129 3662) and forms part of the Event Licence application to Dun Laoghaire Rathdown County Council under the Planning & Development Regs 2000(as amended). It includes the following elements:

- Event Management systems & responsibilities
- Safety Strategy statement
- Risk Assessments
- Traffic Management
- Environmental Protection Plan
- Emergency Plans
- Medical arrangements & facilities
- Site drawings

This plan will describe the various arrangements for the Festival to ensure its safe and successful execution. It has been prepared in accordance with the relevant Codes of Practice and includes arrangements for health and safety management, risk assessment & emergency planning. It outlines the roles and responsibilities of the organisers and their commitment to providing an event where the health, safety and welfare of the public and the staff are paramount.

Hazard identification & risk assessment provide the basis for this safety plan. The event specific risk assessment is provided in the Appendices. Risk assessment is a continuous process and as such the risk assessment will be updated regularly.

1.2. EVENT DESCRIPTION

The Rainbow Run is a fun run of approx 5k that includes an element where the participants throw coloured powder over themselves and each other.

This run has taken place 5 times before and has previously run from the West pier to the ferry terminal and back to the West Pier. This year the run will start in the Ferry terminal and proceed along the lower level to West Pier and then back along the higher level to the Ferry terminal. The runners will be released in waves and the run element will take approximately 5 hours with music and traders stalls in the outside area of terminal. There will be a gantry structure for the start of the race and colour powder will be thrown at regular intervals. There will be a tribute bands and 98fm and 103.8fm DJs playing from the stage

In the evening there will be a Holi party with a stage, musical performances and licensed bars and also coloured powder. This will be an 18s and over event. Between the two parts, Run participants with evening tickets will be able to stay in the Beer Garden area, where they can enjoy a drink and something to eat

At 6.30pm the doors will open for the evenings entertainment – Holi Night Party The artistes will be nostalgia acts from the 90s and 00s, cover bands and commercial live acts and DJs

The audience profile for the Run is expected to be families with children, general runners and a high proportion of young females 16 – 30 .

The audience profile for the Holi Night Party is expected to be 40:60 male: female and mainly aged between 18 and 30

An occasional licence will be applied for , from 5pm onward when the Beer Garden area will open to adult runners with an evening ticket

There will be one bar area serving beer, cider, wine, and cocktails

1.3 EVENT TIMINGS & DETAILS

- 12 noon Gates open for registration
- 1pm Event begins
- 2pm Run begins
- 5pm Rainbow Run finishes,
Beer Garden opens for adult evening ticket holders
Main area of site reset for evening
- 6.30pm Doors open Holi Night Party
- 10.30pm Music finishes
- 23.00 Site closes

Firstly runners will get their 'number plates' from the Terminal Building foyer. Then patrons will enter the venue in the first instance on the Terminal side using gate K. They will proceed to the Marina side of the venue to partake in the stage activities and visit the expos and traders. The licensed bar facilities will not be open at this time.

Once all the runners have entered then the terminal side of the venue will be closed. Runners will be called to the starting position in 'waves' of 700-1000. The MC will start each wave off and then call the next one forward. Whilst this is happening there will be musical entertainment from the stage and regular sessions of powder throwing. Compressed air will also send coloured powder over the runners as they wait in the starting position.

Runners will progress along the route as shown in the plan. There will be various musical points along the way where different genres of music will be played from speakers along with cheer leaders to encourage the runners along the way.

Harbour Rd will be closed for the main duration of the run as runners will be running in both directions along it. The emergency route will be reversed and will enter and leave the site via the Marine Rd roundabout

When runners return from the race they will enter the Marina side of the venue through Gate G. The Terminal side of the venue will remain closed. Entertainment will be provided from the stage until 5pm.

At 5pm the rainbow Run part of the event will finish and patrons will exit via gates C ,D and G. Adult runners who have purchased tickets for the Holi Party can exchange their tickets for evening wristbands at a ticket booth located in the venue. This will entitle them to enter the Beer Garden area where the licensed bar will open and a DJ will play background music. Patrons may remain there whilst the remainder of the venue is reset for the evening entertainment. The Beer Garden will be barriered off from the rest of the venue, allowing for emergency exits both sides.

At 6.30pm the gates will open for the Holi Night Party and patrons will enter via Gate . The barriers will be removed from the Beer Garden area and patrons will be able to free flow on both sides of the venue.

Entertainment will run until 10.30 when the event will finish and the site will be clear by 11pm. Evening patrons will exit via Gate G

1.4 PROMOTER DETAILS

Promoters: Frisky Promotions Ltd

8 Dunville Terrace, Canal Rd, Ranelagh, Dublin 6

Brian Mcdermott

brian@eventfuel.ie

086 3177 824

Frisky Promotions/Event Fuel have promoted and organised the Rainbow Run for the last 5 years and are experienced promoters and event organisers – see www.eventfuel.ie

1.5 TICKET SALES & DISTRIBUTION

- Tickets will be sold and distributed throughout Ireland and abroad both through ticket outlets and over the internet & telephone through Eventbrite.ie
- Children under 15 must be accompanied on the Run and the evening is 18s and over only

1.6 EVENT PLANNING PROCESS

There will be a number of meetings with the emergency services & prescribed bodies to facilitate the event planning process. A pre submission consultation meeting took place with the various stakeholders on May 25th. A Pre-event planning meeting will be held in the week before the event.

1.7 POST EVENT DEBRIEF

There will be a post-event Debrief held within 2 weeks of the event or at a later time as agreed at the Pre Planning meeting held the week of the event.

1.8 DRAWINGS

The following site drawing are attached separately to this plan

Site location drawing – Rainbow Run – Ferry terminal & Rainbow Run

Site layout drawing – Rainbow Run – 12 noon to 5pm

Site layout drawing – Mid section 5pm – 6.30pm

Site layout drawing – Holi Night Party 6.30pm – 10.30pm

PART 2 : EVENT MANAGEMENT & SAFETY STRATEGY

2.1` EVENT MANAGEMENT, SAFETY & OPERATIONAL STAFF

The promoter will appoint competent staff to manage the event safely & responsibly:

Event & Safety Management Team

- | | |
|------------------------|-------------------------------|
| • Event Controller: | Brian McDermott |
| • Dep Event Controller | Jamie Deasey |
| • Safety Officer | Sophie Ridley |
| • Event Manager | Brian McCarthy |
| • Head of Security | Greg Hartigan, Arena Security |
| • Medical Co-ordinator | Glen Ellis, Code Blue |

2.2 ROLES & RESPONSIBILITIES OF SAFETY TEAM

The responsibilities of the Event Controller/Deputy Event Controller are to:

- Take overall control & responsibility for the management of the event
- Call & chair pre-event planning meetings
- Ensure the implementation of the Event Management Plan
- Ensure the provision of adequate stewards & security and first aid & medical staff for the event
- Control the event from the Event Control room from at least one and half hours before the festival starts each day until at least one hour after it has finished each day (Event Controller or Deputy)
- Conduct a post event meeting on the event

The responsibilities of the Safety Officer/Deputy Safety Officer are to:

- Ensure that the safety details & conditions agreed for the holding of the event are implemented & site layout & safety arrangements are in accordance with specifications & agreements, as far as they are matters of safety.
- Be present at all major planning meetings
- Act as a co-ordinator of all technical aspects of arrangements in so far as they impinge on safety matters
- Attend the event itself to evaluate the efficiency of structural & safety arrangements
- Pay particular attention to the crowd densities in primary viewing areas.
- Monitor first aid & rescue tactics for distressed patrons
- Take any necessary action to alleviate any perceived risks
- Recommend emergency procedures to be initiated

The Event Safety Officer is to have sufficient status, competence & authority to take responsibility for safety at the venue & to be able to authorise & supervise safety measures. He/she is to report directly to the Promoter & Event Controller

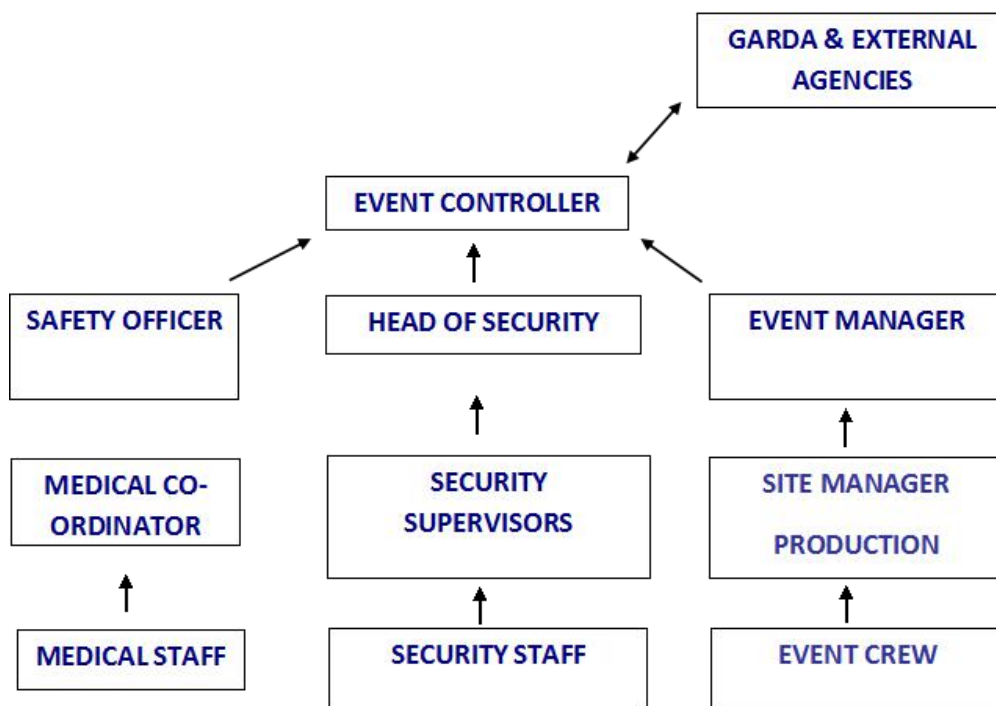
The responsibilities of the Head of Security are:

- To be responsible for the operational management of the stewarding and security arrangements for the event, reporting to the Event Controller
- To ensure adequate stewards & security are in attendance at each day of the event as agreed with the Event Controller & the Superintendent, An Garda Siochana Dun Laoghaire.
- Provide clearly defined roles & responsibilities & operational briefings for all supervisors and staff

The Responsibilities of the Event Medical Co-ordinator are to:

- Attend the relevant medical planning meetings
- Co-ordinate the medical facilities & provision
- Liaise with all medical agencies
- Act as Ambulance Incident Officer until an office from the HSE ambulance Service arrives on site.
- Be present at the event from an hour before the gates open until medical services are stood down by Event Control

2.3 ORGANISATIONAL CHART - OPERATIONAL



2.4 OBJECTIVES, RISK ASSESSMENTS, CODES OF PRACTICE

It is the promoter's objective to provide competent trained staff and recognised safety management systems including risk assessments, in order to ensure a safe event with minimum risks to the health, safety & welfare of those attending and working at the Festival.

The planning of this event has been undertaken in accordance with the recommendations of the following Codes, Guidance, Acts & Regulations, where these are considered relevant & practicable for this event:

- Code of Practice for Safety at Outdoor Pop Concerts & other outdoor musical events
- Code of Practice for Safety at Sports Grounds
- Code of Practice for Management of Fire Safety in Places of Assembly, Department of the Environment
- Fire Safety in Places of Assembly (Ease of Escape) Regulations
- Code of Practice for Fire Safety of Furnishings & Fittings in Places of Assembly, Department of Environment
- Fire Services Act 1981 & Amendment 2003
- A Framework for Major Emergency Management, PRN.A6/1509
- Health, Safety & Welfare at Work Act 2005
- Health, Safety & Welfare at Work (Construction Regs) 2013
- Health, Safety & Welfare at Work (General Applications) Regs 2007

Hazard identification & risk assessment provide the basis for this safety plan. The event specific risk assessment is provided in the Appendices. Risk assessment is a continuous process and as such the risk assessment will be updated regularly.

PART 3: EVENT SAFETY MEASURES

3.1 VENUE OCCUPANT CAPACITY

As per attached drawings the venue capacity is determined by using the available space within the sight lines of stages and other space available for members of the public.

The safe holding capacity is calculated in accordance with the Code of Practice for Pop Concerts by using 0.5m² per person

Venue	Net viewing area/ space available m ²	Occupant capacity using 0.5" /p
Main stage – open air	3.795	7,590
Race start	500	1,000
General circulation space	1200	2,400
Bear Garden	1500	1,500
Using 1 person per m2)		

Although the total capacity of all the viewing areas/tents/circulation is over 12,000 . It is proposed to set a limit of 7.500 for this event.

3.2 VENUE ENTRANCE CAPACITY

Safe and controlled entrancing will be achieved by using a barrier system

Runners will pick up their 'number plates' at the terminal Building before entering the site.

Adult runners who wish to remain on site between the afternoon run and the after party will given a wristband in exchange for their ticket when picking up their number plate. After the afternoons entertainment is finished, they may enter the Beer garden through a barred entrance.

Regular attendees for the evening entertainment will enter the site via 4 barred lanes which will be sufficient for the numbers expected

3.4 VENUE EXITING CAPACITIES

The emergency exits capacity from the site is as follows:

EXIT GATE NO	WIDTH OF EXIT (m)	NO OF PEOPLE	MARINA SIDE OR BUILDING SIDE	TOTAL PER SIDE	TOTAL PER SIDE LESS WIDEST EXIT
EEA	3	2,618	MARINA		
EEC	4	3,490	MARINA	14,834	9,598
EED	4	3,490	MARINA		
EEG	6	5,236	MARINA		
EEJ	7	6,109	BUILDING		
EEK	5	4,363	BUILDING		
EEM	4	3,490	BUILDING	13,962	7,853

Calculated at 60 persons per unit width (550mm) x 8 mins.

Total emergency exiting is over 25,000 which exceeds the proposed capacity of 7,500 and produces an emergency egress time of less than 8.5 minutes, having allowed for a discounted exit

The exit width available each each side of the venue having discounted the widest exit each side can still accommodate over 6000 using exits on one side of the venue only.

Beer Garden – the Beer Garden will have 1 exit of 5m which will lead to exit (5m) and 1 exit of 3m which will lead to exit (3m)

3.4 FIRE FIGHTING EQUIPMENT

- Stewards trained in fire fighting will be provided as part of each major security team.
- Fire extinguishers shall be placed in designated fire points, as agreed with Dublin Fire Service
- Current certification on testing & maintenance of all fire extinguishers will be provided by the specialist suppliers & shall be available for inspection.

3.5 FLAMMABLE SUBSTANCES, COMBUSTIBLE WASTE & FURNISHINGS

- Test Certificates in flammability ratings of covering materials used on stage, mixing tower and in marquees shall be provided by specialist contractors and will be available for inspection

- Storage of any combustible materials shall not be permitted on or under any staging. All combustible waste shall be disposed of in appropriate containers
- All furnishings will conform to the Code of Practice for Fire Safety of Furnishings & Fittings in Places of Assembly.

Flammable substances on site will consist of fuel for electrical generators & propane gas:

- All machinery & generators will be fuelled before the public are admitted
- Fuel will be stored in a non public area & in appropriate devices

3.6 PYROTECHNICS

There may be pyrotechnics at this event. If so, they will be licensed by the Department of Justice and approved by the Fire Officer and An Garda Siochana.

Contact: Se Black Powder Monkeys 087 234 9422

3.7 COLOURED POWDER

A Product Data Sheet will be provided for the powder. It is non allergenic, non combustible and a non irritant

Compressed air machines will be used to send coloured powder over the participants waiting at the start position at regular intervals

3.8 SMOKING

There will be no smoking in any covered area in accordance with current legislation. Signage will be posted to that effect & security will be briefed accordingly

3.9 CROWD CONTROL BARRIERS

- The front of stage barrier at the main stage will be constructed of a free standing barrier, approved for use at outdoor concerts.
- Engineering reports will be available to confirm that it is capable of withstanding a pressure of 5kN/m run, at 1.2m height.

3.10 TEMPORARY FENCING & CROWD CONTROL BARRIERS

Temporary fencing & crowd control barriers will be used at points to secure the site boundaries, emergency routes, protect structures and facilitate crowd management where necessary.

3.11 STAGING & OTHER TEMPORARY STRUCTURES

- Temporary structures such as stages, marquees & delay & mixing towers will be constructed by specialist staging & tenting contractors.
- One of the greatest risks with temporary structures is that of high winds. Contractors will provide a wind management system for their structures, an anemometer will be fitted on the highest point of the main stage and wind speeds will be monitored throughout the event by the staging contractor. Mitigation measures will be applied at the appropriate wind speed.
- A chartered engineer will inspect & certify the relevant temporary structures before the event and certification will be available for inspection.

Temporary structures at this event will include:

Main stage

Start Gantry

Ramp at West Pier
Bar marquee
First aid marquees

3.12 ERECTION OF TEMPORARY STRUCTURES

All temporary structures will be erected & dismantled in accordance with the Code of Practice for Safety at Sports Ground paragraphs 14.3 – 14.7 & the ISE Guide to Temporary Structures. All temporary structures will be erected by competent contractors on accordance with submitted calculations, plans & specification, and in accordance with their method statements and risk assessments

3.13 CERTIFICATION OF TEMPORARY STRUCTURES

All major temporary structures will be signed off by a structural engineering company

3.14 WIND MANAGEMENT OF TEMPORARY STRUCTURES

Companies erecting temporary structures will provide a wind management plan which should clearly state the Level 1 wind speed – at which speed the structure & the wind speeds require monitoring – the Level 2 wind speed at which speed mitigation measures are taken & what those measures are & Level 3 at which speed the structure should be closed and evacuation of the area initiated.

3.15 CONCESSION UNITS

The concessionaires will be managed in house by:

Brian McCarthy

bmcarthy@eventfuel.ie

083 440 5517

- All food and beverage units will be in possession of a current certificate/permit from the Health Service Executive Environmental Health Unit.
- All Food vending units will be placed at least 3m apart & at least 3m from any trees or vegetation.
- There will be no gas operated units at this event
- Crowd control barriers or temporary fencing will be used to prevent public access behind the units & to the waste storage areas.
- Units will be provided with waste management facilities and these will be managed appropriately so as not to provide a fire hazard. There will be separate waste management facilities for general, recyclable and food & water waste. 240l bins for general, recyclable, food waste & waste water will be provided and emptied regularly.
- Each unit will be equipped with the appropriate fire prevention equipment. The Event Safety Officer will inspect each unit before the event.
- Each unit will either be on hard standing or will have its own cleanable floor.
- Trader specific compounds will be provided for all food concessions which will include, trader only toilets, hand wash facilities with hot & cold water, soap & paper towels, waste water facilities & bins.

3.16 BAR FACILITIES

Bar facilities will be provided. An Occasional licence has been granted. Their locations are shown on the site plan Bars will serve beers, wine, cider, spirits and cocktails. The opening times will be as agreed with the relevant authorities.

- There will be crowd control barriers forming queuing lanes into the counter service bars to ensure strict control of the numbers within the bar area.

- Security will ensure that persons appearing to be intoxicated will not be permitted into the queues.
- Crowd control barriers and/or temporary fencing will ensure the area behind the bars are inaccessible to patrons
- Security and bar staff will check IDs for under age drinkers on a 'Challenge 21' basis. IDs will be checked at the gate also . Runners who are staying for the evening part will have to show ID in order to get the Adult wristband
- Drinks are to be served in plastic beakers only
- The bars are to be monitored closely by the Event Safety Officer and the designated Garda officer on site

3.17 ELECTRICAL & LIGHTING INSTALLATIONS

- Installation of generators & lighting will be undertaken by a competent electrician who will provide written confirmation that the installation meets the relevant ETCI standards. This will be available for inspection by the relevant authorities.
- Emergency lighting & Illuminated (maintained) exit signage in the structures is to be provided in accordance with I.S.3217

3.18 VEHICLE MOVEMENTS

- There will be a curfew imposed on movement of any vehicles within the event site during the hours the public are admitted. Only vehicles authorized by the Event Controller or Safety Officer are permitted to drive within the site during these hours.
- Vehicles may only drive on the roads. No vehicle may drive off the roads without explicit permission from the Event Controller.

- No vehicle may be parked in such a way as to obstruct emergency exits or present an obstruction to circulation of the public nor on the entrance & exit routes.

3.19 EMERGENCY EXIT ROUTES & EMERGENCY ACCESS ROUTES

- All emergency routes & exits are to be kept free of obstructions & trip hazards and to be readily usable for the duration of the event in order to comply with the Fire Safety in Places of Assembly (Ease of Escape Regulations) 1985
- Crowd control barriers at the entrances should be removed as soon as is practicable. In the event of an evacuation all barriers to be cleared to the side of an exit immediately.
- The Emergency Access Routes will be agreed with the Emergency Services. For this event it will be the opposite way to previous events ie counter clockwise. It will enter from the Marine Rd roundabout side and leave the site by the same route. The route will be barriered off to prevent pedestrian access
- Before the gates are opened to the public the Safety Officer is to check all exit gates are open and unlocked & that chains, locks etc are removed so that the gates can be opened quickly in the case of an evacuation.

3.20 LIGHTING OF SITE & EGRESS ROUTES

Lighting towers or individual lights will be placed at the entrances to the site and other key positions on the site egress routes, where necessary. These will be powered by a local electrical generator.

The main stage will be fitted with a bank of lights which will light the arena

Additional lighting will be provided for circulation routes by means of festoon lighting and tower lights

3.21 WATER SAFETY

A rescue boat will be operational in Dun Laoghaire Harbour during the opening hours of the event and for an hour afterwards.

PART 4: HEALTH, SAFETY & WELFARE ARRANGEMENTS

4.1 TOILET FACILITIES & REQUIREMENTS

These requirements for toilets & drinking water have been based on a maximum capacity of 7.500.

Toilet requirements have been calculated as follows:

- Male to female ratio 50:50
- Male requirements for toilets for 3,750 @ 1 per 500 = 8 toilets
- Male requirements for urinals for 3,750 = 20 Units = 14m of urinals
- Female requirements for 3,750 @ 1 per 100 = 38 toilets

TOTAL – minimum of 46 toilets & 14m of urinals

Toilets will be:

- Self contained chemical toilets with integral hand wash facilities
- Provided, installed & maintained over the event by a specialist company.
- Clearly signposted throughout venue
- Situated to avoid areas known to be prone to pooling.

The requirement for hand-washing facilities will be fulfilled by hand sanitisers being provided in each toilet and in the urinals areas.

4.2 ADDITIONAL TOILET REQUIREMENTS

Additional toilets will be provided in the following locations:

- Backstage areas
- Dedicated units for catering & bar units – 1 WC per 4 no units
- First Aid post

4.3 DRINKING WATER FACILITIES

Drinking water facilities will be provided:

- as specially constructed units having multiple tap outlets
- Provided at the rate of 1:1000 ie at least 8 drinking water outlets, situated at the front of the main stage, and beside toilet blocks
- The points shall be sign posted & labeled as drinking water

4.4 FACILITIES FOR PATRONS WITH DISABILITIES

The entire site is flat & wheelchair accessible. However the building is not accessible

Wheelchair accessible toilets will be provided in each block of toilets

Parking for cars with Blue mobility impaired stickers & disabled is in the parking spaces outside the venue entrance

4.5 LOST CHILDREN & CHILD PROTECTION POLICY

Lost children procedures and Frisky's child protection policy are to be found in the Appendix

4.6 LOST PROPERTY

Any property handed into staff will be brought to Event Control. Gardai will be notified of any car keys or valuables.

PART 5: ENVIRONMENTAL PROTECTION

5.1 LITTER & CLEAN UP PROGRAMME

Bins will be provided and collected & removed by a professional licensed company

Contact: Clean Event Robert 085 222 1111

Facilities provided will be:

- 60 x 240lt bins around the site including TBC recycling bins
- 20 x 1100 bins for concession unit waste
- Concessionaires will conform to food waste legislation
- 10 x litter pickers each day & until the venue is cleaned & rubbish cleared
- Immediately after the event there will be a comprehensive clean up of the designated areas & litter will be removed as soon as is practicable to an approved landfill site.
- There will be a final clean up before the site is handed back to DLHCo

5.2 WATER COURSES

All watercourses will be monitored to ensure there is no contamination from concert facilities & infrastructure

5.3 SOUND LEVELS

The promoters will ensure that the sound levels at the concert will be in accordance with legislation and sound levels will be monitored and results logged and made available to Dun Laoghaire Rathdown County Council

5.4 REMOVAL OF TEMPORARY STRUCTURES

- Removal of all temporary structures will start immediately after the event has finished
- Removal of all temporary structures & facilities will be completed within 3 days
- Reinstatement works required on the site will be completed in the time agreed by all relevant authorities

5.6 ENVIRONMENTAL IMPACT MONITORING

The following will be monitored in order to assess the environmental impact of this event on Dun Laoghaire Town:

- Sound levels – will be monitored before & during the event. Results will be provided to Dun Laoghaire Rathdown County Council. The sound levels emitted from the concerts last year were not significant at any point of noise sensitive dwelling
- Accumulation of litter – will be monitored at regular intervals, including immediately after the event
- Any congestion on entrance & exit points to the site particularly at busy times
- Any major build up of traffic or problems with parking attributable to the Festival

PART 6: COMMAND, CONTROL & COMMUNICATIONS

6.1 EVENT CONTROL

Event control will :

- Be situated in the stairwell of the Ferry Terminal Building
- House the CCTV facilities
- Serve as a base for the Event Controller/Deputy Event Controller and Safety Officer
- Have access strictly limited to member of the Event Management team and the Emergency Services, technical services and any person authorised by the Event Controller

6.2 COMMUNICATIONS

- All senior staff & supervisors will be equipped with two way radios.
- Staff will trained in the use of radios
- Laminated cards will be issued with radio channels listed on one side & key phone numbers on the other
- Event control has a phone to contact senior staff on their mobile phone as an alternative to radios
- A Standard operating procedure in case of radio failure will be agreed with An Garda Siochana

6.3 CCTV

There are ample CCTV facilities in house at the Ferry Terminal Building.

- CCTV will be operated from Event Control.

- The monitors will be in Event Control

6.4 PUBLIC ADDRESS

Public address systems will be available in the stage areas & linked via the stage managers to Event Control

6.5 LOUDHAILERS

Loud hailers will be issued to stage managers & supervisors in key locations in order to assist with crowd management & in case of public address failure

6.6 ANNOUNCEMENTS

Announcements can be made from the gantry and from the stage, in between performances. All announcements must be authorised by Event Control and, will request the person(s) concerned to come to Event Control.

6.7 MEETINGS

A briefing will take place at 11 am in Event Control to address any issues of the day. Security supervisors, Safety Officer, Medical Co-ordinator will attend. Gardai and other authorities are invited to attend. An 'exiting' meeting will take place after the main act have started their performance. Relevant security supervisors and Event Safety team will attend. A representative of the Gardai is requested to attend. This is to plan the exiting strategy. Exiting is recognised as a high risk point of the event and these meetings particularly address that concern.

PART 7: MEDICAL FACILITIES

7.1 PROVISION

Medical staff & facilities for this event will be agreed with the HSE Emergency Management Office in accordance with the recommendations for the Code of Practice for Safety at Sports Grounds

7.2 MEDICAL PLAN

A medical plan for the event will be produced following consultation with the following bodies:

- HSE Emergency Management Office
- Code Blue
- St Johns Ambulance Brigade

This will include:

- Number & type of medical & first aid staff & medical facilities as identified by appropriate risk assessment
- Outline the duties, responsibilities & reporting structure of all medical staff
- Specify the communications to be used
- Identify the organisations providing medical services
- Outline the details of the event as pertaining to the medical cover & Staff at the event
- Arrangements for Patient Report Forms, including submission to Health Services Executive, Emergency Management Office within one month of the event
- Site & event medical protocols
- Major medical Incident planning

7.3 EVENT MEDICAL CO-ORDINATOR

A Medical Co-ordinator has been appointed by the promoter. He will:

- Attend the relevant medical planning meetings
- Co-ordinate the medical facilities & provision
- Liaise with all medical agencies
- Act as Ambulance Incident Officer until an officer from the HSE ambulance Service arrives on site.
- Be present at the event from an hour before the gates open until medical services are stood down by Event Control

Glen Ellis

glen.ellis@codeblue.ie

087 917 3158

7.4 EMERGENCY AMBULANCES

HSE Emergency Management Office will agree any requirement for any paramedic led ambulances for the event. The HSE Ambulance Officer will assume the role of Ambulance Incident Officer in the event of a major incident; however the Medical Co-ordinator will assume this role until the HSE Ambulance Officer arrives on site.

7.5 VOLUNTARY ORGANISATION

First Aid will be provided by the St Johns Ambulance Brigade who will:

- Provide first aid personnel & ambulances as per the Medical Plan
- Deploy First Aid cover to the designated areas
- Deploy ambulances to the designated areas
- Liaise with HSE Ambulance Officer & Medical Control & work under the direction of Medical Control
- Maintain records of all casualties treated

7.6 FACILITIES

2 temporary First Aid Post will be provided at the locations shown on the Site Drawing

PART 8: CROWD MANAGEMENT & CONTROL

8.1 CROWD MANAGEMENT

All Areas will be monitored by means of CCTV and by security & supervisory personnel. Should an area become uncomfortable, security, directed by Event Control, will divert patrons to a different area.

8.2 PROVISION & TRAINING OF SECURITY

- The number of security personnel & stewards provided will be decided in consultation with the Superintendent, Dun Laoghaire Garda Station. A detailed risk assessment will be conducted to determine the security requirements.
- Consideration will be given to the recommendations of the Code of Practice for Safety at Outdoor Pop Concerts & other outdoor musical events
- Security staff will have undertaken event specific training and the company will be licensed by the Private Security Authority for event purposes

Arena Security

Greg Hartigan

087 262 3155

8.3 DUTIES OF SECURITY

Detailed duties of security personnel for specific areas are given in Appendix C . All security shall be under the direct control of supervisor who will report to the Head Steward who will report to the Event Controller

8.4 FIRE STEWARDS

Stewards with specific training in fire prevention & fighting will be allocated to each area as part of the normal security allocation.

8.5 IDENTIFICATION & REGISTRATION OF SECURITY

- All security personnel will wear hi-vis tabards or jackets with identifying numbers. A list of names & corresponding numbers will be available to the relevant authorities.
- All security personnel will sign in at the start & end of the shift.

8.6 BRIEFING

- All supervisors will be briefed by the Event Controller & Safety Officer before the event.
- This briefing may be attended by a senior Garda Officer and representatives from Dun Laoghaire/Rathdown Council & other emergency services
- Additional briefing will be held where necessary
- Areas to cover in briefing: Details of the event, risk assessment, audience profiles, emergency procedures, duties of personnel in specific areas, exiting arrangements, general information, lost children & property
- Supervisors will 'cascade' brief their staff

8.7 ZONES & ALLOCATION

Security will be allocated to specific areas and zones. A schedule of security shifts and positions will be available to the Gardai

8.8 INCIDENT REPORTING

All staff will provide written reports of any incidents that may occur in the course of their duties. Incident reports are required when:

- A patron has to be asked to leave or is evicted
- Involves physical intervention/involvement
- The Gardai or medical staff have to be called to an incident
- A patron has anything other than a minor complaint
- An incident involves safety issues
- Any incident they are asked to report on by the Head of Security or Event Controller

PART 9: EMERGENCY PLANS & PROCEDURES

9.1 EMERGENCY PLANS & PROCEDURES

Emergency plans & procedures for each of the following are contained in Appendices

- In the event of fire
- In the event of a bomb warning
- In the event of extreme weather
- In the event of crowd disturbances
- Show stop procedures
- Announcements
- Evacuation procedures
- Stand down
- Coded messages

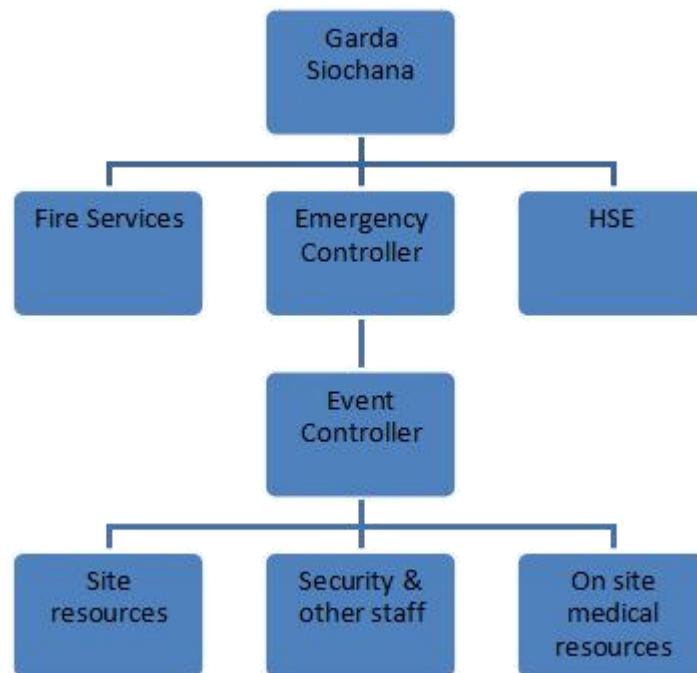
9.2 KEY PERSONNEL

- Event Controller: The person who has overall responsibility for the management of the event. S/he remains in control unless a serious emergency occurs at which stage s/he hands over control to the Emergency Controller
- Emergency Controller: The Emergency Controller is the Senior Garda Officer present who will take over control of the entire operation until or unless other Emergency Services ie Health Board & Fire Service are present , in which case each service will exercise control over its own operation

9.3 ACTIVATION OF EMERGENCY PLAN

A major emergency arises if the resources available on site – medical, security, Gardai, or fire services are not sufficient to deal with the situation.

Once this situation is identified the Event Controller shall hand over control to the senior Garda Officer present. This senior Garda Officer will become the Emergency Controller



9.4 TRANSFER OF RESPONSIBILITY TO AN EMERGENCY CONTROLLER

The transfer of responsibility to an emergency controller should be accompanied by a formal statement :‘You are now in control of operations’ and the time of transfer should be logged by both the Event Controller and the Emergency Controller, At this point the Event Controller should support the Emergency Controller with all event resources available.

The Emergency Controller shall immediately confirm the nature & location of the emergency. He/she shall immediately inform the Communications Centre at Garda Regional Headquarters that a Serious Emergency exists, or is imminent, at the \dun

Laoghaire Ferry Port & the Emergency Plan has been activated. The message should be of the following format:

‘This is, A Major Emergency has occurred or is imminent at the Dun Laoghaire Ferry Port. The Emergency Plan is now in operation & should be immediately activated’

9.6 ACTION IN THE EVENT OF A MAJOR EMERGENCY

AN GARDA SIOCHANA

- Gardai will undertake duties assigned in the Major Emergency Plan & in accordance with standard operations procedures
- Provide advice & direction to the Event Controller
- Senior Garda officer present to act as Emergency Controller if control is passed over from the Event Controller

LOCAL AUTHORITY

- The Local Authority including the Fire Service will undertake duties assigned in the Major Emergency Plan & in accordance with stand operational procedures
- Provide advice & direction to the Event Controller

HEALTH SERVICE EXECUTIVE

- The HSE will undertake the duties assigned in the Major Emergency Plan & in accordance with standard operational procedures
- Provide advice & direction to the Event Controller

EVENT CONTROLLER

- Will remain in the Event Control on being informed of a Major Emergency
- Will establish communications with:
 - The Statutory Agencies via radio/telephone/face to face
 - The Safety Officer – located at the scene of the incident

The Head of Security – located at the scene of the incident

- Will hand over control of the incident to the Statutory Agencies & provide assistance as required
- Take command of resources & ensure that assistance required by the Statutory Agencies is provided
- Brief the DCC officials of the situation & the action being taken
- Provide briefing information for dissemination to the media
- Cancel all other elements of the event until normality is restored

EVENT SAFETY OFFICER

- Will proceed to the scene & take control of all event resources at that location
- Will advise the Event Controller of the safety implications of the incident
- Will advise the Head of Security of the safety considerations that should be considered while assisting at the scene
- Take command at the scene if necessary

HEAD OF SECURITY

- Will proceed to the scene & report to the Safety Officer for instructions
- Assist the Statutory Agencies as requested. Reports on assistance rendered to be made to the Event Controller
- Redeploy security staff from other areas if necessary

EVENT STAFF

- Will be under the control of the Event Controller
- Will render assistance when requested through the Event Controller

PART 10: TRAFFIC MANAGEMENT PLAN

10.1 CONSULTATION

Consultation has been held with An Garda Siochana, Dun Laoghaire, Dublin Bus and Irish Rail (Dart) on the key elements of this traffic plan.

10.2 MEDIA COVERAGE

Traffic directions & restrictions & parking arrangements will be highlighted by the promoter by means of: press releases and inclusion in social media

10.3 TICKET SALES GEOGRAPHICAL BREAKDOWN

A ticket sales breakdown by geographical areas will be provided to An Garda Siochana 1 week prior to the event to aid with traffic management.

10.4 CARPARKING

There will be no car parking associated with this event. Event goers will be informed via the website and personal emails of the public transport options for this event and that no car parking will be provided.

10.5 DROP OFF & PICK UP FACILITIES

At the roundabout by the Dart Station

10.6 SIGNAGE

All access routes to the venue will be well signed using event signage & VMS signs. Signage location & type will be agreed with An Garda Siochana and Dun Laoghaire Harbour Company

10.7 DISABLED PARKING & ACCESS ROUTE

Will be provided at the car parking spaces just out side the venue

10.8 TRAFFIC OPTIONS

There are plenty of public transport options to the site in Dun Laoghaire – Dart and bus being the primary ones. Extra carriages and trains will be supplied by Irish Rail depending on ticket sales. Ongoing consultation will be had with Irish Rail and Dublin Bus right up to the days of the events to ensure adequate transport is available for the event goers.

APPENDICES

APP 1	Contact Details
App 2	Venue Regulations
App 3	Duties of security
App 4`	Emergency procedures <ul style="list-style-type: none">• In the event of fire• In the event of a bomb warning• In the event of extreme weather• In the event of crowd disturbances• Show stop procedures• Evacuation procedures
App 5	Child Protection Policy
App 6	Lost child procedures

APP 1 CONTACT DETAILS

BRIAN MCDERMOTT	086 317 7824	CH1	Event Controller
SOPHIE RIDLEY	083 129 3662	CH1	Safety Officer
GREG HARTIGAN	087 262 3155	CH2	Head of Security
GLEN ELLIS	087 917 3158	CH3	Medical Co-ordinator

APP 2 VENUE REGULATIONS

1. All persons entering this Venue are admitted only subject to the following Venue Regulations. Entry to the Venue shall be deemed to constitute unqualified acceptance of all these Rules and Regulations.
2. Fireworks, smoke canisters, bottles, glasses, cans, flags, banners, poles and other similar articles or containers, including anything which could or might be used as a weapon, are not permitted within the Venue, and any persons in possession of such an article or container may be refused entry or ejected from the Venue
3. Patrons are not permitted to bring alcohol into the Venue.
4. The climbing of walls, stands or other buildings in the Venue is forbidden.
5. Excessive noise such as that from the use of radio sets or other appliances and behaviour likely to cause confusion or nuisance of any kind including foul or abusive language is not permitted in any part of the Venue.
6. Unauthorised persons are not permitted to enter the stages or the river.
7. Any persons not in compliance with the instructions from a steward may be ejected from the Venue.
8. The Event Management reserve the right of admission
9. The Event Management reserves the right to refuse admission to or to eject any person who refuses to be searched by a member of the Gardaí.
10. Any person who causes an obstruction and refuses to move may be ejected from the Venue.
11. Bootstrap Ltd reserves the right for its servants or agents to remove from the Venue any person who does not comply with the Venue Regulations or whose presence at the Venue could reasonably be constructed as constituting a source of danger, nuisance or annoyance to other patrons.

APP 3 DUTIES OF SECURITY

The primary duty of all stewards is to ensure that the public are safely accommodated within the Venue in a planned manner, so as to ensure the safety and comfort of all patrons at the event.

The following are the main duties of stewards under the direction of the Event Controller and Chief Steward.

- Control and direct patrons who are entering or leaving the venue.
- Assist the diversion of patrons to other parts of the venue, including the closing of turnstiles when the capacity for any area has been reached.
- Prevent overcrowding by ensuring that crowd limits in various parts of the venue are complied with and that gangways and exits are kept clear.
- Monitor the crowd throughout for signs of distress and take action in accordance with written instructions.
- Prevent, in so far as is possible, standing on seats and climbing of fences and other structures. (Where, by virtue of the scale of the incident, stewards are unable to prevent such activity, they should immediately report the matter to Event Control).
- Patrol the venue to deal with emergencies such as raising alarms and extinguishing fires.
- Control entrances, all exit and perimeter fence gates and other strategic points.
- Be aware of the locations of fire fighting and medical personnel and equipment in their area.
- Recognise potential hazards and suspect packages and report such findings immediately to the Area Steward Supervisor or to the nearest Garda. In the case of suspect packages radio and mobile phone communications MUST NOT be used in the items vicinity.

- Comply promptly with any instruction given in an emergency by the Garda Control, Event Controller, the Event Safety Officer, or Chief Steward.
 - Identify and investigate any incident or occurrence among patrons and report findings.
 - Assist in the prevention of water incursion.
 - Report to the Chief Steward any damage or defect likely to cause injury or danger.
 - Undertake duties relating to emergency and evacuation procedures.
 - Ensure that all approaches and emergency exits are kept clear and that vehicles are correctly parked.
 - Maintain their position at their place of duty under the direction of the Area Steward Supervisor who, if it is considered necessary, can arrange for a replacement.
-
- Stewards positioned at entrances and exit gates (additional duties)
 - Control and direct members of the public entering the site undertaking search or ticket check as instructed
 - Do not allow patrons, in possession of alcohol or any offensive weapons or those who have consumed excessive alcohol, to enter the site.
 - Direct members of the public leaving the ground towards the exits.
 - Security staff deployed at gates and entrances are to ensure that these are fully opened in event of emergency and that all padlocks, chains and other fastenings are removed before the event.
-
- Stewards at Front of Stage Area (additional duties)
 - Be communicative and friendly with the audience at all times.
 - Keep constant watch of the barrier zones for patrons in difficulty and ensure that these are immediately “rescued”.

- Keep a constant watch for any patrons in trouble, any crowd sway or any crowd disturbances, inform your supervisor and follow his instructions.
- Those manning entrances to front of stage barrier zone, note that the numbers are limited in this area and that the capacity will be regulated by counting the patrons entering and leaving the area.
- Stewards on Entrance Road to Backstage Areas and Emergency Route
- Ensure that the access roads are kept free of traffic obstruction at all times and that vehicles drive the right way around the Emergency Route

APP 4 EMERGENCY PROCEDURES

Emergency procedures:

- A. In the event of fire
- B. In the event of a bomb threat
- C. In the event of crowd disturbances
- D. In case of severe weather
- E. Show stop procedures
- F. Announcements
- G. Evacuation procedures
- H. Stand down
- I. Coded messages

A ACTION ON DISCOVERY OF FIRE

1. Person discovering fire is to inform Event Control immediately either directly or through nearest member of staff with a radio, clearly stating location of fire.
2. Staff are to tackle fire using appropriate extinguishers, only if safe to do so
3. Supervisor in area is to evacuate the immediate area
4. Event Control are to:
 - Alert the Fire Brigade through a 999 call
 - Alert all security staff using a coded message clearly stating the location of the fire
 - Ensure that onsite Gardai, Medical staff and other members of the Event Management team are aware.
 - Despatch the Safety Officer or Deputy Event Controller to the location of the fire.

5. If the fire is not serious the Event Controller, on advice from the Event Management team personnel or the Security Supervisor is to issue the 'stand down' message for the incident,

6. If the fire is serious then the Event Controller in consultation with the Safety Officer & the senior Garda/Fire Officer present will make the decision to evacuate the area/venue, using the Showstop/Evacuation procedures listed below.

B EMERGENCY/SECURITY PROCEDURES IN THE EVENT OF A BOMB THREAT

1. Person receiving bomb threat is to inform Event Control immediately with full details.
2. The Senior Garda Officer, Event Controller & Safety Officer are to evaluate level of threat.
3. Event Controller is to advise Security Supervisor/s to search in designated area/s using coded message
4. Event Controller is to be immediately informed of the full details of any bomb threat.
5. The Event Controller, Senior Garda Officer and Safety Officer are to evaluate all the information received, to determine the veracity of the threat.
6. Security are to search area/s – if nothing is found the Event Controller, in consultation with the Safety Officer & the senior Garda present is to issue the 'stand down' message.
7. If a suspect package is found, Event Control are to be informed immediately, and the Event Controller in consultation with the Safety Officer & the Senior Garda Fire Officer present will make the decision to evacuate the area/venue, using the Showstop/Evacuation procedures listed below.

C. EMERGENCY PROCEDURES IN THE EVENT OF CROWD DISTURBANCE

- 1 Security Supervisor will inform Event Control who will direct additional resources to the specified area, as well as the Safety Officer/Deputy Event Controller.
- 2 Security channel to be put on alert
- 3 Event Controller on advice from the Safety officer/Deputy Event Controller will stand down situation using code or will proceed to showstop procedures as follows.
- 4 In case of crowd disturbances it often appropriate to seek assistance from the artist in calming down the crowd.(if it is safe to do so)

D.. PROCEDURES IN CASE OF SEVERE WEATHER

In case of adverse weather conditions – heavy rain and/or high winds, the situation will be monitored by the Event Controller and the Event Organisers in conjunction with the Emergency Services, if present. If these weather conditions are such as to pose a serious danger to public safety, as in the case of high winds, any or all of these following measures may be taken either permanently or temporarily:

- Closing of certain areas eg tents, certain fields
- Closing of site car parks and alternative arrangements being made
- Halting of the performances

Obviously there might be a point during the weekend at which the event would have to be cancelled because it had become unsafe to continue. However it is not envisaged that adverse weather could be responsible for cancelling the event in advance of the days of the event.

E. SHOWSTOP PROCEDURES IN THE EVENT OF CROWD DISTURBANCES, FIRE ON/AROUND THE STAGE, STRUCTURAL COLLAPSE & OTHER SITUATIONS REQUIRING THAT THE SHOW BE STOPPED.

It is to be understood that a 'showstop' may or may not lead to an evacuation of that area or of the site as a whole. An evacuation of the whole site is likely to be a staged evacuation. If following a showstop, the situation is rectified the performance may be restarted.

In the remote event of a concern for public safety, be it bomb threat, fire, crowd disturbance, extreme weather or other incident the procedures are as follows:

The Artist should appoint an authorised representative who is the contact point if a show stop is necessary. This person should have the authority to stop the show and be situated at the stage during the performance.

Besides the artist themselves, the following are authorised to stop a show:

The Event Controller ,Safety Officer, Production Manager & the Stage Managers

(A show stop may be requested by any of the Emergency Services but must be carried out by one of the above through the authorised Artist representative.

1. Event Controller or Stage Manager contacts Artist representative and explains situation.
2. Stage manager alerts Systems engineers at the front of house and monitors. Lighting director to 'white light' the stage & audience
3. Artist representative walks onto stage and explains situation to artist and then either escorts them off the stage or asks Artist to make announcement if it is safe and appropriate for him/her to do so.
4. Announcement is made through lead vocals microphone, with an emergency microphone as back up., either by Artist or by stage manager.(Approved announcements are listed at end of this appendix)

5. In the case of a need for public evacuation, stage manager makes appropriate announcement whilst artist, band and crew are escorted to safety.
6. Systems engineer and stage manager to remain at positions until majority of audience have vacated arena
7. If the situation is very urgent, the stage manager is authorised to call a show stop on his/her own authority – letting Event Control know as they are doing it and before any announcement is made for an emergency evacuation

F. EMERGENCY ANNOUNCEMENTS

- Ladies & Gentlemen, It become necessary to evacuate this area/arena. Please move quickly & calmly to the nearest Emergency Exit & follow the instructions of the Gardai & security staff
- Ladies & Gentlemen. We have to stop the show for the time being. No-one is in any danger; we are having discussions with the Gardai/Fire Service & will restart the show as soon as possible
- Ladies & Gentlemen it has become necessary to stop the show temporarily. We will give you more information shortly
- Ladies & Gentlemen, due to crowd difficulties we are stopping the show temporarily. Please move away from the area of crowd disturbance and obey the instructions of security staff. As soon as the situation is resolved we will restart the show.

All stage managers will have copies of these announcements along with show stop procedures

G. EVACUATION PROCEDURES

1. If an evacuation is necessary due to a serious fire, bomb threat or other emergency the following procedures would be initiated:
2. The Event Controller would make the following radio announcement to all channels: This is a special announcement, Due to an emergency situation in ... it has become necessary to evacuate the site/area. Please move to evacuation positions. Assembly points are as follows Everyone is to turn to channel 1.' Everyone is to understand to maintain radio silence except for urgent communications.
3. If there was a performance(s) in the specified area, show stop procedures would be initiated
4. Gate/exit stewards would open their gates and secure them open to facilitate orderly evacuation of patrons.
5. In the event of a stage fire or no available PA , each steward will repeat the announcement to those patrons in his/her general area, using a loud hailer if she/he has one. It is important that all announcements be made in a calm clear voice.
6. The Event Controllers and the Senior Garda Officer on site & the Fire Service (if present) will monitor the progress of the evacuation by radio contact with security supervisors and through the CCTV and will issue additional instructions as necessary
7. In the unlikely event of a total evacuation of the site being necessary, this is to be initiated in close consultation with the Senior Garda on site & off site to ensure the necessary Garda preparation off site
8. In this incident and any emergency declared a major incident the Event Controller will hand over control to the Senior Garda present who will become the Emergency Controller. This handover will be written & signed.

9. In this and any situation where the emergency services are involved festival personnel will fully assist these services as required.

H. STAND DOWN

When the potential emergencies above have been dealt with or have turned out to be a false alarm the message will be sent over all radios All units stand downCoded message.... has left the area.'

I. CODED MESSAGES

The codes that are being used for fire and bomb threat will be given to the security staff and stewards and key personnel at the staff briefings and will also be given to the Emergency Services and the voluntary organisation

APPENDIX 5 CHILD PROTECTION GUIDELINES

Frisky Promotions Ltd recognise and strive to abide by the following guiding principles for Child Protection:

- The welfare of the child or young person should be at the heart of our productions
- To recognise that all children and young people, regardless of age, disability, gender, racial or ethnic origin, religious belief and sexual identity have a right to protection from harm or abuse
- All children and young people should be treated with care, respect & dignity
- To recognise that all children have the right to be heard, listened and taken seriously
- All staff should recognise that those working at family events may be perceived by children and young people as trusted persons and therefore all staff should abide by these principles
- Ensure communication with children and young people is open and clear
- Assess the risks posed to children when undertaking out activities, as part of the overall risk assessment process
- Ensure all staff understand all procedures concerning children and young people particularly those that concern children that are separated from their parents or guardians
- Adopt the safest possible practices to minimise the possibility of harm or accidents happening to children and to protect staff and volunteers from the necessity to take risks and leave themselves open to accusations of abuse.

Following on from these guidelines we recognise that all staff should be briefed on the event's safety policies concerning children and young people and in particular the procedures if a child or young person should be lost or be found separated from their parents or guardians

APPENDIX 6 LOST CHILDREN PROCEDURES

LOST & FOUND CHILDREN

In order to safeguard the welfare of a lost/found child and to protect staff the following procedures should be followed.

1. Found Child

If a child is identified as being without their parents or guardian e.g. if they present themselves to staff or are discovered alone at the events, the staff member should:

- Ask for a colleague to join them
- Reassure the child & ask for their name & details of their parent or guardian
 - Who are you here with?
 - When & where did you last see them?
 - What do they look like?
- Contact Event Control using the word Disney
- Eg Event Control Disney from Tented area – please advise
- Do not use child's name on the radio
- If requested by control and with a minimum of two people accompanying the child at all times, the child may be escorted to the First Aid Post which is the designated lost/found children point
- Staff should not – Touch the child
 - give them anything to eat or drink
 - pass them onto the care of another adult

2. Missing child

If an adult presents themselves to a member of staff and claims to have lost a child, the member of staff should:

- Ask for a colleague to join them
- Reassure the adult & ask for their name & details of the lost child
 - What is the child's name?
 - What does the child look like?

- When & where did they last see the child?
- Where are they from?
- Contact Event Control & use the code word Mr Walt e.g. Event Control I have Mr Walt at the Food & Drink area. Please advise
- Event Control to alert all security to ensure the all exit points from the Park are covered & & to look for a lost child on their own trying to leave the Park
- Do not use either the adults or the child's name on the radio
- If requested by Event Control escort the adult to the designated Lost Children Point at the First Aid Post

3. Re-uniting

Before a found child is re-united with their claimed parent or guardian, staff should:

- Check with the child – ‘Is this who you came here with today?’
- Confirm that the biographical details ‘add-up’ & trust gut instinct & ask for help if unsure
- Record the details of the incident

App 7 Event specific risk assessment

Subject	Hazard	To Whom	Controls	Residual risk	Further action needed
Venue on sea front	Drowning High Winds	Public Staff Security Performers Public Performers Staff Security	Rescue boat to be operational; during opening hours Wind management plan in place for all temporary structures Anemometer on site	Low Low	
Lost children	Distress	Public Staff Security	Procedures in place & briefed to staff & security Frisky's Child Protection Guidelines to be briefed to staff, security & volunteers	Low	
Overcrowding of particular areas	Injuries	Public Staff Security	Security to direct patrons into other areas	Low	Constant vigilance
5pm – 6.30pm	Underage having access to alcohol	Public	All adults wishing to stay for evening entertainment to show ID to gain wristband for Beer Garden	Low	

General event risk assessment

Access for emergency services	Delay in emergency services response due to inadequate access	Public Staff Security	Access routes for emergency services pre agreed and circulated Access route around entire site Access route to be barriered off Security to maintain exits &	Low	
-------------------------------	---	-----------------------------	---	-----	--

			access		
Raising fire alarm	Delay in emergency response to fire or other incident	Public Staff Security	Adequate number of 2 way radios on site Staff and security briefed as to emergency procedures, nearest staff with radio, nearest fire point & emergency exit Emergency announcements to be made on public address system or loud hailer as appropriate	Low	Security & staff briefing at start of each shift
Slips, trips & falls	Impediment to emergency evacuation	Public Staff Security	Cables to be flown or matted All items proud of ground level likely to cause trip hazard to be removed or fenced/barriered off Cables to be flown or ramped Temporary lighting installed Staff to be briefed to be vigilant for hazards & to report defects Daily pre event opening inspection by event mgr Regular cleaning of site by professional contractor		
Litter and/or combustible waste	Trips & falls Burns Fatalities	Staff Security Public	Pre event opening checks Regular cleaning of site Regular emptying of bins No accumulation of litter allowed	Low	Constant monitoring by security & event manager for litter &

					ignition sources
Visibility in case of fire/ emergency	Trips & falls Burns Fatalities	Staff Security Public	Adequate lighting Emergency lighting Maintained emergency exit signage	Low	
Overcrowding	Trips & falls Crushing Fatalities	Staff Security Public	Number of persons allowed in structures to be limited	Low	
Fire fighting equipment	Injuries Burns Fatalities	Staff Security Public	Adequate appropriate fire extinguishers provided by specialist contractors Use of licensed security	Low	Check fire extinguishers present & full at start of each shift
Electricity	Electrical shock Burns	Staff Public	All electrical installations to be carried out to RECI standards All electrical equipment to be compatible with venue supply Ensure no overloading Ensure suitable over current & shock protection is provided to all electrical circuits All electrical appliances to be PAT tested Generators to be earthed & bonded All Cables to be flown or cable ramped Generators to be fenced off from public	Low	
Fuel	Burns	Staff	Only diesel generators to be	Low	

	Fatalities	Security Public	used No petrol generators Generators to be fuelled before public entry Use of specialist contractors		
High winds temporary structures	Structural collapse, fire	All	Weather conditions to be monitored at all times Anemometer to be monitored in case of high winds Emergency procedures in place & staff briefed	Low	
Rain	Overcrowding of sheltered areas Crushing Structural collapse	All	Monitoring of weather conditions Security to be vigilant of occupant capacity when raining or high winds	Low	
Overcrowding of venue	Crushing Injuries Panic	All	Occupant capacity to be maintained Constant monitoring of patron numbers by event manager	Low	
Allergens	Medical emergency illness	All	Allergen information to be displayed	Low	