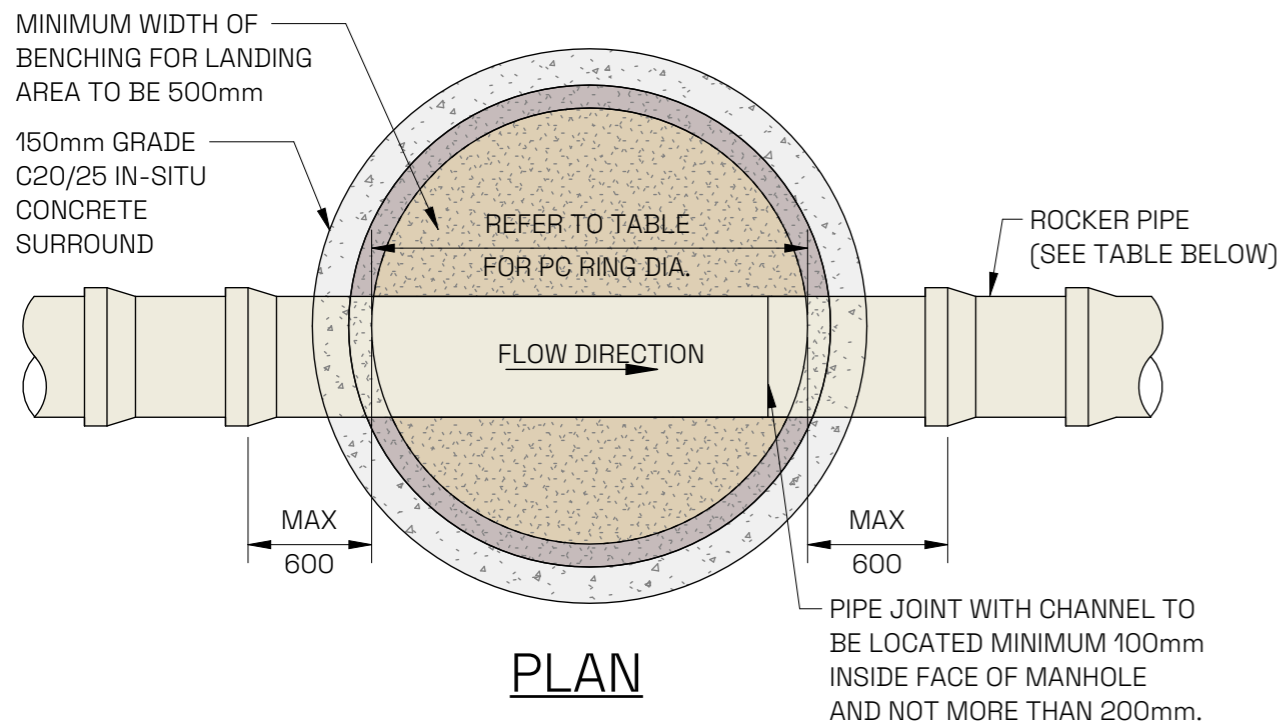


Title: TYPE B - PRECAST CONCRETE MANHOLE

Dwg No: TYP-C-012

Scale@A3: 1 : 25

Notes: REFER TO TYP-C-010 FOR CONSTRUCTION NOTES  
 SUITABLE FOR INTERNAL FOUL AND SURFACE WATER MANHOLES  
 GROUND TO SOFFIT DEPTH = LESS THAN 3.0m  
 MANHOLE DETAIL FOR PIPE Ø = LESS THAN 525mm



**PLAN**

**NOTE:**  
 \* SEWERS GREATER THAN 450mm Ø ARE OUTSIDE THE SCOPE OF THE STANDARD DETAILS. MANHOLE SIZE OF THESE CHAMBERS MAY BE REQUIRED DUE TO MULTIPLE PIPES WITHIN MANHOLE.

COVER TO BE SET IN CEMENTITIOUS EPOXY RESIN/POLYESTER MORTAR 30N/mm<sup>2</sup>

MANHOLE COVER AND FRAME SHALL COMPLY TO IS EN 124 AND BS 7903 (ALL CLASS D400 COVERS SHALL HAVE MIN. FRAME DEPTH 100-150mm) MIN. OPE. 600x600mm or 600mm Ø

1 Min. TO 3 Max. COURSES OF CLASS B SOLID ENGINEERING BRICKS SET IN M30 MORTAR TO ISEN 998 (PROPRIETARY PRECAST RISER PIECES BEDDED ON M30 MORTAR MAY BE USED TO ACHIEVE CORRECT TOP OF COVER LEVEL 2 No. MAX.)

PRECAST CONCRETE MANHOLE RINGS TO IS 420 IN CONJUNCTION WITH IS EN 1917 : 2004

ELASTOMETRIC JOINT SEAL TO EN 681

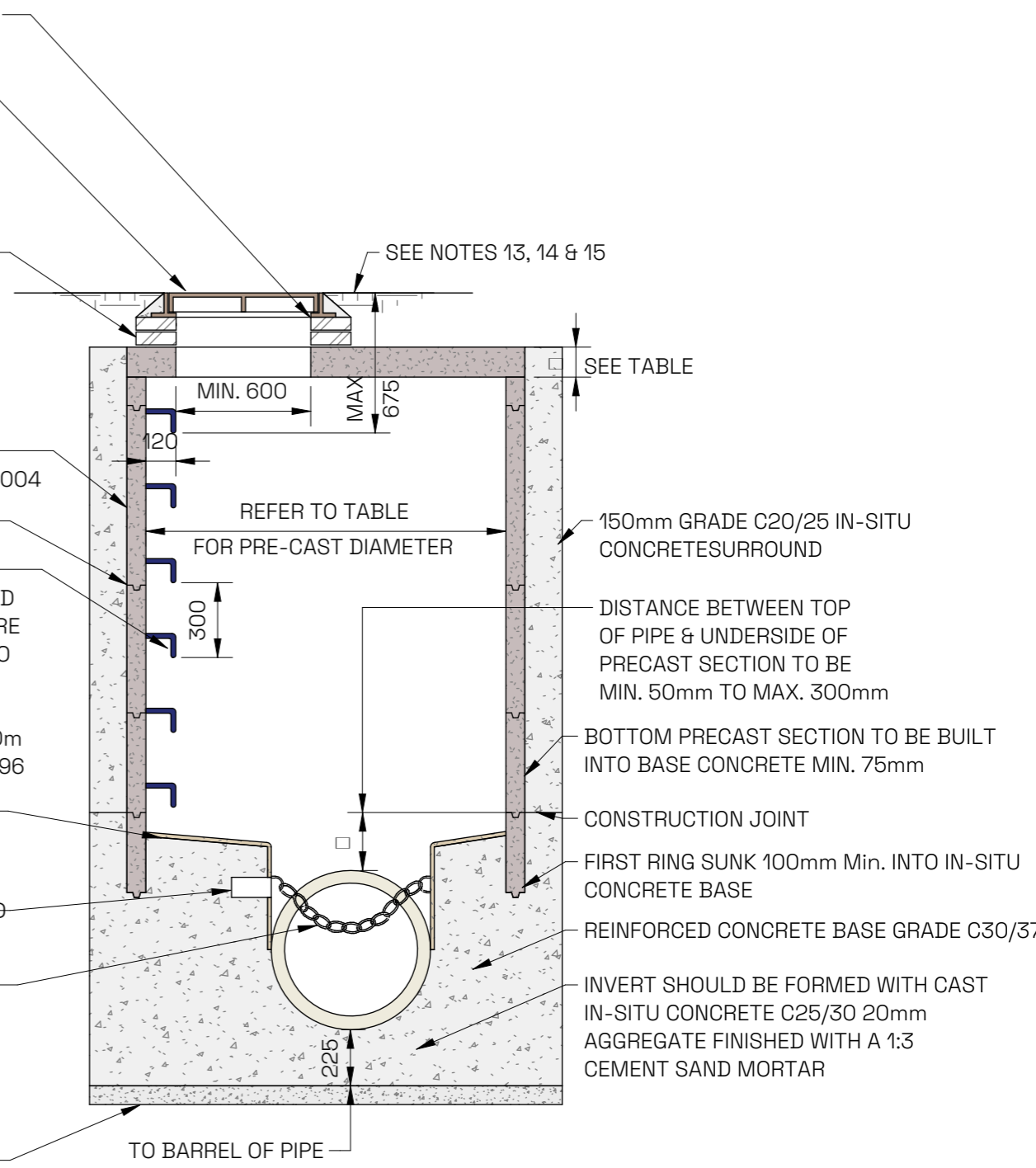
MANHOLE STEPS TO COMPLY WITH IS EN 13101, TYPE D, CLASS 1, GALVANISED MILD STEEL & PLASTIC ENCAPSULATED. STEPS ARE REQUIRED IN MANHOLES UP TO A GROUND TO PIPE SOFFIT DEPTH OF LESS THAN 3.0m. MANHOLE LADDERS ARE REQUIRED FOR MANHOLES WITH A DEPTH IN EXCESS OF 3.0m & LADDERS ARE TO COMPLY WITH IS EN 14396

1: 3 CEMENT:SAND MORTAR WITH STEEL TROWEL FINISH AT A 1:30 SLOPE TOWARDS THE CHANNEL

SELF CLEANING TOE HOLES TO BE PROVIDED WHERE CHANNEL EXCEEDS 600mm WIDE

STAINLESS STEEL CHAIN IN "DOWN" POSITION SECURED TO RESTRAINING HOOK, WHEN CHAMBER IS OCCUPIED WHERE THE PIPE DIAMETER IS 450mm OR MORE

75mm GRADE C12/15 BLINDING CONCRETE



**SECTION**

MINIMUM MANHOLE Ø "D"			
Ø OF LARGEST PIPE IN MANHOLE (mm)	INTERNAL Ø OF MANHOLE (mm)	MIN. PRECAST ROOF SLAB EFFECTIVE THICKNESS (mm)	MIN. IN-SITU ROOF SLAB THICKNESS (mm)
LESS THAN 375	1200	160	225
375 TO 450	1350	160	225
500 TO 750*	1500	170	225

ROCKER PIPE LENGTH	
PIPE Ø (mm)	ROCKER PIPE LENGTH (mm)
150 TO 600	600
GREATER THAN 600 TO 750*	1000
GREATER THAN 750*	1250