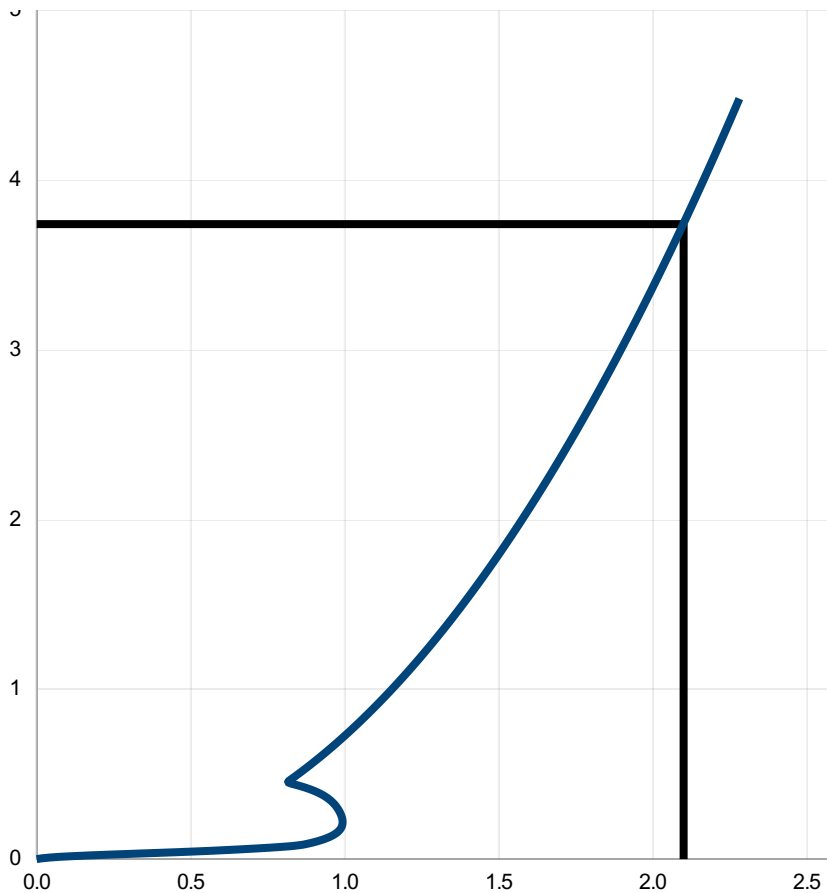


Technical Specification

Control Point	Head (m)	Flow (l/s)
Primary Design	3.740	2.100
Flush-Flo™	0.218	0.993
Kick-Flo®	0.451	0.811
Mean Flow		1.480



hydro-int.com/patents



Head (m)	Flow (l/s)
0.000	0.000
0.129	0.949
0.258	0.989
0.387	0.919
0.516	0.860
0.645	0.949
0.774	1.028
0.903	1.101
1.032	1.169
1.161	1.232
1.290	1.292
1.419	1.349
1.548	1.403
1.677	1.454
1.806	1.504
1.934	1.552
2.063	1.598
2.192	1.643
2.321	1.686
2.450	1.729
2.579	1.770
2.708	1.809
2.837	1.848
2.966	1.887
3.095	1.924
3.224	1.960
3.353	1.996
3.482	2.031
3.611	2.065
3.740	2.099

DESIGN ADVICE

The head/flow characteristics of this SHE-0050-2100-3740-2100 Hydro-Brake® Optimum Flow Control are unique. Dynamic hydraulic modelling evaluates the full head/flow characteristic curve.



The use of any other flow control will invalidate any design based on this data and could constitute a flood risk.



DATE	06/02/2025 09:02
Site	Wildrock
DESIGNER	Arnaud Chaumont
Ref	24094

SHE-0050-2100-3740-2100
Hydro-Brake® Optimum