

COMHAIRLE CHONTAE DHÚN LAOGHAIRE-RÁTH AN DÚIN  
**DÚN LAOGHAIRE - RATHDOWN COUNTY COUNCIL**  
COUNTY DEVELOPMENT PLAN 2022-2028  
**Proposed Amendments to Draft Plan**  
**November 2021**  
Supplementary Mapping Booklet

**Amendments to Map B1**

- Mapping note removed
- Mapping note added
- Cherrywood Planning Scheme added to map & legend
- Open Spaces amended to reflect Maps 1-14 of Amendments to Draft County Development Plan
- Beckett Park & Ticknick Park added

- Rivers and Water bodies within the County
- EU Annex Habitats
- EU Annex Habitats
- Locally Important Biodiversity Sites (LIBS)
- Proposed Natural Heritage Areas
- Special Areas of Conservation (SAC)
- Special Protection Areas (SPA)
- Open Space
- Cherrywood Planning Scheme**
- County Boundary

**Policy Objective GIB18:**  
**Protection of Natural Heritage and the Environment**

- European sites and pNHAs
- Policy Objective GIB19: Habitats Directive
- Policy Objective GIB21: Designated Sites

- Annex I Habitats and Locally Important Biodiversity Sites**
- Policy Objective GIB22: Non-Designated Areas of Biodiversity Importance

- Open Space**
- Policy Objective OSR7: Trees, Woodland and Forestry
- Policy Objective GIB22: Non-Designated Areas of Biodiversity Importance

**Note: The map will be updated at amendment stage with data from the forthcoming wildlife corridor plan**

**This map is indicative only and does not purport to show all occurrences of ecologically sensitive sites. Locally Important Biodiversity Sites (LIBS) do not have a legal status.**



© - Ordnance Survey Ireland, 2021

Planning Department

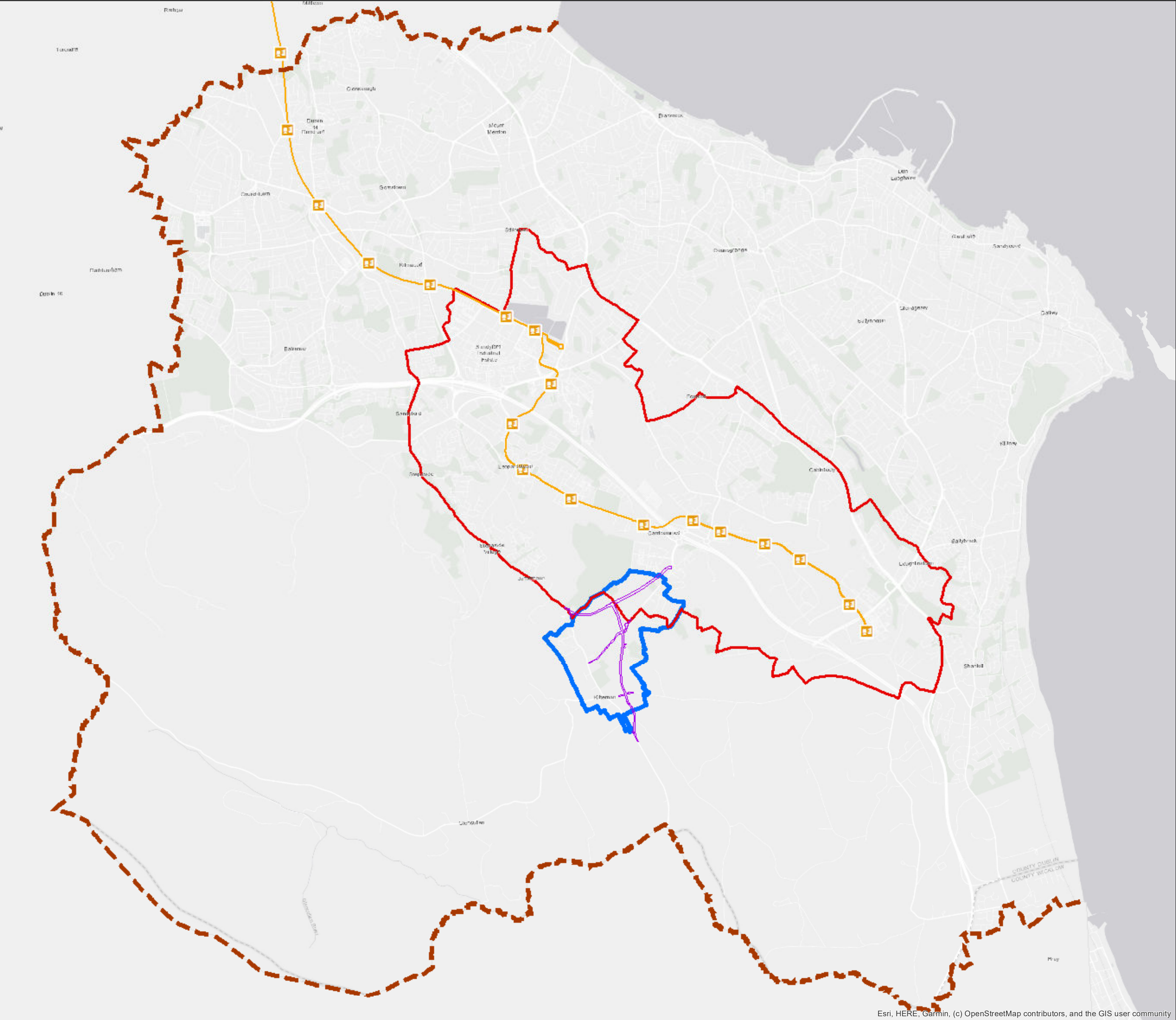
M Henchy  
Director of Planning



**Ecological Network Map**

Senior Planner:	L. McGauran	Chief Technician:	
Prepared By:	A. Murray	Drawn By:	M. Hennessy
Date:	November 2021	Scale:	1:36,000
Map No.	B1		











COMHAIRLE CHONTAE DHÚN LAOGHAIRE-RÁTH AN DÚIN  
**DÚN LAOGHAIRE - RATHDOWN COUNTY COUNCIL**  
COUNTY DEVELOPMENT PLAN 2022-2028  
Proposed Amendments to Draft Plan  
November 2021  
Supplementary Mapping Booklet

[Amendments to Map T1](#)

Map number amended

-  Boundary of Section 49 Supplementary Development Contribution Scheme Glenamuck Road
-  Boundary of Section 49 Supplementary Development Contribution Scheme Luas B1
-  Luas Line
-  Luas Stations
-  Kiltiernan / Glenamuck Distributor Road
-  County Boundary



© - Ordnance Survey Ireland, 2020

Planning Department

M Henchy  
Director of Planning



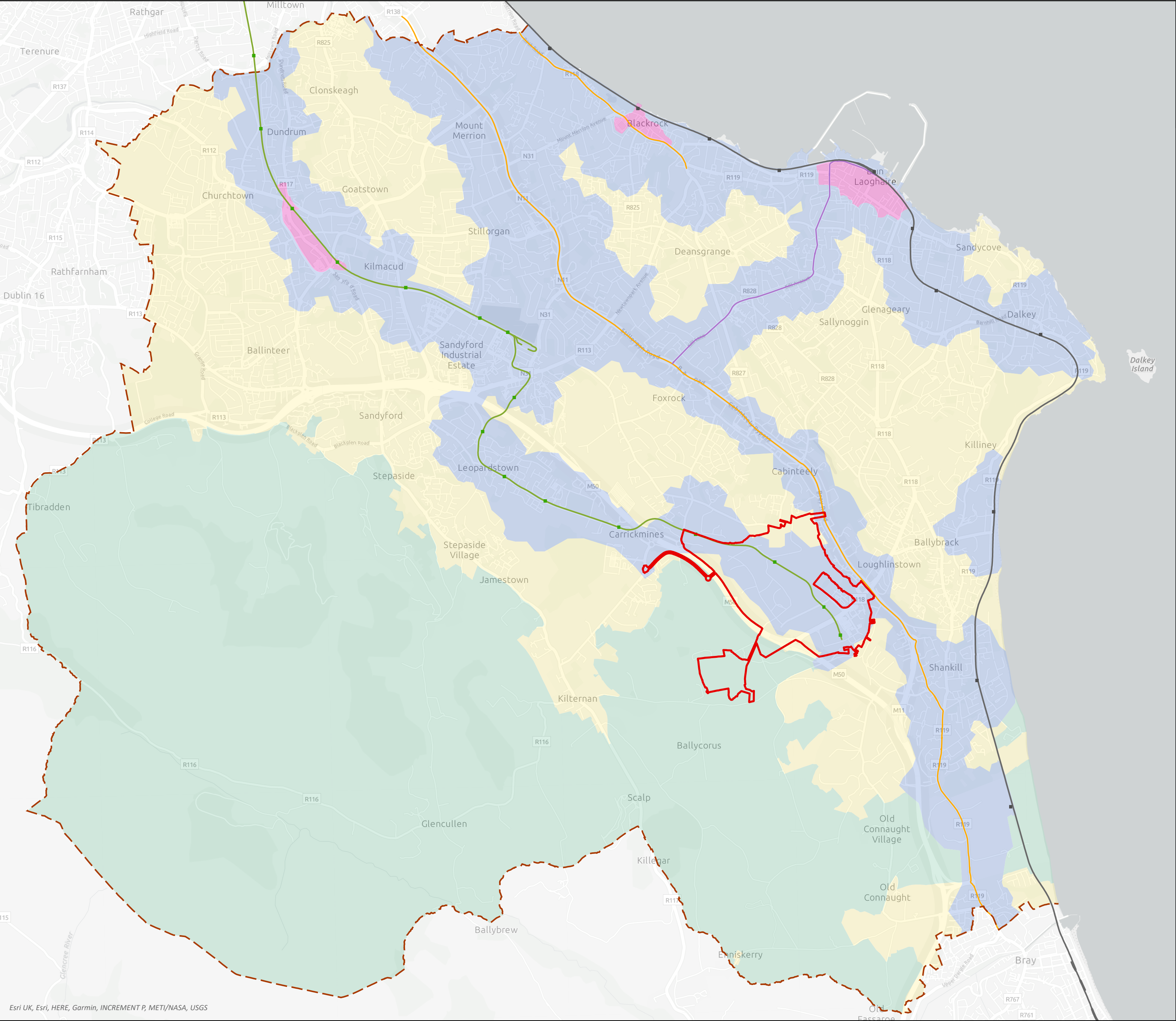
Section 49 Supplementary Development  
Contribution Scheme

Senior Planner: L. McGauran Chief Technician:

Prepared By: L. McGauran Drawn By: M.Hennessy

Date: November 2021 Scale: 1:36,000 Map No. **T1**





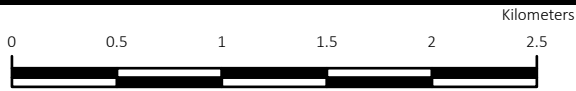
COMHAIRLE CHONTAE DHÚN LAOGHAIRE-RÁTH AN DÚIN  
**DÚN LAOGHAIRE - RATHDOWN COUNTY COUNCIL**  
COUNTY DEVELOPMENT PLAN 2022-2028  
Proposed Amendments to Draft Plan  
November 2021  
Supplementary Mapping Booklet

[Amendments to Map T2](#)

Mapping note amended

- Zone 1
- Zone 2
- Zone 3
- Zone 4
- Cherrywood Planning Scheme  
(Refer to the Cherrywood Planning Scheme for objectives within its boundary)
- County Boundary
- Dart Station
- Luas Stop
- Dart Line
- Luas Line
- Propose Core Bus Corridor
- Kill Ln/Ave, Mounttown Bus Route

Note: The Parking Zone Map is indicative and there may be potential for an area to move from one zone to another during the lifetime of the plan due to the presence or delivery of permeability links which would increase the walkability catchment and/or due to future public transport provision including the Luas extension to Bray. This map should be read in conjunction with Section 12.4.5 and Table 12.6 Car Parking Zones and Standards, Table 12.7 Sandyford Urban Framework Plan Area- Parking Maximums For All Future Residential Developments and Section 4.2 'Sustainable Transport Infrastructure Policies and Objectives' – Parking Objectives TAM14 in Sandyford Urban Framework Plan.



© - Ordnance Survey Ireland, 2021

Planning Department

M Henchy  
Director of Planning



Parking Zones

Senior Planner:	L. McGauran	Chief Technician:	
Prepared By:	M. Costello	Drawn By:	H. Bradley
Date:	November 2021	Scale:	1:36,000
		Map No.	T2