

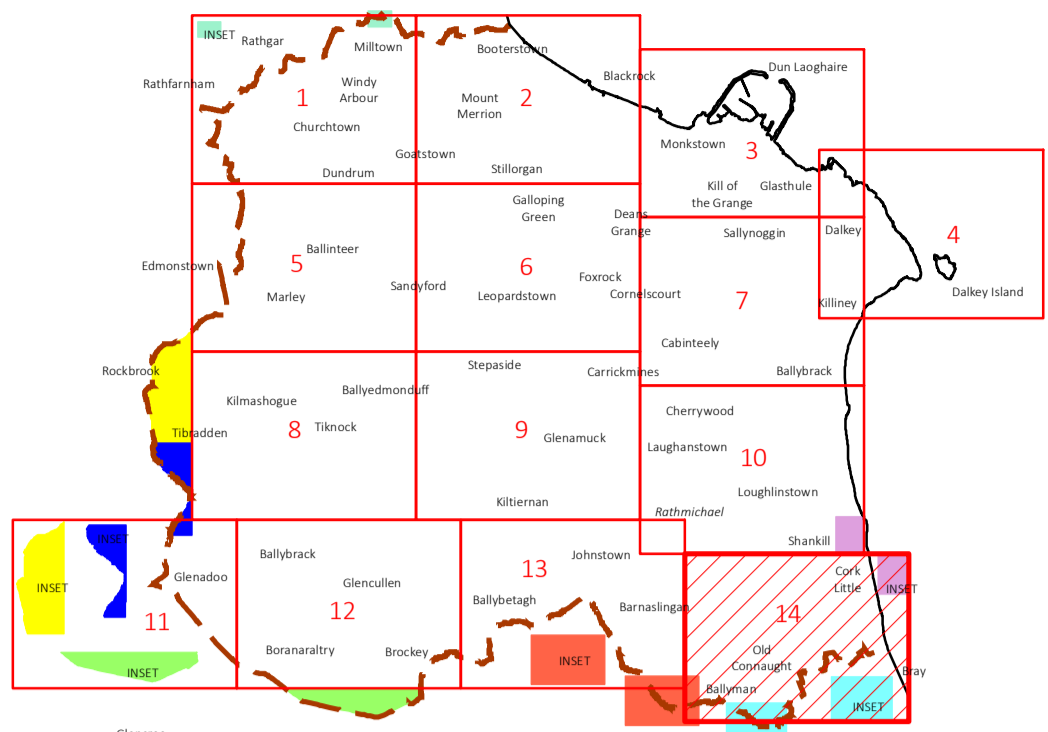
COMHAIRLE CHONTAE DHÚN LAOGHAIRE-RÁTH AN DÚIN

DÚN LAOGHAIRE-RATHDOWN COUNTY COUNCIL

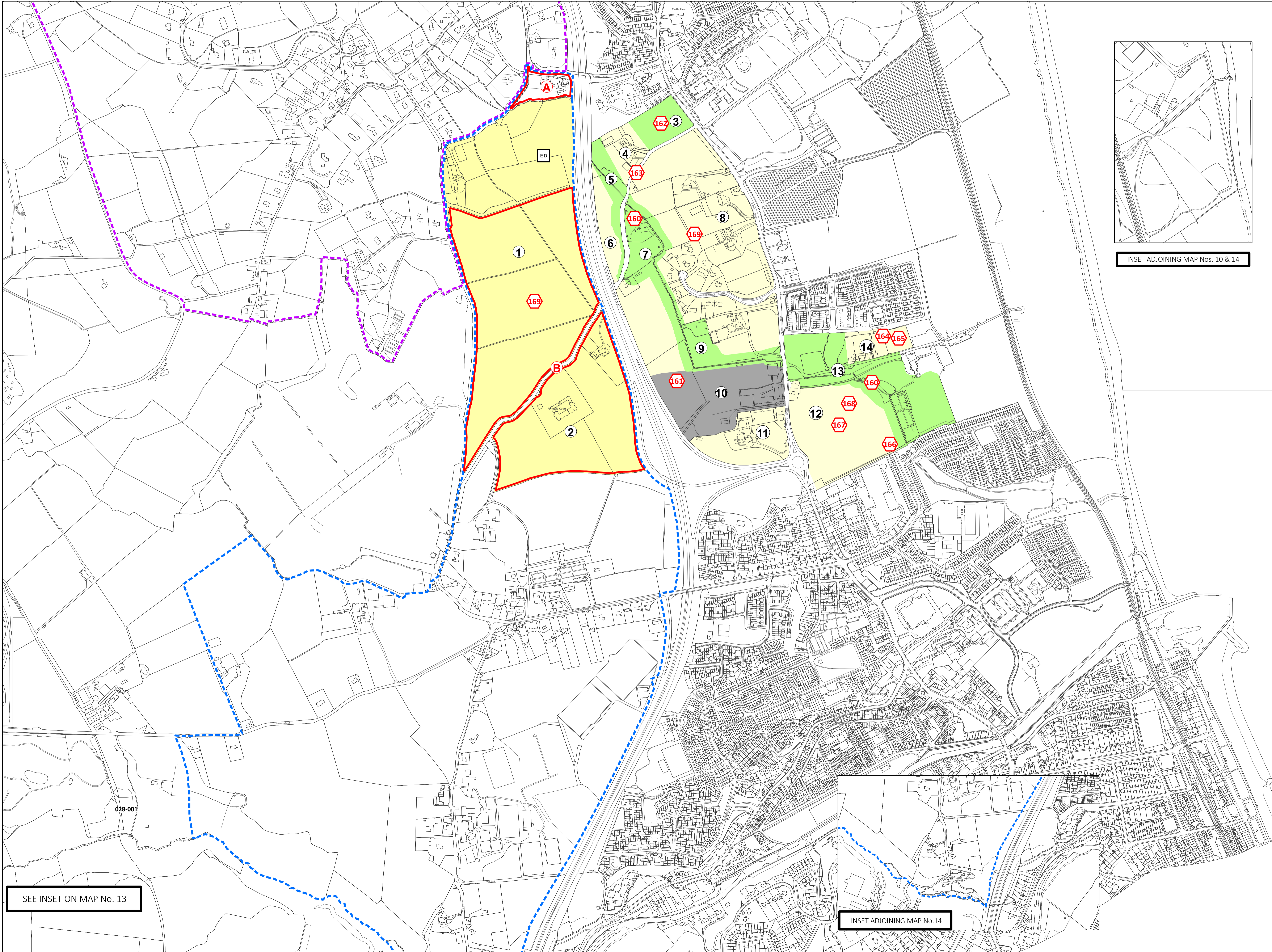
COUNTY DEVELOPMENT PLAN 2022-2028



Proposed Variation No.1 - December 2025



INDEX



- Proposed Land Use Zonings**
- Objective A To provide residential development and improve residential amenity while protecting the existing residential amenities.
- Objective A1 To provide for new residential communities and Sustainable Neighbourhood Infrastructure in accordance with approved local area plans.
- Objective F To preserve and provide for open space with ancillary active recreational amenities.
- Objective SNI To protect, improve and encourage the provision of sustainable neighbourhood infrastructure.

- Proposed Zoning Changes**
- Change from existing land use zoning 'GB' to proposed land use zoning 'A1'
 - Change from existing land use zoning 'GB' to proposed land use zoning 'A1'
 - Change from existing land use zoning 'GB' to proposed land use zoning 'F'
 - Change from existing land use zoning 'GB' to proposed land use zoning 'A'
 - Change from existing land use zoning 'GB' to proposed land use zoning 'F'
 - Change from existing land use zoning 'GB' to proposed land use zoning 'A'
 - Change from existing land use zoning 'GB' to proposed land use zoning 'F'
 - Change from existing land use zoning 'GB' to proposed land use zoning 'A'
 - Change from existing land use zoning 'GB' to proposed land use zoning 'F'
 - Change from existing land use zoning 'GB' to proposed land use zoning 'SNI'
 - Change from existing land use zoning 'GB' to proposed land use zoning 'A'
 - Change from existing land use zoning 'GB' to proposed land use zoning 'A'
 - Change from existing land use zoning 'GB' to proposed land use zoning 'F'
 - Change from existing land use zoning 'GB' to proposed land use zoning 'A'

- Proposed Removal / Adjustment**
- A Boundary adjustment to the proposed Rathmichael Plan
- B Removal of Strategic Land Reserve boundary

- Proposed Objective Changes**
- 160 Proposed new Specific Local Objectives
- ED Proposed Education Site
- Proposed Rathmichael Plan Boundary
- Old Connaught Local Area Plan Boundary
- County Boundary



© - Tallte Eireann, 2025

Director of Planning: P.Kennedy
Senior Planner: L.McGauran