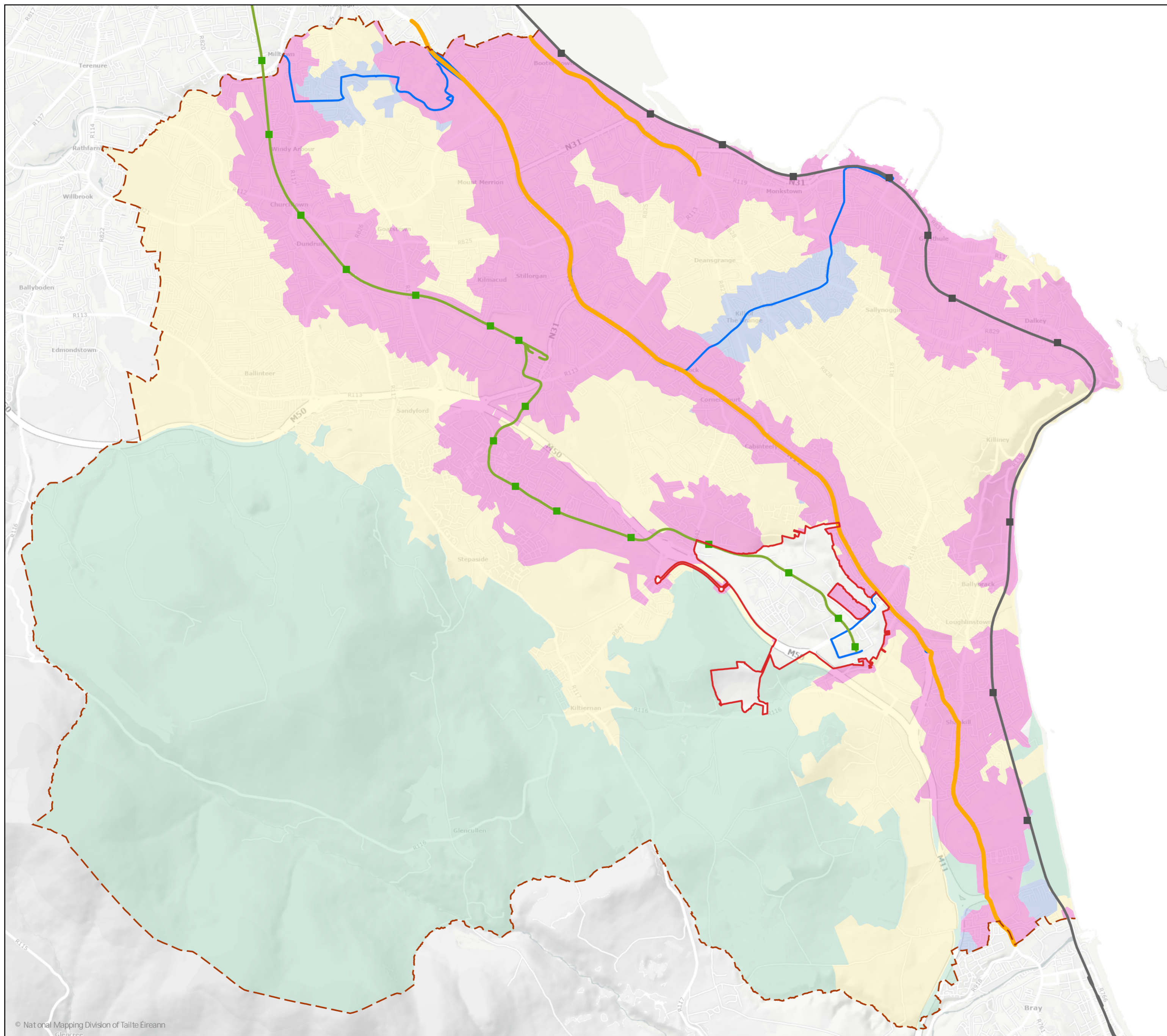


COMHAIRLE CHONTAE DHÚN LAOGHAIRE-RÁTH AN DÚIN
 DÚIN LAOGHAIRE - RATHDOWN COUNTY COUNCIL
 COUNTY DEVELOPMENT PLAN 2022-2028
 Proposed Material Alterat ons to
 Proposed Variat on No.1 - May 2026
 Supplementary Mapping Booklet



- Zone 1
- Zone 2
- Zone 3
- Zone 4
- Cherrywood Planning Scheme
(Refer to the Cherrywood Planning Scheme for object ves within its boundary)
- County Boundary
- Dart Stat on
- Luas Stop
- Dart Line
- Luas Line
- Propose Core Bus Corridor
- High Frequency BusConnects Route

Note: The Parking Zone Map is indicat ve and there may be potent al for an area to move from one zone to another during the lifet me of the plan due to the presence or delivery of permeability links which would increase the walkability catchment and/or due to future public transport provision including the Luas extension to Bray. This map should be read in conjunct on with Sect on 12.4.5, Table 12.6 Car Parking Zones and Standards, Table 12.7 Sandyford Urban Framework Plan Area- Parking Maximums For All Future Resident al Developments and Sect on 4.2 'Sustainable Transport Infrastructure Policies and Object ves' - Parking Object ves TAM14 in Sandyford Urban Framework Plan.



© - Tailte Éireann 2026

Planning Department
 P. Kennedy
 Director of Planning



Parking Zones

Senior Planner:	L. McGauran	Chief Technician:	M. Hennessy
Prepared By:	Z. Horan	Drawn By:	M. Hennessy
Date:	May 2026	Scale:	1:36,000
		Map No.	T2