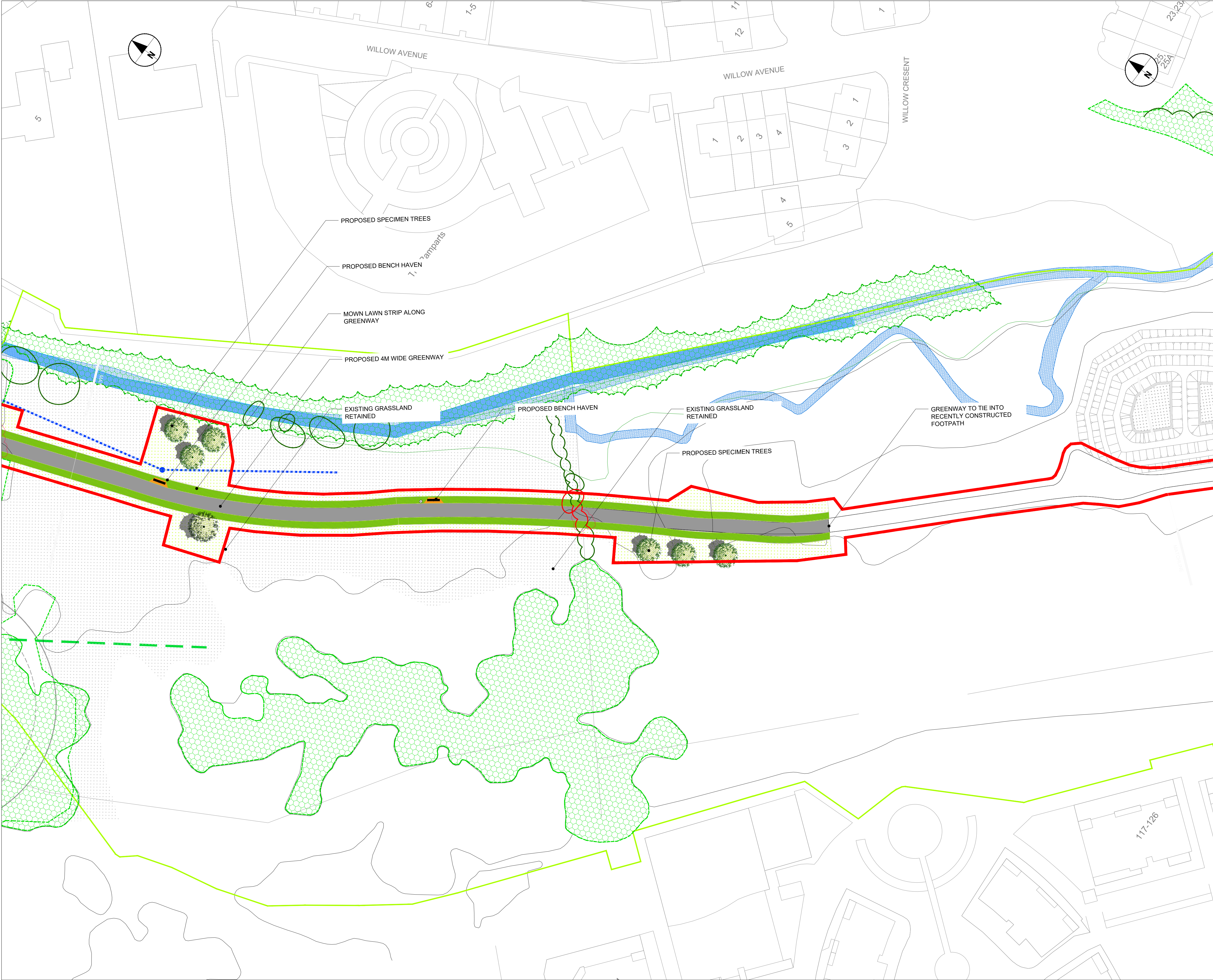


ISO A1 594mm x 841mm  
Checked: ROSS LOUGHNANE Approved: ED FRAMPTON  
Designer: DAVID GALLAGHER  
Project Management Initials:  
Last saved by: CULLETONK(2022.03.14), Last Plotted: 2022.03.14  
Filename: Z:\UK\IEDBL2\JOS\PR-402643\_CHERRYWOOD\_GREEN\_NETWORK\K900\_CAD\_GIS910\_CAD\05\MODELS\GREENWAY\_LAS\SHEET\SA02643-SHT-20-L-1000.DWG  
Printed on: % Post-Consumer Recycled Content Paper



This drawing has been prepared for the use of AECOM's client. It may not be used, modified, reproduced or relied upon by third parties, except as agreed by AECOM or as required by law. AECOM accepts no responsibility, and denies any liability whatsoever, to any party that uses or relies on this drawing without AECOM's express written consent. All measurements must be obtained from the stated dimensions.



**PROJECT**  
**CHERRYWOOD  
GREEN ROUTES  
NETWORK**



**CONSULTANT**  
AECOM Ireland Limited  
24 Lower Hatch Street  
Dublin 2, D02 TY88  
01 676 3671 tel  
www.aecom.com/ie

- KEY**
- EXISTING SPECIMEN TREES RETAINED
  - EXISTING SPECIMEN TREES REMOVED
  - EXISTING WOODLAND RETAINED
  - EXISTING VEGETATION TRIMMED/REMOVED
  - EXISTING GRASSLAND RETAINED
  - PROPOSED TREES**
    - PROPOSED SPECIMEN TREES
    - PROPOSED FEATURE TREES
  - PROPOSED SOFTWORKS:**
    - PROPOSED GRASSLAND PLANTING
    - AREAS TO REGENERATE
    - MOWN STRIP ALONG GREENWAY
    - PROPOSED WOODLAND PLANTING
  - PROPOSED HARDWORKS:**
    - ASPHALT TO GREENWAY
    - RESIN BOUND GRAVEL
    - LOOSE BOUND GRAVEL ON GEOCELLS
    - SMALL UNIT PAVING BAND TO ACCESS POINT
  - PROPOSED FURNITURE:**
    - SEATING TO BENCH HAVEN
    - CYCLE STAND TO BENCH HAVEN
    - WAYFINDING SIGNAGE TO ACCESS POINT
  - OTHER**
    - CHERRYWOOD SDZ PLANNING SCHEME
    - GREEN INFRASTRUCTURE ZONED LANDS

**ISSUE/REVISION**

-	March 2022	ISSUE FOR PART 8
I/R	DATE	DESCRIPTION

**PROJECT NUMBER**  
60599677

0 12.5 25 m  
1:500 @A1

**SHEET TITLE**  
GENERAL ARRANGEMENT PLAN  
Sheet 7 of 11

**SHEET NUMBER**  
60599677-SHT-20-L-1007