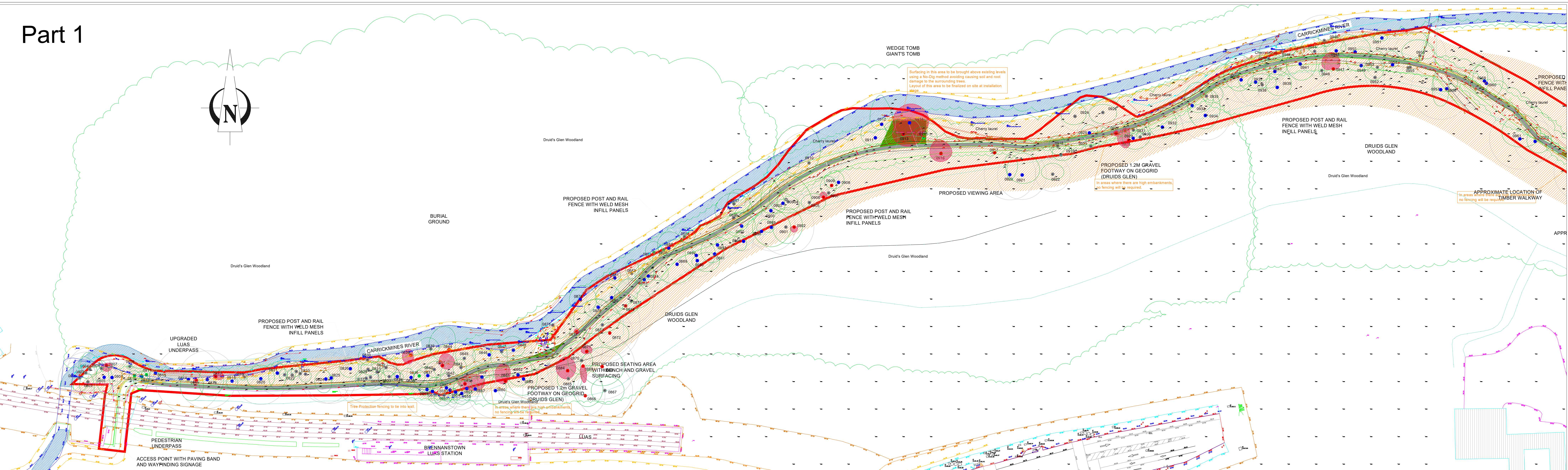
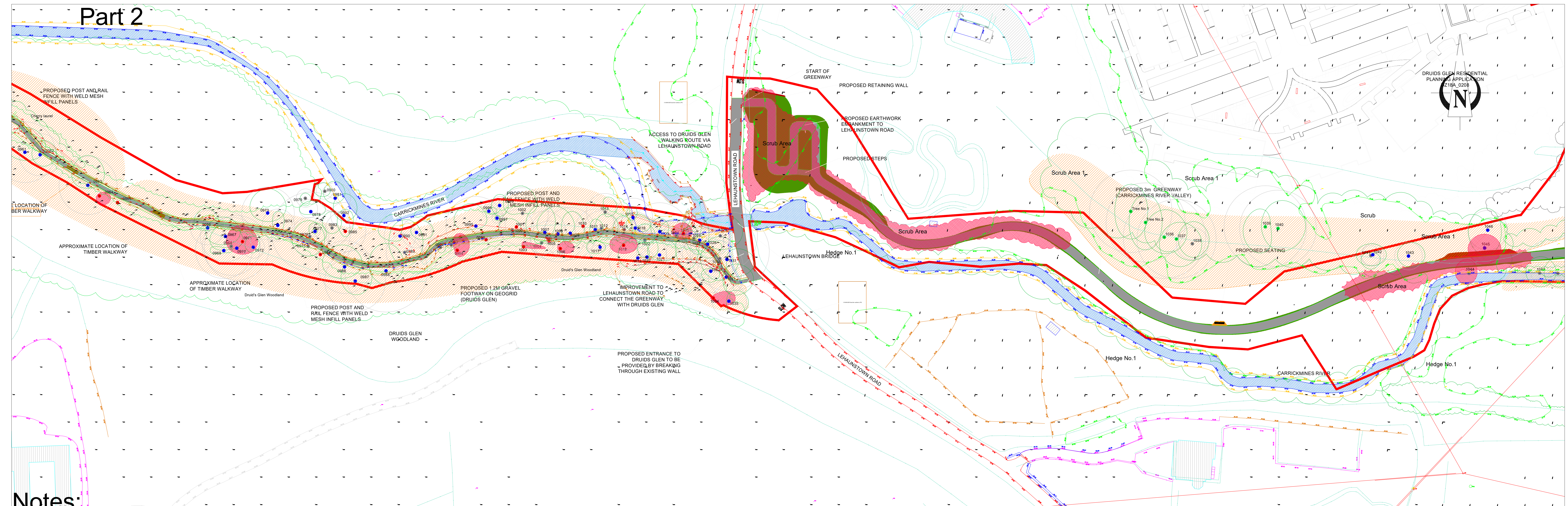


Part 1

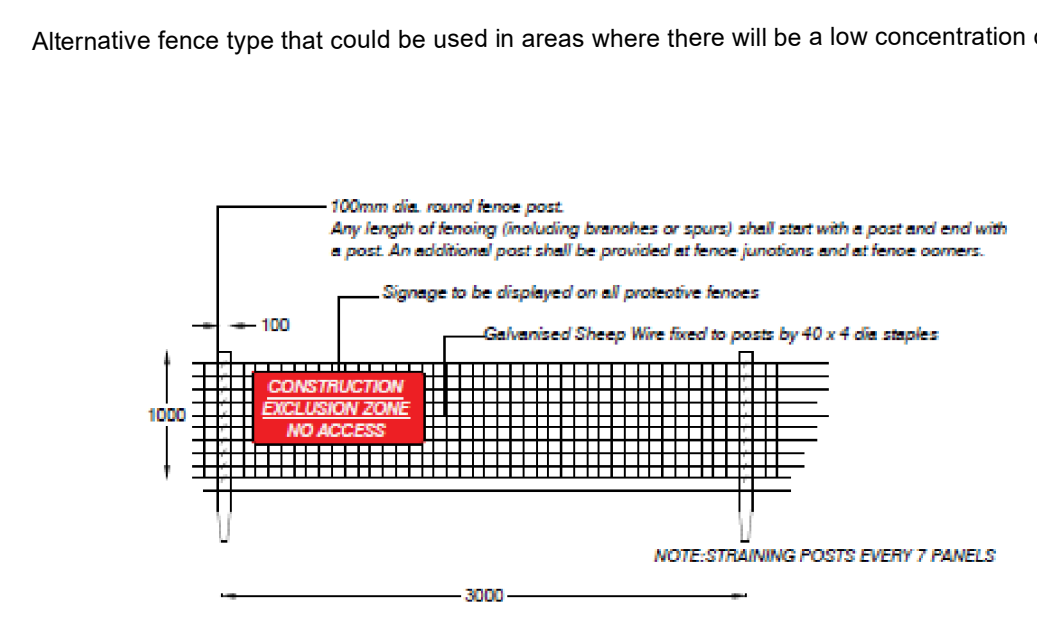
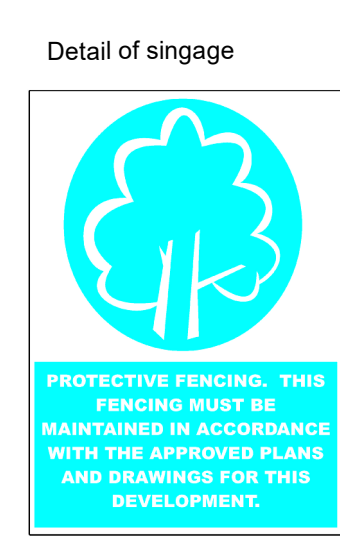
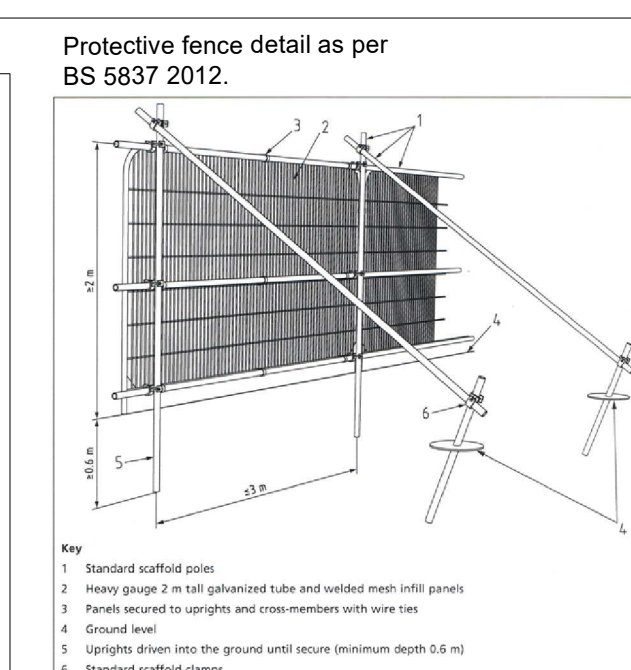
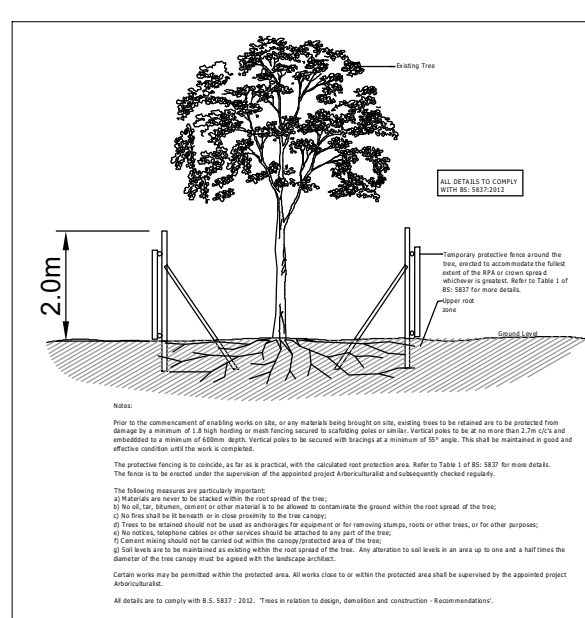
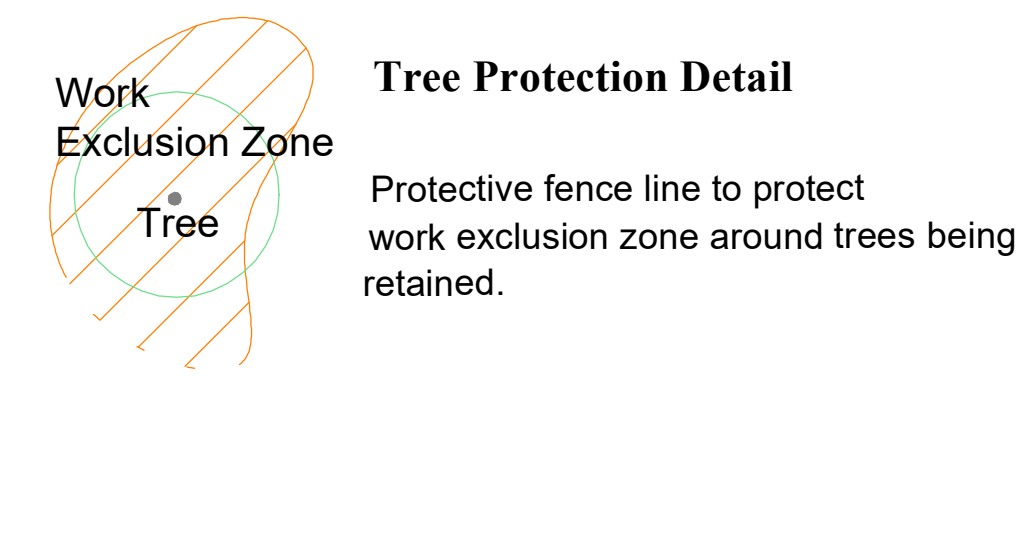


Part 2



Notes:

| Works | Schedule |
|--------------------------------|--|
| Site Meeting | Prior to any works commencing. |
| Tree Works – Felling & Pruning | Prior to any construction works commencing. |
| Tree Protection | After tree removal and pruning is complete and prior to any construction works commencing. The erection and removal of the protective fencing is to be scheduled in accordance with the phasing of the construction works. |
| Site Monitoring | Ongoing throughout the construction works. |
| Removal of Tree P protection | Once all the main construction works are completed and in order to incorporate the area into the finished development. |
| Tree Review and Certification | Once all works are complete. |

[illegible]

| | | |
|--|--|--------------------------|
| <h1 style="text-align: center;">ARBORIST ASSOCIATES LTD.</h1> <p style="text-align: center;">94 BALLYVAUGHN COTTAGES, ENNISKERRY, CO. WICKLOW</p> <p style="text-align: center;">TEL: 01-2742011 / 087-2629589</p> | | |
| <p>TITLE: Tree Protection Plan</p> | | |
| <p>Site: Cherrywood Linear Park Greenway</p> | | |
| <p>DATE:</p> | <p>Dwg No. CW0002 Parts 1 & 2.</p> | <p>Scale: 1:500 @ A0</p> |