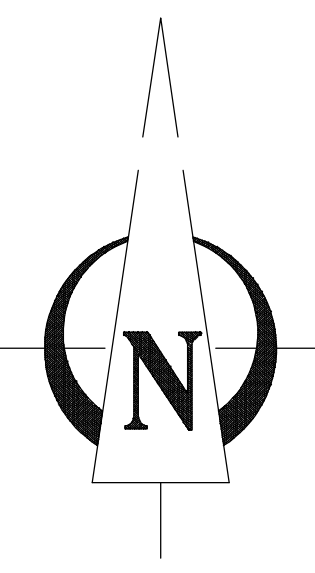
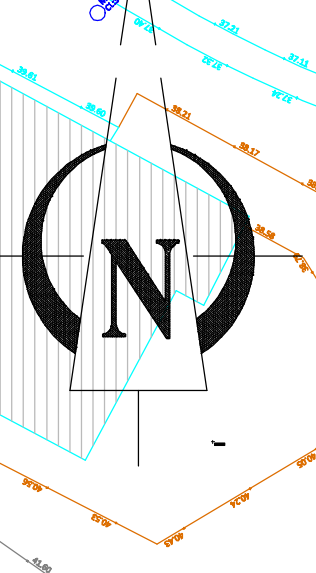


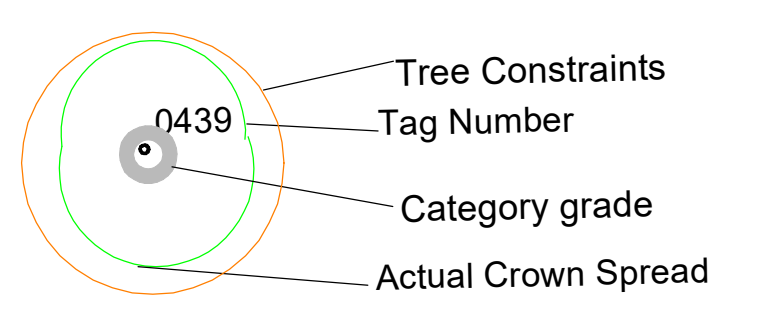
Part 6



Part 7



Notes:



BS5837: 2012 - Category Retention Rating

- Category U Trees-**  
Trees in such a condition that any existing value would be lost within 10 years or being recommended for removal sound arboricultural practice.
  - Category A Trees**  
Trees of high quality/value with a min. of 40 years life expectancy.
  - Category B Trees**  
Trees of moderate quality/value with a min. of 20 years life expectancy.
  - Category C Trees**  
Trees of low quality/value with a min. of 10 years life expectancy.
- Sub Categories**  
1- Mainly Arboricultural values  
2- Mainly Landscape values  
3- Mainly cultural and conservation values.

**ARBORIST ASSOCIATES LTD.**  
94 BALLYBAWN COTTAGES, ENNISKERRY, CO. WICKLOW  
TEL: 01-2742011 / 087-2629589

**TITLE:** Tree Constraints Plan

**Site :** Cherrywood Linear Park Greenway

<b>DATE:</b>	Dwg No.CWG001 Parts 6 & 7	Scale 1:500 @ A0
--------------	------------------------------	------------------