

LIVING STREETS



Public Realm Improvements
Blackrock Village Dun Laoghaire

Placemaking + Design Principles



A Necklace of High Quality Spaces

A sequence of high quality space to connect and draw visitors, residents and workers from the seafront to the center crafting a memorable and enjoyable experience. Materials informed by works at the Metals from consistency.



Stop, Sit, Stay

The 12 quality criteria to protect against traffic, crime and unpleasant sensory experiences, to feel safe and secure.

To create comfortable opportunities to walk, sit, stay, stand, see, chat, listen, play and exercise.

To facilitate enjoyment through scale, micro-climate and detailing



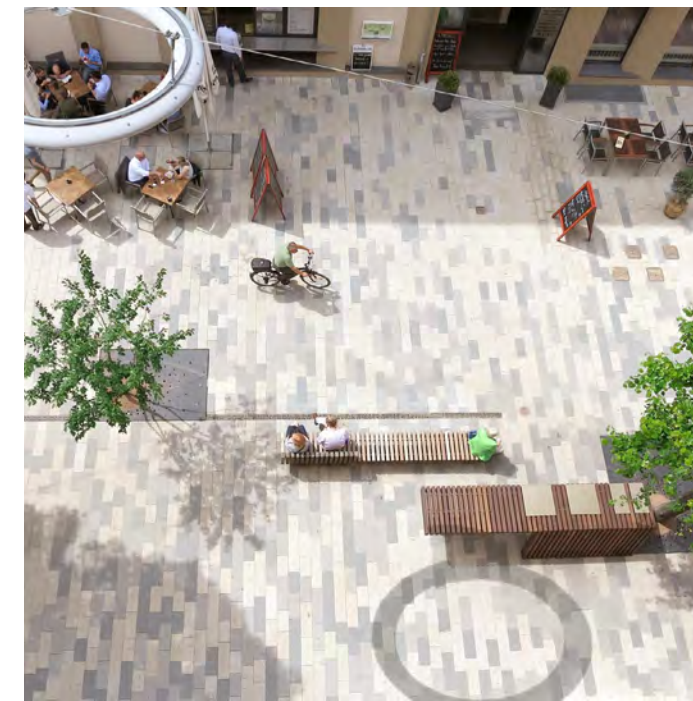
Active + Happy Streetscapes

The creation of attractive, accessible, navigable, livable, socially / economically active streetscapes.



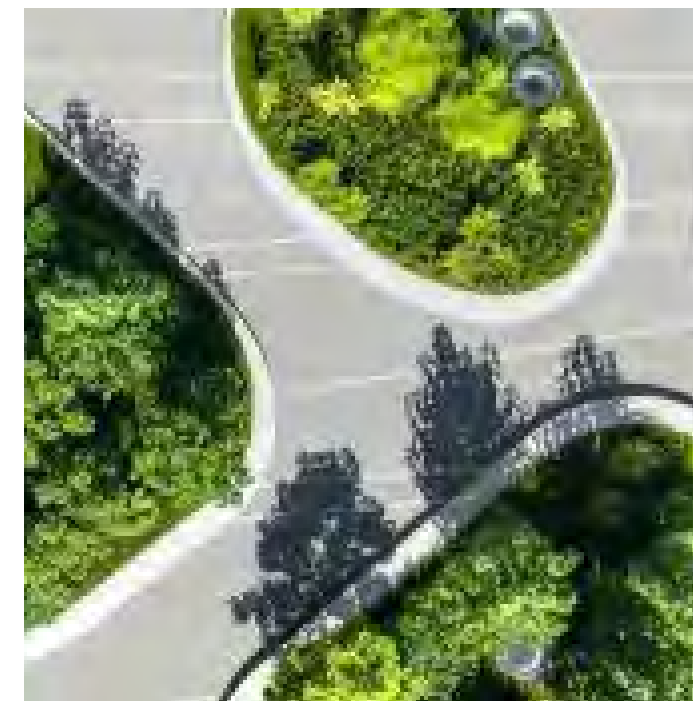
Authenticity

The idea of authenticity is important because it helps to preserve the cultural heritage and history of a place, and provides a sense of connection to the past for current and future generations.



Beauty

Beauty in landscape architecture can have a significant impact on people, as beautiful spaces can evoke emotions and create memorable experiences. This can be achieved through a variety of means, including the use of proportion, form, color, texture, and light. Additionally, beauty in architecture can also contribute to a sense of place and identity, as it helps to define and reflect the character and values of a community.



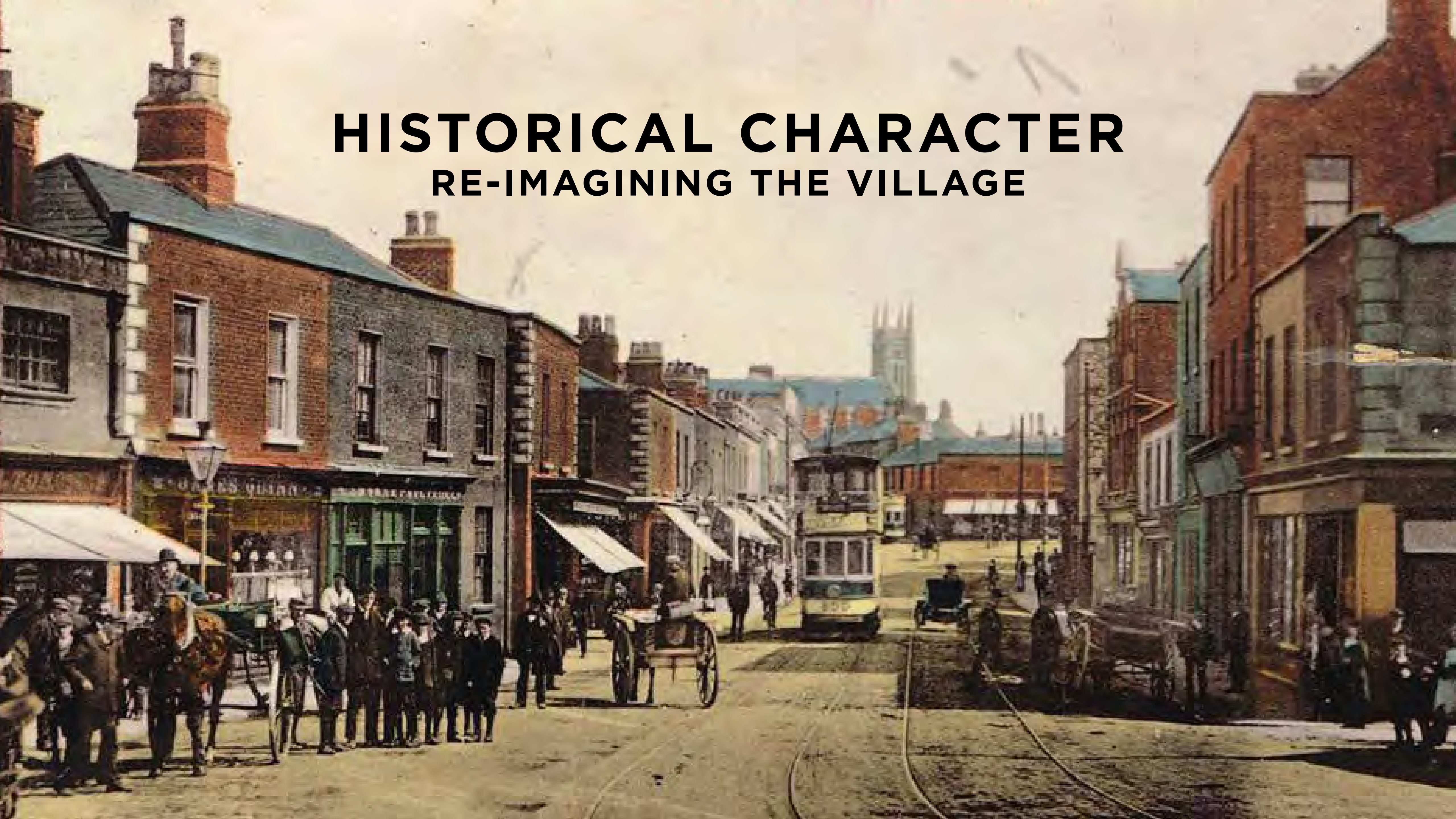
Generosity

A space is considered generous if it provides for the needs and well-being of its users, and if it creates opportunities for interaction, community, and connection. This involves designing spaces that are accessible, comfortable, and welcoming, and that provide for the needs of diverse users.

Generosity in landscape architecture can be seen in a variety of ways, such as the provision of abundant natural light, the creation of welcoming public spaces, or the integration of green spaces and nature into the design. A generous space can also be one that is flexible and adaptable, and that can accommodate a range of activities and uses over time.

HISTORICAL CHARACTER

RE-IMAGINING THE VILLAGE



#1. AUTHENTICITY

#2. LIFE ON THE STREETS

#3. CELEBRATE THE SPACE



ARS DEN. 42

DEM

HASPER

#1. AUTHENTICITY

AUTHENTICITY & CONTEXT



AUTHENTICITY & HERITAGE



AUTHENTICITY & MEMORY



NEVER FORGET WHERE YOU COME FROM



AUTHENTICITY
THROUGH THE USE OF TIMELESS MATERIALS



#2. LIFE ON THE STREET

WHAT MAKES A GREAT STREET?



**SOCIAL
SPACES**



**TIMELESS
MATERIALS**

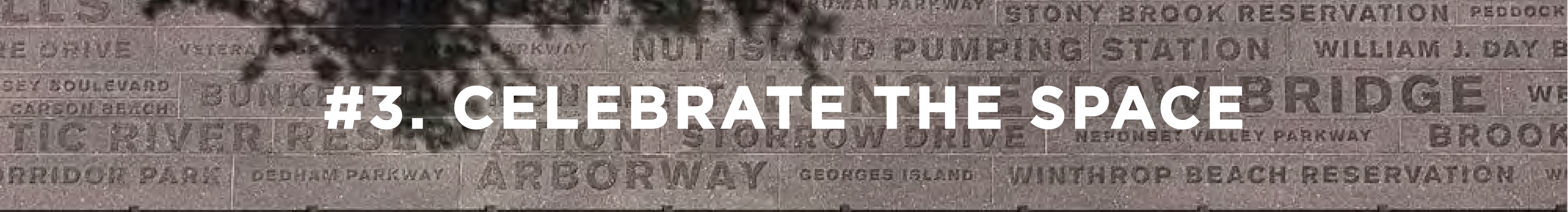


**ACTIVE
FRONTAGE**



LIFE ON THE STREET

STOP, SIT, STAY



#3. CELEBRATE THE SPACE



CONFORTABLE SPACES



SAFE SPACES

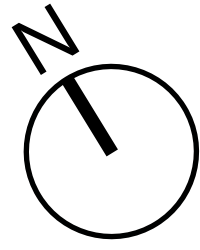


GREEN SPACES

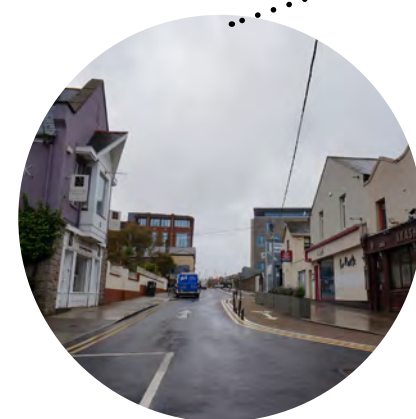


THE HUMAN SCALE

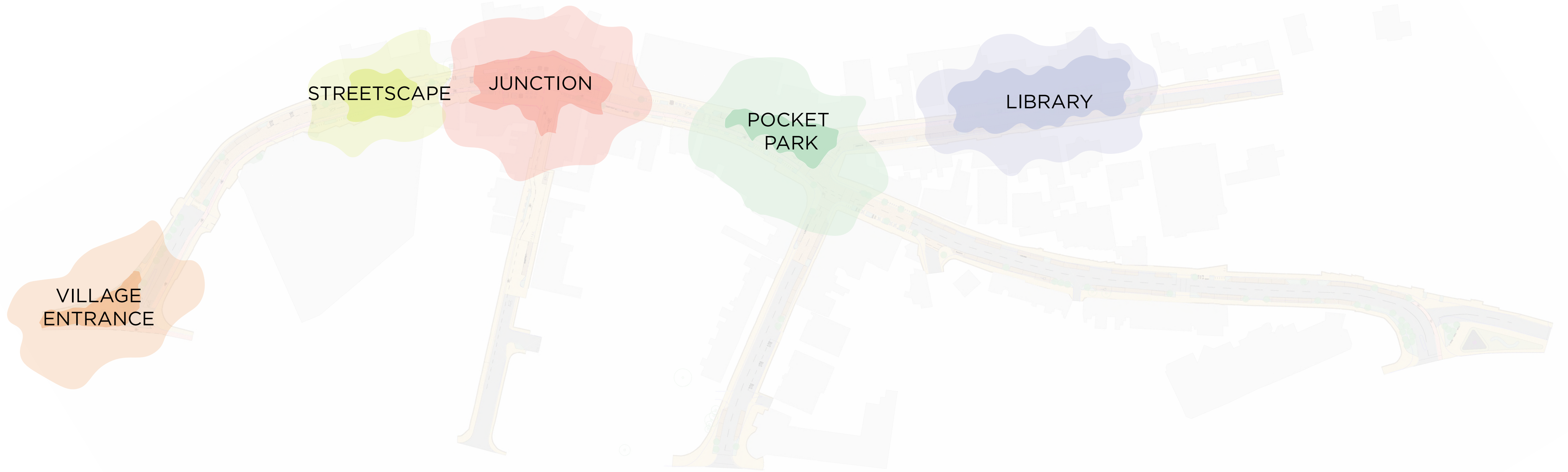
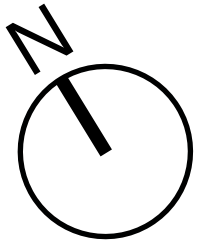
Building Uses



-  Retail
-  Cafes, Pubs, Restaurants
-  Services
-  Residential
-  Education, Church, Hospital
-  Vacant



Nodes



VILLAGE
ENTRANCE

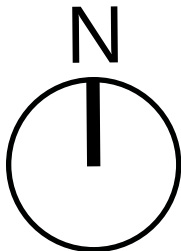
STREETSCAPE

JUNCTION

POCKET
PARK

LIBRARY

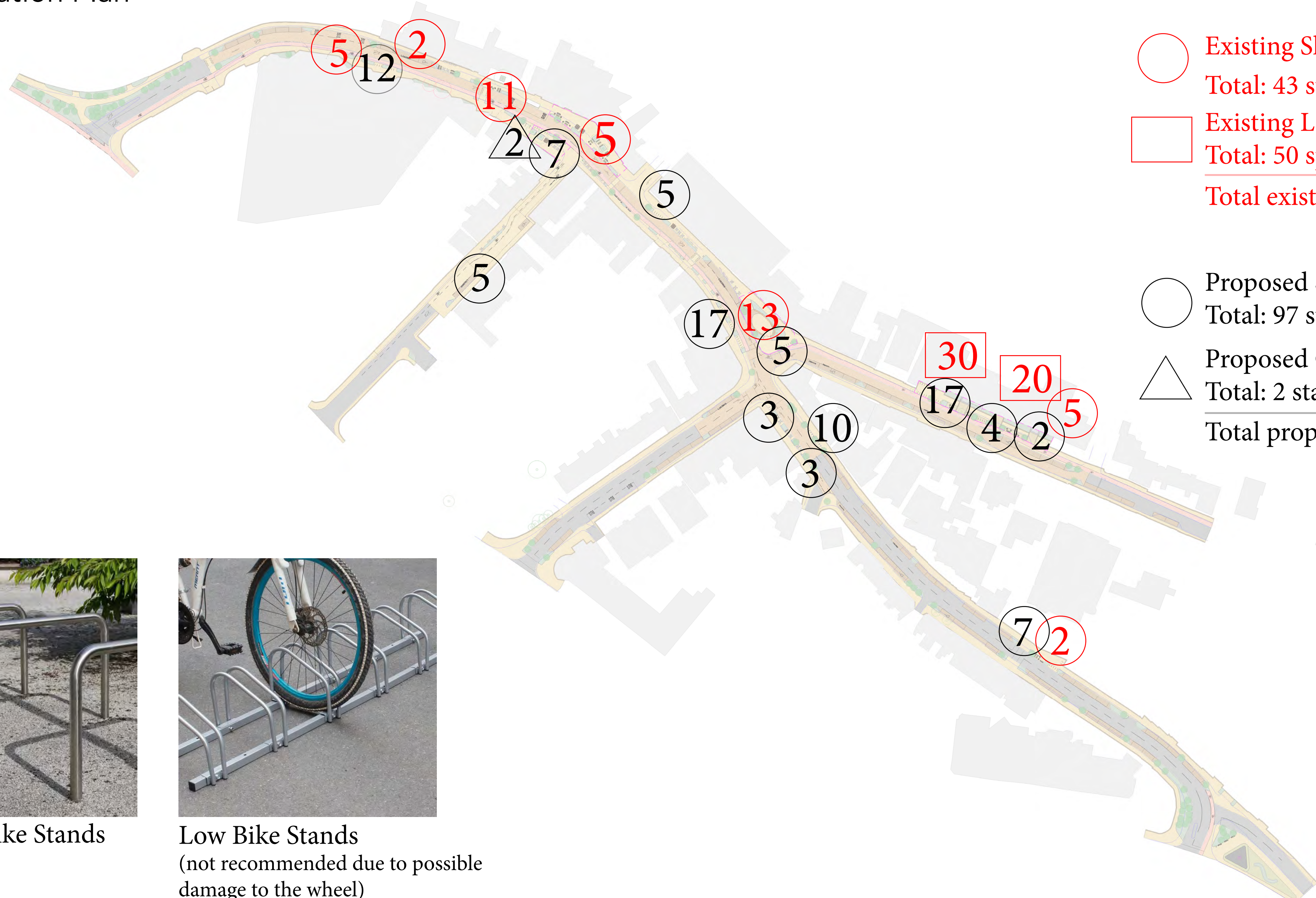
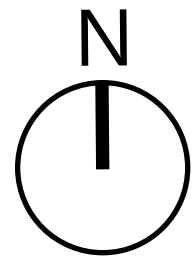
Landscape Masterplan



LEGEND

- P1 - GRANITE PAVING FLAGS (BUFF COLOUR TO FOOTPATH)
- P2 - HIGH FRICTION SURFACE (RED COLOUR TO CYCLE LANE)
- P3 - HIGH FRICTION SURFACE
- P4 - BLACK TARMAC
- P5 - GRANITE SETS TO PARKING BASE
- GRASS
- PLANTING
- EXISTING TREES TO BE RETAINED
- PROPOSED TREES
- TREES TO BE FELLED
- E1 - RAISED KERB
- E2 - FLUSH KERB
- F1 - FIXED FURNITURE (PICNIC TABLE)
- F1 - FIXED FURNITURE (TABLE AND CHAIR)
- F1 - FIXED FURNITURE (BENCHES)
- F2 - MOVABLE FURNITURE (GRAPHIC TO INDICATE SPACE AVAILABLE)
- LITTER BIN
- SHEFFIELD BIKE STAND
- PROPOSED ART INSTALLATION
- EXISTING ART INSTALLATION
- EXISTING KERBLINE
- AREAS OF FEATURE PAVING (PAVING TO BE DETERMINED)

Bike Location Plan



○ Existing Sheffield Bike Stands
 Total: 43 stands (86 spaces)
□ Existing Low Bike Stands
 Total: 50 spaces

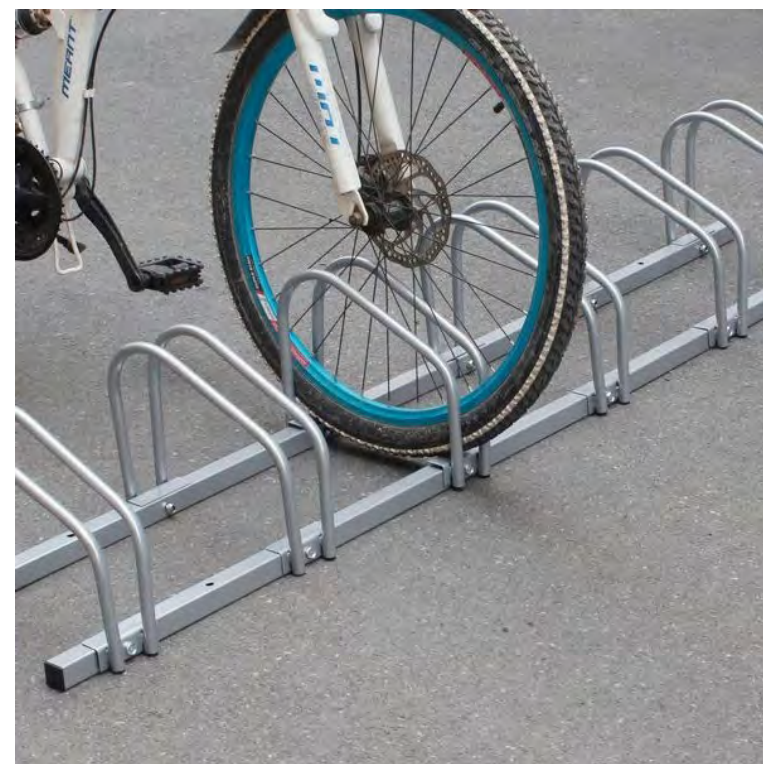
 Total existing spaces: 136

○ Proposed Sheffield Bike Stands
 Total: 97 stands (194 spaces)
△ Proposed Cargo Bike Stands
 Total: 2 stands (4 Spaces)

 Total proposed spaces: 198



Sheffield Bike Stands



Low Bike Stands
 (not recommended due to possible damage to the wheel)

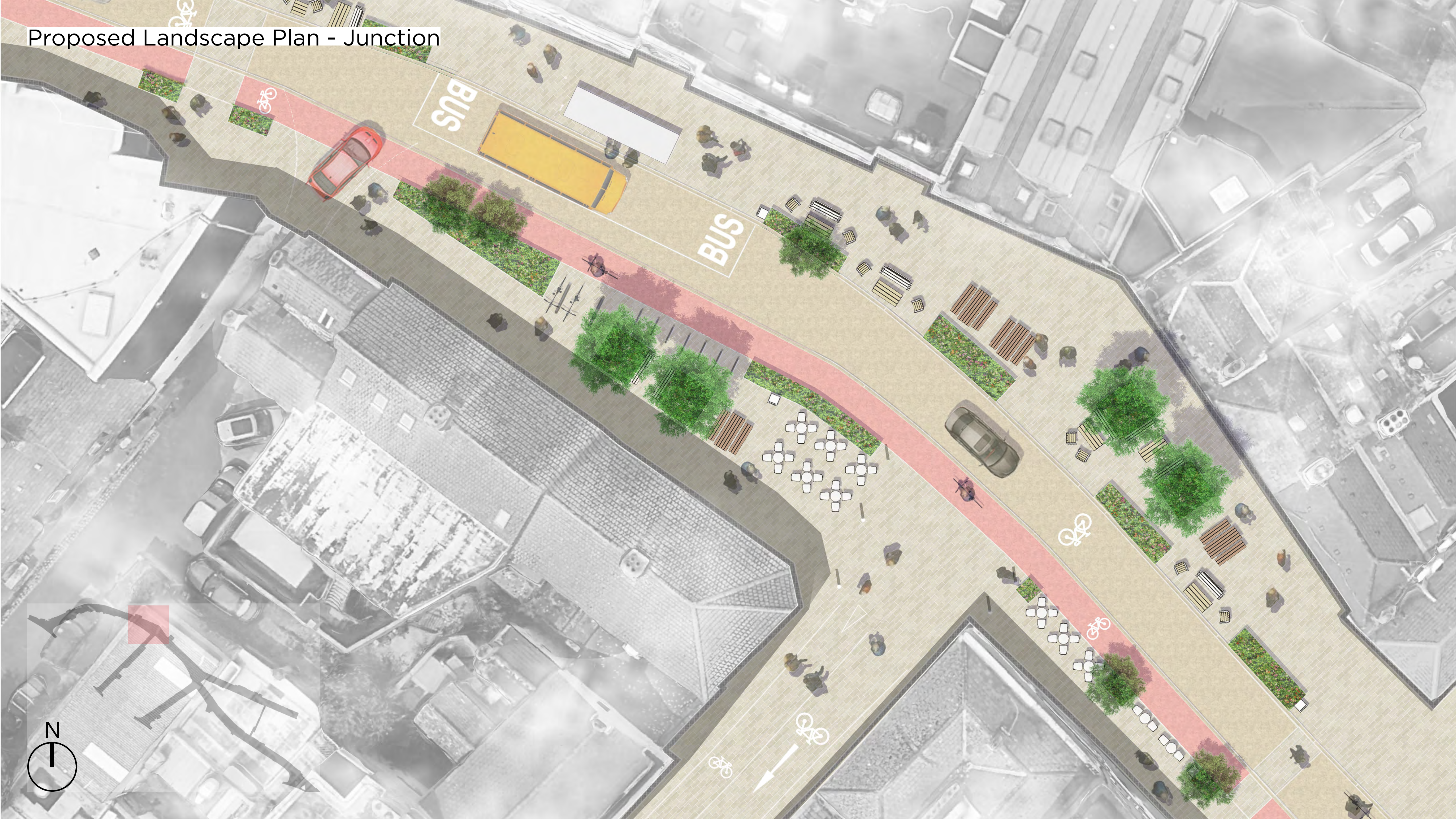
Proposed Landscape Plan - Village Entrance



Proposed Landscape Plan - Streetscape



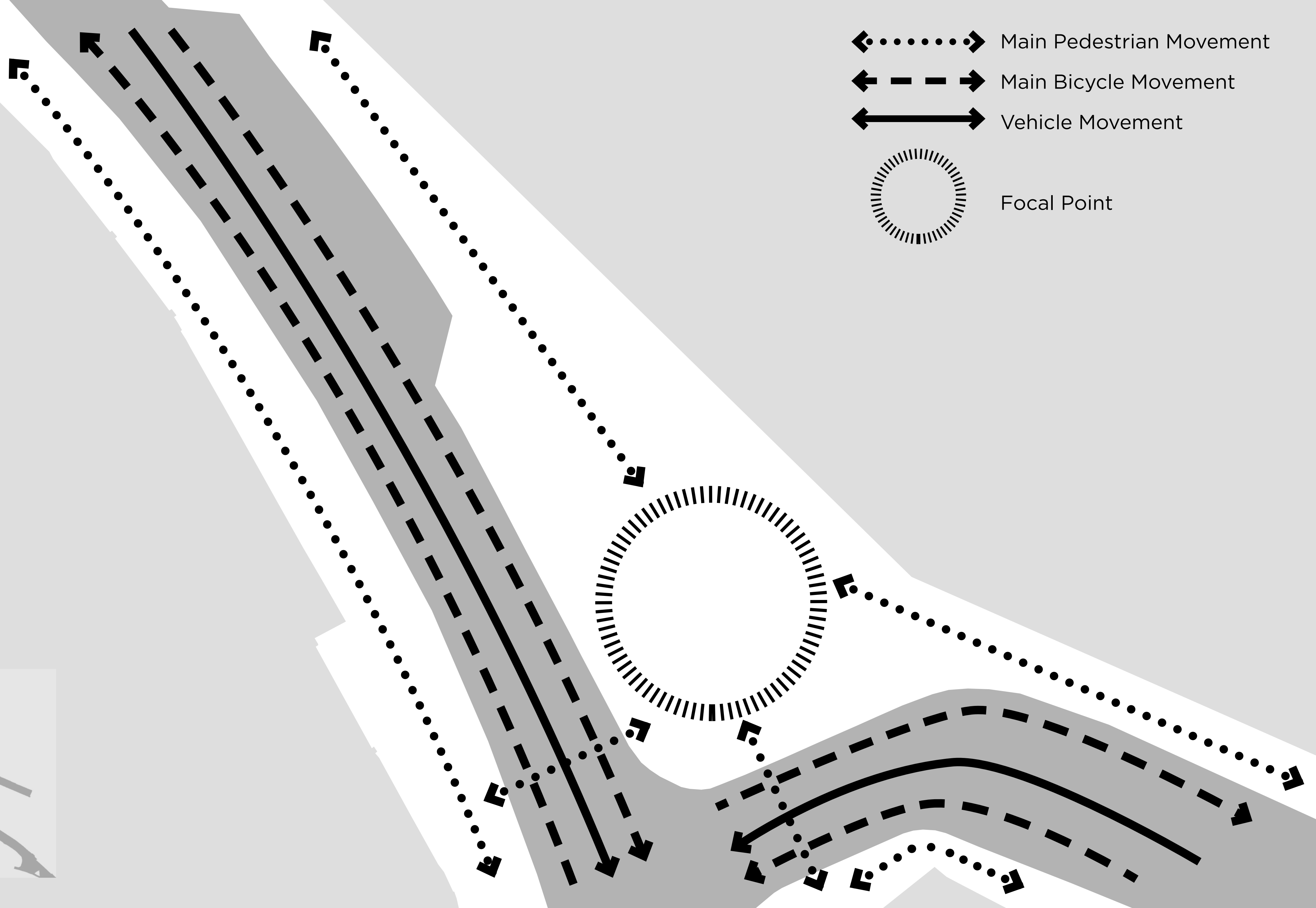
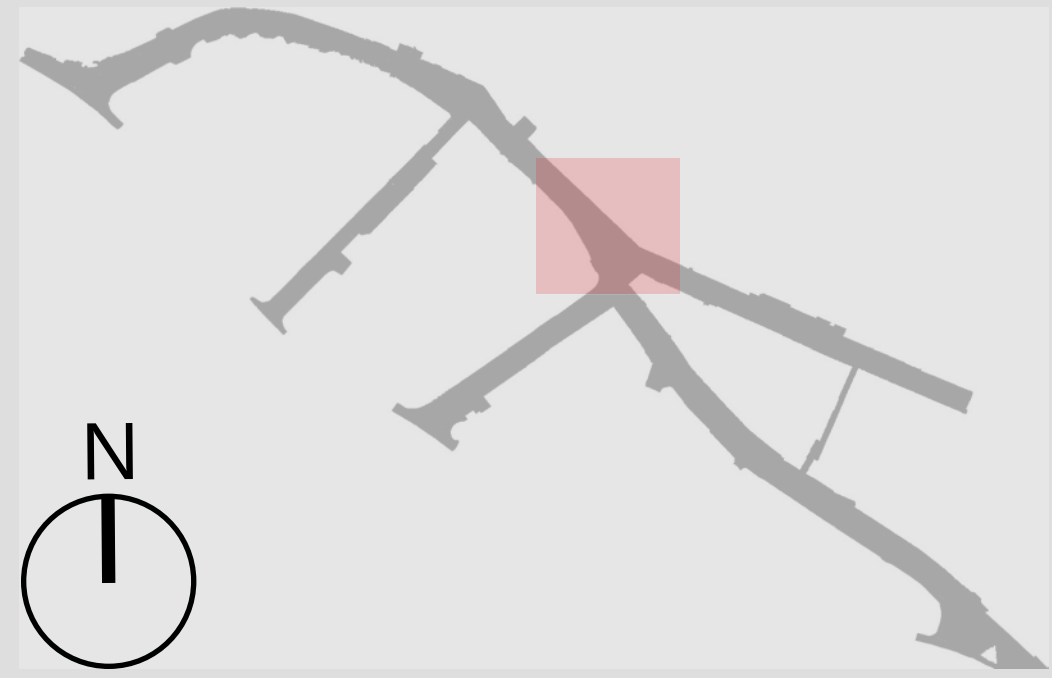
Proposed Landscape Plan - Junction



Proposed View - Junction



Pocket Park Diagram



Proposed Landscape Plan - Pocket Park



LOADING

LOADING

Pocket Park Design



Hedge + Planting
Creates Enclosure

Seating Edge
South Facing

Paving + Ramps + Railing
Buff Paving + Dark Grey Setts

Pocket Park
Axonometric View



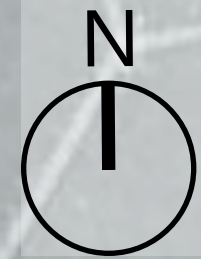
Proposed View - Pocket Park



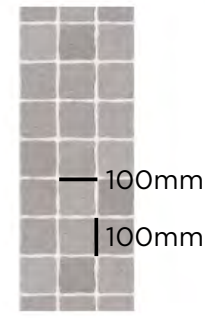
Proposed View - Pocket Park at Christmas



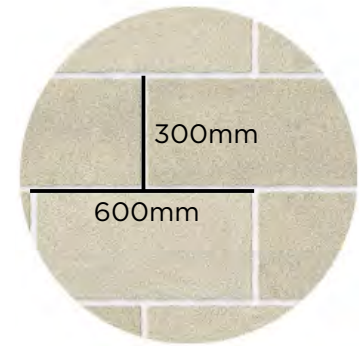
Proposed Landscape Plan - Library



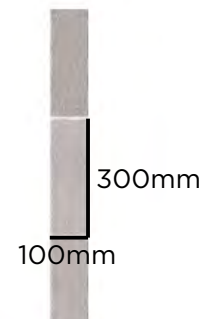
Typical Street Detail



1. 100mm x 100mm Dark Granite Paving Setts



2. 600mm x 300mm Buff Granite Paving



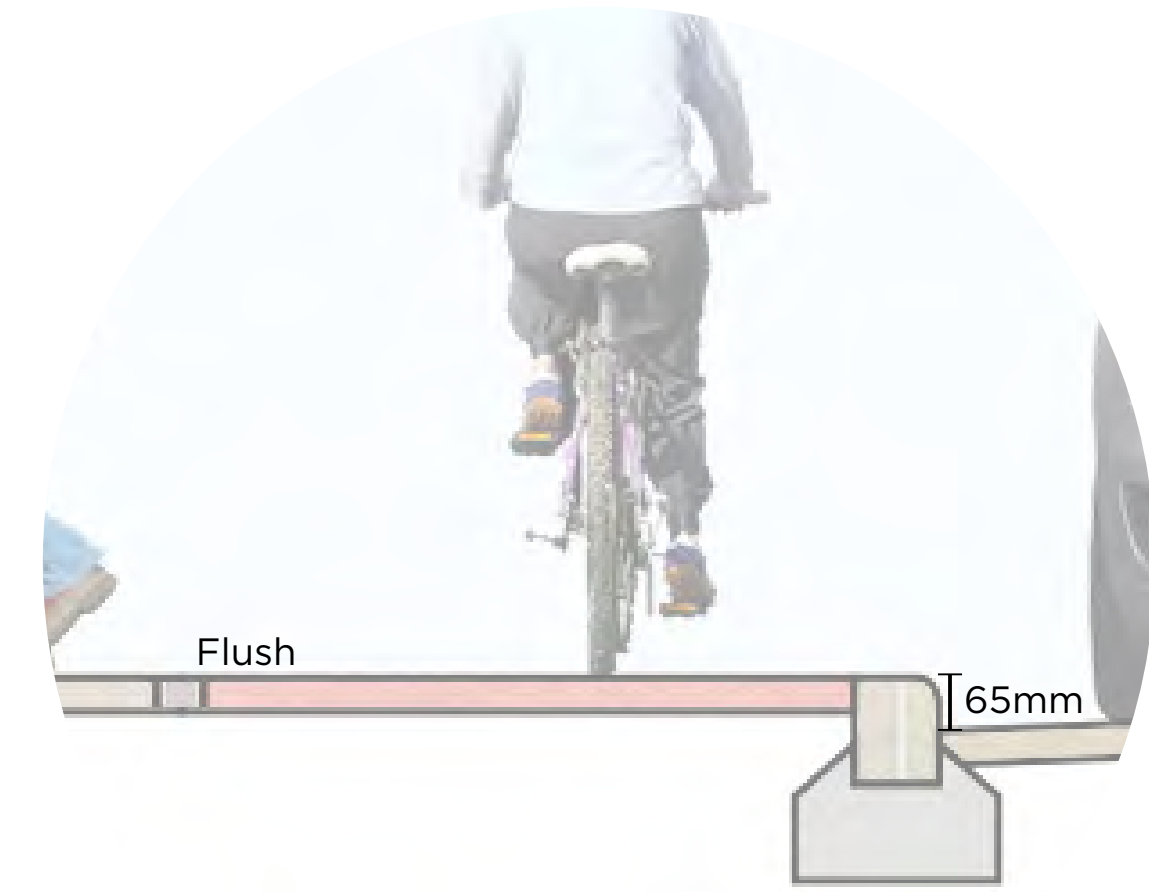
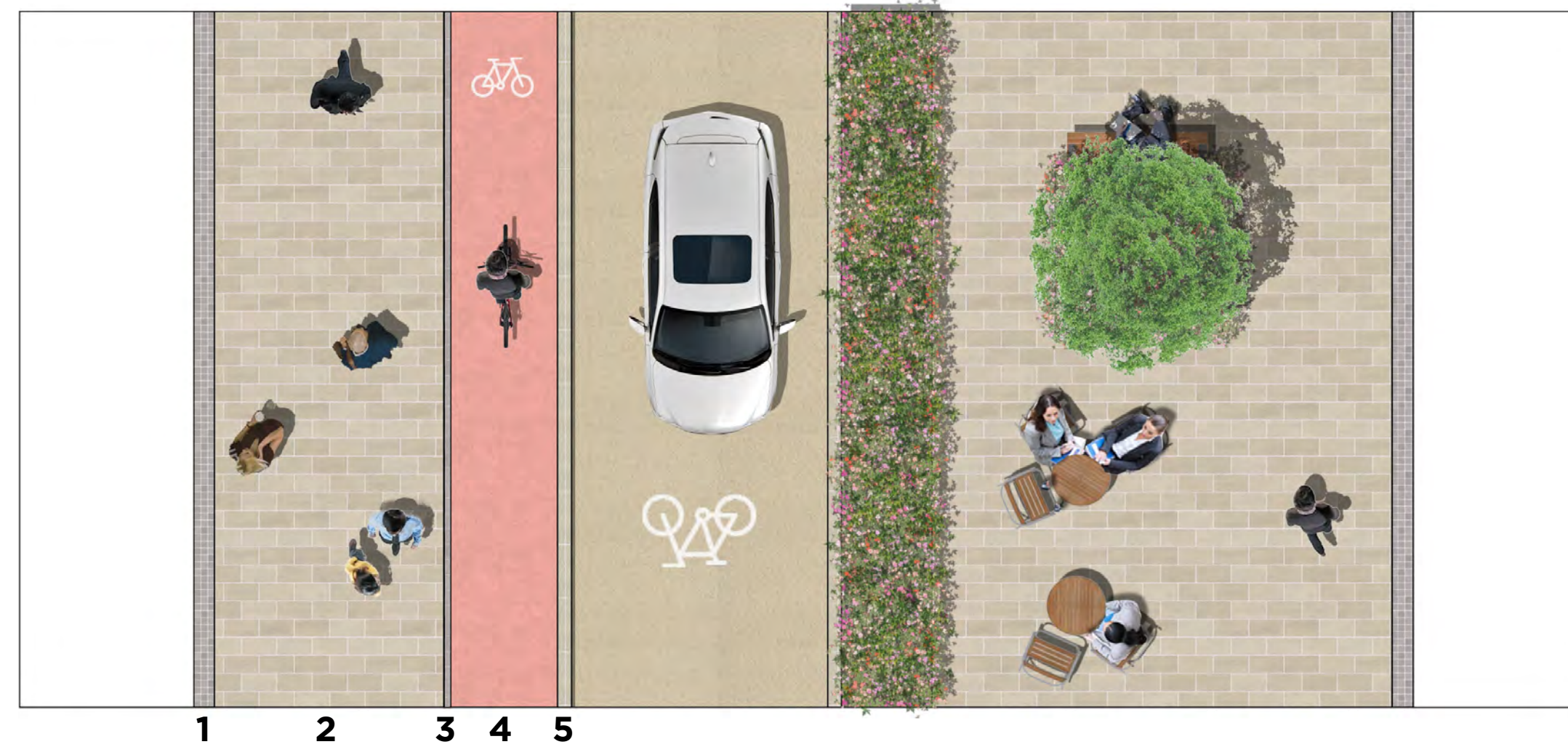
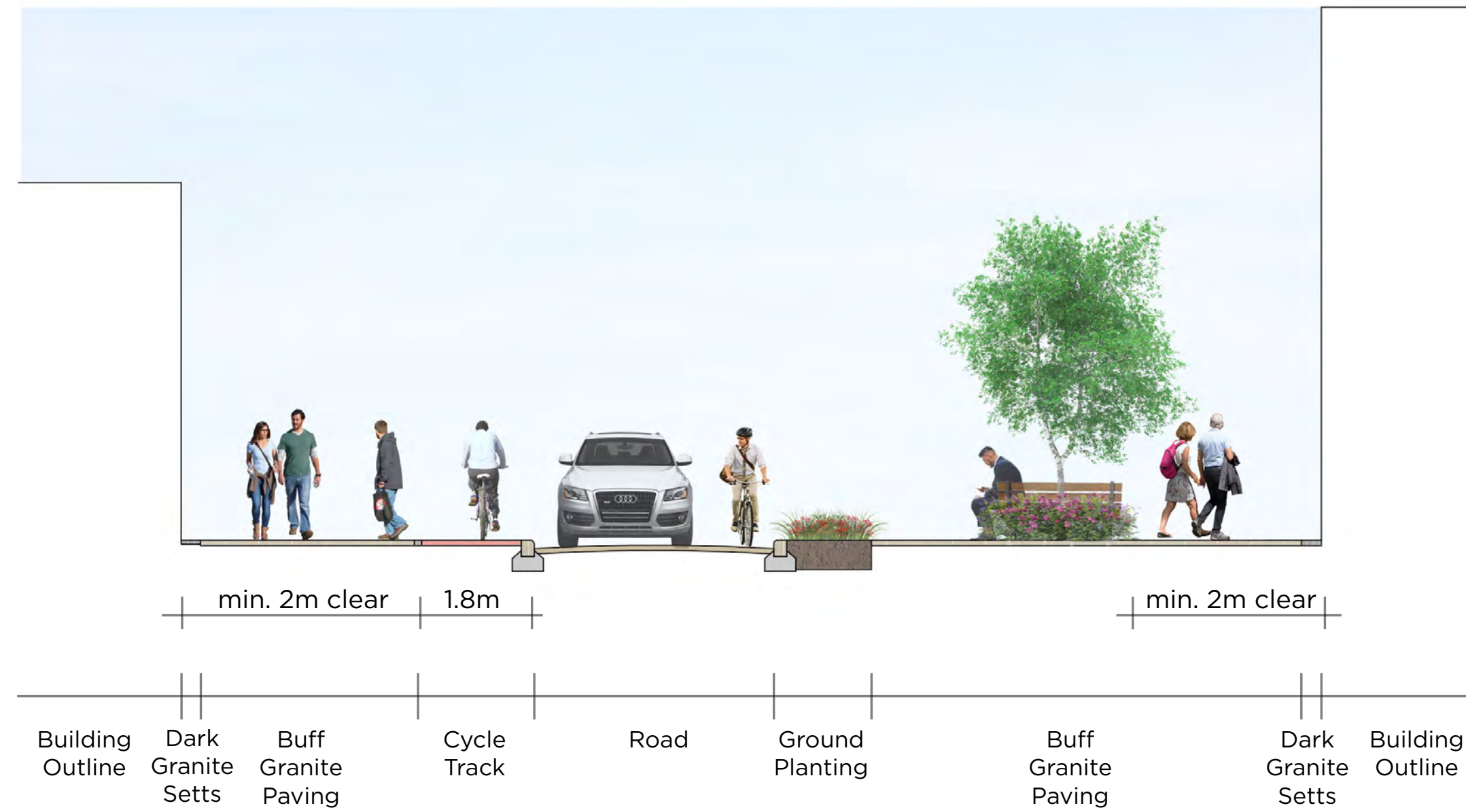
3. 300mm x 100mm Dark Granite Paving



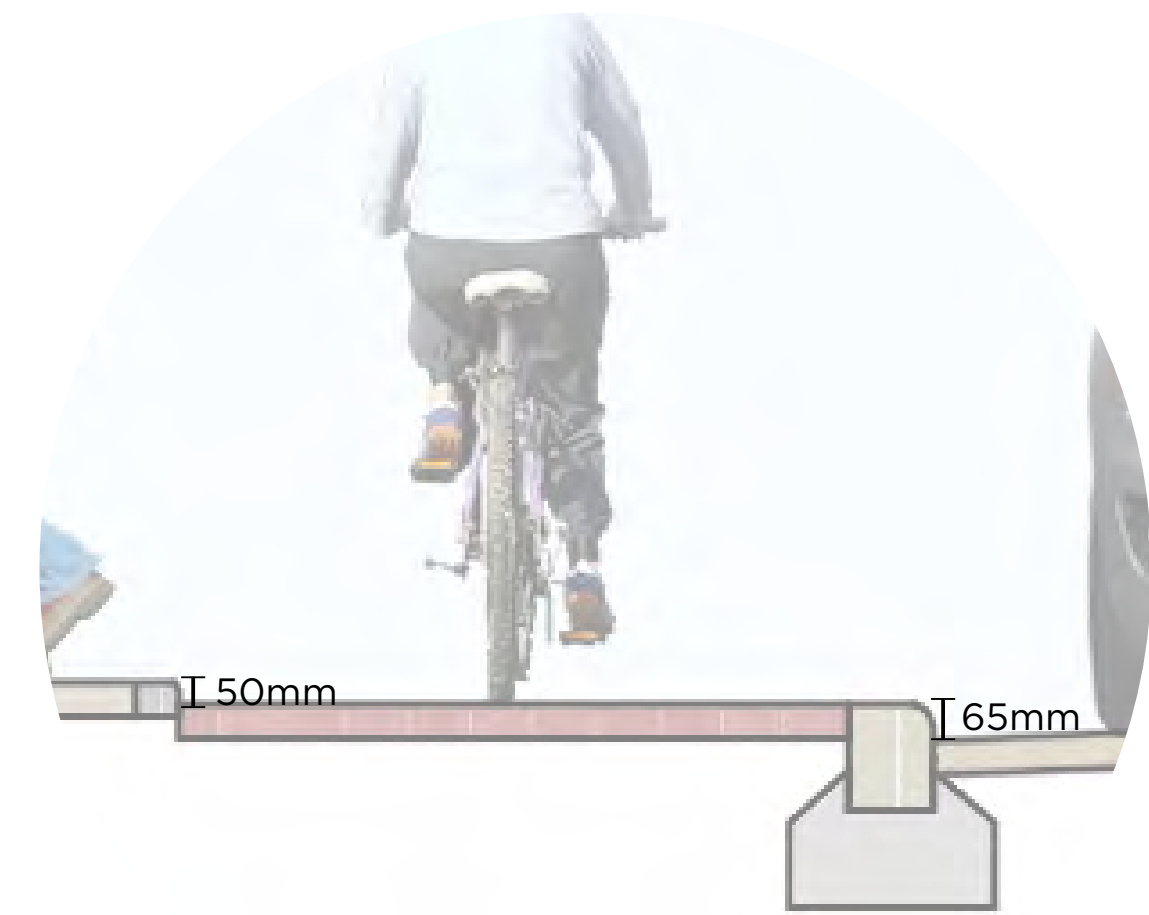
4. High Friction Surface (Colour Red)



5. 900mm x 200mm Buff Granite Kerb

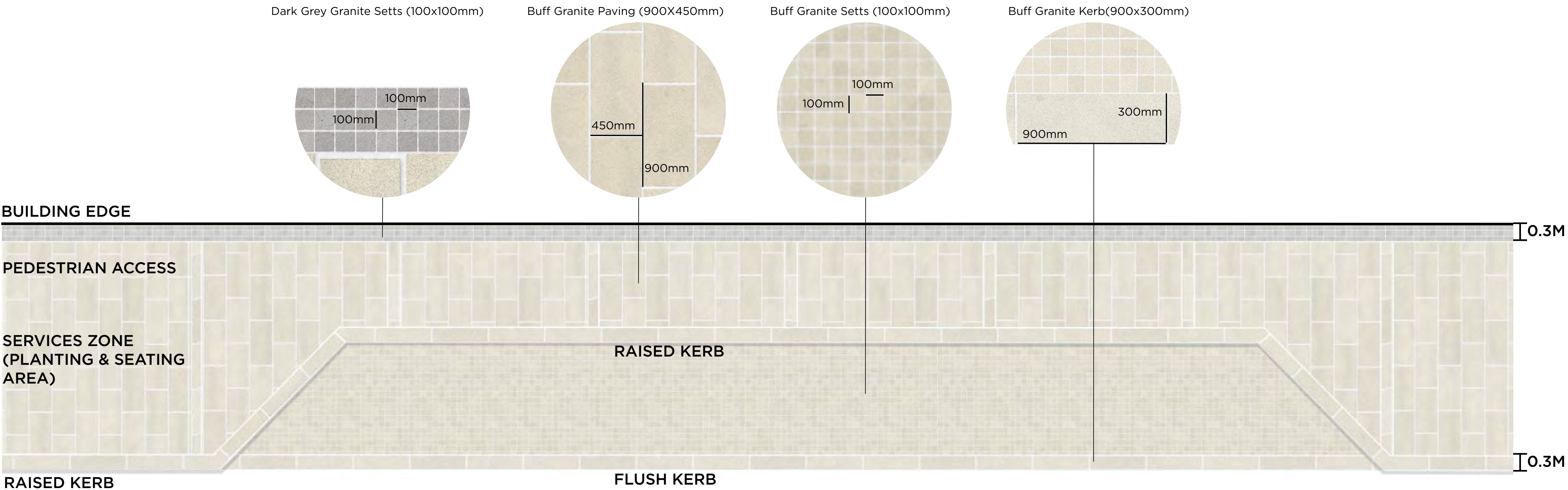


Option 1

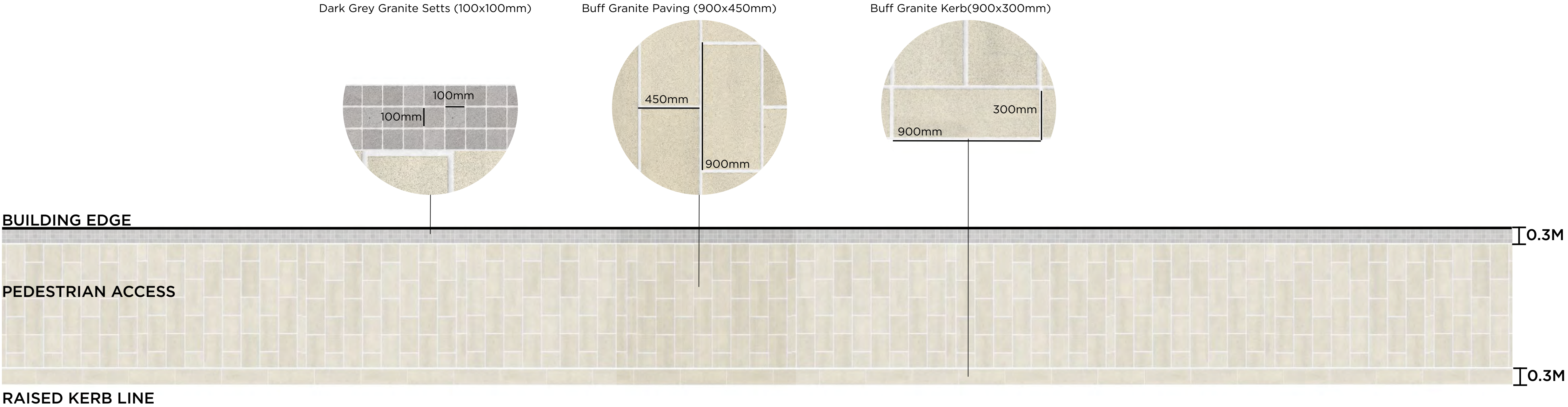


Option 2

Typical Paving Pattern Detail: Public Footpath



Typical Paving Pattern Detail: Public Footpath with Parking Bays



Hard Material Palette

PAVING SURFACE FINISH

Natural Stone	Granite Setts	Granite Setts	Granite Kerbs	High Friction Surface	High Friction Surface (Red Colour)	Asphalt
						
To all Primary Routes	To Building Edges	To Parking Bays	To Parking Bays	To Raised Tables	To Cycle Lane	To Vehicular Routes

STREET FURNITURE

Picnic Table	Picnic Table	Benches	Table and Chairs	Steel Edging	Granite Edging	Litter Bins	Bike Stands	Water Fountain
								
Preferred Option	Alternative	Preferred Option	Alternative	To Low Level Planters	To Raised Planters	To Pedestrian areas	To Bike Parking	Outdoor Drinking

Soft Material Palette

STREET TREES

SMALL TREES

Field Maple

Birch

Bird Cherry

Mountain Ash

Hazel

Willow

Guelder rose

Juneberry



Native Tree

Native Tree

Native Tree

Native Tree

Native Tree

Native Tree

Native Tree

Ornamental Tree

LOW MAINTENANCE NECTAR AND POLLEN RICH SHRUB MIX, LOW HEIGHT 0.5 - 1m

Bugleherb

Heart-leaf bergenia

Tibetan cotoneaster 'Decorus'

Mrs Robb's bonnet

Hebe 'Midsummer Beauty'

Helleborus foetidus

English lavender

Oregon grape 'Apollo'

Sweet box



Evergreen

Evergreen

Evergreen

Evergreen

Evergreen

Evergreen

Evergreen

Evergreen

Evergreen