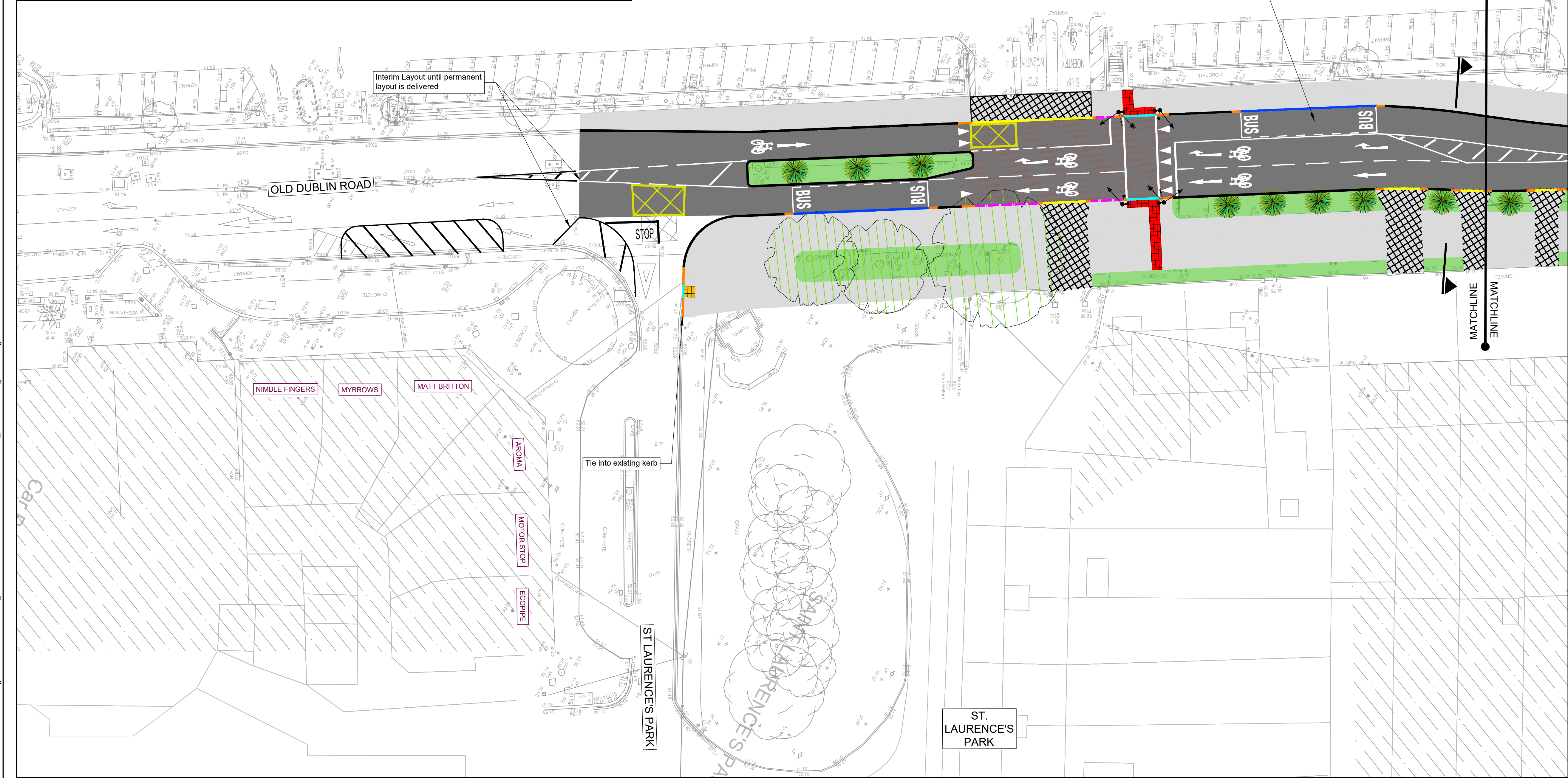
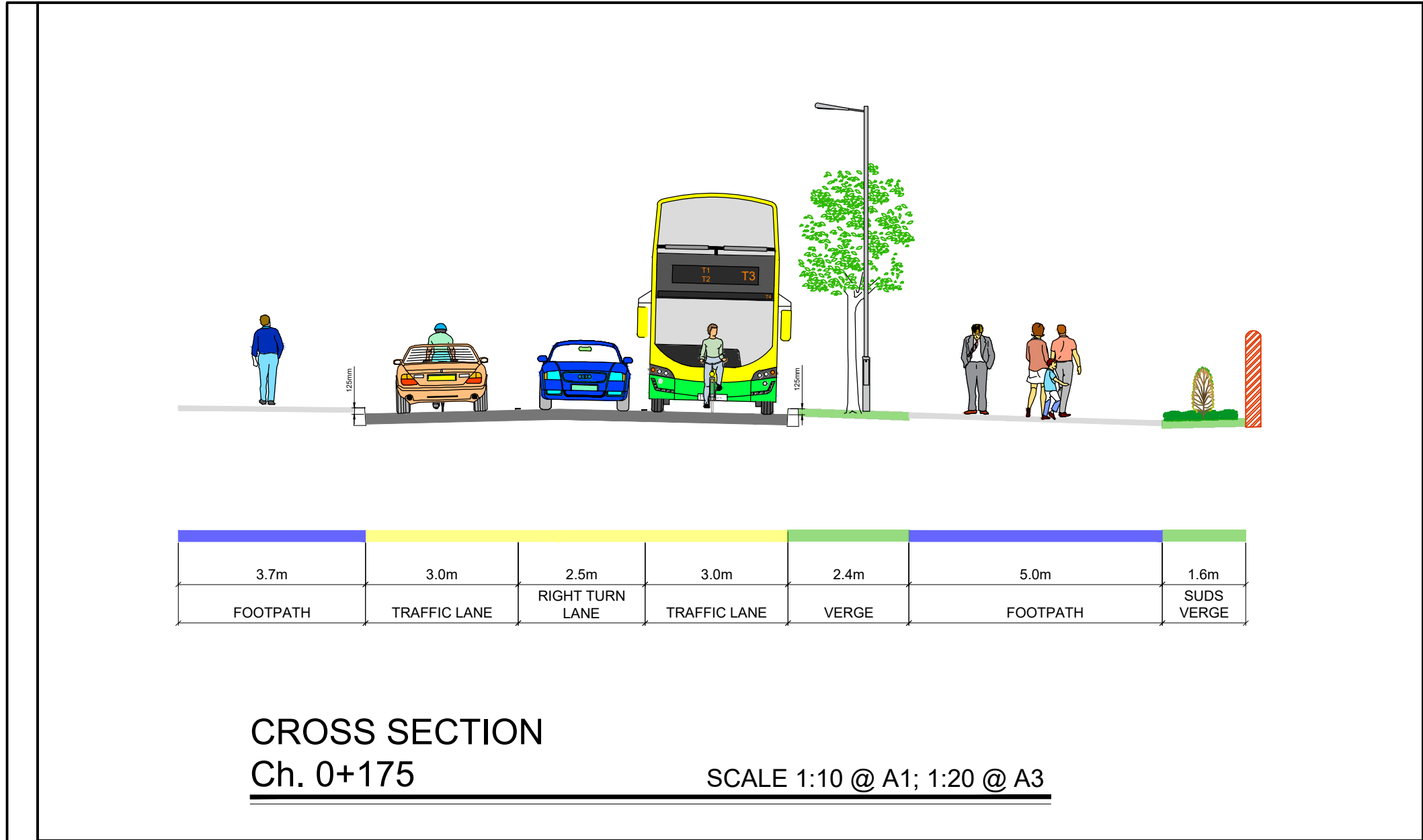


R:\MDT0907 - Stillorgan Village Movement Scheme\8.0 Drawings\02-DB-DR-Z-GA0000-0003 - General Arrangement.dwg



NOTES:

1. All dimensions are in millimeters unless indicated otherwise.
2. This drawing is only to be used for the Design Element identified in the title box. All other information shown on the drawing is to be considered indicative only.

LEGEND:

Surfaces:

- Pavement Carriageway
- Pavement Carriageway - Raised Table
- Footpath
- Light-weight Footpath at Vehicular Entrance
- Red Tactile Paving at Controlled Crossing
- Buff Tactile Paving at Uncontrolled Crossing

Landscaping:

- Verge - Potential for Ground Cover
- Proposed Tree
- Existing Tree to be Retained

Kerbs:

- 125mm Upstand Kerb
- 50mm Upstand Kerb
- 160mm Upstand Bus Boarding Kerb
- 0mm - 6mm max. Upstand Kerb at Raised Table Level
- Transition Kerb
- 25mm Upstand Vehicular Entrance Kerb

General Notes

- (i) Hard copies, dwf and pdf will form a controlled issue of the drawing. All other formats (dwg etc.) are deemed to be an uncontrolled issue and any work carried out based on these files is at the recipients own risk. RPS will not accept any responsibility for any errors from the use of these files, either by human error by the recipient, listing of the un-dimensioned measurements, compatibility with the recipients software, and any errors arising when these files are used to aid the recipients drawing production, or setting out on site.
- (ii) DO NOT SCALE, use figured dimensions only.
- (iii) This drawing is the property of RPS, it is a project confidential classified document. It must not be copied used or its contents divulged without prior written consent. The needs and expectations of client and RPS must be considered when working with this drawing.
- (iv) Information including topographical survey, geotechnical investigation and utility detail used in the design have been provided by others.
- (v) All Levels refer to Ordnance Survey Datum, Malin Head.

P04	12.05.25	Mk	FOR INFORMATION	SF
P03	08.04.25	Mk	FOR INFORMATION	SF
P02	24.01.25	Mk	FOR INFORMATION	SF
P01	14.01.25	Mk	FOR INFORMATION	SF
Rev	Date	On Cnk	Amendment / Issue	App

rps MAKING COMPLEX EASY

A TETRA TECH COMPANY

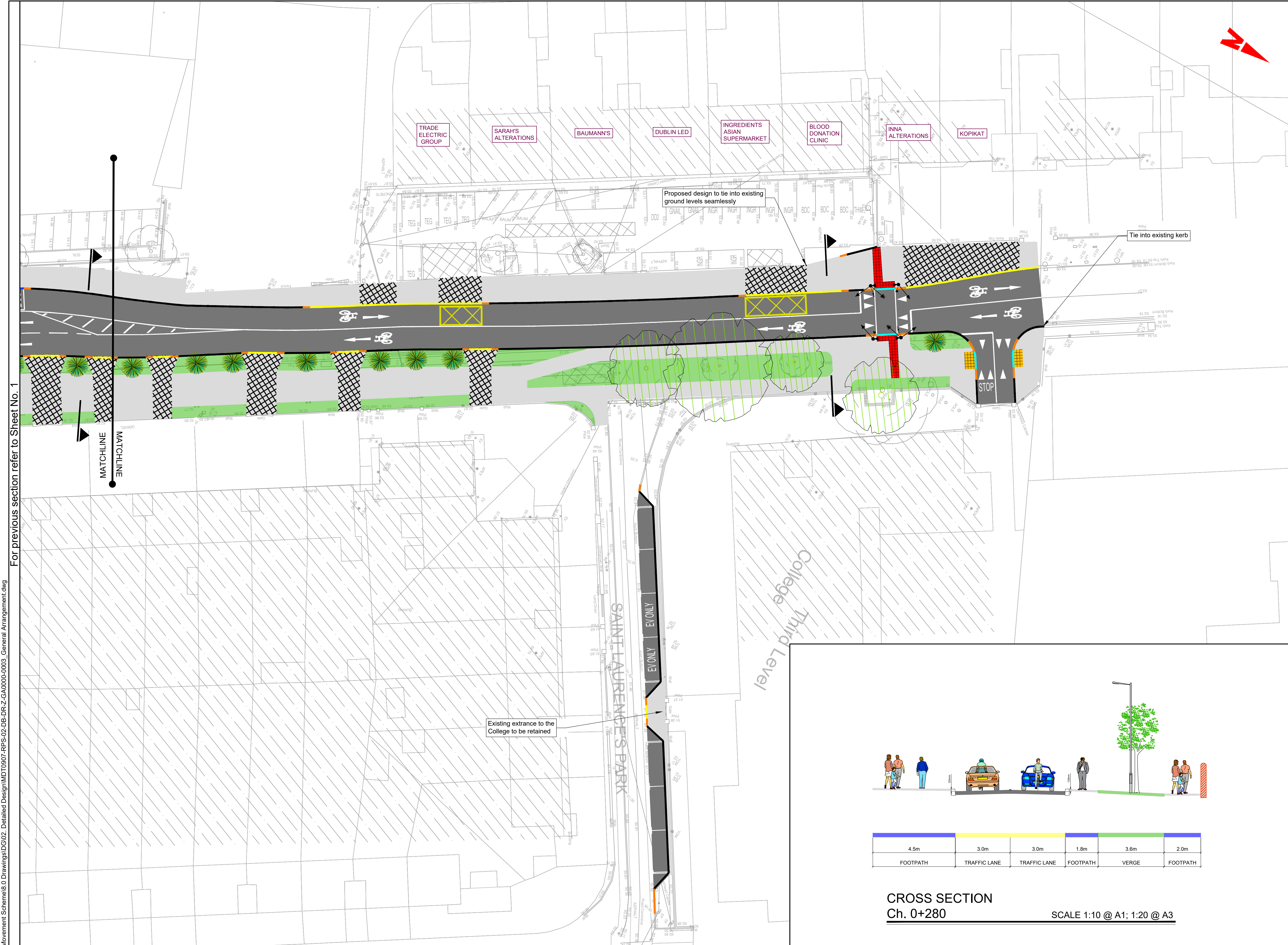
West Pier
Business Campus
Dun Laoghaire
Co. Dublin A96 N6T7

T +353 (0)1 4882900
W www.rpsgroup.com/ireland
E ireland@rpsgroup.com

Model File Identifier

Scale	1:250 @ A1 1:500 @ A3
Created on	NOV 2024
Sheet	1 of 2

Project	STILLORGAN VILLAGE MOVEMENT SCHEME
Title	PHASE 4A - OLD DUBLIN ROAD GENERAL ARRANGEMENT
File Identifier	MDT0907-RPS-02-DB-DR-Z- GA0001
Status	S2
Rev	P04



- NOTES:
1. All dimensions are in millimeters unless indicated otherwise.
 2. This drawing is only to be used for the Design Element identified in the title box. All other information shown on the drawing is to be considered indicative only.

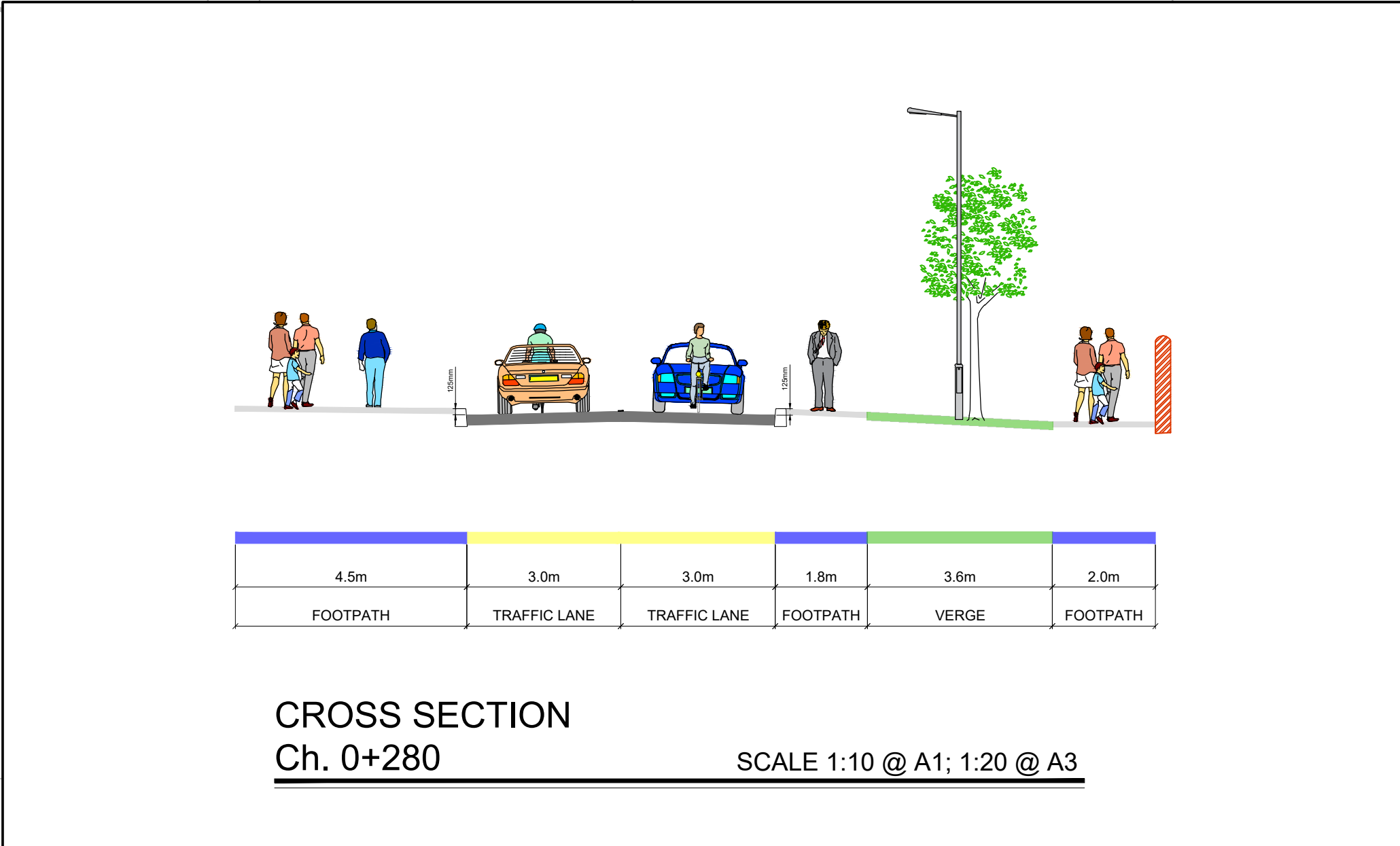
LEGEND:

- Surfaces:
- Pavement Carriageway
 - Pavement Carriageway - Raised Table
 - Footpath
 - Light-weight Footpath at Vehicular Entrance
 - Red Tactile Paving at Controlled Crossing
 - Buff Tactile Paving at Uncontrolled Crossing

- Landscaping:
- Verge - Potential for Ground Cover
 - Proposed Tree
 - Existing Tree to be Retained

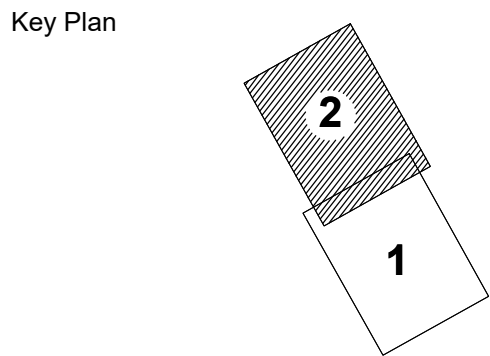
- Kerbs:
- 125mm Upstand Kerb
 - 50mm Upstand Kerb
 - 160mm Upstand Bus Boarding Kerb
 - 0mm - 6mm max. Upstand Kerb at Raised Table Level
 - Transition Kerb
 - 25mm Upstand Vehicular Entrance Kerb

Ordnance Survey Ireland. All rights reserved. Licence Number 2015-16CCMA / Dun Laoghaire-Rathdown County Council



For previous section refer to Sheet No. 1

R:\MDT0907 - Stillorgan Village Movement Scheme\6.0 Drawings\0202 - Detailed Design\MDT0907-RPS-02-DB-DR-Z-GA0000-0003 - General Arrangement.dwg



- General Notes
- (i) Hard copies, dwf and pdf will form a controlled issue of the drawing. All other formats (dwg etc.) are deemed to be an uncontrolled issue and any work carried out based on these files is at the recipients own risk. RPS will not accept any responsibility for any errors from the use of these files, either by human error by the recipient, listing of the un-dimensioned measurements, compatibility with the recipients software, and any errors arising when these files are used to aid the recipients drawing production, or setting out on site.
- (ii) DO NOT SCALE, use figured dimensions only.
- (iii) This drawing is the property of RPS, it is a project confidential classified document. It must not be copied used or its contents divulged without prior written consent. The needs and expectations of client and RPS must be considered when working with this drawing.
- (iv) Information including topographical survey, geotechnical investigation and utility detail used in the design have been provided by others.
- (v) All Levels refer to Ordnance Survey Datum, Malin Head.

P04	12.05.25	Mk	FOR INFORMATION	SF
P03	08.04.25	Mk	FOR INFORMATION	SF
P02	24.01.25	Mk	FOR INFORMATION	SF
P01	14.01.25	Mk	FOR INFORMATION	SF
Rev	Date	Chk	Amendment / Issue	App

rps
A TETRA TECH COMPANY
West Pier Business Campus
Dun Laoghaire Co. Dublin A96 N6T7

T +353 (0)1 4882900
W www.rpsgroup.com/ireland
E ireland@rpsgroup.com

Model File Identifier

Scale	1:250 @ A1 1:500 @ A3
Created on	NOV 2024
Sheet	2 of 2

Project	STILLORGAN VILLAGE MOVEMENT SCHEME
Title	PHASE 4A - OLD DUBLIN ROAD GENERAL ARRANGEMENT
File Identifier	MDT0907-RPS-02-DB-DR-Z- GA0002
Status	S2
Rev	P04